

**2023-2024**

**IREADY &**

**ACT DATA**



**OLDHAM**  
**COUNTY SCHOOLS**

*Ignite Passion. Experience Excellence.*



**IREADY**



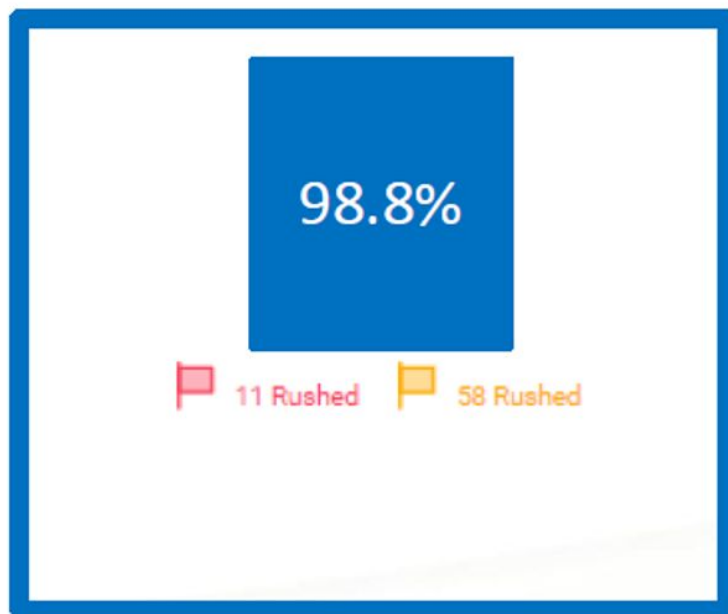
**OLDHAM**  
**COUNTY SCHOOLS**

*Ignite Passion. Experience Excellence.*



## Mathematics Performance Review

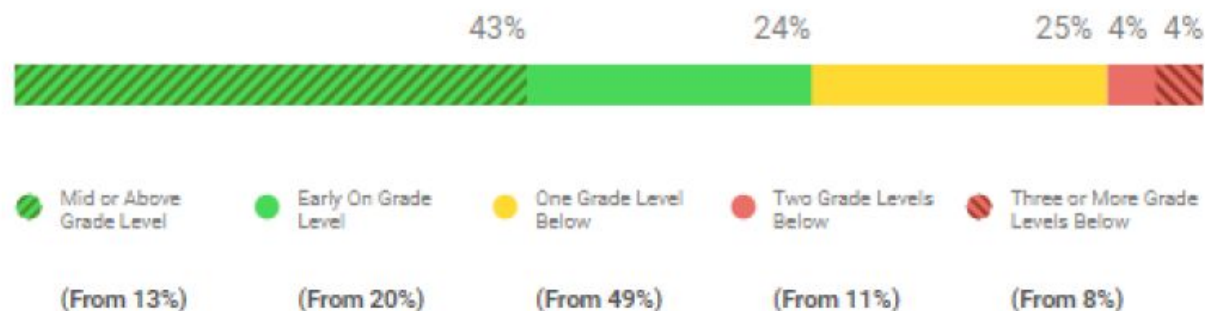
## Math



Performance: 7,947 Students

Growth: 7,761 Students

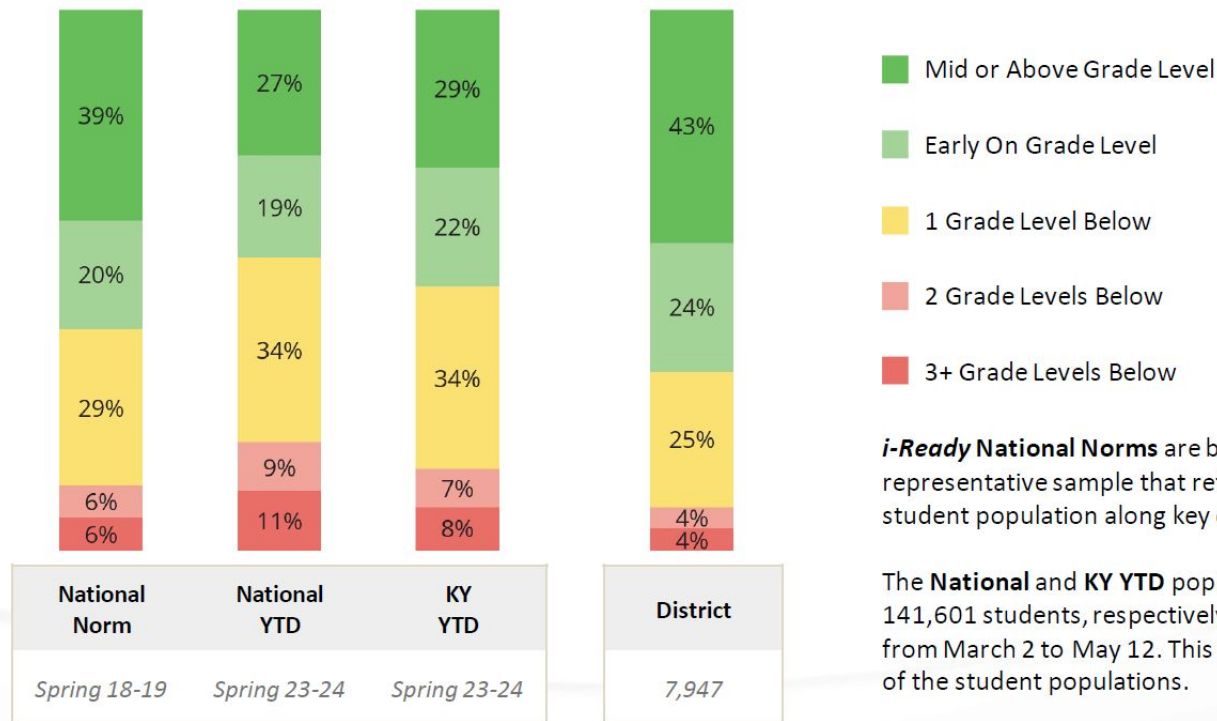
## Current Placement Distribution



# How Do the District's Placements Compare to the Benchmarks?

Fall to Spring

Spring Placement Distribution for District and Benchmarks



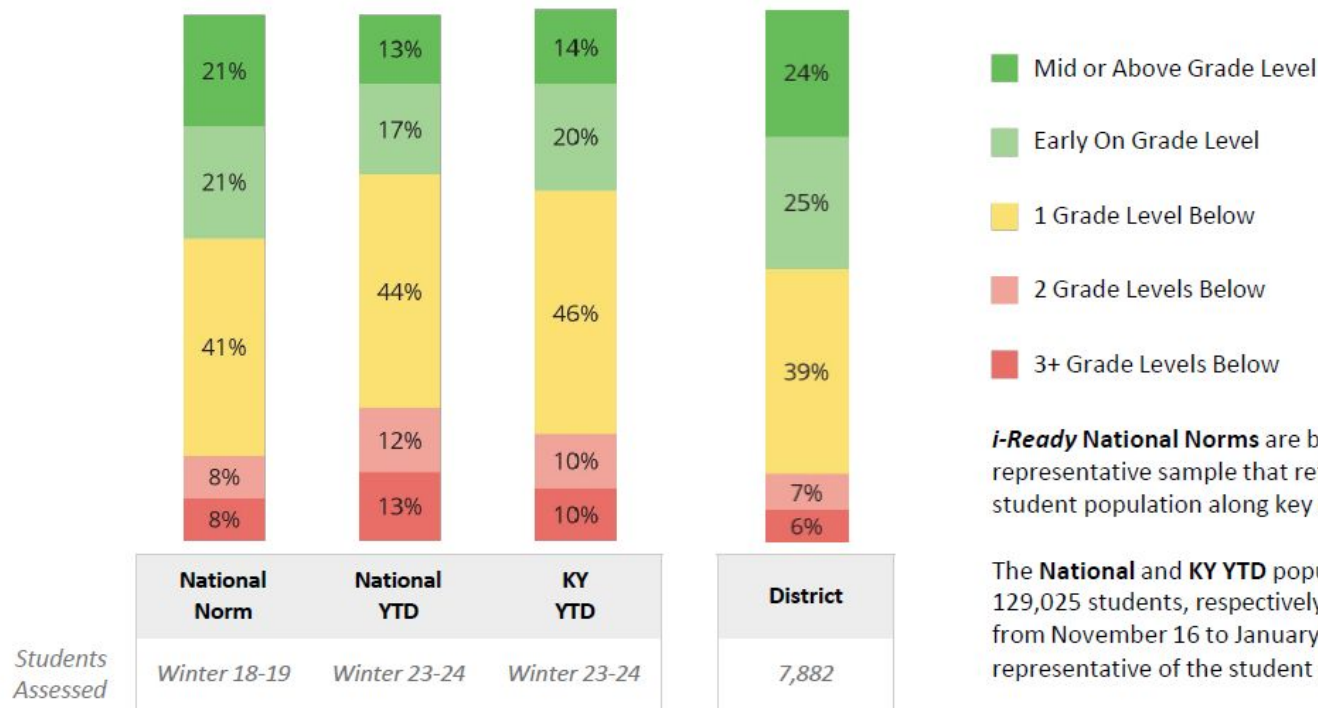
***i-Ready* National Norms** are based on a nationally representative sample that reflects the makeup of the US student population along key demographic characteristics.

The **National** and **KY YTD** populations include 5,192,618 and 141,601 students, respectively, who completed a Diagnostic from March 2 to May 12. This data may not be representative of the student populations.

# How Do the District's Placements Compare to the Benchmarks?

Fall to Winter

Winter Placement Distribution for District and Benchmarks



# How Are Students Progressing Toward Typical and Stretch Growth?

% Students Who Met Typical and Stretch Growth

 % Students Met  
*Typical* Growth

 % Students Met  
*Stretch* Growth

*Students Included:*



# How Are Students Progressing Toward Typical and Stretch Growth?

% Students Who Met Typical and Stretch Growth

## Typical Growth

- Represents the average annual growth for students at a given level
- Provides a normative comparison to peers

 % Students Met  
*Typical* Growth

 % Students Met  
*Stretch* Growth

*Students Included:*

# How Are Students Progressing Toward Typical and Stretch Growth?

% Students Who Met Typical and Stretch Growth

## Typical Growth

- Represents the average annual growth for students at a given level
- Provides a normative comparison to peers

■ % Students Met  
*Typical* Growth

## Stretch Growth

- An ambitious target to reach / exceed grade-level proficiency
- The Stretch Growth model was developed to help more students "catch up" from unfinished learning, especially those below grade level before the pandemic who experienced disproportionate learning loss.

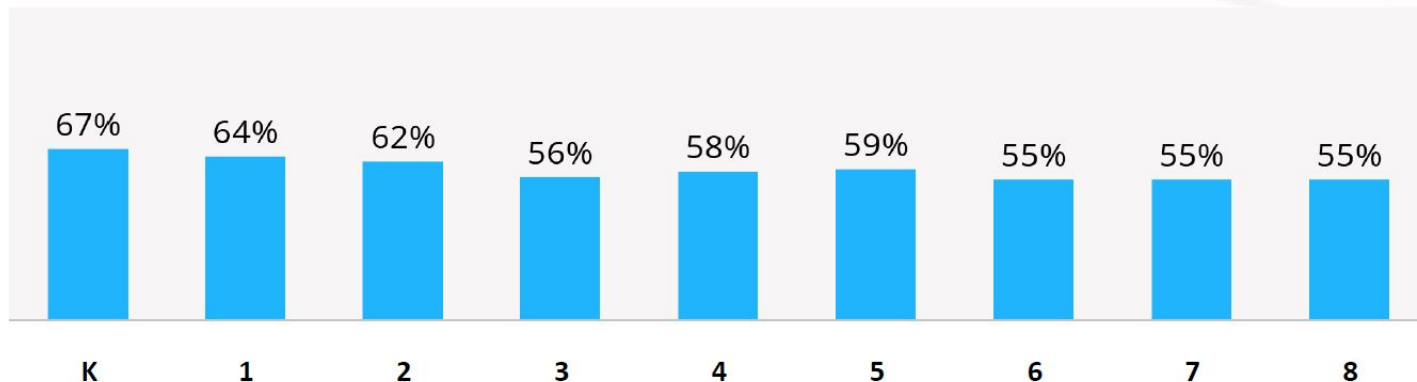
■ % Students Met  
*Stretch* Growth

*Students Included:*

# How Are Students Progressing Toward Typical and Stretch Growth?

% Students Who Met Typical and Stretch Growth

 % Students Met  
**Typical** Growth



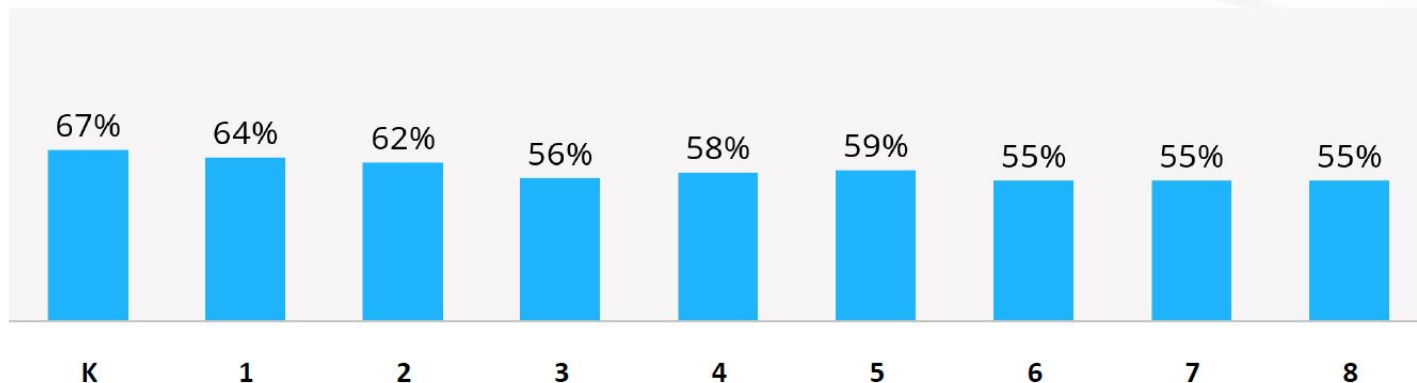
 % Students Met  
**Stretch** Growth

*Students Included:*

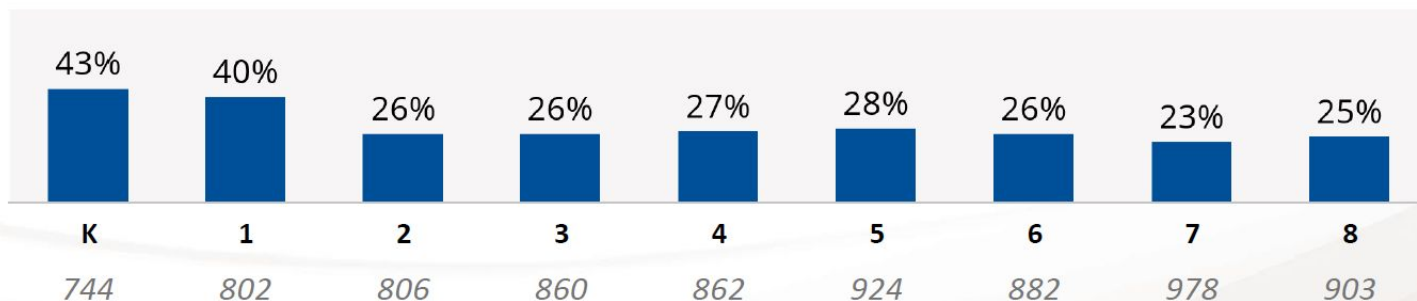
# How Are Students Progressing Toward Typical and Stretch Growth?

% Students Who Met Typical and Stretch Growth

 % Students Met  
*Typical* Growth



 % Students Met  
*Stretch* Growth

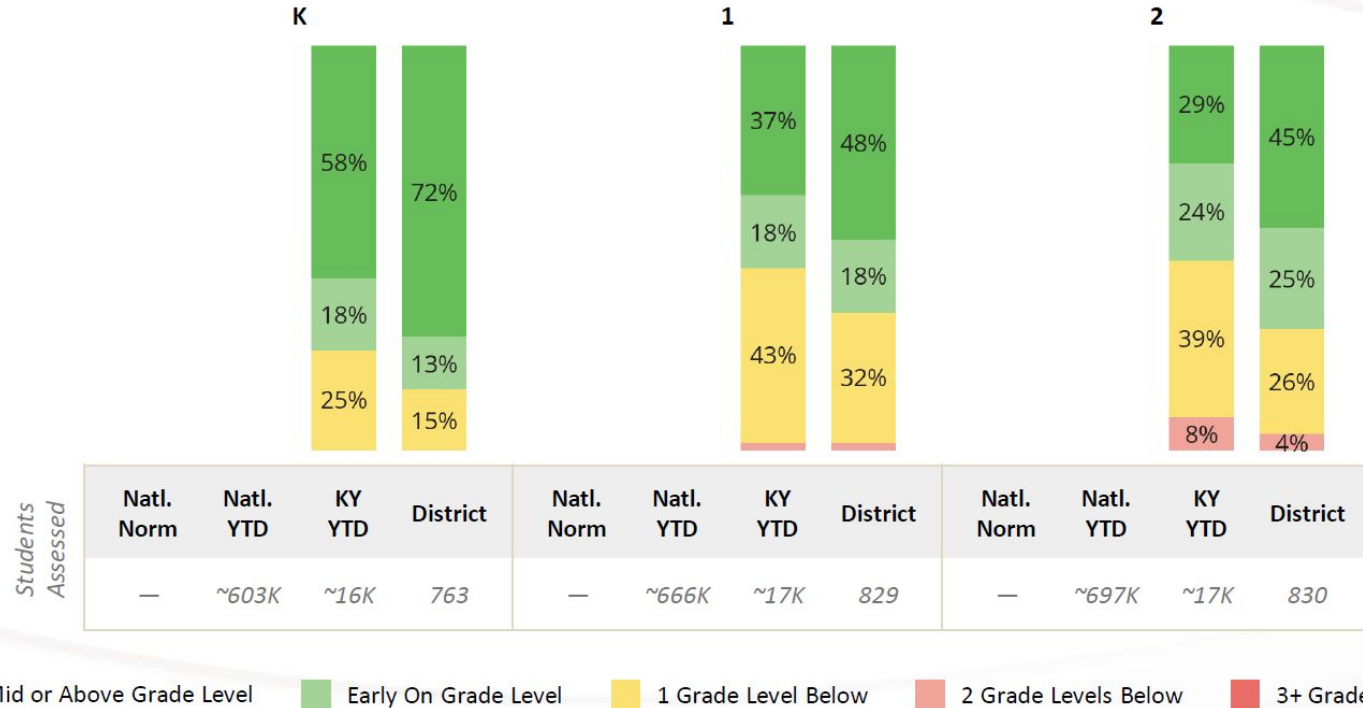


Students Included:

Grade	Students Included
K	744
1	802
2	806
3	860
4	862
5	924
6	882
7	978
8	903

# How Do the District's Placements Compare to the Benchmarks?

Spring Placement Distribution for District and Benchmarks



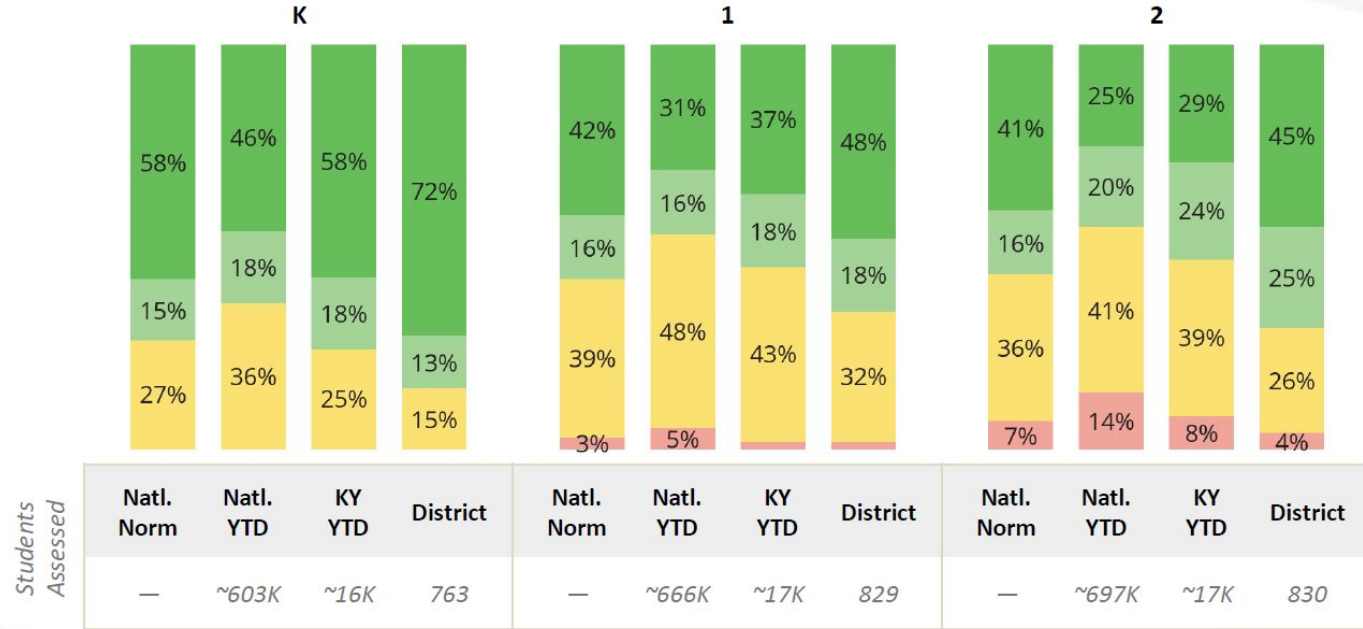
Natl. Norm: *i-Ready* National Norms Spring 18-19

Natl. YTD: National Year-to-Date Spring 23-24

KY YTD: KY Year-to-Date Spring 23-24

# How Do the District's Placements Compare to the Benchmarks?

Spring Placement Distribution for District and Benchmarks



■ Mid or Above Grade Level  
 ■ Early On Grade Level  
 ■ 1 Grade Level Below  
 ■ 2 Grade Levels Below  
 ■ 3+ Grade Levels Below

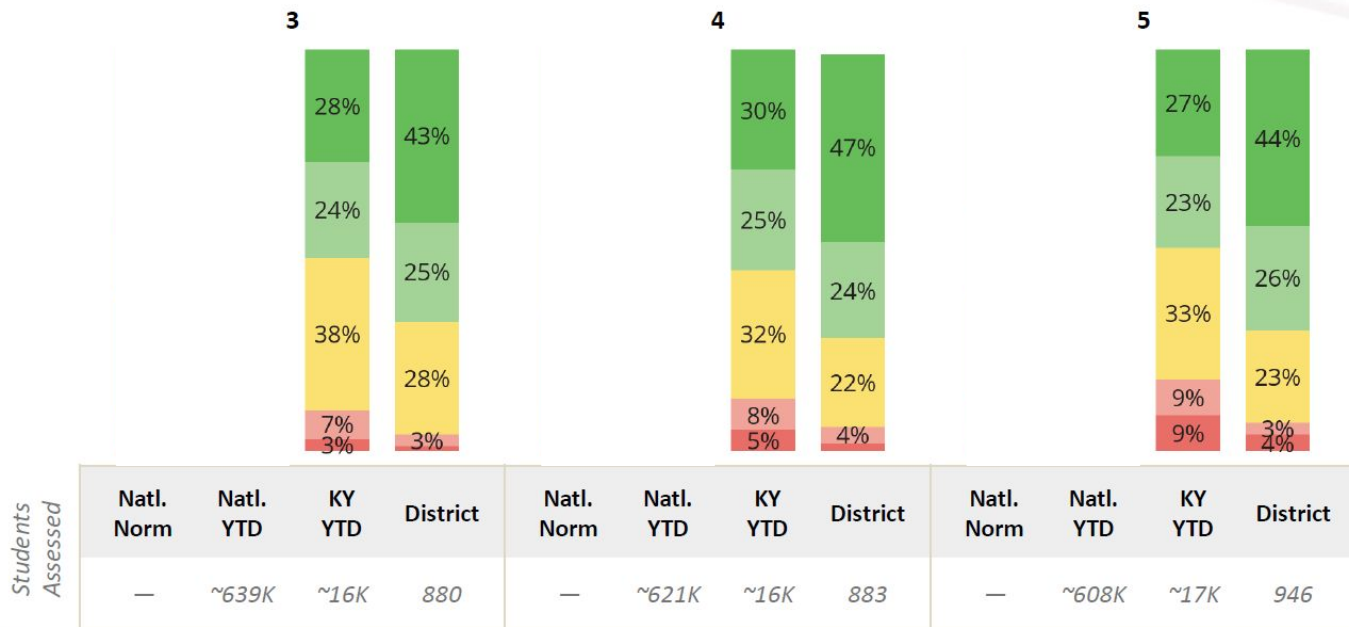
Natl. Norm: *i-Ready* National Norms Spring 18-19

Natl. YTD: National Year-to-Date Spring 23-24

KY YTD: KY Year-to-Date Spring 23-24

# How Do the District's Placements Compare to the Benchmarks?

Spring Placement Distribution for District and Benchmarks



■ Mid or Above Grade Level 
 ■ Early On Grade Level 
 ■ 1 Grade Level Below 
 ■ 2 Grade Levels Below 
 ■ 3+ Grade Levels Below

Natl. Norm: *i-Ready* National Norms Spring 18-19

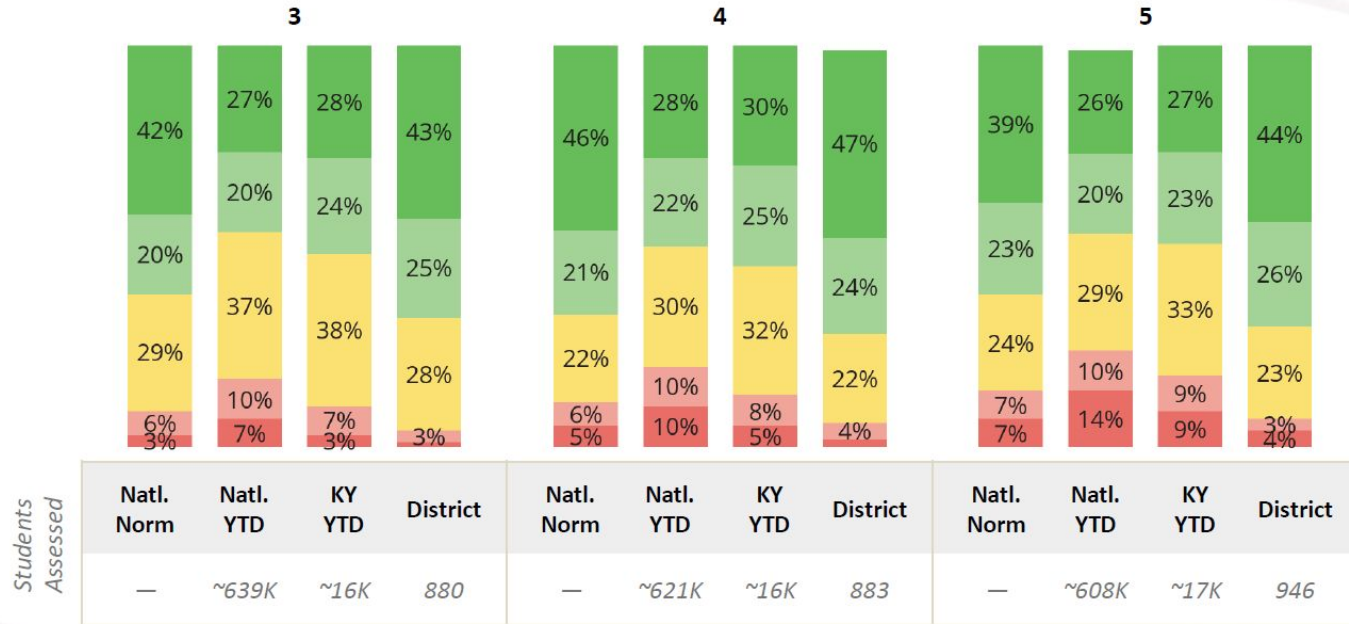
Natl. YTD: National Year-to-Date Spring 23-24

KY YTD: KY Year-to-Date Spring 23-24



# How Do the District's Placements Compare to the Benchmarks?

Spring Placement Distribution for District and Benchmarks



■ Mid or Above Grade Level
 ■ Early On Grade Level
 ■ 1 Grade Level Below
 ■ 2 Grade Levels Below
 ■ 3+ Grade Levels Below

Natl. Norm: *i-Ready* National Norms Spring 18-19

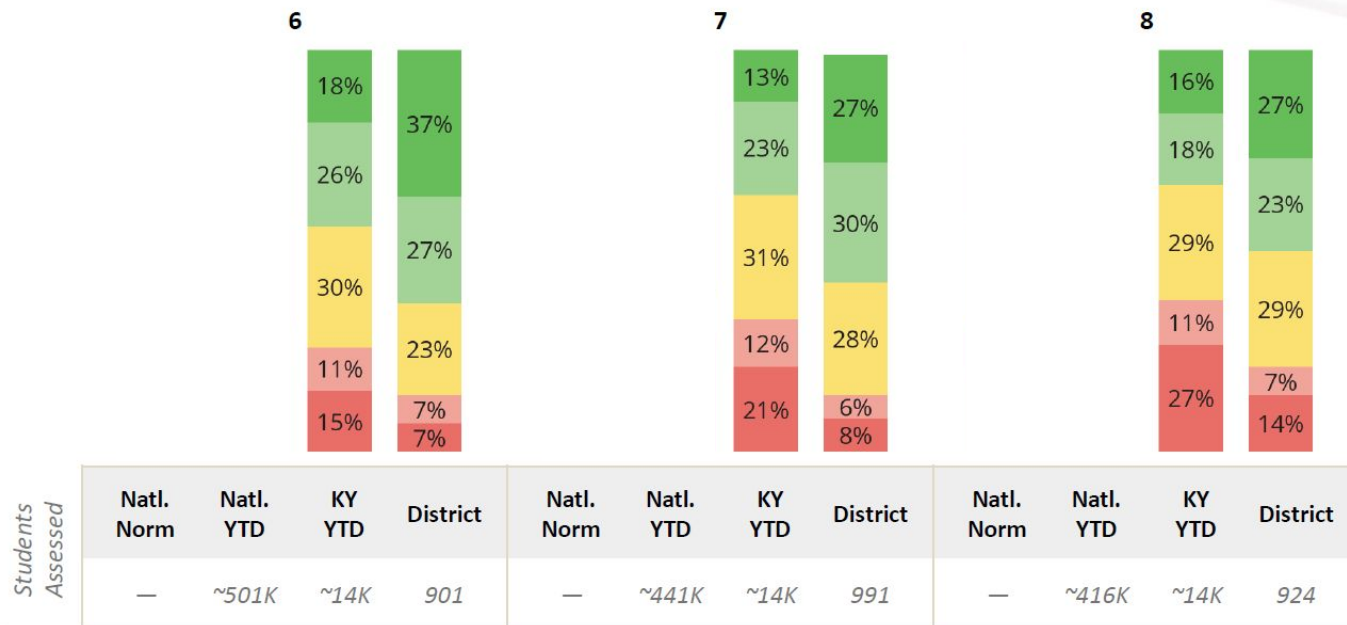
Natl. YTD: National Year-to-Date Spring 23-24

KY YTD: KY Year-to-Date Spring 23-24



# How Do the District's Placements Compare to the Benchmarks?

Spring Placement Distribution for District and Benchmarks



■ Mid or Above Grade Level
 ■ Early On Grade Level
 ■ 1 Grade Level Below
 ■ 2 Grade Levels Below
 ■ 3+ Grade Levels Below

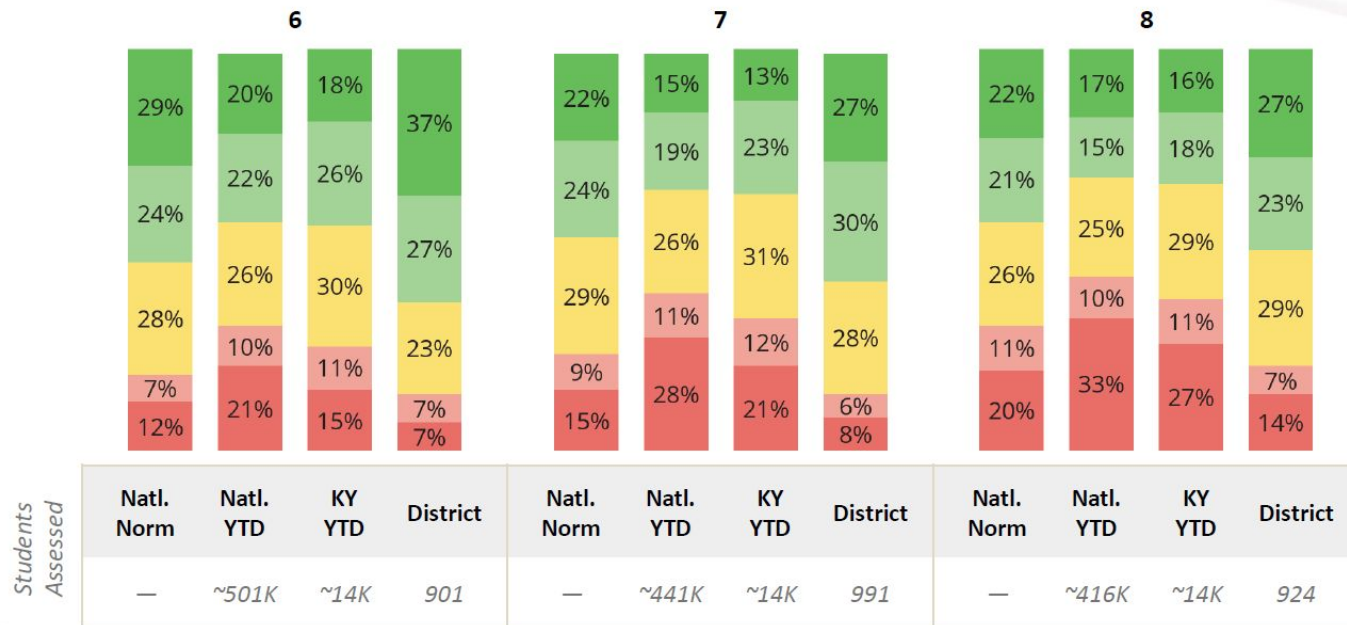
Natl. Norm: *i-Ready* National Norms Spring 18-19

Natl. YTD: National Year-to-Date Spring 23-24

KY YTD: KY Year-to-Date Spring 23-24

# How Do the District's Placements Compare to the Benchmarks?

Spring Placement Distribution for District and Benchmarks



■ Mid or Above Grade Level  
 ■ Early On Grade Level  
 ■ 1 Grade Level Below  
 ■ 2 Grade Levels Below  
 ■ 3+ Grade Levels Below

Natl. Norm: *i-Ready* National Norms Spring 18-19

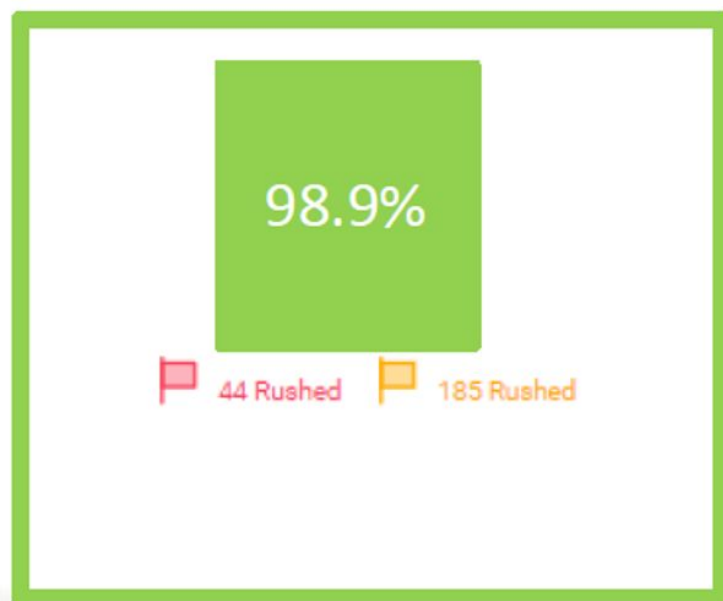
Natl. YTD: National Year-to-Date Spring 23-24

KY YTD: KY Year-to-Date Spring 23-24



## Reading Performance Review

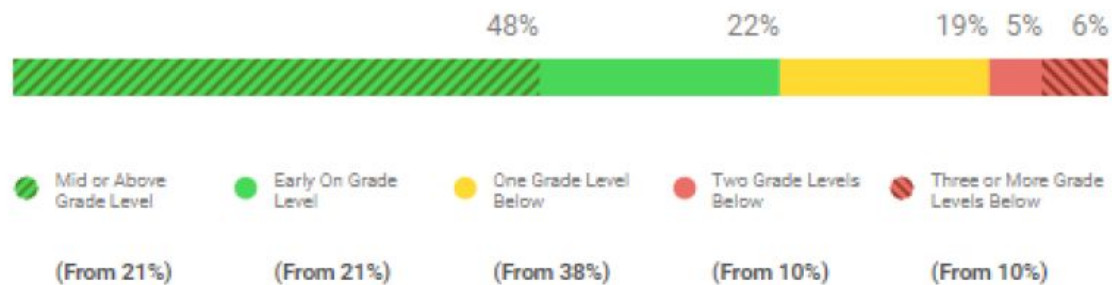
## Reading



Performance: 7,949 Students

Growth: 7,764 Students

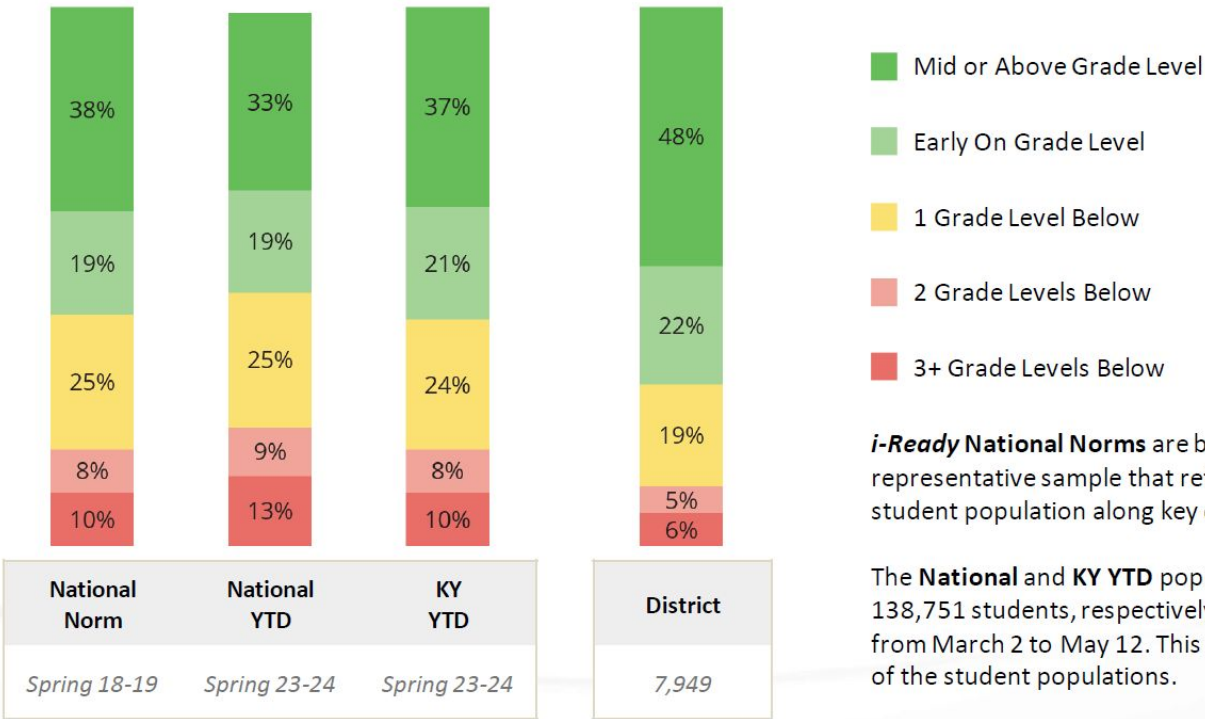
## Current Placement Distribution



# How Do the District's Placements Compare to the Benchmarks?

Fall to Spring

Spring Placement Distribution for District and Benchmarks



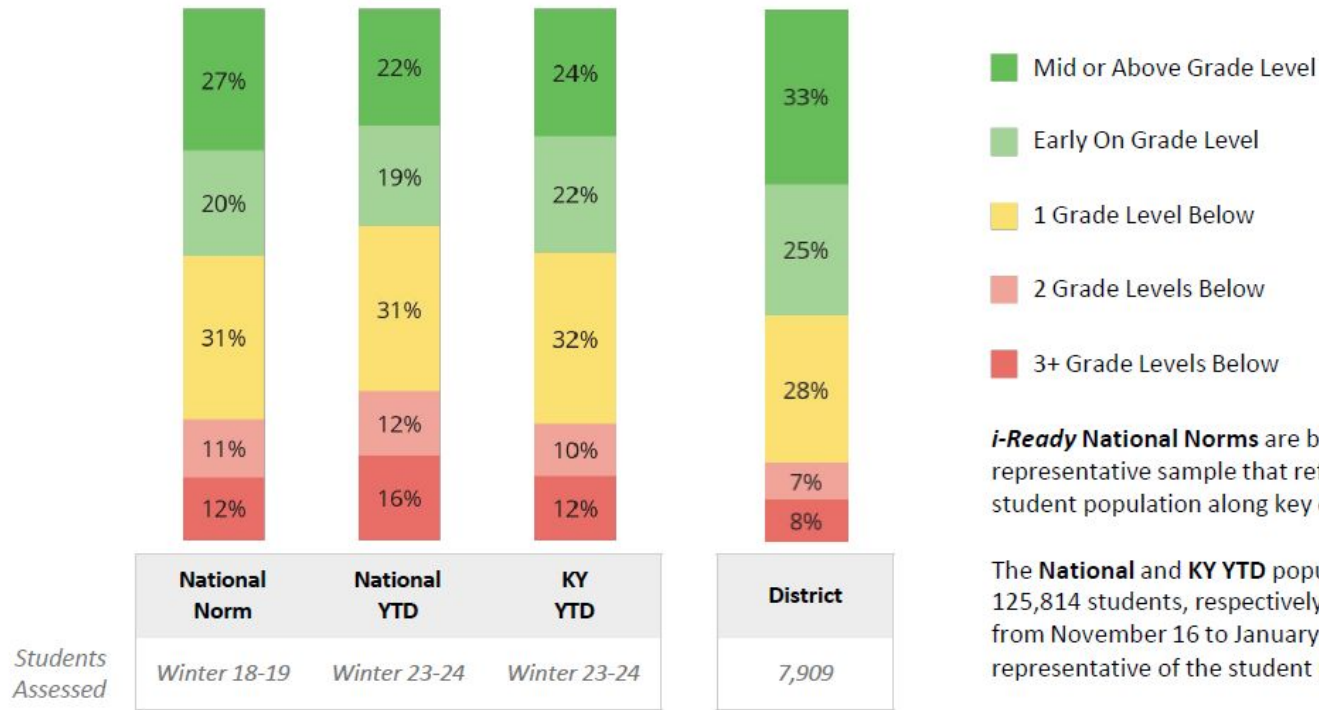
**i-Ready National Norms** are based on a nationally representative sample that reflects the makeup of the US student population along key demographic characteristics.

The **National** and **KY YTD** populations include 4,782,179 and 138,751 students, respectively, who completed a Diagnostic from March 2 to May 12. This data may not be representative of the student populations.

# How Do the District's Placements Compare to the Benchmarks?


Fall to Winter

Winter Placement Distribution for District and Benchmarks



# How Are Students Progressing Toward Typical and Stretch Growth?

% Students Who Met Typical and Stretch Growth

 % Students Met  
***Typical*** Growth


 % Students Met  
***Stretch*** Growth

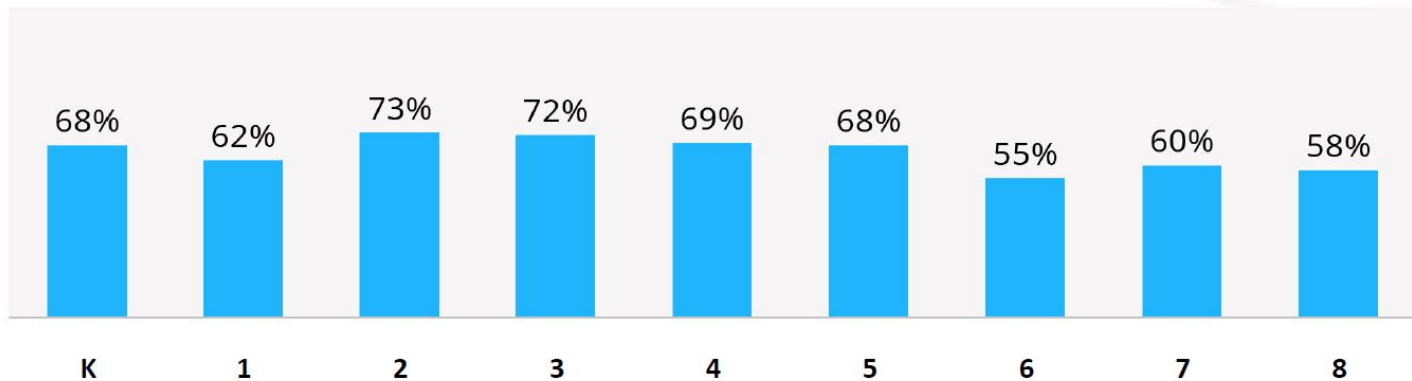
*Students Included:*



# How Are Students Progressing Toward Typical and Stretch Growth?

% Students Who Met Typical and Stretch Growth

 % Students Met  
**Typical** Growth



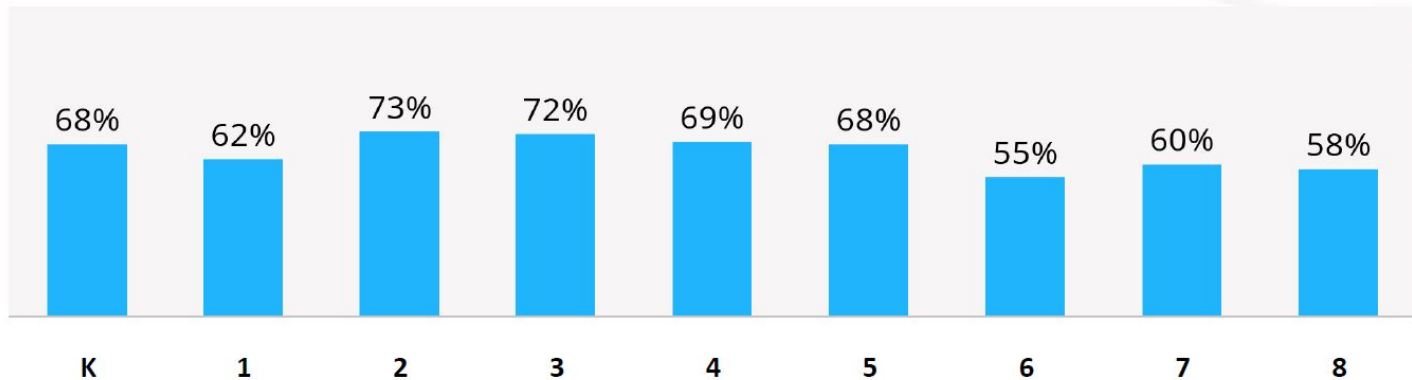
 % Students Met  
**Stretch** Growth

*Students Included:*

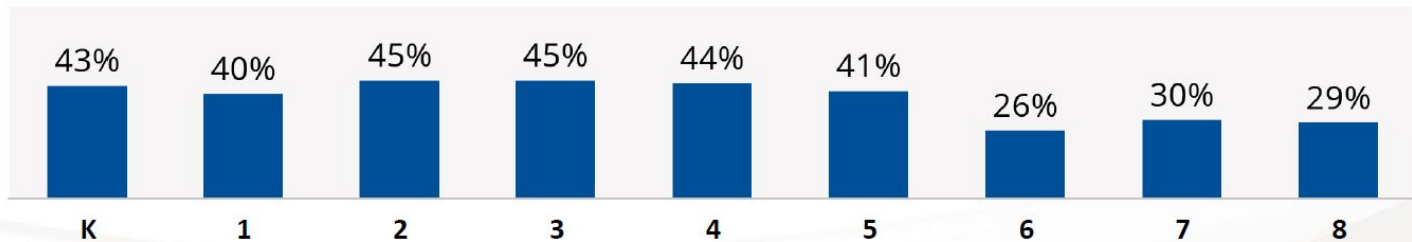
# How Are Students Progressing Toward Typical and Stretch Growth?

% Students Who Met Typical and Stretch Growth

% Students Met  
**Typical** Growth



% Students Met  
**Stretch** Growth

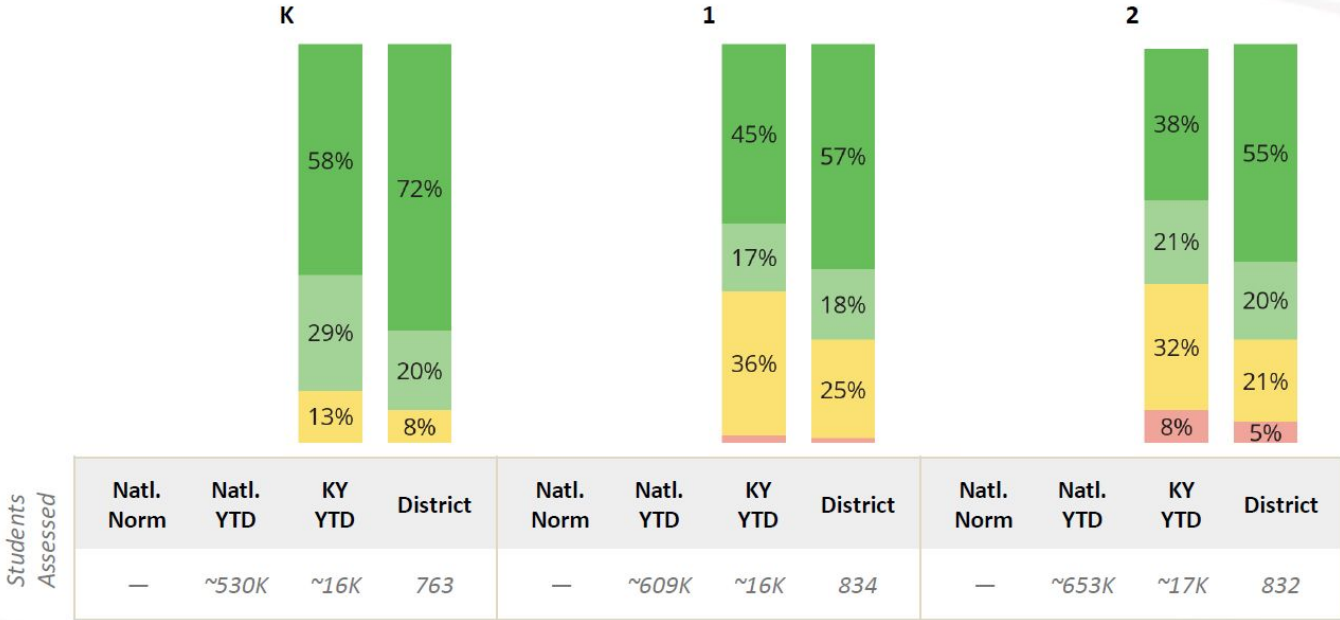


Students Included:

K 743    1 808    2 810    3 860    4 859    5 924    6 873    7 981    8 906

# How Do the District's Placements Compare to the Benchmarks?

Spring Placement Distribution for District and Benchmarks



■ Mid or Above Grade Level
 ■ Early On Grade Level
 ■ 1 Grade Level Below
 ■ 2 Grade Levels Below
 ■ 3+ Grade Levels Below

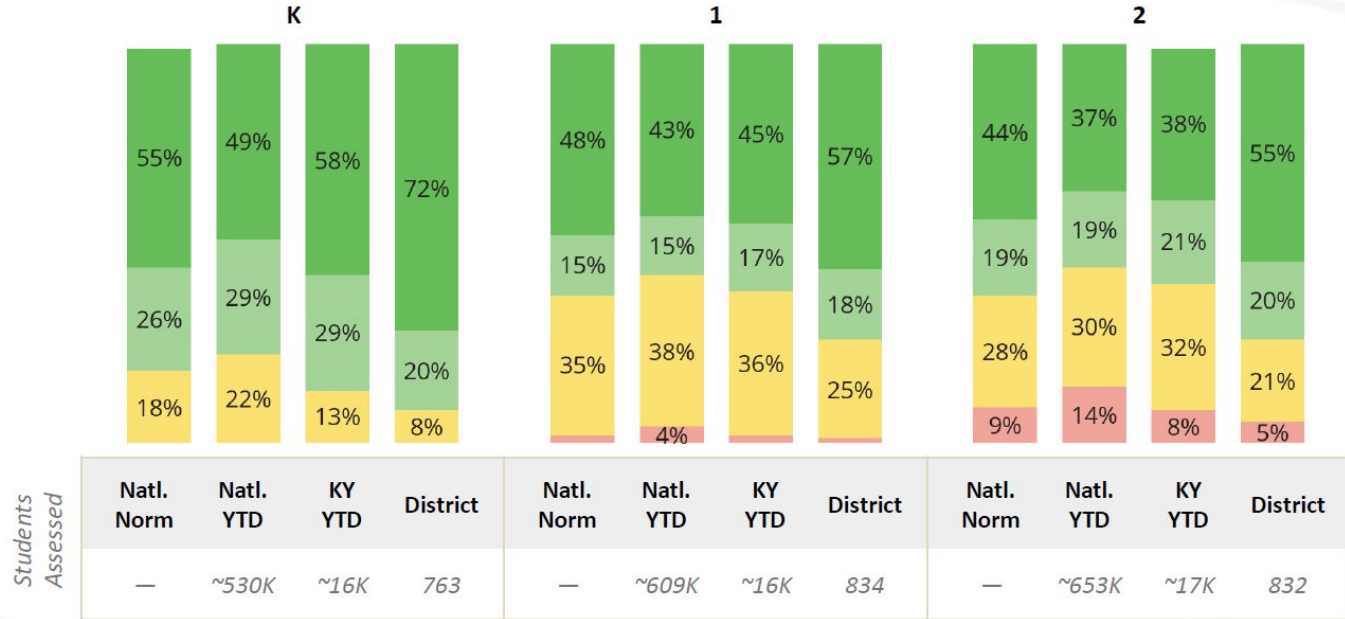
Natl. Norm: *i-Ready* National Norms Spring 18-19

Natl. YTD: National Year-to-Date Spring 23-24

KY YTD: KY Year-to-Date Spring 23-24

# How Do the District's Placements Compare to the Benchmarks?

Spring Placement Distribution for District and Benchmarks



■ Mid or Above Grade Level
 ■ Early On Grade Level
 ■ 1 Grade Level Below
 ■ 2 Grade Levels Below
 ■ 3+ Grade Levels Below

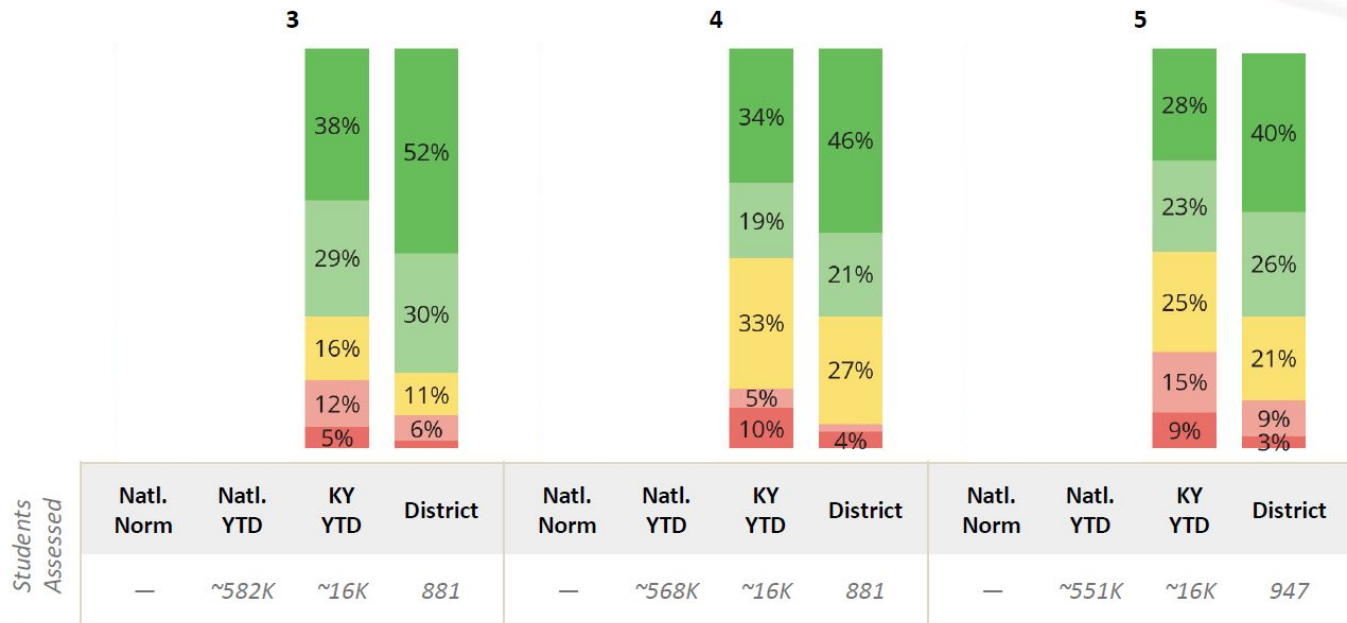
Natl. Norm: *i-Ready* National Norms Spring 18-19

Natl. YTD: National Year-to-Date Spring 23-24

KY YTD: KY Year-to-Date Spring 23-24

# How Do the District's Placements Compare to the Benchmarks?

Spring Placement Distribution for District and Benchmarks



■ Mid or Above Grade Level
 ■ Early On Grade Level
 ■ 1 Grade Level Below
 ■ 2 Grade Levels Below
 ■ 3+ Grade Levels Below

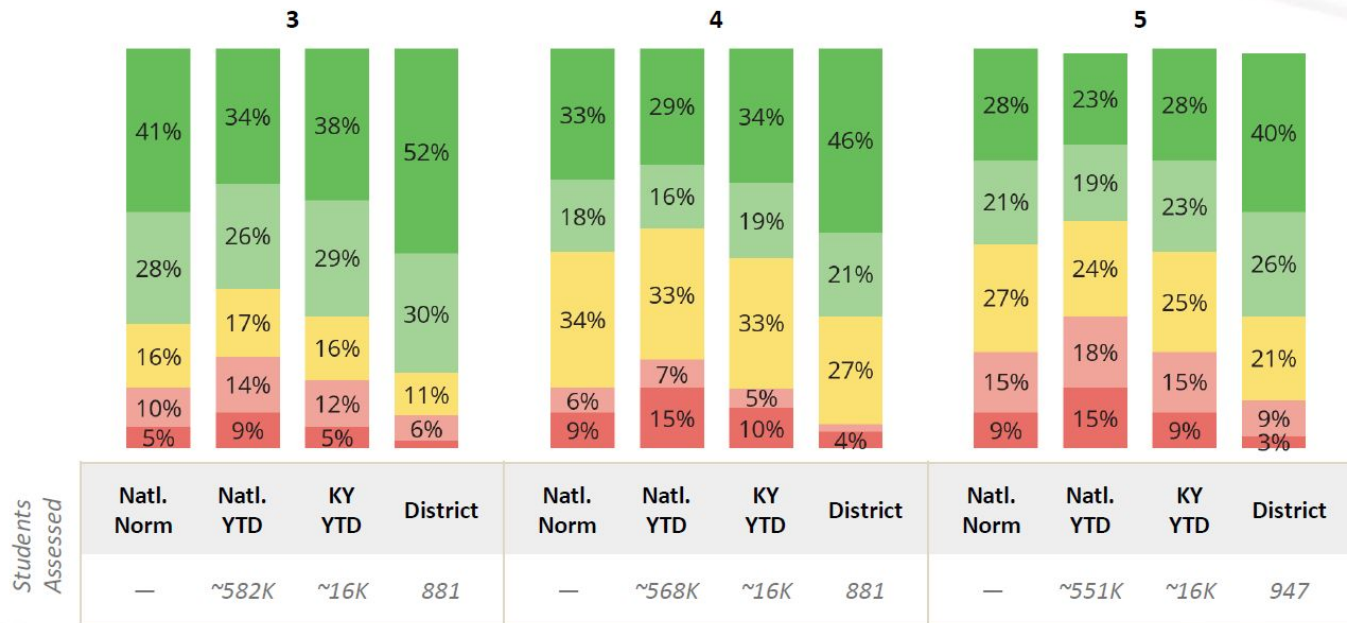
Natl. Norm: *i-Ready* National Norms Spring 18-19

Natl. YTD: National Year-to-Date Spring 23-24

KY YTD: KY Year-to-Date Spring 23-24

# How Do the District's Placements Compare to the Benchmarks?

Spring Placement Distribution for District and Benchmarks



■ Mid or Above Grade Level  
 ■ Early On Grade Level  
 ■ 1 Grade Level Below  
 ■ 2 Grade Levels Below  
 ■ 3+ Grade Levels Below

Natl. Norm: *i-Ready* National Norms Spring 18-19

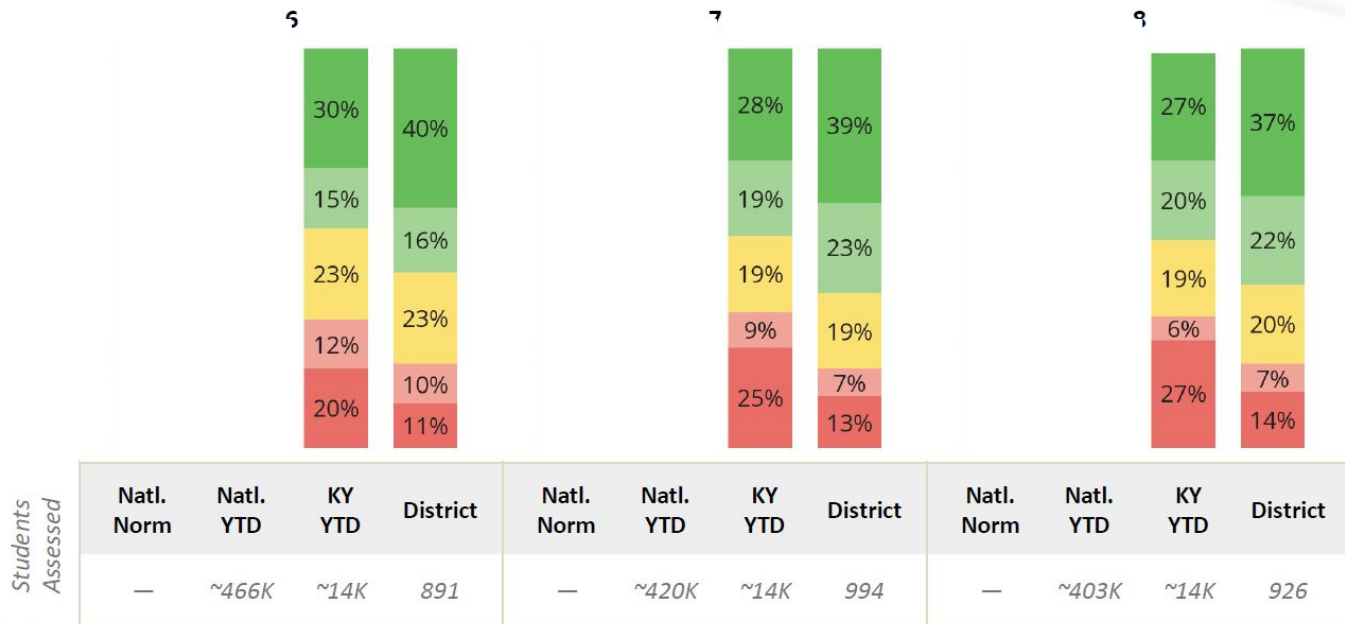
Natl. YTD: National Year-to-Date Spring 23-24

KY YTD: KY Year-to-Date Spring 23-24



# How Do the District's Placements Compare to the Benchmarks?

Spring Placement Distribution for District and Benchmarks



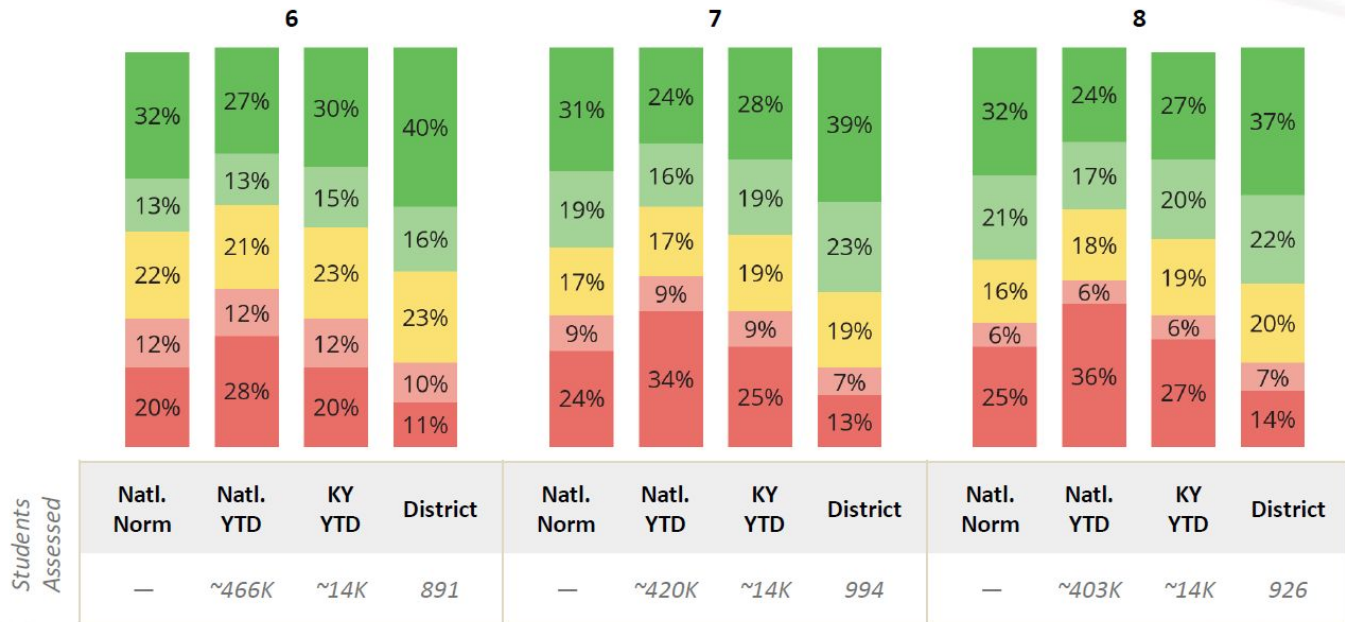
Natl. Norm: *i-Ready* National Norms Spring 18-19

Natl. YTD: National Year-to-Date Spring 23-24

KY YTD: KY Year-to-Date Spring 23-24

# How Do the District's Placements Compare to the Benchmarks?

Spring Placement Distribution for District and Benchmarks



■ Mid or Above Grade Level
 ■ Early On Grade Level
 ■ 1 Grade Level Below
 ■ 2 Grade Levels Below
 ■ 3+ Grade Levels Below

Natl. Norm: *i-Ready* National Norms Spring 18-19

Natl. YTD: National Year-to-Date Spring 23-24

KY YTD: KY Year-to-Date Spring 23-24



# ACT



# OLDHAM

## COUNTY SCHOOLS

*Ignite Passion. Experience Excellence.*

# ACT

---



## 2023-2024

923 - Spring ACT Test

Sophomores- Took ACT in December- No scores yet!

Juniors- took ACT in February

Seniors- KDE optional ACT in October

## 2022-2023

959 - Spring ACT Test

Sophomore took Pre-ACT





Juniors- Took the ACT in November and March

Seniors- KDE had an optional senior window

# ACT SCORES

Group	Year	Admin	Composite		Math	Science	STEM	English	Reading
			Valid Number	Mean Score	Mean Score	Mean Score	Mean Score	Mean Score	Mean Score
OLDHAM COUNTY SCHOOL DISTRICT	2023-2024	Spring	923	21.4	21.1	21.5	21.6	20.7	21.9
OLDHAM COUNTY SCHOOL DISTRICT	2022-2023	Spring	959	21.4	21	21.3	21.4	20.9	21.9
OLDHAM COUNTY SCHOOL DISTRICT	2021-2022	Spring	941	21.6	20.9	21.6	21.5	20.9	22.3
OLDHAM COUNTY SCHOOL DISTRICT	2020-2021	Spring	984	20.7	20.3	20.9	20.9	19.9	21.2
OLDHAM COUNTY SCHOOL DISTRICT	2019-2020	Spring	949	21.9	21.3	21.9	21.9	21.4	22.4

# ACT SCORES

Group	Year	Admin	Composite		Math	Science	STEM	English	Reading
			Valid Number	Mean Score	Mean Score	Mean Score	Mean Score	Mean Score	Mean Score
OLDHAM COUNTY SCHOOL DISTRICT	2023-2024	Spring	923	21.4	21.1 	21.5 	21.6 	20.7 	21.9
OLDHAM COUNTY SCHOOL DISTRICT	2022-2023	Spring	959	21.4	21	21.3	21.4	20.9	21.9
OLDHAM COUNTY SCHOOL DISTRICT	2021-2022	Spring	941	21.6	20.9	21.6	21.5	20.9	22.3
OLDHAM COUNTY SCHOOL DISTRICT	2020-2021	Spring	984	20.7	20.3	20.9	20.9	19.9	21.2
OLDHAM COUNTY SCHOOL DISTRICT	2019-2020	Spring	949	21.9	21.3	21.9	21.9	21.4	22.4