

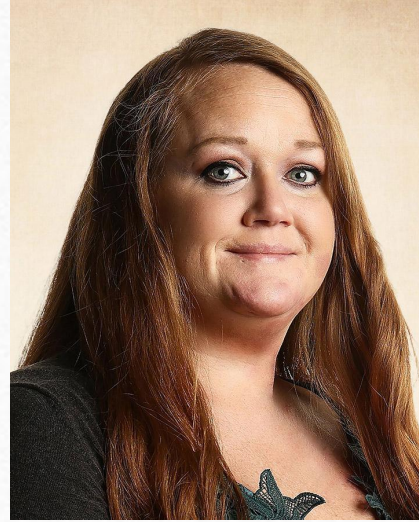
Sterling Health Care School Based Health Powell County Schools

2023/2024 School Year





Sarah Crabtree, APRN



Amanda Miller, LCSW



Amy Holder, CMA

Sterling Health School Based Health Team
Powell County Schools



Dr. Barry Williams
Medical Director



Angel Rogers, LPN
School Based Health
Coordinator

Services Offered

- Sick Visits

- Your child can receive immediate care for sudden health concerns at school. This program is perfect for:

- Allergies

- Bronchitis

- Flu

- Common Cold

- Lice

- Cough

- Ear Pain

- Sore Throat

- Rashes/Skin Infection

- Nausea/Vomiting

- Urinary Tract Infection

- COVID-19 Testing

Wellness Exams

Our School Health Clinics cover far more than sick visits. You can skip the waiting room, leaving work or getting a school excuse. Your child can get required vaccinations and check ups at school without having to miss significant class time.

- Immunizations
- Well-child visits
- School physicals
- Sports physicals



SPORTS PHYSICALS



**STERLING
HEALTH CARE**

We're Here For Your Family!

Sterling Health Care (SHC) will be offering sports physicals through its School-Based Health Program at the following times and location:



Powell County Middle School

Monday, June 3

Tuesday, June 4

8 a.m. to 3 p.m.

*Physicals
are FREE!*

Call for appointments ♦ (859) 585-2061 ♦ Walk-ins welcome

School-Based Dental

Sterling Health Care also offers on-site dental services as part of their School-Based Program.

With the required consent forms filled out and on file, your child can receive the following dental services while at school:

- **Dental exams, including school entry exam**
- **Fluoride varnish**

This service is intended for students who are not previously established with a dentist or if you wish to have your child's dental needs performed while at school. Our school dental program saves you time and provides a safe and comfortable place for your child to receive dental care from our licensed, local professionals.

For questions regarding our School-Based Dental Program, please call (859) 788-2841. Please note that you will be notified before and after your student is seen by our dental team.

SHC accepts all insurances and Medicaid,

including WellCare of Kentucky, Anthem Medicaid, Humana Kentucky Medicaid, Aetna Better Health, and Passport.

If you do not have insurance or if you struggle to pay co-pays, our Sliding Fee Program may help. This program allows you to pay for your fee based on your household's income and the number of people living in your household, whether you have healthcare or not. The scale is based on the Federal Poverty Level guidelines.

Parents/guardians will be billed for any services provided as part of this program; there will be no exchange of money in the schools.

School Health Dashboard - Powell County

School Attendance			
School	Remained at School	Went home	Total
Clay City	114	130	244
Bowen	112	105	217
Stanton	102	101	203
PCMS	92	156	248
PCHS	75	79	154
POWELL ACADEMY	0	1	1
Total	495	572	1067

Type of Visit										
School	CDL	Sick	Vaccine	Wellness w/Vaccine	Sports Physical	Wellness w/out Vaccine	School Physical	Follow Up	Total	
Clay City	0	238	0	0	2	2	2	0	244	
Bowen	0	203	11	0	3	0	0	0	217	
Stanton	0	198	1	0	3	0	1	0	203	
PCMS	13	227	0	4	3	0	1	0	248	
PCHS	1	144	0	2	5	0	2	0	154	
POWELL ACADEMY	0	1	0	0	0	0	0	0	1	
Total	14	1011	12	6	16	2	6	0	1067	

Adult/Child			
School	Adult	Child	Total
Clay City	76	168	244
Bowen	56	161	217
Stanton	72	131	203
PCMS	67	181	248
PCHS	44	110	154
POWELL ACADEMY	0	1	1
Total	315	752	1067

Time of Day			
School	Morning	Afternoon	Total
Clay City	91	153	244
Bowen	133	84	217
Stanton	67	136	203
PCMS	151	97	248
PCHS	69	85	154
POWELL ACADEMY	1	0	1
Total	512	555	1067

Free Sports Physicals
50

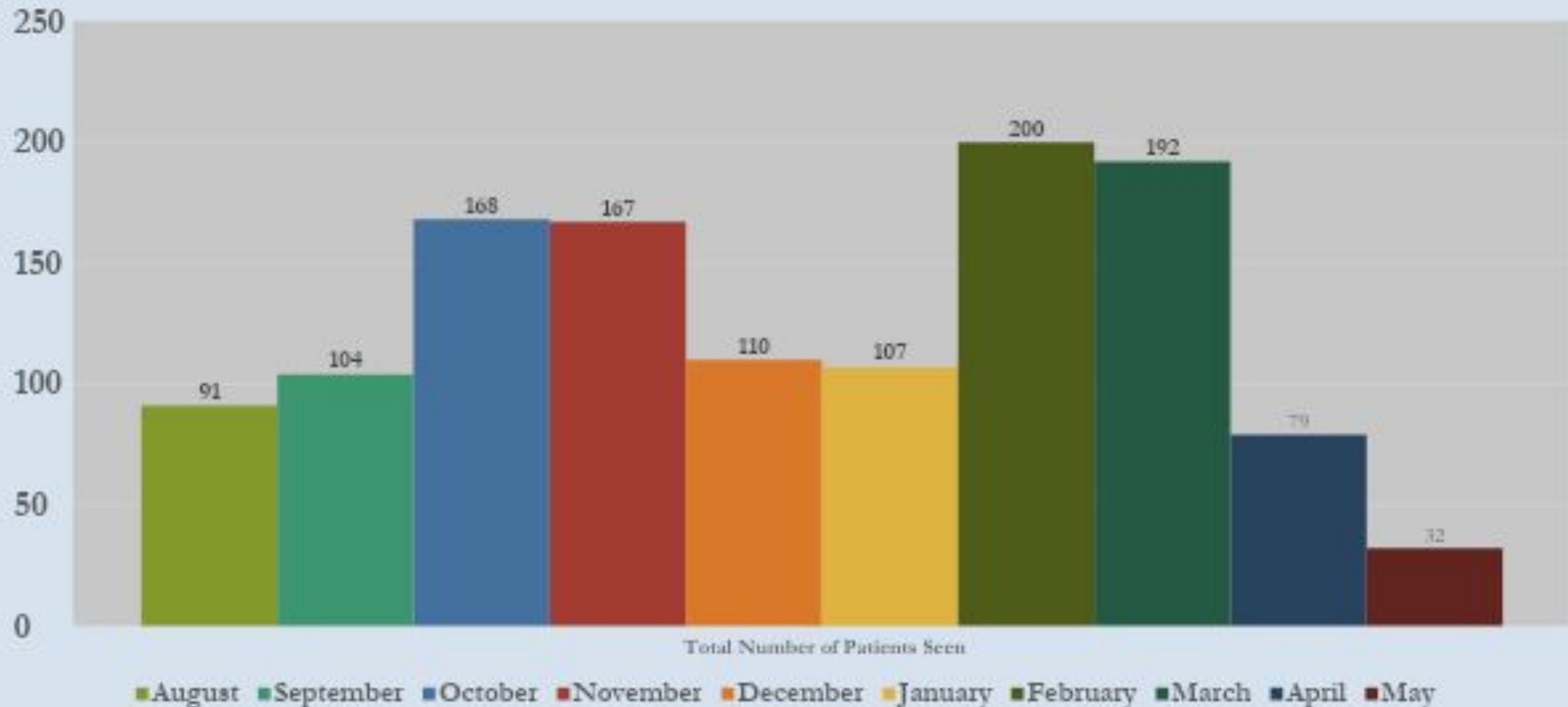
FLU Shots Oct '23
85

Current SHS patient			
School	Yes	No	Total
Clay City	212	32	244
Bowen	202	15	217
Stanton	194	9	203
PCMS	241	7	248
PCHS	145	9	154
POWELL ACADEMY	1	0	1
Total	995	72	1067

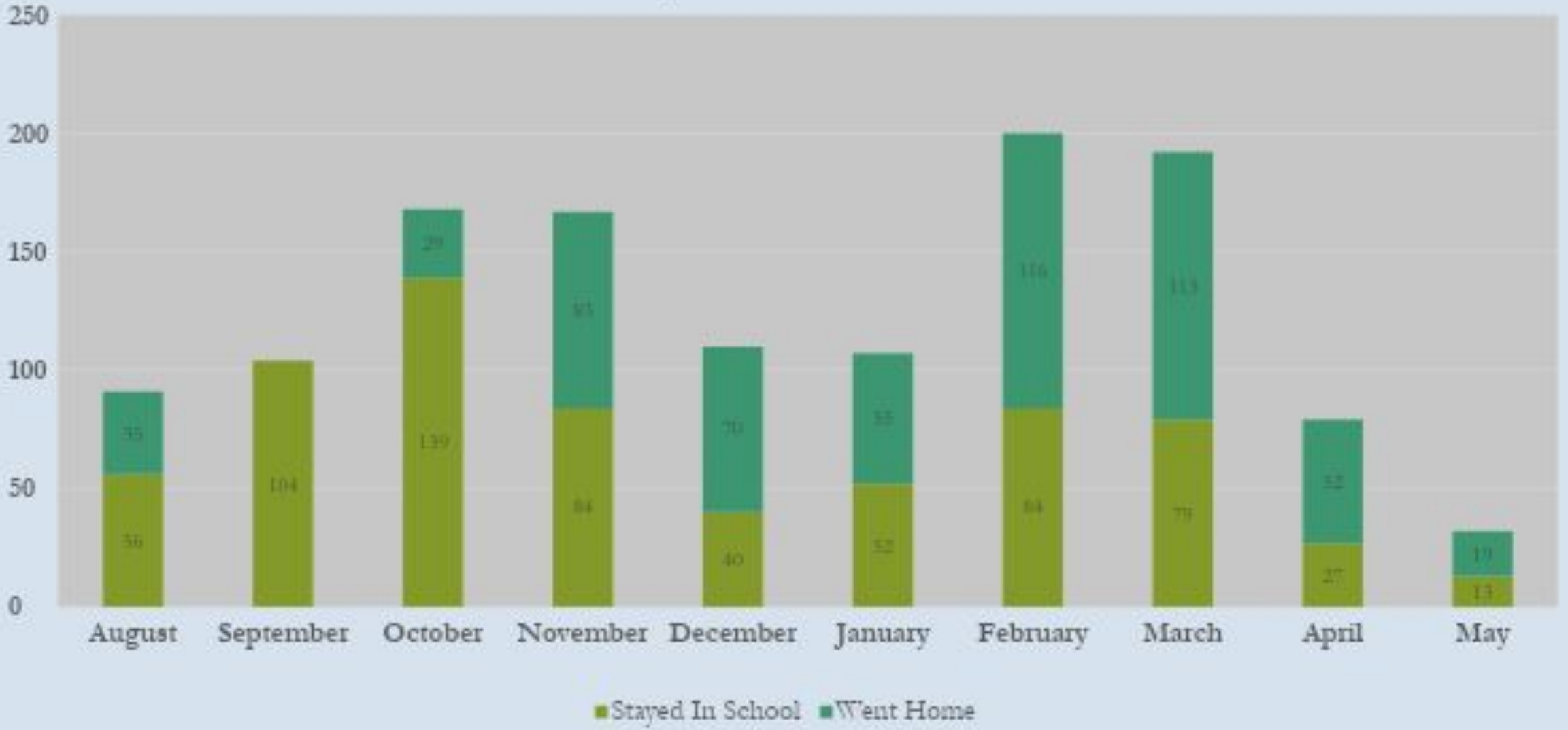
Had PCP prior to visit			
School	Yes	No	Total
Clay City	242	2	244
Bowen	213	4	217
Stanton	203	0	203
PCMS	248	0	248
PCHS	152	2	154
POWELL ACADEMY	1	0	1
Total	1059	8	1067

Visits While VPN Down- 9/1-10/18	
All Schools	200

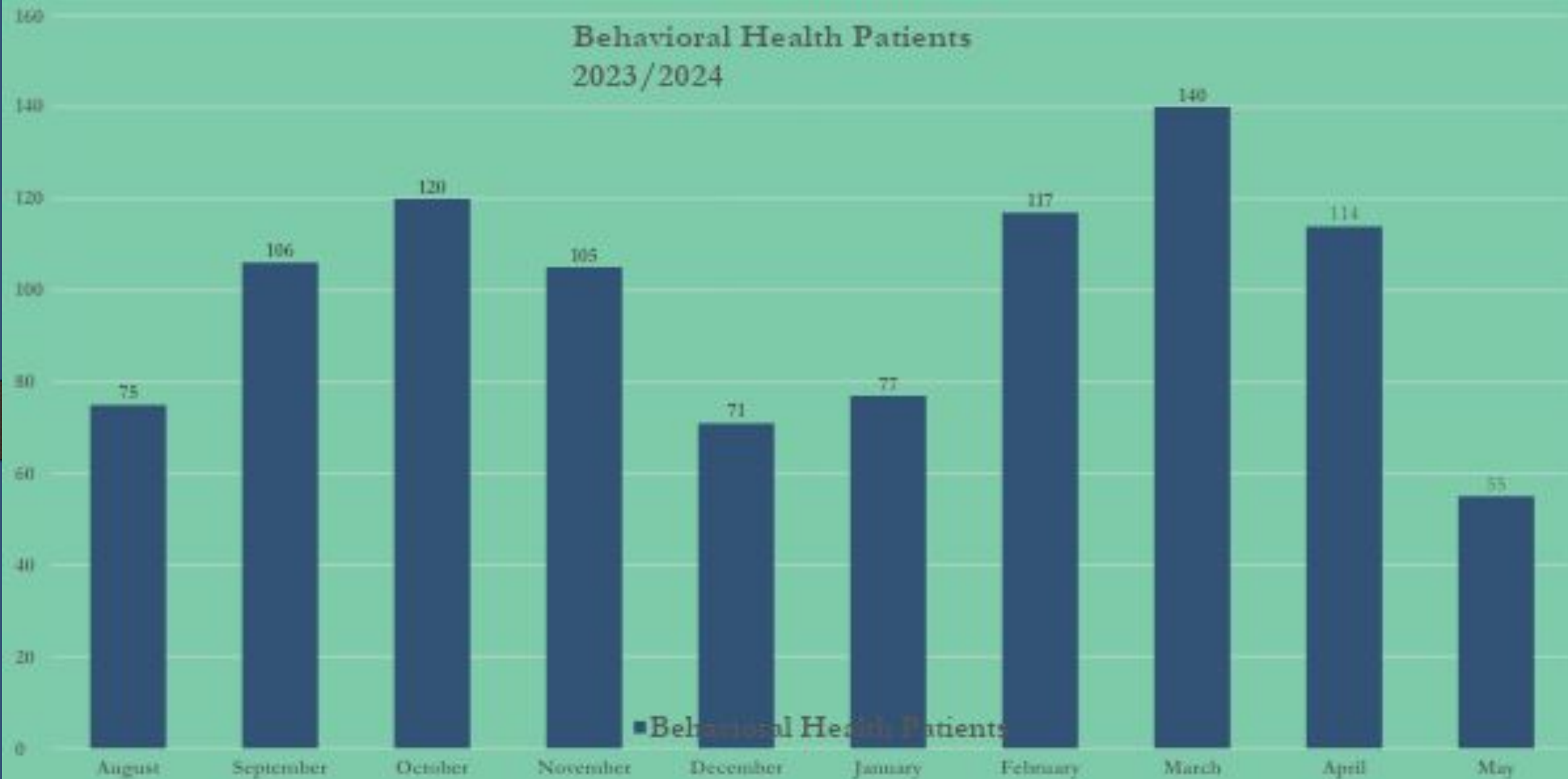
Powell County 2023/2024 School Year



Powell County Schools
2023/2024



Behavioral Health Patients 2023/2024





STERLING **HEALTH CARE**

Extraordinary care for all of you

**Thank you for choosing Sterling Health Care to be
part of your team!**
