



DEPARTMENT OF FACILITIES

**DANNY CLEMENS, DIRECTOR**  
TRACY PARSLEY, MAINTENANCE SUPERVISOR  
THOMAS STOKES, CUSTODIAL SUPERVISOR  
GEORGE BROCK, ENERGY MANAGER

**MEMO**

**TO:** Dr. Jesse Bacon, Superintendent  
**FROM:** Danny Clemens, Director of Facilities  
**Date:** May 8, 2024  
**RE:** Bernheim - Change Order 16 - Exposed Ductwork in Flex Room **DC**

The ductwork that serves Flex Classroom 105 is in an exposed area - Design Intent calls for all exposed ductwork to be the spiral type that is painted. We asked Calhoun to price the work to replace the insulated square duct with a spiral double wall. Currently Flex Room 112 has the painted spiral duct. Work involved with this Change Order includes replacement of work already in place, therefore, the Design Team will cover the cost of the labor, overhead and profit and taxes to offset the cost burden to the District. The only added cost to the district is for the spiral duct material and paint as requested with this Changer Order. COR 12 includes a breakout of costs the Design Team will cover versus Bullitt County.

**I recommend approval of this request.**

*Attached paperwork is listed below with **action items** noted for each:*

- G701-2017 - Change Order 16 - Exposed Duct at Flex Room - for Board Signature
- CO 16 - FACPAC - Exposed Ductwork in Flex Room - For Board Signature
- COR-12 ASI 11 Exposed Ductwork REV2 - No action – for Board Reference.

*TWood*

**OUR MISSION IS TO INSPIRE AND EQUIP OUR STUDENTS TO SUCCEED IN LIFE**

**BULLITT COUNTY PUBLIC SCHOOLS IS AN EQUAL EDUCATION AND EMPLOYMENT INSTITUTION**



# AIA® Document G701® – 2017

## Change Order

**PROJECT:** *(Name and address)*  
Bernheim Middle School Renovation  
700 Audubon Drive, Shepherdsville, KY  
40165

**CONTRACT INFORMATION:**  
Contract For: General Construction  
Date: June 19, 2023

**CHANGE ORDER INFORMATION:**  
Change Order Number: 016  
Date: May 20, 2024

**OWNER:** *(Name and address)*  
Bullitt County Public Schools Board of  
Education  
1040 Hwy 44 East  
Shepherdsville, KY 40165

**ARCHITECT:** *(Name and address)*  
Studio Kremer Architects, Inc.  
1231 S. Shelby Street  
Louisville, KY 40203

**CONTRACTOR:** *(Name and address)*  
Calhoun Construction Services, Inc.  
7707 National Turnpike  
Louisville, Kentucky 40218

**THE CONTRACT IS CHANGED AS FOLLOWS:**

*(Insert a detailed description of the change and, if applicable, attach or reference specific exhibits. Also include agreed upon adjustments attributable to executed Construction Change Directives.)*

See COR #12 and ASI #11 for scope of Work included in this Change Order.

The original Contract Sum was	\$	20,787,544.59
The net change by previously authorized Change Orders	\$	-640,502.63
The Contract Sum prior to this Change Order was	\$	20,147,041.96
The Contract Sum will be increased by this Change Order in the amount of	\$	3,834.00
The new Contract Sum including this Change Order will be	\$	20,150,875.96

The Contract Time will be unchanged by Zero (0) days.  
The new date of Substantial Completion will be

**NOTE:** This Change Order does not include adjustments to the Contract Sum or Guaranteed Maximum Price, or the Contract Time, that have been authorized by Construction Change Directive until the cost and time have been agreed upon by both the Owner and Contractor, in which case a Change Order is executed to supersede the Construction Change Directive.

**NOT VALID UNTIL SIGNED BY THE ARCHITECT, CONTRACTOR AND OWNER.**

Studio Kremer Architects, Inc.

Calhoun Construction Services, Inc.

Bullitt County Public Schools Board of  
Education

\_\_\_\_\_  
**ARCHITECT** *(Firm name)*

\_\_\_\_\_  
**CONTRACTOR** *(Firm name)*

\_\_\_\_\_  
**OWNER** *(Firm name)*

\_\_\_\_\_  
**SIGNATURE**

\_\_\_\_\_  
**SIGNATURE**

\_\_\_\_\_  
**SIGNATURE**

Catherine Noble Ward, AIA  
\_\_\_\_\_  
**PRINTED NAME AND TITLE**

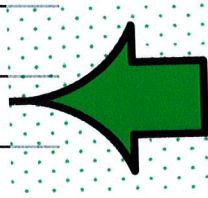
Joel Pittard, Project Manager  
\_\_\_\_\_  
**PRINTED NAME AND TITLE**

Dr. Jesse Bacon, Superintendent  
\_\_\_\_\_  
**PRINTED NAME AND TITLE**

5/8/2024  
\_\_\_\_\_  
**DATE**

5/8/2024  
\_\_\_\_\_  
**DATE**

\_\_\_\_\_  
**DATE**



# FACPAC Contract Change Order Supplemental Information Form (Ref# 59938)

Form Status: Saved

Tier 1 Project: Bernheim Middle School -Renovation  
BG Number: 23-051 District: Bullitt County (HB678)  
Status: Active Phase: Project Initiation (View Checklist)

Contract: Calhoun Construction Services, Inc., 0001, General Construction  
Type: General Contractor Proposed

Change Order Number 16  
Time Extension Required No  
Date Of Change Order 5/20/2024  
Change Order Amount To Date Increase

## Construction Contingency

Calculations below are project wide. Remaining negative Construction Contingency may require the submission of a revised BG1.

Current Approved Amount	\$1,261,761.60
Net Approved COs	\$-142,519.42
Remaining After Approved COs	\$1,404,281.02
Net All COs	\$-91,286.42
Remaining After All COs	\$1,353,048.02

This Requested Change Order Amount \$3,834.00

+/-

Change In A/E Fee This Change Order \$0.00

+/-

Change In CM Fee This Change Order \$0.00

+/-

Remaining Construction Contingency \$1,353,048.02

Balance

Contract Change Requested By Architect/Engineer

Contract Change Reason Code Improved Plans/Specs

Change Order Description And Justification

The ductwork that serves Flex Classroom 105 is in an exposed area - Design Intent calls for all exposed ductwork to be the spiral type that is painted. We asked Calhoun to price the work to replace the insulated square duct with spiral double wall. Currently Flex Room 112 has the painted spiral duct. Work involved with this Change Order includes replacement of work already in place, therefore, the Design Team will cover the cost of all the labor, overhead and profit, bond and taxes to offset the cost burden to the District. The only added cost to the district is for the spiral duct material and paint.

Cost Benefit To Owner

Work can commence with trades already on site and avoid the added cost of mobilization and general conditions.

Contract unit prices have been utilized No to support the cost associated with this change order.

**Detailed Cost Breakdown**

Contract unit prices have not been utilized, provide a detailed cost breakdown which separates labor, material, profit and overhead.

Detail Item	Amount	Percent of Total
Labor	\$1,173.00	30.59%
Materials	\$2,661.00	69.41%
Profit and Overhead	\$0.00	0.00%
Bond Insurance	\$0.00	0.00%
<b>Cost Breakdown Total:</b>	<b>\$3,834.00</b>	

Cost for this Change Order supported No by an alternate bid or competitive price quote

Explain Why

Work can commence with trades already on site and maintain the current Construction Schedule.

# Change Order Supplemental Information Form Signature Page (Online Form Ref# 59938)

  
Architect

5/8/2024

Date

N/A

Construction Manager

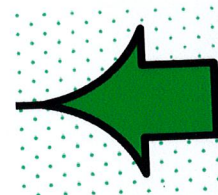
Date

Finance Officer

Date

Local Board of Education Designee

Date



# Change Order Request 17 - PCO #51 - RFP-13 Refrigerator Locations

622-Bernheim Middle School Renovation  
4/15/2024



Summary of Work

RFP-13 Refrigerator Locations

Scope - Subcontractor	Description of Scope	Cost
1 Bernheim Middle School Renovation		\$1,663.00
1.1 Architectural Wood Casework - US Specialties -	RFP-13 Refrigerator Locations minus DPO costs	(\$109.00)
1.2 Electrical - KES -	RFP-13 Refrigerator Locations	\$1,772.00
		<b>\$1,663.00</b>
Fee	5.00%	\$83
Bond	1.00%	\$17
<b>Total Amount</b>		<b>\$1,763</b>

Approved By:

\_\_\_\_\_

Date:

\_\_\_\_\_

Submitted By:



*Josya G. Lyons*

\_\_\_\_\_

Date:

4/15/2024

\_\_\_\_\_

# DPO Change Summary - RFP-13 Refrigerator Locations

622- Bernheim Middle School Renovation

4/15/2024



## Summary of Work

RFP-13 Administrative Refrigerator Locations

Scope - Subcontractor	Description of Scope	Cost
1 Bernheim Middle School		
1.2 US Specialties - DPO-1	RFP-13 Material Deduct	(\$628.00)

Revised Total Amount (\$628.00)

# REQUEST FOR PROPOSAL

---

PROJECT:	<b>Bernheim Middle School Renovation Shepherdsville, KY</b>	REQUEST FOR PROPOSAL NO.:	<b>13</b>
OWNER:	<b>Bullitt County Public Schools 1040 Highway 44 East Shepherdsville, KY 40165</b>	DATE:	<b>4-Apr-2024</b>
TO CONTRACTOR:	<b>Calhoun Construction Services, Inc. 7707 National Turnpike Louisville, KY 40218</b>	ARCHITECT:	<b>Studio Kremer Architects 1231 S Shelby Street Louisville, KY 40203</b>
		ARCHITECT'S PROJECT NO.:	<b>2022-36 BG# 23-051</b>

---

Please submit an itemized quotation for changes in the Contract Sum and/or Time incidental to proposed modifications to the Contract Documents described herein.

THIS IS NOT A CHANGE ORDER NOR A DIRECTION TO PROCEED WITH THE WORK DESCRIBED HEREIN

---

## Description:

Provide price proposal for the following:

- Item 1:** REFERENCE A5.6
- Extend the countertop along the plan north wall in the Health Room A104
  - Remove the upper wall cabinet, the lower base cabinet and modify the countertop in Corridor A110A to accommodate a full-size refrigerator.
- Item 2:** REFERENCE E4.1
- Refer to corridor A110A. Revise outlet for circuit C-29 to 4'-0" – no counter. Revise breaker to GFCI.
  - Refer to corridor A110A. Add additional above counter outlet for alcove with 20A circuit C-43
  - Refer to health A104. Revise em outlet to a dedicated 20A circuit EGC-15.
- Item 3:** REFERENCE E7.1
- Refer to updated panel schedule "C".
- Item 4:** REFERENCE E7.3
- Refer to updated panel schedule "EGC".

## Attachments:

PDF: A5.6, E4.1, E7.1, E7.3

---

ISSUED:	<b>4-Apr-2024</b>	ARCHITECT:	<b>studio kremer architects</b>
CONTRACTOR:	<b>Calhoun Construction Services, Inc.</b>	BY:	<b>Stephanie Satterfield</b>

---



APRIL 11, 2024

Change Order Proposal

Re: **Bernheim Middle School Renovation**

Calhoun Construction,

We are pleased to quote the following change order for the above referenced project:

RFP-13 revisions:

**Sect. 123200 – Plastic Laminate Casework**

*Included: Lengthen countertop in A104 Health. Delete 1 base cabinet and 1 wall cabinet from casework elevation in A110A Corridor.*

<b>Material CREDIT =</b>	<b><u>-\$628.00</u></b>
<b>Labor CREDIT =</b>	<b><u>-\$109.00</u></b>

---

*We DO NOT include ANYTHING not specifically listed above.*

Thank you for your consideration of this proposal. We hope to be of service to you on this project. Please call if you should have any questions.

Sincerely,

US SPECIALTIES

*Jason A. Lilly*

Jason A. Lilly  
Project Manager



**Change Order #KES-0004 - RFP-13**

<b>Creator</b>	Keith Joseph (Kentuckiana Electrical Services)	<b>Total cost</b>	1,771.52 USD
<b>Assignee</b>	Keith Joseph (Kentuckiana Electrical Services)	<b>Reason</b>	Design change
<b>Status</b>	Pending approval	<b>Reference number</b>	—
<b>Due date</b>	—	<b>Schedule impact?</b>	No
<b>Description</b>	Per RFP-13 Add Duplex Outlet and GFCI Breaker		

**Response (rev.0)**

<b>Responded by</b>	—	<b>Responded on</b>	—
<b>Notes</b>	—		
<b>Attachments</b>	—		

**Cost (rev.0)**

<b>Submitted by</b>	Keith Joseph (Kentuckiana Electrical Services)	<b>Submitted on</b>	04/15/24
<b>Notes</b>	—		
<b>Backup documents</b>	—		

<b>Cost summary (USD)</b>	
Materials	1,642.66
Labor	44.50
Equipment	—
Subcontractor	—
Other	—
Markups	84.36
Final Markups	—
<b>Total</b>	<b>1,771.52</b>

\_\_\_\_\_  
**Submitter signature** **Date**

\_\_\_\_\_  
**Approver signature** **Date**



Cost breakdown (rev.0)

**Materials**

#	ITEM NAME	QUANTITY	UNIT TYPE	UNIT COST (USD)	ITEM COST (USD)
1	20 Amp GFCI Breaker	1.0	Each	158.66	158.66
2	Duplex Receptacle	1.0	Each	329.00	329.00
3	3/4" EMT	55.0	Linear feet	9.00	495.00
4	#12 THHN	165.0	Linear feet	4.00	660.00
<b>MATERIALS</b>					<b>1,642.66</b>

**Labor**

#	ITEM NAME	QUANTITY	UNIT TYPE	UNIT COST (USD)	ITEM COST (USD)
1	Breaker Change Labor	0.5	Hours	89.00	44.50
<b>LABOR</b>					<b>44.50</b>

**SUBTOTAL**

**1,687.16**

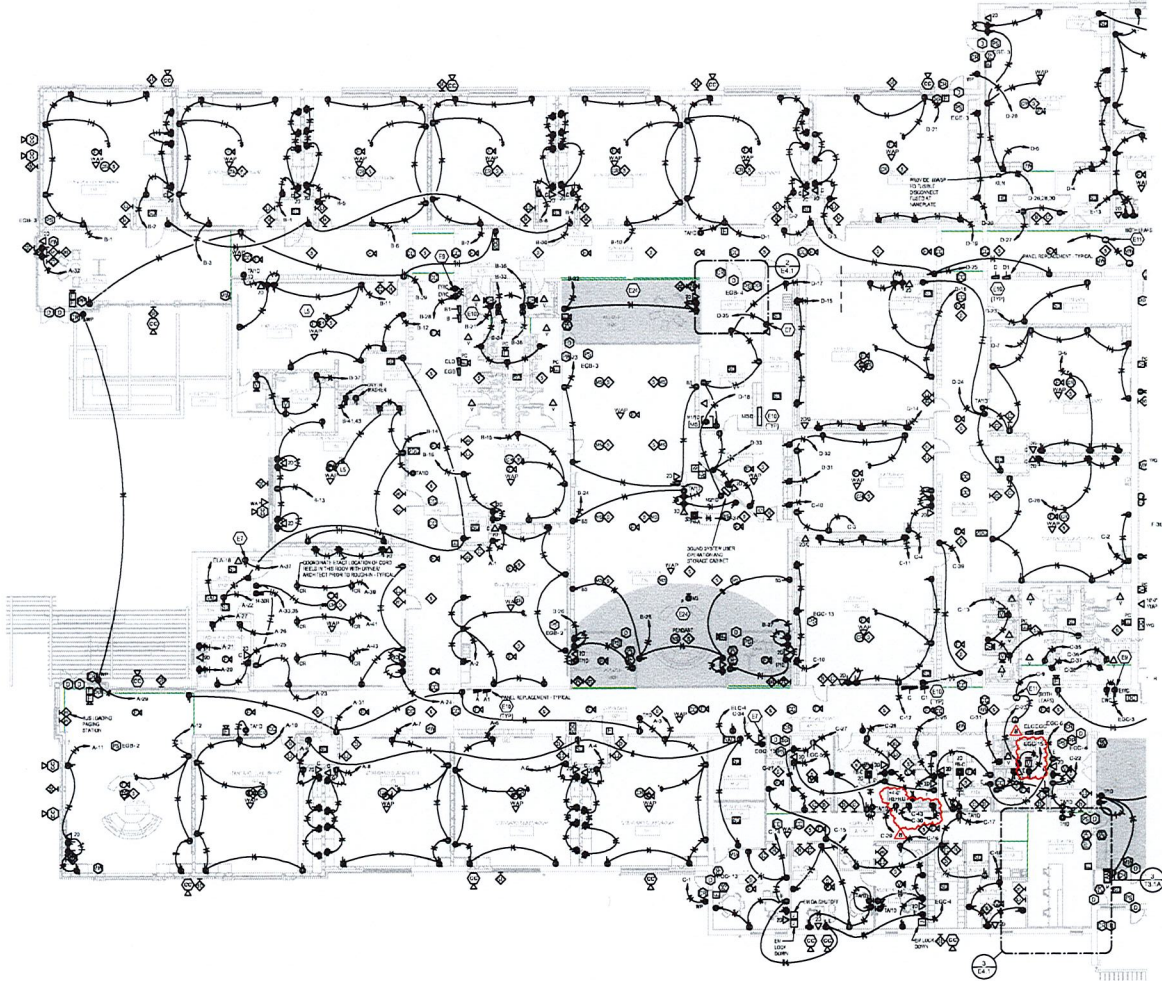
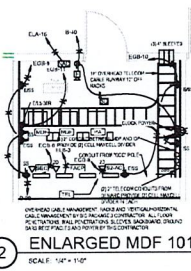
Cost breakdown (rev.0) - Continued

Markups

#	ITEM NAME	APPLIED TO (USD)	PERCENTAGE	ITEM COST (USD)
1	Labor Mark-up	Labor: 44.50 USD	5.00%	2.23
2	Material Mark-up	Materials: 1,642.66 USD	5.00%	82.13
			<b>MARKUPS</b>	84.36
			<b>SUBTOTAL + MARKUPS</b>	1,771.52

**TOTAL** **1,771.52**





**ENLARGED RECEPTION A101**  
SCALE: 1/4" = 1'-0"

**PARTIAL FIRST FLOOR POWER - AREA A**  
SCALE: 3/32" = 1'-0"

PANELBOARD AND WIRING SCHEDULE. PANEL A. MAINS TYPE: 140. VOLTAGE: 208Y/120/3P/4W. AMPERES: 250 A. SCHEMATIC: 10. AVAIL. FAULT CURRENT (KA): 50.0. SUPPLY FROM: 101. CIRCUIT DESCRIPTION, NOTE, WIRE, GND, C, DCP, P, DCT, A, B, C, D, DPT, C, D, DPT, WIRE, NOTE, CIRCUIT DESCRIPTION.

PANELBOARD AND WIRING SCHEDULE. PANEL B. MAINS TYPE: 140. VOLTAGE: 208Y/120/3P/4W. AMPERES: 250 A. SCHEMATIC: 10. AVAIL. FAULT CURRENT (KA): 50.0. SUPPLY FROM: 101. CIRCUIT DESCRIPTION, NOTE, WIRE, GND, C, DCP, P, DCT, A, B, C, D, DPT, C, D, DPT, WIRE, NOTE, CIRCUIT DESCRIPTION.

PANELBOARD AND WIRING SCHEDULE. PANEL C. MAINS TYPE: 140. VOLTAGE: 208Y/120/3P/4W. AMPERES: 250 A. SCHEMATIC: 10. AVAIL. FAULT CURRENT (KA): 50.0. SUPPLY FROM: 101. CIRCUIT DESCRIPTION, NOTE, WIRE, GND, C, DCP, P, DCT, A, B, C, D, DPT, C, D, DPT, WIRE, NOTE, CIRCUIT DESCRIPTION.

PANELBOARD AND WIRING SCHEDULE. PANEL A1. MAINS TYPE: 140. VOLTAGE: 208Y/120/3P/4W. AMPERES: 250 A. SCHEMATIC: 10. AVAIL. FAULT CURRENT (KA): 50.0. SUPPLY FROM: 101. CIRCUIT DESCRIPTION, NOTE, WIRE, GND, C, DCP, P, DCT, A, B, C, D, DPT, C, D, DPT, WIRE, NOTE, CIRCUIT DESCRIPTION.

PANELBOARD AND WIRING SCHEDULE. PANEL B1. MAINS TYPE: 140. VOLTAGE: 208Y/120/3P/4W. AMPERES: 250 A. SCHEMATIC: 10. AVAIL. FAULT CURRENT (KA): 50.0. SUPPLY FROM: 101. CIRCUIT DESCRIPTION, NOTE, WIRE, GND, C, DCP, P, DCT, A, B, C, D, DPT, C, D, DPT, WIRE, NOTE, CIRCUIT DESCRIPTION.

PANELBOARD AND WIRING SCHEDULE. PANEL C1. MAINS TYPE: 140. VOLTAGE: 208Y/120/3P/4W. AMPERES: 250 A. SCHEMATIC: 10. AVAIL. FAULT CURRENT (KA): 50.0. SUPPLY FROM: 101. CIRCUIT DESCRIPTION, NOTE, WIRE, GND, C, DCP, P, DCT, A, B, C, D, DPT, C, D, DPT, WIRE, NOTE, CIRCUIT DESCRIPTION.

PANELBOARD AND WIRING SCHEDULE. PANEL D. MAINS TYPE: 140. VOLTAGE: 208Y/120/3P/4W. AMPERES: 250 A. SCHEMATIC: 10. AVAIL. FAULT CURRENT (KA): 50.0. SUPPLY FROM: 101. CIRCUIT DESCRIPTION, NOTE, WIRE, GND, C, DCP, P, DCT, A, B, C, D, DPT, C, D, DPT, WIRE, NOTE, CIRCUIT DESCRIPTION.

PANELBOARD AND WIRING SCHEDULE. PANEL D1. MAINS TYPE: 140. VOLTAGE: 208Y/120/3P/4W. AMPERES: 250 A. SCHEMATIC: 10. AVAIL. FAULT CURRENT (KA): 50.0. SUPPLY FROM: 101. CIRCUIT DESCRIPTION, NOTE, WIRE, GND, C, DCP, P, DCT, A, B, C, D, DPT, C, D, DPT, WIRE, NOTE, CIRCUIT DESCRIPTION.

PANELBOARD AND WIRING SCHEDULE. PANEL D2. MAINS TYPE: 140. VOLTAGE: 208Y/120/3P/4W. AMPERES: 250 A. SCHEMATIC: 10. AVAIL. FAULT CURRENT (KA): 50.0. SUPPLY FROM: 101. CIRCUIT DESCRIPTION, NOTE, WIRE, GND, C, DCP, P, DCT, A, B, C, D, DPT, C, D, DPT, WIRE, NOTE, CIRCUIT DESCRIPTION.

INTEGRATED BID SET - CONSTRUCTION DOCUMENTS  
ELECTRICAL SCHEDULES  
IC#4 23-051  
DATE: 05/03/2023  
DRAWN BY: AND  
CHECKED BY: CARR  
REVISIONS  
2022-36  
E7.1  
MICHAEL BIEL  
MEP  
HAS PREPARED FOR  
CONTRACTORS USE  
OF THIS DOCUMENT  
DO NOT REPLY TO  
QUESTIONS  
RESPONSIBILITY TO  
REVIEW, VERIFY, AND  
DELETE  
INFORMATION  
RESULT IN A MODIFIED  
NO. 1, 2, 1, 1  
BENJAMIN MIDDLE SCHOOL RENOVATION  
SCHOOLCITY, IN 47505  
TEL: 502.498.1100 FAX: 502.498.1101

