

DANNY CLEMENS, DIRECTOR
TRACY PARSLEY, MAINTENANCE SUPERVISOR
THOMAS STOKES, CUSTODIAL SUPERVISOR
GEORGE BROCK, ENERGY MANAGER

DEPARTMENT OF FACILITIES

MEMO

TO: Dr. Jesse Bacon, Superintendent
FROM: Danny Clemens, Director of Facilities
Date: April 22, 2024
RE: Developmental Design - Phase 2 Athletics **DC**

Presented for consent is the Design Developmental Drawings for the Athletics 2 Project.

.I recommend approval of this request.

Attachment:

- [Phase 2 Athletics - Board Review Set - DD - 4-12-2024.pdf](#)

A handwritten signature in blue ink, appearing to read 'M. Wood', is located in the bottom right corner of the page.

OUR MISSION IS TO INSPIRE AND EQUIP OUR STUDENTS TO SUCCEED IN LIFE

BULLITT COUNTY PUBLIC SCHOOLS IS AN EQUAL EDUCATION AND EMPLOYMENT INSTITUTION

BCPS PHASE II ATHLETICS

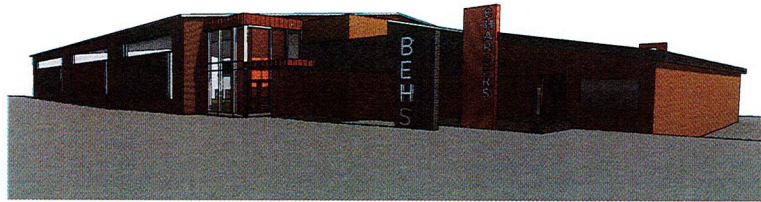
BULLITT CENTRAL, BULLITT EAST AND NORTH BULLITT

BULLITT COUNTY PUBLIC SCHOOLS

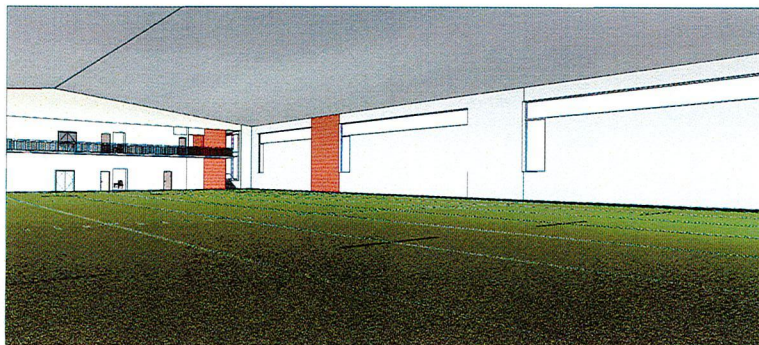
SHEPHERDSVILLE, MT WASHINGTON & HEBRON, KENTUCKY

ska# 2023-50

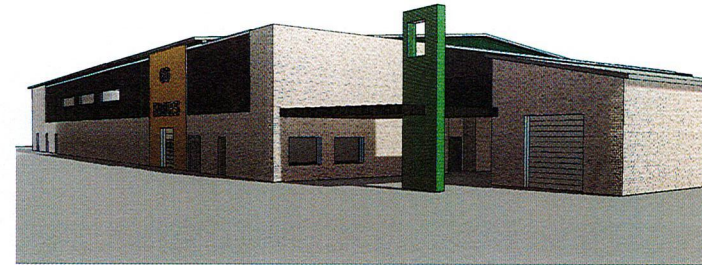
DESIGN DEVELOPMENT SUBMISSION BOARD REVIEW SET



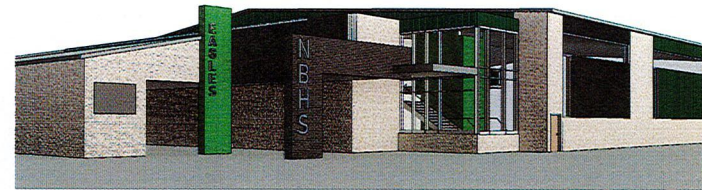
5 BEHG - Perspective - Front Facade



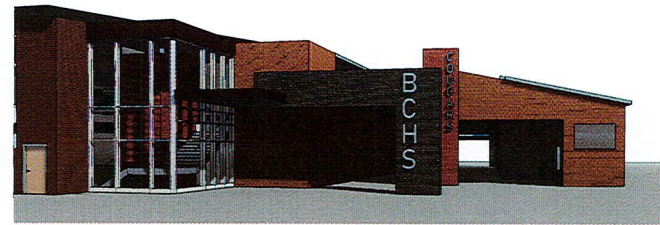
6 BEHG Field



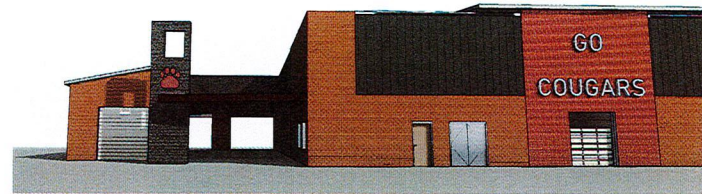
5 NBHG - Perspective - Field Side View



6 NBHG - Perspective - Main Entry Gate



5 NBHG - Perspective - Main Gateway Entrance



5 NBHG - Perspective - Field and Concession View



studio kremer architects
1217 S. 20th St. Louisville, KY 40203
502.261.1121 | www.studiokremer.com



COVER SHEET
BCPS PHASE II ATHLETICS
ARCHITECTURAL DESIGN DEVELOPMENT SUBMISSION

BC# 24-192
DATE: 06/20/24
DRAWN BY: JMK
CHECKED BY: JMK

2023-50

G0.0

DESIGN DEVELOPMENT