



March 18, 2024 Design and Construction Update





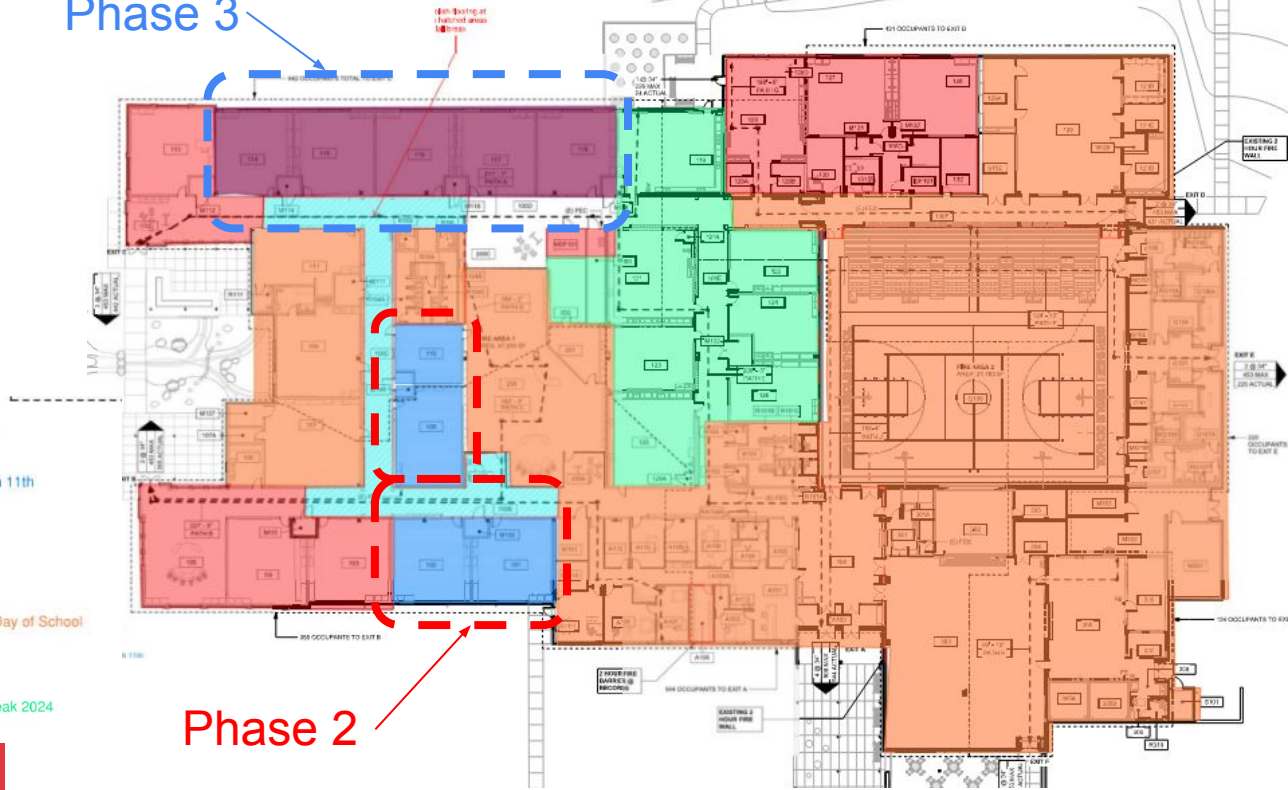
MOVING FORWARD

Bernheim Middle School - Construction



studio kremer architects

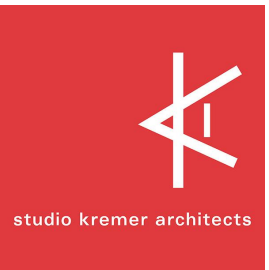
Phase 3



BC

MOVING FORWARD

Bernheim Middle School - Construction Phase 2 Underway - Phase 3 - Begins Mid-March



studio kremer architects



MOVING FORWARD

Bernheim Middle School - Construction Exterior Views



studio kremer architects



Bernheim Middle School - Construction Exterior Views



studio kremer architects



MOVING FORWARD



studio kremer architects

Bernheim Middle School - Construction Exterior Views



MOVING FORWARD



MOVING FORWARD

Bernheim Middle School - Construction Exterior Views



studio kremer architects



Bernheim Middle School - Construction Interior Views



studio kremer architects



BC

MOVING FORWARD



Bernheim Middle School - Construction Interior Views

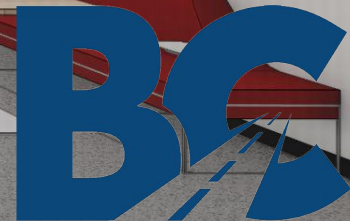


studio kremer architects



BC

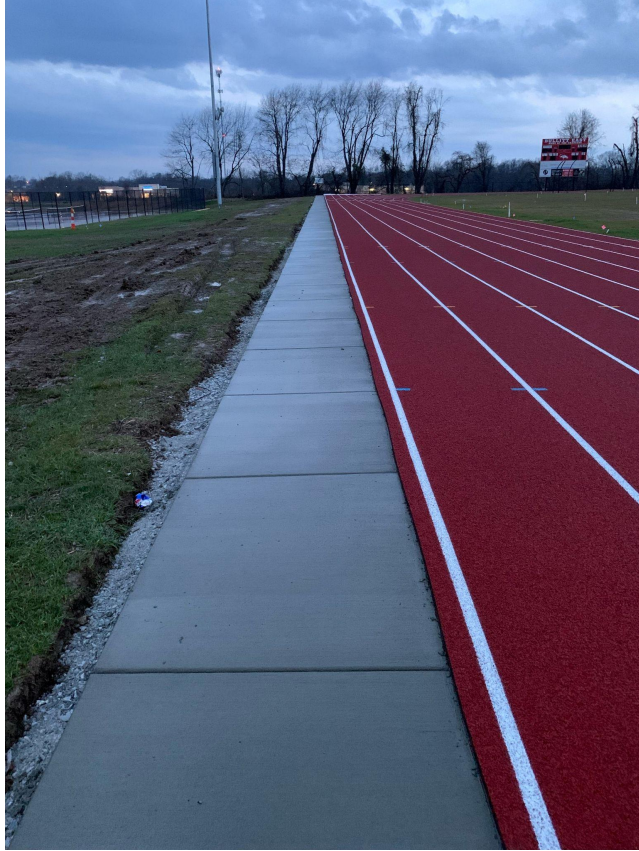
MOVING FORWARD



Bullitt East High School - Construction



studio kremer architects



studio kremer architects

Bullitt East High School Construction



MOVING FORWARD



studio kremer architects

Bullitt East High School Construction



MOVING FORWARD



studio kremer architects

Bullitt East High School Construction



MOVING FORWARD

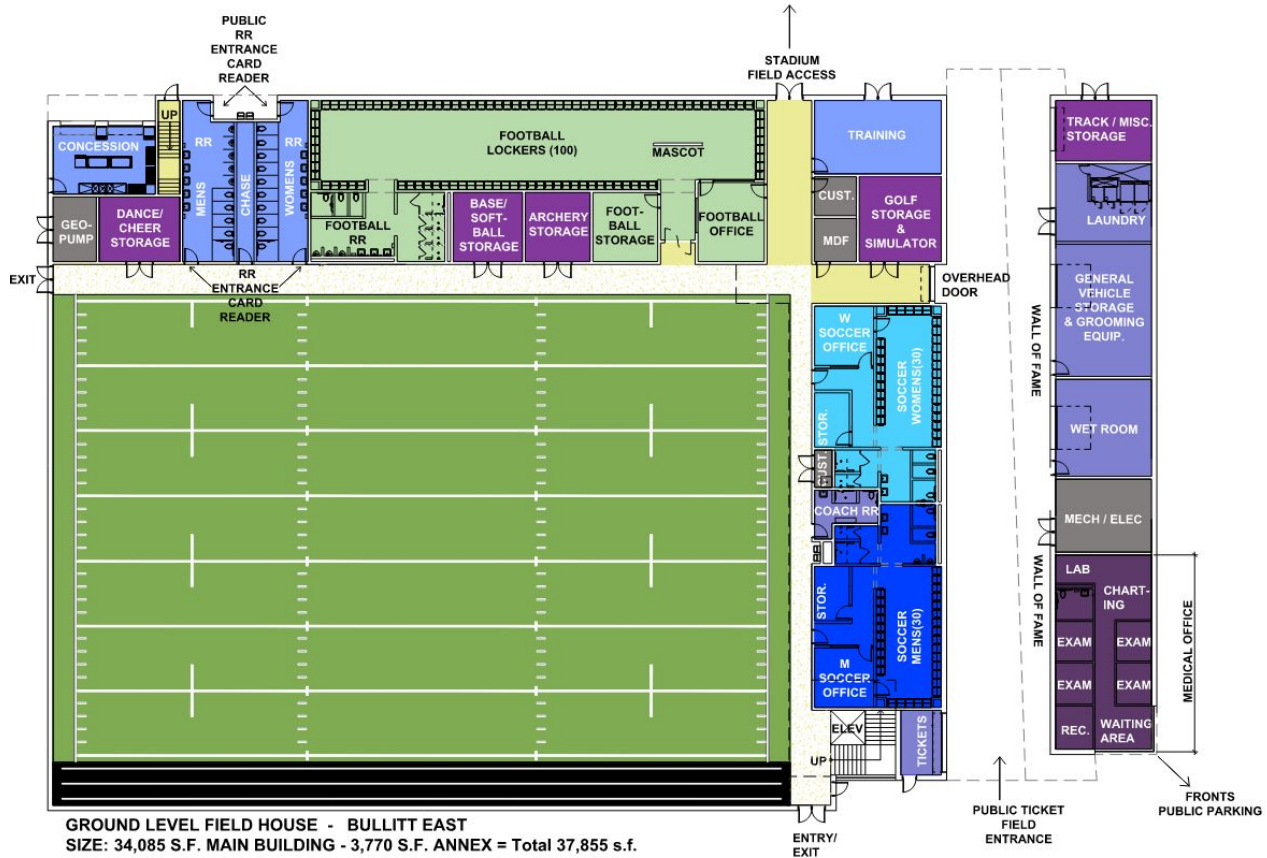


studio kremer architects

Phase 2 Athletics & Field Houses - Design Development



Ground Level

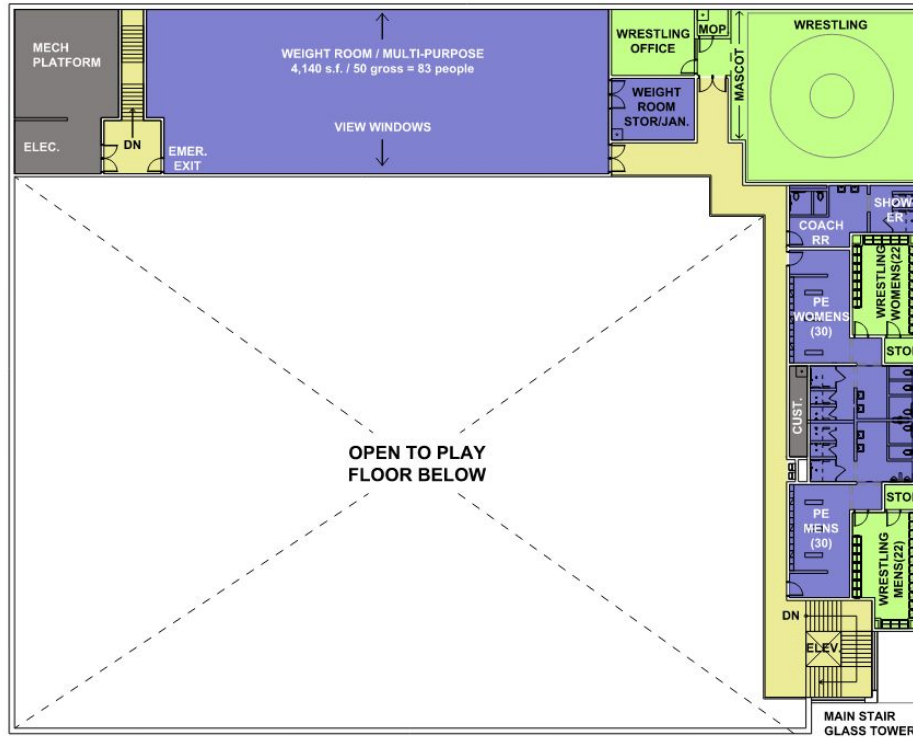


Phase 2 Athletics and Field Houses Design Development - Field House Plans



Second Level

VIEW OUT TO FOOTBALL/SOCCER FIELD



PLAN LEGEND

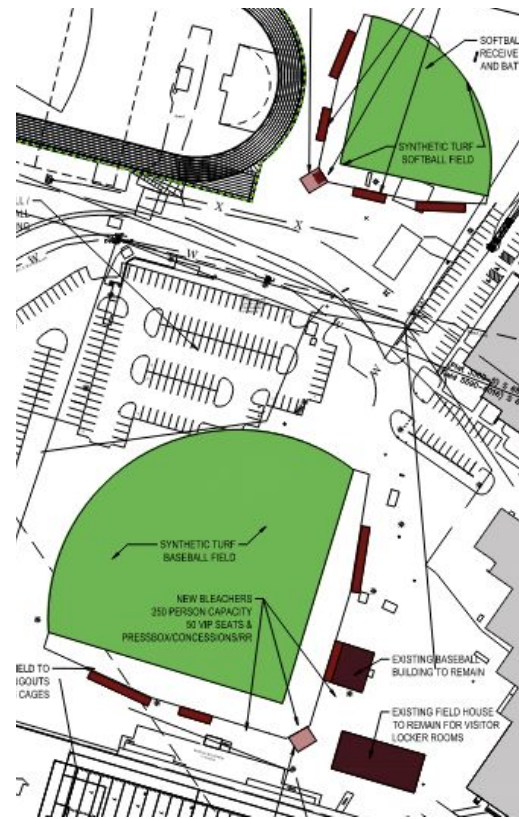
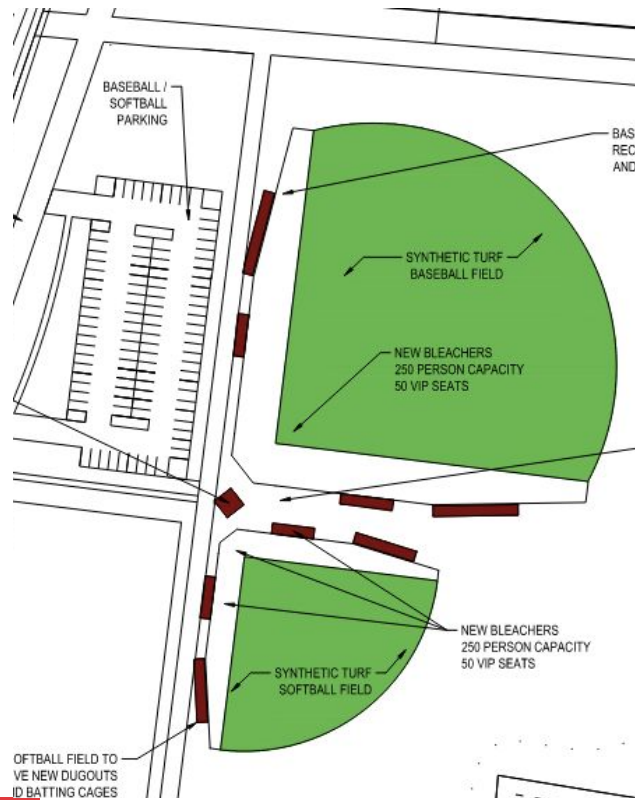
- MEP, JAN. SPACES
- CIRCULATION
- WRESTLING
- FOOTBALL
- SOCCER WOMENS
- SOCCER MENS
- GENERAL USE
- SPORT STORAGE
- MEDICAL OFFICE

SECOND LEVEL FIELD HOUSE
SIZE: 12,310 S.F.



Phase 2 Athletics and Field Houses Design Development - Field House Plans





Phase 2 Athletics and Field Houses - Design Development - Site





studio kremer architects

Phase 2 Athletics and Field Houses - Schematic Design - Field House Plans



MOVING FORWARD