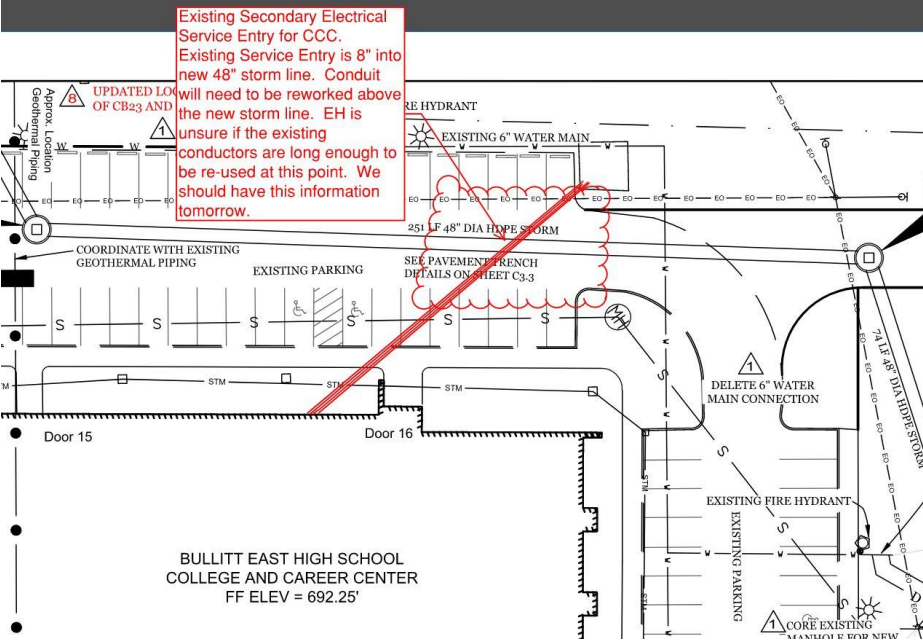


# Change Order - Relocation of Existing Secondary Electrical Lines:

EH is installing the new 48” storm line across the CCC parking lot at Bullitt East. As they crossed the parking lot, they found the secondary electrical line was in conflict with the new storm pipe. EH excavated around the area to see if they could possibly shift the secondary electrical line above the new Storm Pipe, unfortunately, there is not enough clearance to do so. The top of the existing electrical conduit is 64” and the top of the storm pipe is 57” below ground. Due to drainage slopes, we cannot shift the storm pipe in elevation, so the electrical line needs to be relocated ABOVE the storm pipe.



**Bullitt East High School  
Construction**

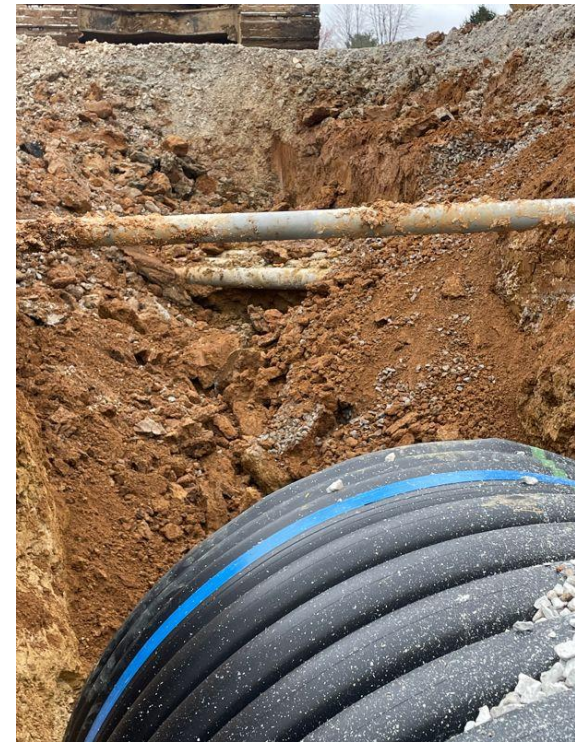


## Change Order - Relocation of Existing Secondary Electrical Lines:

Typically – secondary electrical lines are installed roughly 36” below ground level. We had assumed during design the storm pipe would be able to in be installed below the existing secondary electrical line.

**We do view this is an unforeseen condition and subject to a change order to rectify and improve the final product.**

**The End-Result** would be all-new secondary electrical wiring from a new pull box located in the grass lawn between he CCC and parking lot that sits above the Storm Line. When the College and Career building was constructed, there were no pull boxes installed to allow for incremental replacement of the secondary line. If this change is approved, there will be more serviceability of the electrical line once the BEHS Fine Arts project is complete.



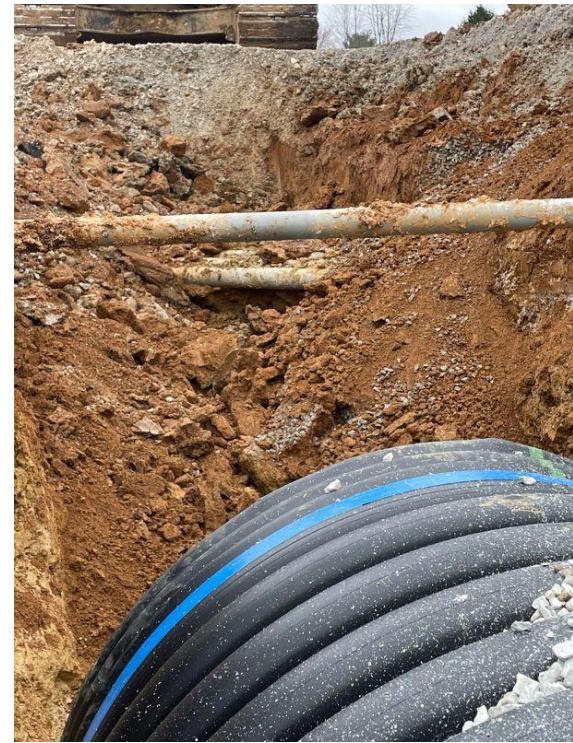
studio kremer architects

**Bullitt East High School  
Construction**



## Change Order - Relocation of Existing Secondary Electrical Lines:

- **Change Order Potential Cost:** \$33,000 - \$35,000
- **Time Frame** – due to a required outage at the CCC to modify the secondary, EH is requesting work be done during Monday's Bullitt Day (March 11<sup>th</sup>). We requested preliminary approval prior to this meeting from BCPS leadership to allow work to commence during a scheduled day off for students.
- **Board Action Item** - We will provide formal Change Order paperwork in an upcoming meeting - no Board action is required at this time.



studio kremer architects

Bullitt East High School  
Construction



BC  
MOVING FORWARD