

---

---

# Bullitt Co Board of Education Work Session

March 11, 2024

---



BULLITT  
COUNTY  
PUBLIC  
SCHOOLS

Moving Forward

# Phase 2 Extracurricular Schematic Design





studio kremer architects

# Phase 2 Athletics & Field Houses - Schematic Design

March 11, 2024



MOVING FORWARD

February	5	BCPS Work Session
	26	BCPS Board Meeting – <i>Updated Board on Phase 2 Athletics Progress</i>
March	11	BCPS Work Session <i>Request Board Approval of SD</i>
	12	<u>Submit SD to KDE / Start DD</u> >4 Weeks to DD
	25	BCPS Board Meeting
April	8	BCPS Work Session, <i>Request Board Approval of DD</i>
	9	<u>Submit DD to KDE / Start CD</u> >6 Weeks to CD
	15	State Senate Vote on HB 678 Extension
	22	BCPS Board Meeting
	30	<i>Design Team Provide 75% CD Drawings and Specifications for Internal &amp; BCPS Review</i>
May	13	BCPS Work Session
	20	BCPS Board Meeting, <i>Request Board Approval of CD</i>
	21	<u>Release for Bid / Submit for Permits</u> >3 Weeks to Bid Opening
June	4	Pre-Bid Conference
	10	BCPS Work Session - <i>Request Board Approval of CD and Bid Release</i>
	11	<b>BID OPENING DATE  </b> <b>SPECIAL BOARD MEETING JUNE 11<sup>th</sup> to Approve BOND Documents</b>
	13	Contract Due Diligence by Design Team 13 <sup>th</sup> – 17 <sup>th</sup>
	17	BCPS Board Meeting - <i>Request Board Approval of GC Contract</i>
	18	<u>Notice to Proceed; Start Construction</u>

## CONSTRUCTION PHASE

### 18 months

- Baseball/Softball Season Noted in Green
- Football Season Noted in Orange

1. June *Initiate Work on Softball and Baseball Fields (9-Months)*
2. July
3. August
4. September
5. October
6. November
7. December *Initiate Work on Field Houses & Plazas (7-Months / 12-Months)*
8. **January 2025**
9. February **Baseball/Softball Season '25 Starts – Field Substantial Completion**
10. March
11. April
12. May
13. June
14. July **Field House Plaza & Restrooms and Medical Office– Ready for Football '25**
15. August
16. September
17. October
18. November **Field House – Building Substantial Completion**



# Phase 2 Athletics and Field Houses Schematic Design - Schedule



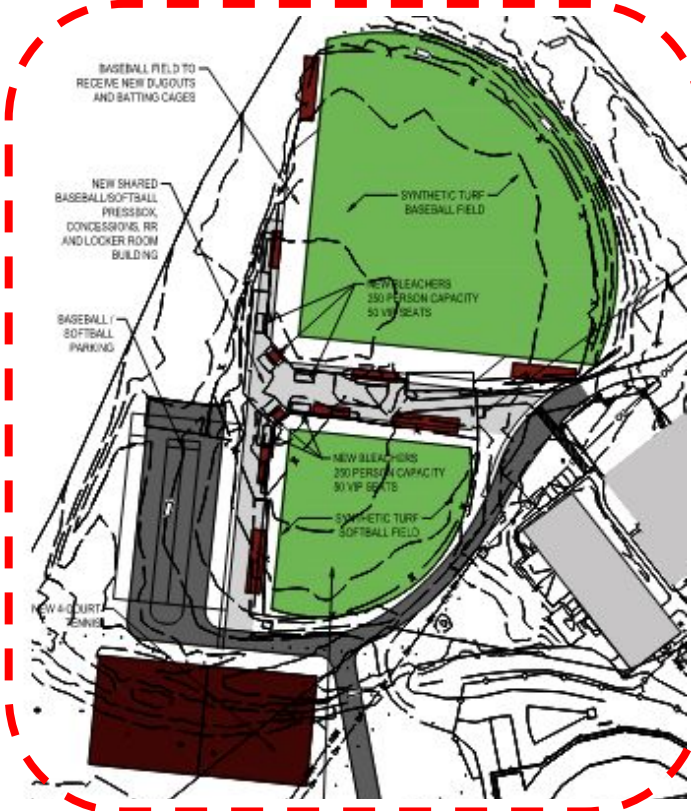
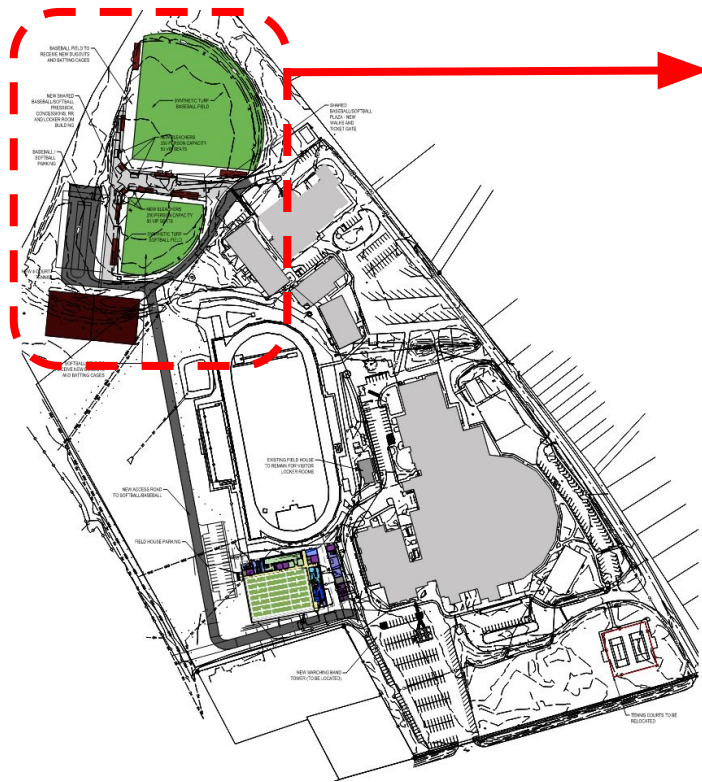


studio kremer architects

## Phase 2 Athletics and Field Houses Schematic Design - Bullitt Central



MOVING FORWARD

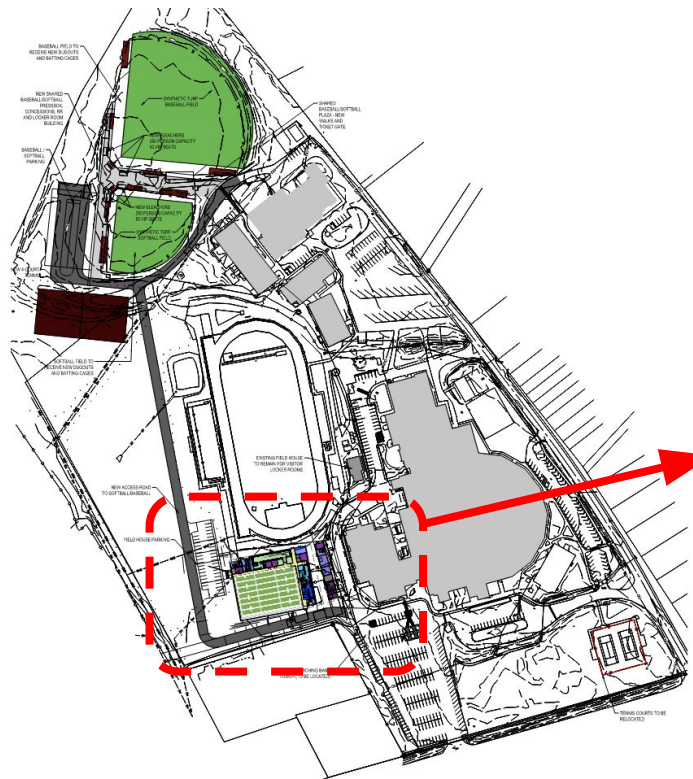


- Synthetic Turf fields
- New Dugouts
- New Batting Cages
- (4) New Tennis Courts
- Added Parking
- Shared Concessions & RR Building w/Locker Rooms
- New Pressbox
- New 250 Person Bleachers each field.
- Centralized Field Plaza



# Phase 2 Athletics and Field Houses Schematic Design - Bullitt Central





- New Field House
- Parking to Serve Field House
- Stadium Plaza that increases standing crowd room between field house and field.
- Existing Field House renovated for Visitor Locker Rooms.
- New Band Tower
- New Access Road



## Phase 2 Athletics and Field Houses Schematic Design - Bullitt Central

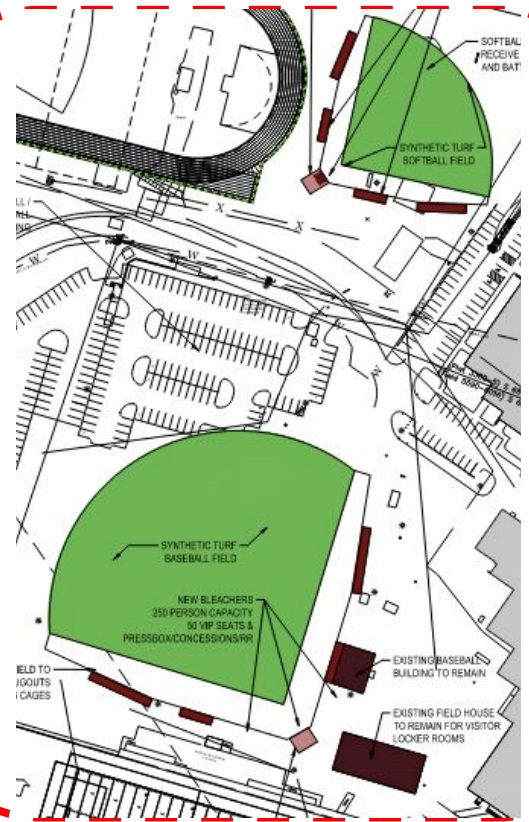
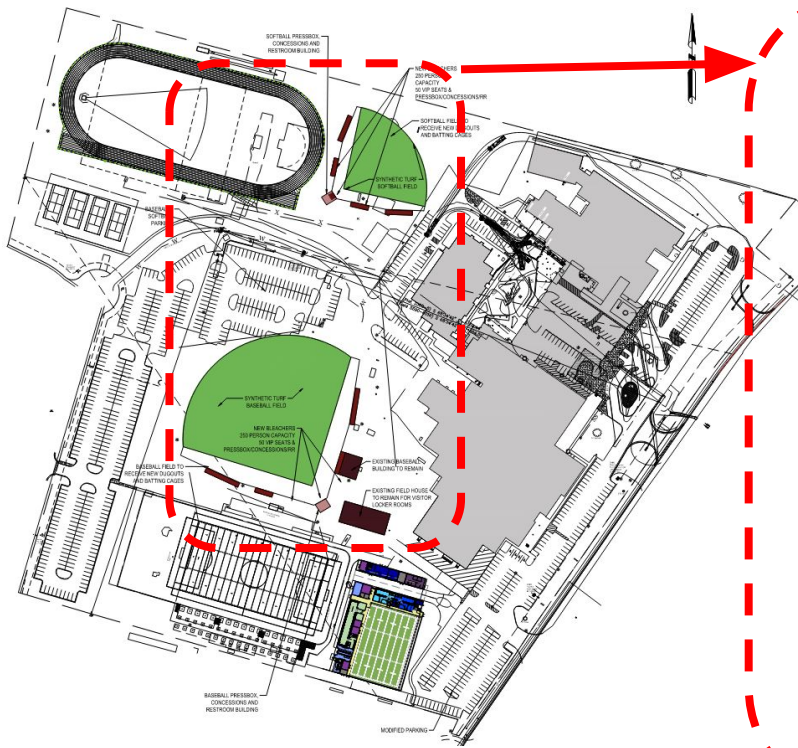


studio kremer architects

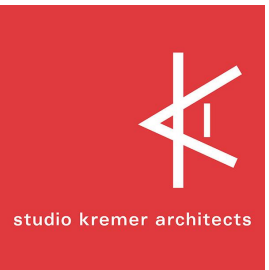
## Phase 2 Athletics and Field Houses Schematic Design - Bullitt East





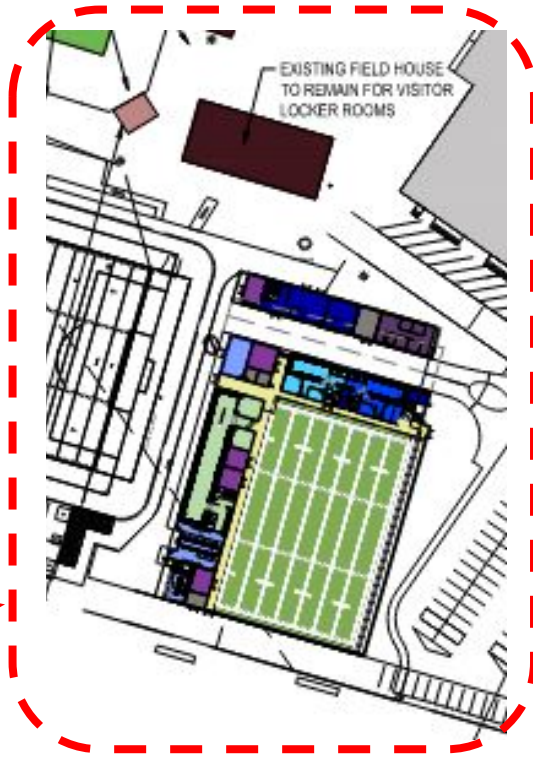
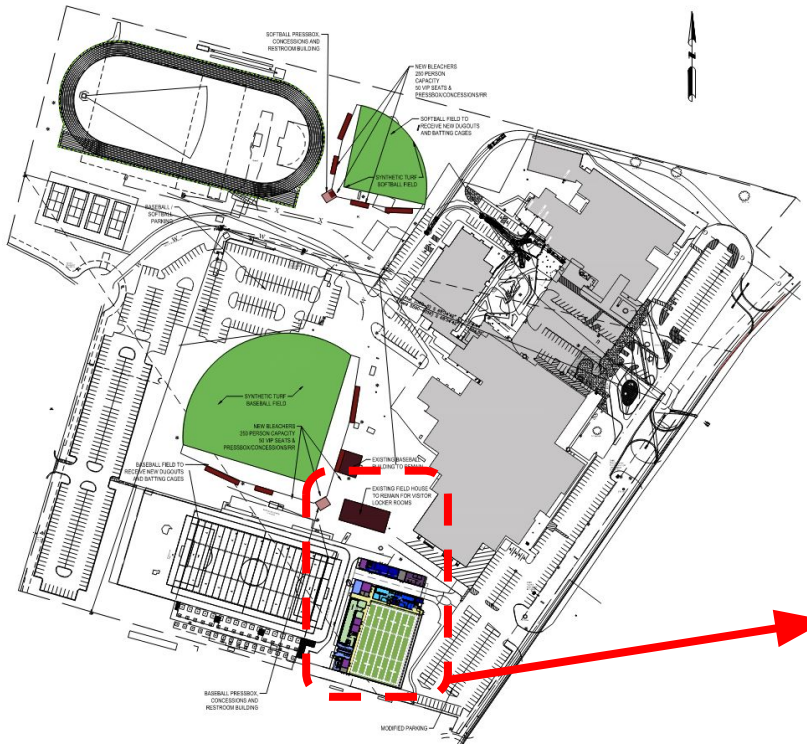


- Synthetic Turf fields
- New Dugouts
- New Batting Cages
- Added Parking
- Concessions & RR Building w/Locker Rooms
- New 250 Person Bleachers and Press Box each field.



# Phase 2 Athletics and Field Houses Schematic Design - Bullitt East





- New Field House
- Adjusted Parking to Serve Field House with Drop-Off
- Stadium Plaza that increases standing crowd room between field house and field.
- Existing Field House renovated for Visitor Locker Rooms



# Phase 2 Athletics and Field Houses Schematic Design - Bullitt East





studio kremer architects

## Phase 2 Athletics and Field Houses Schematic Design - North Bullitt

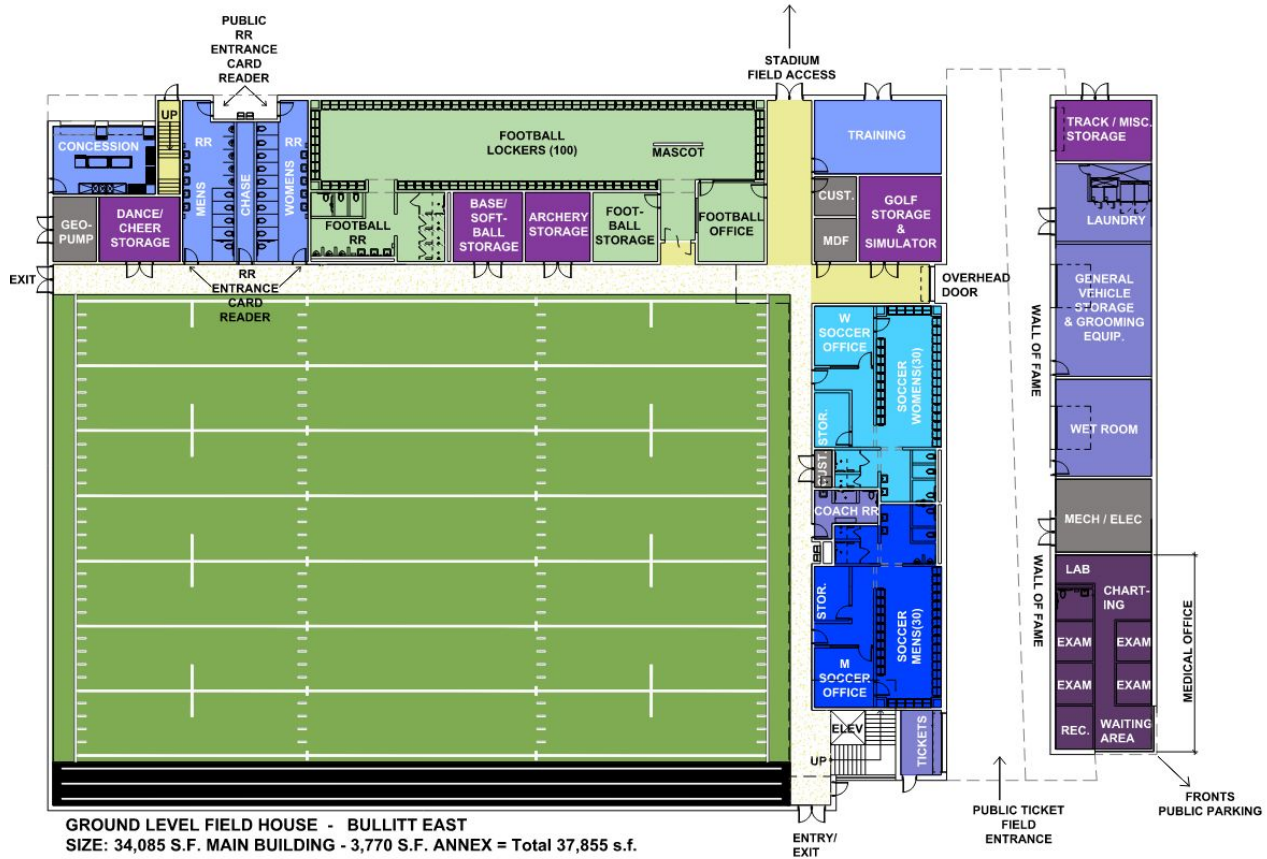


MOVING FORWARD





# Ground Level



PLAN LEGEND	
[Grey Box]	MEP, JAN. SPACES
[Yellow Box]	CIRCULATION
[Light Green Box]	WRESTLING
[Green Box]	FOOTBALL
[Light Blue Box]	SOCCER WOMENS
[Blue Box]	SOCCER MENS
[Purple Box]	GENERAL USE
[Dark Purple Box]	SPORT STORAGE
[Dark Purple Box]	MEDICAL OFFICE

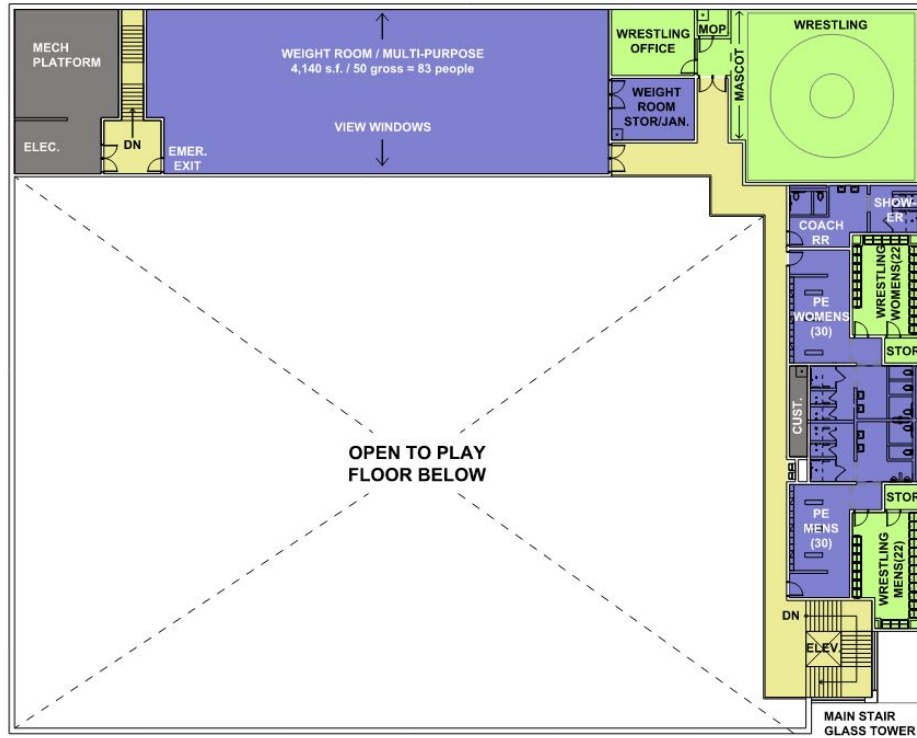


## Phase 2 Athletics and Field Houses Schematic Design - Field House Plan



# Second Level

VIEW OUT TO FOOTBALL/SOCCER FIELD



SECOND LEVEL FIELD HOUSE  
SIZE: 12,310 S.F.

## PLAN LEGEND

- MEP, JAN. SPACES
- CIRCULATION
- WRESTLING
- FOOTBALL
- SOCCER WOMENS
- SOCCER MENS
- GENERAL USE
- SPORT STORAGE
- MEDICAL OFFICE



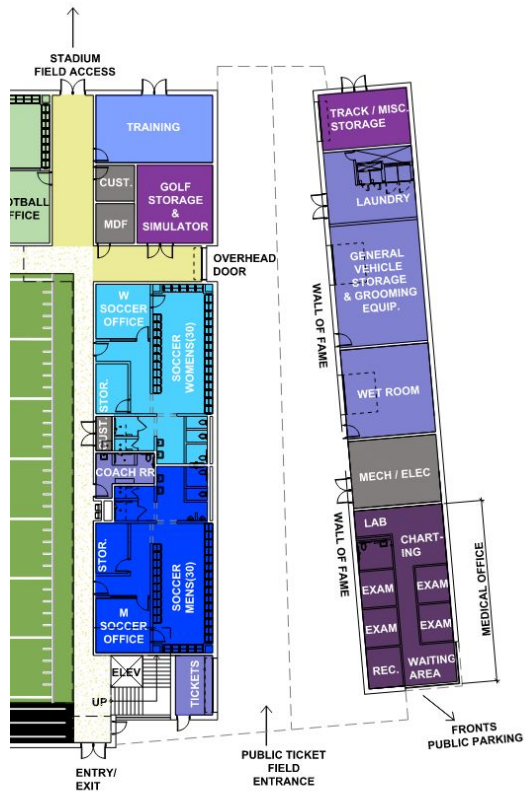
studio kremer architects

# Phase 2 Athletics and Field Houses Schematic Design - Field House Plan

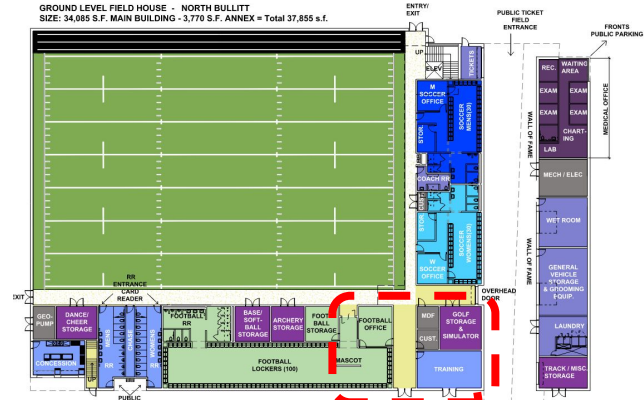


MOVING FORWARD

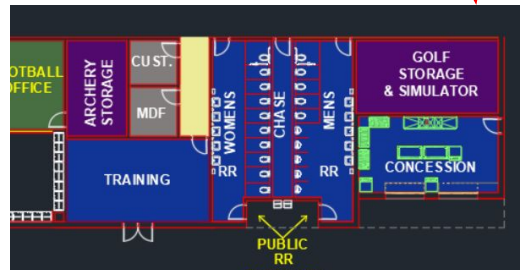
# Variations by School



Bullitt Central Annex



North Bullitt Mirrored



## PLAN LEGEND

- MEP, JAN. SPACES
- CIRCULATION
- WRESTLING
- FOOTBALL
- SOCCER WOMENS
- SOCCER MENS
- GENERAL USE
- SPORT STORAGE
- MEDICAL OFFICE



# Phase 2 Athletics and Field Houses Schematic Design - Field House Plan



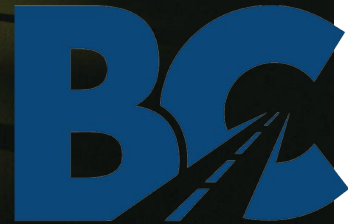




studio kremer architects

# Phase 2 Athletics & Field Houses - Schematic Design

## March 11, 2024



MOVING FORWARD

# District Office Space Discussion



# Central Office

---

Bullitt County Public Schools



studio kremer architects

March 11, 2024 - Work Session



# Goals of Central Office Project

Accommodate 100 Staff Members (Currently 70)

Increase Board Room Size + Add Training Room  
*150 Person Capacity both Rooms*

## ZONE 1

SUPPORT SERVICES

OTHER

DEPARTMENTS

## ZONE 2

CURRICULUM,  
INSTRUCTION &  
ASSESSMENT

STORAGE

## ZONE 3

PUBLIC MEETINGS  
& TRAINING

# ZONE 1

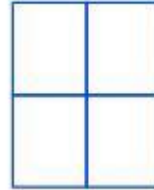
## SUPPORT SERVICES

# New Construction Option - Programming

TITLE IX



FOOD SERVICE



HOME HOSPITAL



HEALTH SERVICES

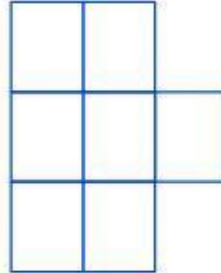


ZONE 1

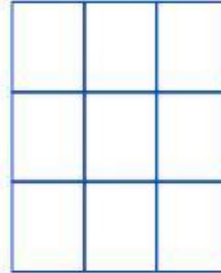
CHIEF  
OPERATIONS  
SUITE



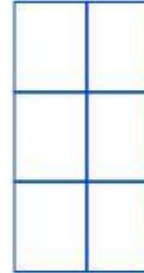
HUMAN  
RESOURCES



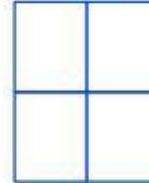
FINANCE



PEOPLE  
PERSONNEL



SOCIAL WORK



**AREA: 6,820 SF + 35% = 9,200 s.f.**

---

# ZONE 2

CURRICULUM,  
INSTRUCTION &  
ASSESSMENT

# New Construction Option - Programming

DIRECTOR OF  
SAFE AND  
DRUG FREE  
SCHOOLS



VOLUNTEER  
COORDINATOR



GRANT WRITER



ZONE 2

SUPERINTENDENT  
SUITE



SHARED SUITE  
ASSISTANT SUPERINTENDENT &  
CHIEF ACADEMIC OFFICER



SHARED SUITE  
DIRECTORS



SHARED SUITE  
SPECIAL EDUCATION



**AREA: 6,690 SF + 35% = 9,030 s.f.**

# ZONE 3

## PUBLIC MEETINGS

## & TRAINING

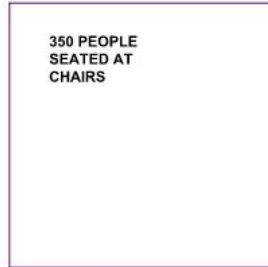
# New Construction Option - Programming

ZONE 3

TRAINING ROOM - 2,500 S.F.



BOARD ROOM - 2,500 S.F.



**AREA: 5,000 SF + 35% = 6,750 s.f.**

**OPTION 1**

TRAINING ROOM - 1,250 S.F.



BOARD ROOM - 1,250 S.F.



**AREA: 2,500 SF + 35% = 3,375 s.f.**

**OPTION 2**

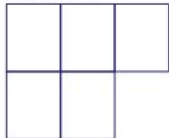
# OTHER DEPARTMENT NEEDS

# New Construction Option - Programming

# OTHER STORAGE

OTHER

MAINTENANCE



CONFERENCE



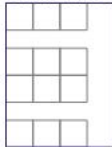
MAINTENANCE GARAGE / SHOP



TECHNOLOGY



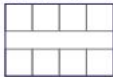
TECH OPEN OFFICE



DATA CENTER



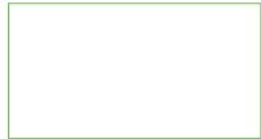
SPECIAL EDUCATION



future Police Chief



RECORDS



GENERAL STORAGE



AREA: 5,075 SF + 35% = 6,200 s.f.

AREA: 3,360 SF

OTHER AREA TOTAL = 9,560 s.f.



# New Construction Option - Cost Assumption

## New Construction

34,540 s.f                      New Construction Costs \$400 S.F. = \$13,816,000

Generator Cost                \$1,000,000 - *Maintains Electric for Entire Building*

Site Development             \$1,381,600

Project Contingency        \$1,381,600

\$17,579,200

Construction Costs

\$2,636,880

Assume 15% for Soft Costs & FF&E

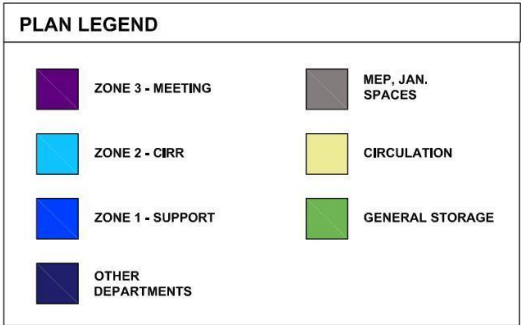
**\$20,216,080\***

*\*No site acquisition*

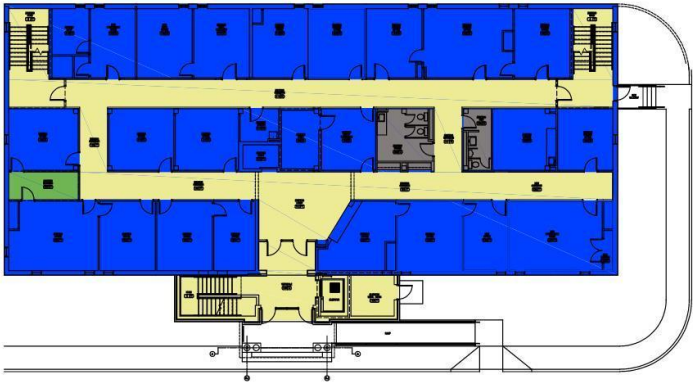
# Renovation Option



# Renovation Option - Existing Plan



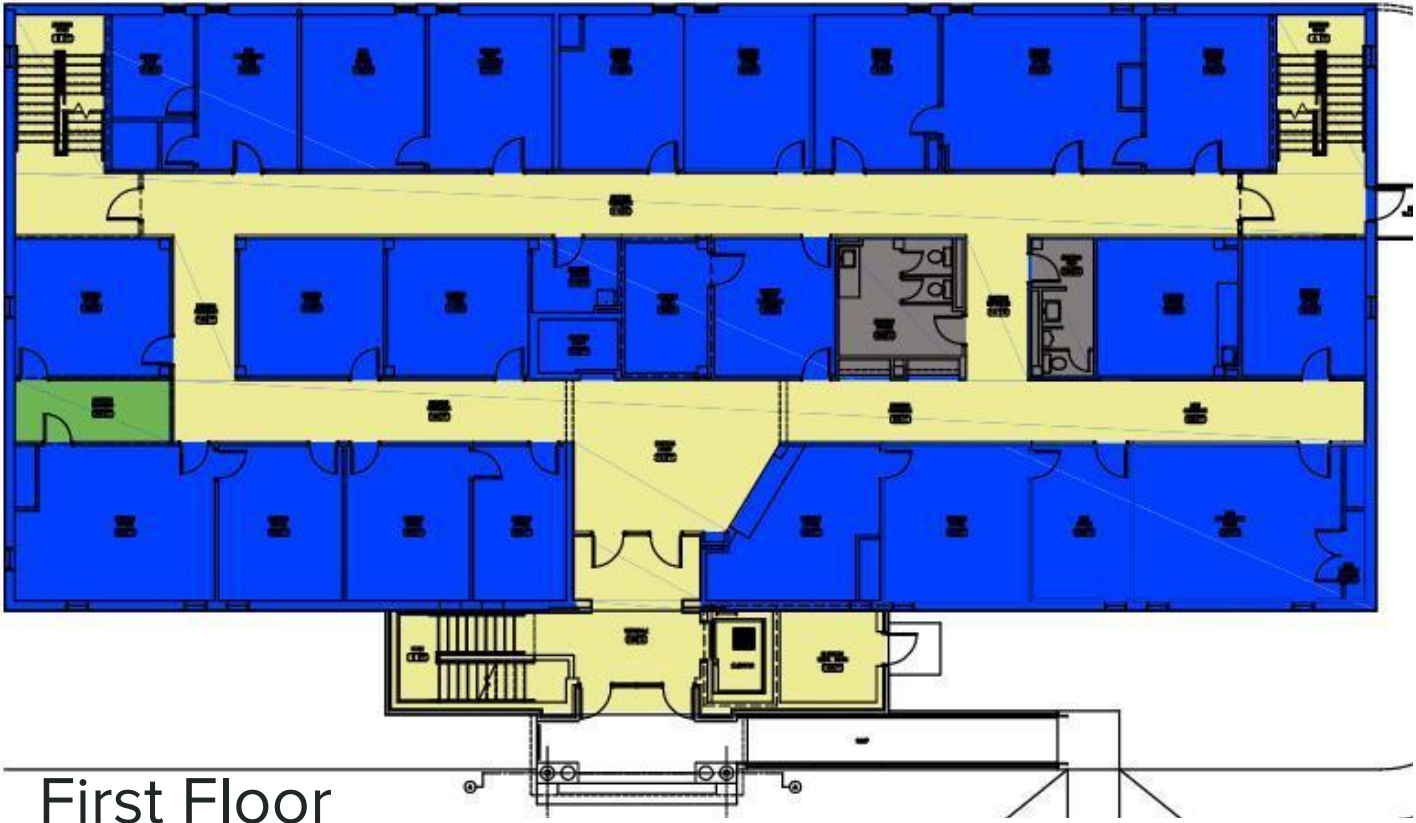
**FIRST FLOOR**



**BASEMENT**



# Renovation Option - Increase Program Space



**Zone 1  
Support**

Available  
Space  
5,150 s.f.

Needed  
6,820 s.f.

**Short 1,670 s.f.**

# Renovation Option - Increase Program Space



Second Floor

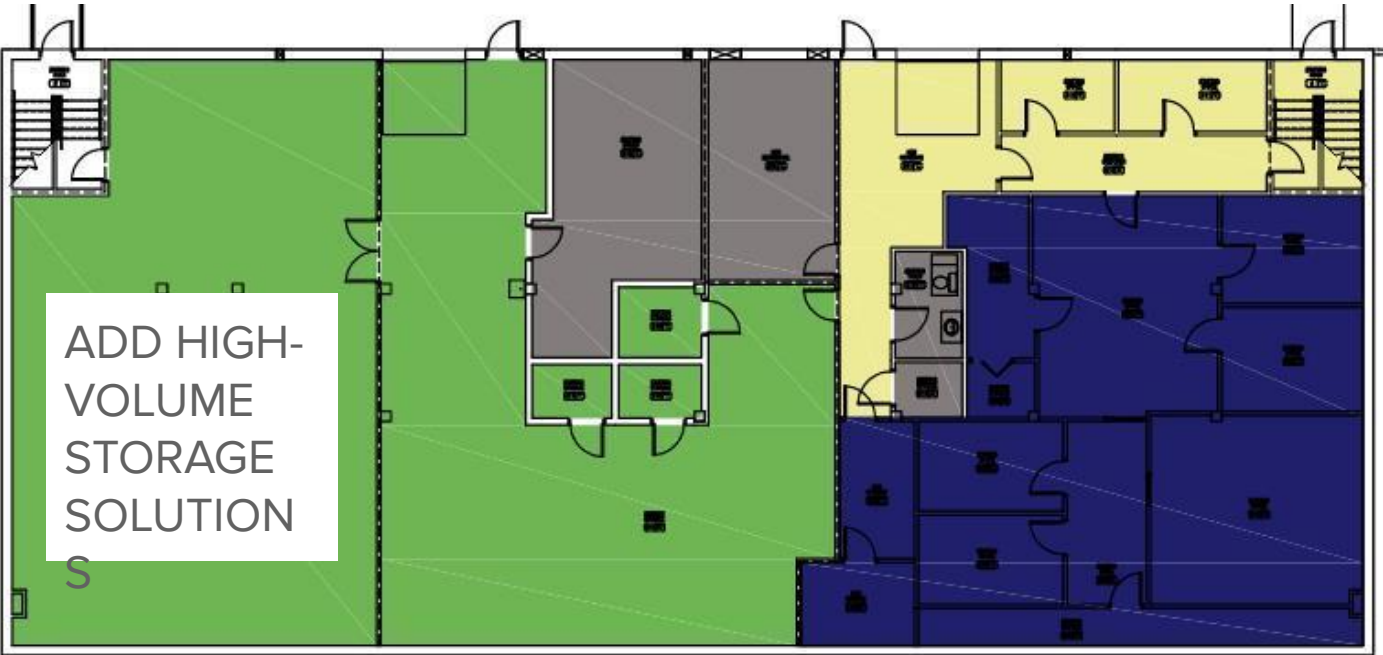
## Zone 2 Curriculum

Available Space  
5,875 s.f.

Needed  
6,690 s.f.

Short 815 s.f.

# Renovation Option - Increase Program Space



**Other**  
**4,970 s.f.**

Available Space  
2,150 s.f.

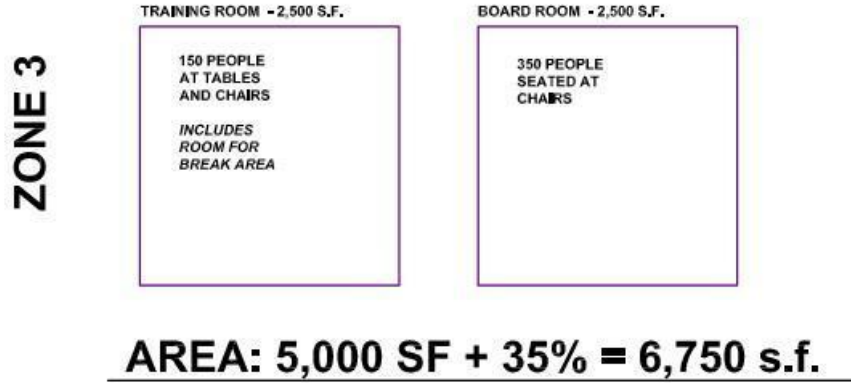
Needed  
5,075 s.f.

Short 2,925 s.f.

Basement

# Renovation Option - Increase Program Space

## Addition



## Programming Goal Space Needs:

**5,410 s.f.**

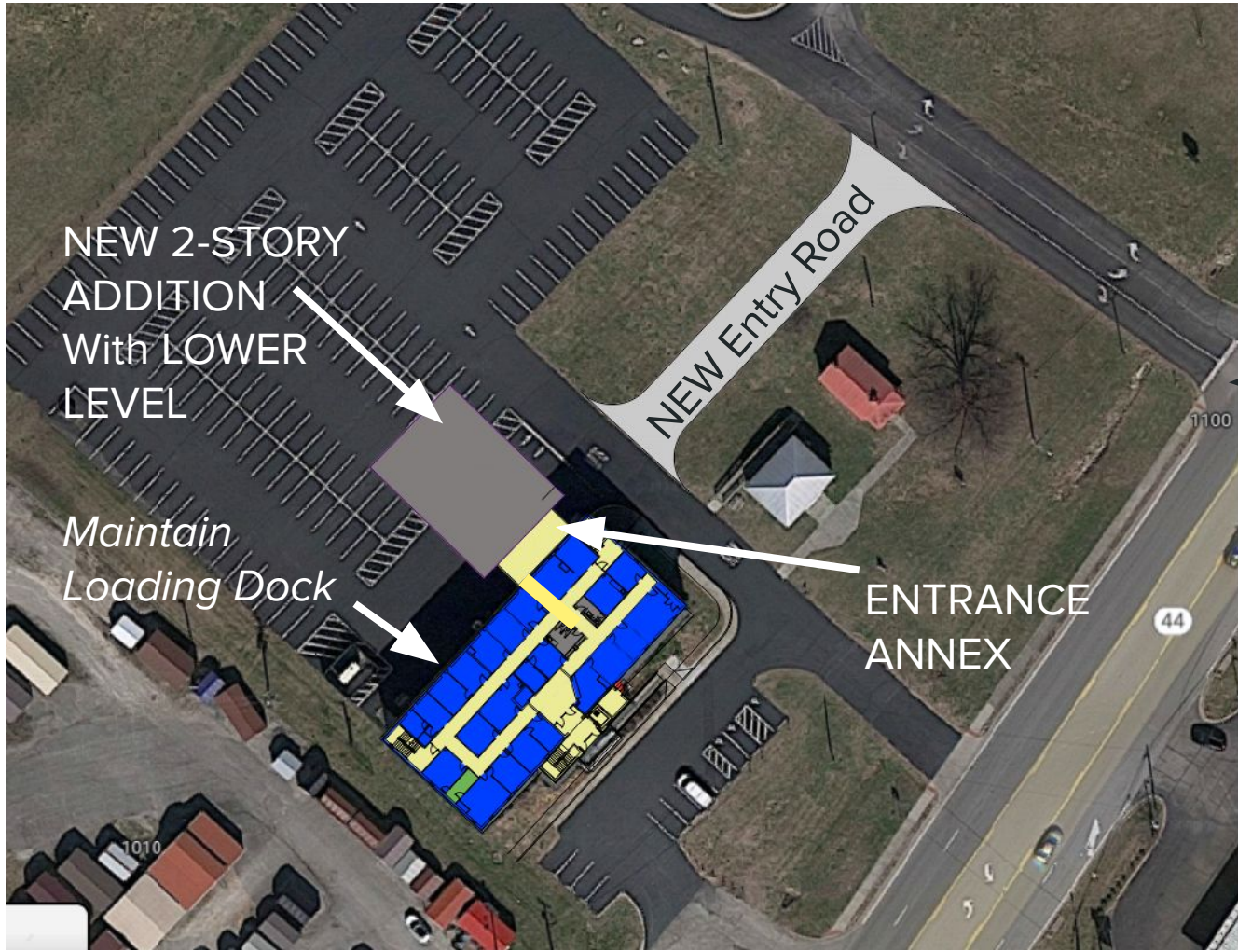
**+**

**Zone 3**

**6,750 s.f.**

**= 12,160 s.f. Addition**

# Renovation Option - Site Plan



NEW 2-STORY  
ADDITION  
With LOWER  
LEVEL

Maintain  
Loading Dock

ENTRANCE  
ANNEX

Future Stop  
Light

NEW Entry Road

1100

44

1010



# Renovation + Addition Option - Cost Assumption

## Existing Building

1st Floor	8,250 s.f.	Renovation Costs	\$100 per S.F.
2nd Floor	8,250 s.f.	Renovation Costs	\$100 per S.F.
<u>Basement</u>	<u>7,785 s.f. (2,880 s.f.)</u>	<u>Renovation Costs</u>	<u>\$100 per S.F.</u>
<b>Total Exst.</b>	<b>24,285 s.f.</b>	<b>\$2,428,500 to Renovate</b>	

## New Construction

Annex & Main Entrance	12,160 s.f.	New Construction Costs	\$400 S.F.
		\$4,864,000 Addition Cost	

Total Assumed Cost for Renovation Option **\$7,292,500.00**

# Renovation + Addition Option - Cost Assumption (*continued*)

## New Construction

Renovation	\$2,428,500	8,292,500
New Construction	\$4,864,000	
Generator Cost	\$500,000	<i>Upgrade to support new addition</i>
Site Development	\$500,000	<i>(New Sidewalks, Parking Reconfiguration)</i>
<u>Project Contingency</u>	<u>\$830,000</u>	
	\$9,122,500	Construction Costs
	<u>\$1,386,375</u>	<u>Assume 15% for Soft Costs &amp; FF&amp;E</u>
	<b>\$10,490,875</b>	<b>Total for Renovation and Addition</b>

## SUMMARY

### New Construction Assumed Project Cost

**\$20,216,080 for 34,540 s.f. Building**

### Renovation & Addition Assumed Project Cost

**\$10,490,875 for Renovation and 12,160 s.f. Addition**

# Graduation Ceremonies

Class of 2024





# OUR GOALS.

*Let's celebrate.*

Graduation is a time for celebration - and rightfully so! This event symbolizes the end of a long, fulfilling educational career. As such, we want this experience to be a cause for festivity, not headache.

## **WE WANT**

our graduation ceremony to be open to our students and their families and friends.

## **WE DO NOT WANT**

to place strict limits on how many guests can be invited per student.

## PREVIOUS LOCATIONS.

Due to other events in Louisville the weekend our students will be graduating (specifically, the PGA Tour) venues we have used in the past will not be available to us.

## IN-DISTRICT VENUES.

There are no indoor venues within our district that could accommodate our graduating class without having to limit attendance - and that's simply not something we will consider. We want everyone to be able to participate in the celebration!



2 0 2 4 ' S

U N I Q U E

CHALLENGES



**Bullitt East High School**



# OUR OPTIONS.

## *option 1.*

### **OUTDOOR GRADUATIONS**

We would host graduation here, on campus, in our newly constructed football stadium. Graduates would be in chairs on the turf while family and friends would be seated in the bleachers.

This means that graduation could be on the evening of Friday, May 17th; anytime on Saturday, May 18th; or the afternoon/evening of Sunday, May 19th.

## *option 2.*

### **INDOOR GRADUATIONS**

Graduation would be held at Broadbent Arena in Louisville, as it has been in years past.

This means that graduation could take place on Tuesday, 5/21; Wednesday, 5/22; or Thursday, 5/23. We would make every effort to schedule our graduation ceremony for after work hours on one of these days. However, depending on Broadbent's availability, graduation may have to take place during the day.

**WE  
NEED  
YOUR  
INPUT.**

*Let's hear from you.*





# Parent/Community Feedback Questions

**Rank statement on the level of importance from 1–5 (with 5 being the MOST important) without giving the same ranking to any 2 statements:**

1. The most important thing is not limiting the number of guests per student.
2. The most important thing is graduating on the weekend.
3. The most important thing is having an indoor venue.
4. The most important thing is setting an evening graduation time.

**Given the information you have learned, please let us know your overall preference below.**

- Weekend, Outdoor Graduation on Campus
- Weekday, Indoor Graduation at Broadbent Arena

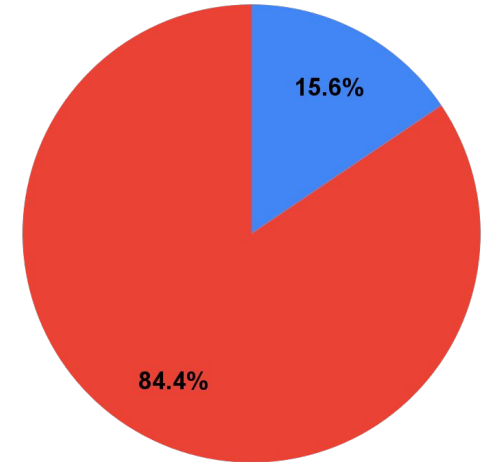
# Bullitt Central High School (45 Responses)

## Priority of Responses

1. The most important thing is not limiting the number of guests per student. (4.2)
2. The most important thing is graduating on the weekend. (3.6)
3. The most important thing is setting an evening graduation time. (3.3)
4. The most important thing is having an indoor venue. (2.0)

## Top Preference Responses

- Weekday, Indoor Graduation at Broadbent Arena
- Weekend, Outdoor Graduation on Campus



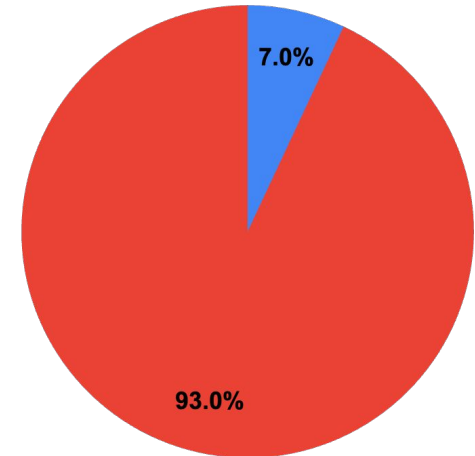
# North Bullitt High School (43 Responses)

## Priority of Responses

1. The most important thing is not limiting the number of guests per student. (4.5)
2. The most important thing is graduating on the weekend. (4.4)
3. The most important thing is setting an evening graduation time. (3.4)
4. The most important thing is having an indoor venue. (2.0)

## Top Preference Responses

- Weekday, Indoor Graduation at Broadbent Arena
- Weekend, Outdoor Graduation on Campus



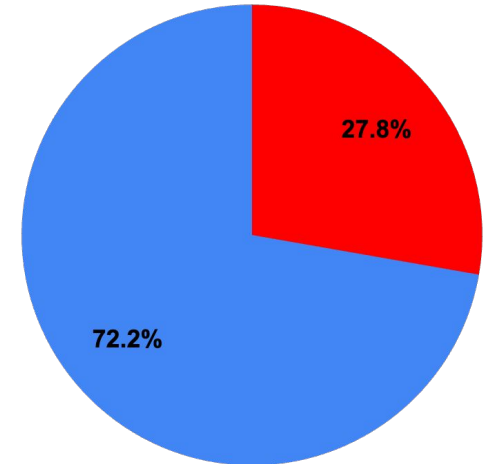
# Bullitt East High School (209 Responses)

## Priority of Responses

1. The most important thing is not limiting the number of guests per student. (4.0)
2. The most important thing is having an indoor venue. (3.8)
3. The most important thing is setting an evening graduation time. (2.9)
4. The most important thing is graduating on the weekend. (2.8)

## Top Preference Responses

- Weekend, Outdoor Graduation on Campus
- Weekday, Indoor Graduation at Broadbent Arena



# Recommendations: *To be Presented May 18th for Approval*

## Bullitt Central High School:

- Friday, May 17th, 7:00 PM @ BCBS Stadium  
*Weather Back-up: Saturday, May 18th (12:00 & 6:00) & Sunday, May 19th (2:00 PM)*

## North Bullitt High School:

- Saturday, May 18th, 7:00 PM @ NBHS Stadium  
*Weather Back-up: Sunday, May 19th (7:00 PM) & Monday, May 20th (7:00 PM)*

## Bullitt East High School:

- Tuesday, May 21st, 7:00 PM @ Broadbent Arena