

# OCS CONSTRUCTION REPORT

February 2024

## Presentation

### 1. District Wide Landscaping and Site Improvements

- Site assessment presented tonight. See attached Exhibit A.

### 2. OCHS Foundation Repairs & Roof Project Ph. 3 (Remaining Bldg. 1 – Roof Replacement Gym and Auditorium)

Installation of exterior lighting and cameras continues.



### 3. SOHS Phase II – Fieldhouse Renovation & Site Improvements

Closeout in progress

BG-1 Project Reconciliation      March 2024

### 4. SOHS Major Renovation Phase 3 – Fire Alarm Upgrades

Punchlist work is in progress.

### 5. East Oldham M.S. Classroom Addition and Roof Replacement

Closeout in progress

BG-1 Project Reconciliation      March 2024

### 6. OCHS & Buckner ES Emergency Boiler Replacement

- Closeout in process.

### 7. NOHS Soffit, Roof, and Metalwork Repairs

Soffit demolition complete

Foam Insulation and Soffit installation In progress

Substantial Completion April 2024

**8. Athletic Stadium and Field Improvements at Various Schools Bid Package A (SOHS Field Lighting), Bid Package B (SOHS Concession Stand / SOHS & OCHS Stadium Upgrades), and Bid Package C (Turf Replacement OCHS & NOHS)**

**SOHS Field Lighting (Bid Package A):**

Closeout in process.

BG-4

March 2024

**SOHS Concession Stand / SOHS & OCHS Stadium Upgrades:**

**SOHS Concession Stand & Ticket Booth & Track Improvements / OCHS Ticket Booth & Track Improvements (Bid Package B):**

**Visitor nearing completion**

**OCHS Ticket Booth:**

Exterior lettering to be installed upon arrival.

Contractor corrections to the track to be made around Spring sports season

**SOHS Concession Stand:**

Electrical rough-in complete.

Completed Roof curb set, duct rough-in complete, canopies nearing completion.

Drywall ceilings complete, painting underway.

Visitor Bleachers install in progress.

Expected completion June 2024



**SOHS Scoreboard:**

- Installation complete
- Electrical work complete
- Fiber optics install in progress
- Training Complete



**SOHS Ticket Booth:**

Exterior lettering to be installed upon arrival.

**Turf Replacement at NOHS & OCHS (Bid Package C)**

Closeout in progress.

**9. Athletic Improvements at Various High Schools PH 2**

- Schematic Design in progress.

**10. OC Preschool – Expansion and Roof Replacement**

**Tentative Schedule**

CDs	March 2024
Bids/Contracts	April 2024
Construction starts on addition	May 2024
Interior Renovation Substantial Completion	August 2024
Final Substantial Completion	April 2025

**11. Buckner Mechanical Room Upgrades**

Closeout in progress.

**12. OCHS HVAC Upgrades**

Closeout in progress.

**13. Kenwood Elementary School Roof Replacement**

- Bid contract documents presented tonight by supplement.

#### 14. Career Tech Renovation at OCMS

- Demo is ongoing
- Installation of the load bearing CMU walls near completion
- Electrical conduit rough in started
- Rough in Plumbing started.



#### 15. Career Tech Addition at SOMS

- Interior CMU and wall framing underway
- Site Utility work ongoing



#### 16. Site Accessibility at Various Elementary Schools Phase II

- Design Development in Progress

#### 17. SOHS Shop Renovation

##### Welding Shop

Punch items complete. Shop has been occupied for its intended use this school year.

#### 18. South Oldham High School Renovation / Addition PH 3

- Proposed programming submitted for approval tonight.
- Master Plan/Schematic design to follow.

## 19. Field #2 Renovations at OCHS & NOHS

### OLDHAM COUNTY HIGH SCHOOL FIELD #2

- Grass turf removed
- Field has been cut to subgrade



### NORTH OLDHAM HIGH SCHOOL FIELD #2

- Mobilization started
- Substantial Completion August 2024



## 20. Former Liberty Asbestos Abatement & Demolition

- Construction document approval presented tonight.
- With approval:
  - Bid announce 2/22/24
  - Pre-Bid 3/4/24
  - Bid Date 3/14/24
  - Demolition 4/12/24

## **21. Central Office Interior Renovations & Site Improvements**

- Project on hold until further notice.

## **22. BAHS and Oldham County High School Improvements.**

- Schematic design submitted tonight for approval.

## **23. New Oldham County Art Center**

- Feasibility Study continues.

## **MINOR PROJECT OVERVIEW**

Interior Renovations or Non-Bonded / "Cash" projects. Schedules are anticipated and subject to major project scheduling priority, school holidays and available resources.

## **24. Flooring Replacement at Various Schools**

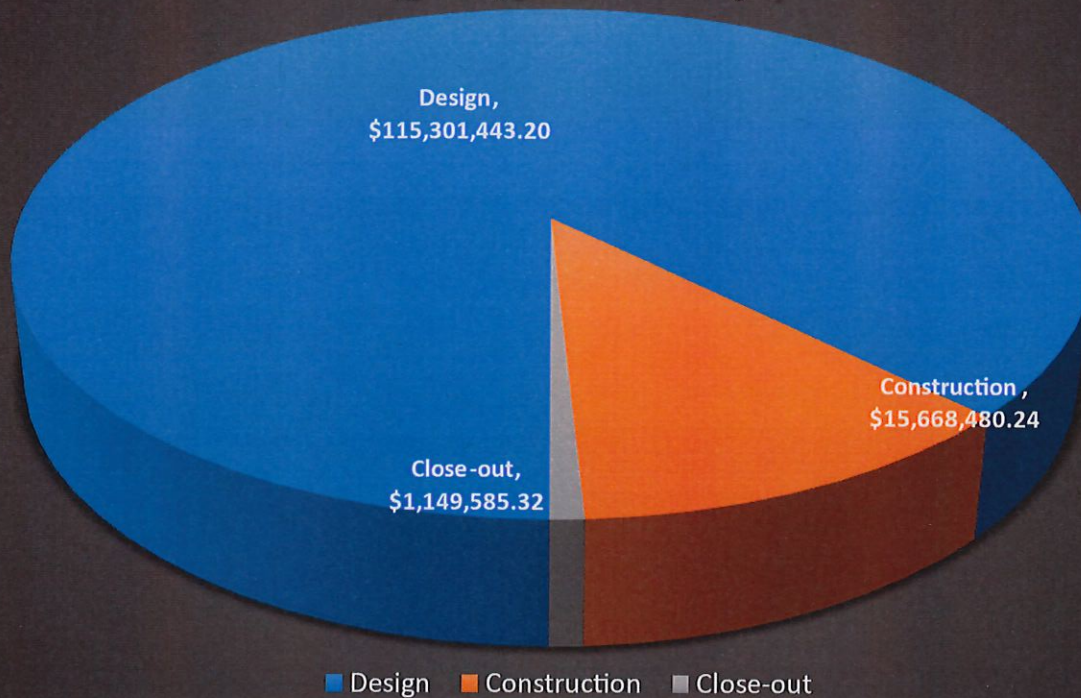
- OCHS Auditorium flooring has been replaced. Trim work continues.
- (1) Classroom at Buckner Elementary School (Sprinkler damage) – materials are on order.

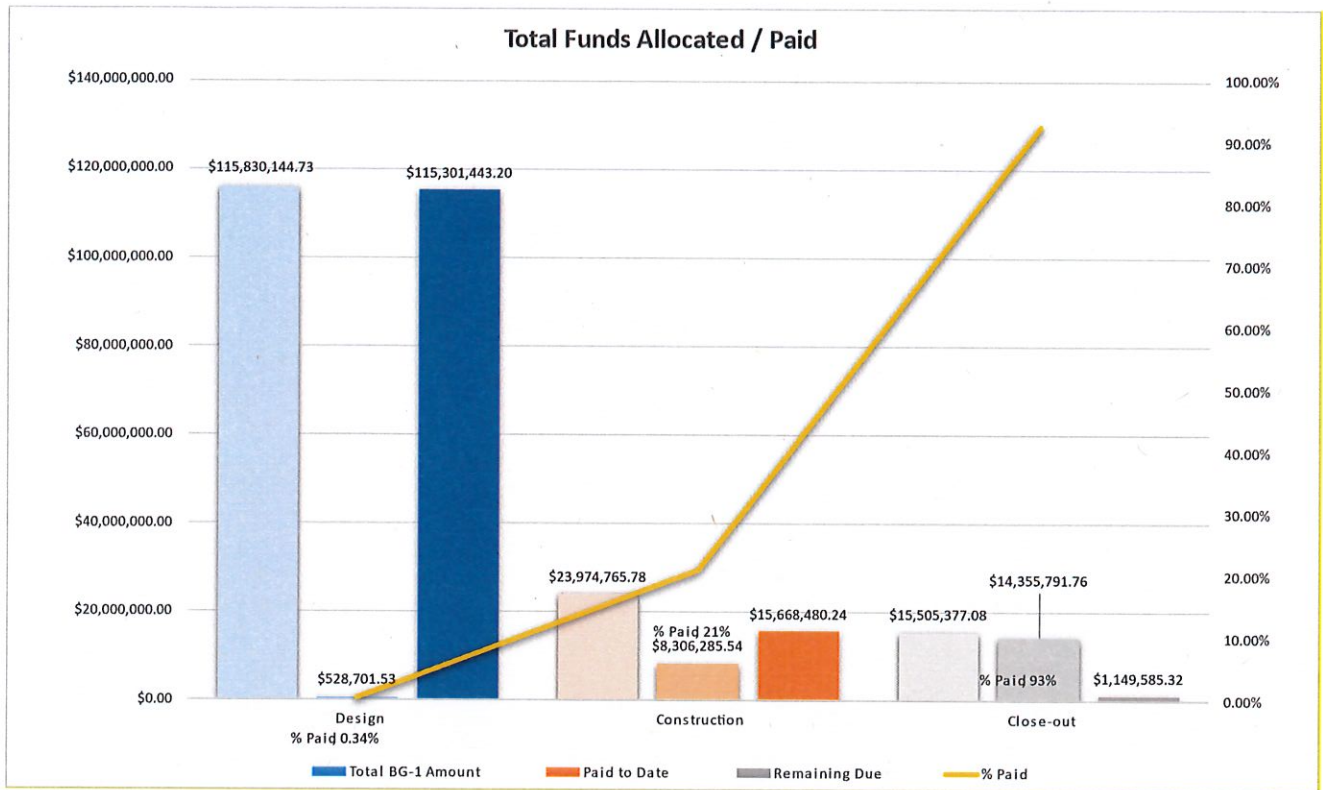
## **25. Auditorium Lighting & Sound Improvements @ NOHS & OCHS**

- Kickoff meeting February 16, 2024
- Pre-design, existing conditions and field verification underway.

Project	Total BG-1 Amount	Paid to Date	Remaining Due	% Paid	Phase
OCHS Roof Rep & Foundation Repairs Phase 1 & 2	\$3,213,927.00	\$3,480,642.20	-\$266,715.20	108.3%	Close-out
OCHS Roof Rep & Foundation Repairs Phase 3	\$1,853,216.80	\$1,095,300.00	\$757,916.80	59%	Construction
EOMS Add. & Roof Rep.	\$5,105,600.00	\$5,196,338.86	-\$90,738.86	102%	Close-out
OC Preschool Expansion	\$11,818,620.00	\$98,223.48	\$11,720,396.52	1%	Design
SOHS Fire Alarm Systems Replacement Ph 3	\$150,179.24	\$131,931.34	\$18,247.90	88%	Close-out
OCHS Partial HVAC Upgrades	\$1,086,500.00	\$984,317.89	\$102,182.11	91%	Close-out
Annex Safety & Security	\$242,187.20	\$193,503.00	\$48,684.20	80%	Close-out
Former Liberty Demolition	\$929,883.75	\$78,430.94	\$851,452.81	8%	Design
Site Access/Various Elementary Schools	\$1,618,604.00	\$1,198,376.17	\$420,227.83	74%	Close-out
Athletic Stadium Improvements BP A & C	\$3,647,866.49	\$2,836,274.41	\$811,592.08	78%	Close-out
Athletic Stadium Improvements BP B & D	\$10,108,618.13	\$4,853,159.72	\$5,255,458.41	48%	Construction
Safety & Security Various High Schools	\$99,860.15	\$148,112.89	-\$48,252.74	148%	Close-out
Flooring Replacement @ Various Schools	\$136,250.00	\$176,795.00	-\$40,545.00	130%	Close-out
OCHS/NOHS Soccer Field Improvements	\$7,169,224.00	\$312,154.68	\$6,857,069.32	4%	Construction
Buckner Mechanical Upgrades	\$413,480.33	\$333,207.70	\$80,272.63	81%	Construction
Central Office Interior Ren. & Site Imp.	\$3,560,968.30	\$168,239.43	\$3,392,728.87	5%	Design
NOHS Metalwork (Soffit Repairs)	\$478,285.42	\$357,808.18	\$120,477.24	75%	Construction
OCMS/SOMS Career Tech Reno/Add (BP 1- & 2)	\$2,649,746.00	\$217,594.89	\$2,595,695.20	8%	Construction
SOHS Shop Renovation	\$1,302,195.10	\$1,137,060.37	\$165,134.73	87%	Construction
District Wide Landscaping & Site Imp.	\$19,513,812.50	\$24,596.89	\$19,489,215.61	0%	Design
Multi-functional Health & Safety Sensors in Middle Schools	\$100,800.00	\$0.00	\$100,800.00	0%	Close-out
BAHS & OCHS Improvements	\$19,519,250.00	\$15,560.00	\$19,503,690.00	0%	Design
Auditorium Lighting Upgrades (OCHS)	\$103,603.00	\$9,500.00	\$94,103.00	9%	Close-out
SOHS Renovation and Addition, Field 3	\$54,308,002.68	\$18,825.41	\$54,289,177.27	0%	Design
Kenwood ES Roof Replacement	\$2,354,707.50	\$48,014.05	\$2,306,693.45	2%	Design
Site/Access Improvements Various ES PH 2	\$497,900.00	\$5,256.29	\$492,643.71	1%	Design
Stadium & Field Improvements Various Locations PH 2	\$3,327,000.00	\$71,555.04	\$3,255,444.96	2%	Design

## Remaining Project Costs by Phase





-End of Report





# Districtwide Site Improvements Project





# District Wide Site Improvement Project

District  
Development Plan  
+ Design Standards

Implementation  
Project

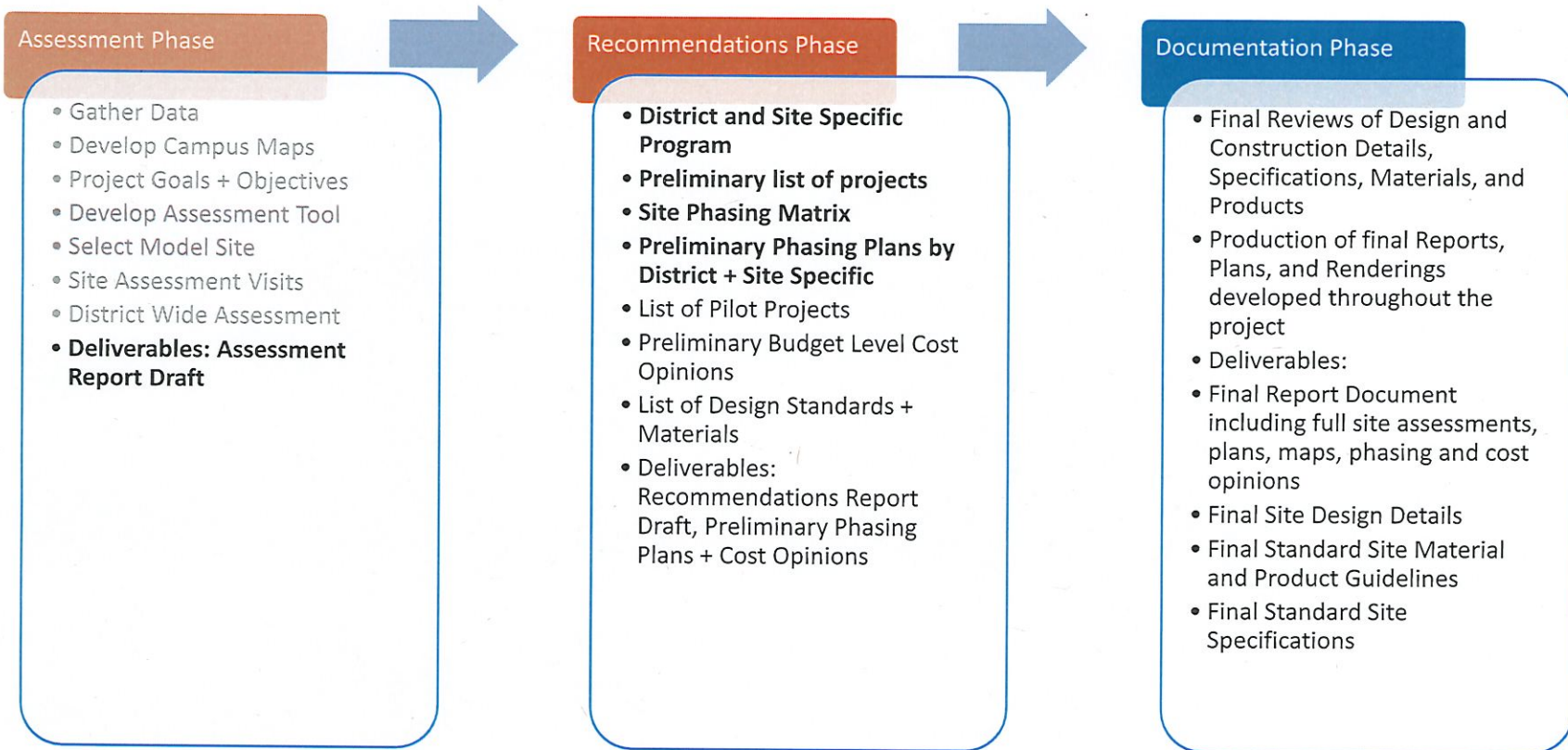
Assessment

Recommendations

Documentation

3-4 Construction  
Projects

# DISTRICT DEVELOPMENT PLAN + DESIGN STANDARDS



# ASSESSMENT PHASE PROGRESS UPDATE: REPORT DRAFT



REPORT DRAFT - UPDATE XX.XX.XX

## DISTRICTWIDE SITE IMPROVEMENTS



Preliminary Report Draft

XX  
[www.example.com](http://www.example.com)



## INDEX

### PROJECT OVERVIEW

District Overview + Project Scope	01
Project Goals + Objectives	02
Planning Process	03

### MODEL SITE DESIGN

Design Standards, Specifications + Materials	12
Implementation Phasing	14
	16

### ASSESSMENT PHASE

Assessment Tools	04
Findings	05
Campus Inventory + Analysis	06

### REFERENCES

Sources	20
---------	----

### RECOMMENDATIONS PHASE

List of Projects + Site Phasing Matrix	07
Recommendations Report	08
Cost Options	09

# PROJECT OVERVIEW

# 01

## PROJECT TEAM

### CLIENT

**OLDHAM COUNTY SCHOOLS**  
Dr. Jason Radford, Superintendent

**District Facilities Team**  
Brent Bohannon, AIA, Director of Facilities  
Denise Schindler, Project Manager

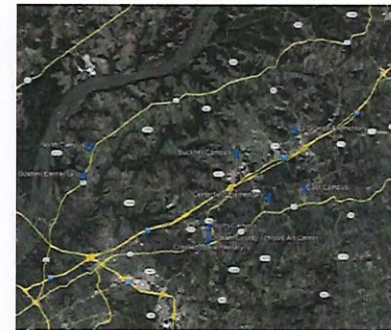
**Board of Education**  
Suzanne Hundley, Chairperson  
Larry Dodson, Vice-Chairperson  
Allison Sheffer  
Joe Dennis  
Carly Clem

### CONSULTANT

**ELEMENT DESIGN**  
Project Management  
Landscape Architecture  
Civil Engineering

## DISTRICT OVERVIEW + PROJECT SCOPE

The Districtwide Site Improvements Project spans a multi-phase process from assessment through implementation of projects. Beginning with a review of existing site conditions at all district campuses, the project culminates with a framework for elevating Oldham County Schools through improvements to the outdoor Campus environment.



## GOALS

### SUPPORT DISTRICT VISION & MISSION:

Support the District's Vision & Mission that "All Clatsop County students supported by family, community, and schools participate in relevant, engaging, quality learning tasks, in **safe, well designed schools**...". Districtwide site improvements should contribute by providing well designed campuses that offer opportunities to engage students.

### ELEVATE DISTRICT CHARACTER & COMMUNITY:

Build a cohesive and identifiable campus character and aesthetic that immediately projects a sense of pride of place that elevates the district as a whole and supports each individual campus community.

### BUILD A CONSISTENT CAMPUS IMAGE:

Develop a specific style and physical image that is identifiable and consistent across all district campuses through the use of design standards and opportunities for district branding with a framework for future site development.

## OBJECTIVES

### REVIEW & ASSESS ALL DISTRICT CAMPUSES

Gather information and evaluate all sites district-wide to gain a holistic understanding of existing conditions and site development needs.

### IDENTIFY AREAS OF IMPROVEMENT

Using information learned through the assessment process, identify general areas for improvement of the district, campus, and school level. Develop prioritization and phasing of projects for budgeting and implementation.

### DEVELOPMENT OF DESIGN STANDARDS

Establish a standard catalog of site design details and specifications to be used throughout the district on future construction and site improvement projects. Develop pilot projects to test and refine standards.

## PLANNING PROCESS



### ASSESSMENT PHASE

The goal of the Assessment Phase is to gather information and evaluate all sites district-wide. By the end of the phase, the team should have a holistic understanding of the district's site development needs and goals.

### RECOMMENDATIONS PHASE

The goal of the Recommendations Phase is to process the assessment information and develop preliminary proposals for implementation of district-wide site improvements and design standards. By the end of the phase, the team has a refined set of plans and recommendations to use as a guideline in finalizing all documentation.

### IMPLEMENTATION PROJECTS

The goal of the Implementation Phase is to refine preliminary implementation and design standards, and test those through Pilot Projects. By the end of the phase, the team will have a set of standard design details and specifications to use as a model for finalizing all standards.



## ASSESSMENT PHASE

The goal of the Assessment Phase is to gather information and evaluate all sites district-wide. By the end of the phase, the team should have a holistic understanding of the district's site development needs and goals.

# 02





### BUCKNER CAMPUS



#### KEY FINDINGS

Sandam volendibus soluptas audandam volentis vendita eus, tet officabo. Aemilite nus quamusandam nus, sequa aut ma doletesequo debet incipiam quas ra voluplat parumendi omninila que doles repedit ut eaquoae consequt tem aci tet

#### OPPORTUNITIES

Qbasi officit, omnimore espit minumenti assequae por molareni la quas arant, unt fugitas inolendae optar nonesequide plam, odis ulorio est, incipiam qui sam et que in tumet, od estolatuae nobilis nonsecepuda nime vene sitae



#### OLDHAM COUNTY MIDDLE SCHOOL

Iducietur as modiat lonsequi volupta quodas aspit harcis doloribus dignitiae. Rerita que perunt prem quo et adion porum nos aborumiq uatquas rereuunt enihitio diletum eila cus dis apertis aut et pois magnallias volorem quoes eaquoae mod maio. Et



#### BUCKNER ELEMENTARY SCHOOL

Iducietur as modiat lonsequi volupta quodas aspit harcis doloribus dignitiae. Rerita que perunt prem quo et adion porum nos aborumiq uatquas rereuunt enihitio diletum eila cus dis apertis aut et pois magnallias volorem quoes eaquoae mod maio. Et



#### OLDHAM COUNTY HIGH SCHOOL

Iducietur as modiat lonsequi volupta quodas aspit harcis doloribus dignitiae. Rerita que perunt prem quo et adion porum nos aborumiq uatquas rereuunt enihitio diletum eila cus dis apertis aut et pois magnallias volorem quoes eaquoae mod maio. Et





# ASSESSMENT PHASE: PROCESS OVERVIEW

Project: Oldham County Schools Districtwide  
Site: Buckner Campus

Oldham County Middle School

Circulation	0 1 2 3 4				Weight	Weighted Total	Row Total	Notes
	Poor	Fair	Good	Excellent				
<b>Car Rider</b>								
Adequate spacing / crossing line								
Meets ADA								no signs, mostly no signs
Signage from bus								
clearly marked								
adequate route to entrance								
Subtotal								
<b>Bus Rider</b>								
Adequate spacing / crossing line								
Meets ADA								to top of Midway bus
Signage from bus								visibility
clearly marked								width of entrance?
adequate route to entrance								
Subtotal								
<b>Walk</b>								
Adequate spacing / crossing line								
Meets ADA								
Signage from bus								
clearly marked								
adequate route to entrance								
Subtotal								
<b>Stair</b>								
Adequate spacing / crossing line								
Meets ADA								
Signage from bus								
clearly marked								
adequate route to entrance								
Subtotal								
<b>Other</b>								
Adequate spacing / crossing line								
Meets ADA								
Signage from bus								
clearly marked								
adequate route to entrance								
Subtotal								
<b>Calculation Total Score</b>								
<b>Parking</b>								
<b>Visitors</b>								
clearly marked								
impact								
to parking route to entrance								
visibility from the office								
adequate number								
adequate condition								
Subtotal								
<b>Signage</b>								
clearly marked								
adequate number								
Subtotal								
<b>Stair</b>								
clearly marked								
adequate route to entrance								
Subtotal								

**ONSITE FIELD REPORTS**

- INITIAL SCORES
- NOTES



Project: Oldham County Schools Districtwide  
Site: Buckner Campus

Oldham County Middle School

Circulation	0 1 2 3 4				Weight	Weighted Total	Row Total	Notes
	Poor	Fair	Good	Excellent				
<b>Car Rider</b>								
Adequate spacing / crossing line								
Meets ADA								need to get from site visit, survey
Signage from bus								no signs, no signage
clearly marked								no signs, no signage
adequate route to entrance								
Subtotal							14	
<b>Bus Rider</b>								
Adequate spacing / crossing line								need to get from site visit, survey
Meets ADA								no signage
Signage from bus								lack of sign, no sign, no sign
clearly marked								
adequate route to entrance								
Subtotal							17	
<b>Walk</b>								
Adequate spacing / crossing line								
Meets ADA								
Signage from bus								
clearly marked								
adequate route to entrance								
Subtotal							10	
<b>Other</b>								
Adequate spacing / crossing line								
Meets ADA								
Signage from bus								
clearly marked								
adequate route to entrance								
Subtotal							0	from the school property boundary
<b>Calculation Total Score</b>								
<b>Parking</b>								
<b>Visitors</b>								
clearly marked								
impact								
to parking route to entrance								
visibility from the office								
adequate number								
adequate condition								
Subtotal							0	
<b>Signage</b>								
clearly marked								
adequate route to entrance								
Subtotal							0	

**DATA INPUT**

- INPUT SCORES INTO SPREADSHEETS
- REVIEWED ISSUES AND QUESTIONS
- PRELIMINARY ANALYSIS OF FINDINGS



Oldham County Middle School

Existing Conditions Assessment Score Card

Project: Oldham County Schools Districtwide  
Site: Buckner Campus

Categories	0 1 2 3 4				Subtotal	Possible	Average Score	Notes
	Poor	Fair	Good	Excellent				
<b>Circulation</b>								
Car Rider								
Bus Rider								
Staff Circulation								
Walkers								
Subtotal					8.43	20	42%	
<b>Parking</b>								
Visitors								
Staff								
ADA's								
Event								
Bus					11.00	20	55%	
<b>Service</b>								
Concessions								
Waste								
<b>Recreation</b>								
Sports & Active Recreation Area								
Outdoor gathering space								
<b>General Landscape / Site</b>								
Lighting								
Site Powerlines								
Signage / Trees								
Fences								
Storm drainage								
Security								
<b>Wayfinding / Signage</b>								
School Entrance								
Identification								
Campus Wayfinding								
School Wayfinding								
Regulatory								

**ASSESSMENT FINDINGS**

- REVIEW PRELIM ANALYSIS
- DEVELOP CAMPUS AND DISTRICT WIDE ASSESSMENTS
- SUMMARIZE DISTRICTWIDE FINDINGS



# ASSESSMENT PHASE: PARKING REVIEW

	Visitor	ADA	Required ADA	Staff	Other	Total	Number of Students	Visitor % of Student #	Visitor % of Parking	Total Parking / Student #	Staff % of Student #	Goal Visitor / Student #	Goal Parking / Student
<b>Elementary</b>												<b>1.5% goal</b>	<b>18%</b>
<i>Buckner ES</i>	0	2	4 (1 van)	8	74	84	772	0%	0%	11%	1%	12	139
<i>Centerfield</i>	0	6	5 (1 van)	0	127	133	600	0%	0%	22%	0%	9	120
<i>LaGrange ES</i>	2	4	4 (1 van)	0	86	92	394	1%	2%	23%	0%	6	79
<i>Harmony ES</i>	0	4	5 (1 van)	0	107	111	647	0%	0%	17%	0%	10	129
<i>Goshen ES</i>	5	6	5 (1 van)	0	96	107	725	1%	5%	15%	0%	11	145
<i>Camden Station ES</i>	0	5	4 (1 van)	0	84	89	550	0%	0%	16%	0%	8	110
<i>Kenwood ES</i>	9	6	5 (1 van)	0	116	131	700	1%	7%	19%	0%	11	140
<i>Crestwood ES</i>	4	10	7 (2 van)	58	206	278	725	1%	1%	38%	8%	11	145
<i>Locust Grove EM</i>	9	5	5 (1 van)		120	134	750	1%	7%	18%	0%	11	150
<b>Average</b>	<b>3</b>								<b>Average</b>	<b>18%</b>			
<b>Middle</b>												<b>1% goal</b>	<b>15%</b>
<i>NOMS</i>	6	2	4 (1 van)	0	92	100	833	1%	6%	12%	0%	8	125
<i>OMS</i>	10	2	4 (1 van)	0	74	86	784	1%	12%	11%	0%	8	110
<i>SOMS</i>	0	4	5 (1 van)	0	116	120	756	0%	0%	16%	0%	8	106
<i>EOMS</i>	4	6	5 (1 van)	0	132	142	667	1%	3%	21%	0%	7	93
<b>Average</b>	<b>5</b>								<b>Average</b>	<b>15%</b>			
<b>High</b>												<b>1% goal</b>	<b>45%</b>
<i>NOHS</i>	13	6	2% or 11 (2 van)	0	529	564	1267	1%	2%	45%	0%	13	570
<i>OCHS</i>	39	8	2% or 12 (2 van)	0	546	593	1495	3%	7%	40%	0%	15	673
<i>SOHS</i>	15	24	9 (2 van)	26	379	444	1019	1%	3%	44%	3%	10	459
<b>Average</b>	<b>22</b>								<b>Average</b>	<b>43%</b>			



# ASSESSMENT PHASE: PRELIMINARY FINDINGS BY SCHOOL LEVEL

District Overview											
Elementary Schools	Buckner E.S. / OCPS	Centerfield E.S.	Crestwood E.S.	Locust Grove E.S.	LaGrange E.S.	Goshen E.S.	Harmony E.S.	Camden Station E.S.	Kenwood Station E.S.		
<b>Assessment Categories</b>										<b>Scores</b>	
Circulation	34	43	63	66	51	84	65	37	53	↓ 55	
Parking	57	81	84	71	50	84	77	66	81	↑ 72	
Service	40	38	67	86	29	57	56	54	72	↓ 55	
Recreation	51	72	80	62	46	79	63	68	54	⇒ 64	
General Landscape / Site	67	81	85	76	60	78	77	71	75	↑ 74	
Wayfinding / Signage	40	52	64	57	51	81	64	36	57	↓ 56	
<b>Scores</b>	↓ 48	⇒ 61	↑ 74	⇒ 70	↓ 48	↑ 77	⇒ 67	⇒ 55	⇒ 65		
<b>Middle Schools</b>											
	OCMS	EOMS	NOMS	SOMS							
<b>Assessment Categories</b>					<b>Scores</b>						
Circulation	43	71	51	47	↓ 53						
Parking	66	84	68	64	↑ 71						
Service	53	77	53	47	↓ 58						
Recreation	42	80	48	32	↓ 51						
General Landscape / Site	59	74	71	74	↑ 70						
Wayfinding / Signage	50	72	52	52	⇒ 57						
<b>Scores</b>	↓ 52	↑ 76	⇒ 57	↓ 53							
<b>High Schools</b>											
	OCHS	NOHS	SOHS			Arvin	OCSAC				
<b>Assessment Categories</b>				<b>Scores</b>					<b>Totals</b>		
Circulation	43	67	57	↓ 56	24	30	↓ 27				
Parking	63	78	73	↑ 71	60	56	⇒ 58				
Service	52	59	63	58	54	38	⇒ 46				
Recreation	63	65	80	↑ 69	71	69	↑ 70				
General Landscape / Site	47	72	71	⇒ 63	69	56	↑ 63				
Wayfinding / Signage	45	54	63	↓ 54	57	38	⇒ 48				
<b>Scores</b>	↓ 52	↑ 66	↑ 68		↑ 56	↓ 48					



# ASSESSMENT PHASE: PRELIMINARY FINDINGS BY CAMPUS

CAMPUS = 2 OR MORE SCHOOLS ON ONE PROPERTY

## Campus Overview

Campus Comparison	South	Buckner	North	East	Crestwood	Scores
<b>Assessment Categories</b>						
Circulation	49	36	61	69	47	52
Parking	71	62	74	78	70	71
Service	59	50	56	82	53	60
Recreation	59	57	59	71	75	64
General Landscape / Site	73	61	73	75	71	70
Wayfinding / Signage	52	48	57	65	51	54
<b>Scores</b>	60	52	63	73	61	

South Campus	Camden Station E.S.	Kenwood Station E.S.	SOMS	SOHS	Scores
<b>Assessment Categories</b>					
Circulation	37	53	47	57	49
Parking	66	81	64	73	71
Service	54	72	47	63	59
Recreation	68	54	32	80	59
General Landscape / Site	71	75	74	71	73
Wayfinding / Signage	36	57	52	63	52
<b>Scores</b>	55	65	53	68	

Buckner Campus	Buckner E.S. / OCPS	OCMS	OCHS	Arvin	Scores
<b>Assessment Categories</b>					
Circulation	34	43	43	24	36
Parking	57	66	63	60	62
Service	40	53	52	54	50
Recreation	51	42	63	71	57
General Landscape / Site	67	59	47	69	61
Wayfinding / Signage	40	50	45	57	48
<b>Scores</b>	48	52	52	56	



North Campus	Harmony E.S.	NOMS	NOHS	Scores
<b>Assessment Categories</b>				
Circulation	65	51	67	61
Parking	77	68	78	74
Service	56	53	59	56
Recreation	63	48	65	59
General Landscape / Site	77	71	72	73
Wayfinding / Signage	64	52	54	57
<b>Scores</b>	67	57	66	

East Campus	Locust Grove E.S.	EOMS	Scores
<b>Assessment Categories</b>			
Circulation	66	71	69
Parking	71	84	78
Service	86	77	82
Recreation	62	80	71
General Landscape / Site	76	74	75
Wayfinding / Signage	57	72	65
<b>Scores</b>	70	76	

Crestwood Campus	Crestwood E.S.	OCSAC	Scores
<b>Assessment Categories</b>			
Circulation	63	30	47
Parking	84	56	70
Service	67	38	53
Recreation	80	69	75
General Landscape / Site	85	56	71
Wayfinding / Signage	64	38	51
<b>Scores</b>	74	48	



# ASSESSMENT PHASE: PRELIMINARY FINDINGS DISCTRICT WIDE

																			
District Overview by Assessment Categories																			
Elementary Schools	Buckner E.S. / OCPS	Centerfield E.S.	Crestwood E.S.	Locust Grove E.S.	LaGrange E.S.	Goshen E.S.	Harmony E.S.	Camden Station E.S.	Kenwood Station E.S.	OCMS	EOMS	NOMS	SOMS	OCHS	NOHS	SOHS	Arvin	OCSAC	
Assessment Categories																			SCORE
Circulation	34	43	63	66	51	84	65	37	53	43	71	51	47	43	67	57	24	30	52
Parking	57	81	84	71	50	84	77	66	81	66	84	68	64	63	78	73	60	56	70
Service	40	38	67	86	29	57	56	54	72	53	77	53	47	52	59	63	54	38	55
Recreation	51	72	80	62	46	79	63	68	54	42	80	48	32	59	65	80	71	69	62
General Landscape / Site	67	81	85	76	60	78	77	71	75	59	74	71	74	47	72	71	69	56	70
Wayfinding / Signage	40	52	64	57	51	81	64	36	57	50	72	52	52	45	54	63	57	38	55
SCORE	↓ 48	⇒ 61	↑ 74	⇒ 70	↓ 48	↑ 77	⇒ 67	⇒ 55	⇒ 65	↓ 52	↑ 76	⇒ 57	↓ 53	↓ 52	⇒ 66	⇒ 68	⇒ 56	↓ 48	



## RECOMMENDATIONS PHASE: PRELIMINARY EXAMPLES



### CIRCULATION

- CAR RIDER DROP-OFF
- PEDESTRIAN ROUTES
- BUS CIRCULATION



### SERVICE

- VISUAL SCREENING
- FUNCTIONALITY
- ACCESS POINTS



### WAYFINDING / SIGNAGE

- TRAFFIC CONTROL
- ON CAMPUS DIRECTIONS
- PARKING



## RECOMMENDATIONS PHASE: PRELIMINARY EXAMPLES



### CIRCULATION

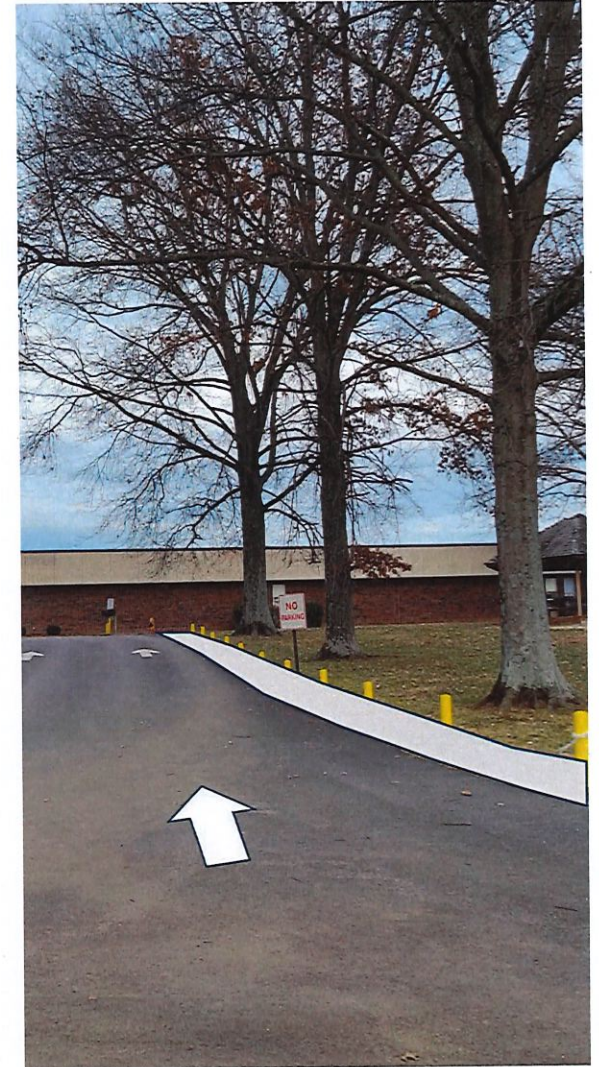
- CAR RIDER DROP-OFF
- PEDESTRIAN ROUTES
- BUS CIRCULATION

### WAYFINDING / SIGNAGE

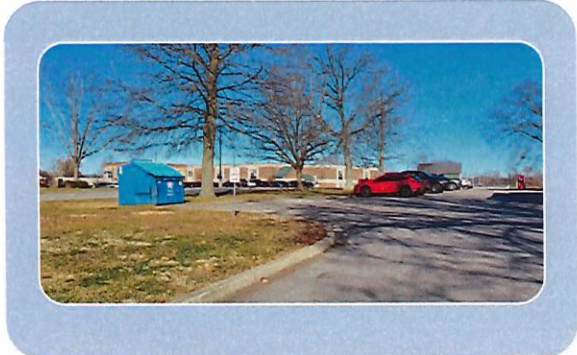
- TRAFFIC CONTROL
- ON CAMPUS DIRECTIONS
- PARKING



**CIRCULATION + WAYFINDING:  
CAR RIDER + PEDESTRIAN  
ROUTES + TRAFFIC CONTROL**  
DIRECTIONAL SIGNAGE +  
STRIPING STANDARDS  
NEW SIDEWALKS +  
CROSSWALKS



# RECOMMENDATIONS PHASE: PRELIMINARY EXAMPLES



**SERVICE**

- VISUAL SCREENING
- FUNCTIONALITY
- ACCESS POINTS



**SERVICE: VISUAL SCREENING + FUNCTIONALITY**  
STANDARD LAYOUT FOR DUMPSTER PAD  
STANDARD MATERIALS FOR SCREEN FENCE  
REPLACEMENT OF FENCING WHERE DAMAGED





# NEXT STEPS RECOMMENDATIONS PHASE: PROJECTS + PHASING

