

OLDHAM COUNTY BOARD OF EDUCATION

CONCERN

Consider Approval of the Schematic Design documents for the Buckner Alternative High School and OCHS Improvements Project.

DISCUSSION


On September 25, 2023, the Board of Education approved Studio Kramer Architects for the Buckner Alternative High School and OCHS Improvements Project.

The Kentucky Department of Education requires that the Oldham County Board of Education approve project plans at various stages during the design process. Brent M. Bohannon, Director of Facilities Management recommends approval of the Buckner Alternative High School and OCHS Improvements Project.

RECOMMENDATION

Approve the Schematic Design documents for the Buckner Alternative High School and OCHS Improvements Project for submission to the Kentucky Department of Education, District Facilities Branch, Division of District Support and hereby authorize the Director of Facilities Management to execute the necessary documentation.

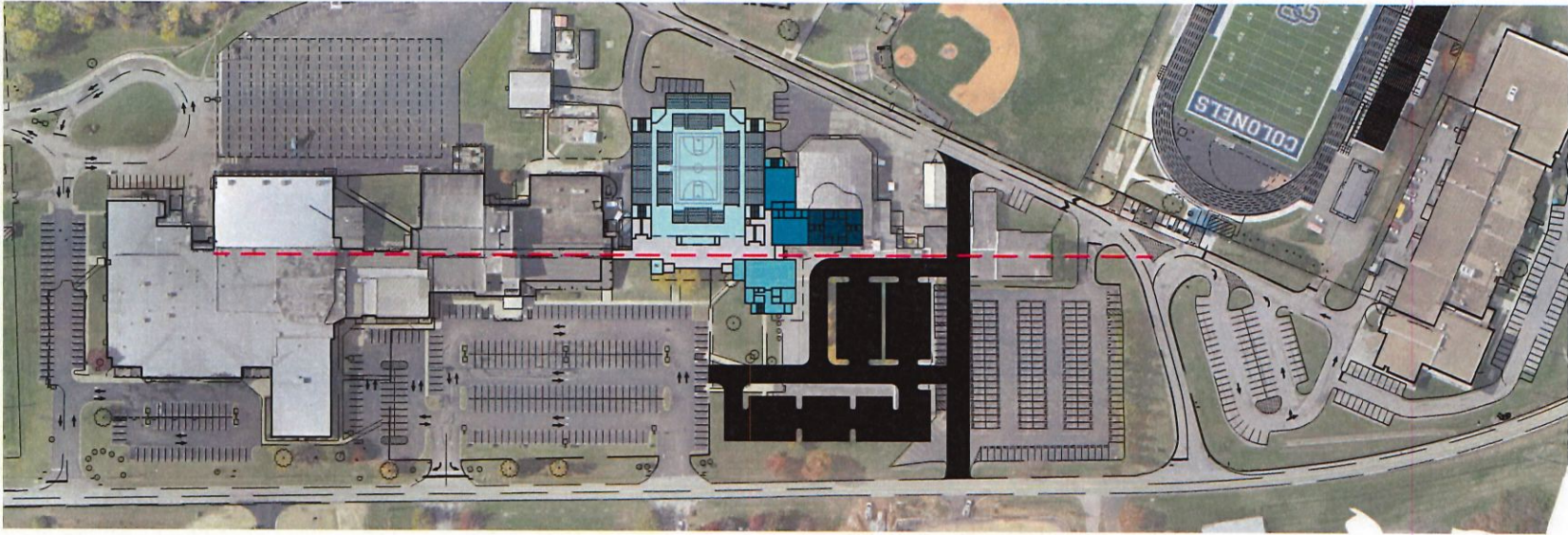
On a motion by _____, seconded by _____, the Board approved the Schematic Design documents for the Buckner Alternative High School and OCHS Improvements project for submission to the Kentucky Department of Education, District Facilities Branch, Division of District Support and hereby authorize the Director of Facilities Management to execute the necessary documentation.



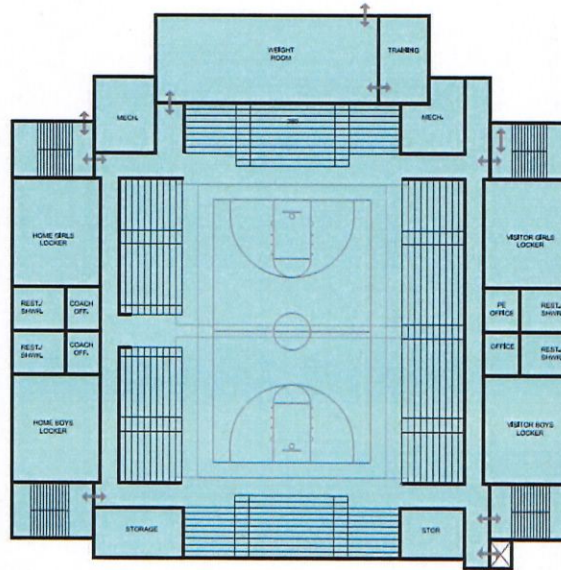
Suzanne Hundley, Board Chair



Dr. Jason Radford, Superintendent/Secretary



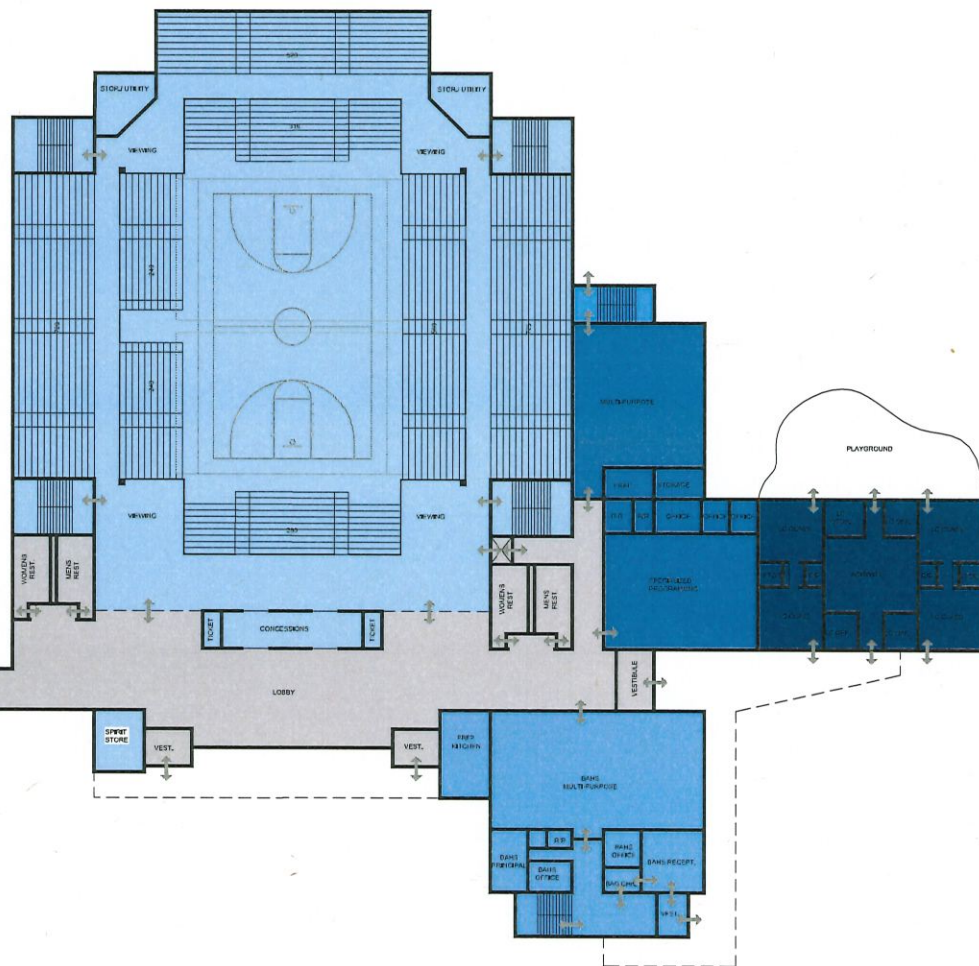
1 SITE PLAN
Scale: 1/128" = 1'-0"



- ATHLETICS
- ALTERNATIVE HIGH SCHOOL
- SPECIALIZED PROGRAMMING
- DAYCARE (LITTLE COLONELS)
- SHARED SPACES

2 LOWER LEVEL FLOOR PLAN
Scale: 1/16" = 1'-0"

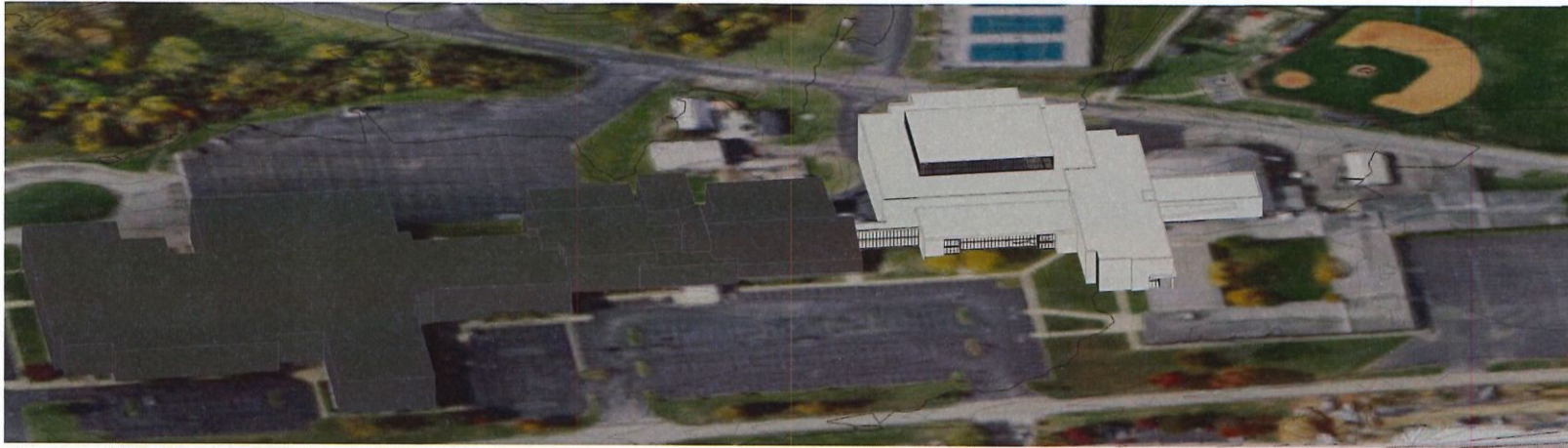
1 GROUND FLOOR PLAN
Scale: 1/16" = 1'-0"



2 SECOND FLOOR PLAN
Scale: 1/16" = 1'-0"



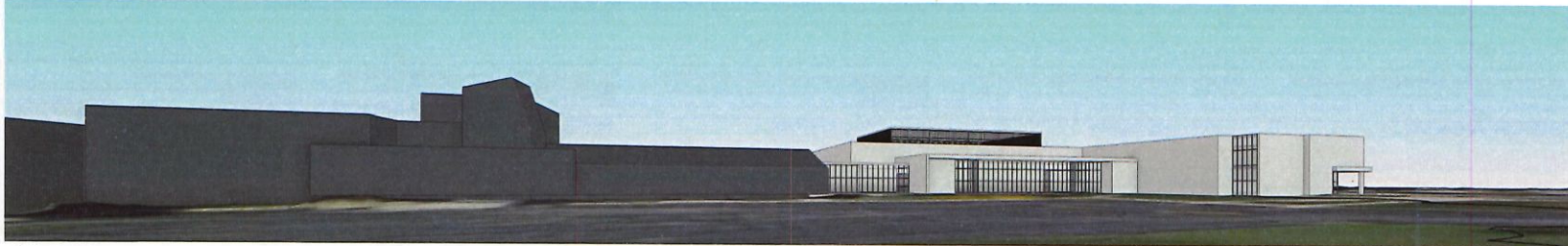
- ATHLETICS
- ALTERNATIVE HIGH SCHOOL
- SPECIALIZED PROGRAMMING
- DAYCARE (LITTLE COLONELS)
- SHARED SPACES



1 AERIAL VIEW
Scale: N.T.S.



2 AERIAL VIEW
Scale: N.T.S.



3 3D VIEW
Scale: N.T.S.

MODEL PROGRAM REVIEW

Alternative School

STUDENT CAP.

50	100	75			
3300	6600	4950		825 SF/EA	
4	8	6	Standard CR	825 SF/EA	4950
1	2	2	Resouce	375 SF/EA	750
2	4	3	Locally Id Program (OCATS)	700 SF/EA	2100
1	2	1.5	Intervention	200 SF/EA	300
Total Net Classroom					8100
1	1	1	Media Center/Comp. Lab	750	750
1	1	1	Prep-Kitchen	500	500
1	1	1	Multi-purpose	2600	2600
1	1	1	Admin	750	750
1	1	1	Custodial Receiving	250	250
Total Useable Space					12950
74%					3367
Gross Space					16317
Students				75	218
\$ /SF					425
\$					6,934,725.00

Specialized Non-Traditional

2	Multipurpose	1800 SF/EA	3600
2	Resource	375 SF/EA	750
2	Storage	300 SF/EA	600
2	Office	150 SF/EA	300
Total Net Classroom			5250
Total Useable Space			5250
74%			1365
Gross Space			6615
\$ /SF			400
\$			2,646,000.00

Community Outreach/Little Colonels/Adult Ed.

4	Resource	400 SF/EA	1600
1	Storage	300 SF/EA	300
3	Office	150 SF/EA	450
1	Classroom	825 SF/EA	825
Total Net Classroom			3175
Total Useable Space			3175
74%			825.5
Gross Space			4000.5
\$ /SF			400
\$			1,600,200.00

Spectator Gym

1600	Students		
17100		SF/EA	
1	PE Stor.	300 SF/EA	300
4	Coach/Inst. Off	175 SF/EA	700
4	Locker Rooms	825 ea	3300
4	Shower/Bathroom	200 EA	800
2	laundry Room	150 ea	300
1	Training Room	450 EA	450
1	Court Size (100' x 106')	10600 SF	10600
1	Bleachers	12600 SF	12600
1	Weight Room	2500	2500
			31550
68%			10096
			41646
\$ /SF			300
\$			12,493,800.00

Preliminary Project Total Estimate

\$ 23,674,725.00