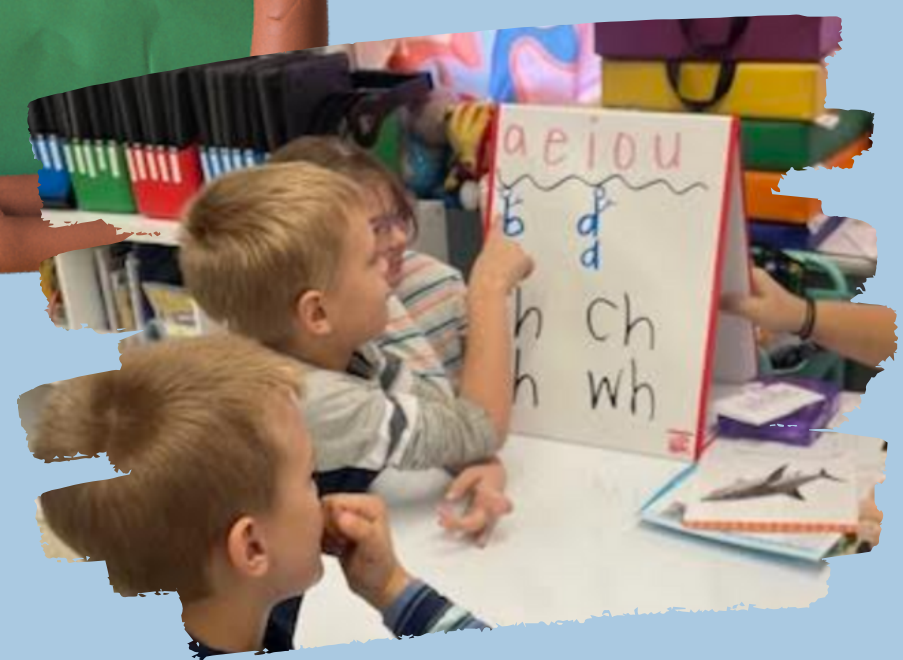


# Clay City Elementary



2023-2024 CSIP

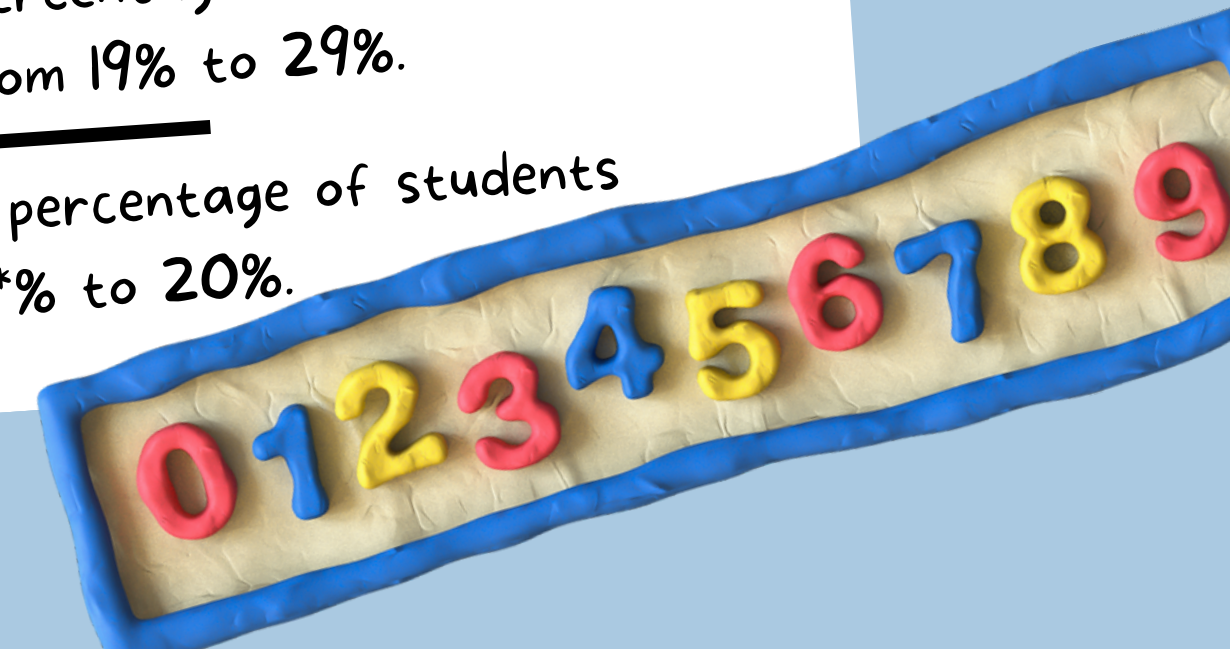






# CCE Goals

Reading	By 2026, Clay City Elementary will increase the percentage of students scoring proficient/distinguished in Reading from 22% to 32%.
Math	By 2026, Clay City Elementary will increase the percentage of students scoring proficient/distinguished in Math from 21% to 31%.
Science	By 2026, Clay City Elementary will increase the percentage of students scoring proficient/distinguished in Science from 25% to 35%.
Social Studies	By 2026, Clay City Elementary will increase the percentage of students scoring proficient/distinguished in Social Studies from 19% to 29%.
Writing	By 2026, Clay City Elementary will increase the percentage of students scoring proficient/distinguished in Writing from **% to 20%.



READING

MATH

SCIENCE,  
SOCIAL  
STUDIES,  
COMBINED  
WRITING

CCE  
2023-2024  
CSIP

Culture Survey

Targeted School for  
Improvement  
(Special Education)







- Implementation of HQIR Into Reading
- Implementation of the online learning platform, Waggle
- Title I Interventionists and Assistants for Station Teaching for Grades 1-5



# Reading



- Professional learning support with curriculum specialist, Emily Brewer for new reading curriculum
- Data analysis for tracking standard and target mastery
- ESS Concentration with students in Grades 3 and 4

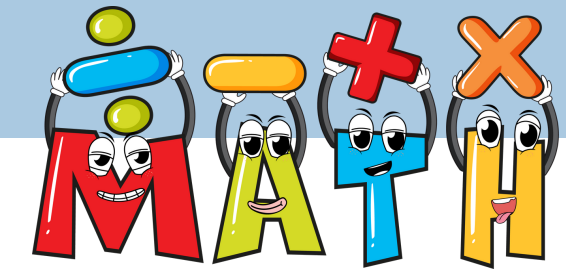
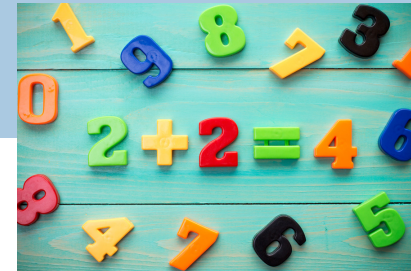
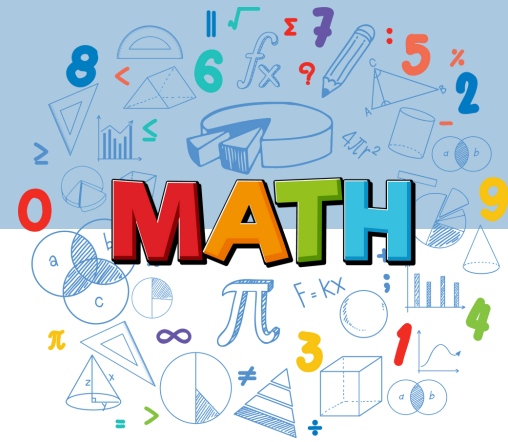


- Instructional planning in PLCs ("Teach Like a Champion")
- Peer observation
- Look and Listen Protocol





# Math



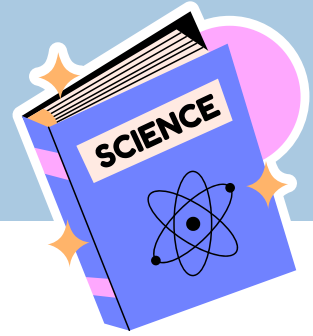
- Implementation of HQIR Reveal Math
- Implementation of the online learning platform, Red Bird
- Title I Interventionists and Assistants for Station Teaching for Grades 1-5

- KDE Math Pilot (Year 2) and collaboration with the ANET
- HQIR Walkthrough Tool
- Professional learning support with curriculum specialist, Diane Davis for the new math curriculum

- Data analysis for tracking standard and target mastery
- Peer observation
- Look and Listen Protocol
- Instructional planning in PLCs ("Teach Like a Champion")



# Science, SS, Writing and Learning Environment



- STEM Lab collaboration with Reveal Math connection
- Amplify Science

## Social Studies

- Small group differentiation
- Participation in HQIR review process for a new social studies curriculum
- Edulastic learning platform



## Writing

- Daily writing block using SPAT Technique
- Peer observation
- Professional Learning with SPAT Technique



## Learning Environment

- School Counselor
- PBIS Rewards
- Morning Meeting







# Targeted School for Improvement Special Education

- Co-teaching Model
- Disaggregation of Individual Education Plan
- UFLI (phonics instruction)
- SRA Reading and Math
- Great Leaps
- Shipley Continuous Improvement
- SDI (Specially Designed Instruction) professional learning
- Transformational Leadership Conference/KDE

