



Issue Paper

DATE:

01/25/2024

AGENDA ITEM (ACTION ITEM):

Consider / Approve the design development and construction documents for the River Ridge Elementary site circulation project (BG 24-173).

APPLICABLE BOARD POLICY:

01.1 Legal Status of the Board; 04.31 Authority to Encumber and Expend Funds; 702 KAR 4:050 Building Sites; Inspection and Approval

HISTORY/BACKGROUND:

The design development (DD) and construction documents (CD) for the River Ridge site circulation project reflects the input of the KCS D team, designers from Emboss Design, and civil engineers from Bayer Becker. The DD and CD documents will serve as the basis for the project bid process. It is anticipated for bidding to begin in early February 2024, a bid award to be recommended to the Board in March, and construction to begin mid-April 2024 should a successful bidder be selected and approved by the Board. This timeline allows for substantial project completion prior to the first day of school for the 2024-25 school year. The plans are reflective of the evolutionary design process starting with the schematic design that was approved on December 4, 2023.

FISCAL/BUDGETARY IMPACT:

All design costs are included in the total cost of the construction project as specified in the revised BG-1 approved on December 4, 2023.

RECOMMENDATION:

Approve the design development and construction documents for the River Ridge Elementary site circulation project (BG 24-173).

CONTACT PERSON:

Matt Rigg, Chief Operations Officer

Principal/Administrator



District Administrator



Superintendent

THIS DOCUMENT HAS BEEN REPRODUCED FROM THE ORIGINAL DRAWING BY MEANS OF A PHOTOCOPYING PROCESS. THE REPRODUCED DRAWING IS THE PROPERTY OF EMBASS DESIGN INC. AND IS NOT TO BE REPRODUCED OR TRANSMITTED IN ANY FORM OR BY ANY MEANS, ELECTRONIC OR MECHANICAL, INCLUDING PHOTOCOPYING, RECORDING, OR BY ANY INFORMATION STORAGE AND RETRIEVAL SYSTEM, WITHOUT THE WRITTEN PERMISSION OF EMBASS DESIGN INC.

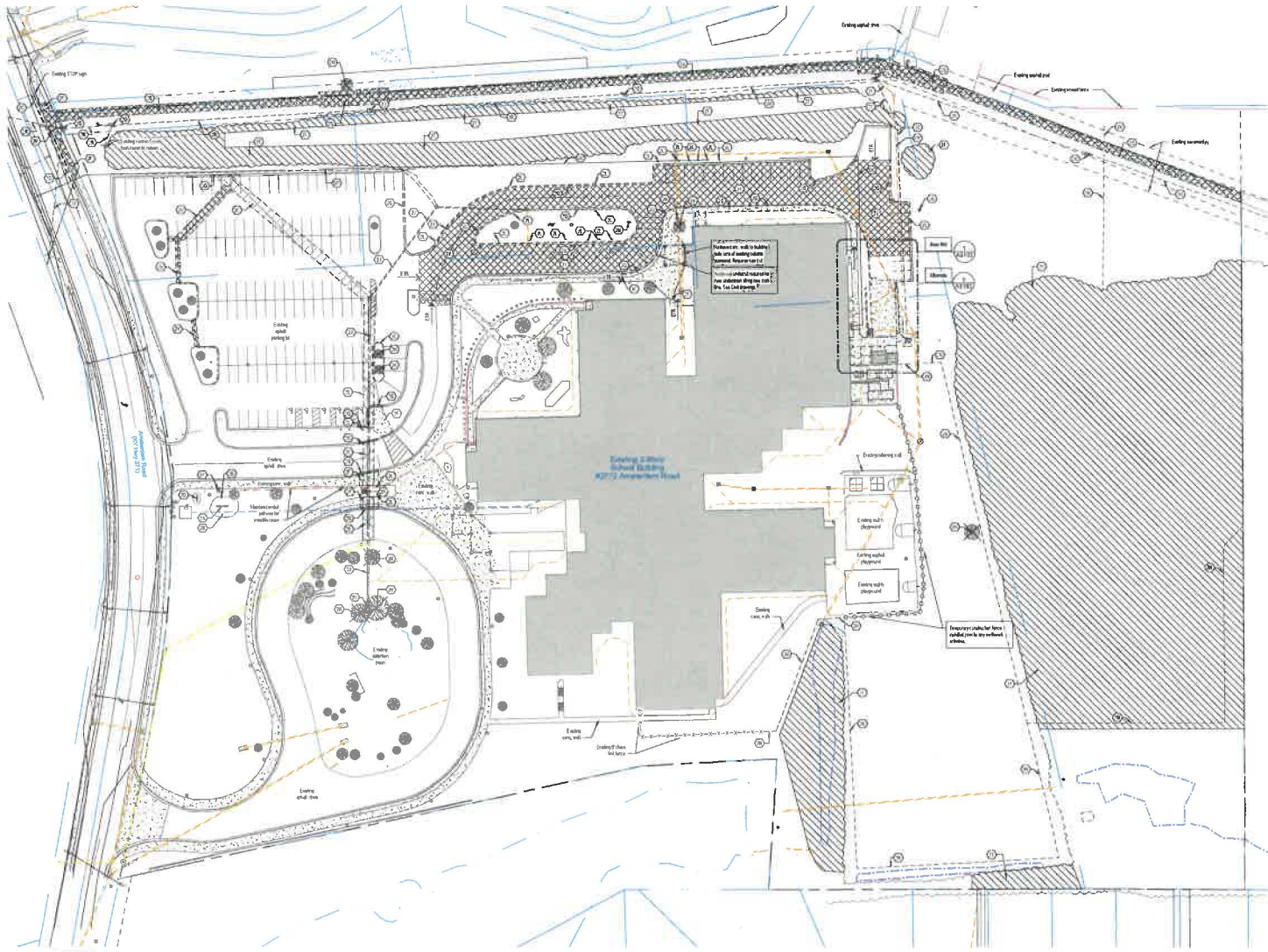


EmbassDesign.com 808 Monmouth Street,
 29541-0812 Newport, KY 41071



SHEET KEYNOTES

- 01 Remove underground pipe and foundation.
- 02 Remove 18" dia. pipe. See Detail 1000.
- 03 Remove 12" dia. pipe. See Detail 1000. Top and soil to finish.
- 04 Remove 6" dia. pipe. See Detail 1000. Top and soil to finish.
- 05 Remove 4" dia. pipe. See Detail 1000. Top and soil to finish.
- 06 Remove 2" dia. pipe. See Detail 1000. Top and soil to finish.
- 07 Remove 1" dia. pipe. See Detail 1000. Top and soil to finish.
- 08 Remove 1/2" dia. pipe. See Detail 1000. Top and soil to finish.
- 09 Remove 1/4" dia. pipe. See Detail 1000. Top and soil to finish.
- 10 Remove 1/8" dia. pipe. See Detail 1000. Top and soil to finish.
- 11 Remove 1/16" dia. pipe. See Detail 1000. Top and soil to finish.
- 12 Remove 1/32" dia. pipe. See Detail 1000. Top and soil to finish.
- 13 Remove 1/64" dia. pipe. See Detail 1000. Top and soil to finish.
- 14 Remove 1/128" dia. pipe. See Detail 1000. Top and soil to finish.
- 15 Remove 1/256" dia. pipe. See Detail 1000. Top and soil to finish.
- 16 Remove 1/512" dia. pipe. See Detail 1000. Top and soil to finish.
- 17 Remove 1/1024" dia. pipe. See Detail 1000. Top and soil to finish.
- 18 Remove 1/2048" dia. pipe. See Detail 1000. Top and soil to finish.
- 19 Remove 1/4096" dia. pipe. See Detail 1000. Top and soil to finish.
- 20 Remove 1/8192" dia. pipe. See Detail 1000. Top and soil to finish.
- 21 Remove 1/16384" dia. pipe. See Detail 1000. Top and soil to finish.
- 22 Remove 1/32768" dia. pipe. See Detail 1000. Top and soil to finish.
- 23 Remove 1/65536" dia. pipe. See Detail 1000. Top and soil to finish.
- 24 Remove 1/131072" dia. pipe. See Detail 1000. Top and soil to finish.
- 25 Remove 1/262144" dia. pipe. See Detail 1000. Top and soil to finish.
- 26 Remove 1/524288" dia. pipe. See Detail 1000. Top and soil to finish.
- 27 Remove 1/1048576" dia. pipe. See Detail 1000. Top and soil to finish.
- 28 Remove 1/2097152" dia. pipe. See Detail 1000. Top and soil to finish.



NO. 1 ARCHITECTURAL SITE PLAN - DEMOLITION
 AS100 SCALE: 1" = 40'-0"

**Site Expansion Project
 River Ridge Elementary School**
 2772 Amsterdam Road
 Villa Hills, KY, 41071
 BG# 24-173

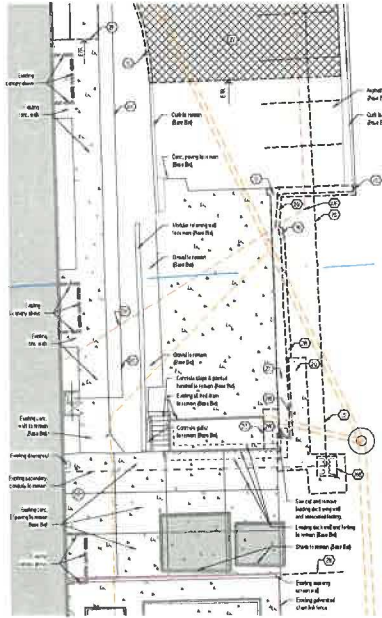
| NO. | DESCRIPTION | DATE |
|-----|-------------|----------|
| 01 | DESIGNED | 12/21/11 |

ARCHITECTURAL SITE PLAN - DEMOLITION

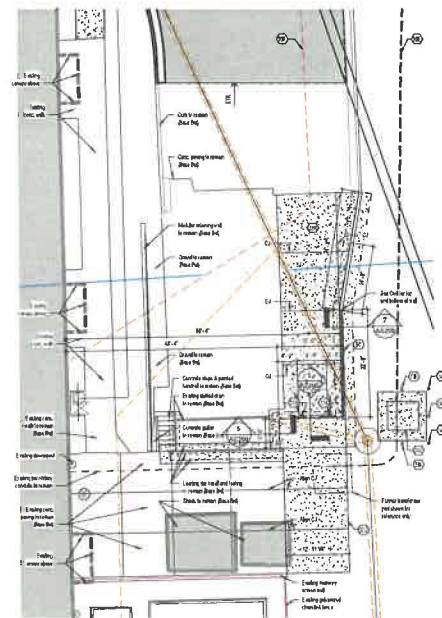
22-105

AS100

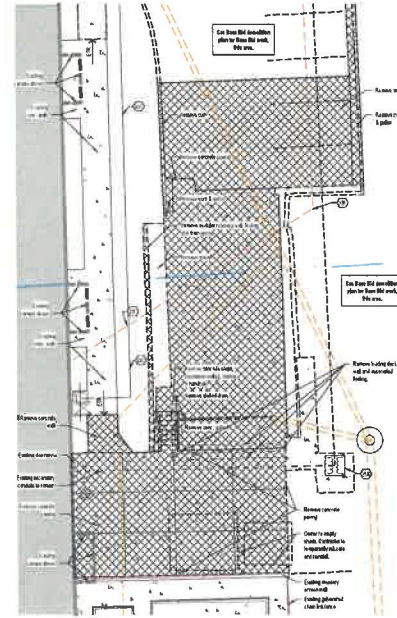
THIS DOCUMENT AND THE DESIGNATIONS INCORPORATED HEREIN ARE THE PROPERTY OF ARCHITECTURE AND DESIGN INC. AND ARE TO BE USED ONLY FOR THE PROJECT AND SITE SPECIFICALLY IDENTIFIED HEREIN. ANY REUSE OF THIS DOCUMENT FOR ANY OTHER PROJECT WITHOUT THE WRITTEN PERMISSION OF ARCHITECTURE AND DESIGN INC. IS STRICTLY PROHIBITED.



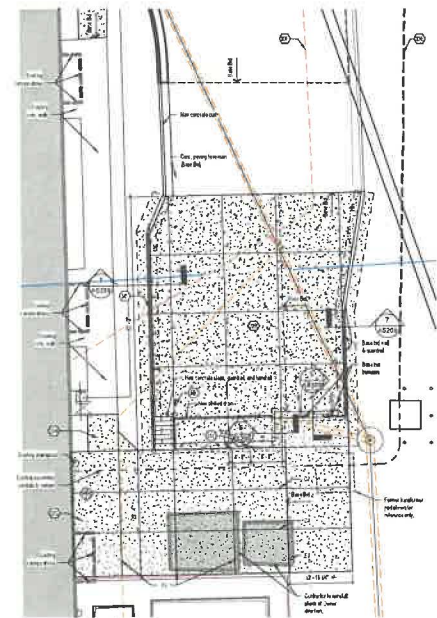
NO. PLAN 1
AS102 SCALE: 1" = 16'-0"



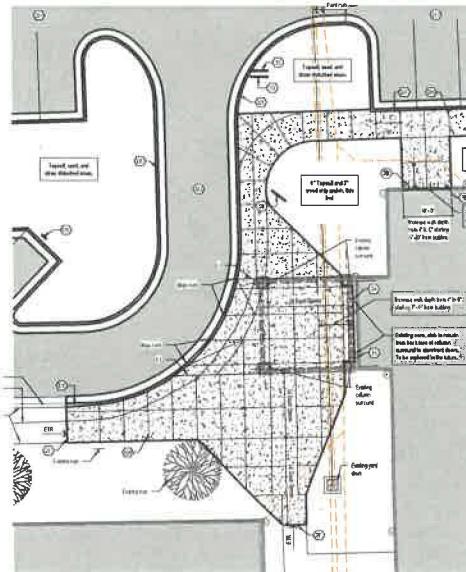
NO. PLAN 2
AS102 SCALE: 1" = 16'-0"



NO. PLAN 3
AS102 SCALE: 1" = 16'-0"



NO. PLAN 4
AS102 SCALE: 1" = 16'-0"



NO. PLAN 5
AS102 SCALE: 1" = 16'-0"

SHEET KEYNOTES

- 01 Existing masonry walls to be removed
- 02 Existing masonry walls to be removed
- 03 Existing masonry walls to be removed
- 04 Existing masonry walls to be removed
- 05 Existing masonry walls to be removed
- 06 Existing masonry walls to be removed
- 07 Existing masonry walls to be removed
- 08 Existing masonry walls to be removed
- 09 Existing masonry walls to be removed
- 10 Existing masonry walls to be removed
- 11 Existing masonry walls to be removed
- 12 Existing masonry walls to be removed
- 13 Existing masonry walls to be removed
- 14 Existing masonry walls to be removed
- 15 Existing masonry walls to be removed
- 16 Existing masonry walls to be removed
- 17 Existing masonry walls to be removed
- 18 Existing masonry walls to be removed
- 19 Existing masonry walls to be removed
- 20 Existing masonry walls to be removed
- 21 Existing masonry walls to be removed
- 22 Existing masonry walls to be removed
- 23 Existing masonry walls to be removed
- 24 Existing masonry walls to be removed
- 25 Existing masonry walls to be removed
- 26 Existing masonry walls to be removed
- 27 Existing masonry walls to be removed
- 28 Existing masonry walls to be removed
- 29 Existing masonry walls to be removed

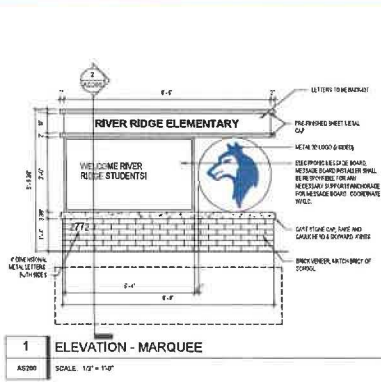


Site Expansion Project
River Ridge Elementary School
 2772 Amsterdam Road
 Villa Hills, KY, 41071
 BG# 24-173

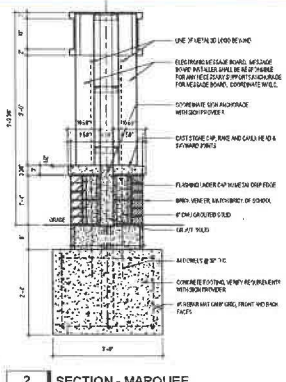
| NO. | DESCRIPTION | DATE |
|-----|-------------|---------|
| 01 | CD Approved | 1/20/21 |

ENLARGED
 ARCHITECTURAL SITE
 PLANS

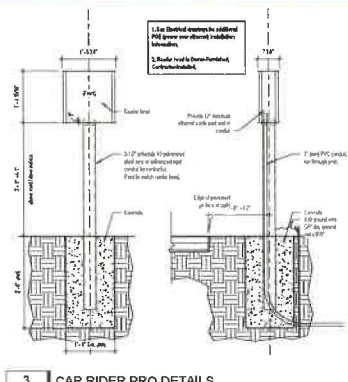
THE DOCUMENT AND THE DESIGN INFORMATION CONTAINED HEREIN IS THE PROPERTY OF PROFESSIONAL SERVICE, INC. AND IS LOANED TO YOU BY PROFESSIONAL SERVICE, INC. IT IS NOT TO BE REPRODUCED OR TRANSMITTED IN ANY FORM OR BY ANY MEANS, ELECTRONIC OR MECHANICAL, INCLUDING PHOTOCOPYING, RECORDING, OR BY ANY INFORMATION STORAGE AND RETRIEVAL SYSTEM, WITHOUT THE WRITTEN PERMISSION OF PROFESSIONAL SERVICE, INC. ANY REPRODUCTION OR TRANSMISSION OF THIS DOCUMENT WITHOUT THE WRITTEN PERMISSION OF PROFESSIONAL SERVICE, INC. IS STRICTLY PROHIBITED.



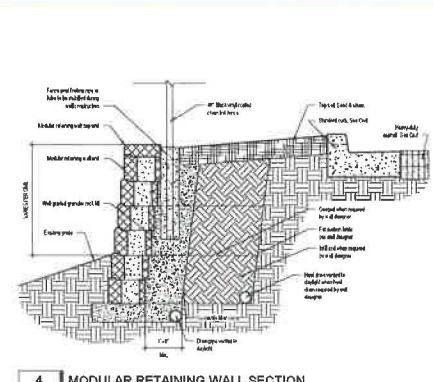
1 ELEVATION - MARQUEE
SCALE: 1/2" = 1'-0"



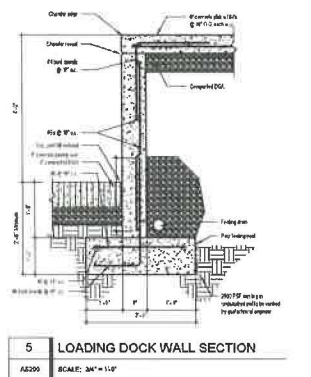
2 SECTION - MARQUEE
SCALE: 3/4" = 1'-0"



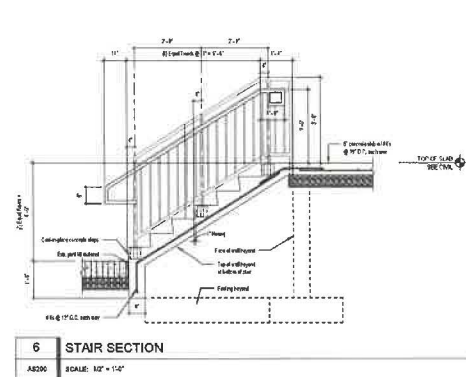
3 CAR RIDER PRO DETAILS
SCALE: 3/4" = 1'-0"



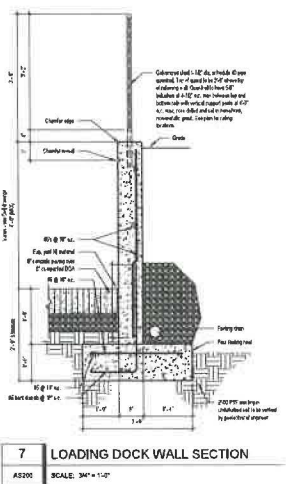
4 MODULAR RETAINING WALL SECTION
SCALE: 3/4" = 1'-0"



5 LOADING DOCK WALL SECTION
SCALE: 3/4" = 1'-0"



6 STAIR SECTION
SCALE: 1/2" = 1'-0"



7 LOADING DOCK WALL SECTION
SCALE: 3/4" = 1'-0"



Professional Design Firm 618 Monmouth Street
688043-8812 Newport, KY 41071



Site Expansion Project
River Ridge Elementary School
2772 Amsterdam Road
Villa Hills, KY, 41071
BG# 24-173

| NO. | DESCRIPTION | DATE |
|-----|-------------|----------|
| 101 | ISSUED | 10/20/21 |

ARCHITECTURAL SITE
DETAILS & SECTIONS

22-105

AS200

RIVER RIDGE ELEMENTARY ACCESS IMPROVEMENTS

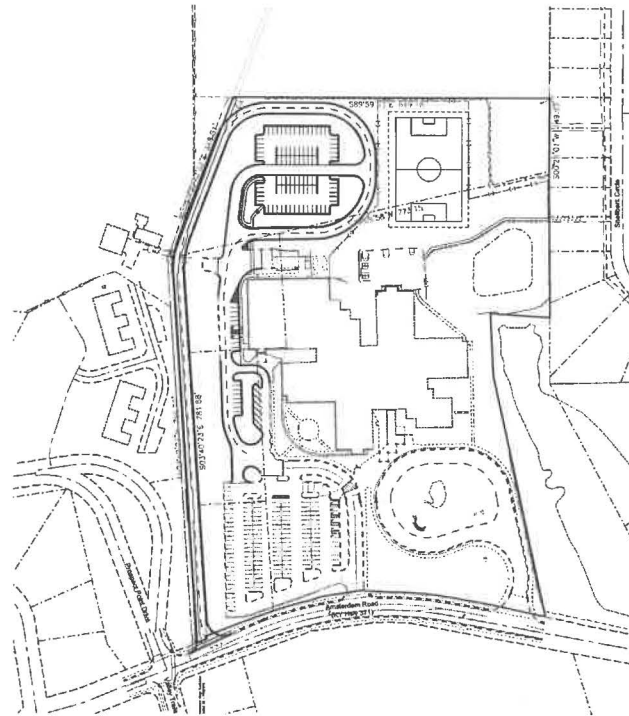
2772 AMSTERDAM ROAD
CITY OF VILLA HILLS
KENTON COUNTY, KENTUCKY

BG# 24-173

CONTRACTOR TO REFER TO SEPARATE
SEQUENCING PLAN FOR ORDER AND
SEQUENCE OF PROPOSED
IMPROVEMENTS



VICINITY MAP
(Not to Scale)



PROJECT MAP
SCALE: 1" = 100'

| SHEET NO. | DRAWING TITLE | ISSUED DATE | REVISION NUMBER | REVISION DATE |
|-----------|------------------------------|-------------|-----------------|---------------|
| C100 | CIVIL - TITLE SHEET | 1-24-24 | | |
| C200 | GENERAL NOTES | 1-24-24 | | |
| C300 | EXISTING BASEMAP & DEMO PLAN | 1-24-24 | | |
| C400 | SITE PLAN | 1-24-24 | | |
| C500 | UTILITY PLAN | 1-24-24 | | |
| C600 | STORM PROFILES | 1-24-24 | | |
| C700 | GRADING PLAN | 1-24-24 | | |
| C701 | DETAILED GRADING PLAN | 1-24-24 | | |
| C702 | GRADING DETAILS | 1-24-24 | | |
| C800 | STANDARD DETAILS | 1-24-24 | | |
| C900 | EROSION CONTROL DETAILS | 1-24-24 | | |

BASEMAP LEGEND

| | | | |
|---|--------------------------|---|--------------|
| ⊙ | → 1/4" Utility S.A. | ⊙ | → 1/4" Gas |
| ⊙ | → 1/4" Sewer S.A. | ⊙ | → 1/4" Water |
| ⊙ | → 1/4" Storm S.A. | ⊙ | → 1/4" Storm |
| ⊙ | → 1/4" Storm S.A. (18") | ⊙ | → 1/4" Storm |
| ⊙ | → 1/4" Storm S.A. (24") | ⊙ | → 1/4" Storm |
| ⊙ | → 1/4" Storm S.A. (30") | ⊙ | → 1/4" Storm |
| ⊙ | → 1/4" Storm S.A. (36") | ⊙ | → 1/4" Storm |
| ⊙ | → 1/4" Storm S.A. (42") | ⊙ | → 1/4" Storm |
| ⊙ | → 1/4" Storm S.A. (48") | ⊙ | → 1/4" Storm |
| ⊙ | → 1/4" Storm S.A. (54") | ⊙ | → 1/4" Storm |
| ⊙ | → 1/4" Storm S.A. (60") | ⊙ | → 1/4" Storm |
| ⊙ | → 1/4" Storm S.A. (66") | ⊙ | → 1/4" Storm |
| ⊙ | → 1/4" Storm S.A. (72") | ⊙ | → 1/4" Storm |
| ⊙ | → 1/4" Storm S.A. (78") | ⊙ | → 1/4" Storm |
| ⊙ | → 1/4" Storm S.A. (84") | ⊙ | → 1/4" Storm |
| ⊙ | → 1/4" Storm S.A. (90") | ⊙ | → 1/4" Storm |
| ⊙ | → 1/4" Storm S.A. (96") | ⊙ | → 1/4" Storm |
| ⊙ | → 1/4" Storm S.A. (102") | ⊙ | → 1/4" Storm |
| ⊙ | → 1/4" Storm S.A. (108") | ⊙ | → 1/4" Storm |
| ⊙ | → 1/4" Storm S.A. (114") | ⊙ | → 1/4" Storm |
| ⊙ | → 1/4" Storm S.A. (120") | ⊙ | → 1/4" Storm |
| ⊙ | → 1/4" Storm S.A. (126") | ⊙ | → 1/4" Storm |
| ⊙ | → 1/4" Storm S.A. (132") | ⊙ | → 1/4" Storm |
| ⊙ | → 1/4" Storm S.A. (138") | ⊙ | → 1/4" Storm |
| ⊙ | → 1/4" Storm S.A. (144") | ⊙ | → 1/4" Storm |
| ⊙ | → 1/4" Storm S.A. (150") | ⊙ | → 1/4" Storm |
| ⊙ | → 1/4" Storm S.A. (156") | ⊙ | → 1/4" Storm |
| ⊙ | → 1/4" Storm S.A. (162") | ⊙ | → 1/4" Storm |
| ⊙ | → 1/4" Storm S.A. (168") | ⊙ | → 1/4" Storm |
| ⊙ | → 1/4" Storm S.A. (174") | ⊙ | → 1/4" Storm |
| ⊙ | → 1/4" Storm S.A. (180") | ⊙ | → 1/4" Storm |
| ⊙ | → 1/4" Storm S.A. (186") | ⊙ | → 1/4" Storm |
| ⊙ | → 1/4" Storm S.A. (192") | ⊙ | → 1/4" Storm |
| ⊙ | → 1/4" Storm S.A. (198") | ⊙ | → 1/4" Storm |
| ⊙ | → 1/4" Storm S.A. (204") | ⊙ | → 1/4" Storm |
| ⊙ | → 1/4" Storm S.A. (210") | ⊙ | → 1/4" Storm |
| ⊙ | → 1/4" Storm S.A. (216") | ⊙ | → 1/4" Storm |
| ⊙ | → 1/4" Storm S.A. (222") | ⊙ | → 1/4" Storm |
| ⊙ | → 1/4" Storm S.A. (228") | ⊙ | → 1/4" Storm |
| ⊙ | → 1/4" Storm S.A. (234") | ⊙ | → 1/4" Storm |
| ⊙ | → 1/4" Storm S.A. (240") | ⊙ | → 1/4" Storm |
| ⊙ | → 1/4" Storm S.A. (246") | ⊙ | → 1/4" Storm |
| ⊙ | → 1/4" Storm S.A. (252") | ⊙ | → 1/4" Storm |
| ⊙ | → 1/4" Storm S.A. (258") | ⊙ | → 1/4" Storm |
| ⊙ | → 1/4" Storm S.A. (264") | ⊙ | → 1/4" Storm |
| ⊙ | → 1/4" Storm S.A. (270") | ⊙ | → 1/4" Storm |
| ⊙ | → 1/4" Storm S.A. (276") | ⊙ | → 1/4" Storm |
| ⊙ | → 1/4" Storm S.A. (282") | ⊙ | → 1/4" Storm |
| ⊙ | → 1/4" Storm S.A. (288") | ⊙ | → 1/4" Storm |
| ⊙ | → 1/4" Storm S.A. (294") | ⊙ | → 1/4" Storm |
| ⊙ | → 1/4" Storm S.A. (300") | ⊙ | → 1/4" Storm |
| ⊙ | → 1/4" Storm S.A. (306") | ⊙ | → 1/4" Storm |
| ⊙ | → 1/4" Storm S.A. (312") | ⊙ | → 1/4" Storm |
| ⊙ | → 1/4" Storm S.A. (318") | ⊙ | → 1/4" Storm |
| ⊙ | → 1/4" Storm S.A. (324") | ⊙ | → 1/4" Storm |
| ⊙ | → 1/4" Storm S.A. (330") | ⊙ | → 1/4" Storm |
| ⊙ | → 1/4" Storm S.A. (336") | ⊙ | → 1/4" Storm |
| ⊙ | → 1/4" Storm S.A. (342") | ⊙ | → 1/4" Storm |
| ⊙ | → 1/4" Storm S.A. (348") | ⊙ | → 1/4" Storm |
| ⊙ | → 1/4" Storm S.A. (354") | ⊙ | → 1/4" Storm |
| ⊙ | → 1/4" Storm S.A. (360") | ⊙ | → 1/4" Storm |
| ⊙ | → 1/4" Storm S.A. (366") | ⊙ | → 1/4" Storm |
| ⊙ | → 1/4" Storm S.A. (372") | ⊙ | → 1/4" Storm |
| ⊙ | → 1/4" Storm S.A. (378") | ⊙ | → 1/4" Storm |
| ⊙ | → 1/4" Storm S.A. (384") | ⊙ | → 1/4" Storm |
| ⊙ | → 1/4" Storm S.A. (390") | ⊙ | → 1/4" Storm |
| ⊙ | → 1/4" Storm S.A. (396") | ⊙ | → 1/4" Storm |
| ⊙ | → 1/4" Storm S.A. (402") | ⊙ | → 1/4" Storm |
| ⊙ | → 1/4" Storm S.A. (408") | ⊙ | → 1/4" Storm |
| ⊙ | → 1/4" Storm S.A. (414") | ⊙ | → 1/4" Storm |
| ⊙ | → 1/4" Storm S.A. (420") | ⊙ | → 1/4" Storm |
| ⊙ | → 1/4" Storm S.A. (426") | ⊙ | → 1/4" Storm |
| ⊙ | → 1/4" Storm S.A. (432") | ⊙ | → 1/4" Storm |
| ⊙ | → 1/4" Storm S.A. (438") | ⊙ | → 1/4" Storm |
| ⊙ | → 1/4" Storm S.A. (444") | ⊙ | → 1/4" Storm |
| ⊙ | → 1/4" Storm S.A. (450") | ⊙ | → 1/4" Storm |
| ⊙ | → 1/4" Storm S.A. (456") | ⊙ | → 1/4" Storm |
| ⊙ | → 1/4" Storm S.A. (462") | ⊙ | → 1/4" Storm |
| ⊙ | → 1/4" Storm S.A. (468") | ⊙ | → 1/4" Storm |
| ⊙ | → 1/4" Storm S.A. (474") | ⊙ | → 1/4" Storm |
| ⊙ | → 1/4" Storm S.A. (480") | ⊙ | → 1/4" Storm |
| ⊙ | → 1/4" Storm S.A. (486") | ⊙ | → 1/4" Storm |
| ⊙ | → 1/4" Storm S.A. (492") | ⊙ | → 1/4" Storm |
| ⊙ | → 1/4" Storm S.A. (498") | ⊙ | → 1/4" Storm |
| ⊙ | → 1/4" Storm S.A. (504") | ⊙ | → 1/4" Storm |
| ⊙ | → 1/4" Storm S.A. (510") | ⊙ | → 1/4" Storm |
| ⊙ | → 1/4" Storm S.A. (516") | ⊙ | → 1/4" Storm |
| ⊙ | → 1/4" Storm S.A. (522") | ⊙ | → 1/4" Storm |
| ⊙ | → 1/4" Storm S.A. (528") | ⊙ | → 1/4" Storm |
| ⊙ | → 1/4" Storm S.A. (534") | ⊙ | → 1/4" Storm |
| ⊙ | → 1/4" Storm S.A. (540") | ⊙ | → 1/4" Storm |
| ⊙ | → 1/4" Storm S.A. (546") | ⊙ | → 1/4" Storm |
| ⊙ | → 1/4" Storm S.A. (552") | ⊙ | → 1/4" Storm |
| ⊙ | → 1/4" Storm S.A. (558") | ⊙ | → 1/4" Storm |
| ⊙ | → 1/4" Storm S.A. (564") | ⊙ | → 1/4" Storm |
| ⊙ | → 1/4" Storm S.A. (570") | ⊙ | → 1/4" Storm |
| ⊙ | → 1/4" Storm S.A. (576") | ⊙ | → 1/4" Storm |
| ⊙ | → 1/4" Storm S.A. (582") | ⊙ | → 1/4" Storm |
| ⊙ | → 1/4" Storm S.A. (588") | ⊙ | → 1/4" Storm |
| ⊙ | → 1/4" Storm S.A. (594") | ⊙ | → 1/4" Storm |
| ⊙ | → 1/4" Storm S.A. (600") | ⊙ | → 1/4" Storm |

ARCHITECT
EMBOSS
906 MONMOUTH STREET
NEWPORT, KY 41071

CIVIL ENGINEER
BAYER BECKER
209 GRANDVIEW DRIVE
FORT MITCHELL, KY 41017

OWNER
KENTON COUNTY SCHOOL DISTRICT
1055 EATON DRIVE
FORT WRIGHT, KY 41017



THE STATE OF KENTUCKY
OFFICE OF THE REGISTERED PROFESSIONAL ENGINEERS
14300 GRANDVIEW DRIVE
FORT MITCHELL, KY 41017
1-800-752-6007
ISSUING DATE: 12/22/2023

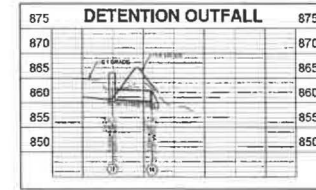
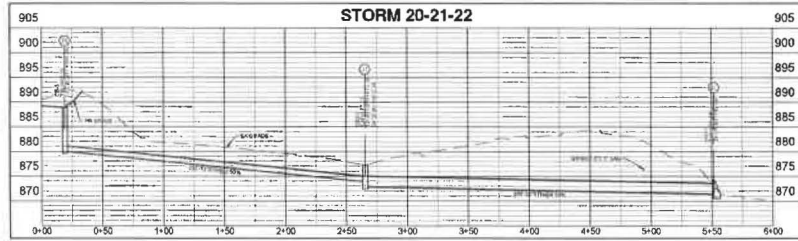
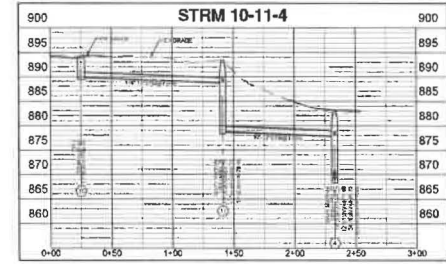
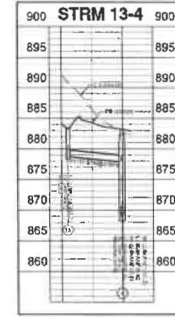
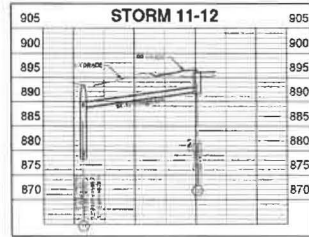
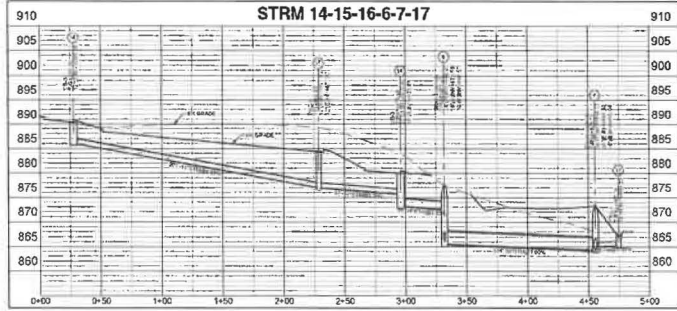
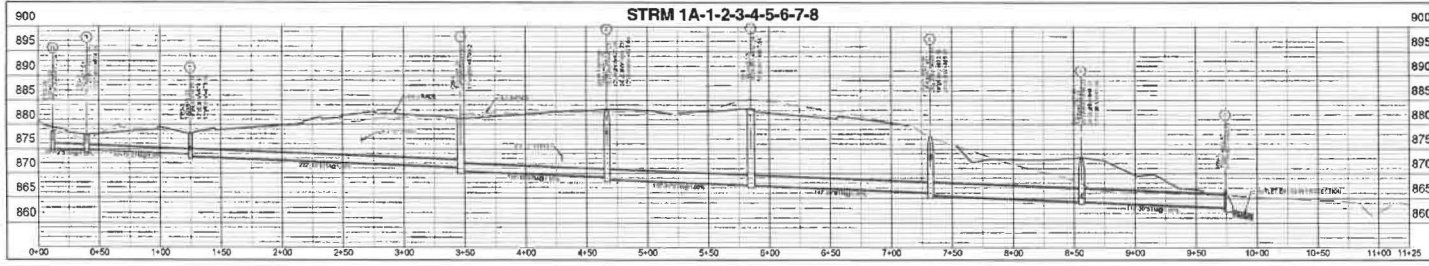
PRELIMINARY

RIVER RIDGE ELEMENTARY
ACCESS IMPROVEMENTS
2772 AMSTERDAM ROAD
CITY OF VILLA HILLS
KENTON COUNTY, KY 41017
CIVIL - TITLE SHEET



DATE: 1-24-24
SCALE: AS SHOWN
SHEET: C100
PROJECT: RIVER RIDGE ELEMENTARY ACCESS IMPROVEMENTS
DRAWN BY: MD
CHECKED BY: MDW
DATE: 1-24-24

C100



SCALE:
H: 1"=40'
V: 1"=10'

| Item | Date | Revised Description |
|------|------|---------------------|
| 1 | | |
| 2 | | |
| 3 | | |
| 4 | | |
| 5 | | |
| 6 | | |

RIVER RIDGE ELEMENTARY
ACCESS IMPROVEMENTS
2775 W. BELLEVILLE ROAD
ALLEN, TEXAS 75015
DCR 24-175

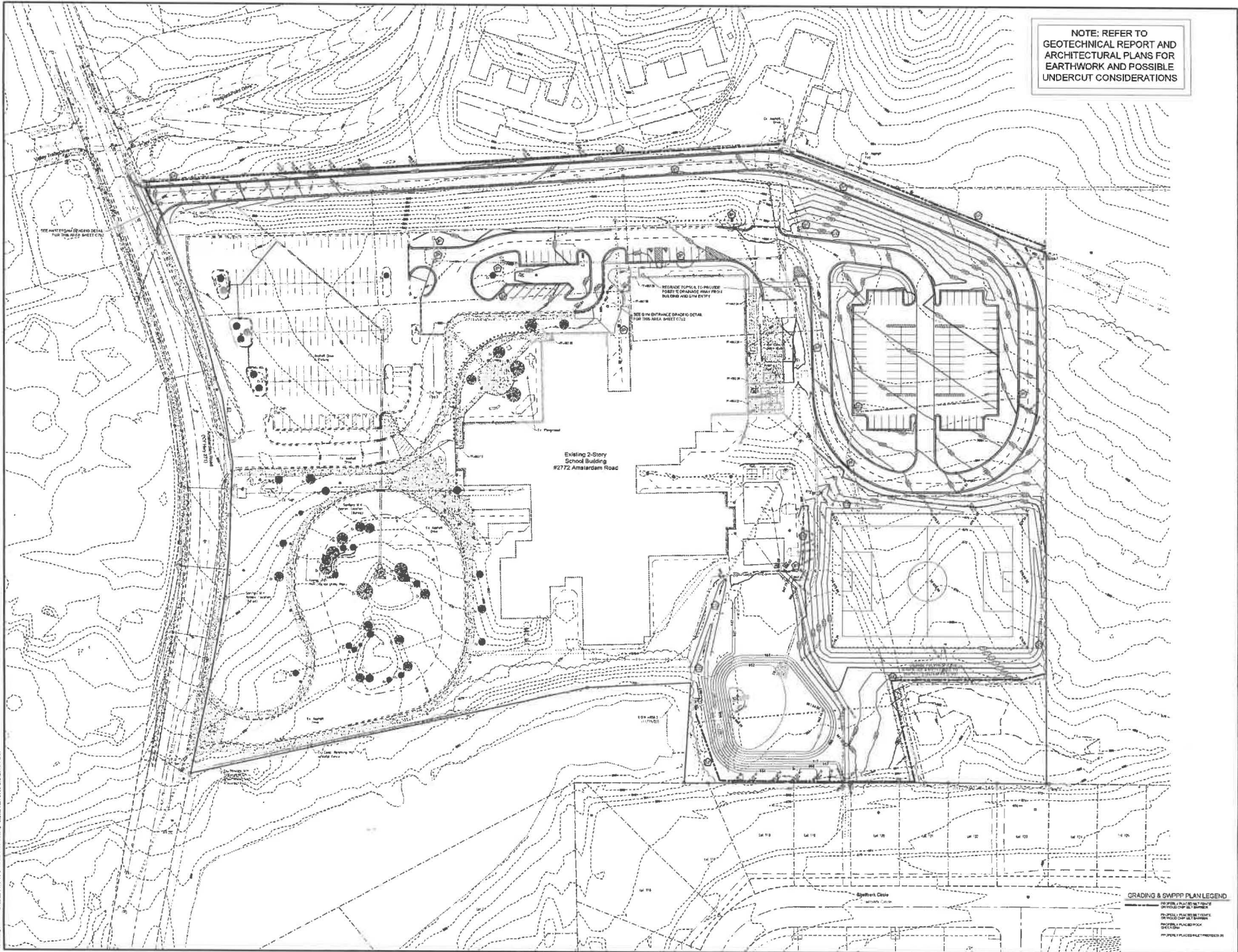
bayer becker
200 Southway Drive
Frisco, TX 75034-1115
Phone: 972-251-1115

Project: 24-175-01
Drawn by: JLC
Checked by: JLC
Scale: 1"=40'
Date: 1-24-24

C600

Plot Date: Jan 24, 2024 1:53:46pm
Drawing Name: C:\Projects\24-175-01\Drawings\24-175-01-C600-PROFILES.dwg
User: JLC
Printer: C:\Program Files\Autodesk\AutoCAD 2024\Plot\acplott100.ctb

NOTE: REFER TO
 GEOTECHNICAL REPORT AND
 ARCHITECTURAL PLANS FOR
 EARTHWORK AND POSSIBLE
 UNDERCUT CONSIDERATIONS



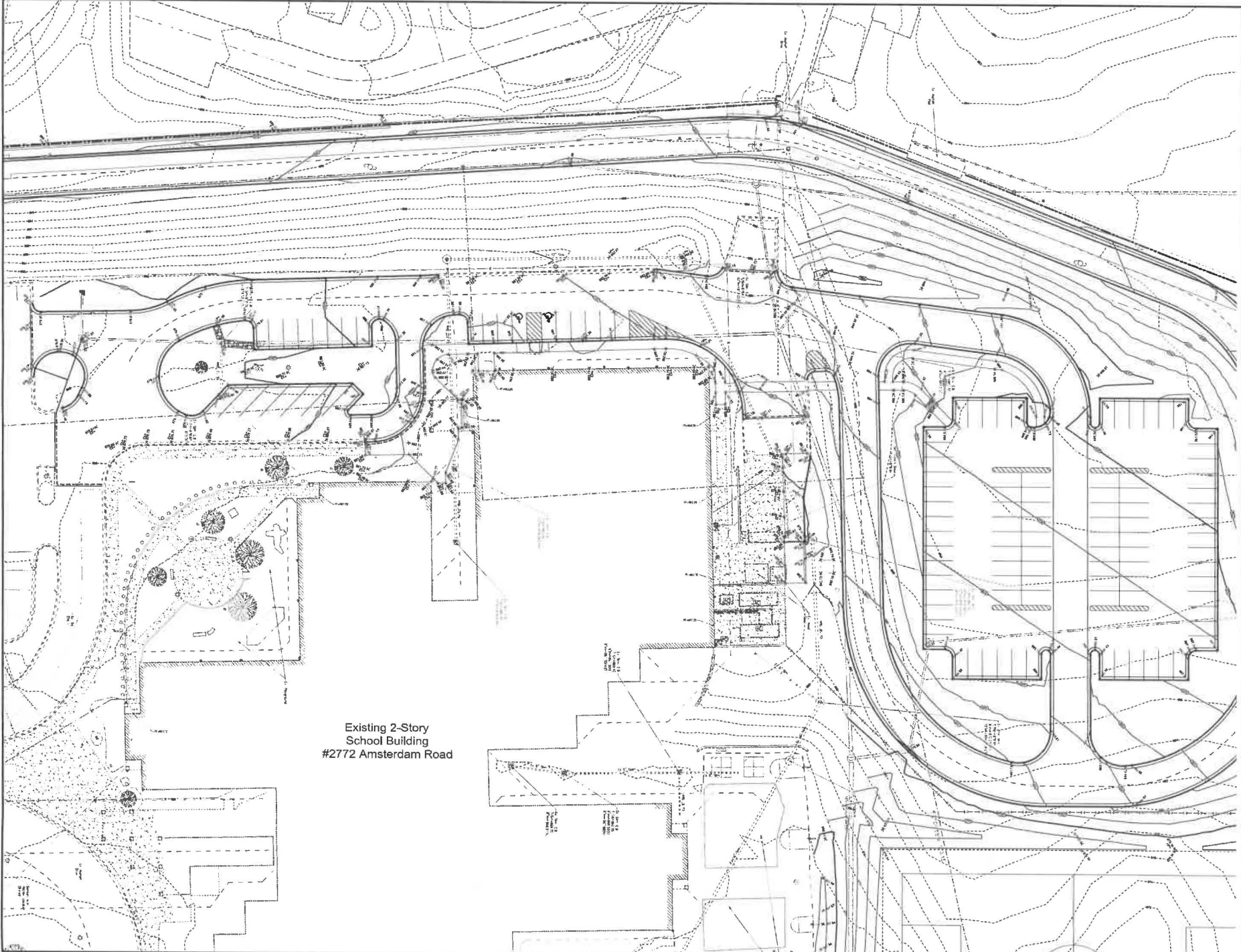
| Sheet | Area | Scale | Notes |
|-------|---------------------|----------|-----------------------|
| C700 | 2772 Amstardam Road | 1" = 40' | Grading and Site Plan |
| C701 | 2772 Amstardam Road | 1" = 40' | Grading and Site Plan |
| C702 | 2772 Amstardam Road | 1" = 40' | Grading and Site Plan |
| C703 | 2772 Amstardam Road | 1" = 40' | Grading and Site Plan |
| C704 | 2772 Amstardam Road | 1" = 40' | Grading and Site Plan |
| C705 | 2772 Amstardam Road | 1" = 40' | Grading and Site Plan |
| C706 | 2772 Amstardam Road | 1" = 40' | Grading and Site Plan |
| C707 | 2772 Amstardam Road | 1" = 40' | Grading and Site Plan |
| C708 | 2772 Amstardam Road | 1" = 40' | Grading and Site Plan |
| C709 | 2772 Amstardam Road | 1" = 40' | Grading and Site Plan |
| C710 | 2772 Amstardam Road | 1" = 40' | Grading and Site Plan |

**RIVER RIDGE ELEMENTARY
 ACCESS IMPROVEMENTS**
 2772 AMSTARDAM ROAD
 WILIA HILLS, MD
 USG 24-075
 GRADING PLAN



C700

PROJECT: RIVER RIDGE ELEMENTARY ACCESS IMPROVEMENTS, 2772 AMSTARDAM ROAD, WILIA HILLS, MD. C700 GRADING PLAN
 DRAWN BY: J. M. [unreadable]
 CHECKED BY: [unreadable]
 DATE: 11/11/11



Existing 2-Story
School Building
#2772 Amsterdam Road

Date: 08/11/2023 10:58am
 Project: RIVER RIDGE ELEMENTARY ACCESS IMPROVEMENTS
 Location: 2772 AMSTERDAM ROAD
 Scale: 1" = 40'-0"



| Area | Revision Description | Date | Drawn | Checked |
|------|----------------------|------|-------|---------|
| | | | | |
| | | | | |
| | | | | |
| | | | | |

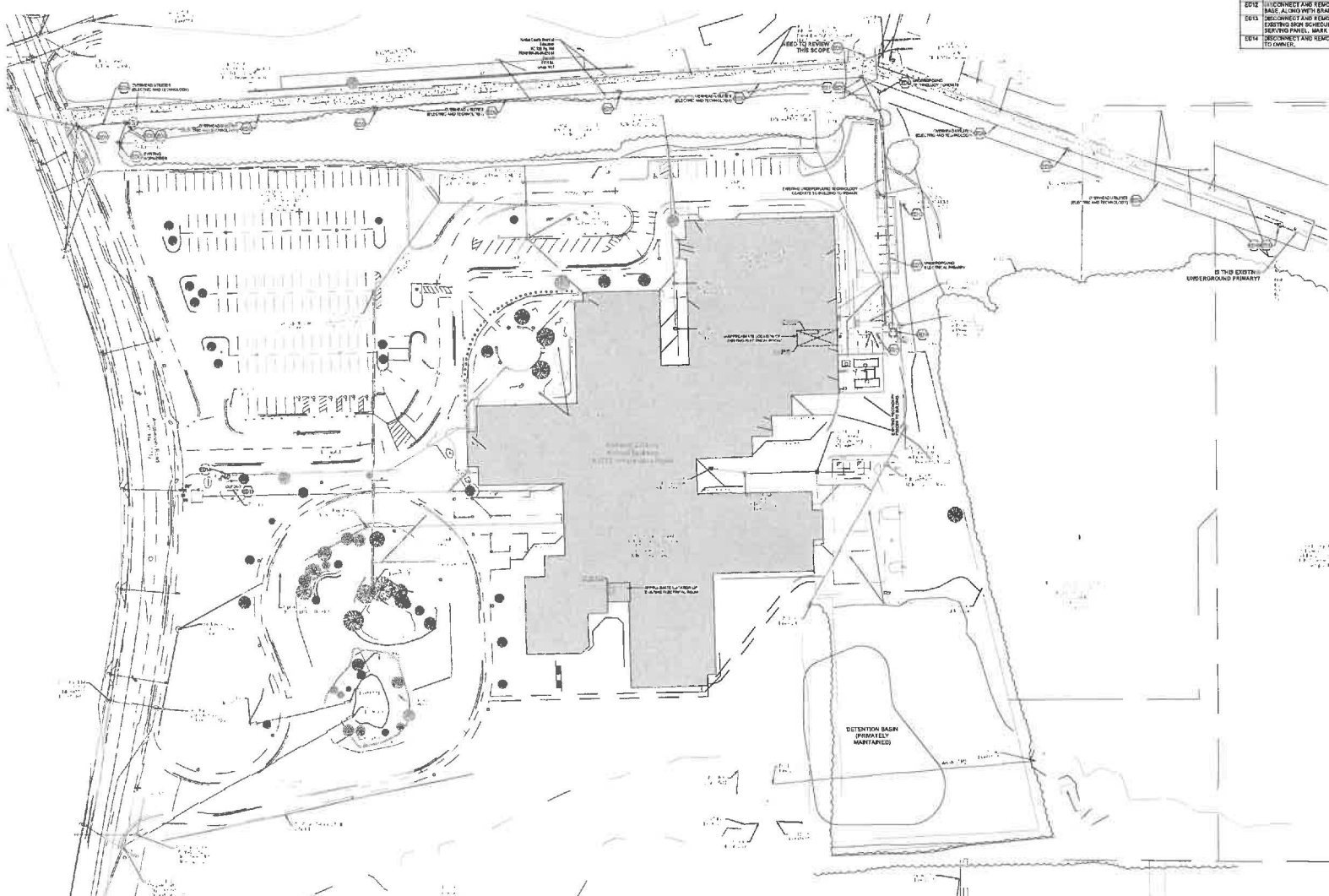
**RIVER RIDGE ELEMENTARY
ACCESS IMPROVEMENTS**
 2772 AMSTERDAM ROAD
 #2772
 BOB BOYD



Date: 08/11/23
 Project: RIB
 Location: MDVA
 Scale: 1/8"=1'-0"

C701

THIS DOCUMENT AND THE DATA HEREON IS UNCLASSIFIED AND IS NOT TO BE USED IN ANY MANNER THAT MAY BE INTERPRETED AS A STATEMENT OF THE PROJECT DESIGN TEAM'S LIABILITY FOR THE PROJECT. THE PROJECT DESIGN TEAM'S LIABILITY IS LIMITED TO THE PROJECT DESIGN TEAM'S LIABILITY FOR THE PROJECT. ALL RIGHTS RESERVED.



SITE UTILITY PLAN - DEMO

- TABOLED NOTES**
- E01 DISCONNECT AND REMOVE EXISTING UTILITY TRANSFORMER. MAINTAIN FOR RELOCATION TO NEW LOCATION. REFER TO NEW BLUE PLAN FOR ADDITIONAL INFORMATION. COORDINATE REQUIREMENTS AND PHASING WITH DRIVE CONTRACTOR.
 - E02 DISCONNECT AND REMOVE EXISTING SECONDARY FEEDER CONDUCTORS TO POWER BUILDING. MAINTAIN EXISTING SECONDARY CONDUIT FROM EXISTING UTILITY TRANSFORMER TO BUILDING FOR NEW SECONDARY FEEDER CONDUIT.
 - E03 DISCONNECT AND REMOVE HIGH VOLTAGE UTILITY POLE. COORDINATE PHASING WITH SERVICE UTILITY COMPANY. OBTAIN ENERGY SPECIFICATIONS AND ALTERNATES ALONG WITH UTILITY-SPECIFIC REQUIREMENTS.
 - E04 EXISTING UTILITY POLE TO BE REMOVED. VERIFY THE REQUIREMENTS TO BE DISCONNECTED. COORDINATE TEMPORARY FEED REQUIREMENTS THROUGH THE WORK PHASES.
 - E05 RELOCATE EXISTING UNDERGROUND UTILITY CONDUIT TO BE RELOCATED CLOSELY WITH KENTON COUNTY GOVERNMENT BY RESPECTIVE UTILITY. REFER TO NEW BLUE PLAN FOR NEW TECHNOLOGY FEED TO SCHOOL. REFER TO NEW BLUE PLAN FOR NEW MAIN BUS LOCATION. COORDINATE WORK WITH SERVICE UTILITY.
 - E06 DISCONNECT AND REMOVE EXISTING UTILITY CABINET AND COORDINATE EXISTING UNDERGROUND TECHNOLOGY FEED TO NEW TECHNOLOGY FEED TO SCHOOL. REFER TO NEW BLUE PLAN FOR NEW MAIN BUS LOCATION. COORDINATE WORK WITH SERVICE UTILITY.
 - E07 DISCONNECT AND REMOVE FEED FROM UNDERGROUND PRIMARY CABLES AND CONDUIT. COORDINATE WORK WITH SERVICE UTILITY.
 - E08 COORDINATE REPHASING OF EXISTING UNDERGROUND FEED WITH OWNER'S NEW UTILITY CABLE PATH LOCATION.
 - E09 DISCONNECT AND REMOVE EXISTING UNDERGROUND UTILITY CABLES. COORDINATE PHASING AND REPHASING WITH SERVICE UTILITIES.
 - E10 REFER EXISTING UNDERGROUND ALUMINUM PRIMARY FEEDS AT CONDUIT LEVEL. COORDINATE EXACT LOCATION AND PHASING WITH UTILITY AND OWNER. VERIFY EXISTING SPECIFICATIONS TO ALIGNMENT OF UTILITY AT UTILITY POLE. COORDINATE RECONNECTION AND/OR REFERRED WITH SPECTRUM.
 - E11 DISCONNECT AND REMOVE EXISTING UTILITY POLE. VERIFY THE POLE BASE ALONG WITH BRANCH WIRING BACK TO LAST ACTIVE DEVICE.
 - E12 DISCONNECT AND REMOVE EXISTING FLOOD LIGHTS ASSOCIATED WITH EXISTING SIGN SCHEDULED TO BE DEMOLISHED. REMOVE WIRING BACK TO SERVICE PANEL. MAKE BREAKERS AS SPACE.
 - E13 DISCONNECT AND REMOVE EXISTING CAR RIFTER PRO STATISTE. TURN OVER TO OWNER.



NOT FOR CONSTRUCTION

**Site Expansion Project
River Ridge Elementary School**
2772 Amsterdam Road
Villa Hills, KY 41071
BC# 24-173

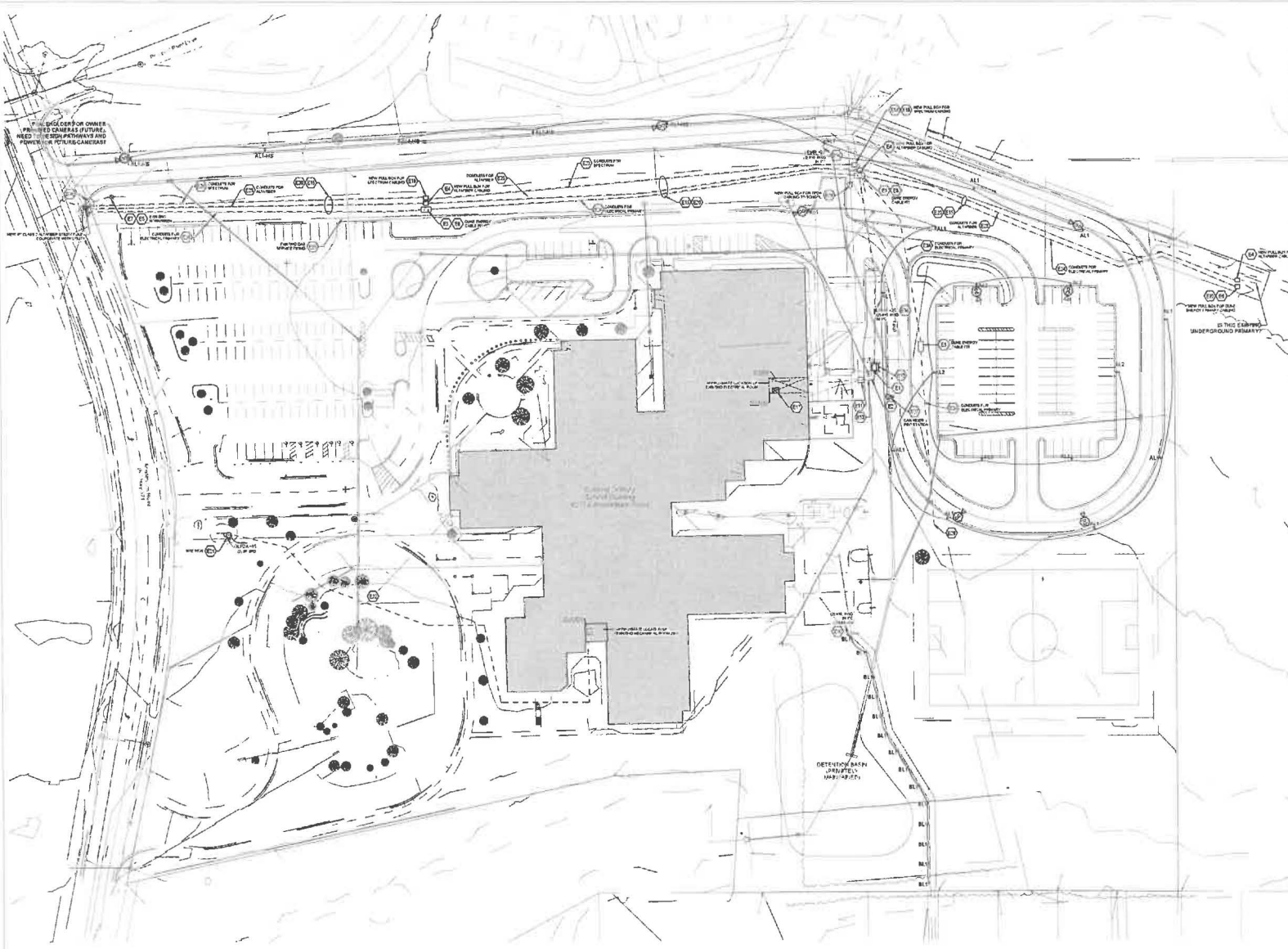
| NO. | DESCRIPTION | DATE |
|---------|-------------|-----------|
| 00 / CD | Approval | 1/24/2024 |

ELECTRICAL SITE UTILITY PLAN - DEMO

22-105

E-100

THE CONTRACTOR SHALL BE RESPONSIBLE FOR OBTAINING ALL NECESSARY PERMITS AND APPROVALS FROM THE LOCAL, STATE AND FEDERAL AGENCIES. THE CONTRACTOR SHALL BE RESPONSIBLE FOR OBTAINING ALL NECESSARY PERMITS AND APPROVALS FROM THE LOCAL, STATE AND FEDERAL AGENCIES. THE CONTRACTOR SHALL BE RESPONSIBLE FOR OBTAINING ALL NECESSARY PERMITS AND APPROVALS FROM THE LOCAL, STATE AND FEDERAL AGENCIES.



- TAGGED NOTES**
- E1 RELOCATE EXISTING UTILITY AND EQUIPMENT TRANSFORMER. PROVIDE CONCRETE PAD PER SHOWN ENERGY REQUIREMENTS. COORDINATE PLACING WITH GROUND ENERGY.
 - E2 PROVIDE NEW SECONDARY CONDUIT FROM PAD MOUNTED TRANSFORMER TO CONNECT TO EXISTING SECONDARY CONDUIT. MAKE AVAILABLE BY INSTALLATION. PROVIDE NEW SECONDARY FEEDER CABLES. REFER TO SHEET FOR CONDUIT UTILITY PAD MOUNTED TRANSFORMER LOCATION TO EXISTING PAD MOUNTED TRANSFORMER.
 - E3 PROVIDE 2" CONCRETE PAD WITH COVER PLATES FOR EXISTING CABLE.
 - E4 PROVIDE ALUMINUM 2" CHANNELS FULL BOX MOUNTED TO CEILING.
 - E5 COORDINATE REFERRED OF EXISTING POSITION WITH DONOR COUNTY DOCUMENTS RESPECTIVE OFFICE.
 - E6 PROVIDE FIBER OPTIC PULL BOX AND UTILITY APPROVED EQUAL.
 - E7 PROVIDE NEW POLE FOR 208V/120V/480V/277V. PROVIDE NEW SECONDARY CONDUIT TO EXISTING TRANSFORMER LOCATION. DESIGN INTENT IS TO REAL EXISTING UNDERGROUND TRANSFORMER LOCATION WITHOUT THE NEED TO REPLACE EXISTING TRANSFORMER BOX TO NEW LOCATION. DOOR PROGRAM.
 - E8 COORDINATE EXISTING LOCATION OF CABLE PULL BOX WITH OWNER AND SERVICE UTILITY. MAINTAIN 30" OR LESS CLEARANCE BETWEEN EXISTING POINTS.
 - E9 PROVIDE EXISTING UNDERGROUND TRANSFORMER PULL BOX WITH EXISTING GROUND. COORDINATE WITH CONDUIT OR SPACING REQUIREMENTS AND EXISTING UTILITY UTILITY.
 - E10 CONNECT NEW SECONDARY CONDUIT WITH EXISTING SECONDARY CONDUIT AT LOCATION OF EXISTING TRANSFORMER LOCATION. DESIGN INTENT IS TO REAL EXISTING UNDERGROUND TRANSFORMER LOCATION WITHOUT THE NEED TO REPLACE EXISTING TRANSFORMER BOX TO NEW LOCATION. DOOR PROGRAM.
 - E11 PROVIDE SUFFICIENT EXISTING NEW EXISTING SYSTEM PIPING, COORDINATE LEAKS AND RECORD WITH ARCHITECT WITH LOCAL UTILITY AND STRUCTURAL ENGINEER.
 - E12 PROVIDE SECONDARY FEEDER FROM EXISTING UTILITY PULL MOUNTED TRANSFORMER TO EXISTING TRANSFORMER LOCATION. PROVIDE 2" CONCRETE PAD WITH COVER PLATES FOR EXISTING CABLE.
 - E13 FIELD VERIFY THAT UNDERGROUND SERVICES FOR TECHNOLOGY AND ELECTRICAL UTILITY ARE NOT OCCUPYING A LENGTH BETWEEN POLLS EXISTING PULL POINTS.
 - E14 PROVIDE NEW BRANCH CIRCUIT FOR EXISTING POLE MOUNTED SERVICES. REFER BRANCH CIRCUIT THROUGH NEW CONTRACTOR FOR EXISTING PANEL CONTROL. WIRING TO THE CLOSET SYSTEM LOCATED IN MECHANICAL ROOM 300.
 - E15 PROVIDE NEW BRANCH CIRCUIT FOR EXISTING POLE MOUNTED SERVICES. REFER BRANCH CIRCUIT THROUGH NEW CONTRACTOR FOR EXISTING PANEL CONTROL. WIRING TO THE CLOSET SYSTEM LOCATED IN MECHANICAL ROOM 300.
 - E16 PROVIDE NEW BRANCH CIRCUIT FOR EXISTING POLE MOUNTED SERVICES. REFER BRANCH CIRCUIT THROUGH NEW CONTRACTOR FOR EXISTING PANEL CONTROL. WIRING TO THE CLOSET SYSTEM LOCATED IN MECHANICAL ROOM 300.
 - E17 PROVIDE NEW BRANCH CIRCUIT FOR EXISTING POLE MOUNTED SERVICES. REFER BRANCH CIRCUIT THROUGH NEW CONTRACTOR FOR EXISTING PANEL CONTROL. WIRING TO THE CLOSET SYSTEM LOCATED IN MECHANICAL ROOM 300.
 - E18 PROVIDE NEW BRANCH CIRCUIT FOR EXISTING POLE MOUNTED SERVICES. REFER BRANCH CIRCUIT THROUGH NEW CONTRACTOR FOR EXISTING PANEL CONTROL. WIRING TO THE CLOSET SYSTEM LOCATED IN MECHANICAL ROOM 300.
 - E19 PROVIDE NEW BRANCH CIRCUIT FOR EXISTING POLE MOUNTED SERVICES. REFER BRANCH CIRCUIT THROUGH NEW CONTRACTOR FOR EXISTING PANEL CONTROL. WIRING TO THE CLOSET SYSTEM LOCATED IN MECHANICAL ROOM 300.
 - E20 PROVIDE NEW BRANCH CIRCUIT FOR EXISTING POLE MOUNTED SERVICES. REFER BRANCH CIRCUIT THROUGH NEW CONTRACTOR FOR EXISTING PANEL CONTROL. WIRING TO THE CLOSET SYSTEM LOCATED IN MECHANICAL ROOM 300.
 - E21 PROVIDE NEW BRANCH CIRCUIT FOR EXISTING POLE MOUNTED SERVICES. REFER BRANCH CIRCUIT THROUGH NEW CONTRACTOR FOR EXISTING PANEL CONTROL. WIRING TO THE CLOSET SYSTEM LOCATED IN MECHANICAL ROOM 300.
 - E22 PROVIDE NEW BRANCH CIRCUIT FOR EXISTING POLE MOUNTED SERVICES. REFER BRANCH CIRCUIT THROUGH NEW CONTRACTOR FOR EXISTING PANEL CONTROL. WIRING TO THE CLOSET SYSTEM LOCATED IN MECHANICAL ROOM 300.
 - E23 PROVIDE NEW BRANCH CIRCUIT FOR EXISTING POLE MOUNTED SERVICES. REFER BRANCH CIRCUIT THROUGH NEW CONTRACTOR FOR EXISTING PANEL CONTROL. WIRING TO THE CLOSET SYSTEM LOCATED IN MECHANICAL ROOM 300.
 - E24 PROVIDE NEW BRANCH CIRCUIT FOR EXISTING POLE MOUNTED SERVICES. REFER BRANCH CIRCUIT THROUGH NEW CONTRACTOR FOR EXISTING PANEL CONTROL. WIRING TO THE CLOSET SYSTEM LOCATED IN MECHANICAL ROOM 300.
 - E25 PROVIDE NEW BRANCH CIRCUIT FOR EXISTING POLE MOUNTED SERVICES. REFER BRANCH CIRCUIT THROUGH NEW CONTRACTOR FOR EXISTING PANEL CONTROL. WIRING TO THE CLOSET SYSTEM LOCATED IN MECHANICAL ROOM 300.
 - E26 PROVIDE NEW BRANCH CIRCUIT FOR EXISTING POLE MOUNTED SERVICES. REFER BRANCH CIRCUIT THROUGH NEW CONTRACTOR FOR EXISTING PANEL CONTROL. WIRING TO THE CLOSET SYSTEM LOCATED IN MECHANICAL ROOM 300.

SITE UTILITY PLAN - NEW

ELECTRICAL - LUMINAIRE SCHEDULE

| TYPE | DESCRIPTION | MANUFACTURER | MODEL | WATTAGE | VOLTAGE | REMARKS |
|------|---|------------------|-------|---------|---------|---|
| AL1 | INDOOR LED AREA LIGHT, 2'x4' OR TO BE SELECTED BY ARCHITECT | LED MANUFACTURER | MODEL | 40W | 277V | PROVIDE ROUND STRAIGHT STEEL POLE - 22.5". REFER TO POLE BASE DETAIL 42.101 |
| AL2 | INDOOR LED AREA LIGHT, 2'x4' OR TO BE SELECTED BY ARCHITECT | LED MANUFACTURER | MODEL | 40W | 277V | PROVIDE ROUND STRAIGHT STEEL POLE - 22.5". REFER TO POLE BASE DETAIL 42.101 |
| AL3 | INDOOR LED AREA LIGHT, 2'x4' OR TO BE SELECTED BY ARCHITECT | LED MANUFACTURER | MODEL | 40W | 277V | PROVIDE ROUND STRAIGHT STEEL POLE - 22.5". REFER TO POLE BASE DETAIL 42.101 |
| AL4 | INDOOR LED AREA LIGHT, 2'x4' OR TO BE SELECTED BY ARCHITECT | LED MANUFACTURER | MODEL | 40W | 277V | PROVIDE ROUND STRAIGHT STEEL POLE - 22.5". REFER TO POLE BASE DETAIL 42.101 |
| AL5 | INDOOR LED AREA LIGHT, 2'x4' OR TO BE SELECTED BY ARCHITECT | LED MANUFACTURER | MODEL | 40W | 277V | PROVIDE ROUND STRAIGHT STEEL POLE - 22.5". REFER TO POLE BASE DETAIL 42.101 |

Kentucky 811
 CALL BEFORE YOU DIG
 1-800-343-7374

THE CONTRACTOR AND ALL SUBCONTRACTORS SHALL CONTACT KENTUCKY 811 PRIOR TO ANY CONSTRUCTION. THE CONTRACTOR OR SUBCONTRACTOR PERFORMING ANY TYPE OF EXCAVATION ON THIS PROJECT TO OBTAIN AN AUTHORIZATION NUMBER.



NOT FOR CONSTRUCTION

**Site Expansion Project
 River Ridge Elementary School**
 2772 Amsterdam Road
 Villa Hills, KY 41017
 BG# 24-173

NO. DESCRIPTION DATE
 DD / CD Approval 10/20/24

ELECTRICAL SITE UTILITY PLAN - NEW

22-105

E-101

