

**OLDHAM COUNTY BOARD OF EDUCATION**

**CONCERN**

Consider Revised BG-1 and Schematic Design documents for the Site/Access Improvements at Various Elementary Schools PH 2 Project.

**DISCUSSION**

On September 25, 2023 the Board of Education approved RossTarrant Architects for the Site/Access Improvements at Various Elementary Schools PH 2 Project.

The presentation slides show general modifications to each of the playgrounds which will include modified play surfaces, new sidewalks, site lighting, hardscaping, and playground equipment as needed per site inspections. A proposal of some features will be presented to each school for their input in February 2024. LaGrange ES is scheduled to be sent out for proposals in March 2024, followed by bidding the remainder of the sites in May 2024.


**RECOMMENDATION**

Approve the Revised BG-1 for the Site/Access Improvements at Various Elementary Schools PH 2 Project for submission to the Kentucky Department of Education, District Facilities Branch, Division of District Support and hereby authorize the Director of Facilities Management to execute the necessary documentation.

---

On a motion by \_\_\_\_\_, seconded by \_\_\_\_\_, the Board approved the Revised BG-1 for the Site/Access Improvements at Various Elementary Schools PH 2 Project for submission to the Kentucky Department of Education, District Facilities Branch, Division of District Support and hereby authorize the Director of Facilities Management to execute the necessary documentation.

  
\_\_\_\_\_  
*Suzanne Hundley, Board Chair*

  
\_\_\_\_\_  
*Jason Radford, Superintendent/Secretary*



Free Play Area

Demo Fence

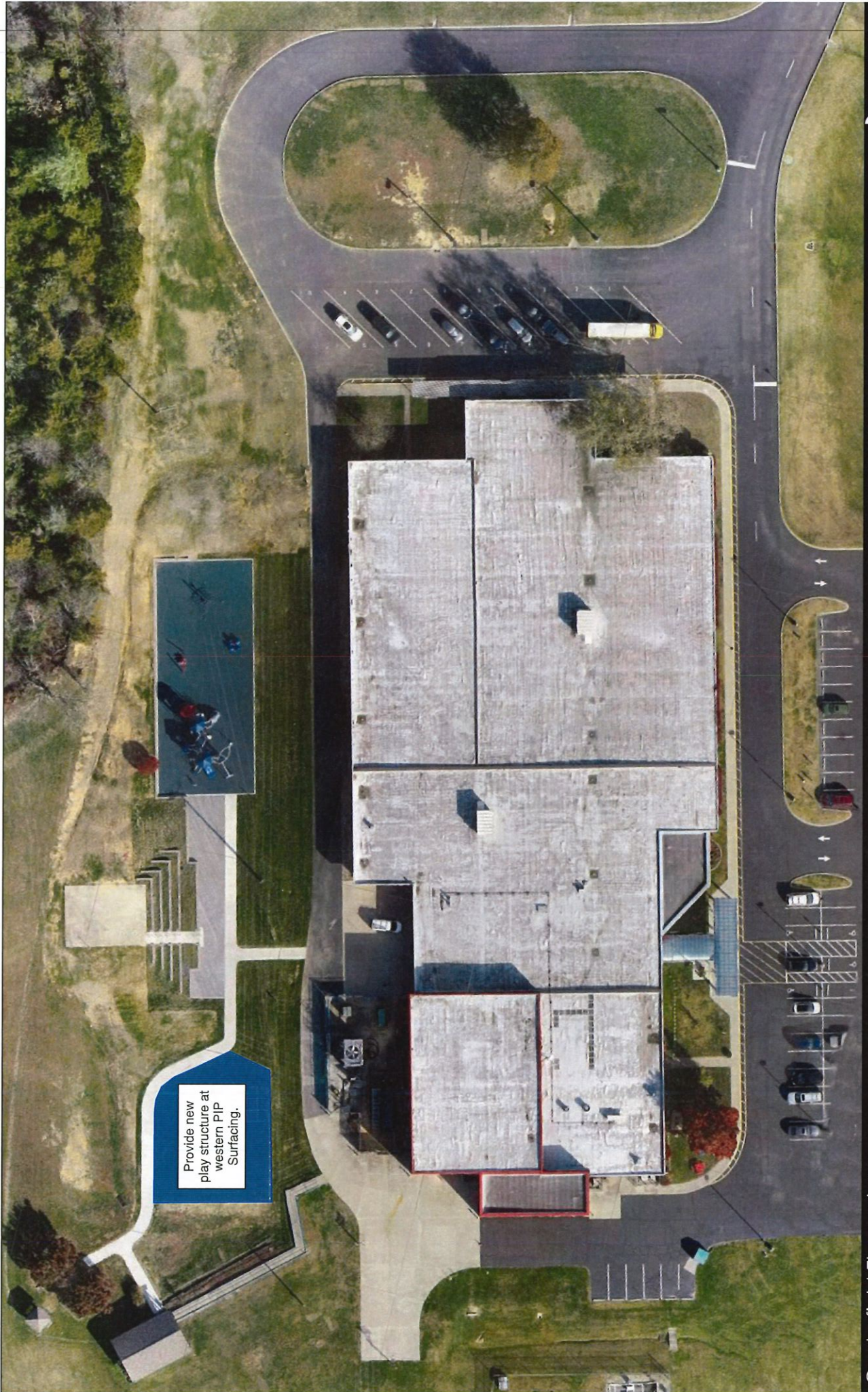
New PIP Surfacing and play equipment

New Basketball Goal

New paver plaza to expand outdoor learning.

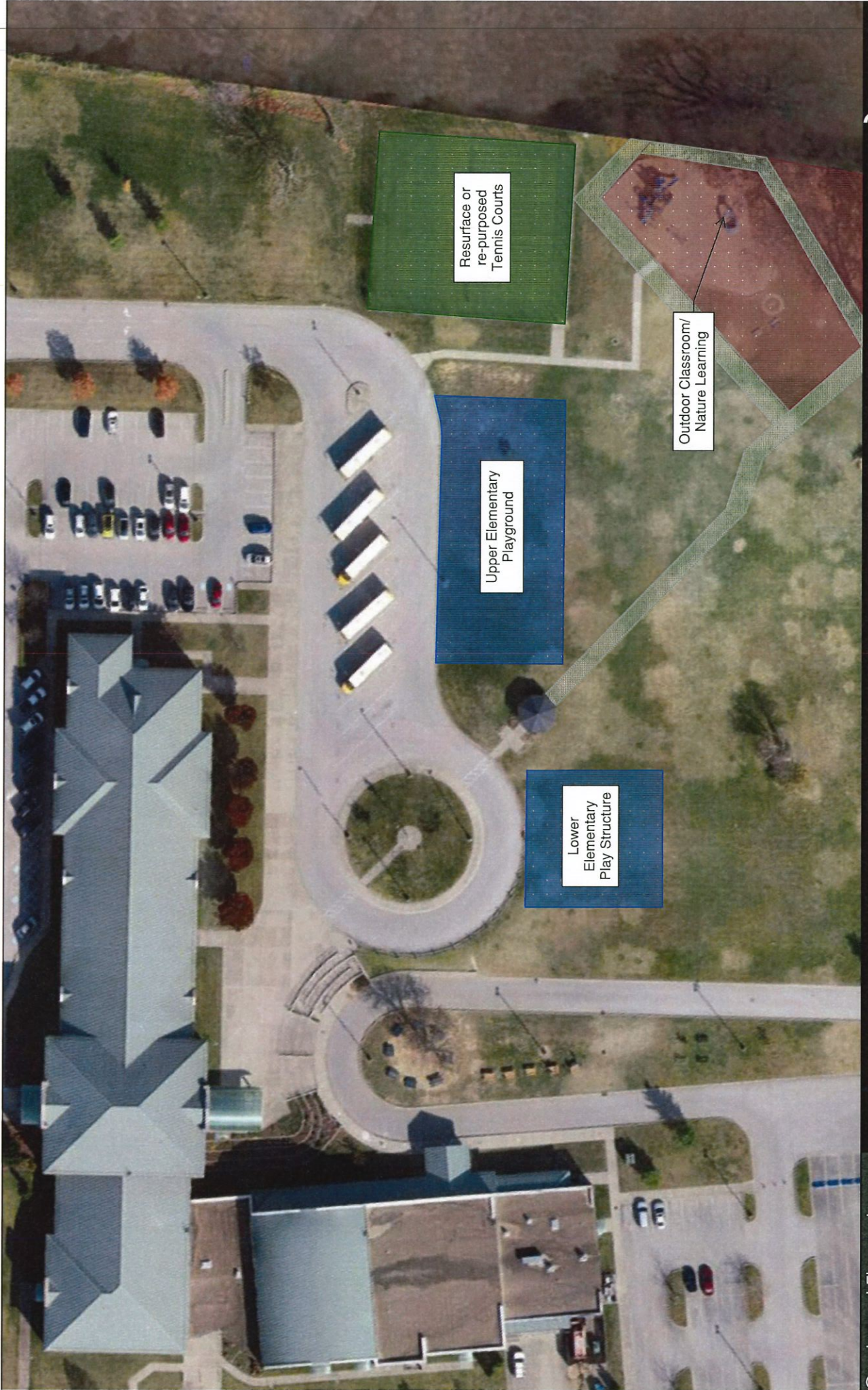
New Fencing





Provide new  
play structure at  
western PIP  
Surfacing.





Resurface or re-purposed Tennis Courts

Upper Elementary Playground

Lower Elementary Play Structure

Outdoor Classroom/ Nature Learning





Demo Structures

Explore turning mounds into PIP surfacing and preserve existing trees.

New Synthetic Turf Open Play Area

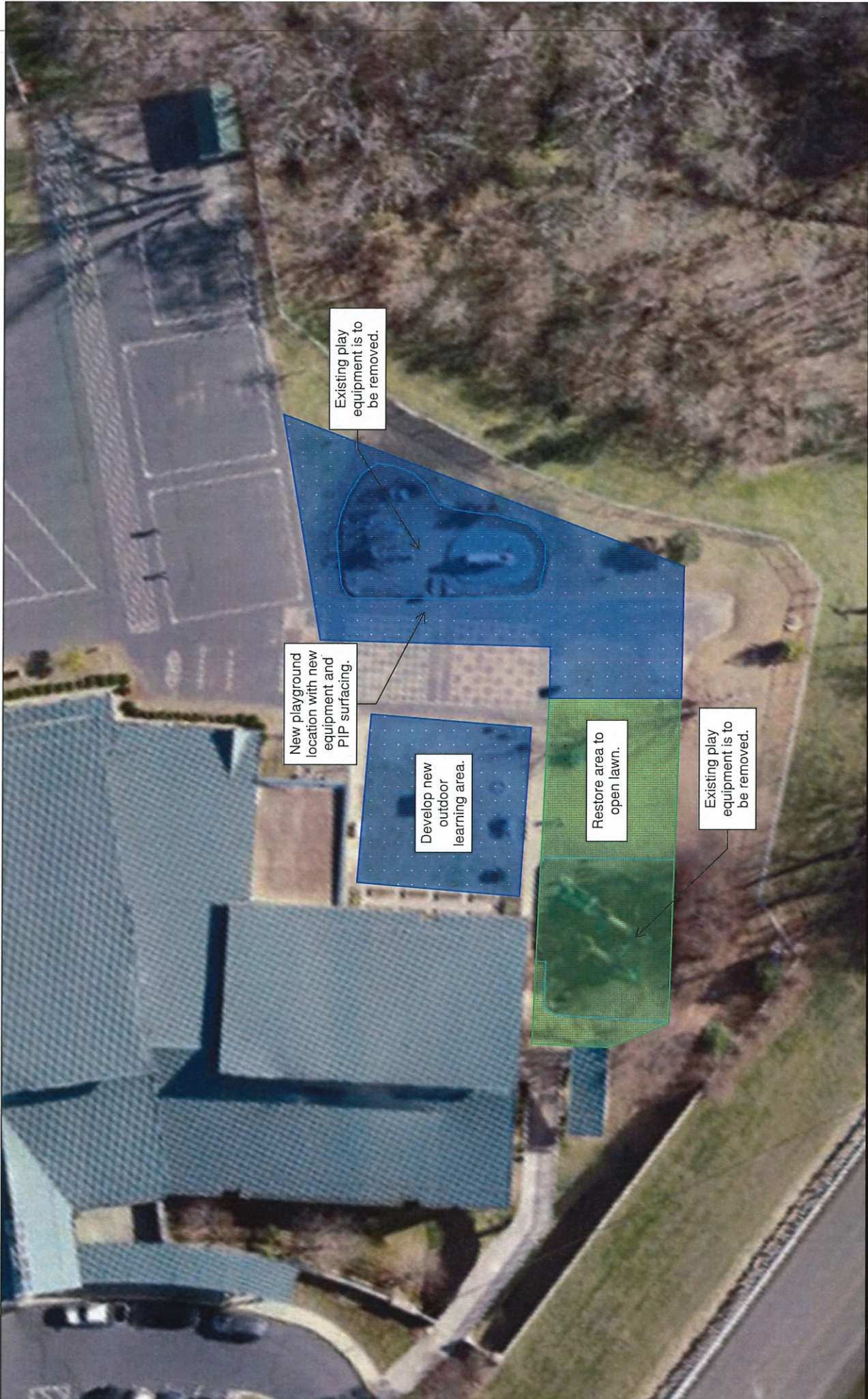
Remove basketball markings and possibly add new markings for two half court.

New Basketball Equipment

New Fence

Evaluate existing equipment and possibly replace components as necessary





Existing play equipment is to be removed.

New playground location with new equipment and PIP surfacing.

Develop new outdoor learning area.

Restore area to open lawn.

Existing play equipment is to be removed.

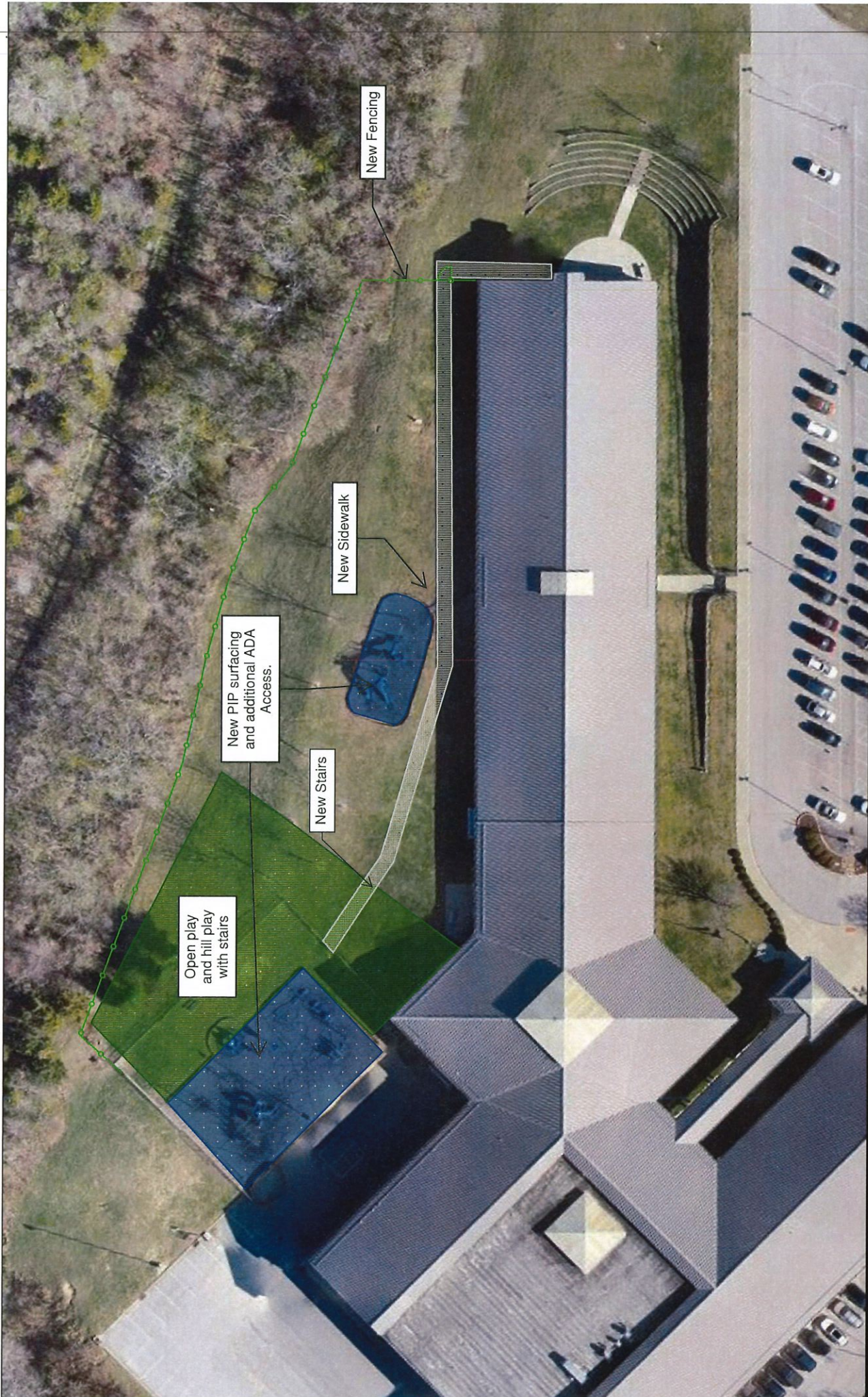




New Fencing

New PIP surfacing and review/update pathways between structures.





Open play and hill play with stairs

New PIP surfacing and additional ADA Access.

New Stairs

New Sidewalk

New Fencing