



AIA Document G731[®] – 2019

Change Order, Construction Manager as Adviser Edition

PROJECT: (name and address)
Central Hardin High School Addn/Renov

Cecilia, KY
OWNER: (name and address)
Hardin County Board of Education
65 W A Jenkins Road
Elizabethtown, KY 42701

CONTRACTOR: (name and address)
Alliance Corporatoin
P. O. Box 1480
Glasgow, KY 42142-1480

CONTRACT INFORMATION:
Contract For: BP 030-08
General Trades
Date: July 14, 2021
ARCHITECT: (name and address)
JRA Architects
3225 Summit Square Place, Suite
200
Lexington, KY 40509

CHANGE ORDER INFORMATION:
Change Order Number: 93

Date: January 8, 2024
CONSTRUCTION MANAGER: (name and address)
Alliance Corporation
116 E. College Street
Glasgow, KY 42141

THE CONTRACT IS CHANGED AS FOLLOWS:

(Insert a detailed description of the change and, if applicable, attach or reference specific exhibits. Also include agreed upon adjustments attributable to executed Construction Change Directives.)

Cost associated with bumping out columns for fireproofing per COP 48.

The original Contract Sum was	\$ 2,446,230.00
Net change by previously authorized Change Orders	\$ 49,140.27
The Contract Sum prior to this Change Order was	\$ 2,495,370.27
The Contract Sum will be increased by this Change Order in the amount of	\$ 1,010.85
The new Contract Sum including this Change Order will be	\$ 2,496,381.12

The Contract Time will be unchanged by Zero (0) days.
The Contractor's Work shall be substantially complete on

NOTE: This Change Order does not include adjustments to the Contract Sum or Guaranteed Maximum Price, or the Contract Time, that have been authorized by Construction Change Directive until the cost and time have been agreed upon by both the Owner and Contractor, in which case a Change Order is executed to supersede the Construction Change Directive.

NOT VALID UNTIL SIGNED BY THE ARCHITECT, CONSTRUCTION MANAGER, CONTRACTOR, AND OWNER.

JRA Architects

ARCHITECT (Firm name)

SIGNATURE
D. Robert Deal, President

PRINTED NAME AND TITLE

DATE:

Alliance Corporatoin

CONTRACTOR (Firm name)

SIGNATURE
Jake Scott

PRINTED NAME AND TITLE

DATE: 1/8/2023

Alliance Corporation

CONSTRUCTION MANAGER (Firm name)

SIGNATURE
Ryan Martin, Senior Project Manager

PRINTED NAME AND TITLE

DATE:

Hardin County Board of Education

OWNER (Firm name)

SIGNATURE
John Stith, COO

PRINTED NAME AND TITLE

DATE:



AIA Document G709 – 2018

Proposal Request

PROJECT: *(name and address)*
Hardin County Schools Central Hardin
High School
Elizabethtown, KY

CONTRACT INFORMATION:
Contract For: General Construction

Date: September 01, 2021

Architect's Project Number: 2019111
Proposal Request Number: 048

Proposal Request Date: 5/15/2023

OWNER: *(name and address)*
Hardin County Board of Education
65 W. A Jenkins Road
Elizabethtown, KY 42701

ARCHITECT: *(name and address)*
JRA Architects
3225 Summit Square Place Ste. 200
Lexington, KY 40509

CONTRACTOR: *(name and address)*
Alliance Corporation
116 E. College Street
Glasgow, KY 42141

The Owner requests an itemized proposal for changes to the Contract Sum and Contract Time for proposed modifications to the Contract Documents described herein. The Contractor shall submit this proposal within Zero (0) days or notify the Architect in writing of the anticipated date of submission.

(Insert a detailed description of the proposed modifications to the Contract Documents and, if applicable, attach or reference specific exhibits.)

At details areound the kitchen openings. The intumescent coating is applied to the column on the tile side, while the CMU provides the fireproofing on that side. With the intumescent coating, and the tile, it cannot be flush across. So the portion in front of the column needs to be furred out with studs and backer board in order to allow for the fireproofing and tile. See attached updated detail and elevation showing the bump out around the columns. Refer to ASI on tile information

THIS IS NOT A CHANGE ORDER, A CONSTRUCTION CHANGE DIRECTIVE, OR A DIRECTION TO PROCEED WITH THE WORK DESCRIBED IN THE PROPOSED MODIFICATIONS.

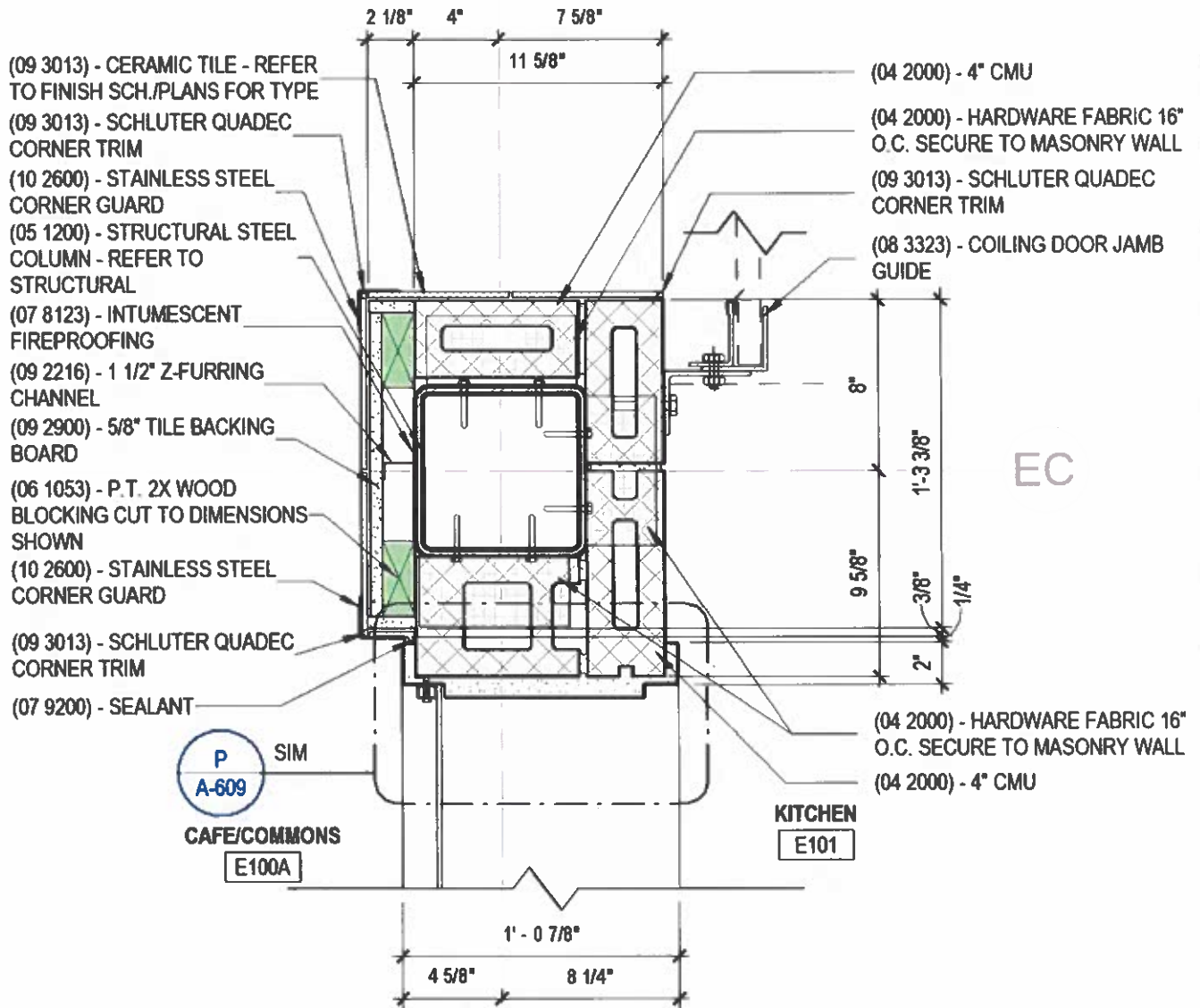
REQUESTED BY THE ARCHITECT:

D. Robert Deal, AIA, President
PRINTED NAME AND TITLE

NO.	DESCRIPTION	QTY	UNIT	PRICE	TOTAL
1	CEILING	1	SQ. FT.	1.00	1.00
2	FLOOR	1	SQ. FT.	1.00	1.00
3	WALL	1	SQ. FT.	1.00	1.00
4	DOOR	1	EA.	1.00	1.00
5	WINDOW	1	EA.	1.00	1.00
6	STAIR	1	EA.	1.00	1.00
7	MECHANICAL	1	EA.	1.00	1.00
8	ELECTRICAL	1	EA.	1.00	1.00
9	PLUMBING	1	EA.	1.00	1.00
10	PAINT	1	SQ. FT.	1.00	1.00
11	FINISH	1	SQ. FT.	1.00	1.00
12	MECHANICAL	1	EA.	1.00	1.00
13	ELECTRICAL	1	EA.	1.00	1.00
14	PLUMBING	1	EA.	1.00	1.00
15	PAINT	1	SQ. FT.	1.00	1.00
16	FINISH	1	SQ. FT.	1.00	1.00
17	MECHANICAL	1	EA.	1.00	1.00
18	ELECTRICAL	1	EA.	1.00	1.00
19	PLUMBING	1	EA.	1.00	1.00
20	PAINT	1	SQ. FT.	1.00	1.00
21	FINISH	1	SQ. FT.	1.00	1.00
22	MECHANICAL	1	EA.	1.00	1.00
23	ELECTRICAL	1	EA.	1.00	1.00
24	PLUMBING	1	EA.	1.00	1.00
25	PAINT	1	SQ. FT.	1.00	1.00
26	FINISH	1	SQ. FT.	1.00	1.00
27	MECHANICAL	1	EA.	1.00	1.00
28	ELECTRICAL	1	EA.	1.00	1.00
29	PLUMBING	1	EA.	1.00	1.00
30	PAINT	1	SQ. FT.	1.00	1.00
31	FINISH	1	SQ. FT.	1.00	1.00
32	MECHANICAL	1	EA.	1.00	1.00
33	ELECTRICAL	1	EA.	1.00	1.00
34	PLUMBING	1	EA.	1.00	1.00
35	PAINT	1	SQ. FT.	1.00	1.00
36	FINISH	1	SQ. FT.	1.00	1.00
37	MECHANICAL	1	EA.	1.00	1.00
38	ELECTRICAL	1	EA.	1.00	1.00
39	PLUMBING	1	EA.	1.00	1.00
40	PAINT	1	SQ. FT.	1.00	1.00
41	FINISH	1	SQ. FT.	1.00	1.00
42	MECHANICAL	1	EA.	1.00	1.00
43	ELECTRICAL	1	EA.	1.00	1.00
44	PLUMBING	1	EA.	1.00	1.00
45	PAINT	1	SQ. FT.	1.00	1.00
46	FINISH	1	SQ. FT.	1.00	1.00
47	MECHANICAL	1	EA.	1.00	1.00
48	ELECTRICAL	1	EA.	1.00	1.00
49	PLUMBING	1	EA.	1.00	1.00
50	PAINT	1	SQ. FT.	1.00	1.00
51	FINISH	1	SQ. FT.	1.00	1.00
52	MECHANICAL	1	EA.	1.00	1.00
53	ELECTRICAL	1	EA.	1.00	1.00
54	PLUMBING	1	EA.	1.00	1.00
55	PAINT	1	SQ. FT.	1.00	1.00
56	FINISH	1	SQ. FT.	1.00	1.00
57	MECHANICAL	1	EA.	1.00	1.00
58	ELECTRICAL	1	EA.	1.00	1.00
59	PLUMBING	1	EA.	1.00	1.00
60	PAINT	1	SQ. FT.	1.00	1.00
61	FINISH	1	SQ. FT.	1.00	1.00
62	MECHANICAL	1	EA.	1.00	1.00
63	ELECTRICAL	1	EA.	1.00	1.00
64	PLUMBING	1	EA.	1.00	1.00
65	PAINT	1	SQ. FT.	1.00	1.00
66	FINISH	1	SQ. FT.	1.00	1.00
67	MECHANICAL	1	EA.	1.00	1.00
68	ELECTRICAL	1	EA.	1.00	1.00
69	PLUMBING	1	EA.	1.00	1.00
70	PAINT	1	SQ. FT.	1.00	1.00
71	FINISH	1	SQ. FT.	1.00	1.00
72	MECHANICAL	1	EA.	1.00	1.00
73	ELECTRICAL	1	EA.	1.00	1.00
74	PLUMBING	1	EA.	1.00	1.00
75	PAINT	1	SQ. FT.	1.00	1.00
76	FINISH	1	SQ. FT.	1.00	1.00
77	MECHANICAL	1	EA.	1.00	1.00
78	ELECTRICAL	1	EA.	1.00	1.00
79	PLUMBING	1	EA.	1.00	1.00
80	PAINT	1	SQ. FT.	1.00	1.00
81	FINISH	1	SQ. FT.	1.00	1.00
82	MECHANICAL	1	EA.	1.00	1.00
83	ELECTRICAL	1	EA.	1.00	1.00
84	PLUMBING	1	EA.	1.00	1.00
85	PAINT	1	SQ. FT.	1.00	1.00
86	FINISH	1	SQ. FT.	1.00	1.00
87	MECHANICAL	1	EA.	1.00	1.00
88	ELECTRICAL	1	EA.	1.00	1.00
89	PLUMBING	1	EA.	1.00	1.00
90	PAINT	1	SQ. FT.	1.00	1.00
91	FINISH	1	SQ. FT.	1.00	1.00
92	MECHANICAL	1	EA.	1.00	1.00
93	ELECTRICAL	1	EA.	1.00	1.00
94	PLUMBING	1	EA.	1.00	1.00
95	PAINT	1	SQ. FT.	1.00	1.00
96	FINISH	1	SQ. FT.	1.00	1.00
97	MECHANICAL	1	EA.	1.00	1.00
98	ELECTRICAL	1	EA.	1.00	1.00
99	PLUMBING	1	EA.	1.00	1.00
100	PAINT	1	SQ. FT.	1.00	1.00
101	FINISH	1	SQ. FT.	1.00	1.00
102	MECHANICAL	1	EA.	1.00	1.00
103	ELECTRICAL	1	EA.	1.00	1.00
104	PLUMBING	1	EA.	1.00	1.00
105	PAINT	1	SQ. FT.	1.00	1.00
106	FINISH	1	SQ. FT.	1.00	1.00
107	MECHANICAL	1	EA.	1.00	1.00
108	ELECTRICAL	1	EA.	1.00	1.00
109	PLUMBING	1	EA.	1.00	1.00
110	PAINT	1	SQ. FT.	1.00	1.00
111	FINISH	1	SQ. FT.	1.00	1.00
112	MECHANICAL	1	EA.	1.00	1.00
113	ELECTRICAL	1	EA.	1.00	1.00
114	PLUMBING	1	EA.	1.00	1.00
115	PAINT	1	SQ. FT.	1.00	1.00
116	FINISH	1	SQ. FT.	1.00	1.00
117	MECHANICAL	1	EA.	1.00	1.00
118	ELECTRICAL	1	EA.	1.00	1.00
119	PLUMBING	1	EA.	1.00	1.00
120	PAINT	1	SQ. FT.	1.00	1.00
121	FINISH	1	SQ. FT.	1.00	1.00
122	MECHANICAL	1	EA.	1.00	1.00
123	ELECTRICAL	1	EA.	1.00	1.00
124	PLUMBING	1	EA.	1.00	1.00
125	PAINT	1	SQ. FT.	1.00	1.00
126	FINISH	1	SQ. FT.	1.00	1.00
127	MECHANICAL	1	EA.	1.00	1.00
128	ELECTRICAL	1	EA.	1.00	1.00
129	PLUMBING	1	EA.	1.00	1.00
130	PAINT	1	SQ. FT.	1.00	1.00
131	FINISH	1	SQ. FT.	1.00	1.00
132	MECHANICAL	1	EA.	1.00	1.00
133	ELECTRICAL	1	EA.	1.00	1.00
134	PLUMBING	1	EA.	1.00	1.00
135	PAINT	1	SQ. FT.	1.00	1.00
136	FINISH	1	SQ. FT.	1.00	1.00
137	MECHANICAL	1	EA.	1.00	1.00
138	ELECTRICAL	1	EA.	1.00	1.00
139	PLUMBING	1	EA.	1.00	1.00
140	PAINT	1	SQ. FT.	1.00	1.00
141	FINISH	1	SQ. FT.	1.00	1.00
142	MECHANICAL	1	EA.	1.00	1.00
143	ELECTRICAL	1	EA.	1.00	1.00
144	PLUMBING	1	EA.	1.00	1.00
145	PAINT	1	SQ. FT.	1.00	1.00
146	FINISH	1	SQ. FT.	1.00	1.00
147	MECHANICAL	1	EA.	1.00	1.00
148	ELECTRICAL	1	EA.	1.00	1.00
149	PLUMBING	1	EA.	1.00	1.00
150	PAINT	1	SQ. FT.	1.00	1.00
151	FINISH	1	SQ. FT.	1.00	1.00
152	MECHANICAL	1	EA.	1.00	1.00
153	ELECTRICAL	1	EA.	1.00	1.00
154	PLUMBING	1	EA.	1.00	1.00
155	PAINT	1	SQ. FT.	1.00	1.00
156	FINISH	1	SQ. FT.	1.00	1.00
157	MECHANICAL	1	EA.	1.00	1.00
158	ELECTRICAL	1	EA.	1.00	1.00
159	PLUMBING	1	EA.	1.00	1.00
160	PAINT	1	SQ. FT.	1.00	1.00
161	FINISH	1	SQ. FT.	1.00	1.00
162	MECHANICAL	1	EA.	1.00	1.00
163	ELECTRICAL	1	EA.	1.00	1.00
164	PLUMBING	1	EA.	1.00	1.00
165	PAINT	1	SQ. FT.	1.00	1.00
166	FINISH	1	SQ. FT.	1.00	1.00
167	MECHANICAL	1	EA.	1.00	1.00
168	ELECTRICAL	1	EA.	1.00	1.00
169	PLUMBING	1	EA.	1.00	1.00
170	PAINT	1	SQ. FT.	1.00	1.00
171	FINISH	1	SQ. FT.	1.00	1.00
172	MECHANICAL	1	EA.	1.00	1.00
173	ELECTRICAL	1	EA.	1.00	1.00
174	PLUMBING	1	EA.	1.00	1.00
175	PAINT	1	SQ. FT.	1.00	1.00
176	FINISH	1	SQ. FT.	1.00	1.00
177	MECHANICAL	1	EA.	1.00	1.00
178	ELECTRICAL	1	EA.	1.00	1.00
179	PLUMBING	1	EA.	1.00	1.00
180	PAINT	1	SQ. FT.	1.00	1.00
181	FINISH	1	SQ. FT.	1.00	1.00
182	MECHANICAL	1	EA.	1.00	1.00
183	ELECTRICAL	1	EA.	1.00	1.00
184	PLUMBING	1	EA.	1.00	1.00
185	PAINT	1	SQ. FT.	1.00	1.00
186	FINISH	1	SQ. FT.	1.00	1.00
187	MECHANICAL	1	EA.	1.00	1.00
188	ELECTRICAL	1	EA.	1.00	1.00
189	PLUMBING	1	EA.	1.00	1.00
190	PAINT	1	SQ. FT.	1.00	1.00
191	FINISH	1	SQ. FT.	1.00	1.00
192	MECHANICAL	1	EA.	1.00	1.00
193	ELECTRICAL	1	EA.	1.00	1.00
194	PLUMBING	1	EA.	1.00	1.00
195	PAINT	1	SQ. FT.	1.00	1.00
196	FINISH	1	SQ. FT.	1.00	1.00
197	MECHANICAL	1	EA.	1.00	1.00
198	ELECTRICAL	1	EA.	1.00	1.00
199	PLUMBING	1	EA.	1.00	1.00
200	PAINT	1	SQ. FT.	1.00	1.00
201	FINISH	1	SQ. FT.	1.00	1.00
202	MECHANICAL	1	EA.	1.00	

6

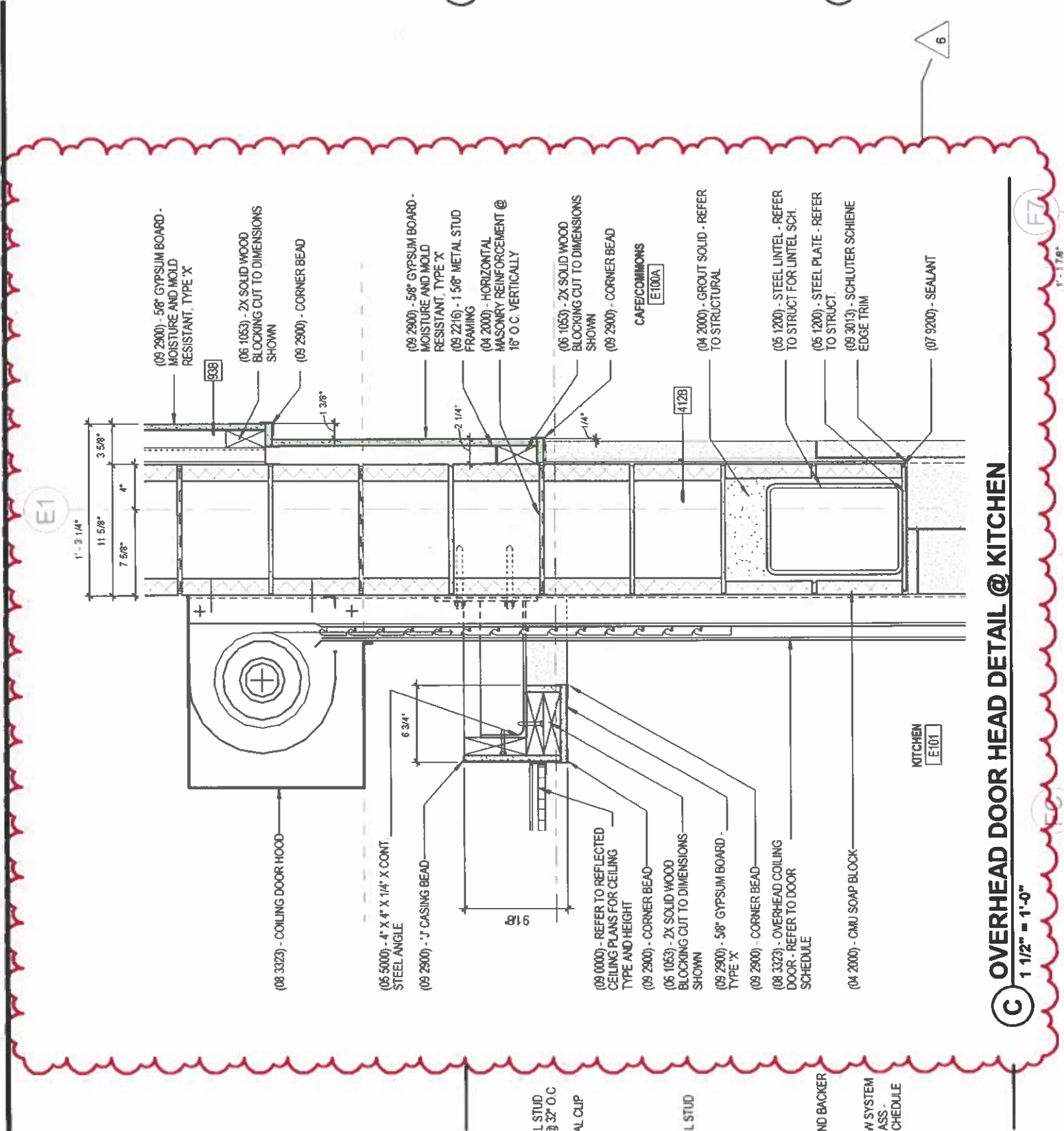
E1



H

PLAN DETAIL - KITCHEN ENTRANCE

1 1/2" = 1'-0"



E1

F7

C OVERHEAD DOOR HEAD DETAIL @ KITCHEN

1 1/2" = 1'-0"

1'-11/8"

6

L STUD
3/32" O.C.

AL CLIP

L STUD

ND BACKER

N SYSTEM
ASS.
CHEDULE

- (08 3323) - COILING DOOR HOOD
- (05 5000) - 4" X 4" X 1/4" X CONT. STEEL ANGLE
- (09 2900) - J CASING BEAD
- (09 0000) - REFER TO REFLECTED CEILING PLANS FOR CEILING TYPE AND HEIGHT
- (09 2900) - CORNER BEAD
- (06 1053) - 2X SOLID WOOD BLOCKING CUT TO DIMENSIONS SHOWN
- (09 2900) - 5/8" GYPSUM BOARD TYPE 'X'
- (09 2900) - CORNER BEAD
- (08 3323) - OVERHEAD COILING DOOR - REFER TO DOOR SCHEDULE
- (04 2000) - CMU SOAP BLOCK
- (09 2900) - 5/8" GYPSUM BOARD - MOISTURE AND MOLD RESISTANT, TYPE 'X'
- (06 1053) - 2X SOLID WOOD BLOCKING CUT TO DIMENSIONS SHOWN
- (09 2900) - CORNER BEAD
- (04 2000) - HORIZONTAL MASONRY REINFORCEMENT @ 16" O.C. VERTICALLY
- (06 1053) - 2X SOLID WOOD BLOCKING CUT TO DIMENSIONS SHOWN
- (09 2900) - CORNER BEAD
- CAFE/COMMONS E100A
- (04 2000) - GROUT SOLID - REFER TO STRUCTURAL
- (05 1200) - STEEL LINTEL - REFER TO STRUCT FOR LINTEL SCH.
- (05 1200) - STEEL PLATE - REFER TO STRUCT.
- (09 3013) - SCHLUTER SCHIENE EDGE TRIM
- (07 9200) - SEALANT

KITCHEN
E101

FACPAC Contract Change Order Supplemental Information Form (Ref# 59261)

Form Status: Saved

Tier 1 Project: CHHS Renovation Phase 1

BG Number: 20-136

District: Hardin County (HB678)

Status: Active

Phase: Project Initiation (View Checklist)

Contract: Alliance Corporation, 0030, General Trades

Type: CM Bid Package

Proposed

Change Order Number	8
Time Extension Required	No
Date Of Change Order	1/8/2024
Change Order Amount To Date	Increase

Construction Contingency

Calculations below are project wide. Remaining negative Construction Contingency may require the submission of a revised BG1.

Current Approved Amount	\$3,254,314.84
Net Approved COs	\$199,167.04
Remaining After Approved COs	\$3,055,147.80
Net All COs	\$223,193.13
Remaining After All COs	\$3,031,121.71

This Requested Change Order Amount \$1,010.85

+/-

Change In A/E Fee This Change Order \$47.51

+/-

Change In CM Fee This Change Order \$0.00

+/-

Remaining Construction Contingency \$3,031,121.71

Balance

Contract Change Requested By Architect/Engineer

Contract Change Reason Code Expansion of Scope

Change Order Description And Justification

Cost associated with bumping out columns for fireproofing per COP 48.

Cost Benefit To Owner

The cost of this change order has been reviewed and determined to be reasonable.

Contract unit prices have been utilized No
to support the cost associated with this
change order.

Detailed Cost Breakdown

Contract unit prices have not been utilized, provide a detailed cost breakdown which separates labor, material, profit and overhead.

Detail Item	Amount	Percent of Total
Labor	\$720.00	71.23%
Materials	\$141.76	14.02%
Profit and Overhead	\$129.27	12.79%
Bond Insurance	\$19.82	1.96%
Cost Breakdown Total:	\$1,010.85	

Cost for this Change Order supported by an alternate bid or competitive price quote

Explain Why

Executed contract with contractor.

**Change Order Supplemental Information Form Signature
Page (Online Form Ref# 59261)**

Architect

Date

Construction Manager

Date

Finance Officer

Date

Local Board of Education Designee

Date