

KENTON COUNTY SCHOOL DISTRICT

Instructional Resource Update

January 8, 2024



How Does the Use of the Resource Impact Student Achievement in a Measurable Way Over Time?

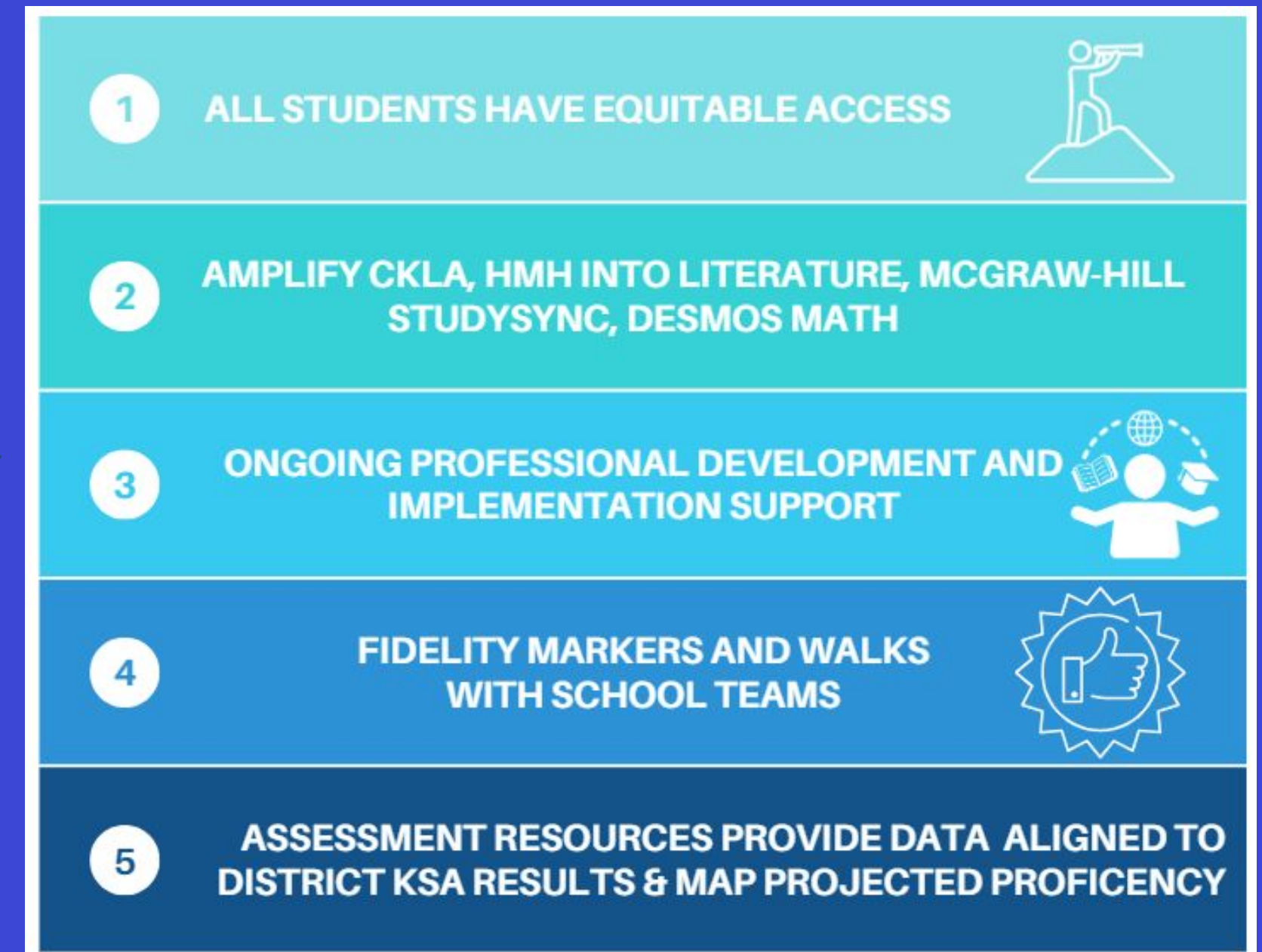
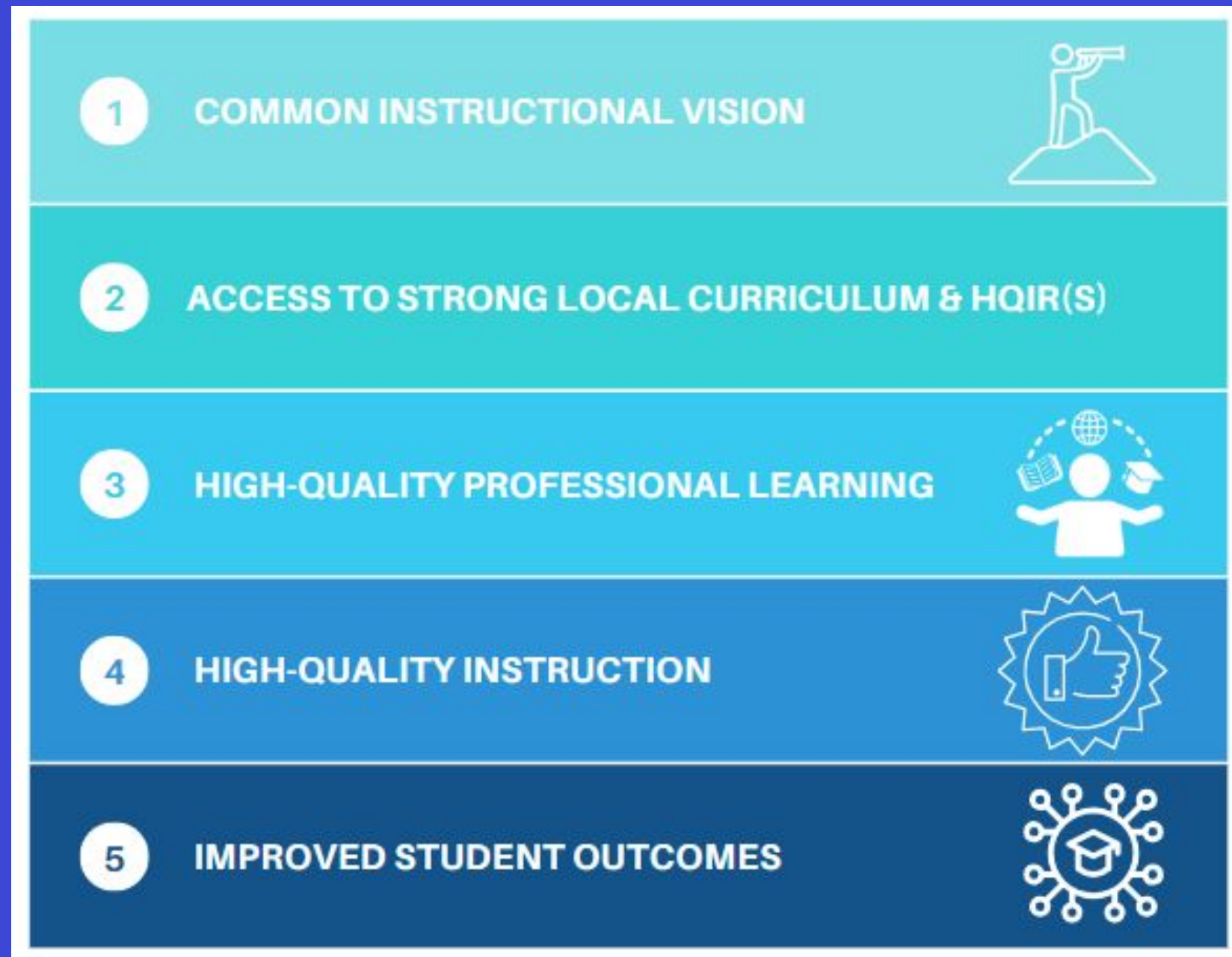
When schools and districts across the state develop and implement a coherent, high-quality curriculum grounded in the Kentucky Academic Standards, measure learning through a system of balanced assessment, and support teachers with high-quality instructional resources and evidence-based instructional practices, they provide a more equitable environment for all. As educators across a school or district work together to implement the local curriculum, it helps ensure each student has equal access to the same content, knowledge and/or skills regardless of teacher or school they attend.

Ky. Department of Education Model Curriculum Framework

- ❖ Through a collaborative and thorough review, the need for comprehensive reading and math resources was identified as a priority last school year.
- ❖ Board approved a High Quality Comprehensive Instructional Resource Five-Year Plan in February 2023.
- ❖ The district purchased comprehensive, high quality instructional resources in Literacy K-12 and in Numeracy Grade 6-Algebra 1.
- ❖ A comprehensive high quality resource eliminates time that our teachers were spending on searching for materials to teach the standards. Additionally, if high quality instructional resources are implemented with fidelity and coupled with high quality instruction, 80% of grade level standards should be met.
- ❖ This process is a large investment in funds, time, and professional learning. We are four months into implementation of these new resources, and the response and feedback from our principals, teachers, students, and parents has broadly been positive. The next two slides provide updates on the initial implementation of this work.

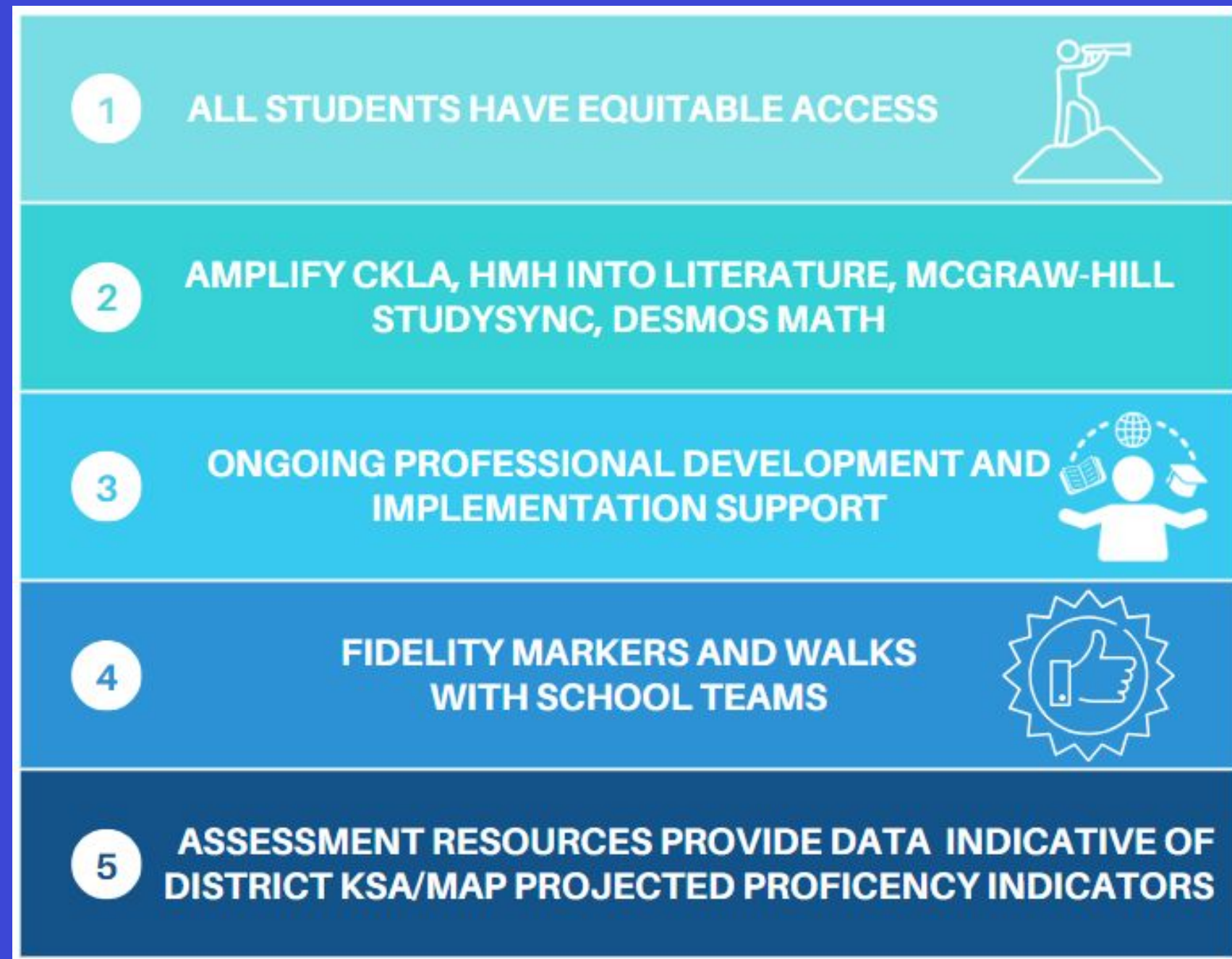
Strengthening Tier 1 Instruction

From Vision to Impact



Strengthening Tier 1 Instruction

From Impact to Data



- **Summer - Initial Resource PD**
 - 115 hours, 835 participants
- **Ongoing**
 - 50 hours, 388 participants - YTD
 - Job-embedded professional learning
 - Differentiated support for teachers and administrators
 - Boost sessions throughout the year
- **Needs assessment to determine professional learning needs for 24-25**
- **Fall Fidelity**
 - Amplify CKLA
 - Skills: $85/110 = 77\%$
 - Knowledge: $155/184 = 84\%$
 - Additional Targeted Walks: 55
 - HMH Into Literature
 - $21/25 = 84\%$
 - Additional Target Walks: 28
 - McGraw-Hill StudySync
 - $25/32 = 78\%$
 - Additional Targeted Walks: 26
 - Desmos Math
 - $33/37 = 89\%$
 - Additional Targeted Walks: 19

Why Early Literacy?

❖ To what degree are all KCSD students reading proficiently at grade level in K-8?

- ❑ % of K-5 students scoring at or above the 60th percentile (projected proficiency) on universal screener- 55.90%
- ❑ % of 6-8 students scoring at or above the 60th percentile (projected proficiency) on universal screener- 50%

❖ Pre Pandemic Proficiency Levels 18-19:

- ❑ 3-5 63.2%
- ❑ 6-8 63.9%
- ❑ 10 54.1%

❖ Proficiency Levels 22-23:

- ❑ 3-5 59%
- ❑ 6-8 52%
- ❑ 10 44%

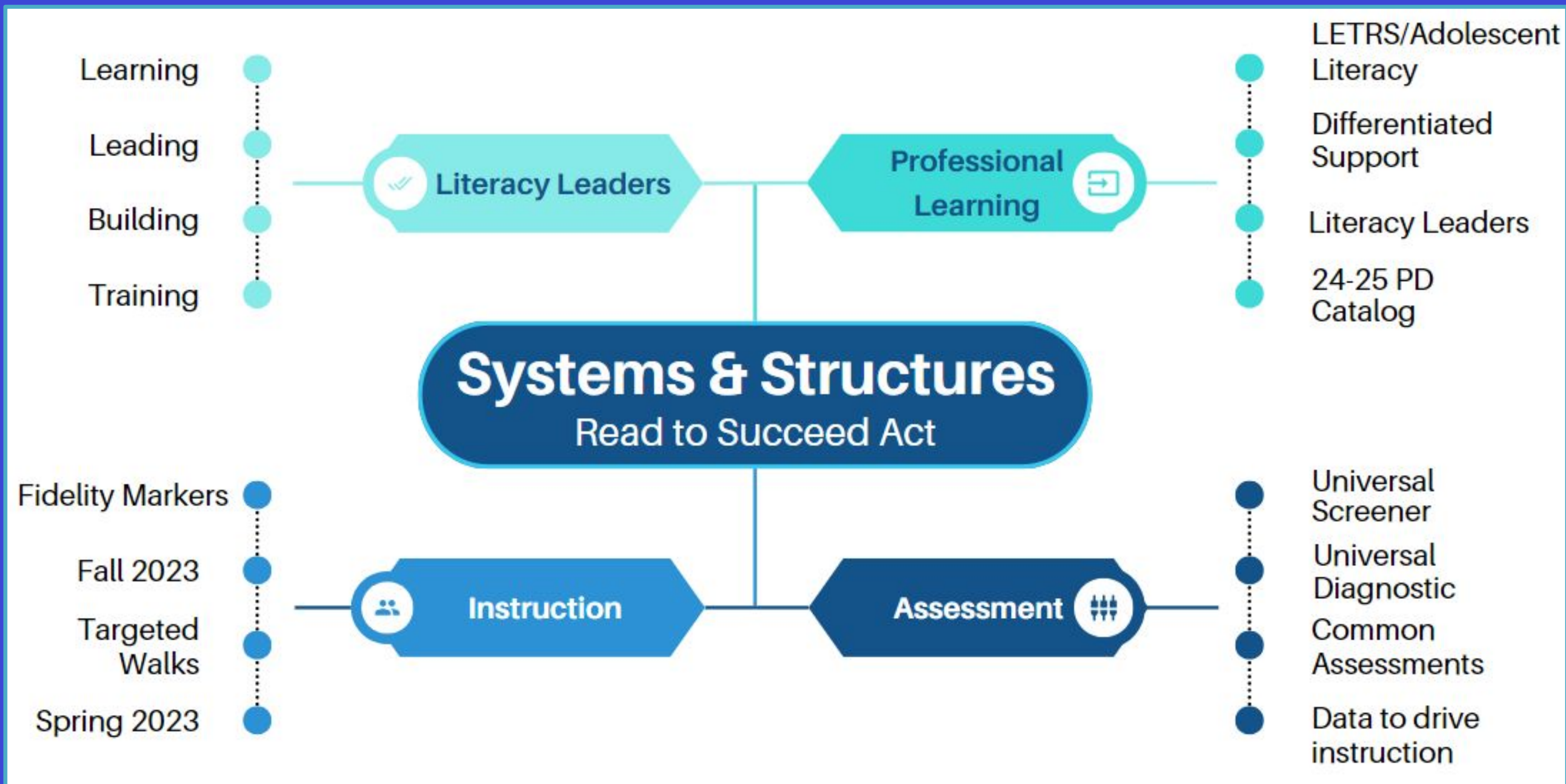
❖ For consecutive years KCSD students achieve above the state percentages for proficiency. Most recent data from 22-23:

- ❑ 3-5 +12%
- ❑ 6-8 +7%

A student's ability to read is a critical predictor of success both in education and life. Our students must have the opportunity to gain and strengthen this skill, and our teachers have to be equipped and empowered in literacy instruction to best support their students as we know that **our teachers are the most important factor in student success**. As a district, we are taking comprehensive actions to improve literacy outcomes for all students.

KCSD Literacy Initiative

Shifting from Balanced to Structured Literacy



Resources



- Instructional Literacy Shifts - Administrator Edition - Presented to K-5 principals last April.
- Science of Reading for Beginners - Presented at PD session this summer.
- Leading District Wide Instructional Literacy Shifts - Presented at the Kentucky Reading Association conference in September.
- Module 1-KCSD Secondary Literacy Project- Teachers systematically leading important literacy topics in their buildings