

Marion County Middle School - Partial Window Replacment

Lebanon, Kentucky
for the

Marion County Board of Education

755 East Main Street Lebanon, Kentucky 40033

p 270.692.3721

BG # 24-120

RTA # 23043

INDEX OF DRAWINGS	
A4.1	BUILDING ELEVATIONS
A4.2	BUILDING ELEVATIONS
A4.3	BUILDING ELEVATIONS



101 old lafayette avenue
lexington, kentucky 40502
p 859.254.4018
www.rosstarrant.com

COVER SHEET
MARION COUNTY MIDDLE SCHOOL PARTIAL WINDOW REPLACEMENT
FOR:
MARION COUNTY BOARD OF EDUCATION
LEBANON, KENTUCKY

enhancing education through great design

PROJECT SITE ADDRESS:

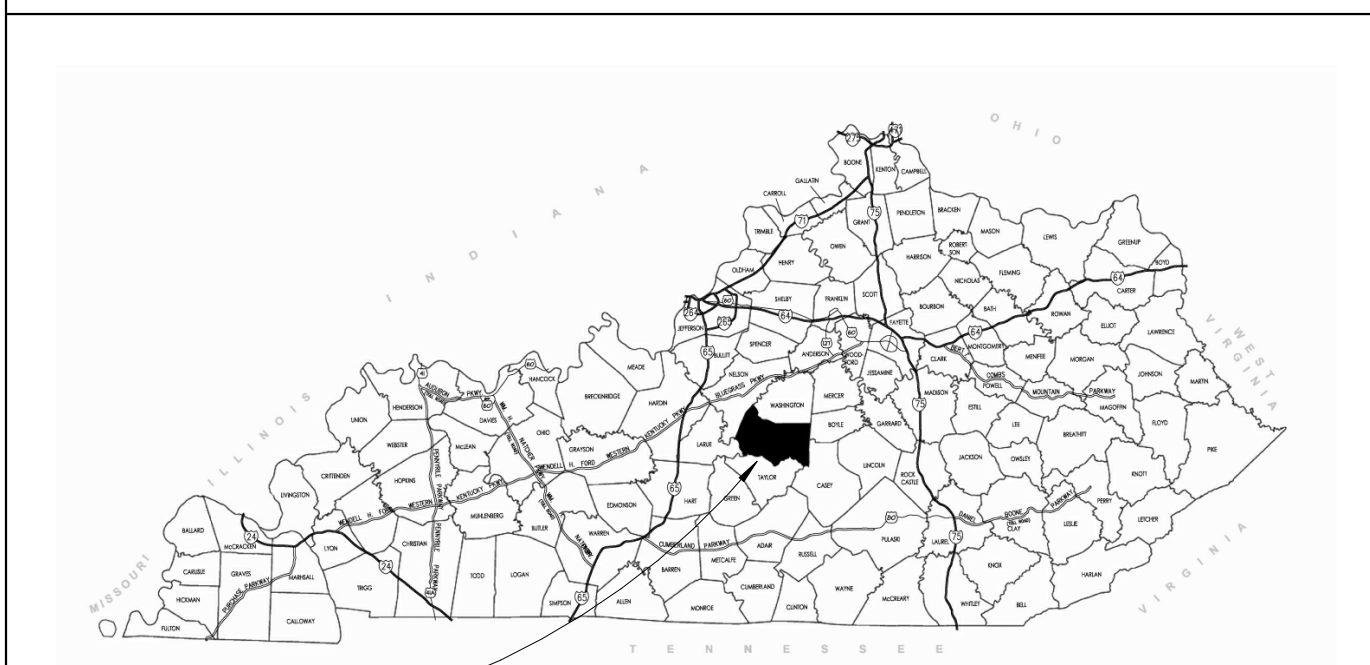
1155 State Highway 327
Lebanon, Kentucky
40033

VICINITY MAP



SITE

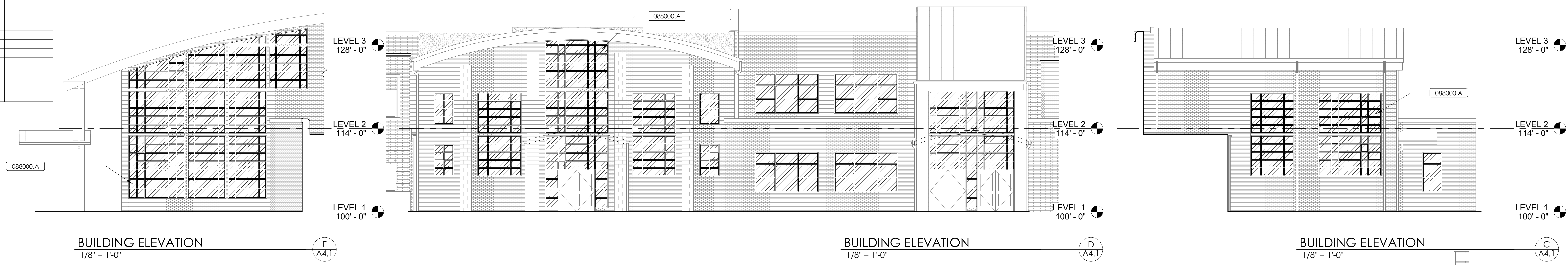
PROJECT VICINITY MAP



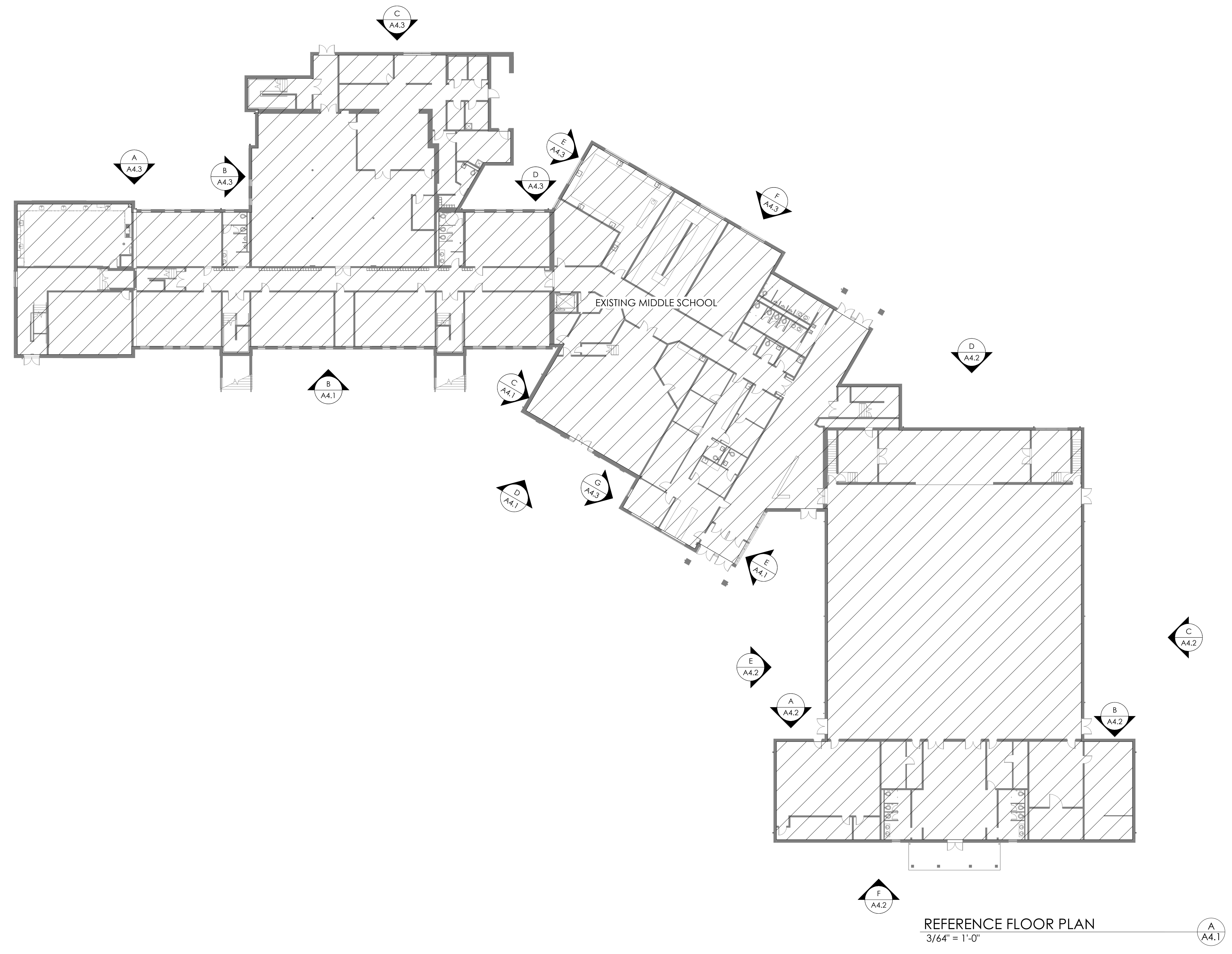
SITE

BG#	24-120
Project No:	23043
Drawn By:	BB/RAB
Rev'd By:	RAB/RSS
SHEET RELEASE	
1	
2	
3	
4	
5	
6	
7	
8	
COPYRIGHT © 2023	
CONSTRUCTION DOCUMENTS	
G0.0	
COVER SHEET	
DATE ISSUED: DECEMBER 7, 2023	

#	DATE	DESCRIPTION



MATERIAL REFERENCE
088000.A (Glazing)
IGU REPLACEMENT LEGEND
INSULATED GLAZING UNIT REPLACEMENT (088000)
GENERAL PLAN NOTES
1. (IN)CH NOT IN CONTRACT, PROVIDED BY OWNER AND INSTALLED BY OTHERS.
2. DO NOT SCALE DRAWINGS. WRITTEN DIMENSIONS TAKE PRECEDENCE.
3. ALL DIMENSIONS ARE TO FACE OF STUDS, MASONRY OR TO CENTERLINE OF STRUCT. STEEL UNLESS OTHERWISE NOTED. CONTACT ARCHITECT WITH ANY QUESTIONS REGARDING DIMENSIONS.



MATERIALS LEGEND:	
CONCRETE	FINISHED WOOD
CONCRETE MASONRY UNIT	PLYWOOD
CLAY MASONRY UNIT	WOOD BLOCKING
SPLIT-FACE CONCRETE MASONRY UNIT	CAVITY WALL INSULATION/PERLITE ROOFING INSULATION
GROUND-FACE CONCRETE MASONRY UNIT	POLYISO. ROOFING INSULATION
CUT STONE	THERMAL, SOUND, OR FIRE BATT. INSULATION
STEEL	GYPSUM BOARD
ALUMINUM	SPRAY-IN THERMAL INSULATION
ABBREVIATIONS	
A.F.F. ABOVE FINISH FLOOR	AL. ALTERNATE
AL. ALUMINUM	ARCH. ARCHITECT/ ARCHITECTURAL
ARCH. ARCHITECT/ ARCHITECTURAL	BD. BOARD
BD. BOARD	BIT. BITUMINOUS
BIT. BITUMINOUS	BLKG. BLOCKING
BLKG. BLOCKING	B.O. BOTTOM OF SOMETHING
B.O. BOTTOM OF SOMETHING	BRG. BEARING
BRG. BEARING	C.J. CONTRACTION/ CONSTRUCTION JOINT
C.J. CONTRACTION/ CONSTRUCTION JOINT	CLG. CENTERLINE
CLG. CENTERLINE	CLR. CEILING
CLR. CEILING	C.M.U. CONCRETE MASONRY UNIT
C.M.U. CONCRETE MASONRY UNIT	COL. COLUMN
COL. COLUMN	CONC. CONCRETE
CONC. CONCRETE	CONT. CONTINUOUS
CONT. CONTINUOUS	DIA. DIAMETER
DIA. DIAMETER	DS. DOWNSPOUT
DS. DOWNSPOUT	DWG. DRAWING
DWG. DRAWING	E.I.F.S. EXTERIOR INSULATION FINISH SYSTEM
E.I.F.S. EXTERIOR INSULATION FINISH SYSTEM	E.J. EXPANSION JOINT
E.J. EXPANSION JOINT	EQ. EQUIPMENT
EQ. EQUIPMENT	ELEV. ELEVATOR
ELEV. ELEVATOR	E.O.S. EDGE OF SLAB
E.O.S. EDGE OF SLAB	E.R.D. EMERGENCY ROOF DRAIN OVERFLOW
E.R.D. EMERGENCY ROOF DRAIN OVERFLOW	E.T.R. EXISTING TO REMAIN
E.T.R. EXISTING TO REMAIN	EXP. EXPANSION
EXP. EXPANSION	EXT. EXTERIOR
EXT. EXTERIOR	FAB. FABRICATE/ FABRICATION
FAB. FABRICATE/ FABRICATION	FDN. FOUNDATION
FDN. FOUNDATION	F.F.E. FINISH FLOOR ELEVATION
F.F.E. FINISH FLOOR ELEVATION	F.G.E. FINISH GRADE ELEVATION
F.G.E. FINISH GRADE ELEVATION	FIN. FINISH
FIN. FINISH	FLR. FLOOR/ FLOORING
FLR. FLOOR/ FLOORING	F.R.T. FIRE RETARDENT
F.R.T. FIRE RETARDENT	FT. FEET
FT. FEET	F.V. FIELD VERIFY
F.V. FIELD VERIFY	GA. GAUGE
GA. GAUGE	GALV. GALVANIZED
GALV. GALVANIZED	GYP. GYPSUM
GYP. GYPSUM	HORZ. HORIZONTAL
HORZ. HORIZONTAL	HT. HEIGHT
HT. HEIGHT	INSUL. INSULATION
INSUL. INSULATION	INT. INTERIOR
INT. INTERIOR	JT. JOINT
JT. JOINT	LAM. LAMINATE
LAM. LAMINATE	MAS. MASONRY
MAS. MASONRY	M.E.P. MECHANICAL, ELECTRICAL, PLUMBING
M.E.P. MECHANICAL, ELECTRICAL, PLUMBING	MFR. MANUFACTURER
MFR. MANUFACTURER	MAT. MATERIAL
MAT. MATERIAL	MAX. MAXIMUM
MAX. MAXIMUM	MECH. MECHANICAL
MECH. MECHANICAL	MEM. MEMBRANE
MEM. MEMBRANE	MIN. MINIMUM
MIN. MINIMUM	MISC. MISCELLANEOUS
MISC. MISCELLANEOUS	M.O. MASONRY OPENING
M.O. MASONRY OPENING	N.A. NOT APPLICABLE
N.A. NOT APPLICABLE	N.I.C. NOT IN CONTRACT
N.I.C. NOT IN CONTRACT	N.T.S. NOT TO SCALE
N.T.S. NOT TO SCALE	O.H. OVERHEAD
O.H. OVERHEAD	OPP. OPPOSITE
OPP. OPPOSITE	ORN. ORNAMENTAL
ORN. ORNAMENTAL	PEN. PENETRATION
PEN. PENETRATION	PL. PLATE
PL. PLATE	POLYISO. POLYISOCYANURATE
POLYISO. POLYISOCYANURATE	P.F. POUNDS PER SQUARE FOOT
P.F. POUNDS PER SQUARE FOOT	P.S.I. POUNDS PER SQUARE INCH
P.S.I. POUNDS PER SQUARE INCH	P.T. PRESSURE TREATED
P.T. PRESSURE TREATED	RAD. RADIUS
RAD. RADIUS	REIN. REINFORCEMENT
REIN. REINFORCEMENT	RQD. REQUIRED
RQD. REQUIRED	REV. REVISION/ REVISED
REV. REVISION/ REVISED	R.D. ROOF DRAIN
R.D. ROOF DRAIN	SECT. SECTION
SECT. SECTION	SIM. SIMILAR
SIM. SIMILAR	SPECS. SPECIFICATIONS
SPECS. SPECIFICATIONS	S.S. STAINLESS STEEL
S.S. STAINLESS STEEL	SQ. SQUARE
SQ. SQUARE	STD. STANDARD
STD. STANDARD	STL. STEEL
STL. STEEL	STRUCT. STRUCTURE/ STRUCTURAL
STRUCT. STRUCTURE/ STRUCTURAL	SYM. SYMMETRICAL
SYM. SYMMETRICAL	SYS. SYSTEM
SYS. SYSTEM	T.O. TOP OF SOMETHING
T.O. TOP OF SOMETHING	THK. THICK
THK. THICK	TP. TYPICAL
TP. TYPICAL	U.N.O. UNLESS NOTED OTHERWISE
U.N.O. UNLESS NOTED OTHERWISE	VERT. VERTICAL
VERT. VERTICAL	V.I.F. VERIFY IN FIELD
V.I.F. VERIFY IN FIELD	W/ WITH
W/ WITH	W/O WITHOUT
W/O WITHOUT	W.P. WORK POINT
W.P. WORK POINT	WT. WEIGHT

SYMBOLS LEGEND:
BUILDING SECTION
SECTION CUT / DETAIL MARKER
DETAIL
ELEVATION
DRAWING #
REFERENCE DETAIL
SPOT ELEVATION
ROOF TYPES
WALL TYPES. 'X' DENOTES SIZE OF CMU OR STUD.
DOOR NUMBER
HOLLOW METAL WINDOW & DOOR FRAME TYPE
ALUMINUM WINDOW & STOREFRONT FRAME TYPE
DOOR ELEVATION TYPES
WALL MOUNTED FIRE EXTINGUISHER (104400)
SEMI-RECESSED CABINET WITH FIRE EXTINGUISHER (104400)
WALL MOUNTED FIRE EXTINGUISHER, CLASS K (104400)

BUILDING ELEVATIONS

MARION COUNTY MIDDLE SCHOOL PARTIAL WINDOW REPLACEMENT

FOR:

MARION COUNTY BOARD OF EDUCATION

LEBANON, KENTUCKY

BG# 24-120

Project No: 23043

Drawn By: BB/RAB

Rev'd By: RAB/RBS

SHEET RELEASE

1
2
3
4
5
6
7
8

COPYRIGHT © 2023

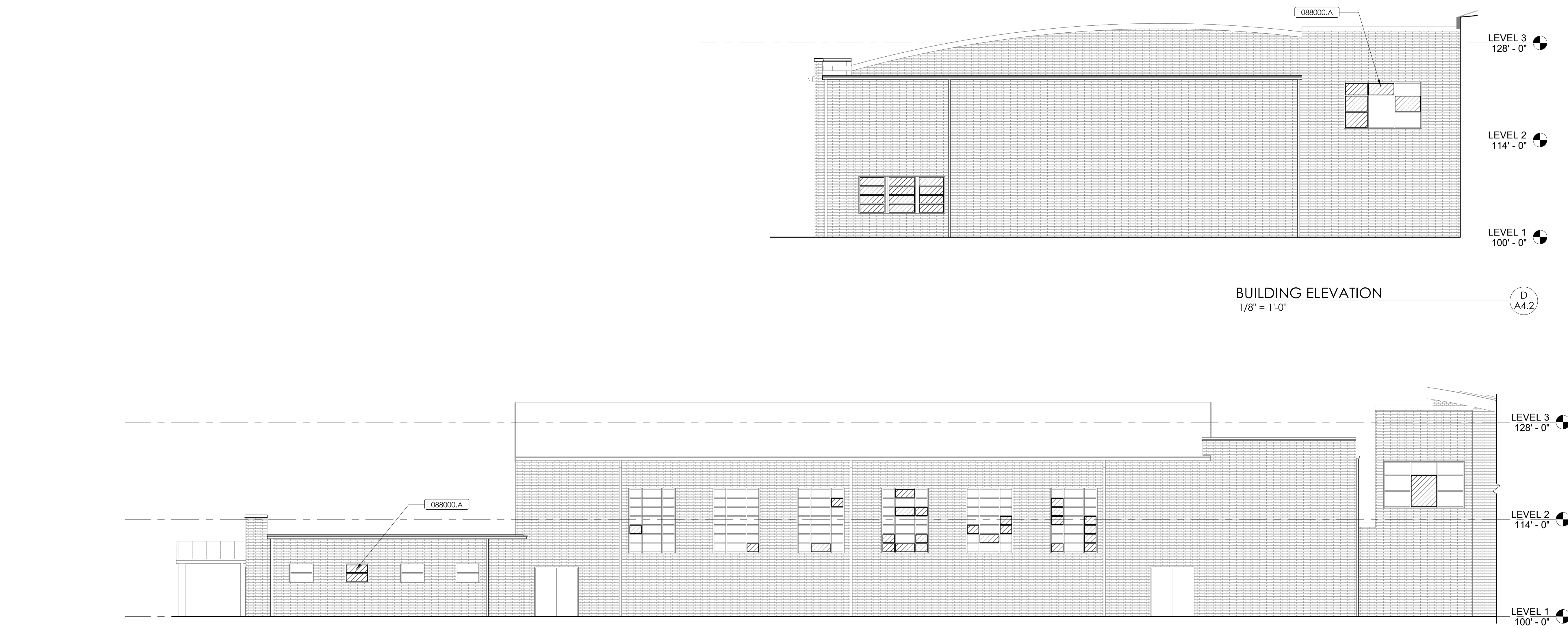
CONSTRUCTION DOCUMENTS

A4.1

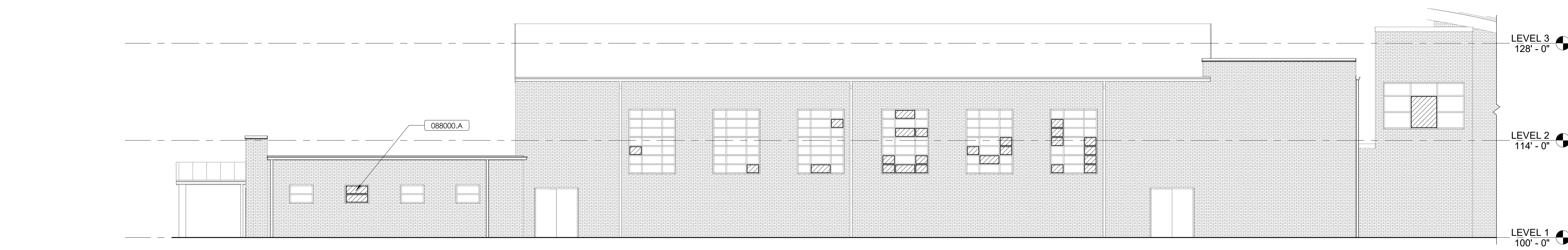
BUILDING ELEVATIONS

DATE ISSUED:
DECEMBER 7, 2023

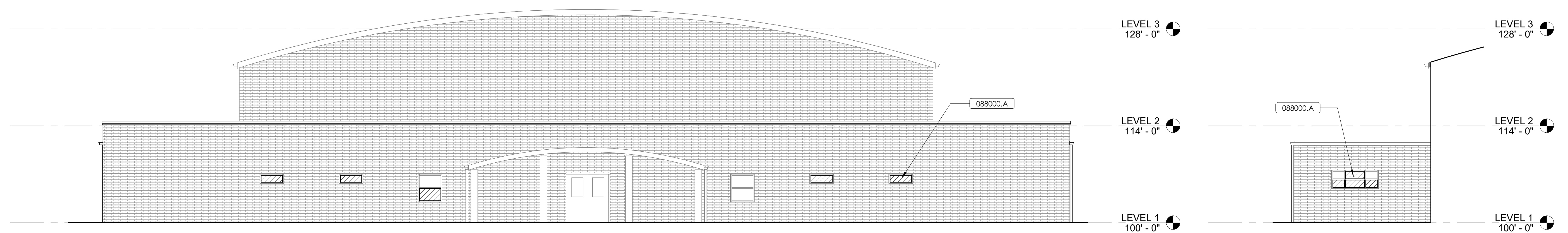
#	DATE	DESCRIPTION



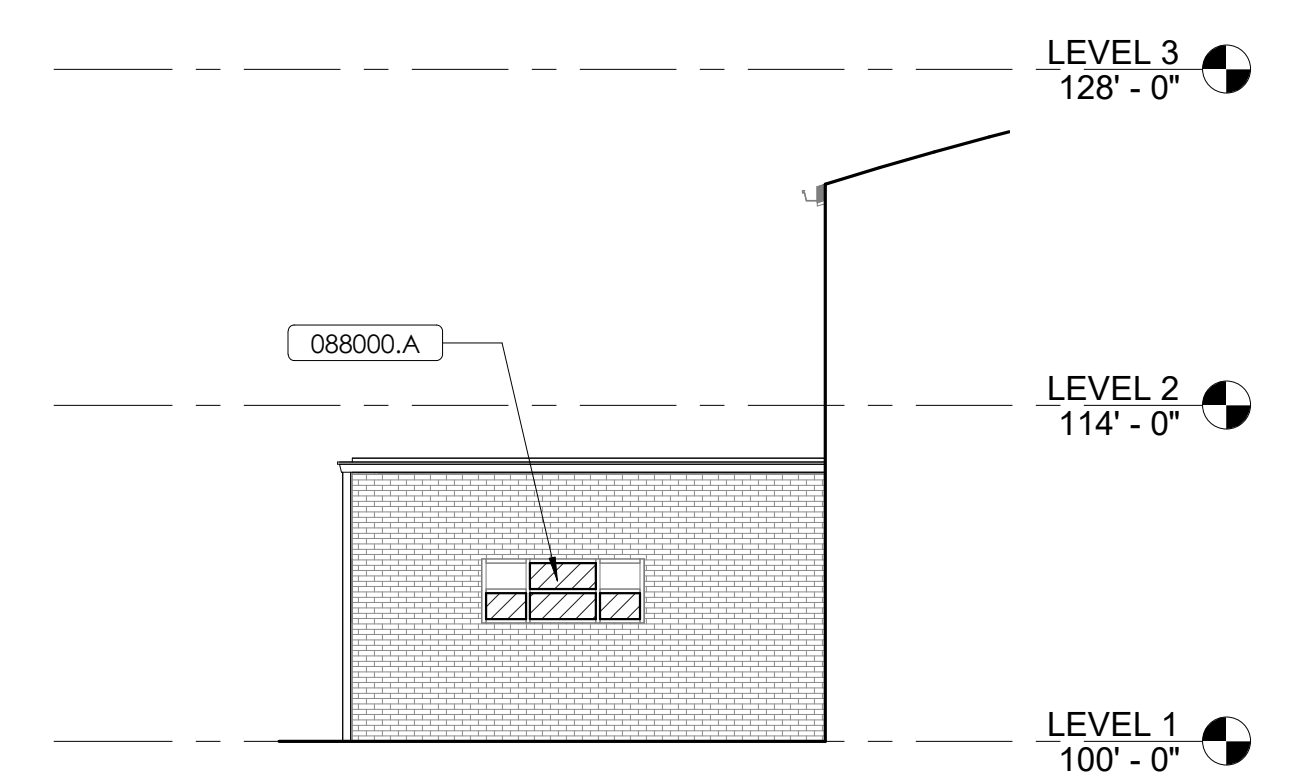
BUILDING ELEVATION
1/8" = 1'-0" D
A4.2



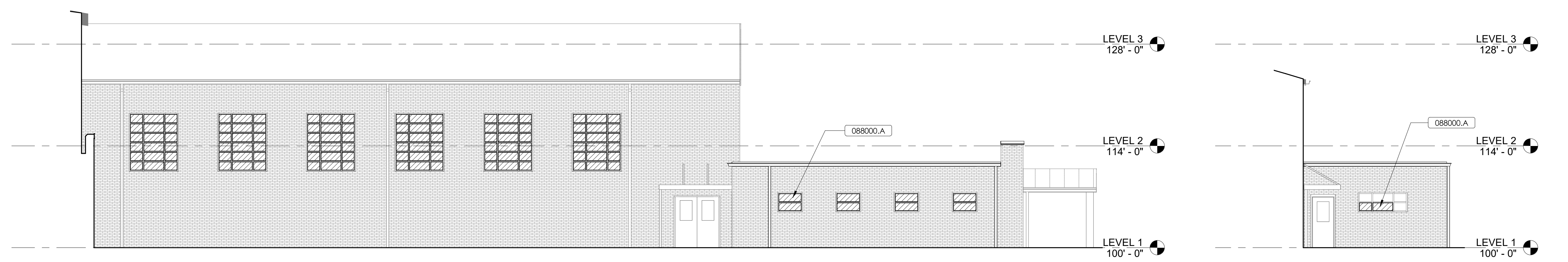
BUILDING ELEVATION
1/8" = 1'-0" C
A4.2



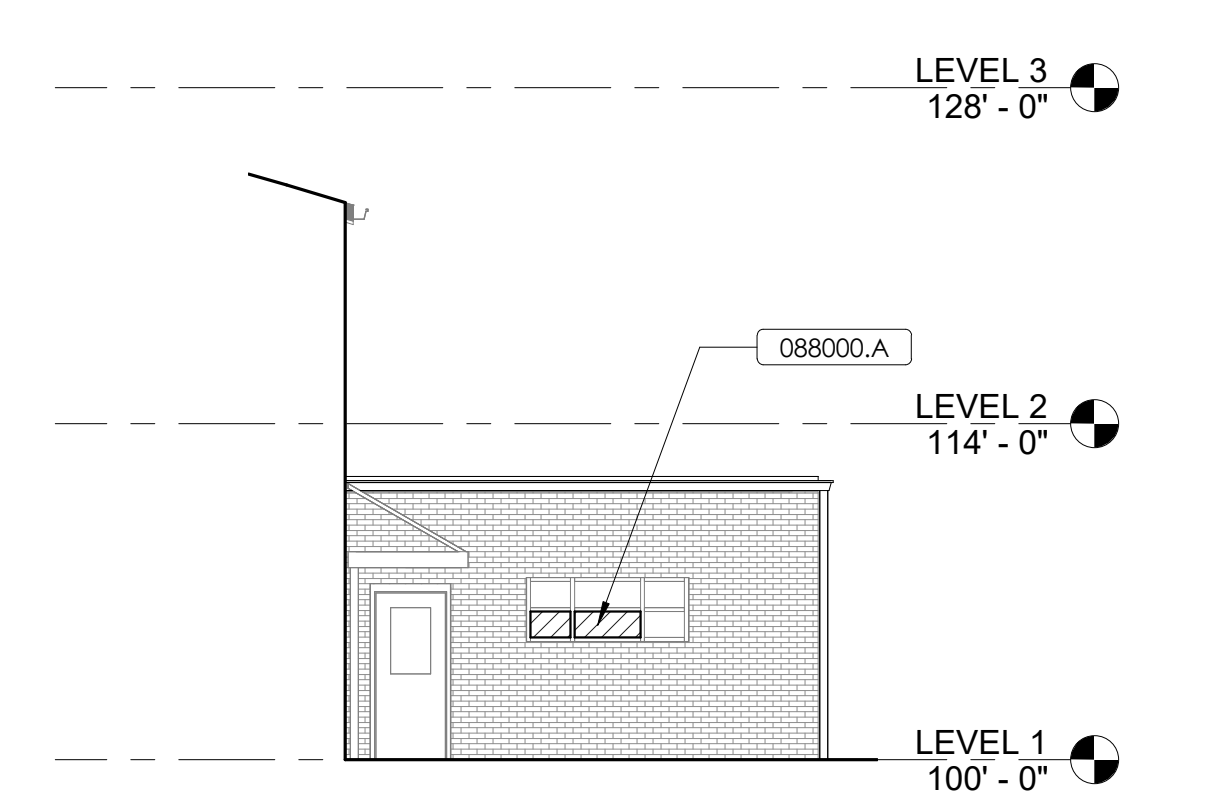
BUILDING ELEVATION
1/8" = 1'-0" F
A4.2



BUILDING ELEVATION
1/8" = 1'-0" B
A4.2



BUILDING ELEVATION
1/8" = 1'-0" E
A4.2



BUILDING ELEVATION
1/8" = 1'-0" A
A4.2

MATERIAL REFERENCE

088000.A Glazing

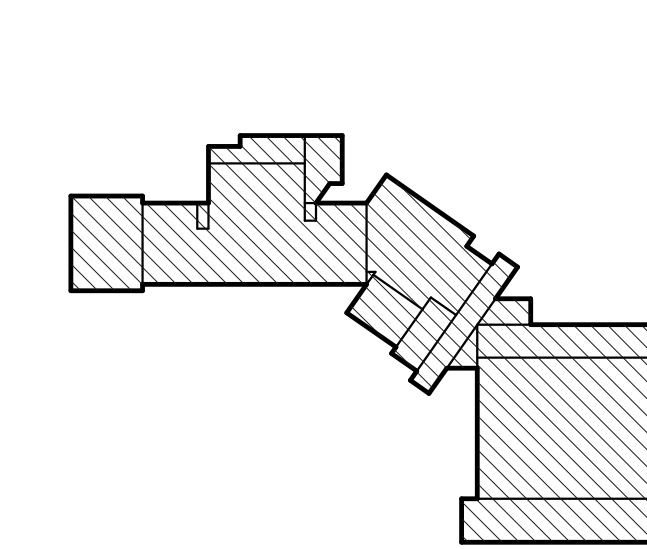
GENERAL ELEVATION NOTES

- COORDINATE EXTERIOR FINISHES WITH CHANGES IN GRADE. REFER TO SITE DRAWINGS FOR GRADE INFORMATION.
- COORDINATE LOCATION OF DOWNSPOUT BOOTS WITH SITE DRAWINGS.
- COORDINATE FOUNDATION DESIGN WITH STRUCTURAL DRAWINGS.

IGU REPLACEMENT LEGEND

INSULATED GLAZING UNIT REPLACEMENT (088000)

KEY PLAN



SCALE: NTS

rosstarrant
architects

101 old lafayette avenue levinston, kentucky 40022 p. 609.254.4018

BUILDING ELEVATIONS
MARION COUNTY MIDDLE SCHOOL PARTIAL WINDOW REPLACEMENT
FOR:
MARION COUNTY BOARD OF EDUCATION
LEBANON, KENTUCKY

BG# 24-120

Project No: 23043
Drawn By: BR/RAB
Rev'd By: RAB/RSB

SHEET RELEASE

1	
2	
3	
4	
5	
6	
7	
8	

COPYRIGHT © 2023
CONSTRUCTION DOCUMENTS

A4.2

BUILDING ELEVATIONS

DATE ISSUED:
DECEMBER 7, 2023

REVISIONS		
#	DATE	DESCRIPTION

MATERIAL REFERENCE

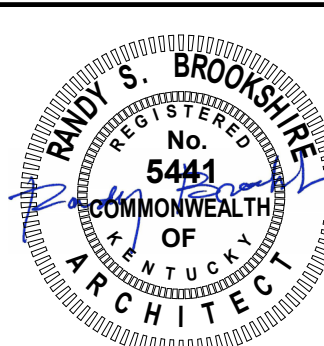
088000.A Glazing

GENERAL ELEVATION NOTES

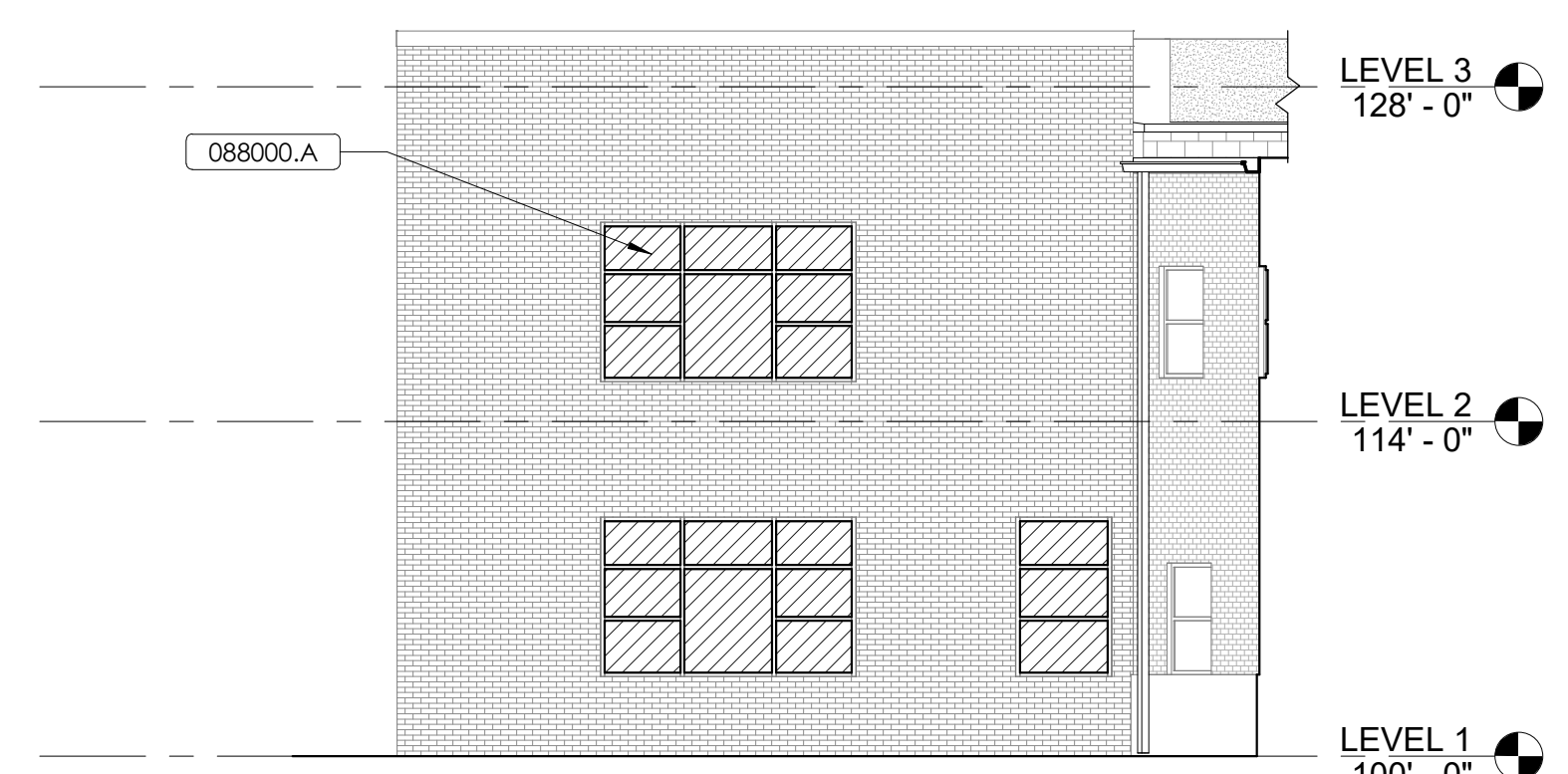
- COORDINATE EXTERIOR FINISHES WITH CHANGES IN GRADE. REFER TO SITE DRAWINGS FOR GRADE INFORMATION.
- COORDINATE LOCATION OF DOWNSPOUT BOOTS WITH SITE DRAWINGS.
- COORDINATE FOUNDATION DESIGN WITH STRUCTURAL DRAWINGS.

IGU REPLACEMENT LEGEND

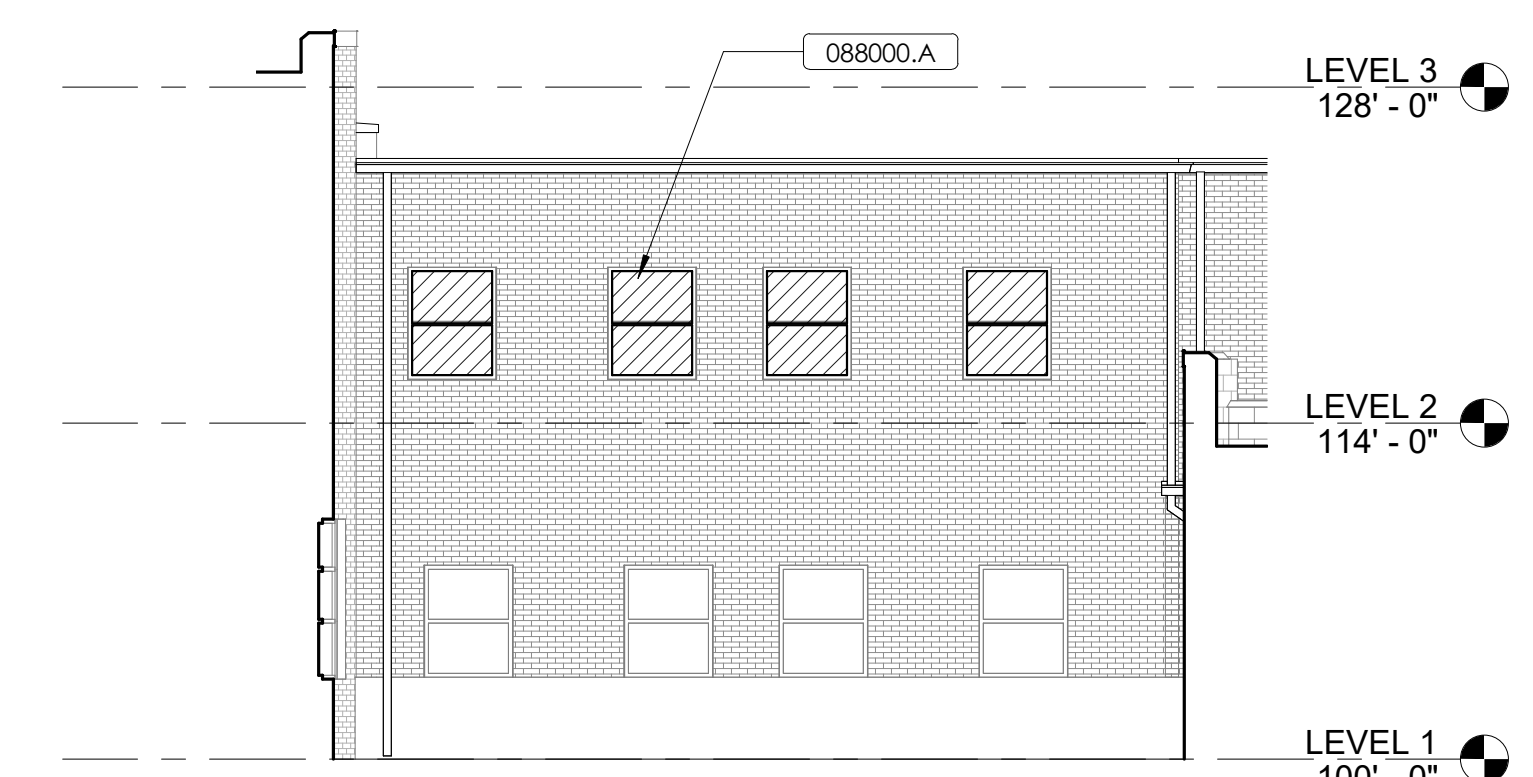
 INSULATED GLAZING UNIT REPLACEMENT (088000)



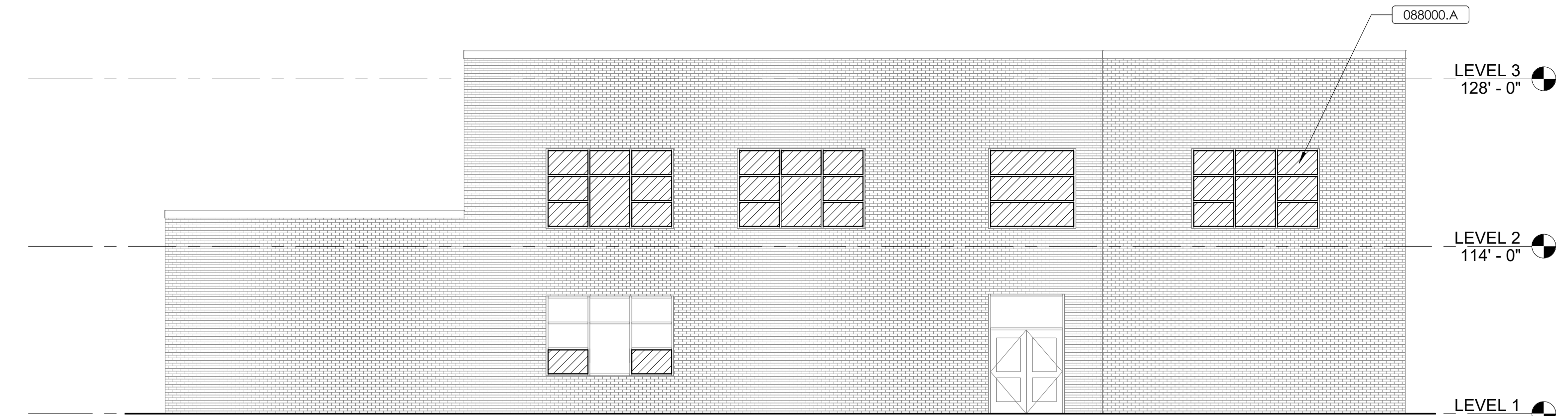
BUILDING ELEVATIONS
FOR:
MARION COUNTY BOARD OF EDUCATION
LEBANON, KENTUCKY



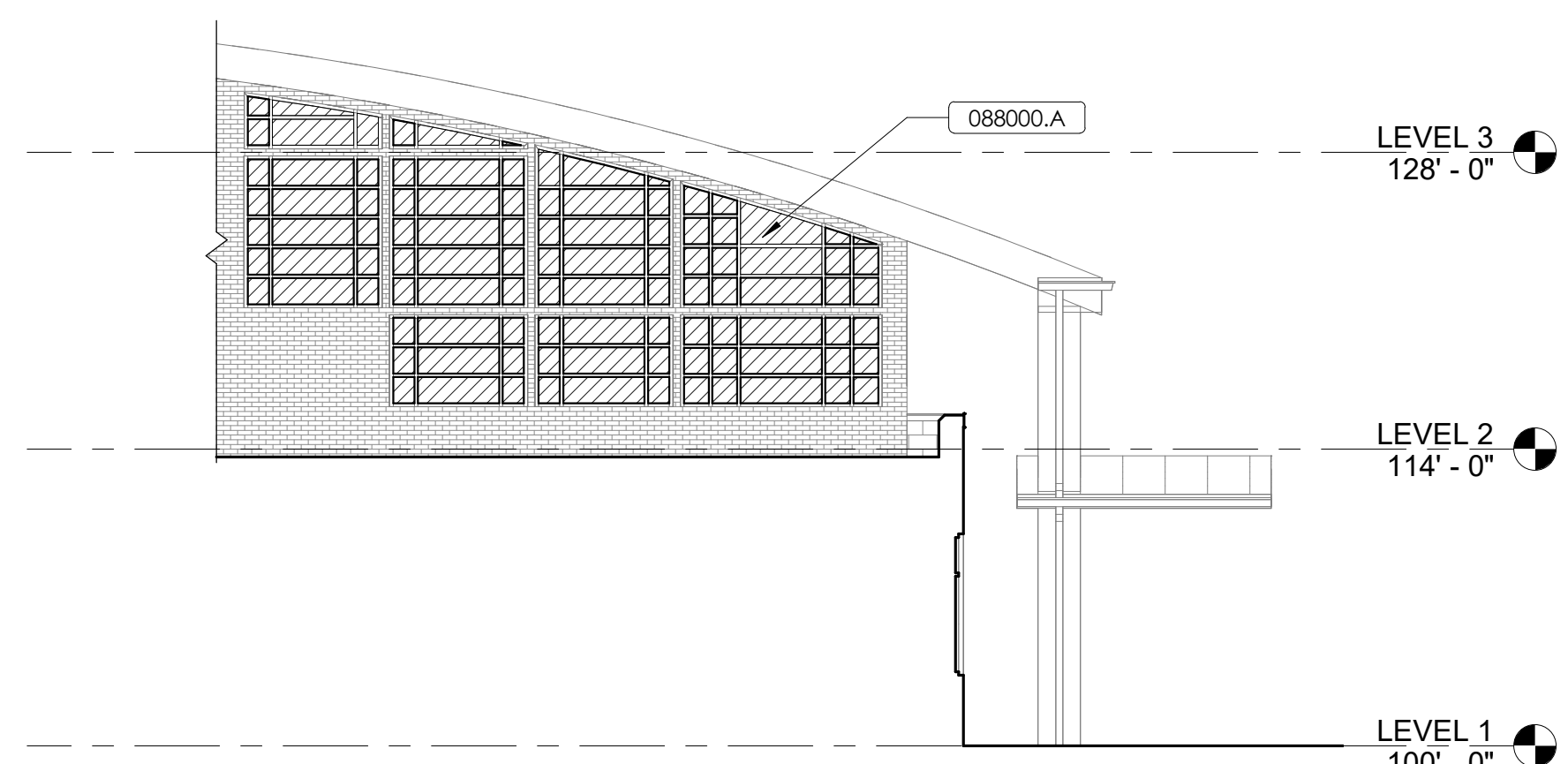
BUILDING ELEVATION E
1/8" = 1'-0" (A4.3)



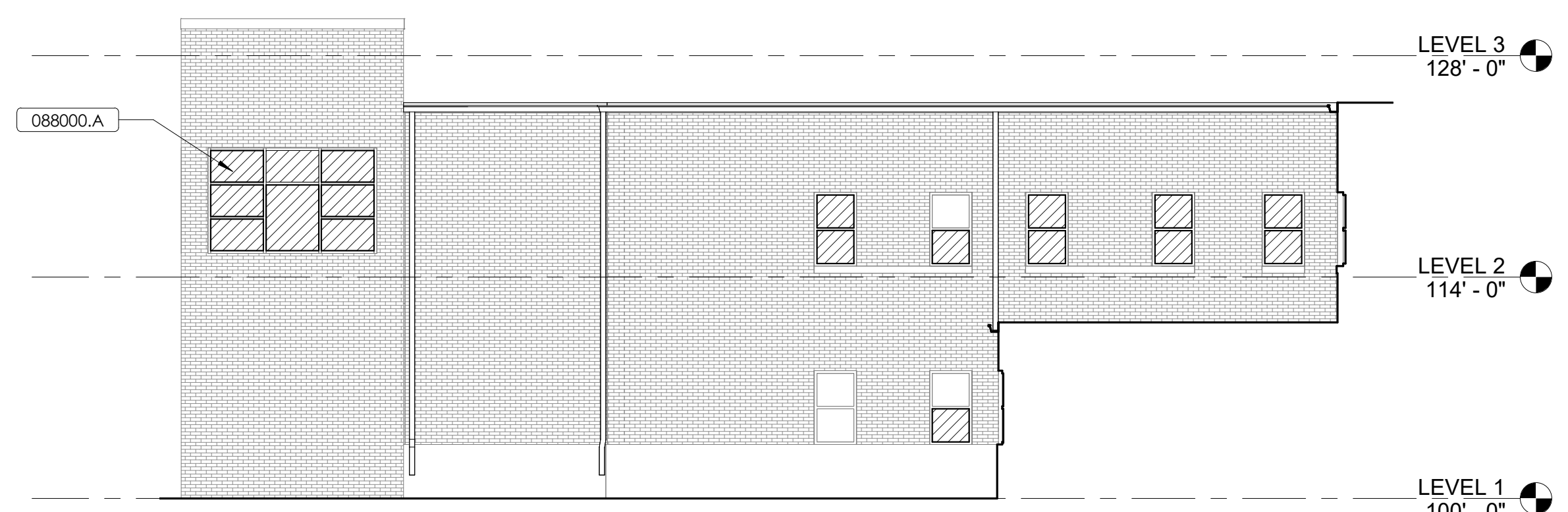
BUILDING ELEVATION D
1/8" = 1'-0" (A4.3)



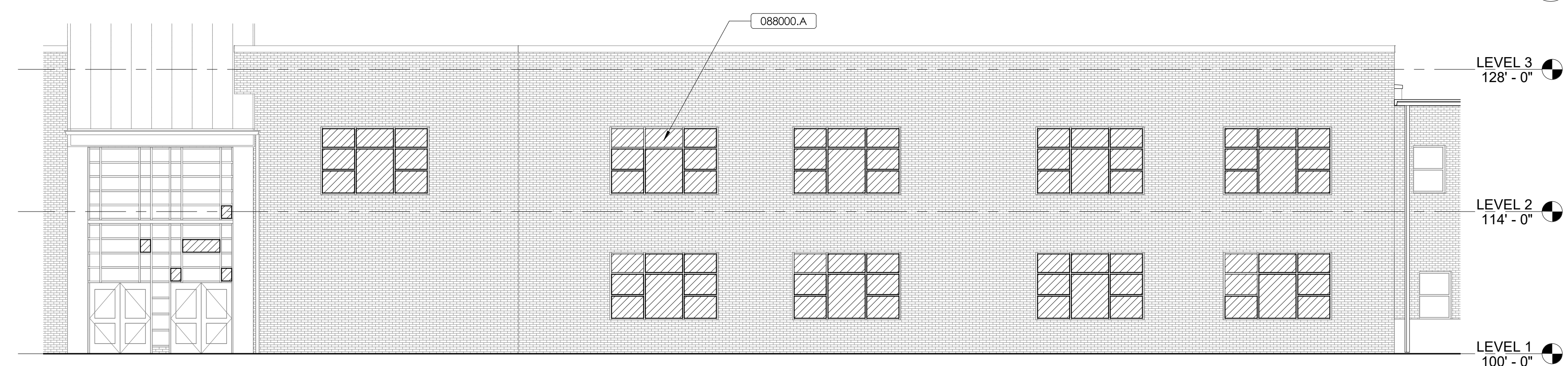
BUILDING ELEVATION C
1/8" = 1'-0" (A4.3)



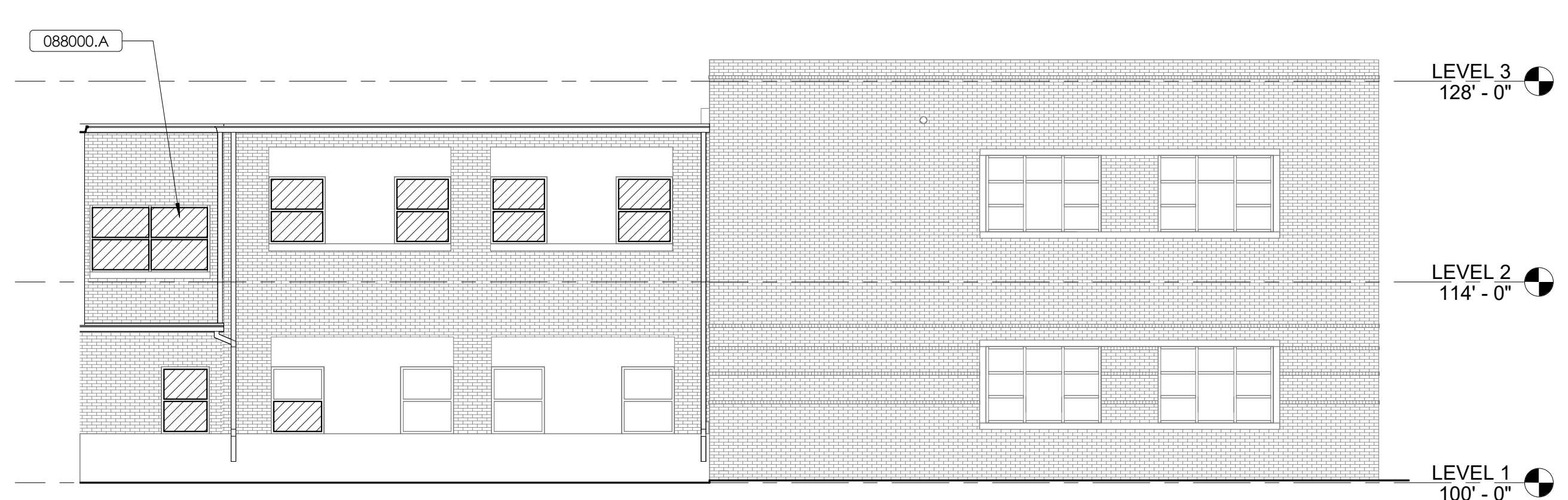
BUILDING ELEVATION G
1/8" = 1'-0" (A4.3)



BUILDING ELEVATION B
1/8" = 1'-0" (A4.3)

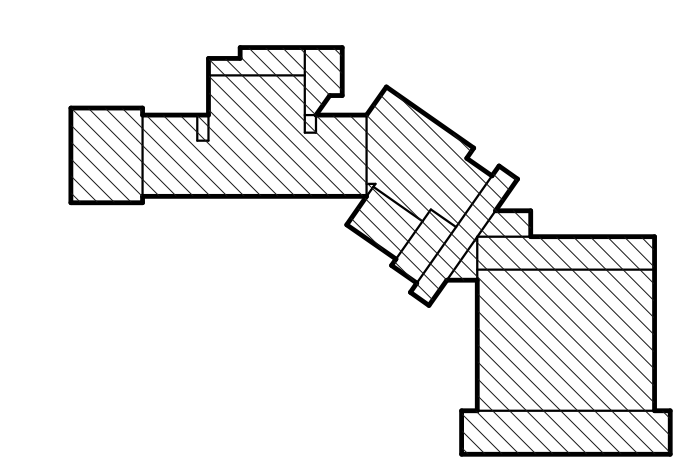


BUILDING ELEVATION F
1/8" = 1'-0" (A4.3)



BUILDING ELEVATION A
1/8" = 1'-0" (A4.3)

KEY PLAN



BG# 24-120

Project No: 23043
Drawn By: BR/RAB
Rev'd By: RAB/RSB

SHEET RELEASE

1	
2	
3	
4	
5	
6	
7	
8	

COPYRIGHT © 2023

CONSTRUCTION DOCUMENTS

A4.3

BUILDING ELEVATIONS

DATE ISSUED:
DECEMBER 7, 2023

SCALE: NTS

