

DATE:

10/26/2023

AGENDA ITEM (ACTION ITEM):

Consider / Approve the revised schematic design and design development plan for the Central Office and Virtual Learning Center Facility from Emboss Architecture.

APPLICABLE BOARD POLICY:

01.1 Legal Status of the Board; 04.31 Authority to Encumber and Expend Funds; 702 KAR 4:160

HISTORY/BACKGROUND:

The Board of Education approved the schematic design of a new Central Office and Virtual Learning Facility as prepared by Emboss Design at the September 11, 2023 regular board meeting. The schematic design included a basement level to house storage, a classroom, and a production studio. Upon Board approval, Emboss Design presented the schematic design to civil engineers who worked to place the building on the District's land. Engineers determined the basement would fall below the 500-year flood plain no matter how it was positioned on the land and advised considering removal of the basement to avoid the flood plain. Emboss has prepared a revised schematic design eliminating the basement and moving all spaces originally designed to be in the basement throughout the remainder of the building.

FISCAL/BUDGETARY IMPACT:

Estimated base construction cost of the building reduced by \$1.1 million

RECOMMENDATION:

Approve the revised schematic design and design development plan for the Central Office and Virtual Learning Center Facility from Emboss Design.

CONTACT PERSON:

Matt Rigg, Chief Operations Officer

Principal/Administrator



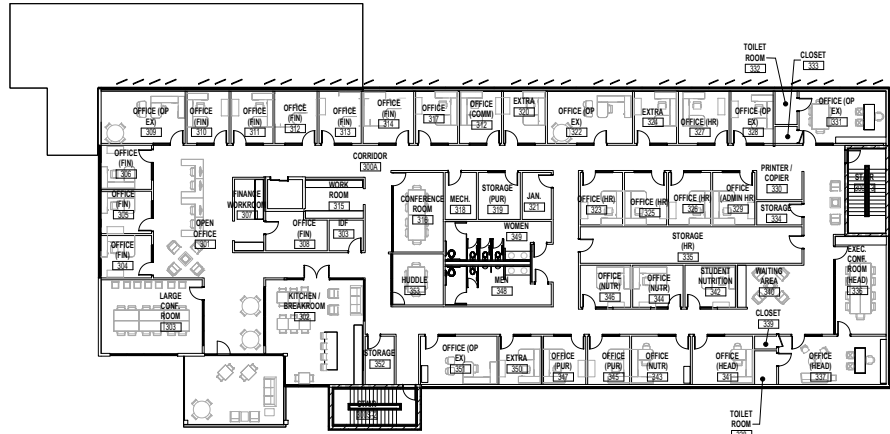
District Administrator



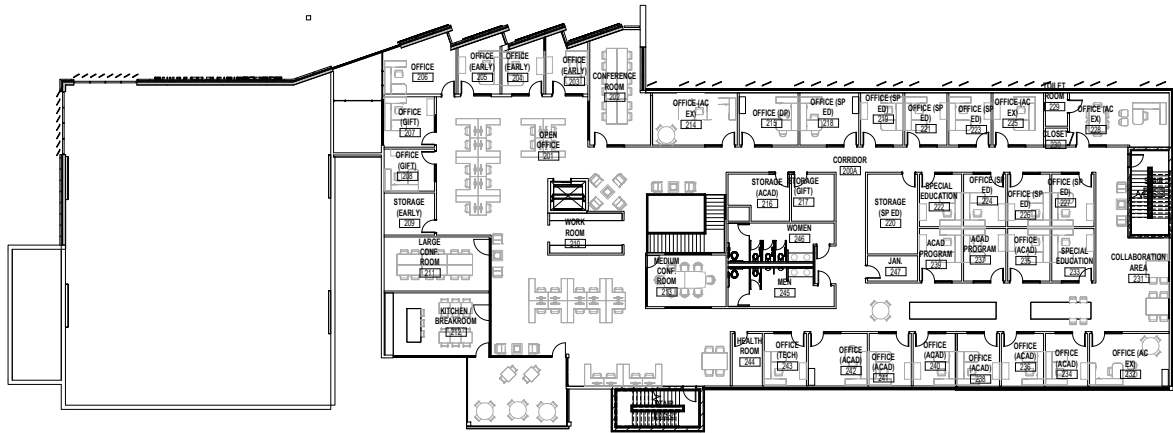
Superintendent

Use this form to submit your request to the Superintendent for items to be added to the Board Meeting Agenda
Principal – Complete, print, sign and send to your Director. Director – if approved, sign and put in the Superintendent's mailbox

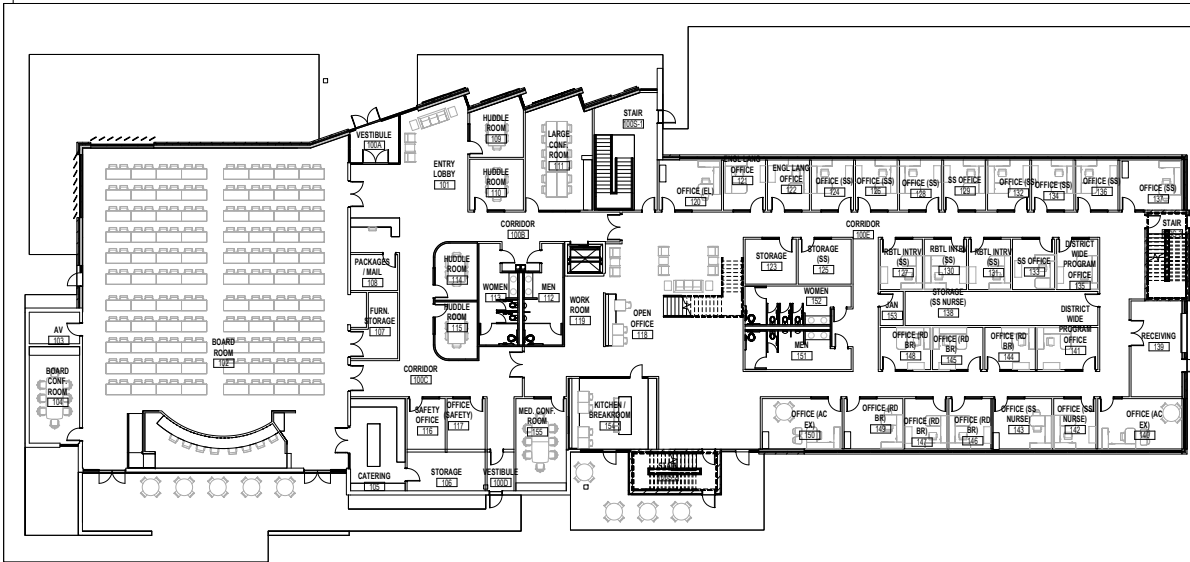
EXISTING LAYOUT WITH LOWER LEVEL (BASEMENT)



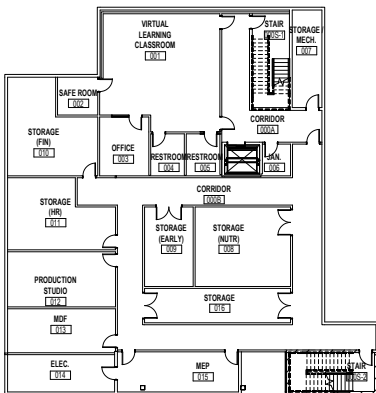
MAGNETIC PLAN
THIRD FLOOR



MAGNETIC PLAN
SECOND FLOOR

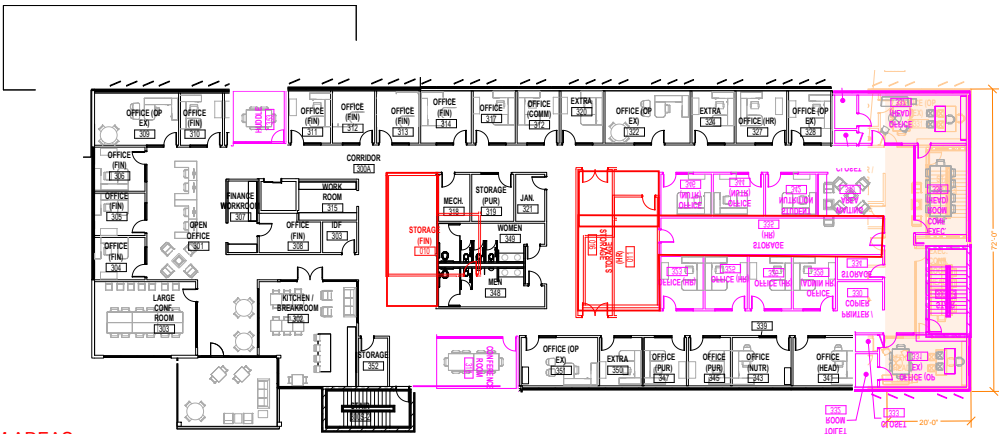


MAGNETIC PLAN
FIRST FLOOR



MAGNETIC PLAN
LOWER LEVEL

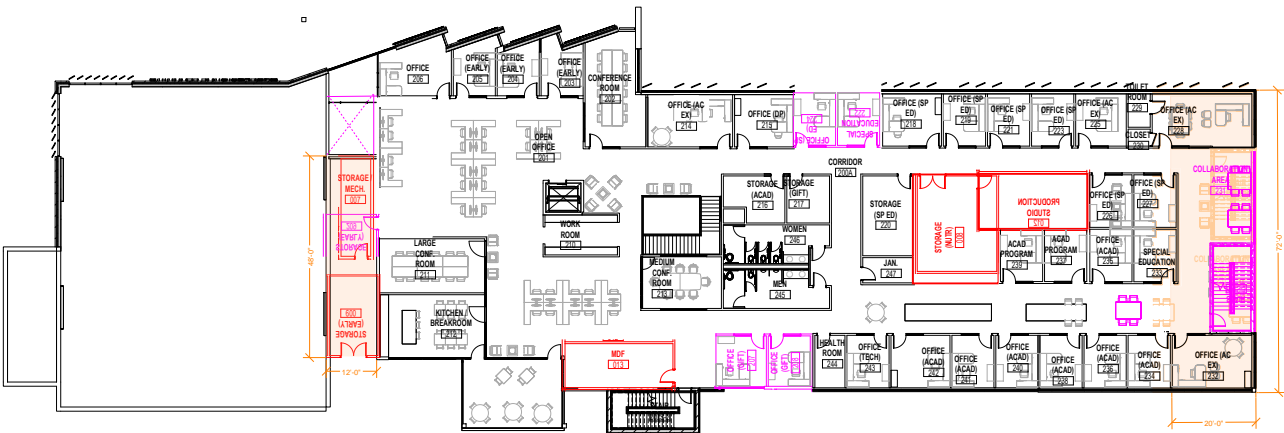
PROPOSED NEW LAYOUT WITHOUT LOWER LEVEL (BASEMENT)



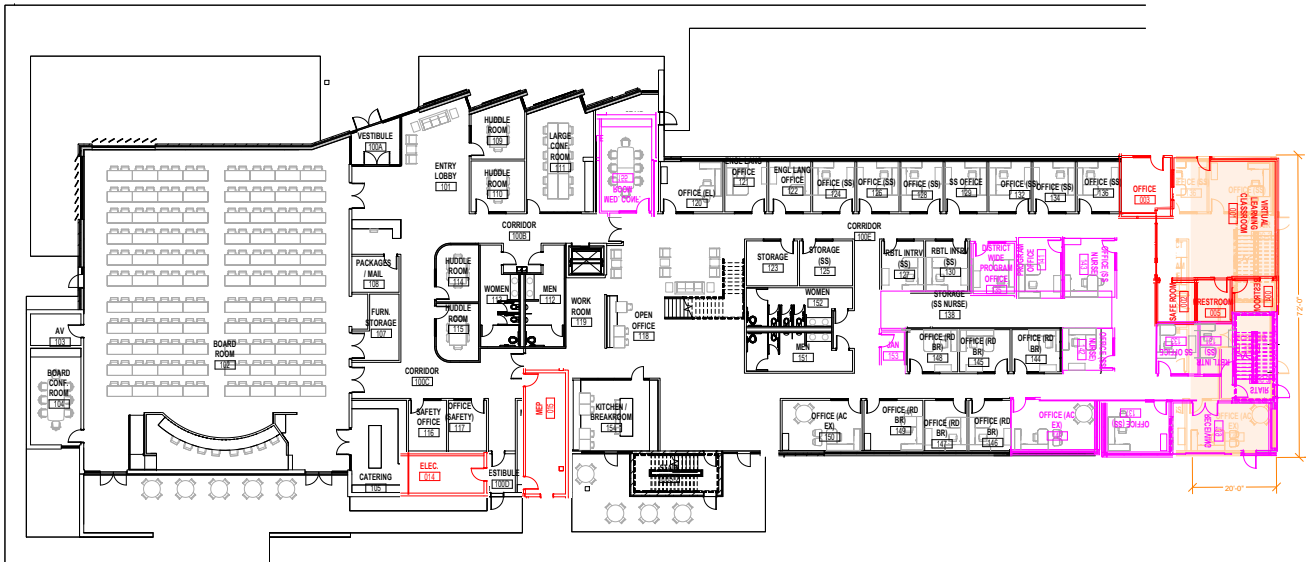
LEGEND

- RED = RELOCATED LOWER LEVEL PROGRAM AREAS
- MAGENTA = RELOCATED PROGRAM ON SAME LEVEL
- ORANGE = EXPANDED BUILDING FOOTPRINT

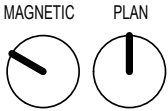
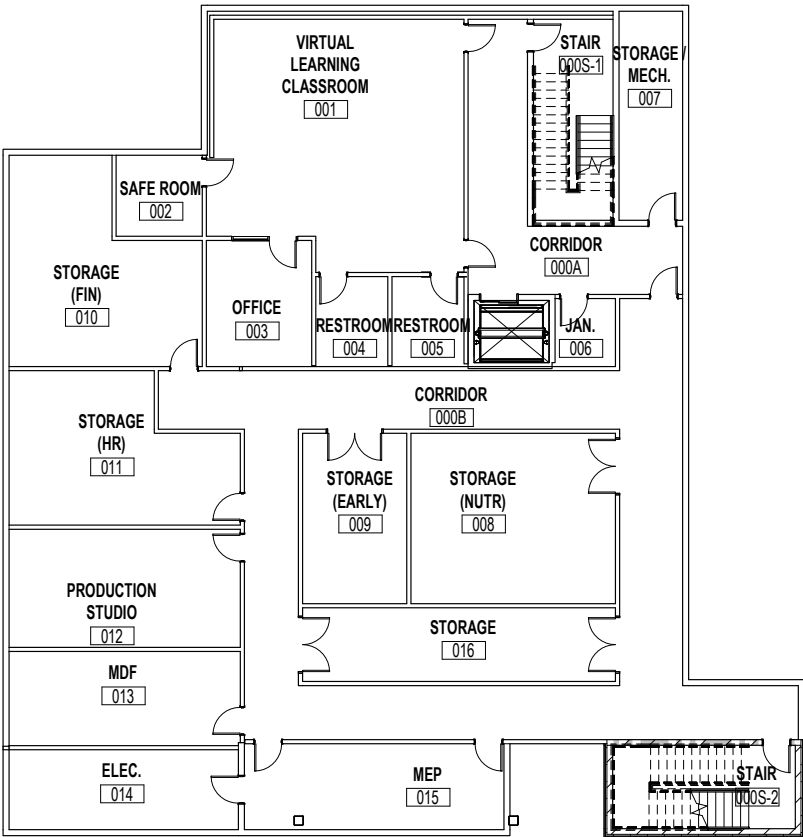
MAGNETIC PLAN
THIRD FLOOR




MAGNETIC PLAN
SECOND FLOOR

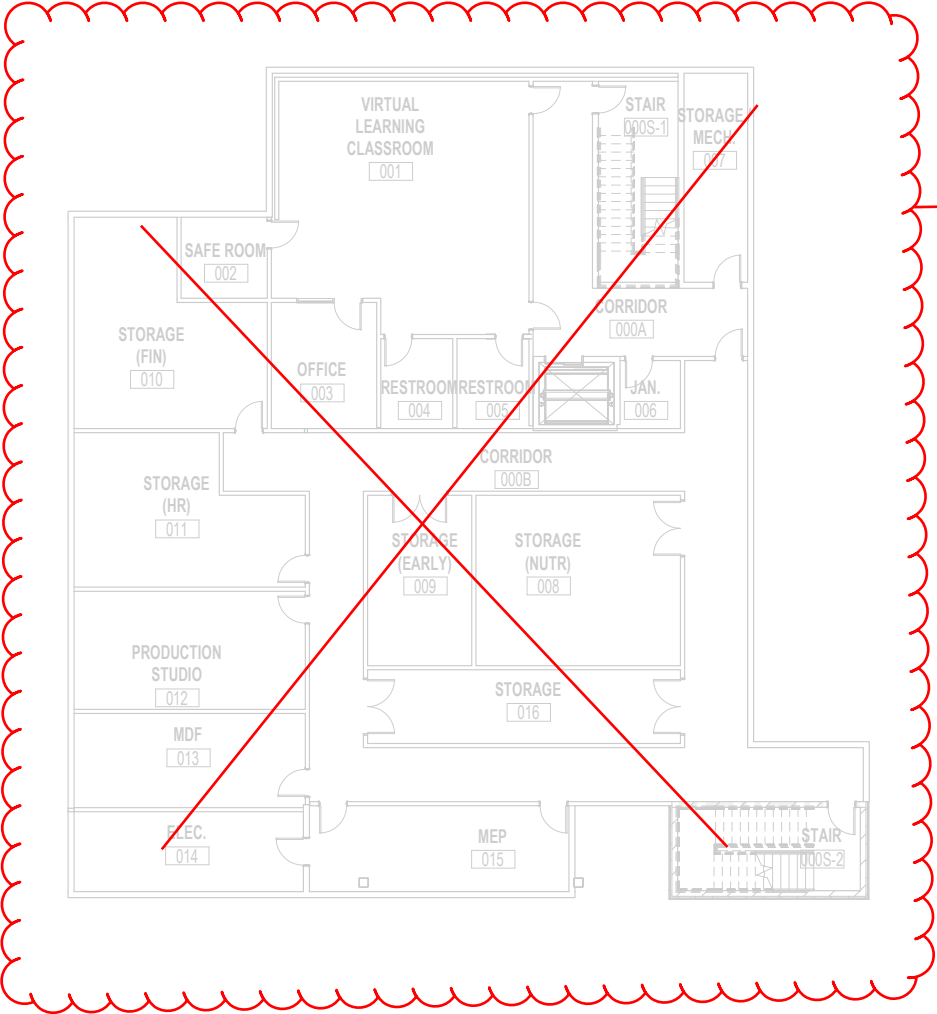


MAGNETIC PLAN
FIRST FLOOR

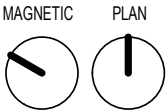


LOWER LEVEL

 Design that Makes a Mark.	PROJECT KENTON COUNTY SCHOOL DISTRICT
	SHEET TITLE EXISTING LAYOUT WITH LOWER LEVEL (BASEMENT)




ELIMINATED LOWER LEVEL. LOWER LEVEL PROGRAM BEING REDISTRIBUTED ON LEVELS 1-3 SHOWN IN RED

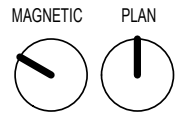
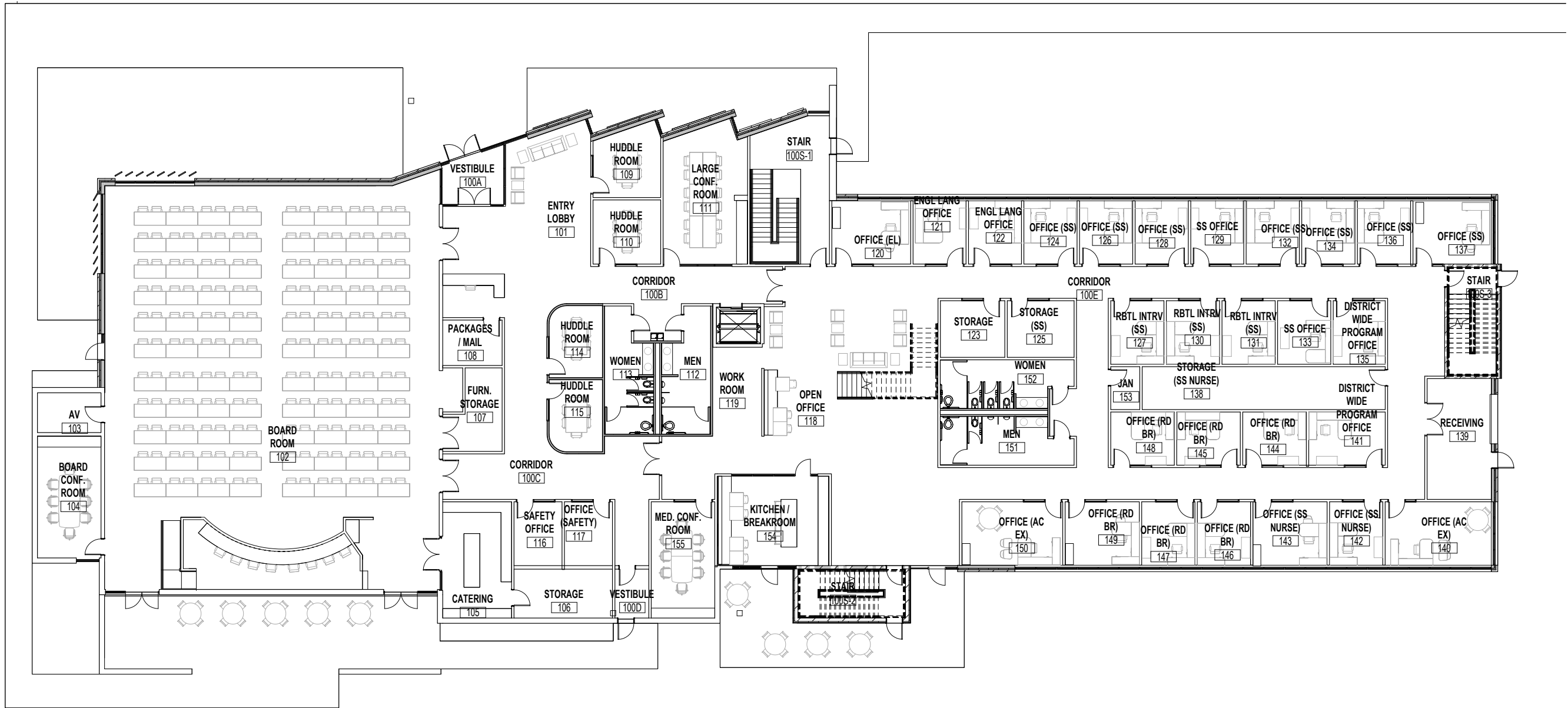


LOWER LEVEL


LEGEND

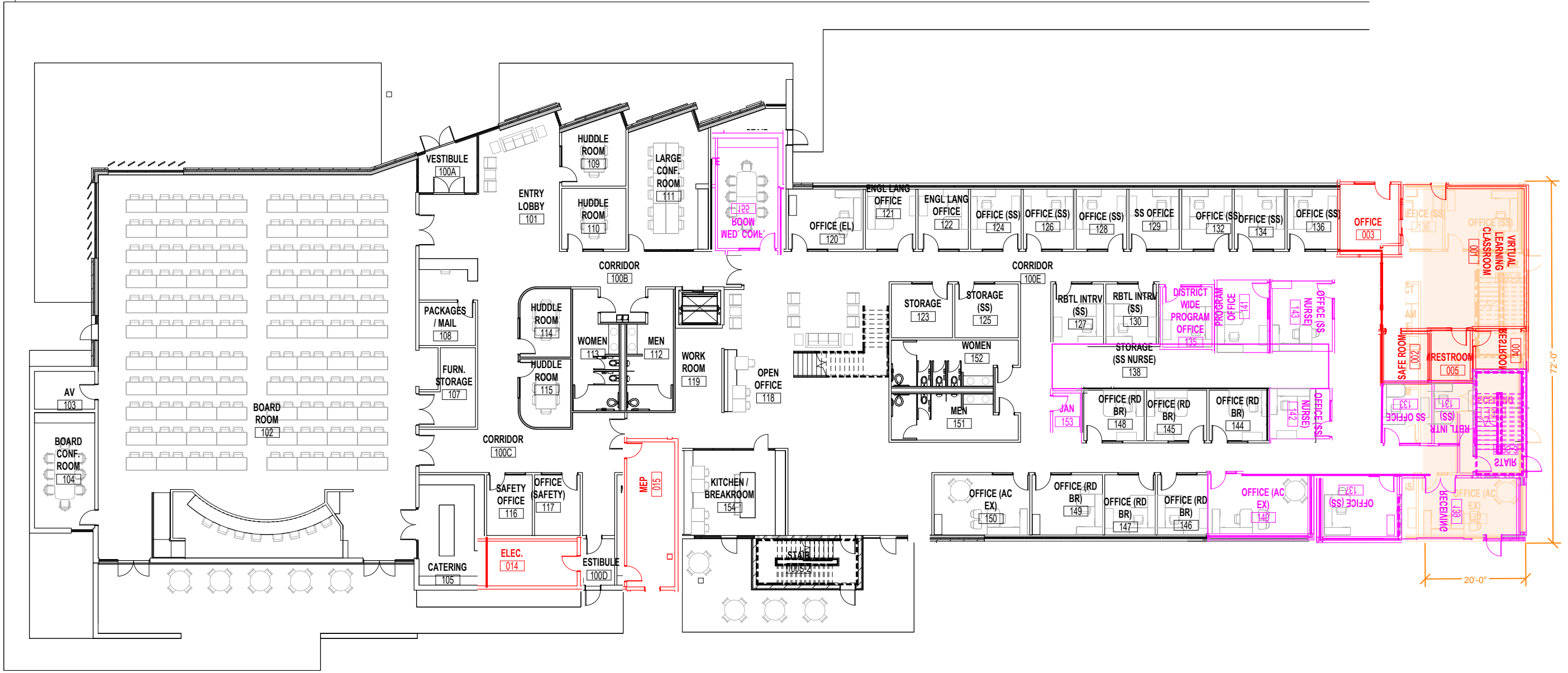
- RED** = RELOCATED LOWER LEVEL PROGRAM AREAS
- MAGENTA** = RELOCATED PROGRAM ON SAME LEVEL
- ORANGE** = EXPANDED BUILDING FOOTPRINT

 <small>Design that Makes a Mark.</small>		PROJECT KENTON COUNTY SCHOOL DISTRICT
PROJECT NO.	22-106	SHEET TITLE PROPOSED NEW LAYOUT WITHOUT LOWER LEVEL (BASEMENT)
ISSUE DATE		
REVISION NO.		



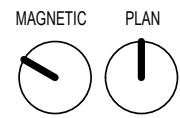
FIRST FLOOR

 <p>Design that Makes a Mark.</p>		PROJECT KENTON COUNTY SCHOOL DISTRICT	
PROJECT NO.	22-106	SHEET TITLE EXISTING LAYOUT WITH LOWER LEVEL (BASEMENT)	
ISSUE DATE			
REVISION NO.			




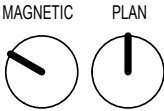
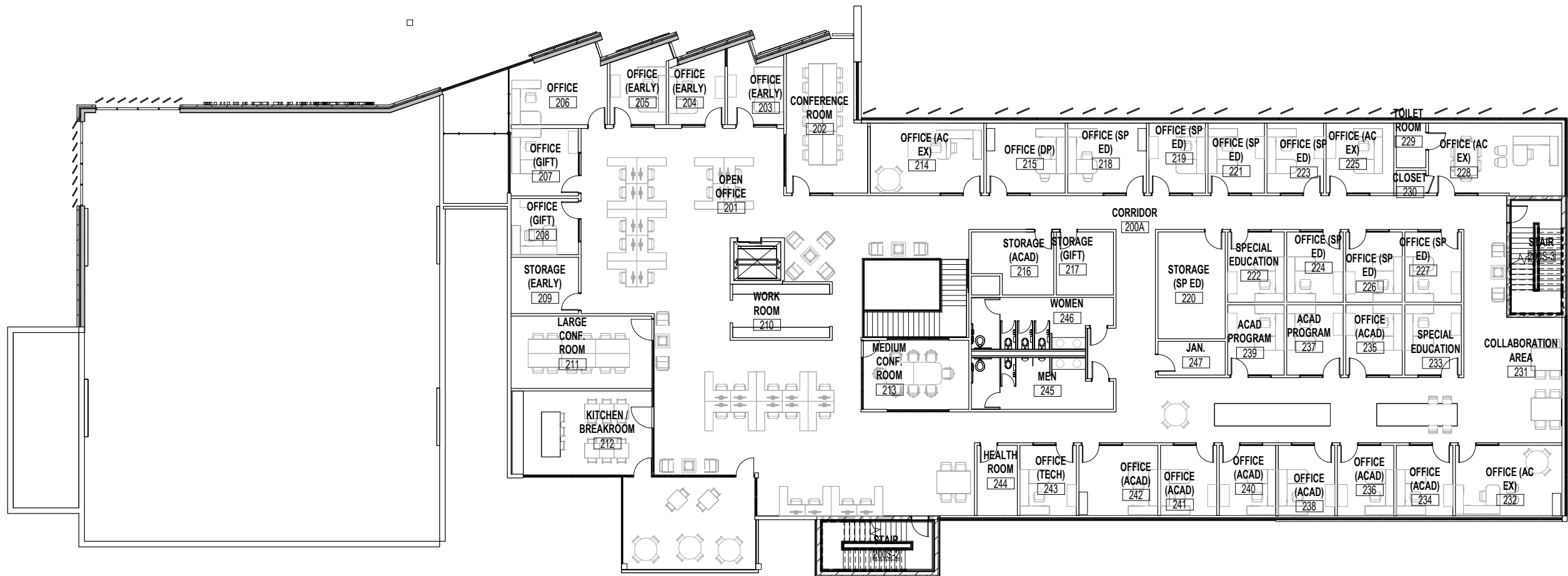
LEGEND

- RED = RELOCATED LOWER LEVEL PROGRAM AREAS
- MAGENTA = RELOCATED PROGRAM ON SAME LEVEL
- ORANGE = EXPANDED BUILDING FOOTPRINT




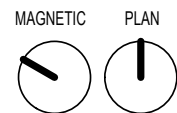
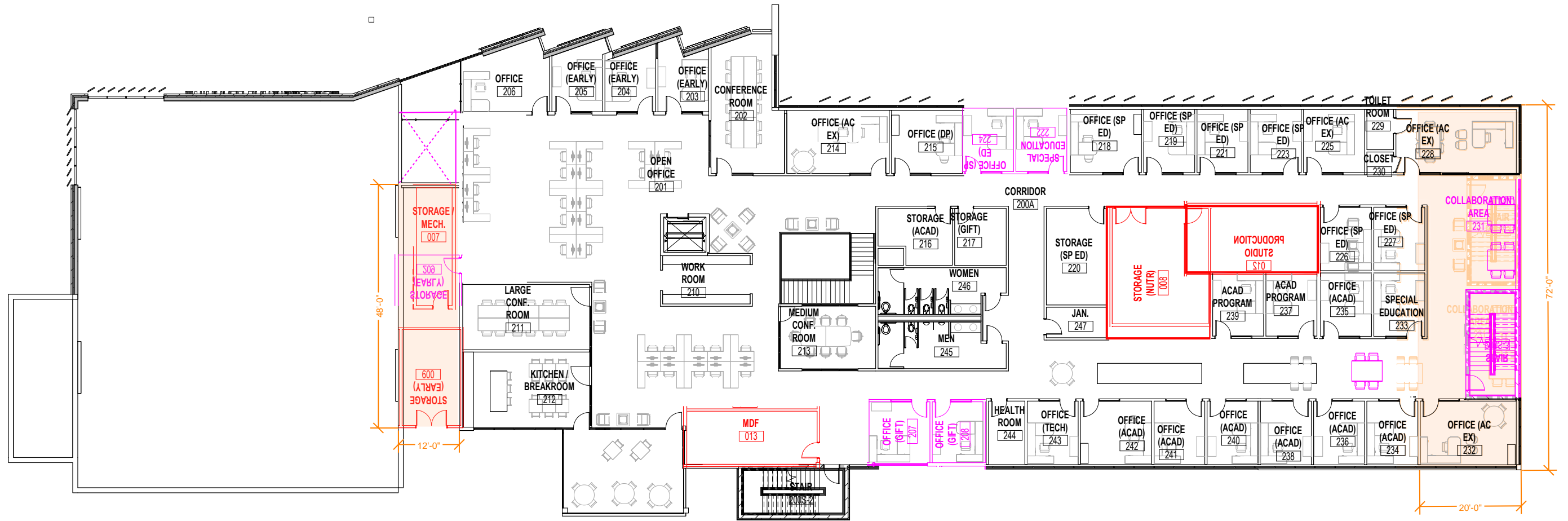
FIRST FLOOR

 Design that Makes a Mark.		PROJECT KENTON COUNTY SCHOOL DISTRICT	
PROJECT NO. 22-106		SHEET TITLE PROPOSED NEW LAYOUT WITHOUT LOWER LEVEL (BASEMENT)	
ISSUE DATE			
REVISION NO.			



SECOND FLOOR


 <p>Design that Makes a Mark.</p>		PROJECT KENTON COUNTY SCHOOL DISTRICT	
PROJECT NO.	22-106	SHEET TITLE EXISTING LAYOUT WITH LOWER LEVEL (BASEMENT)	
ISSUE DATE			
REVISION NO.			

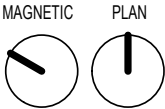
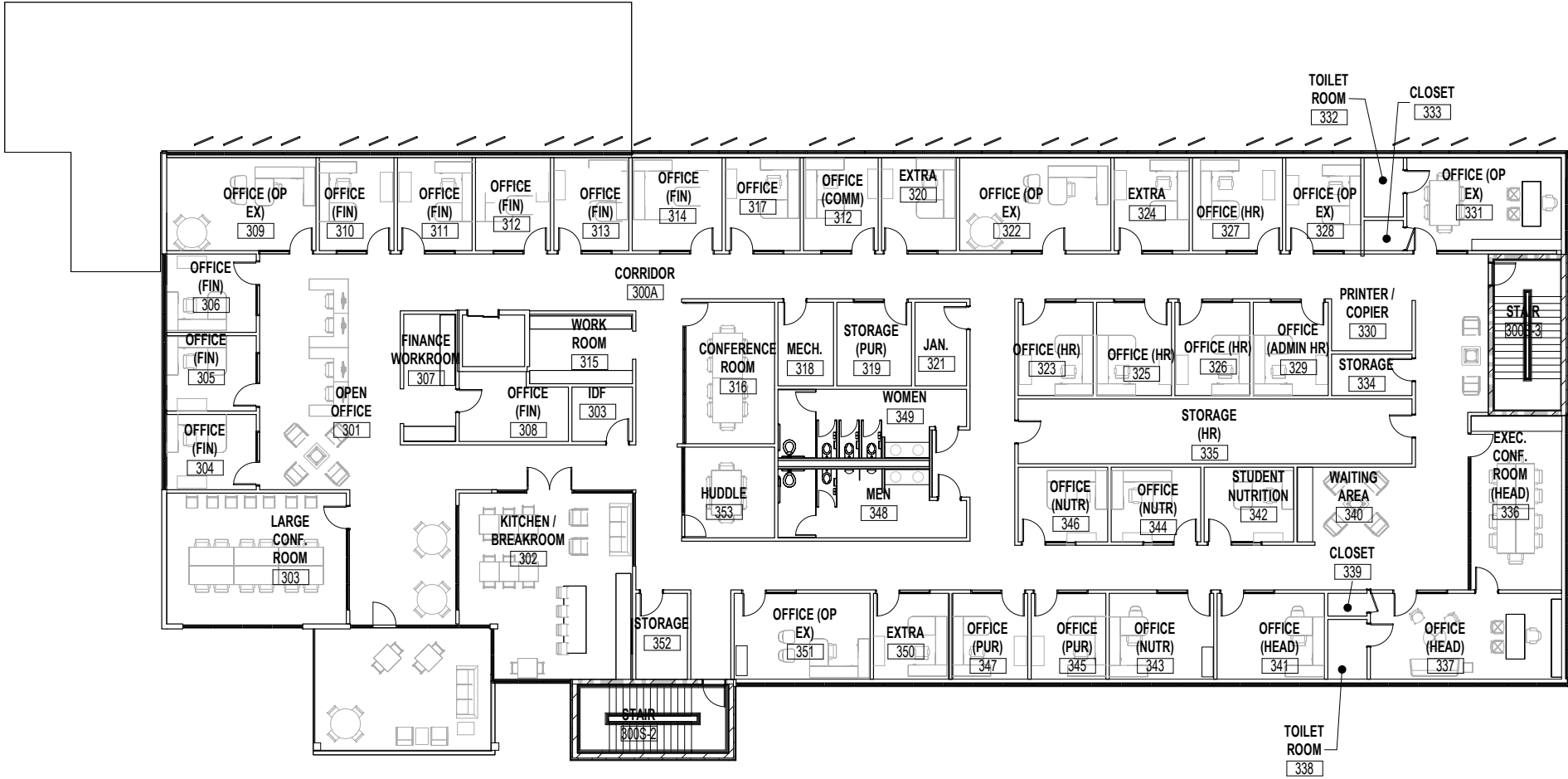


SECOND FLOOR

LEGEND

- RED = RELOCATED LOWER LEVEL PROGRAM AREAS**
- MAGENTA = RELOCATED PROGRAM ON SAME LEVEL**
- ORANGE = EXPANDED BUILDING FOOTPRINT**

 Design that Makes a Mark.		PROJECT KENTON COUNTY SCHOOL DISTRICT
PROJECT NO.	22-106	SHEET TITLE PROPOSED NEW LAYOUT WITHOUT LOWER LEVEL (BASEMENT)
ISSUE DATE		
REVISION NO.		



THIRD FLOOR




PROJECT		SHEET TITLE
KENTON COUNTY SCHOOL DISTRICT		
PROJECT NO.	22-106	
ISSUE DATE		
REVISION NO.		EXISTING LAYOUT WITH LOWER LEVEL (BASEMENT)



LEGEND

- RED = RELOCATED LOWER LEVEL PROGRAM AREAS
- MAGENTA = RELOCATED PROGRAM ON SAME LEVEL
- ORANGE = EXPANDED BUILDING FOOTPRINT

 Design that Makes a Mark.		PROJECT KENTON COUNTY SCHOOL DISTRICT
PROJECT NO.	22-106	SHEET TITLE PROPOSED NEW LAYOUT WITHOUT LOWER LEVEL (BASEMENT)
ISSUE DATE		
REVISION NO.		



LEGEND

- RED = RELOCATED LOWER LEVEL PROGRAM AREAS
- MAGENTA = RELOCATED PROGRAM ON SAME LEVEL
- ORANGE = EXPANDED BUILDING FOOTPRINT

<div><div>emboss</div><div>Design that Makes a Mark.</div></div>		PROJECT KENTON COUNTY SCHOOL DISTRICT
PROJECT NO.	22-106	SHEET TITLE PROPOSED NEW LAYOUT WITHOUT LOWER LEVEL (BASEMENT)
ISSUE DATE		
REVISION NO.		