

Harrison Elementary School-Preschool Addition & HVAC Upgrade

Lexington, Kentucky

for the

Fayette County Board of Education

450 Park Place, Lexington, Kentucky 40511

p 859.381.4100

BG # 23-124

RTA # 2251



INDEX OF DRAWINGS

- G0.0 COVER SHEET
- G1.0 CODE REVIEW
- G1.2 PHASING PLAN
- SS1.0 SURVEY
- SD0.1 EPSC PLAN
- SD0.2 SITE DEMOLITION PLAN
- SD1.1 SITE DEVELOPMENT PLAN
- SD1.2 SITE LAYOUT PLAN
- SD2.1 SITE GRADING PLAN
- SD2.2 SITE DRAINAGE PLAN
- SD3.1 ALTERNATE#1 SITE DEVELOPMENT PLAN
- SD3.2 ALTERNATE#2 SITE DEVELOPMENT PLAN
- SD4.1 SITE DRAINAGE DETAILS
- SD4.2 SITE DETAILS
- SD4.3 SITE DETAILS
- SD4.4 SITE DETAILS
- S0.1 STRUCTURAL NOTES
- S0.2 STRUCTURAL QUALITY ASSURANCE PLAN
- S1.1 LOWER LEVEL FOUNDATION PLAN
- S1.2 LEVEL 1 FOUNDATION PLAN
- S2.1 FOUNDATION SECTIONS AND DETAILS
- S2.2 FOUNDATION SECTIONS AND DETAILS
- D1.1 DEMOLITION PLAN
- A0.1 GENERAL ARCHITECTURAL DETAILS
- A1.1 OVERALL & BASEMENT PLAN
- A1.2 ENLARGED FLOOR PLANS
- A2.1 FLOOR PLANS FF&E
- A4.1 BUILDING SECTIONS & ELEVATIONS
- A5.1 WALL SECTIONS
- A5.2 WALL SECTIONS
- A6.1 DOORS AND FRAME SCHEDULE
- A7.1 REFLECTED CEILING - FIRST FLOOR
- A7.2 REFLECTED CEILING - SECOND FLOOR
- A8.1 ALTERNATE #4
- F2.0 FIRE PROTECTION DETAILS
- F2.1 ENLARGED FIRE PROTECTION PLAN
- M0.0 MECHANICAL SYMBOLS
- M1.0 MECHANICAL SITE DEMOLITION PLAN
- M1.1 BASEMENT AND FIRST FLOOR HVAC DEMOLITION PLAN
- M1.2 SECOND FLOOR HVAC DEMOLITION PLAN
- M2.1 ENLARGED UNDERFLOOR PLUMBING PLAN
- M2.2 ENLARGED PLUMBING PLAN
- M2.3 ENLARGED DOMESTIC WATER PLAN
- M3.1 WASTE & VENT RISER DIAGRAMS
- M3.2 DOMESTIC RISER DIAGRAM
- M4.1 FIRST FLOOR HVAC PLAN
- M4.2 SECOND FLOOR HVAC PLAN
- M4.3 ENLARGED HVAC PIPING PLAN
- M4.4 ENLARGED HVAC PLAN
- M6.1 PLUMBING DETAILS AND SCHEDULES
- M6.2 MECHANICAL SCHEDULES
- M6.3 MECHANICAL DETAILS
- M7.1 MECHANICAL SITE PLAN
- E0.0 ELECTRICAL SYMBOLS AND ABBREVIATIONS
- E1.0 SITE UTILITIES DEMOLITION PLAN
- E1.1 ENLARGED FIRST FLOOR ELECTRICAL DEMOLITION PLAN
- E1.2 ENLARGED SECOND FLOOR ELECTRICAL DEMOLITION PLAN
- E2.1 ENLARGED LIGHTING PLAN
- E3.1 ENLARGED POWER PLAN
- E3.2 ENLARGED FIRST FLOOR MECHANICAL POWER PLAN
- E3.3 ENLARGED SECOND FLOOR MECHANICAL POWER PLAN
- E4.1 ENLARGED TECHNOLOGY PLAN
- E5.1 SITE UTILITIES PLAN
- E6.1 ELECTRICAL SINGLE LINE DIAGRAM & SCHEDULES
- E7.1 ELECTRICAL DETAILS



101 old lafayette avenue
lexington, kentucky 40502
p 859.254.4018
www.rosstarrant.com

COVER SHEET
HARRISON ELEMENTARY SCHOOL - PRESCHOOL ADDITION
FOR:
FAYETTE COUNTY BOARD OF EDUCATION
450 PARK PLACE, LEXINGTON, KY 40511

enhancing education through great design

STRUCTURAL ENGINEER: STRUCTURAL DESIGN GROUP, INC.
220 Great Circle Road, Suite 106 Nashville, Tennessee 37228
p 615.255.5537

M.E.P. ENGINEER: KFI ENGINEERS.
3264 Loch Ness Drive Lexington, Kentucky 40517
p 859.271.3246

HARDWARE CONSULTANT: CALVERT INDEPENDENT HARDWARE SPECIFICATIONS, LLC
307 Oakwood Circle Vine Grove, Kentucky 40175
p 502.930.2039

PROJECT SITE ADDRESS:

161 Bruce St.
Lexington, Kentucky 40507

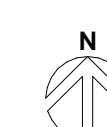
VICINITY MAP



SITE



PROJECT VICINITY MAP



M.E.P. Engineer:
KFI Engineers
3264 Loch Ness Dr.
Lexington, KY 40517
p 859.271.3246
Structural Engineer:
Structural Design Group, Inc.
220 Great Circle Rd. Suite 106
Nashville, TN 37228
p 615.255.5537
Hardware Consultant:
Calvert Independent Hardware
Specification, LLC.
307 Oakwood Circle
Vine Grove, KY 40175
p 502.930.2039

BG# 23-124

Project No: 2251
Drawn By: FB/CK
Rev'd By: MH

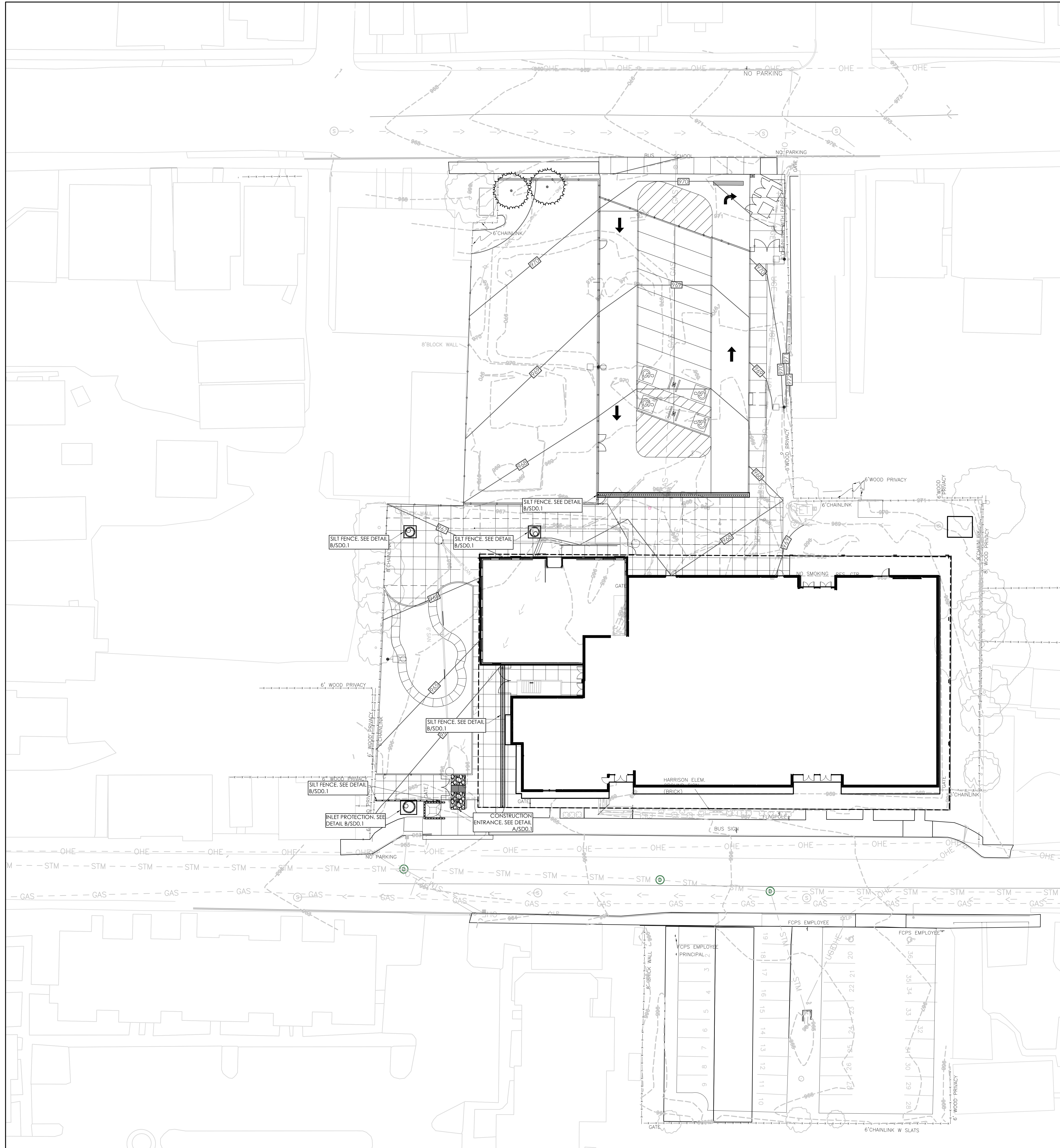
SHEET RELEASE

1	
2	
3	
4	
5	
6	
7	
8	

COPYRIGHT © 2022
CONSTRUCTION DOCUMENTS

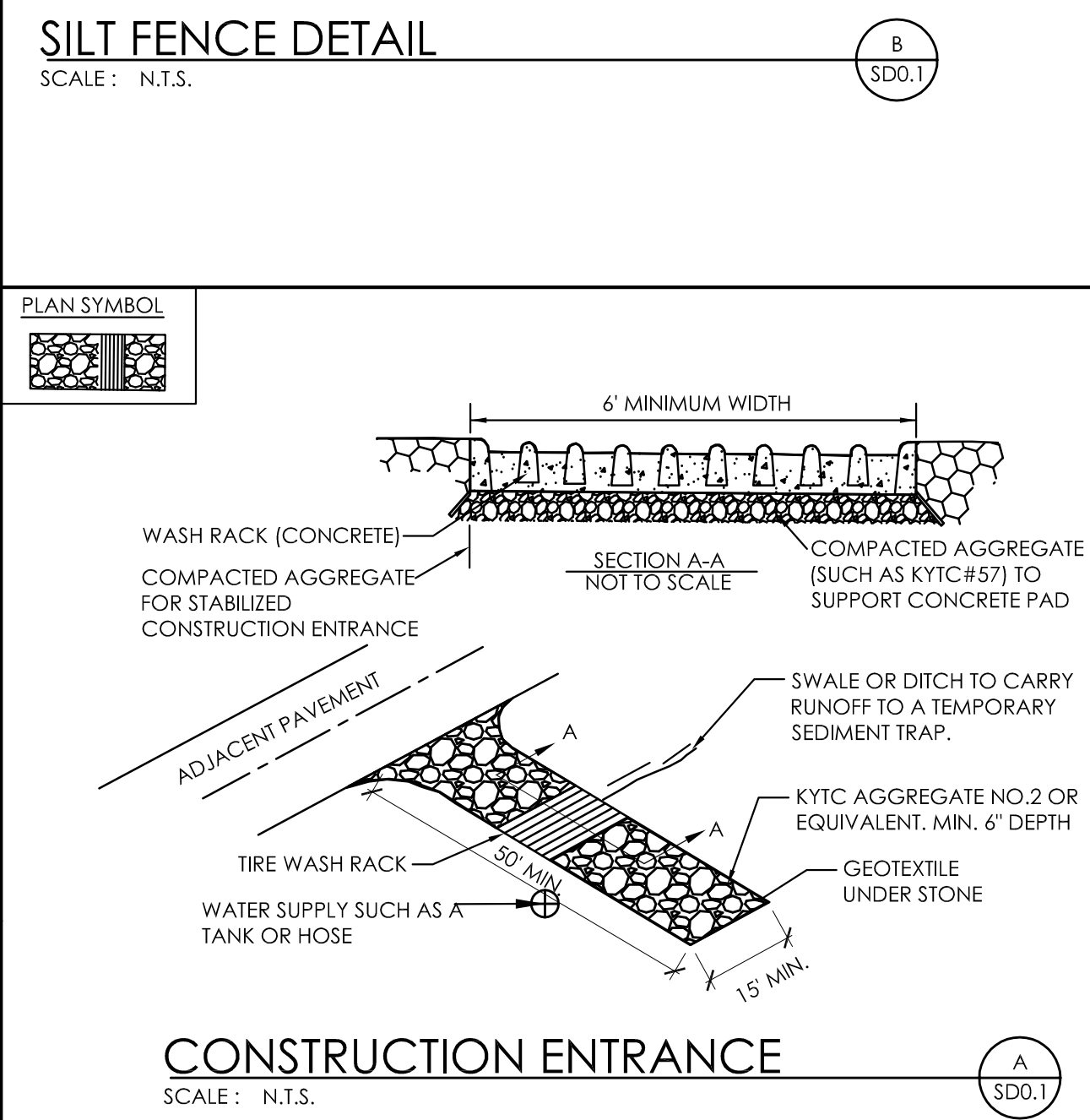
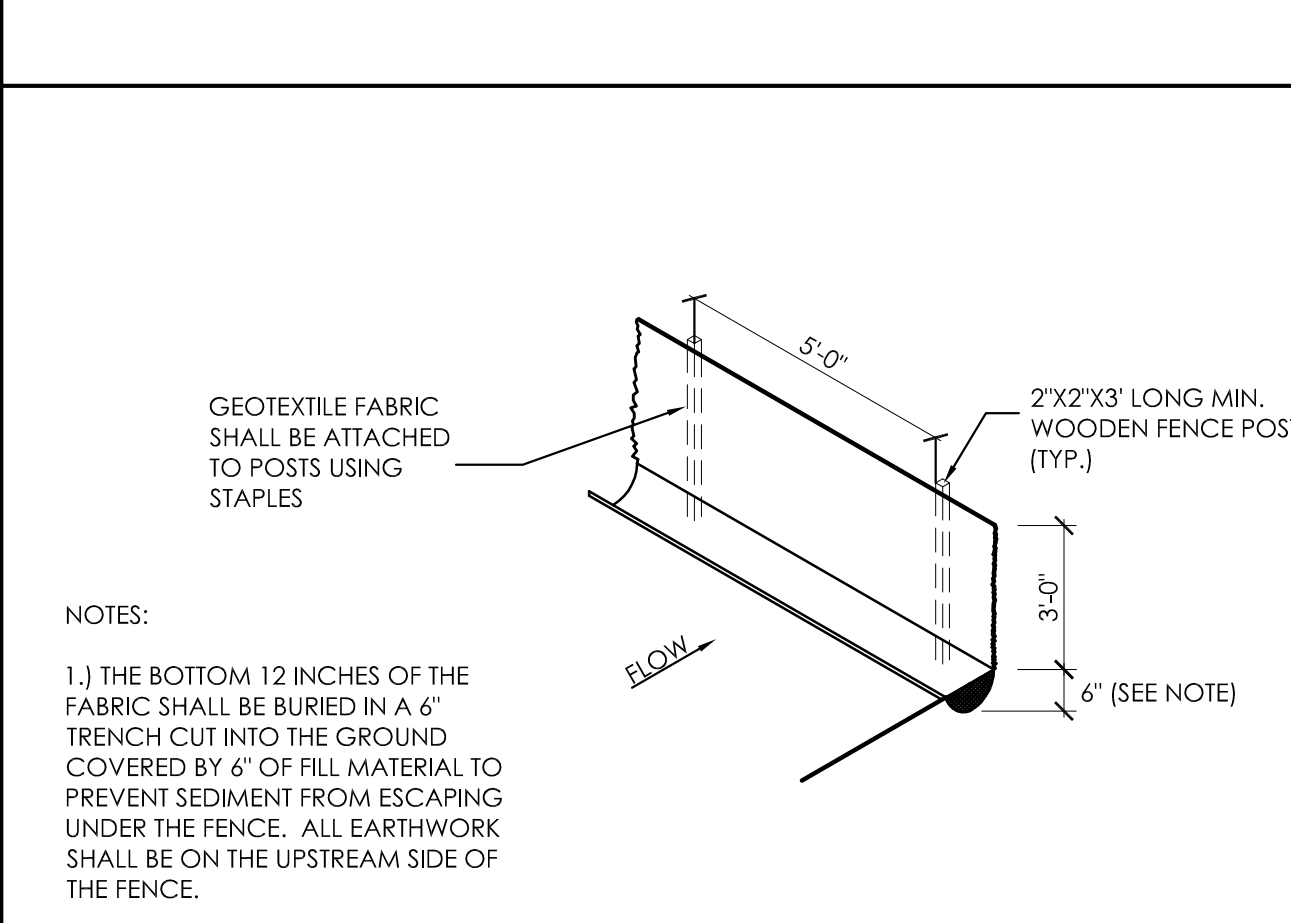
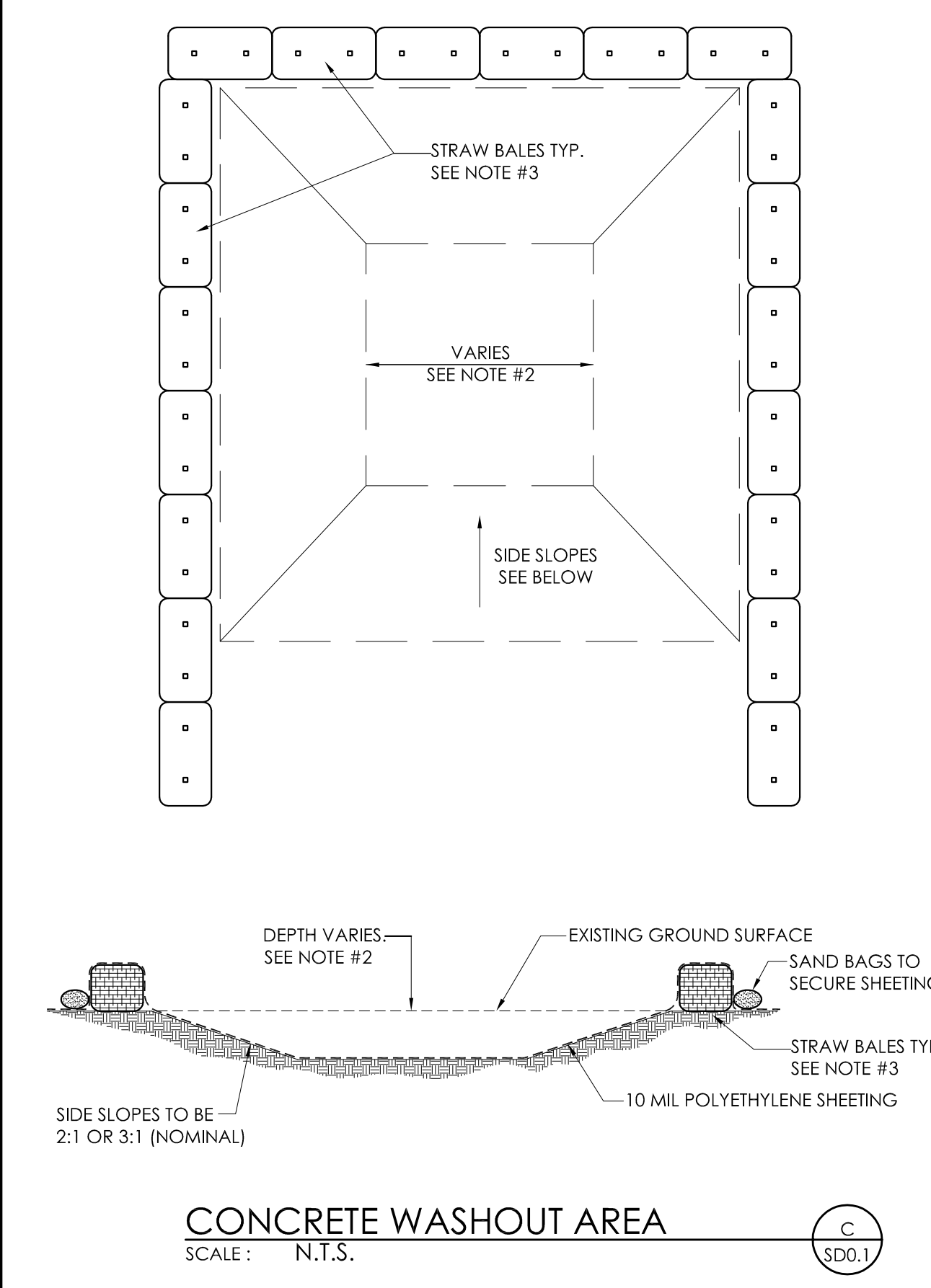
G0.0

COVER SHEET
DATE ISSUED:
09/15/2023



PLAN SYMBOL

- CONCRETE WASHOUT AREA(S) SHALL BE INSTALLED PRIOR TO ANY CONCRETE PLACEMENT ON SITE. THE CONCRETE WASHOUT AREA SHALL BE ENTIRELY SELF CONTAINED. LOCATION TO BE COORDINATED WITH THE CONSTRUCTION MANAGER AND THE OWNER.
- THE CONTRACTOR SHALL SUBMIT THE DESIGN, LOCATION AND SIZING OF THE CONCRETE WASHOUT AREAS TO THE ARCHITECT FOR APPROVAL PRIOR TO ANY CONCRETE PLACEMENT. COORDINATE LOCATION WITH THE EROSION POLLUTION AND SEDIMENT CONTROL PLAN.
LOCATION: WASHOUT AREA(S) TO BE LOCATED AT LEAST 50-FEET FROM STREAM, WETLAND, STORM DRAINS OR OTHER SENSITIVE RESOURCE. THE FLOOD CONTINGENCY PLAN MUST ADDRESS THE CONCRETE WASHOUT IF THE WASHOUT IS TO BE LOCATED WITHIN THE FLOOD PLANE.
SIZE: THE WASHOUT MUST HAVE SUFFICIENT VOLUME TO CONTAIN ALL LIQUID AND CONCRETE WASTE GENERATED BY WASHOUT OPERATIONS INCLUDING, BUT NOT LIMITED TO OPERATIONS ASSOCIATED WITH GROUT AND MORTAR.
- SURFACE DISCHARGE IS UNACCEPTABLE. THEREFORE, STRAW BALES OR OTHER CONTROL MEASURES, AS APPROVED BY THE ARCHITECT, SHOULD BE USED AROUND THE PERIMETER OF THE CONCRETE WASHOUT AREA FOR CONTAINMENT.
- SIGNS SHOULD BE PLACED AT THE CONSTRUCTION ENTRANCE, AT THE CONCRETE AREA(S) AND ELSEWHERE AS NECESSARY TO CLEARLY INDICATE THE LOCATION OF THE CONCRETE WASHOUT TO OPERATORS OF CONCRETE TRUCKS AND PUMP RIGS. WASHOUT AREA(S) SHOULD BE FLAGGED WITH SAFETY FENCING.
- WASHOUT AREA(S) ARE TO BE INSPECTED, CLEANED AND REPAIRED AFTER EACH RAIN EVENT OF 0.5-INCHES OR MORE, BUT NO LESS THAN ONCE A WEEK FOR STRUCTURAL INTEGRITY, ADEQUATE HOLDING CAPACITY AND CHECKED FOR LEAKS, TEARS OR OVERFLOWS.
- HARDENED CONCRETE WASTE SHOULD BE REMOVED AND DISPOSED OF IN A MANNER CONSISTENT WITH ALL APPLICABLE LAWS, REGULATIONS AND GUIDELINES WHEN THE WASTE HAS ACCUMULATED TO HALF OF THE CONCRETE WASHOUTS HEIGHT.



GENERAL SITE NOTES

- THE SITE PLANS WERE PREPARED BASED UPON TOPOGRAPHIC SURVEYS BY ABBE JONES CONSULTING, 1022 FONTAINE ROAD, LEXINGTON, KY 40502. REFER TO SITE SURVEY SHEETS.
- THE CONTRACTOR SHALL FIELD VERIFY ALL EXISTING SITE FEATURES AND CONDITIONS, REPORT ANY DISCREPANCIES TO THE ARCHITECT PRIOR TO THE START OF CONSTRUCTION.
- THE ARCHITECT AND ARCHITECT'S CONSULTANTS SHALL HAVE NO RESPONSIBILITY FOR THE DISCOVERY, PRESENCE, HANDLING, REMOVAL OR DISPOSAL OF, OR EXPOSURE OF PERSONS TO HAZARDOUS MATERIALS IN ANY FORM AT THE PROJECT SITE, INCLUDING BUT NOT LIMITED TO ASBESTOS, ASBESTOS PRODUCTS, POLYCHLORINATED BIPHENYL (PCB) OR OTHER TOXIC SUBSTANCES.
- THE CONTRACTOR SHALL USE EXTREME CARE IN WORKING AROUND EXISTING OVERHEAD AND UNDERGROUND UTILITIES. MEASURES SHOULD BE TAKEN TO PROTECT ALL UTILITIES FROM DAMAGE DURING CONSTRUCTION.
- SEE EROSION POLLUTION AND SEDIMENT CONTROL PLAN ON THIS SHEET FOR RECOMMENDED BEST MANAGEMENT PRACTICES INFORMATION AND SEDIMENT CONTROLS.

SITE BMP NOTES

- CONTRACTOR IS TO PROVIDE ALL KPDES PERMITS, NOTICES OF INTENT (NOIS) AND NOTICES OF TERMINATION INCLUDING EROSION AND SEDIMENT CONTROL PLANS FOR ALL PHASES OF CONSTRUCTION. ALL KPDES AND RELATED DIVISION OF WATER REQUIREMENTS SHALL BE THE RESPONSIBILITY OF THE CONTRACTOR UNTIL THE PROJECT IS CLOSED OUT AND THE NOTICE OF TERMINATION APPROVED.
- SEDIMENT CONTROL FENCING SHOWN AND REFERENCES TO SEDIMENT CONTROLS AT STORM WATER STRUCTURES AND ELSEWHERE ON THE DOCUMENTS ARE NOT TO BE USED FOR DIVISION OF WATER REQUIREMENTS. THESE REFERENCES ARE ONLY REQUIRED BY THE DESIGNER FOR PROPER MAINTENANCE OF THE STORM WATER SYSTEM AND TO MINIMIZE CLEANING OF THE SYSTEM AND PAVEMENTS.
- EXISTING VEGETATION IS TO BE LEFT INTACT UNTIL CONSTRUCTION IN THAT PARTICULAR LOCATION IS REQUIRED. SOIL STABILIZATION PRACTICES (SEEDING, MULCHING, ETC.) ARE TO BEGIN WITHIN 14 DAYS OF PERMANENT COMPLETION OR TEMPORARY HALT (21 DAYS OR MORE) OF WORK IN ANY PARTICULAR AREA.
- PERIMETER SEDIMENT AND EROSION CONTROLS ARE TO BE INSTALLED PRIOR TO THE START OF SITE CLEARING AND GRUBBING. EROSION CONTROLS SHALL BE IN ACCORDANCE WITH KYTC. CONTROL SHALL BE ACCOMPLISHED BY USE OF INTERCEPTOR DITCHES, TRICH SILT CHECKS, TEMPORARY SEEDING AND OTHER MEASURES AS MAY BE EFFECTIVE IN ACHIEVING THE DESIRED EFFECT. SILT FENCE SHALL BE INSTALLED TO PREVENT EROSION AND WASH-OFF ONTO WALKS, PAVEMENTS AND ALL ADJOINING PROPERTIES.
- INSTALL SEDIMENT CONTROL FENCE OR SEDIMENT TRAPS AROUND ALL STORM WATER INLETS AND MAINTAIN UNTIL VEGETATION IS ESTABLISHED OR AREA PAVED AS APPROVED BY THE ARCHITECT. STORM WATER INLET PROTECTION IS TO BE INSTALLED IMMEDIATELY AFTER INSTALLATION OF THE STRUCTURES. REMOVE PROTECTIONS AT THE COMPLETION OF THE PROJECT WHEN CONDITIONS NO LONGER WARRANT THEIR USE. SEE EROSION POLLUTION AND SEDIMENT CONTROL PLAN FOR DETAILS.
- TYPICAL SILT FENCE AND SEDIMENT TRAP INSTALLATION DETAILS ARE SHOWN ON THE EROSION POLLUTION AND SEDIMENT CONTROL PLAN. SEE KYTC STANDARDS FOR INFORMATION CONCERNING THE STONE SILT CHECKS.
- SEDIMENT CONTROLS ARE TO BE INSPECTED, CLEANED AND REPAIRED AFTER EACH RAIN EVENT OF 0.5 INCHES OR MORE, BUT NO LESS THAN ONCE PER WEEK. A LOG OF INSPECTIONS AND CLEANING IS TO BE KEPT ON SITE.
- THE LOCATIONS OF SEDIMENT CONTROLS SHOWN ARE FOR GENERAL PROTECTION PRACTICES AND NOT AS PART OF A BMP PLAN. IF CONSTRUCTION ACTIVITIES PRODUCE CONDITIONS THAT REQUIRE ADDITIONAL CONTROLS, IT IS THE CONTRACTORS RESPONSIBILITY TO PROVIDE, INSTALL AND MAINTAIN THE CONTROLS UNTIL CONDITIONS NO LONGER WARRANT THEIR USE.
- ALL STORM DRAINAGE CATCH BASINS, CURB INLETS, AND JUNCTIONS BOXES ARE TO RECEIVE PROTECTION FROM SEDIMENTATION. AT A MINIMUM A PERIMETER SILT FENCE SHOULD BE INSTALLED AROUND THE DRAINAGE STRUCTURE AND INSTALLED UNDER THE GRATE.
- LOCATION OF CONSTRUCTION ENTRANCE TO BE COORDINATED WITH OWNER. SEE DETAIL A/SDO.1.
- LOCATION OF CONCRETE WASHOUT AREA TO BE COORDINATED WITH OWNER. SEE DETAIL C/SDO.1.

LEGEND

- SEDIMENT CONTROL FENCE. ADDITIONAL FENCE MAY BE REQUIRED AT OTHER AREAS DURING CONSTRUCTION. SEE DETAIL B/SDO.1.
- LIMITS OF CONSTRUCTION
- INLET PROTECTION. SEE DETAIL B/SDO.1

rosstarrant architects
100 delawareville avenue lexington, kentucky 40502 p 859.254.4018

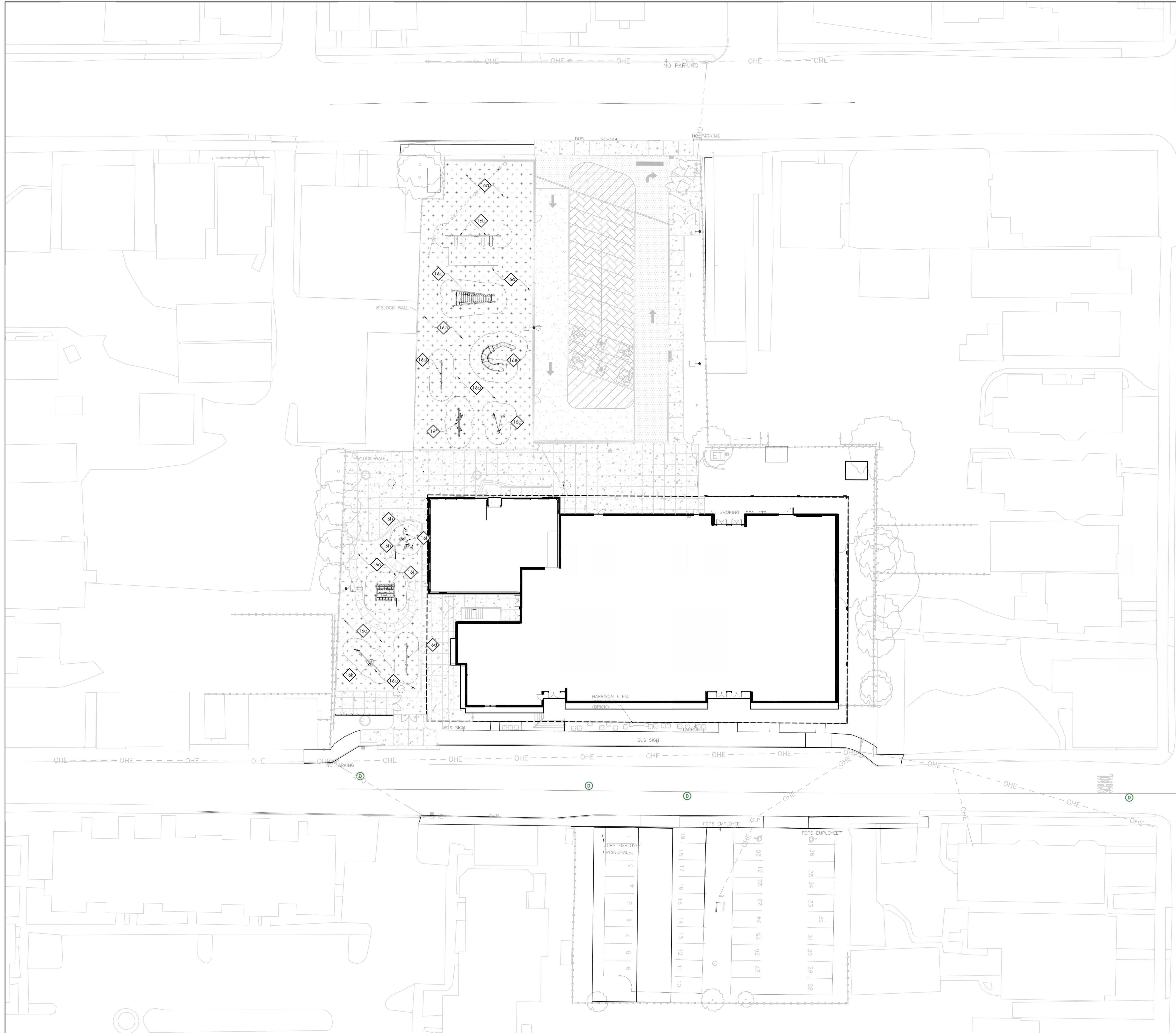
EROSION POLLUTION SEDIMENT CONTROL PLAN
HARRISON ELEMENTARY SCHOOL - PRESCHOOL ADDITION
FOR:
FAYETTE COUNTY BOARD OF EDUCATION
450 PARK PLACE, LEXINGTON, KY 40511

M.E.&P. Engineer:
KRI Engineers,
3244 Lochness Dr.
Lexington, KY 40517
p 859.271.3246
Structural Engineer:
Structural Design Group, Inc.
220 Great Circle Rd. Suite 106
Nashville, TN 37228
p 615.255.5537

BG# 23-124
Project No: 2251
Drawn By: EGS, ELM
Rev'd By: KAM, SL, LMR
SHEET RELEASE
1
2
3
4
5
6
7
8
COPYRIGHT © 2023
CONSTRUCTION DOCUMENTS
SDO.1
EPSC PLAN
DATE ISSUED:
07/11/2023

EROSION POLLUTION SEDIMENT CONTROL PLAN
SCALE: 1"=20'





GENERAL SITE NOTES

- THE SITE PLANS WERE PREPARED BASED UPON TOPOGRAPHIC SURVEYS BY ABBE JONES CONSULTING, 1022 FONTAINE ROAD, LEXINGTON, KY 40502. REFER TO SITE SURVEY SHEETS.
- THE CONTRACTOR SHALL FIELD VERIFY ALL EXISTING SITE FEATURES AND CONDITIONS, REPORT ANY DISCREPANCIES TO THE ARCHITECT PRIOR TO THE START OF CONSTRUCTION.
- THE ARCHITECT AND ARCHITECT'S CONSULTANTS SHALL HAVE NO RESPONSIBILITY FOR THE DISCOVERY, PRESENCE, HANDLING, REMOVAL OR DISPOSAL OF, OR EXPOSURE OF PERSONS TO HAZARDOUS MATERIALS IN ANY FORM AT THE PROJECT SITE, INCLUDING BUT NOT LIMITED TO ASBESTOS, ASBESTOS PRODUCTS, POLYCHLORINATED BIPHENYL (PCB) OR OTHER TOXIC SUBSTANCES.
- THE CONTRACTOR SHALL USE EXTREME CARE IN WORKING AROUND EXISTING OVERHEAD AND UNDERGROUND UTILITIES. MEASURES SHOULD BE TAKEN TO PROTECT ALL UTILITIES FROM DAMAGE DURING CONSTRUCTION.
- SEE EROSION POLLUTION AND SEDIMENT CONTROL PLAN ON SD0.1 FOR RECOMMENDED BEST MANAGEMENT PRACTICES INFORMATION AND SEDIMENT CONTROLS.

SITE DEVELOPMENT TAGS

- 0 EXISTING TO REMAIN. PROTECT THROUGHOUT CONSTRUCTION.
 - (a) BUILDING TO REMAIN. NO UTILITIES TO THESE FACILITIES ARE TO BE REMOVED UNLESS NEW PERMANENT UTILITY IS PROVIDED PRIOR TO DEMOLITION.
 - (b) PAVEMENT TO REMAIN - PATCH/REPAIR WHERE DAMAGED BY CONSTRUCTION. SAW-CUT TO PROVIDE CLEAN EDGE. CONCRETE PAVING TO BE SAW-CUT BACK TO NEAREST UNDAUNAGED CONTROL OR ISOLATION JOINT. MATCH NEW ADJACENT PAVEMENT TO EXISTING PAVEMENT ELEVATIONS.
 - (c) TREE/VEGETATION TO REMAIN.
 - (d) UTILITY TO REMAIN.
 - (e) STORM LINE/STRUCTURE TO REMAIN
 - (f) SIGN TO REMAIN.
 - (g) FENCING TO REMAIN.
 - (h) WALL TO REMAIN.
 - (i) CONCRETE STAIRS AND GUARDRAIL TO REMAIN. REFER TO PHASING PLAN FOR EGRESS REQUIREMENTS.
- 1 ASPHALT PAVING (321216).
 - (a) LIGHT DUTY ASPHALT. SEE DETAIL A/SD4.2.
 - (b) HEAVY DUTY ASPHALT PAVING. SEE DETAIL A/SD4.2.
- 2 CONCRETE PAVEMENT (321313, 321373)
 - (a) 4" DEPTH CONCRETE PAVEMENT. SEE DETAIL B/SD4.2.
 - (b) 8" DEPTH CONCRETE PAVEMENT. SEE DETAIL C/SD4.2.
 - (c) 4" DEPTH CONCRETE PAVEMENT WITH TURNDOWN CURB. SEE DETAIL X/SD4.2.
 - (d) 6" DEPTH CONCRETE PAVEMENT. SEE DETAIL B/SD4.2.
- 3 CONCRETE FILLED BOLLARD (055000). SEE DETAIL E/SD4.2.
- 4 TRAFFIC SIGNAGE (SINGLE POST). (101453)
 - (a) STOP SIGN. SEE DETAIL K/SD4.2.
 - (b) ACCESSIBLE PARKING SIGN. SEE DETAIL J/SD4.2.
 - (c) ONE WAY DO NOT ENTER SIGN. SEE DETAIL X/SD4.2.
- 5 CONCRETE CURB (321313, 321613, 321726)
 - (a) 6" WIDTH HEADER CURB. SEE DETAIL P/SD4.2.
 - (b) 6" FLUSH HEADER CURB. SEE DETAIL C/SD4.3.
 - (c) 12" CONCRETE FENCE BAND. SEE DETAIL D/SD4.2.
- 6 CONCRETE RAMP AND STAIR 'A' (321313). SEE DETAIL B,E,&F/SD4.2.
- 7 PAINTED PAVEMENT MARKINGS. (321723.13)
 - (a) 4" PAVING STRIPING, WHITE.
 - (b) ACCESSIBLE PARKING STRIPING. SEE DETAIL F/SD4.2.
 - (c) PAINTED TRAFFIC STOP BAR, 12"X12", WHITE.
 - (d) PAINTED TRAFFIC ARROW. SEE DETAIL I/SD4.2.
- 8 ORNAMENTAL FENCING (323119, 323131)
 - (a) 8'-0" HEIGHT ORNAMENTAL FENCE. SEE DETAIL B/SD4.4.
 - (b) 8'-0" HEIGHT DOUBLE SWING ORNAMENTAL GATE. SEE DETAIL C/SD4.4.
- 9 VINYL COATED CHAIN LINK FENCING. (323113)
 - (a) 3'-6" HEIGHT FENCE. SEE DETAIL M/SD4.2.
 - (b) 3'-6" HEIGHT PEDESTRIAN GATE. SEE DETAIL N/SD4.2.
 - (c) 3'-6" HEIGHT DOUBLE GATE. SEE DETAIL O/SD4.2.
 - (d) 8'-0" HEIGHT FENCE. SEE DETAIL D/SD4.4.
 - (e) 8'-0" HEIGHT 4'-0" WIDTH PEDESTRIAN GATE. SEE DETAIL F/SD4.4.
 - (f) 8'-0" HEIGHT DOUBLE GATE. SEE DETAIL E/SD4.4.
 - (g) 8'-0" HEIGHT ROLLER GATE. SEE DETAIL A/SD4.4.
- 10 UTILITY STRUCTURE. SEE MEP DRAWINGS FOR ADDITIONAL INFORMATION.
 - (a) NEW UTILITY.
 - (b) SITE LIGHTING.
- 11 STRUCTURE. SEE ARCHITECTURAL AND STRUCTURAL DRAWINGS FOR ADDITIONAL INFORMATION.
- 12 DUMPSTER PROVIDED BY OWNER.
- 13 CONCRETE WHEEL STOP. SEE DETAIL G/SD4.2.
- 14 PLAY SURFACING AND EQUIPMENT. N.I.C. CONTRACTOR IS RESPONSIBLE FOR AGGREGATE BASE AND DRAINAGE WORK ASSOCIATED WITH SURFACING. SEE DETAIL X/SD4.1.
- 15 PERMEABLE PAVERS. SEE DETAIL G/SD4.4.
- 16 ALTERNATE #1: PLAY EQUIPMENT AND SURFACING OPTION 1
 - (a) POURED-IN-PLACE SURFACING. SEE DETAIL X/SD4.2.
 - (b) FORMA SWING FRAME
 - (c) FORTRESS MULTI-CLIMBER
 - (d) FOCAL SENSORY WALL
 - (e) FORMA SLIDEWINDER2
 - (f) FOXDEN HANGOUTS
 - (g) FORMA SOL SPINNER
 - (h) 8" FOOTPRINT STEPPER
 - (i) 16" FOOTPRINT STEPPER
 - (j) FOXTROT MULTI-CLIMBER
 - (k) FORMA GIGGLE JIGGLER
- 17 ALTERNATE #2: PLAY EQUIPMENT AND SURFACING OPTION 2
 - (a) POURED-IN-PLACE SURFACING. SEE DETAIL X/SD4.2.
 - (b) HEDRA SWING FRAME
 - (c) HEDRA EN WITH SLIDEWINDER
 - (d) VIBRA CHIMES, FULL SET
 - (e) WE-SAW
 - (f) BOBBLE RIDER
 - (g) COZY DOME
 - (h) SENSORY WALL
 - (i) 8" MUSHROOM CLIMBER
 - (j) 10" MUSHROOM CLIMBER
 - (k) 16" MUSHROOM CLIMBER
 - (l) 20" MUSHROOM CLIMBER
 - (m) 24" MUSHROOM CLIMBER
 - (n) 30" MUSHROOM CLIMBER
 - (o) DOUBLE BOBBLE RIDER
 - (p) SEESAW
 - (q) HEDRA SCOUT



ALTERNATE #1: SITE DEVELOPMENT PLAN
 HARRISON ELEMENTARY SCHOOL - PRESCHOOL ADDITION
 FOR:
 FAYETTE COUNTY BOARD OF EDUCATION
 450 PARK PLACE, LEXINGTON, KY 40511

M.E.P. Engineer:
 RR Engineers
 3244 Lochness Dr.
 Lexington, KY 40517
 p 859.271.3246
 Structural Engineer:
 Structural Design Group, Inc.
 220 Great Circle Rd. Suite 106
 Nashville, TN 37228
 p 615.355.5537

BG# 23-124
 Project No: 2251
 Drawn By: EGS, ELM
 Rev'd By: KAM, SL, LMR

SHEET RELEASE	
1	
2	
3	
4	
5	
6	
7	
8	

LEGEND

- PERMEABLE PAVERS
- CONCRETE PAVEMENT
- ASPHALT PAVEMENT
- POUR-IN-PLACE SURFACING
- HEAVY DUTY ASPHALT PAVEMENT
- SAFETY SURFACING AGGREGATE BASE

ALTERNATE #1: SITE DEVELOPMENT PLAN
SCALE: 1"=20'



COPYRIGHT © 2023
 CONSTRUCTION DOCUMENTS
SD3.1
 ALTERNATE #1: SITE DEVELOPMENT PLAN
 DATE ISSUED:
 07/11/2023

