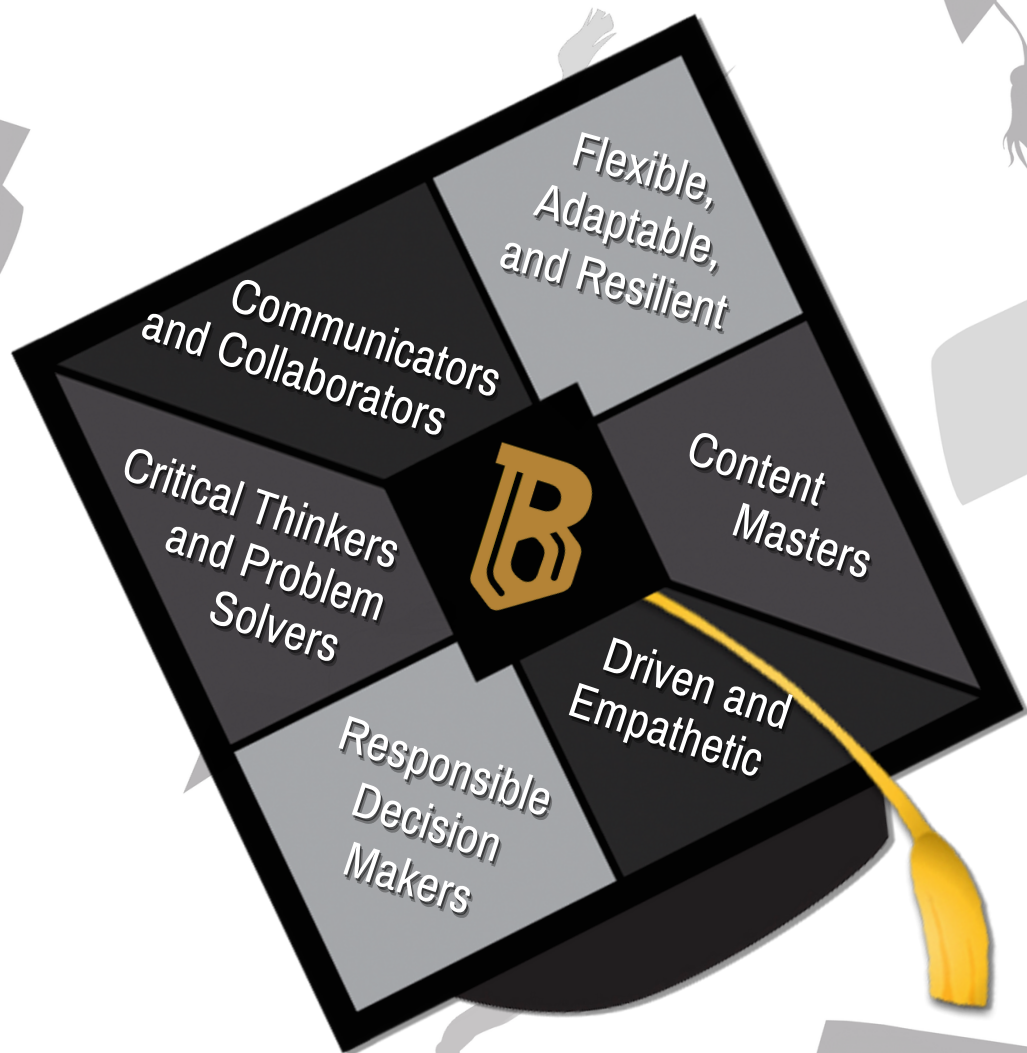


Portrait of a

BELLEVUE GRADUATE



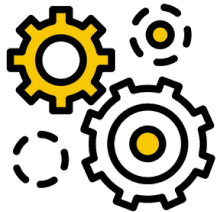
BELLEVUE GRADUATES ARE:



Critical Thinkers and Problem Solvers



Communicators and Collaborators



Flexible, Adaptable and Resilient



Content Masters

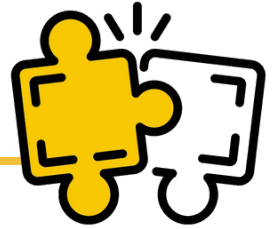


Responsible Decision Makers



Driven and Empathetic

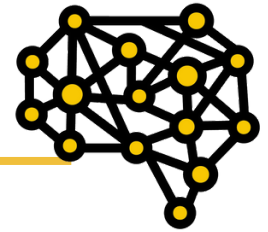
Critical Thinkers and Problem Solvers



Our Students:

- Understand the “bigger picture” and propose solutions that are mindful to the impact they may have on other parts of a system.
- Consistently improve the quality of one’s own thinking by skillfully analyzing, assessing, and reconstructing.
- Applies disciplined thinking that is clear, rational, open-minded, and informed by evidence.
- Identify, evaluate, and prioritize solutions to difficult or complex situations.
- Implement and reflect critically on a solution.

Communicators & Collaborators



Our Students:

- Articulate thoughts and ideas effectively using oral, written, and nonverbal communication skills in a variety of forms and contexts.
- Listen effectively to decipher meaning, including knowledge, values, attitudes, and intentions.
- Use communication for a range of purposes and audiences (e.g. to inform, instruct, motivate, and persuade).
- Honor and leverage strengths to build collective commitment and action.
- Enrich the learning of both self and others.
- Seek, contribute, and respond to feedback to achieve collective outcomes.
- Elicit diverse perspectives and contributions.

Content Masters



Our Students:

- Develop and draw from a baseline understanding of knowledge in an academic discipline.
- Transfer knowledge in combination with new learning to deepen understanding and influence conclusions and solutions.
- Use content knowledge in routine, as well as innovative, ways in real-world situations.

Responsible Decision Makers



Our Students:

- Act honestly and demonstrate care for the interests of the larger community and greater good.
- Honor commitments and own the outcomes, whether positive or negative.

Flexible, Adaptable, and Resilient



Our Students:

- Work effectively in a climate of ambiguity and changing priorities.
- Demonstrate agility in thoughts and actions.
- Respond productively to feedback, praise, setbacks, and criticism.
- Understand, negotiate, and balance diverse views and beliefs to reach workable solutions.
- Demonstrate flexibility when acclimating to various roles and situations.
- Are able to withstand adversity and bounce back from difficult life events.
- Are able to be happy, successful, etc. again after something difficult or bad has happened.

Driven and Empathetic



Our Students:

- Take initiative and proactively organize tasks and actions prioritizing short-term and long-term goals.
- Initiate and take action independently, leveraging resources to accomplish goals.
- Demonstrate awareness, sensitivity, concern, and respect to connect with others' feelings, opinions, experiences, and culture.
- Imagine what others are thinking, feeling, or experiencing.
- Vicariously experience the feelings, thoughts, and experiences of others.
- Are self-aware.
- Practice persistence.