

CONTRACT

THIS CONTRACT is entered into this 22nd day of February, 2023 , by and between the **BOARD OF EDUCATION OF FAYETTE COUNTY, KENTUCKY**, 450 Park Place, Lexington, Kentucky 40511 ("Board") and **Aperture Education**, P.O. Box 1279, Fort Mill, SC 29715 ("Second Party").

A. PARTIES:

The Board of Education of Fayette County, Kentucky, **Department of Student Support Services** has established the need to **provide a research-based, strengths-based, social-emotional learning (SEL) assessment system to support continuous improvement in our district's supports for students** and has determined that this need cannot be met by existing district staff.

Aperture Education provides the platform through which the Deveraux Student Strengths Assessment (DESSA) is housed and reporting features are available at the classroom, school, and district level and has expertise or needed products as described herein.

B. PURPOSE:

The purpose of this contract is to improve the availability of **an research-based, strengths-focused SEL Assessment for use in grades K-12.**

NOW, THEREFORE, for and in consideration of the mutual promises set out herein, it is hereby agreed by and between the parties hereto as follows:

1. The Second Party shall provide to the **Department of Student Support Services**, as an independent contractor, services under the direction of **Dedeeh Newbern**.

2. The second party shall provide **twelve-month per student subscription for the DESSA-40, DESSA-mini (4 versions), Growth Strategies, Foundational Practices, and reporting for grades K-5. The second party shall also provide a twelve-month per student subscription for the DESSA-Student Self-Report Portal (which includes the student portal, assessment tool, growth strategies, data, reporting, and goal-setting features. The additional Pro Success package includes SSO for Clever, 24/7/365 support portal, custom trainings, SIS integration, Success Team Member, and automated data exports.**

3. The Board agrees to pay the Second Party for the services/products provided in this contract the amount of **\$228,112.50**. Additional expenses to be reimbursed are **none**, with a total amount of this contract not exceeding **\$228,112.50**.

4. The Second Party shall provide to the Fayette County Board of Education an invoice for services rendered under this contract and any agreed upon expenses to be reimbursed. Unless otherwise stated, travel and per diem shall be reimbursed based upon the district's current travel policies.

5. The Second Party is not debarred or suspended or otherwise excluded from or ineligible for participation in Federal assistance programs under Executive Order 12549, "Debarment and Suspension."

6. This contract may be re-negotiated based upon, but not limited to, increases in services to participants. Any modifications shall be agreed to in writing and signed by both parties.

7. The staff providing services to the Board herein are employees of the Second Party and shall not represent to anyone that they are employees or agents of the Board.

8. Either party shall have the right to terminate this agreement at any time upon a fourteen (14) day written notice, either personally delivered or served by some form of return receipt mail evidencing delivery, to the other party.

9. Each of the parties agrees to comply with all applicable law concerning the performance of the provisions of this contract.

10. The Second Party certifies that it shall not discriminate in any of the services performed in connection with this contract or in any program or activity it operates on the basis of race, color, national origin, religion, age, creed, political affiliation, marital status, sex, or disabling condition.

11. The Second Party certifies that it has read and will comply with the Family Education Rights

and Privacy Act ("FERPA"), 20 U.S.C. § 1232g; 34 CFR Part 99).

12. Any contractor who is permitted access to school grounds on regularly scheduled and continuing basis pursuant to a written agreement for the purpose of providing services directly to a student or students as part of a school- sponsored program or activity must submit to a national and state criminal history background check by the Department of Kentucky State Police and the Federal Bureau of Investigation and have a letter, provided by the individual, from the Cabinet for Health and Family Services ("CHFS") stating the contractor is clear to hire based on no finding of substantiated child abuse or neglect found through a background check of child abuse and neglect records maintained by the Cabinet for Health and Family Services. The required background checks and letter from CHFS must be submitted to the FCPS Human Resources Office prior to the beginning of work. Failure to comply with this statute will be considered a breach of contract and will subject the contract to cancellation without penalty.

13. KRS 45A.455 PROHIBITS CONFLICTS OF INTEREST, GRATUITIES, AND KICKBACKS TO EMPLOYEES OF THE BOARD OF EDUCATION IN CONNECTION WITH CONTRACTS FOR SUPPLIES OR SERVICES WHETHER SUCH GRATUITIES OR KICKBACKS ARE DIRECT OR INDIRECT. KRS 45A.990 PROVIDES SEVERE PENALTIES FOR VIOLATIONS OF THE LAWS RELATING TO GRATUITIES OR KICKBACKS TO EMPLOYEES WHICH ARE DESIGNED TO SECURE A PUBLIC CONTRACT FOR SUPPLIES OR SERVICES.

14. If any section, paragraph, or clause of this contract shall be held invalid by any court of competent jurisdiction, the invalidity of said section, paragraph, or clause shall not affect any remaining provisions herein.

15. This contract is deemed to be made under and shall be governed by and construed in accordance with the laws of the Commonwealth of Kentucky.

16. Venue for any legal action filed concerning this contract shall be Fayette County, Kentucky.

17. This writing reflects the entire agreement between the parties. No change or modification of this Agreement shall be valid or binding upon the parties hereto, nor shall any waiver of any terms or conditions hereof be deemed a waiver of such terms or conditions in the future, unless such change, modification or waiver shall be in writing and signed by the parties hereto.

18. This agreement will be in effect from **September 1, 2023**, through **August 31, 2024**, unless terminated by either party as defined in Paragraph 8. The agreement may be renewed annually based upon evaluation of the effectiveness of the agreement in meeting the goals set forth herein and funding availability.

IN WITNESS WHEREOF, the parties have executed this contract the day, month, and year above written.

Handwritten initials

Principal/Director's Approval

Date

Dr. Demetrus Liggins, Superintendent or Designee
BOARD OF EDUCATION OF FAYETTE COUNTY
KENTUCKY

Date

LEGAL IN:
CAB. IN:

Chief Executive Officer

Designee Title

Jessica Adamson

DocuSigned by:
Jessica Adamson
28E3B743E79A444...

Mar-01-2023

Aperture Education

Date

Social Emotional Learning Data

Department of Student Support
Services
April 2023

The Screening Tool

- To further the work of the 10-Point Safety Investment Plan and to strengthen supports for student social, emotional, & behavioral well-being, FCPS contracted with Aperture Education to implement a Social Emotional Learning assessment tool across grades K-12.
- Aperture is the digital platform that houses the DESSA (the Devereux Student Strengths Assessment).
- The DESSA is an empirically sound, standardized social and emotional competence assessment that has been normed for K-12.
- The district's second DESSA rating window was held from March 1-31, 2023.

More About the DESSA

- The DESSA provides a Social-Emotional Total (SET) score that provides an indication of a student's overall social and emotional competence at the time of the assessment.
- The DESSA aligns with CASEL's 5 Social and Emotional Competencies.



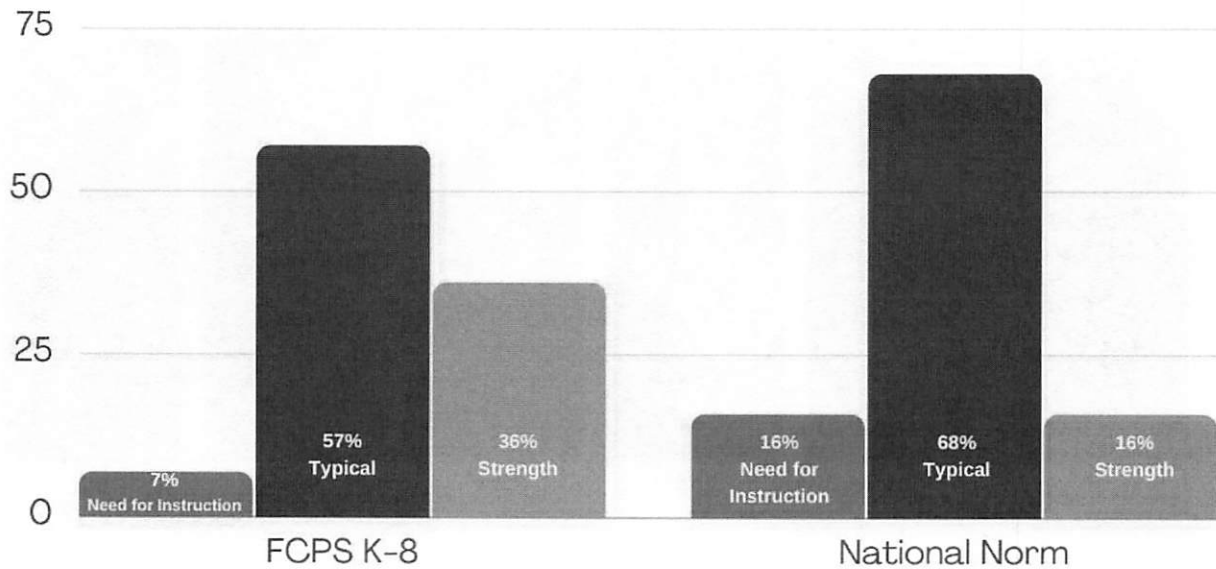
Descriptive Score Ranges

- The DESSA provides a T-score for each student.
 - A T-score is reported on a scale in which a score of 50 is the mean (with standard deviations of 10 points).
- As a strength-based measure, high T-scores mean a higher level of Social Emotional Competence at the time the measure is completed.

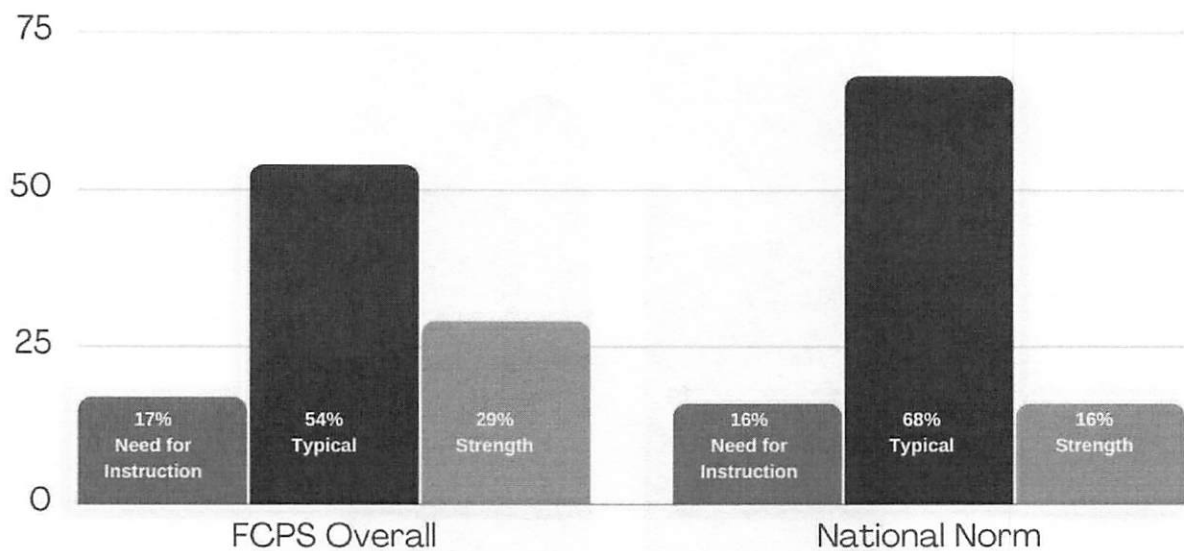
T-Scores & Descriptive Ranges		
T-Score: 40 & Below Need for Instruction	T-Score: 41-59 Typical	T-Score: 60 & above Strength



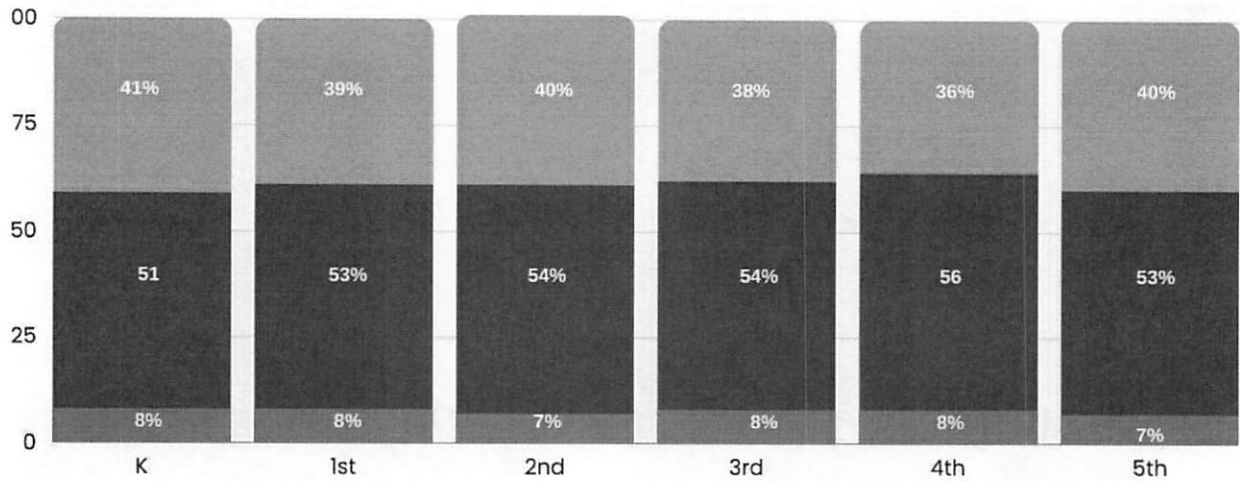
District Results Overview Grades K-8 DESSA and Grades 9-12 DESSA-HSE SSR



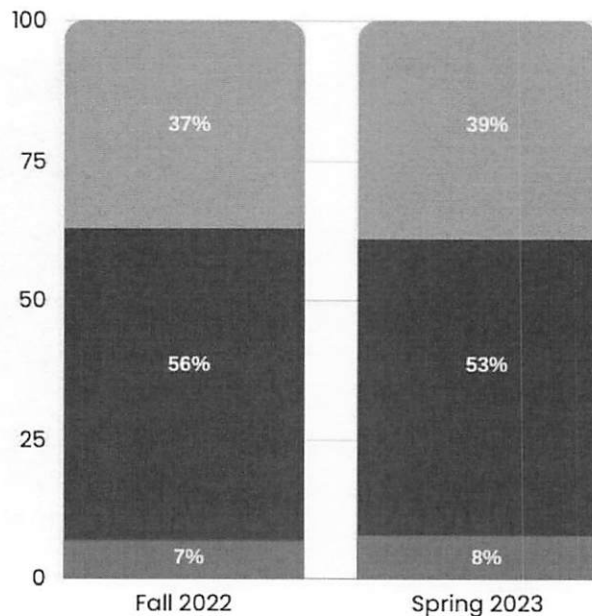
District Results Grades K-8 DESSA



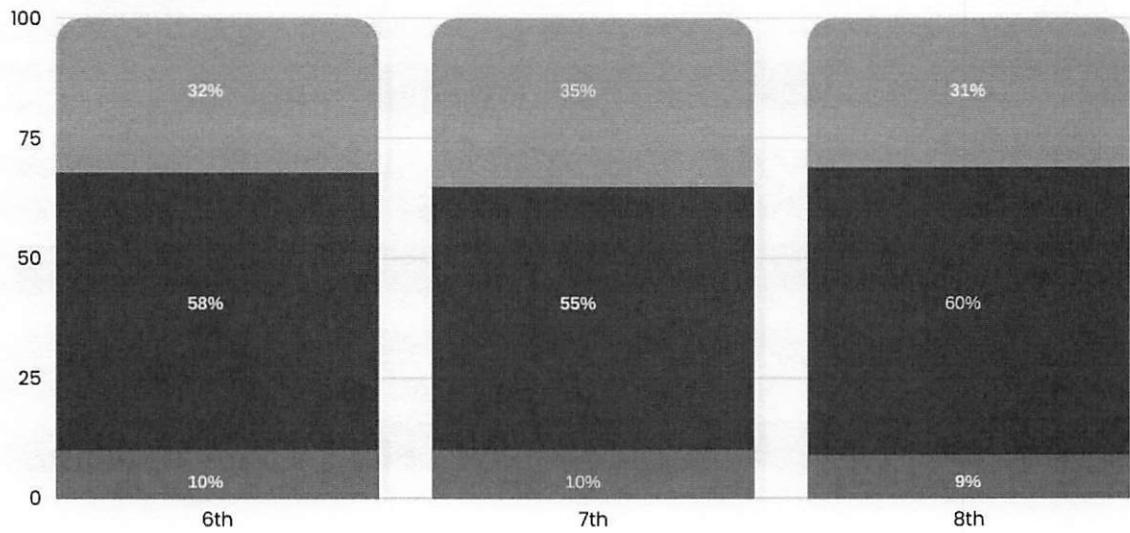
Elementary By Grade Level



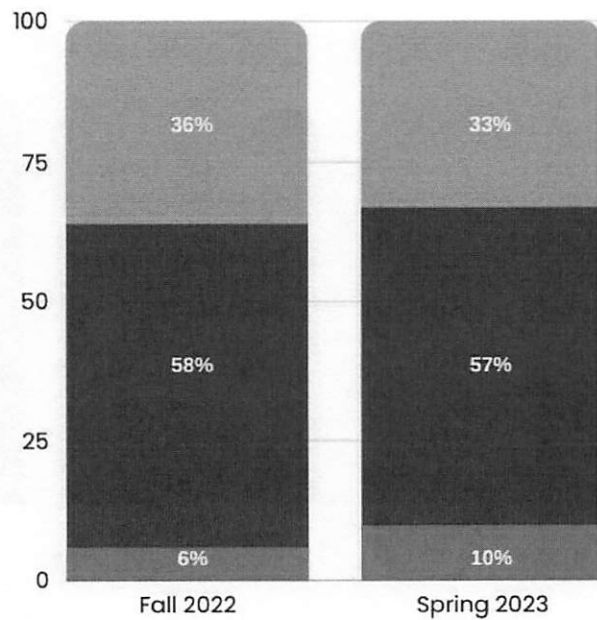
Elementary Fall to Spring Comparison



Middle School By Grade Level



Middle School Fall to Spring Comparison



High School Student Self-Report: Norms, Trends, & FCPS Data

Expected Scores Based on Established Norms



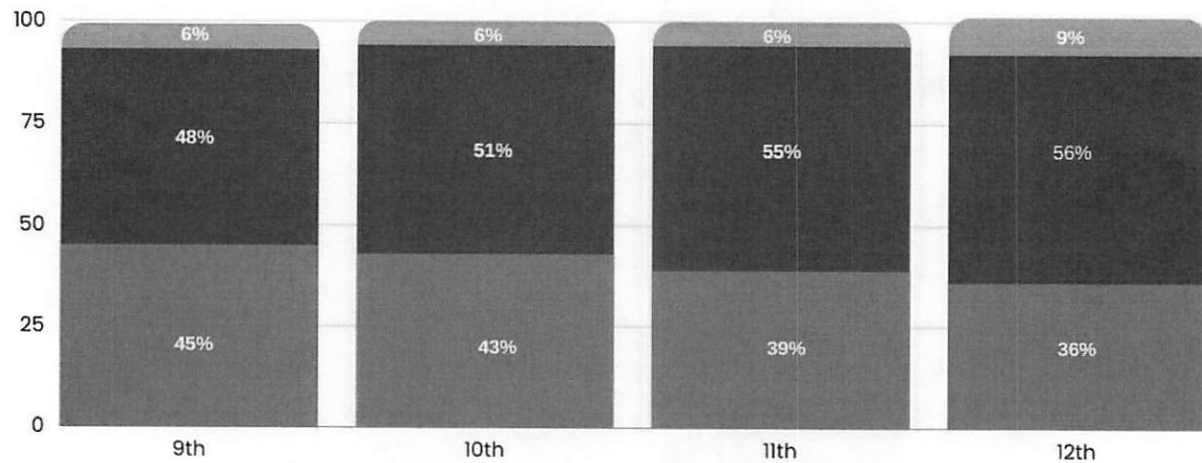
Recent High School Student Self-Report National Trends



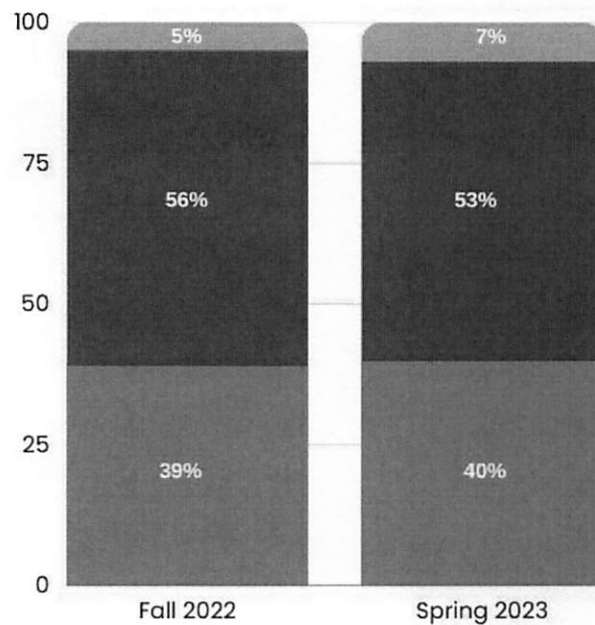
FCPS Student Self-Report Results



High School By Grade Level

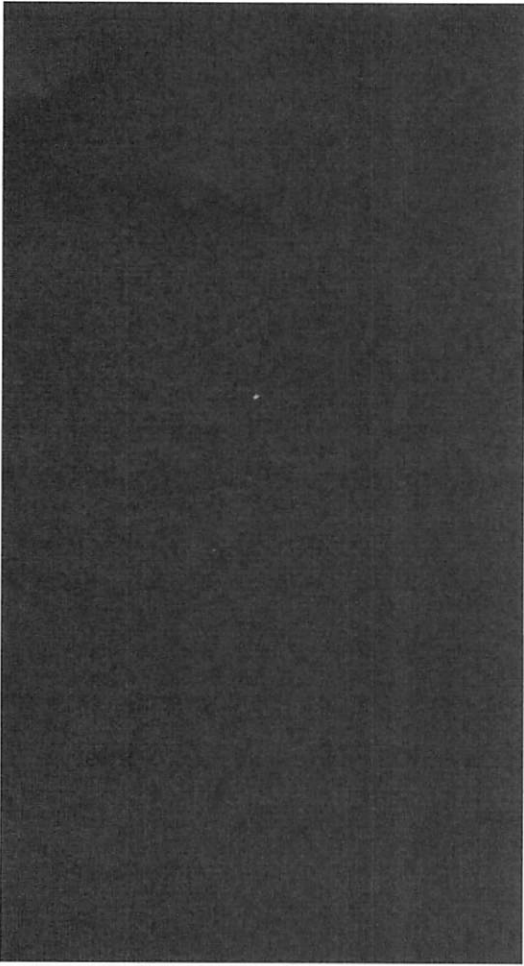


High School Fall to Spring Comparison



Planning for Next Year:

- Continued Professional Learning & Coaching for schools around:
 - Assessment Implementation
 - Navigating the Aperture Platform
 - Using data to guide SEL instruction at Tier 1
 - Integrating DESSA data into the MTSS system
 - Using the DESSA for progress monitoring
 - Intervention matching strategies
 - Utilizing the student platform grades 6-12 for self-paced learning, growth strategies, and self monitoring
- Roll-out of an integrated system for identifying classroom strategies and tiered interventions that align with student areas for growth.
- Middle School students will transition to Student Self-Report



A NEW WAY
FORWARD

 FAYETTE COUNTY PUBLIC SCHOOLS