



Kenton County School District | It's about ALL kids.

Issue Paper

DATE:

5/1/2023

AGENDA ITEM (ACTION ITEM):

Consider / Approve the Alteration of Site for the existing storm water retention ponds at Summit View Elementary.

APPLICABLE BOARD POLICY:

01.1 Legal Status of the Board; 05.11 Alterations of Buildings and Grounds

HISTORY/BACKGROUND:

The Banklick Watershed Council has been working with engineers to improve the flow and control of water as it runs off of adjacent hillsides into the Banklick Creek. Summit View Academy has two (2) water retention basins on its property that were identified as structures that could add benefit with controlling downstream flooding. The Banklick Watershed Council is having custom stainless steel restrictor plates fabricated to slow the flow of water as it drains off of the ponds. All fabrication and installation costs will be paid for by the Council and all work will be done in coordination with the Kenton County School District's Maintenance Department.

FISCAL/BUDGETARY IMPACT:

none

RECOMMENDATION:

Approve the Alteration of Site for the existing storm water retention ponds at Summit View Elementary.

CONTACT PERSON:

Rob Haney, Chief Operations Officer

Principal/Administrator



District Administrator



Superintendent

Use this form to submit your request to the Superintendent for items to be added to the Board Meeting Agenda

Principal – Complete, print, sign and send to your Director. Director – if approved, sign and put in the Superintendent's mailbox



Legend

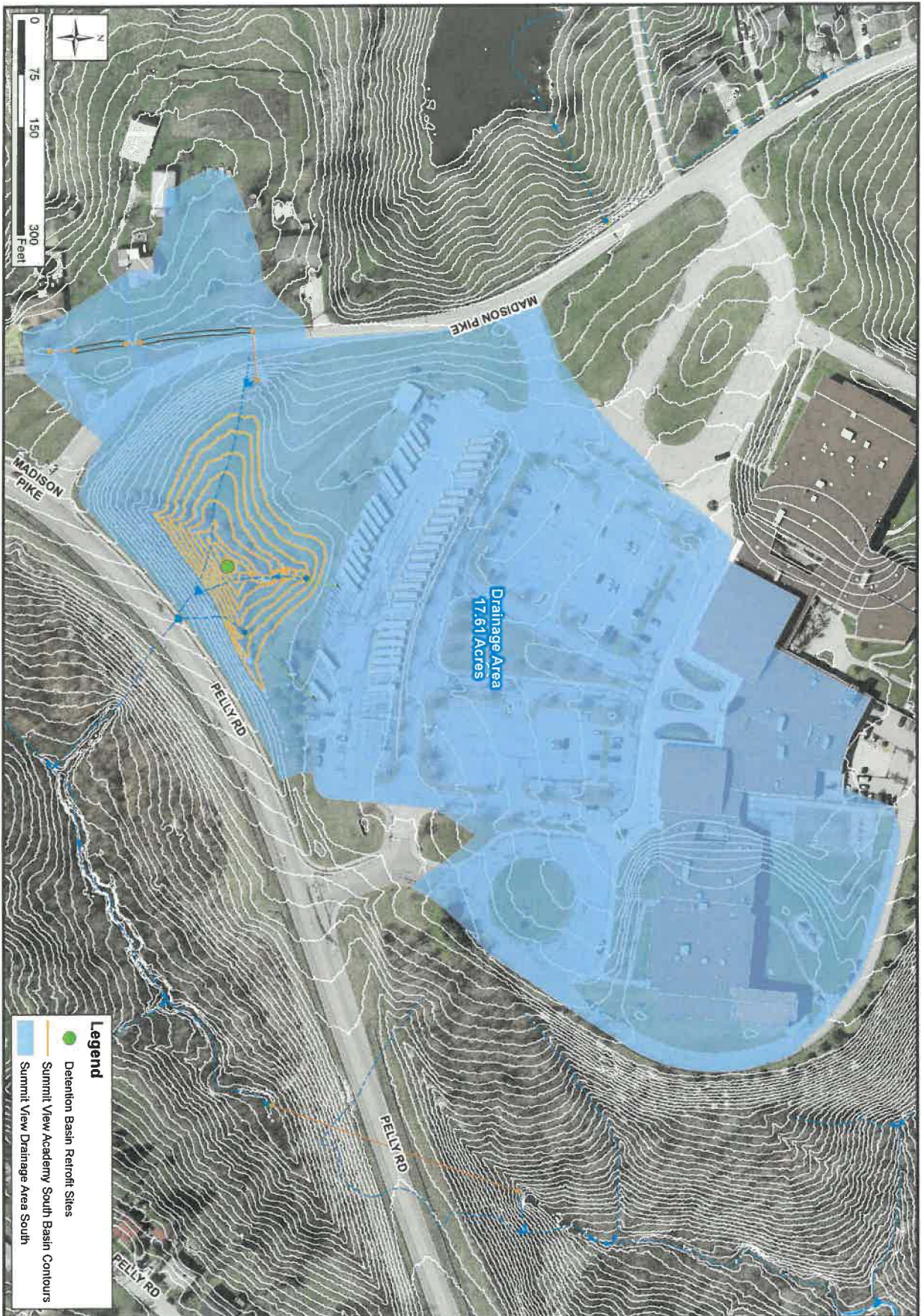
Summit View Academy South Basin Contours



1901.005

**SUMMIT VIEW ACADEMY SOUTH DETENTION BASIN
SITE MAP**

**DETENTION BASIN RETROFIT OPPORTUNITIES
BANKLICK WATERSHED COUNCIL
COVINGTON, KENTUCKY**



**SUMMIT VIEW ACADEMY SOUTH DETENTION BASIN
DRAINAGE AREA**

**DETENTION BASIN RETROFIT OPPORTUNITIES
BANKLICK WATERSHED COUNCIL
COVINGTON, KENTUCKY**

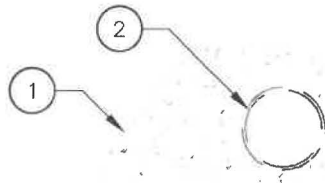
1901.005

STRAND
ASSOCIATES

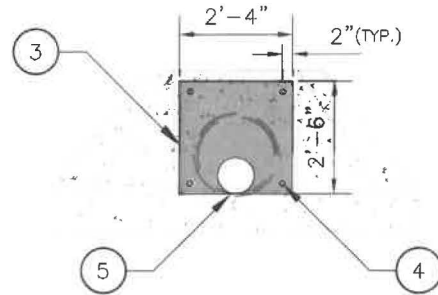
Summit View Academy South Detention Basin



File: S:\CIN\1900---1999\1901\005\Drawings\CAD\Basin Retrofit Details.dwg Time: Feb 28, 2023 - 1:06pm



EXISTING OUTLET STRUCTURE
NO SCALE



PROPOSED OUTLET STRUCTURE MODIFICATIONS
NO SCALE

KEY NOTES:

- 1 EXISTING LOW FLOW HEADWALL.
- 2 EXISTING 24-IN DIAMETER LOW FLOW PIPE.
- 3 PROVIDE STAINLESS STEEL RESTRICTOR PLATE, MINIMUM THICKNESS = 3/16-IN (QUANTITY = 1).
- 4 3/8-IN DIAMETER STAINLESS STEEL BOLT WITH 3/8-IN STAINLESS STEEL DROP-IN EXPANSION ANCHOR, EMBEDDED TO A MINIMUM OF 1 9/16-IN.
- 5 PROVIDE 8.5-IN DIAMETER CUTOUT IN RESTRICTOR PLATE. CUTOUT SHALL BE AT THE BOTTOM OF THE RESTRICTOR PLATE WITH NO LIP.

**SUMMIT VIEW ACADEMY SOUTH DETENTION BASIN
RETROFIT DETAILS**

**DETENTION BASIN RETROFIT OPPORTUNITIES
BANKLICK WATERSHED COUNCIL
COVINGTON, KENTUCKY**



FIGURE J

1901.005

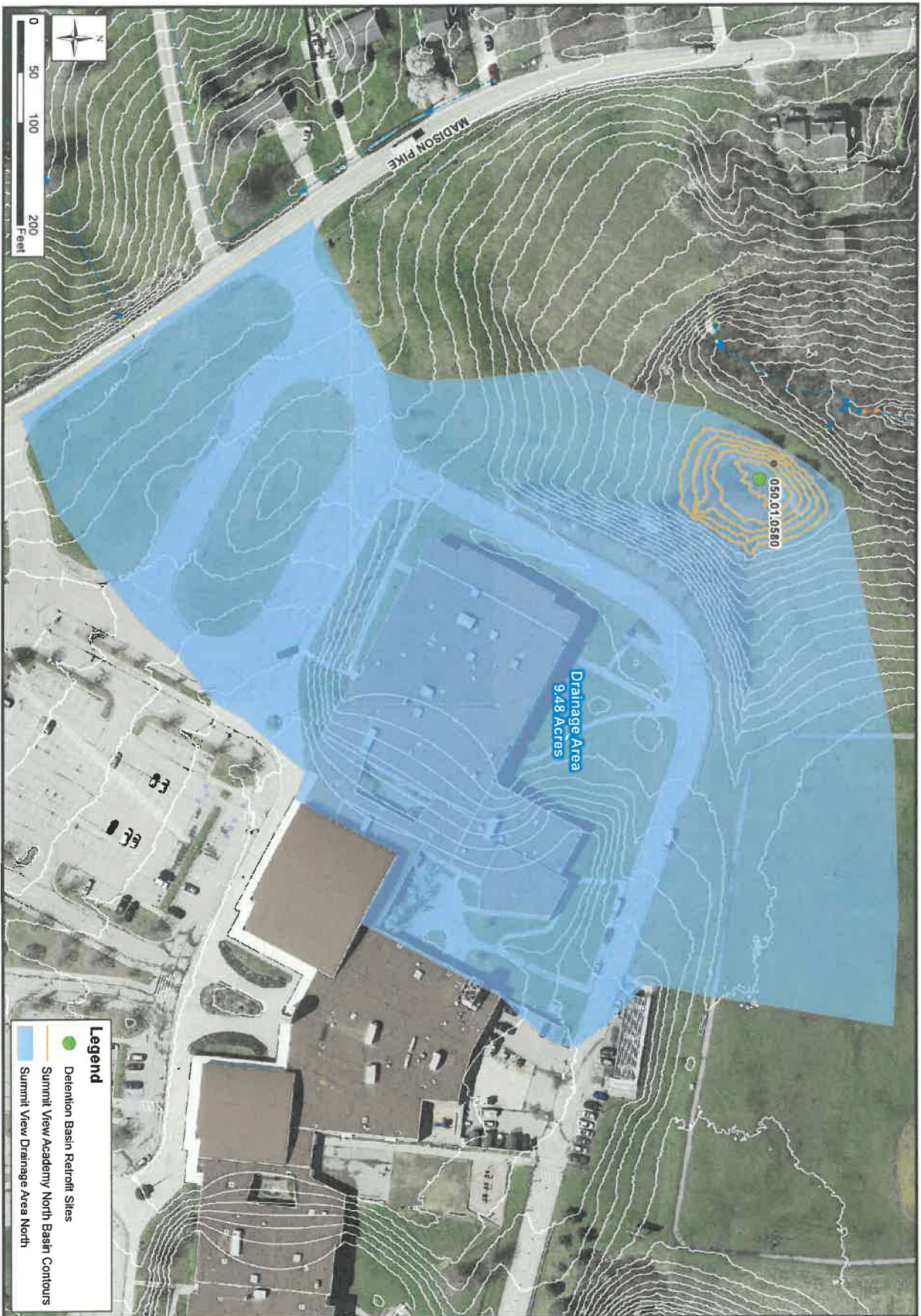
APPENDIX I
SUMMIT VIEW ACADEMY NORTH DETENTION BASIN



**SUMMIT VIEW ACADEMY NORTH DETENTION BASIN
SITE MAP**

**DETENTION BASIN RETROFIT OPPORTUNITIES
BANKLICK WATERSHED COUNCIL
COVINGTON, KENTUCKY**

Legend
Summit View Academy North Basin Contours



**SUMMIT VIEW ACADEMY NORTH DETENTION BASIN
DRAINAGE AREA**

**DETENTION BASIN RETROFIT OPPORTUNITIES
BANKLICK WATERSHED COUNCIL
COVINGTON, KENTUCKY**

1901.005

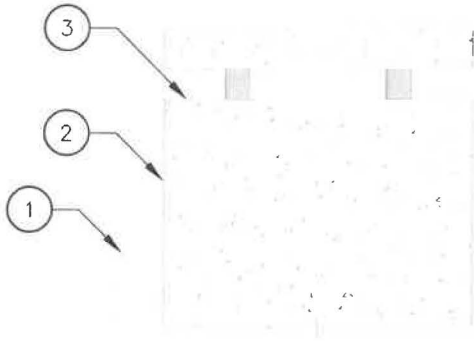
STRAND
ASSOCIATES

Summit View Academy North Detention Basin

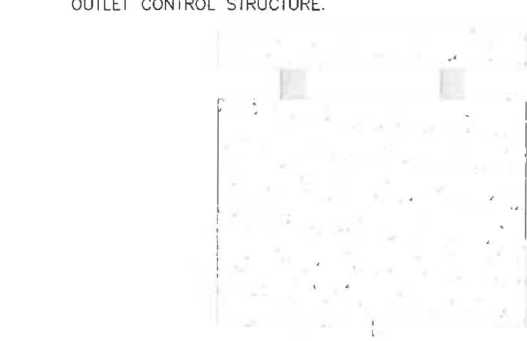


File: S:\CIN\1900--1999\1901\005\Drawings\CAD\Basin Retrofit Details.dwg Time: Feb 27, 2023 - 11:48am

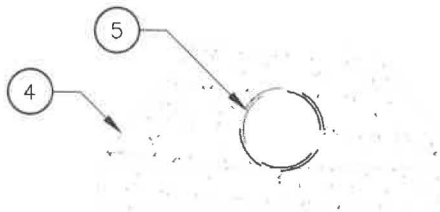
NOTE: NO MODIFICATIONS ARE PROPOSED ON THE EXISTING UPPER OUTLET CONTROL STRUCTURE.



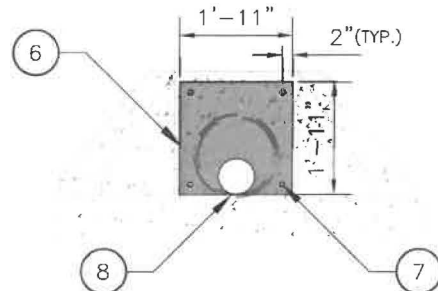
1 EXISTING UPPER OUTLET STRUCTURE
NO SCALE



3 PROPOSED UPPER STRUCTURE MODIFICATIONS
NO SCALE



2 EXISTING LOWER OUTLET STRUCTURE
NO SCALE



4 PROPOSED LOWER STRUCTURE MODIFICATIONS
NO SCALE

KEY NOTES:

- 1 EXISTING GROUND.
- 2 EXISTING OUTLET CONTROL STRUCTURE.
- 3 EXISTING 48-IN DIAMETER OPENING.
- 4 EXISTING LOW FLOW HEADWALL.
- 5 EXISTING 15-IN DIAMETER LOW FLOW PIPE.
- 6 PROVIDE STAINLESS STEEL RESTRICTOR PLATE, MINIMUM THICKNESS = 3/16-IN (QUANTITY = 1).
- 7 3/8-IN DIAMETER STAINLESS STEEL BOLT WITH 3/8-IN STAINLESS STEEL DROP-IN EXPANSION ANCHOR, EMBEDDED TO A MINIMUM OF 1 9/16-IN.
- 8 PROVIDE 7-IN DIAMETER CUTOUT IN RESTRICTOR PLATE. CUTOUT SHALL BE AT THE BOTTOM OF THE RESTRICTOR PLATE WITH NO LIP.

**SUMMIT VIEW ACADEMY NORTH DETENTION BASIN (050.01.0580)
RETROFIT DETAILS**

**DETENTION BASIN RETROFIT OPPORTUNITIES
BANKLICK WATERSHED COUNCIL
COVINGTON, KENTUCKY**



FIGURE I

1901.005