



To: Dr. Jesse Bacon, Superintendent 

From: Adrienne Usher, Assistant Superintendent  
Dr. Brandy Howard, Chief Academic Officer  
Patrick Durham, Director of Elementary Education 

Date: April 19, 2023

Re: Curriculum Associates-IReady Agreement

**Rationale**

Senate Bill 9 (2022) Read to Succeed Act Implementation Timeline Senate Bill (SB) 9 (2022) contains an emergency clause, which allows the bill to become law effective immediately upon its signing by the governor.

- ☐ All teachers of students in K-3 shall be trained on any reading diagnostic assessment AND universal screener selected by the superintendent prior to administration of the assessment in the 2023-2024 school year.
- ☐ Beginning with the 2023-2024 school year, a reliable and valid universal screener shall be:
  - ☐ Given in the first 45 days of the school year for all kindergarten students; and
  - ☐ Given in the first 30 days of the school year for grades 1-3.
  - ☐ Based on the data from the above, a reading improvement plan shall be developed and implemented by a reading improvement team for any student in K-3 identified as needing accelerated interventions to progress toward proficient performance in reading.

**IReady Agreement**

The agreement will provide the universal screener for reading that is aligned to SB 9 for students in K-3. In addition, we will be purchasing the math component as due to the impact COVID has had on our students in their mathematical knowledge and growth. This agreement provides a universal screener for reading and math along with individualized instruction connected to assessment results. In an effort to streamline assessments and platforms, we will utilize IReady in K-5 across all elementary schools for reading and math. Due to this, elementary schools will no longer use Mastery View Predictive Assessment (formerly CASE) and this will be our primary measure for measuring growth on standards mastery across all 13 elementary schools in reading and math. In addition, there is required professional development per the company that is included in this agreement. The total cost of the assessment, individualized instruction platform, and required professional learning will be \$290,817 and will be funded through ESSER for the 2023-2024 school year.

**OUR MISSION IS TO INSPIRE AND EQUIP OUR STUDENTS TO SUCCEED IN LIFE**

**BULLITT COUNTY PUBLIC SCHOOLS IS AN EQUAL EDUCATION AND EMPLOYMENT INSTITUTION**

# Curriculum Associates®

## Prepared For:

Patrick Durham  
Bullitt Co PSD  
1040 Highway 44 E,  
Shepherdsville, KY 40165

4/18/2023

Dear Patrick Durham,

Thank you for requesting a price quote from Curriculum Associates. The chart below provides a summary of the products and i-Ready Partner Services included. If you have any questions or would like any changes, please contact us.

Implementation Starting: 2023-2024

Quote ID: 282559.11

Valid through: 12/31/2023

Product	List Price	Net Price
i-Ready	\$248,902.50	\$236,817.00
Professional Development	\$54,000.00	\$54,000.00
i-Ready Partners Services	\$19,500.00	\$0.00
<i>i-Ready Partners Services Includes:</i> <ul style="list-style-type: none"><li><i><u>Initial Implementation Services:</u> Provisioning, Initial Rostering, Hosting, Technology Assessment</i></li><li><i><u>Account Management:</u> Account Manager You Know On A First Name Basis, Implementation Guidance, Realtime Achievement Data After Every Assessment, Ongoing Data Management</i></li><li><i><u>Staff Development Consultation and Resources:</u> Consultative services to help you plan and make the most of Professional Development sessions; Access to Online Educator Learning (OEL) Digital Courses, and i-Ready Central Self-Service Resources</i></li><li><i><u>Technical Support:</u> Proactive Network Monitoring &amp; Issue Notification, Annual Health Check, Technical Support</i></li></ul>		
List Total:		\$322,402.50
Savings:		\$31,585.50
Shipping/Tax/Other:		\$0.00
Total:		\$290,817.00

Thank you again for your interest in Curriculum Associates.

## Sincerely

Arthur Larson  
314-698-6438  
arthurlarson@cainc.com

**Please submit this quote with your purchase order**



# Curriculum Associates®

Quote ID: 282559.11 Date: 4/18/2023 Valid through: 12/31/2023

**Prepared For:**

Patrick Durham  
Bullitt Co PSD  
1040 Highway 44 E,  
ShepherdsVlle, KY 40165  
patrick.durham@bullitt.kyschools.us  
(502) 869-8000

**Your Representative:**

Arthur Larson  
314-698-6438  
arthurlarson@cainc.com

**Brooks ES 1430 Brooks Hill Rd, Brooks, KY 40109**

Total Building Enrollment: 420, Grade Range: PK - 5

Product Name	Grade	Item #	Qty	List Price	Net Price	Total
Online Educator Learning Platform Site License Including Educator Prep Series (Complements Onsite and Virtual Professional Development)	Multiple	28024.0	1	\$0.00	\$0.00	\$0.00
Professional Development i-Ready Assessment and Personalized Instruction Tailored Support Session	Multiple	16954.0	1	\$2,000.00	\$2,000.00	\$2,000.00
i-Ready Assessment and Personalized Instruction Math and Reading Site License 351-500 Students 1 Year	Multiple	15003.0	1	\$19,750.00	\$18,762.50	\$18,762.50
i-Ready Partners Implementation Support - Provisioning + Tech Support + Hosting + Data Management + Implementation Planning + Data Reviews + and Check ins 1 Year	Multiple	27939.0	1	\$1,500.00	\$0.00	\$0.00
Subtotal:						\$20,762.50
Shipping:						\$0.00
Tax:						\$0.00
School Subtotal:						\$20,762.50

**Cedar Grove ES 1900 Cedar Grove Rd, ShepherdsVlle, KY 40165**

Total Building Enrollment: 444, Grade Range: PK - 5

Product Name	Grade	Item #	Qty	List Price	Net Price	Total
Online Educator Learning Platform Site License Including Educator Prep Series (Complements Onsite and Virtual Professional Development)	Multiple	28024.0	1	\$0.00	\$0.00	\$0.00
Professional Development i-Ready Assessment and Personalized Instruction Tailored Support Session	Multiple	16954.0	1	\$2,000.00	\$2,000.00	\$2,000.00
i-Ready Assessment and Personalized Instruction Math and Reading Site License 351-500 Students 1 Year	Multiple	15003.0	1	\$19,750.00	\$18,762.50	\$18,762.50
i-Ready Partners Implementation Support - Provisioning + Tech Support + Hosting + Data Management + Implementation Planning + Data Reviews + and Check ins 1 Year	Multiple	27939.0	1	\$1,500.00	\$0.00	\$0.00
Subtotal:						\$20,762.50
Shipping:						\$0.00
Tax:						\$0.00
School Subtotal:						\$20,762.50

**Crossroads ES 156 Erin Cir, Mt Washington, KY 40047**

Total Building Enrollment: 462, Grade Range: PK - 5

Product Name	Grade	Item #	Qty	List Price	Net Price	Total
Online Educator Learning Platform Site License Including Educator Prep Series (Complements Onsite and Virtual Professional Development)	Multiple	28024.0	1	\$0.00	\$0.00	\$0.00
Professional Development i-Ready Assessment and Personalized Instruction Tailored Support Session	Multiple	16954.0	1	\$2,000.00	\$2,000.00	\$2,000.00
i-Ready Assessment and Personalized Instruction Math and Reading Site License 351-500 Students 1 Year	Multiple	15003.0	1	\$19,750.00	\$18,762.50	\$18,762.50
i-Ready Partners Implementation Support - Provisioning + Tech Support + Hosting + Data Management + Implementation Planning + Data Reviews + and Check ins 1 Year	Multiple	27939.0	1	\$1,500.00	\$0.00	\$0.00
					Subtotal:	\$20,762.50
					Shipping:	\$0.00
					Tax:	\$0.00
					School Subtotal:	\$20,762.50

**Freedom ES 4682 N Preston Hwy, Shepherdsville, KY 40165**

Total Building Enrollment: 426, Grade Range: PK - 5

Product Name	Grade	Item #	Qty	List Price	Net Price	Total
Online Educator Learning Platform Site License Including Educator Prep Series (Complements Onsite and Virtual Professional Development)	Multiple	28024.0	1	\$0.00	\$0.00	\$0.00
Professional Development i-Ready Assessment and Personalized Instruction Tailored Support Session	Multiple	16954.0	1	\$2,000.00	\$2,000.00	\$2,000.00
i-Ready Assessment and Personalized Instruction Math and Reading Site License 351-500 Students 1 Year	Multiple	15003.0	1	\$19,750.00	\$18,762.50	\$18,762.50
i-Ready Partners Implementation Support - Provisioning + Tech Support + Hosting + Data Management + Implementation Planning + Data Reviews + and Check ins 1 Year	Multiple	27939.0	1	\$1,500.00	\$0.00	\$0.00
					Subtotal:	\$20,762.50
					Shipping:	\$0.00
					Tax:	\$0.00
					School Subtotal:	\$20,762.50



**Lebanon Junction ES 10920 S Preston Hwy, Lebanon Jct, KY 40150**

Total Building Enrollment: 372, Grade Range: PK - 5

Product Name	Grade	Item #	Qty	List Price	Net Price	Total
Online Educator Learning Platform Site License Including Educator Prep Series (Complements Onsite and Virtual Professional Development)	Multiple	28024.0	1	\$0.00	\$0.00	\$0.00
Professional Development i-Ready Assessment and Personalized Instruction Tailored Support Session	Multiple	16954.0	1	\$2,000.00	\$2,000.00	\$2,000.00
i-Ready Assessment and Personalized Instruction Math and Reading Site License 351-500 Students 1 Year	Multiple	15003.0	1	\$19,750.00	\$18,762.50	\$18,762.50
i-Ready Partners Implementation Support - Provisioning + Tech Support + Hosting + Data Management + Implementation Planning + Data Reviews + and Check ins 1 Year	Multiple	27939.0	1	\$1,500.00	\$0.00	\$0.00
					Subtotal:	\$20,762.50
					Shipping:	\$0.00
					Tax:	\$0.00
					School Subtotal:	\$20,762.50

**Maryville ES 4504 Summers Dr, Louisville, KY 40229**

Total Building Enrollment: 312, Grade Range: PK - 5

Product Name	Grade	Item #	Qty	List Price	Net Price	Total
Online Educator Learning Platform Site License Including Educator Prep Series (Complements Onsite and Virtual Professional Development)	Multiple	28024.0	1	\$0.00	\$0.00	\$0.00
Professional Development i-Ready Assessment and Personalized Instruction Tailored Support Session	Multiple	16954.0	1	\$2,000.00	\$2,000.00	\$2,000.00
i-Ready Assessment and Personalized Instruction Math and Reading Site License 201-350 Students 1 Year	Multiple	15002.0	1	\$13,900.00	\$13,205.00	\$13,205.00
i-Ready Partners Implementation Support - Provisioning + Tech Support + Hosting + Data Management + Implementation Planning + Data Reviews + and Check ins 1 Year	Multiple	27939.0	1	\$1,500.00	\$0.00	\$0.00
					Subtotal:	\$15,205.00
					Shipping:	\$0.00
					Tax:	\$0.00
					School Subtotal:	\$15,205.00

**Mt Washington ES 9234 Highway 44 E, Mt Washington, KY 40047**

Total Building Enrollment: 564, Grade Range: PK - 5

Product Name	Grade	Item #	Qty	List Price	Net Price	Total
Online Educator Learning Platform Site License Including Educator Prep Series (Complements Onsite and Virtual Professional Development)	Multiple	28024.0	1	\$0.00	\$0.00	\$0.00
Professional Development i-Ready Assessment and Personalized Instruction Tailored Support Session	Multiple	16954.0	1	\$2,000.00	\$2,000.00	\$2,000.00
i-Ready Assessment and Personalized Instruction Math and Reading Site License 501-800 Students 1 Year	Multiple	15004.0	1	\$23,270.00	\$22,106.50	\$22,106.50
i-Ready Partners Implementation Support - Provisioning + Tech Support + Hosting + Data Management + Implementation Planning + Data Reviews + and Check ins 1 Year	Multiple	27939.0	1	\$1,500.00	\$0.00	\$0.00
					Subtotal:	\$24,106.50
					Shipping:	\$0.00
					Tax:	\$0.00
					School Subtotal:	\$24,106.50

**Nichols ES 10665 Highway 44 W, West Point, KY 40177**

Total Building Enrollment: 136, Grade Range: K - 5

Product Name	Grade	Item #	Qty	List Price	Net Price	Total
Online Educator Learning Platform Site License Including Educator Prep Series (Complements Onsite and Virtual Professional Development)	Multiple	28024.0	1	\$0.00	\$0.00	\$0.00
Professional Development i-Ready Assessment and Personalized Instruction Tailored Support Session	Multiple	16954.0	1	\$2,000.00	\$2,000.00	\$2,000.00
i-Ready Assessment and Personalized Instruction Math Per Student License 1 Year	Multiple	13087.0	105	\$34.25	\$34.25	\$3,596.25
i-Ready Partners Implementation Support - Provisioning + Tech Support + Hosting + Data Management + Implementation Planning + Data Reviews + and Check ins 1 Year	Multiple	27939.0	1	\$1,500.00	\$0.00	\$0.00
i-Ready Assessment and Personalized Instruction Reading Per Student License 1 Year	Multiple	13089.0	105	\$34.25	\$34.25	\$3,596.25
					Subtotal:	\$9,192.50
					Shipping:	\$0.00
					Tax:	\$0.00
					School Subtotal:	\$9,192.50



**Old Mill ES 11540 Highway 44 E, Mt Washington, KY 40047**

Total Building Enrollment: 456, Grade Range: PK - 5

Product Name	Grade	Item #	Qty	List Price	Net Price	Total
Online Educator Learning Platform Site License Including Educator Prep Series (Complements Onsite and Virtual Professional Development)	Multiple	28024.0	1	\$0.00	\$0.00	\$0.00
Professional Development i-Ready Assessment and Personalized Instruction Tailored Support Session	Multiple	16954.0	1	\$2,000.00	\$2,000.00	\$2,000.00
i-Ready Assessment and Personalized Instruction Math and Reading Site License 351-500 Students 1 Year	Multiple	15003.0	1	\$19,750.00	\$18,762.50	\$18,762.50
i-Ready Partners Implementation Support - Provisioning + Tech Support + Hosting + Data Management + Implementation Planning + Data Reviews + and Check ins 1 Year	Multiple	27939.0	1	\$1,500.00	\$0.00	\$0.00
					Subtotal:	\$20,762.50
					Shipping:	\$0.00
					Tax:	\$0.00
					School Subtotal:	\$20,762.50

**Overdale ES 651 Overdale Dr, Louisville, KY 40229**

Total Building Enrollment: 354, Grade Range: PK - 5

Product Name	Grade	Item #	Qty	List Price	Net Price	Total
Online Educator Learning Platform Site License Including Educator Prep Series (Complements Onsite and Virtual Professional Development)	Multiple	28024.0	1	\$0.00	\$0.00	\$0.00
Professional Development i-Ready Assessment and Personalized Instruction Tailored Support Session	Multiple	16954.0	1	\$2,000.00	\$2,000.00	\$2,000.00
i-Ready Assessment and Personalized Instruction Math and Reading Site License 351-500 Students 1 Year	Multiple	15003.0	1	\$19,750.00	\$18,762.50	\$18,762.50
i-Ready Partners Implementation Support - Provisioning + Tech Support + Hosting + Data Management + Implementation Planning + Data Reviews + and Check ins 1 Year	Multiple	27939.0	1	\$1,500.00	\$0.00	\$0.00
					Subtotal:	\$20,762.50
					Shipping:	\$0.00
					Tax:	\$0.00
					School Subtotal:	\$20,762.50

**Pleasant Grove ES 6415 Highway 44 E, Mt Washington, KY 40047**

Total Building Enrollment: 546, Grade Range: PK - 5

Product Name	Grade	Item #	Qty	List Price	Net Price	Total
Online Educator Learning Platform Site License Including Educator Prep Series (Complements Onsite and Virtual Professional Development)	Multiple	28024.0	1	\$0.00	\$0.00	\$0.00
Professional Development i-Ready Assessment and Personalized Instruction Tailored Support Session	Multiple	16954.0	1	\$2,000.00	\$2,000.00	\$2,000.00
i-Ready Assessment and Personalized Instruction Math and Reading Site License 501-800 Students 1 Year	Multiple	15004.0	1	\$23,270.00	\$22,106.50	\$22,106.50
i-Ready Partners Implementation Support - Provisioning + Tech Support + Hosting + Data Management + Implementation Planning + Data Reviews + and Check ins 1 Year	Multiple	27939.0	1	\$1,500.00	\$0.00	\$0.00
					Subtotal:	\$24,106.50
					Shipping:	\$0.00
					Tax:	\$0.00
					School Subtotal:	\$24,106.50

**Roby ES 1148 Highway 44 E, Shepherdsville, KY 40165**

Total Building Enrollment: 426, Grade Range: PK - 5

Product Name	Grade	Item #	Qty	List Price	Net Price	Total
Online Educator Learning Platform Site License Including Educator Prep Series (Complements Onsite and Virtual Professional Development)	Multiple	28024.0	1	\$0.00	\$0.00	\$0.00
Professional Development i-Ready Assessment and Personalized Instruction Tailored Support Session	Multiple	16954.0	1	\$2,000.00	\$2,000.00	\$2,000.00
i-Ready Assessment and Personalized Instruction Math and Reading Site License 351-500 Students 1 Year	Multiple	15003.0	1	\$19,750.00	\$18,762.50	\$18,762.50
i-Ready Partners Implementation Support - Provisioning + Tech Support + Hosting + Data Management + Implementation Planning + Data Reviews + and Check ins 1 Year	Multiple	27939.0	1	\$1,500.00	\$0.00	\$0.00
					Subtotal:	\$20,762.50
					Shipping:	\$0.00
					Tax:	\$0.00
					School Subtotal:	\$20,762.50



**Shepherdsville ES 527 W Blue Lick Rd, Shepherdsville, KY 40165**

Total Building Enrollment: 511, Grade Range: K - 5

Product Name	Grade	Item #	Qty	List Price	Net Price	Total
Online Educator Learning Platform Site License Including Educator Prep Series (Complements Onsite and Virtual Professional Development)	Multiple	28024.0	1	\$0.00	\$0.00	\$0.00
Professional Development i-Ready Assessment and Personalized Instruction Tailored Support Session	Multiple	16954.0	1	\$2,000.00	\$2,000.00	\$2,000.00
i-Ready Assessment and Personalized Instruction Math and Reading Site License 501-800 Students 1 Year	Multiple	15004.0	1	\$23,270.00	\$22,106.50	\$22,106.50
i-Ready Partners Implementation Support - Provisioning + Tech Support + Hosting + Data Management + Implementation Planning + Data Reviews + and Check ins 1 Year	Multiple	27939.0	1	\$1,500.00	\$0.00	\$0.00
					Subtotal:	\$24,106.50
					Shipping:	\$0.00
					Tax:	\$0.00
					School Subtotal:	\$24,106.50

**Bullitt Co PSD 1040 Highway 44 E, Shepherdsville, KY 40165**

Total Building Enrollment: 8493, Grade Range: PK - 12

Product Name	Grade	Item #	Qty	List Price	Net Price	Total
Professional Development i-Ready Assessment Add on Leadership Session	Multiple	19990.0	1	\$0.00	\$0.00	\$0.00
Professional Development i-Ready Assessment New User Package - Getting Good Data and Using Data to Plan Instruction	Multiple	19985.0	3	\$4,000.00	\$4,000.00	\$12,000.00
Professional Development i-Ready Assessment Practicing User Package - Delivering Differentiated Instruction and Helping all Learners Succeed	Multiple	19987.0	3	\$4,000.00	\$4,000.00	\$12,000.00
Professional Development i-Ready Assessment and Personalized Instruction Tailored Support Session	Multiple	16954.0	2	\$2,000.00	\$2,000.00	\$4,000.00
					Subtotal:	\$28,000.00
					Shipping:	\$0.00
					Tax:	\$0.00
					School Subtotal:	\$28,000.00

**Total**

List Total:	\$322,402.50
Savings:	\$31,585.50
Merchandise Total:	\$290,817.00
Voucher/Credit:	\$0.00
Estimated Tax:	\$0.00
Estimated Shipping:	\$0.00
<b>Total:</b>	<b>\$290,817.00</b>

**Special Notes**

All i-Ready purchases require professional development.  
5% discount applied to i-Ready based on scope of quote.

F.O.B.: N. Billerica, MA 01862

Shipping: Shipping based on MDSE total

Terms: Net 30 days, pending credit approval

**Please submit this quote with your purchase order**

Y14



# Curriculum Associates®

## Information on Professional Development Sessions and COVID-19

Protecting the health and safety of the educators we serve and their students, as well as the health and safety of our employees, is of paramount importance to Curriculum Associates. While it is our preference to deliver PD sessions in person, circumstances related to COVID-19 may require us to provide sessions virtually instead. Curriculum Associates' policy is to only provide PD sessions in person where one of our employees can reach the session site by car and where adequate safety measures are in place to protect the health of our session leaders and participants. Curriculum Associates reserves the right to switch any session from in-person to virtual if we cannot reach a session site by car, if adequate safety measures cannot be put in place, or if Curriculum Associates determines that it would otherwise put its employees at risk to provide an in-person session.

If your school or district will not permit visitors at the time of a scheduled session, Curriculum Associates would be happy to provide an equivalent live, virtual session via videoconference. Similarly, Curriculum Associates will comply with your school or district's health and safety requirements regarding on-site visitors if we are given adequate advance notice. Our PD Operations team will work with school or district personnel to hold sessions in a manner that protects the safety of educators and your school community as well as Curriculum Associates employees.

We are pleased to be able to serve you in these challenging times and look forward to providing productive learning sessions to your staff. Any questions regarding scheduling in-person or virtual training sessions should be directed to [pdoperations@cainc.com](mailto:pdoperations@cainc.com).



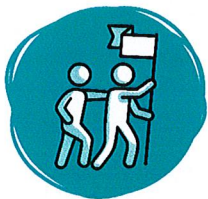
## Unparalleled Service and Educator Support

The *i-Ready Partners* team was born from our core value: the quality of our services is as important as the quality of our products. Know that when you implement our programs, your local *i-Ready Partners* will be there to support your team every step of the way.

### Service Components

Our *i-Ready Partners* team is tasked with helping you implement our programs to meet ambitious district goals. *i-Ready Partners* support includes:

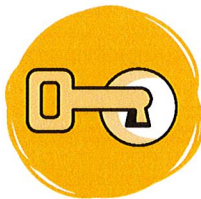
- **An Account Manager You Know on a First-Name Basis:** Dedicated account managers are your point of connection to a powerful network of *i-Ready* experts focused on making your implementation successful.
- **Consultative Professional Development Planning:** Tailored professional development plans ensure that PD is tied to your implementation goals and that educators are equipped to optimize the use of our programs from day one.
- **Real-Time Achievement Data after Every Assessment:** Detailed student achievement analytics to empower data-driven practices in classrooms.
- **Educational Consultants to Help You Know What's Coming Next:** Educational consultants to keep you up to speed on our latest research, development, and best practices.
- **Technical Support and Health Checks:** Proactive support that anticipates and heads off issues before they start—and is there for you should they arise.



**Account  
Management**



**Professional  
Development**



**Educational  
Consultants**



**Achievement  
Analytics**



**Technical  
Support**

### Your *i-Ready* *Partners* Team

Dedicated to helping you  
implement *i-Ready* programs  
and achieve your district goals





# Curriculum Associates®

## Placing an Order

Email: [Orders@cainc.com](mailto:Orders@cainc.com)  
Fax: 1-800-366-1158  
Mail:  
ATTN: CUSTOMER SERVICE DEPT.  
Curriculum Associates LLC  
153 Rangeway Rd  
North Billerica, MA 01862-2013

Please visit [CurriculumAssociates.com](http://CurriculumAssociates.com) for more information about placing orders or contact CA's customer service department (1-800-225-0248) and reference quote number for questions. Please attach quote to all signed purchase orders. If tax exempt, please submit a valid exemption certificate with PO and quote in order to avoid processing delays. Exemption certificates can also be submitted to [exempt@cainc.com](mailto:exempt@cainc.com).

## Shipping Policy

Unless otherwise noted, shipping costs are calculated as follows:

Order Amount	Freight Amount
\$74.99 or less	Max charge of \$12.75
\$75.00 to \$999.99	12% of order
\$1,000 to \$4,999.99	10% of order

Order Amount	Freight Amount
\$5,000.00 to \$99,999.99	9% of order
\$100,000 and more	7% of order

Please contact your local CA representative or customer service (1-800-225-0248) for expedited shipping rates. The weight limit for an expedited order is 500lbs.

The enhanced shipping and handling services listed below are available upon request subject to the availability of our carrier partners. Please notify us of these delivery requests prior to submitting your PO so that we can include the service on your quote appropriately:

- Interior Location Delivery \$50/shipment location
- White Glove Delivery Service \$350/shipment location

If our carrier partners are unable to deliver to the location instructed on the PO or you need to change the time or location of delivery, one or more of the following fees may be applicable:

- Delivery Address Change \$100/shipment location
- Freight Storage \$150/day/shipment location
- Freight Carrier Redelivery \$100/shipment location

Unless otherwise expressly indicated, the shipping terms for all deliveries is FOB CA's Shipping Point (whether to a CA or third party facility). Risk of loss and title is passed to purchaser upon transfer of the goods to carrier, standard shipping charges (listed above) are added to the invoice or included in the unit price unless otherwise specified.

Supply chain challenges outside of Curriculum Associates' control may impact inventory availability for print product. We recommend submission of purchase orders as soon as possible to help ensure timely delivery.

## Payment Terms

Payment terms are as follows:

- With credit approval: Net 30 days
- Without credit approval: payment in full at time of order
- Accounts must be current before subsequent shipments are made

To ensure payment processing is timely and environmentally conscious, CA encourages ACH payments. If you would like to pay via ACH, please request remittance information by emailing [AR@cainc.com](mailto:AR@cainc.com).

Please send any payment notifications to [payments@cainc.com](mailto:payments@cainc.com). Credit card payments are only accepted for purchases under \$50,000.

## Invoice Receipt Preference

CA is pleased to offer electronic invoice delivery. Electronic invoice delivery allows CA to deliver your invoice in a timely and environmentally friendly manner. To request electronic invoice delivery please contact the CA Accounts Receivable team at [invoices@cainc.com](mailto:invoices@cainc.com) or by fax (1-800-366-1158). Please reference your quote number, provide a valid email address where the invoice should be directed, and indicate you would like to opt into electronic invoice delivery.

## Terms of Service

Customer's use of i-Ready® shall be subject to the i-Ready Terms and Conditions of Use, which can be found at [i-ready.com/support](http://i-ready.com/support). Customer's professional-development sessions will expire two years following the date of your purchase order and are subject to the Professional Development Terms of Service, which can be found at [i-ready.com/support](http://i-ready.com/support).

## Return Policy

Except for materials sold on a non-refundable basis, purchaser may return, at purchaser risk and expense, purchased materials with pre-approval from CA's Customer Service department within 12 months of purchase. Please examine your order upon receipt. Before returning material, call CA's Customer Service department (1-800-225-0248 option 4) for return authorization and documentation. When returning material, please include your return authorization number and the return form that will be provided to you by CA's Return department. i-Ready®, Toolbox®, and BRIGANCE® Online Management Systems may be returned for a pro-rated refund for the remaining time left on the contract. We do not accept returns on unused i-Ready or Toolbox licenses®, materials that have been used and/or are not in "saleable condition," and individual components of kits or sets including but not limited to BRIGANCE® Kits, Ready® student and teacher sets, Ready Classroom® student and teacher sets, and Magnetic Reading classroom kits.