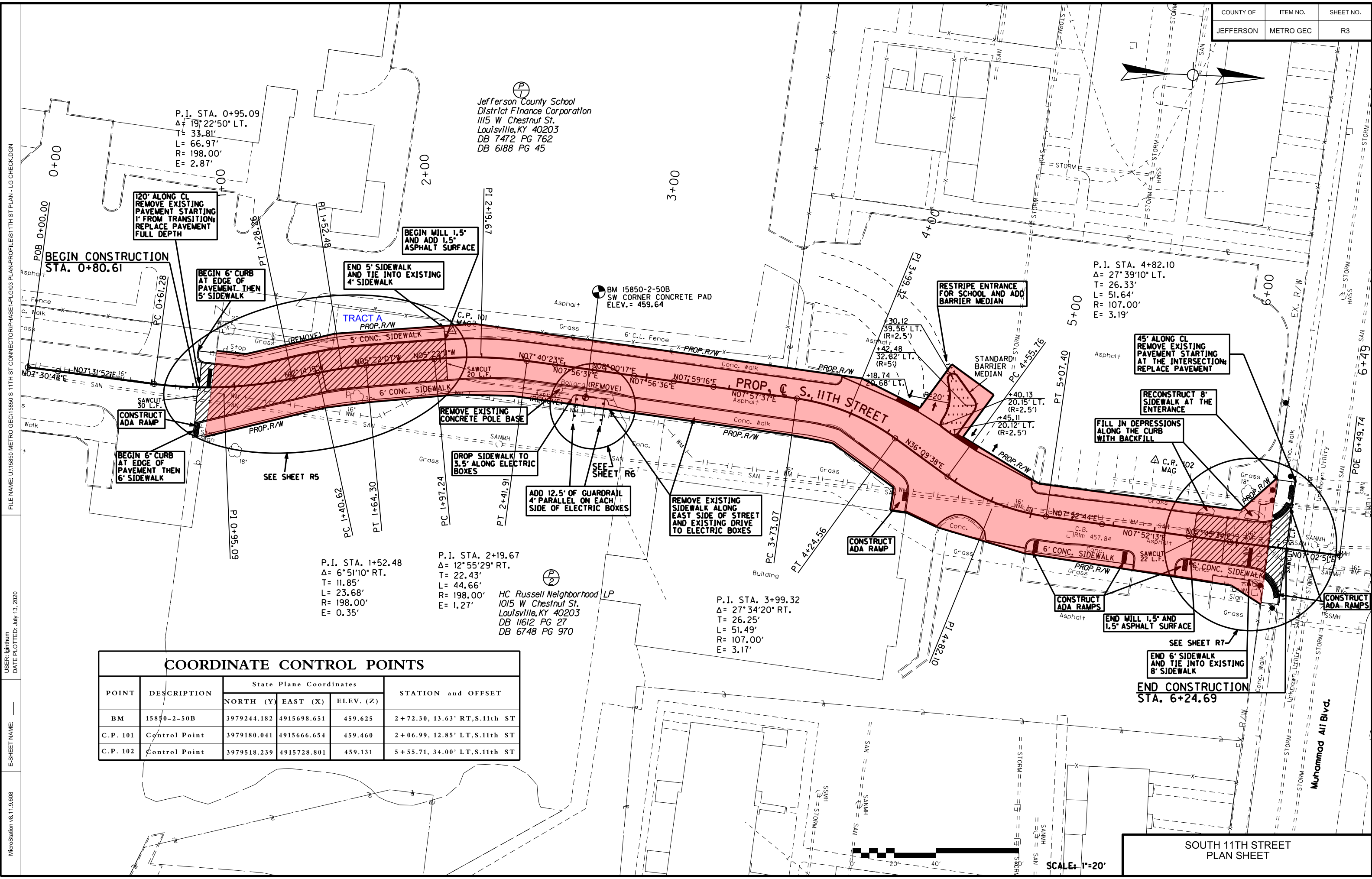


FILE NAME: U:\15850 METRO GEC\15850 S 11TH ST CONNECTOR\PHASE1-PLG03 PLAN\PROFILE\11TH ST PLAN - LG CHECK.DGN  
 USER: jharrum  
 DATE PLOTTED: July 13, 2020  
 E-SHEET NAME:  
 MicroStation v8.11.9.608



P.I. STA. 0+95.09  
 $\Delta = 197'22'50''$  LT.  
 $T = 33.81'$   
 $L = 66.97'$   
 $R = 198.00'$   
 $E = 2.87'$

Jefferson County School  
 District Finance Corporation  
 1115 W Chestnut St.  
 Louisville, KY 40203  
 DB 7472 PG 762  
 DB 6188 PG 45

P.I. STA. 4+82.10  
 $\Delta = 27'39'10''$  LT.  
 $T = 26.33'$   
 $L = 51.64'$   
 $R = 107.00'$   
 $E = 3.19'$

P.I. STA. 1+52.48  
 $\Delta = 6'51'10''$  RT.  
 $T = 11.85'$   
 $L = 23.68'$   
 $R = 198.00'$   
 $E = 0.35'$

P.I. STA. 2+19.67  
 $\Delta = 12'55'29''$  RT.  
 $T = 22.43'$   
 $L = 44.66'$   
 $R = 198.00'$   
 $E = 1.27'$

HC Russell Neighborhood LP  
 1015 W Chestnut St.  
 Louisville, KY 40203  
 DB 11612 PG 27  
 DB 6748 PG 970

P.I. STA. 3+99.32  
 $\Delta = 27'34'20''$  RT.  
 $T = 26.25'$   
 $L = 51.49'$   
 $R = 107.00'$   
 $E = 3.17'$

### COORDINATE CONTROL POINTS

POINT	DESCRIPTION	State Plane Coordinates			STATION and OFFSET
		NORTH (Y)	EAST (X)	ELEV. (Z)	
BM	15850-2-50B	3979244.182	4915698.651	459.625	2+72.30, 13.63' RT, S.11th ST
C.P. 101	Control Point	3979180.041	4915666.654	459.460	2+06.99, 12.85' LT, S.11th ST
C.P. 102	Control Point	3979518.239	4915728.801	459.131	5+55.71, 34.00' LT, S.11th ST

SOUTH 11TH STREET  
PLAN SHEET

SCALE: 1"=20'

