

History Log

Russellville Independent (523) Public District - FY 2024 - Declaration of Participation Report - Rev 0

[View All Status/Comments](#)

Date	User	Status (S) / Comment (C)	S / C
2/28/2023 10:22:02 AM	Jennifer Pope	Status changed to 'Declaration of Participation Report Started'.	S
2/27/2023 8:31:32 AM	GMS Administrator	Status changed to 'Not Started'.	S

Russellville Independent (523) Public District - FY 2024 - Declaration of Participation Report - Rev 0

Background

The Declaration of Participation Report must be completed by your district in accordance with Every Student Succeeds Act and the Individuals with Disabilities Education Act. This report is used to identify the number of students enrolled in area private non-profit and home schools. Federal programs participating in the Declaration of Participation are Title II, Part A-Supporting Effective Instruction; Title III - English Learners (EL) and Immigrant; Title IV, Part A-Student Support and Academic Enrichment Grants; and IDEA-B - Individuals with Disabilities Education Act.

According to federal law, only private schools having an official non-profit status are eligible to receive services under Title II, Part A; Title III - EL, Title IV, Part A, and IDEA-B. Beginning with school year 2001-2002 and beyond, any private school wishing to participate in such programs must have filed Articles of Incorporation with the office of the Kentucky Secretary of State as a non-profit corporation under KRS 273 or have received a letter from the Internal Revenue Service (IRS) granting them 501(c)(3) status as a non-profit corporation (home schools, by their nature, are considered non-profit).

This report is used to identify the number of students enrolled in area private non-profit and home schools. Federal programs participating in the Declaration of Participation are Title II-A Supporting Effective Instruction, Title III - Language Instruction for English Learners (EL), Title IV-A Student Support and Academic Enrichment Grants and IDEA-B - Individuals with Disabilities Education Act.

Please note: The Title III EL data collection is used to identify the number of English Learner students and the number of Immigrant students enrolled in area private non-profit and home schools.

General Instructions for identifying private and home schools membership

1. Reference the [FY2024 Declaration of Participation Notification](#) for detailed instructions and guidance. In addition, the data entered must be from the Declaration of Participation Forms collected from the private and home schools within the district geographic boundaries. The forms can be sent to the private schools via email if contact email addresses are available. If the district chooses to use this method of distribution, a Read Receipt must be indicated on the email message and the receipt should be retained as evidence that the email was delivered and opened.
2. List each Private Non-Profit & Home School's **total** membership for the end of the 2nd month of the 2022-2023 school year. Do not include 3 & 4 year olds.
3. List all Private Non-Profit and Home Schools physically located in the public district's geographic boundaries. Do not list private or home schools located outside of the school district's geographic boundaries in which the district is required to contact for Title I services for students residing in the district.

NEW Data Entry Instructions

I. District Board of Education page

1. Confirm that the Board of Education is in compliance with the Civil Rights Act of 1964.(required)
2. Select the programs that the district will participate in for the upcoming year.

II. Participation Data page: NEW INSTRUCTIONS

The 2024 report has a newly designed page to capture data. There is a single form with paging links (First, Previous 1,2,3 . . . Next, Last) at the top to move through the list. As schools are edited or added, the page will automatically sort the school names alphabetically.

A. On the Participation Data page, the system will automatically populate the list of schools alphabetically from last year's Declaration of Participation report when the report is moved to Started status.

Use the paging links ((First, Previous 1,2,3 . . . Next, Last)) at the top of the list to move from page to page for a long list.

B. Edit the existing list (if needed) as follows:

1. Name home schools using the parent or guardian's LAST name first and first name last. Example: Smith, Adam and Barbara

Edited school name will be listed in alphabetical order with the new name.

2. Use ONE ROW for each private or home school and list the total membership. Example, if two children in the same home are being home-schooled, list the home ONCE and the membership as 2.

C. Add or delete schools on the list.

1. Add new schools by clicking Add New School. New schools will automatically be added in alphabetical order.

2. Use the trash can icon to delete any schools no longer in existence or out of the district boundaries for 2024.

D. Enter data

1. Enter participation data using the information provided by the private non-profit and home schools on the signed Declaration of Participation Form retained at the district.

2. Select the school type from the drop-down list (PNP- Catholic, PNP Non-Catholic, Home School).

3. Enter TOTAL membership for each home school or private school.

4. Identify the number of students participating in each of the programs (IDEA Basic, Title II, Title III EL, Title III Immigrant and Title IV) for the 2024 school year.

III. Complete the Assurances page

District Board of Education

Russellville Independent (523) Public District - FY 2024 - Declaration of Participation Report - Rev 0

* The District Board of Education is in compliance with the Civil Rights Act of 1964.

The District Board of Education will participate in the following programs for the 2023-2024 school year:

- Title II Part A: Teacher Quality
- IDEA-B: Students with Disabilities
- Title III English Learners
- Title IV
- Title III Immigrant



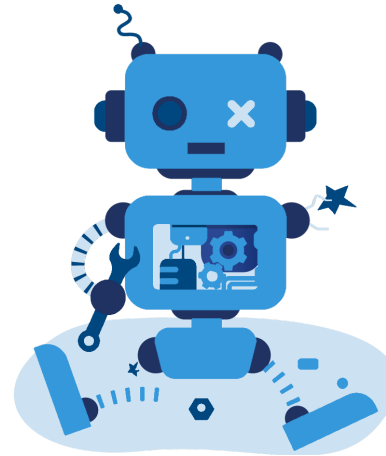
- GMAP Home
- Search ▶
- KDE Resources
- Help for Current Page 0
- Contact KDE
- GMAP Sign-In**

Public Access

Production

GMAP Error

Oops! An unexpected error has occurred.



Please try again.

If you continue to receive this message, please contact your system administrator.

[Back](#)



[Privacy](#) | [Security](#) | [Disclaimer](#) | [Accessibility](#) | [Contact Us](#)

© 2012 Commonwealth of Kentucky.
All rights reserved.



Assurances

Russellville Independent (523) Public District - FY 2024 - Declaration of Participation Report - Rev 0

* The LEA Superintendent certifies that:

1. The LEA Board of Education will participate for SY 2023-2024 in the identified federal programs as indicated in Part A of the Collection Sheet.
 - Yes
 - No
2. All private non-profit schools and home schools physically located in the public LEA's geographic boundaries have been notified by certified mail or other signed documentation of the purposes and benefits of, and given equitable opportunity to participate in, the federal Title IIA, Title III EL/Immigrant, Title IV and IDEA-B programs.
3. Signed Private Nonprofit Schools and Home Schools Declaration of Participation forms are on file in the local board of education office documenting the stated numbers of participating private, non-profit school and home school students.
4. Any private school participating in the above programs has filed with the LEA a signed assurance statement verifying an official non-profit status. Home schools, by their nature, are considered non-profit.