



Data at a Glance

**Kentucky Board of Education
Wednesday, December 7, 2022**



Kentucky Department of
E D U C A T I O N

National Assessment of Educational Progress (NAEP)

2022 Reading and Mathematics, Grades 4 and 8

NAEP Reading, Grade 4 (1 of 3)

2022 Kentucky average
scale score (0–500)

KY - 217

7

jurisdictions
significantly
higher

36

jurisdictions
not significantly
different

8

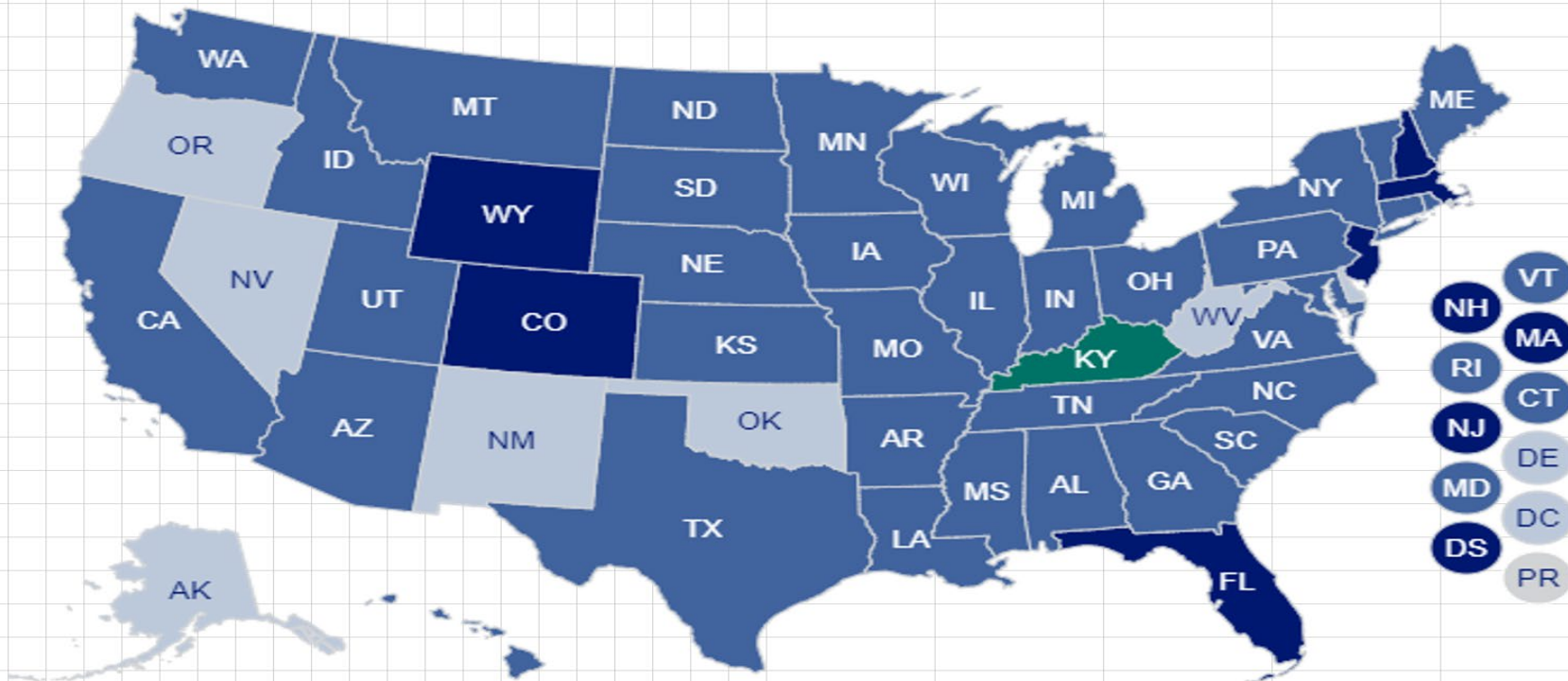
jurisdictions
significantly lower



Reading, grade 4

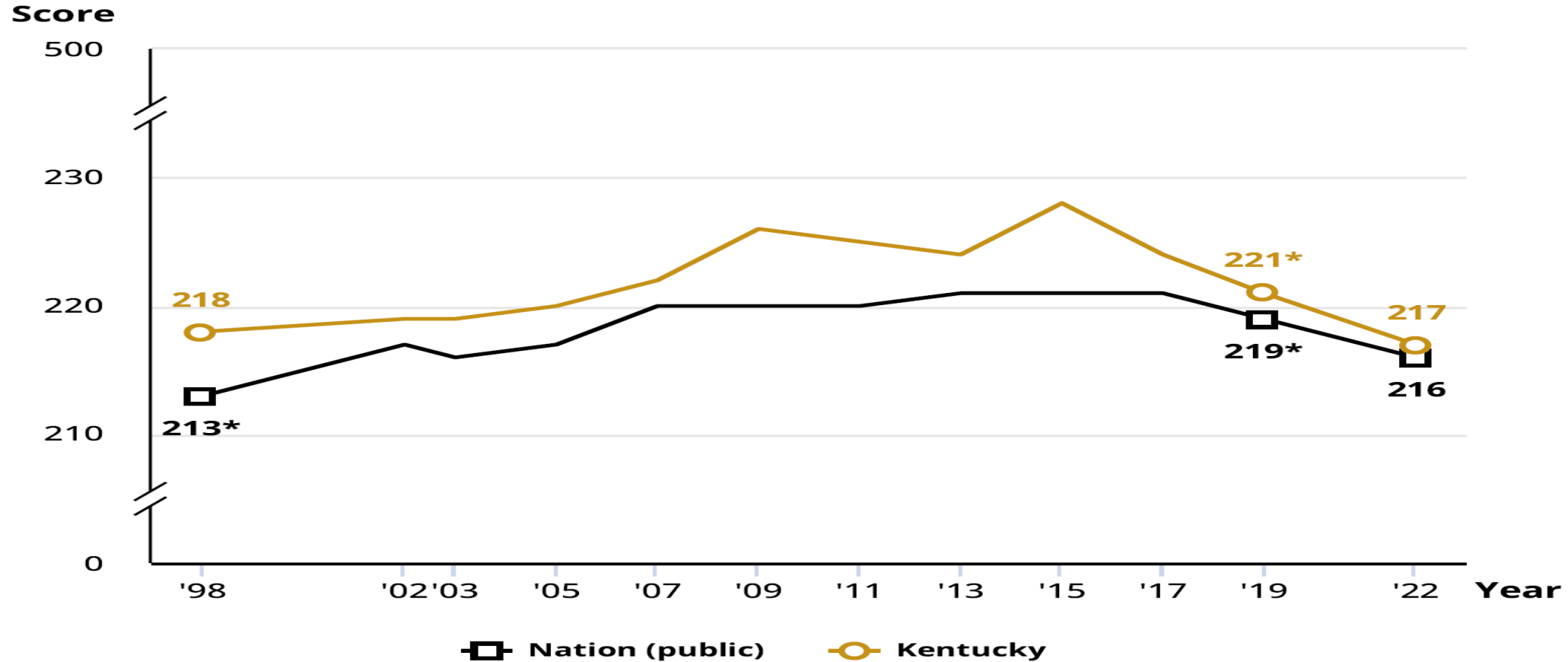
Difference in average scale scores between jurisdictions, for all students [TOTAL] = All students

2022



**Kentucky Ranked 25
(Kentucky 217 -
National Public 216)**

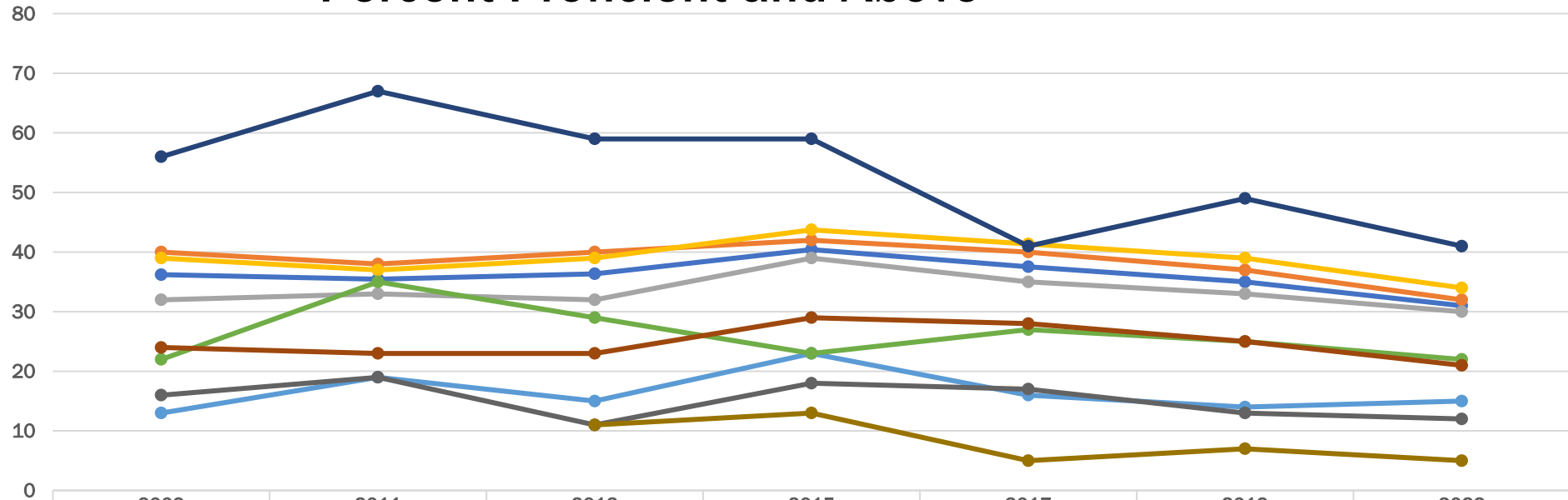
NAEP Reading, Grade 4 (2 of 3)



* Significantly different ($p < .05$) from 2022. Significance tests were performed using unrounded numbers.

NAEP Reading, Grade 4 (3 of 3)

Percent Proficient and Above



	2009	2011	2013	2015	2017	2019	2022
All Students	36	35	36	40	38	35	31
Female	40	38	40	42	40	37	32
Male	32	33	32	39	35	33	30
White	39	37	39	44	41	39	34
African American	13	19	15	23	16	14	15
Hispanic	22	35	29	23	27	25	22
Asian/Pacific Islander	56	67	59	59	41	49	41
Free/Reduced-Price Meals	24	23	23	29	28	25	21
Disability-With IEP	16	19	11	18	17	13	12
English Learner			11	13	5	7	5

NAEP Mathematics, Grade 4 (1 of 3)

2022 Kentucky average
scale score (0–500)

KY - 234

17

jurisdictions
significantly
higher

22

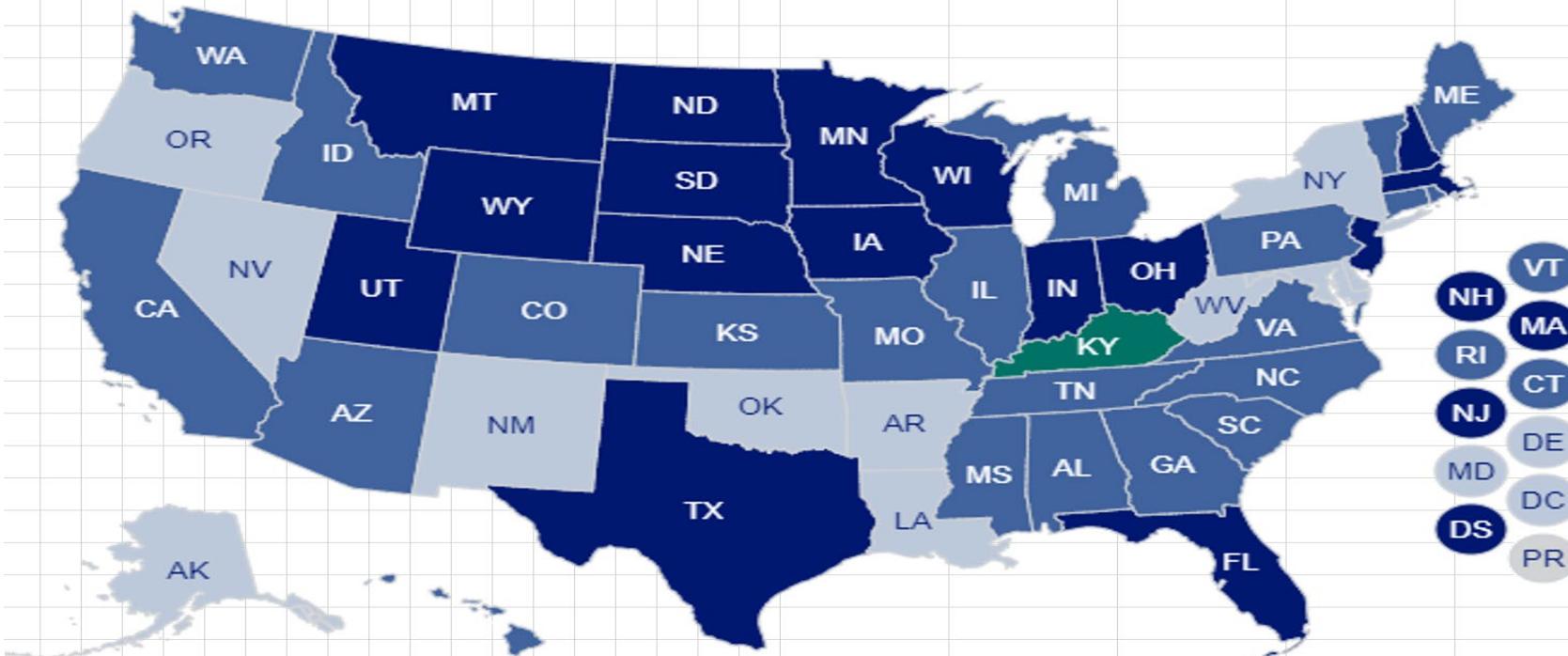
jurisdictions
not significantly
different

12

jurisdictions
significantly
lower

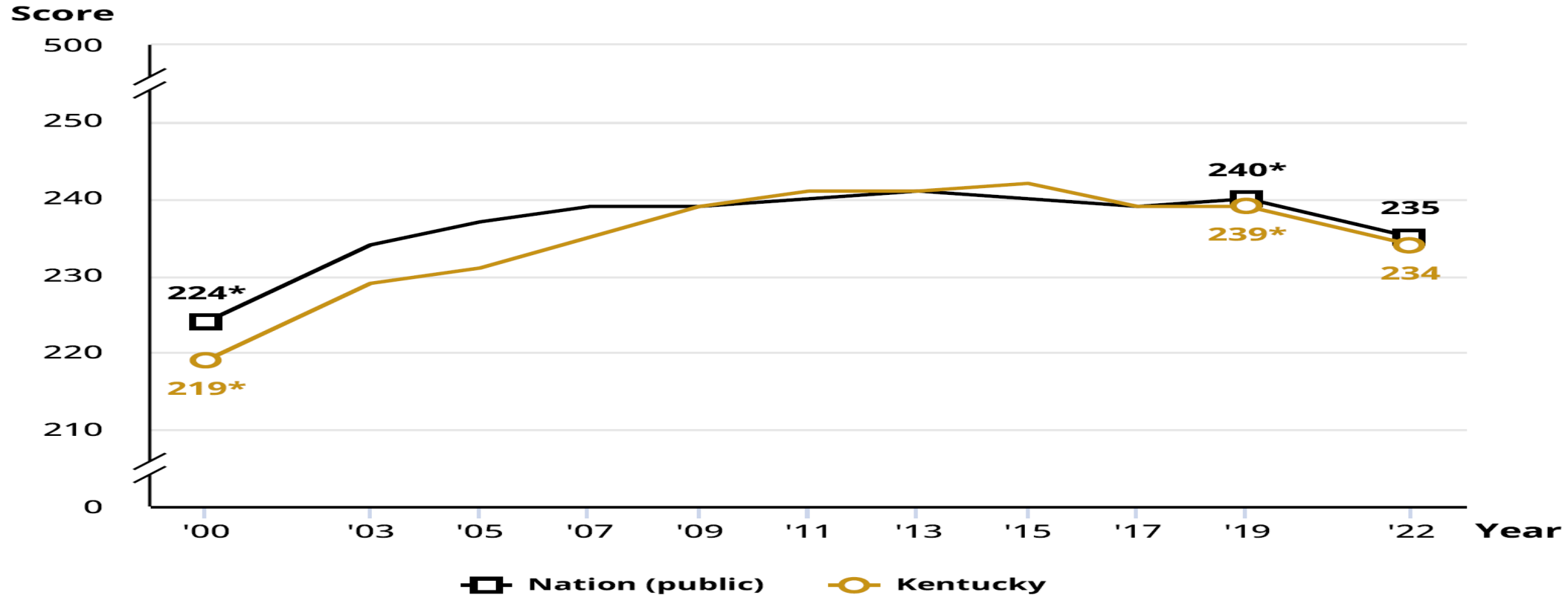
Mathematics, grade 4

Difference in average scale scores between jurisdictions, for all students [TOTAL] = All students
2022



Kentucky Ranked 33
(Kentucky 234 – National
Public 235)

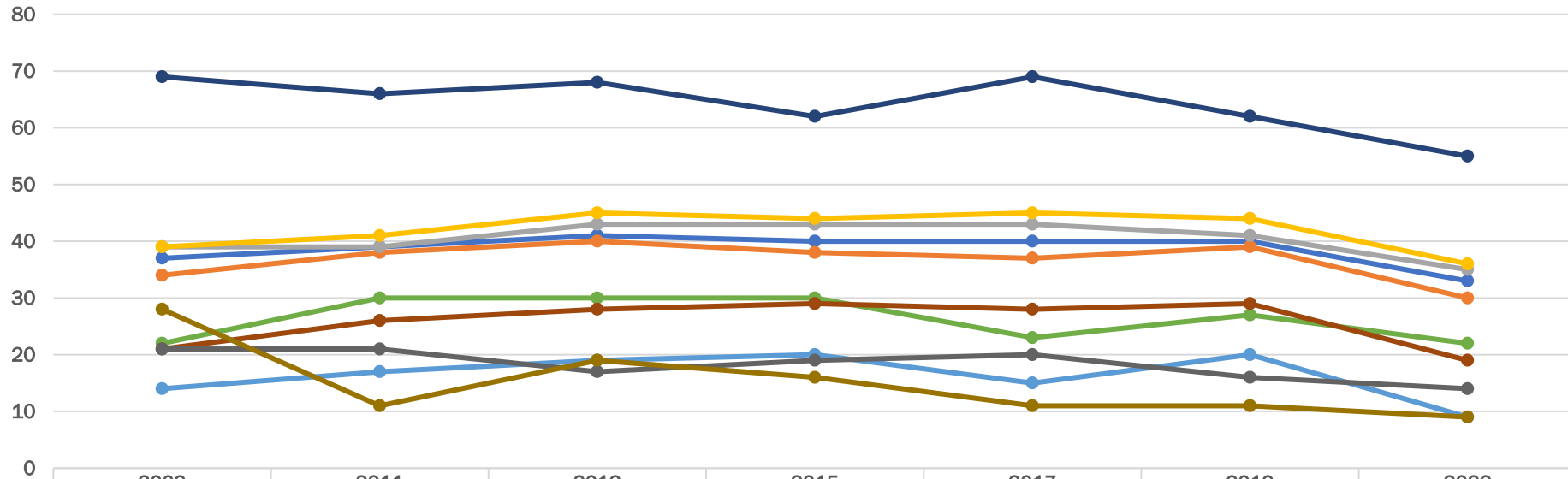
NAEP, Mathematics, Grade 4 (2 of 3)



* Significantly different ($p < .05$) from 2022. Significance tests were performed using unrounded numbers.

NAEP Mathematics, Grade 4 (3 of 3)

Percent Proficient and Above



	2009	2011	2013	2015	2017	2019	2022
All Students	37	39	41	40	40	40	33
Female	34	38	40	38	37	39	30
Male	39	39	43	43	43	41	35
White	39	41	45	44	45	44	36
African American	14	17	19	20	15	20	9
Hispanic	22	30	30	30	23	27	22
Asian/Pacific Islander	69	66	68	62	69	62	55
Free/Reduced-Price Meals	21	26	28	29	28	29	19
Disability-With IEP	21	21	17	19	20	16	14
English Learner	28	11	19	16	11	11	9

NAEP Reading, Grade 8 (1 of 3)

2022 Kentucky average
scale score (0–500)

KY - 258

9

jurisdictions
significantly
higher

33

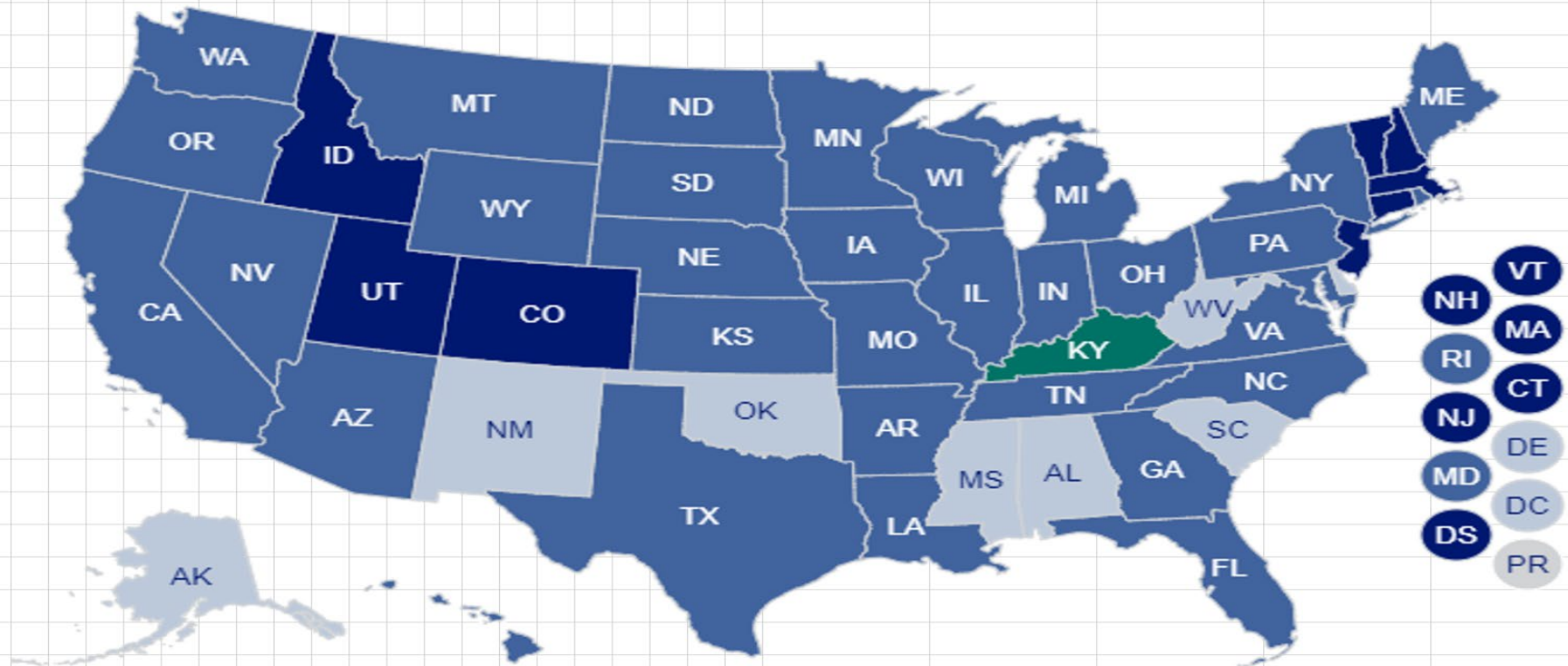
jurisdictions
not significantly
different

9

jurisdictions
significantly
lower

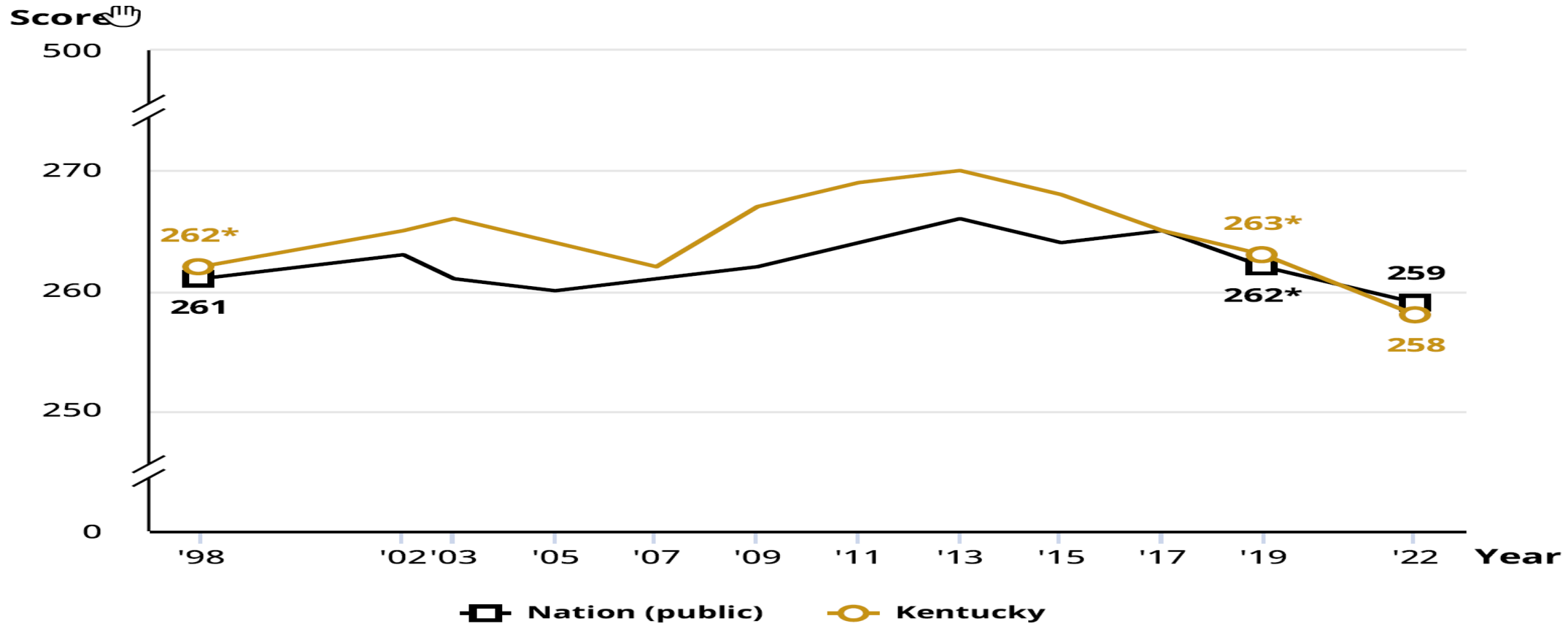
Reading, grade 8

Difference in average scale scores between jurisdictions, for all students [TOTAL] = All students
2022



Kentucky Ranked 33
(Kentucky 258 –
National Public 259)

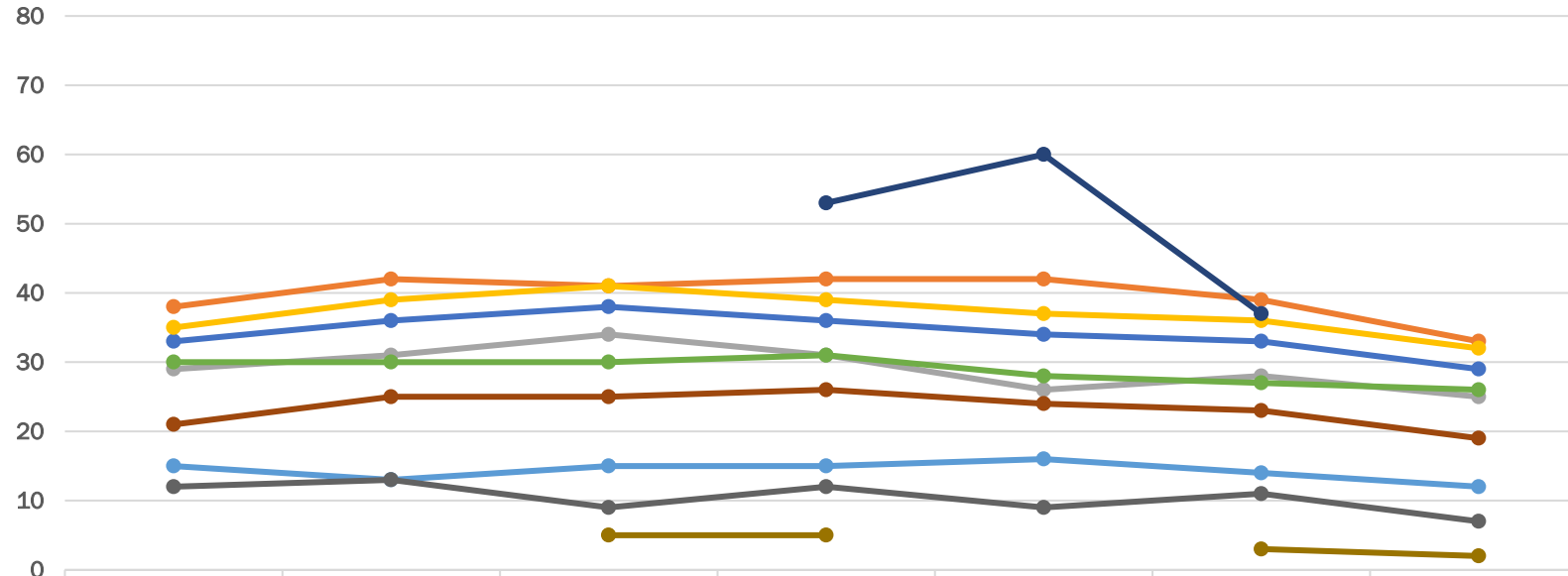
NAEP Reading, Grade 8 (2 of 3)



* Significantly different ($p < .05$) from 2022. Significance tests were performed using unrounded numbers.

NAEP Reading, Grade 8 (3 of 3)

Percent Proficient and Above



	2009	2011	2013	2015	2017	2019	2022
All Students	33	36	38	36	34	33	29
Female	38	42	41	42	42	39	33
Male	29	31	34	31	26	28	25
White	35	39	41	39	37	36	32
African American	15	13	15	15	16	14	12
Hispanic	30	30	30	31	28	27	26
Asian/Pacific Islander				53	60	37	
Free/Reduced-Price Meals	21	25	25	26	24	23	19
Disability-With IEP	12	13	9	12	9	11	7
English Learner			5	5		3	2

NAEP, Mathematics, Grade 8 (1 of 3)

2022 Kentucky average
scale score (0–500)

KY - 269

25

jurisdictions
significantly
higher

20

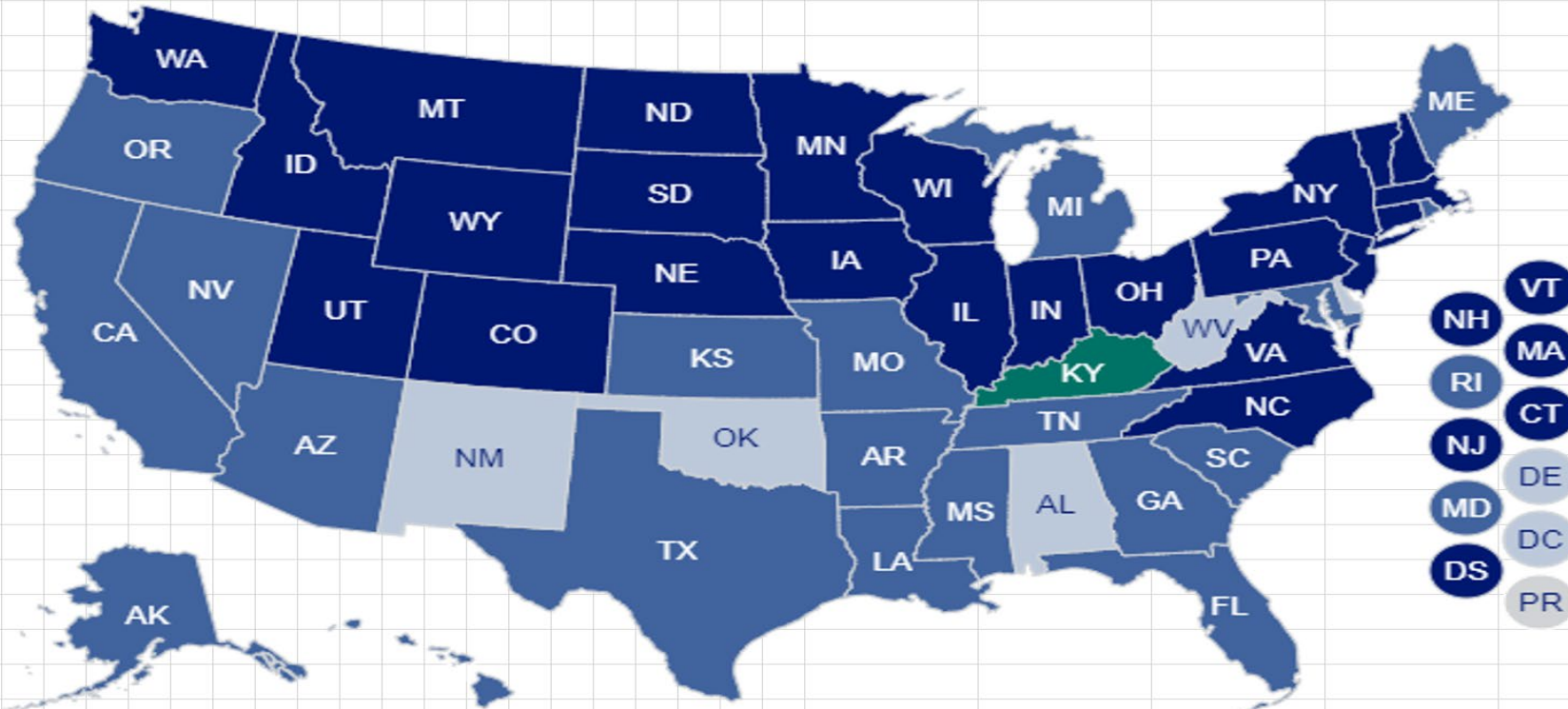
jurisdictions
not significantly
different

6

jurisdictions
significantly lower

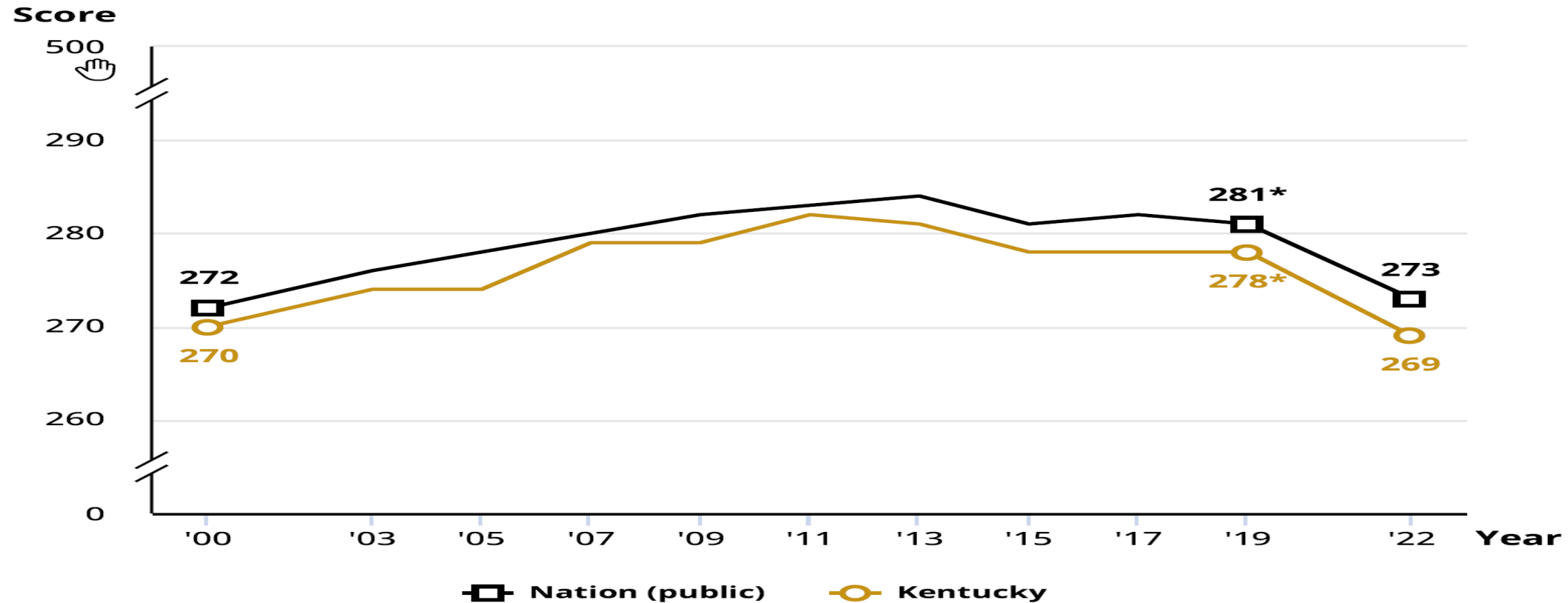
Mathematics, grade 8

Difference in average scale scores between jurisdictions, for all students [TOTAL] = All students
2022



Kentucky Ranked 40
(Kentucky 269 – National
Public 273)

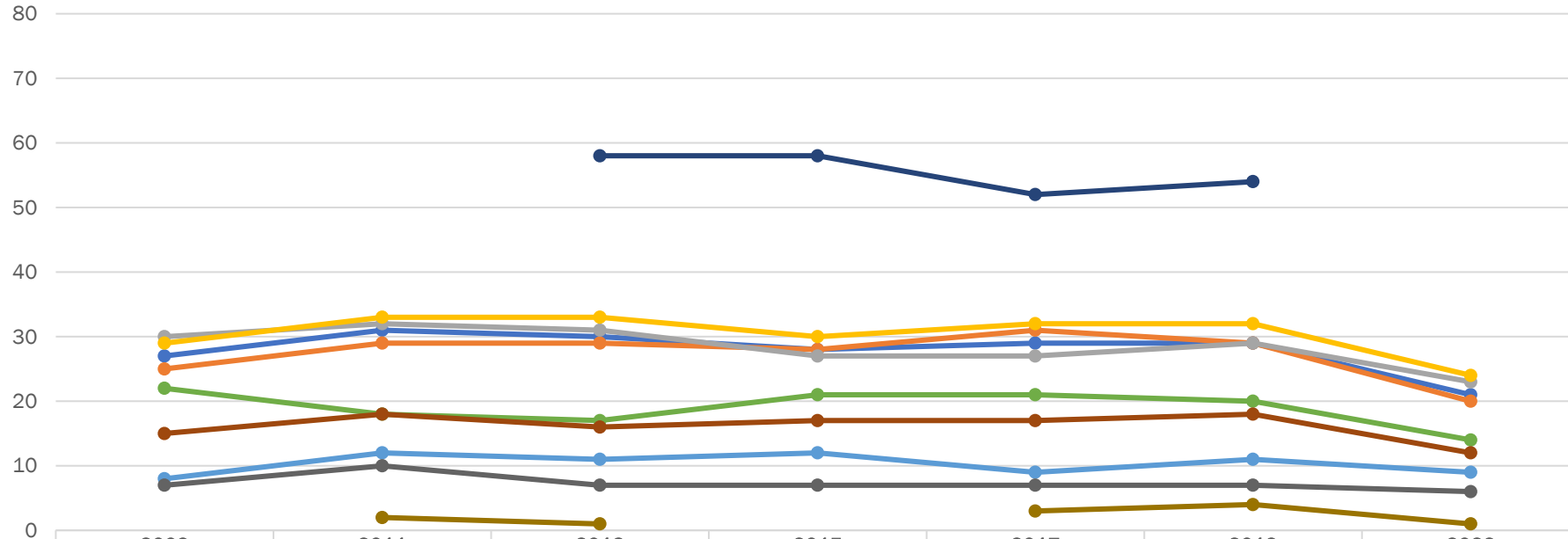
NAEP Mathematics, Grade 8 (2 of 3)



* Significantly different ($p < .05$) from 2022. Significance tests were performed using unrounded numbers.

NAEP Mathematics, Grade 8 (3 of 3)

Percent Proficient and Above



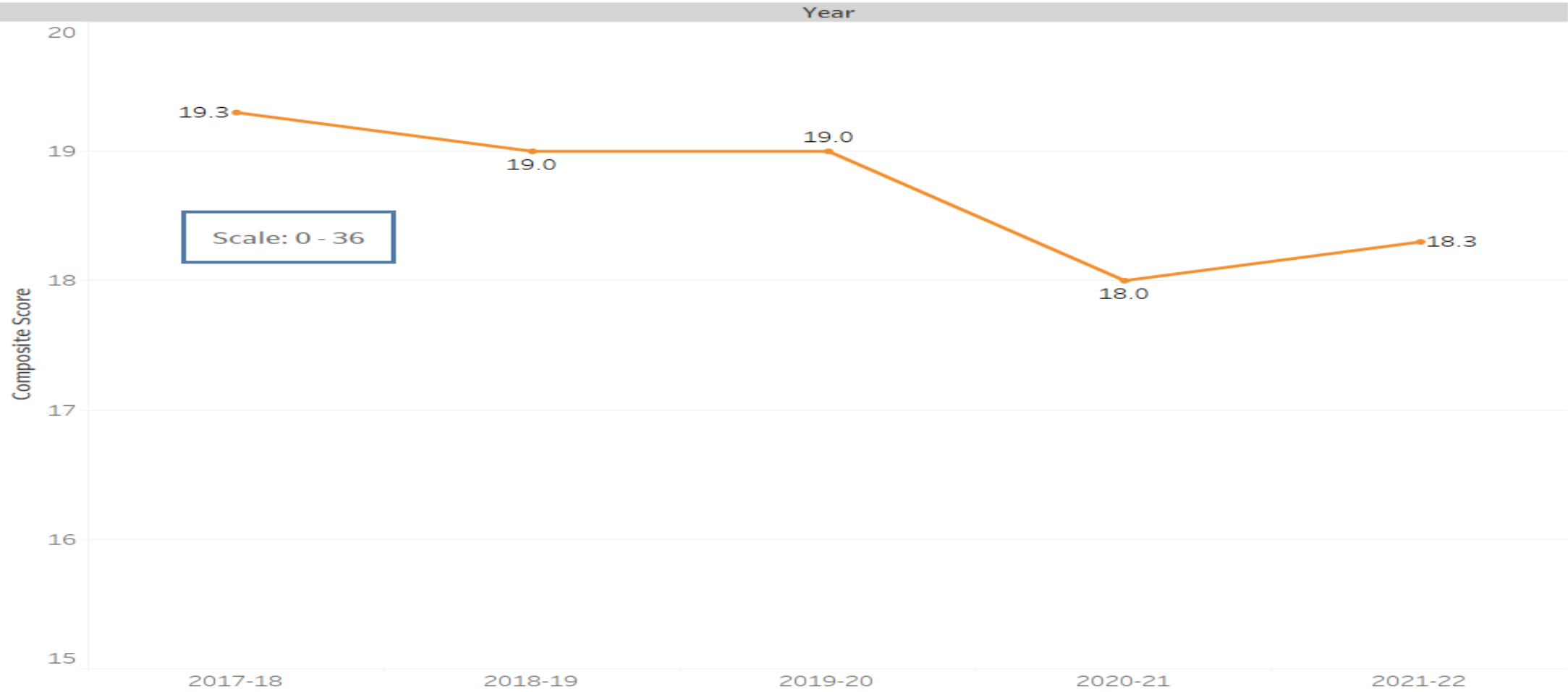
	2009	2011	2013	2015	2017	2019	2022
All Students	27	31	30	28	29	29	21
Female	25	29	29	28	31	29	20
Male	30	32	31	27	27	29	23
White	29	33	33	30	32	32	24
African American	8	12	11	12	9	11	9
Hispanic	22	18	17	21	21	20	14
Asian/Pacific Islander			58	58	52	54	
Free/Reduced-Price Meals	15	18	16	17	17	18	12
Disability-With IEP	7	10	7	7	7	7	6
English Learner		2	1		3	4	1

The ACT

2022 State Junior Administration

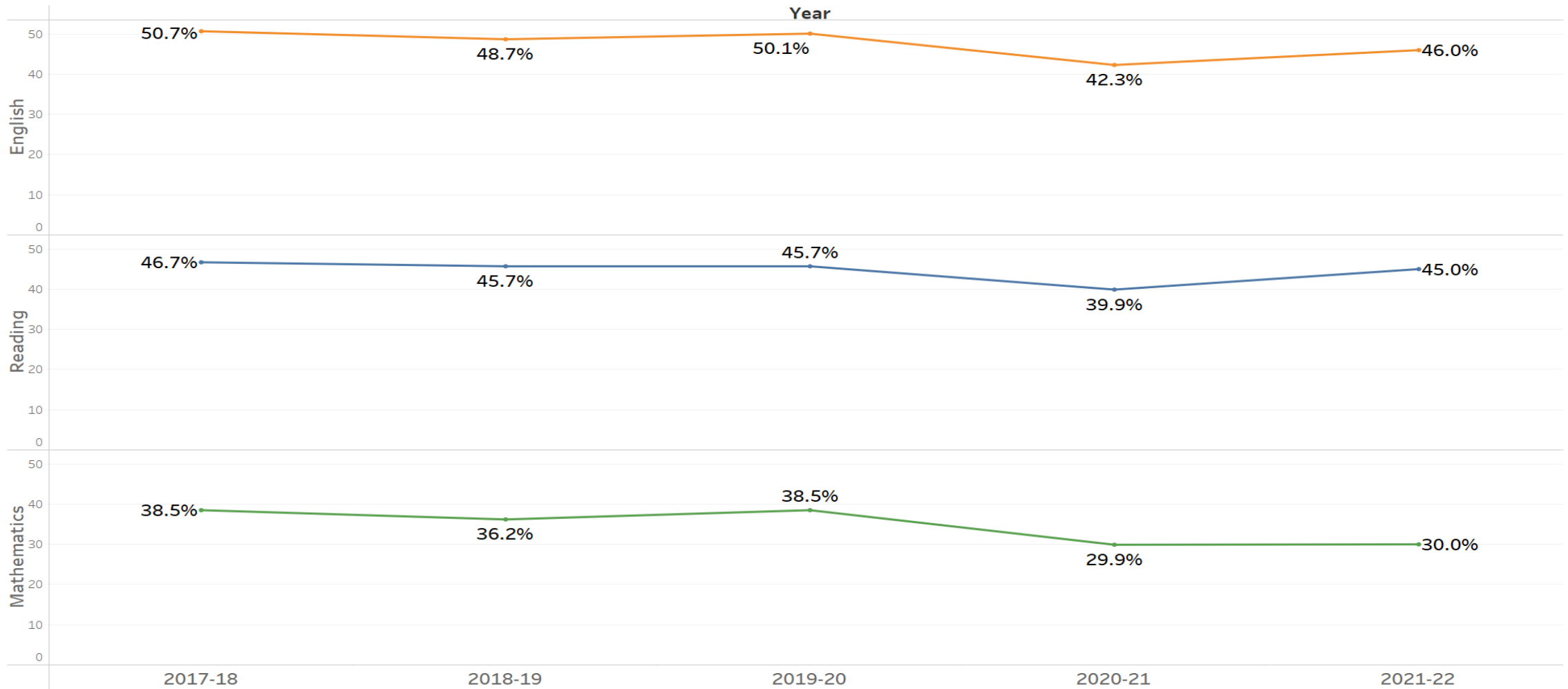
The ACT, Grade 11 (1 of 3)

Composite Score Trends of Kentucky Public School Juniors



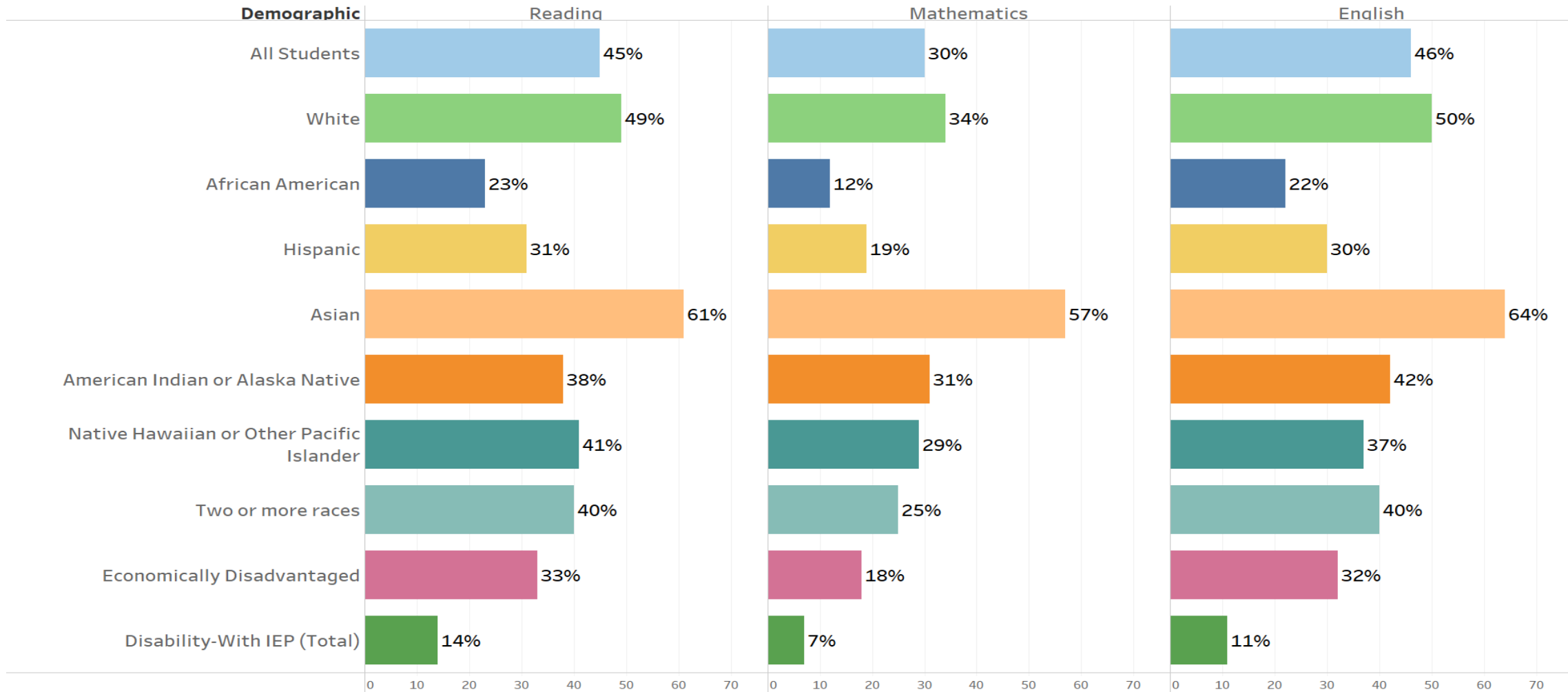
The ACT, Grade 11 (2 of 3)

Percentages of Kentucky Public School Juniors Who Meet CPE Benchmarks for College-Level Readiness by Year



The ACT, Grade 11 (3 of 3)

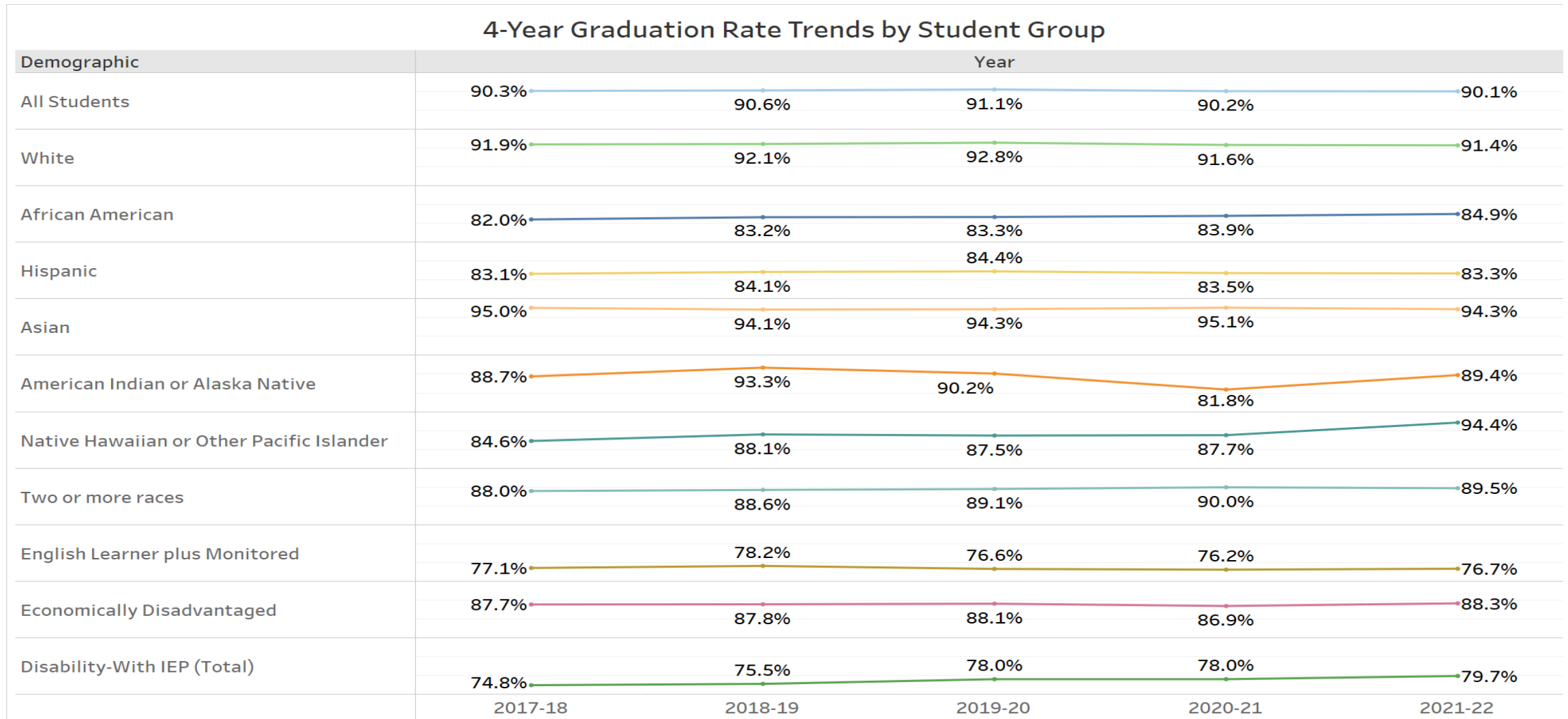
Percentages of Kentucky Public School Juniors Who meet CPE Benchmarks for College-Level Readiness by Student Group



Graduation Rate

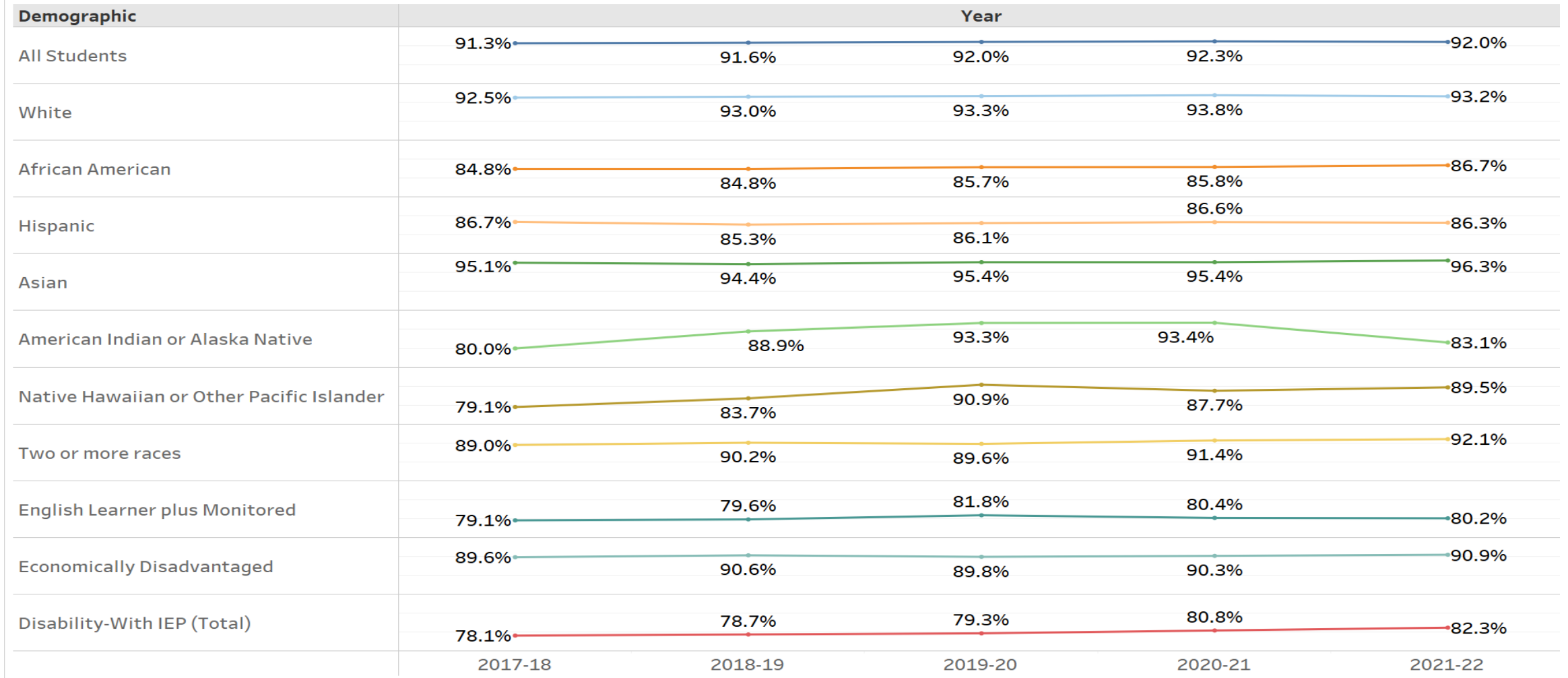
2017-2018 through 2021-2022

4-Year Graduation Rate Trends



5-Year Graduation Rate Trends

5-Year Graduation Rate Trends by Student Group

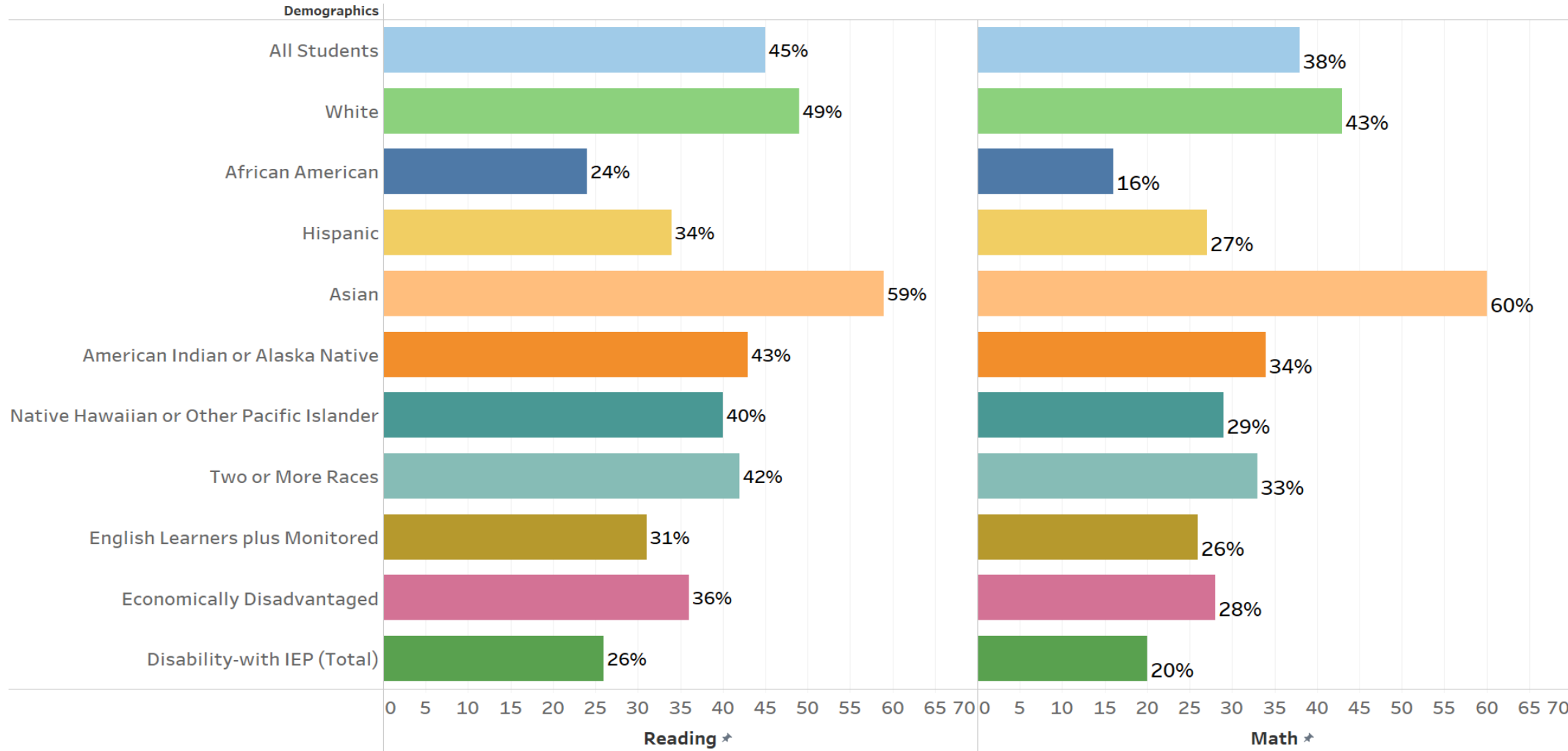


Kentucky Summative Assessment (KSA)

2022 Spring Administration

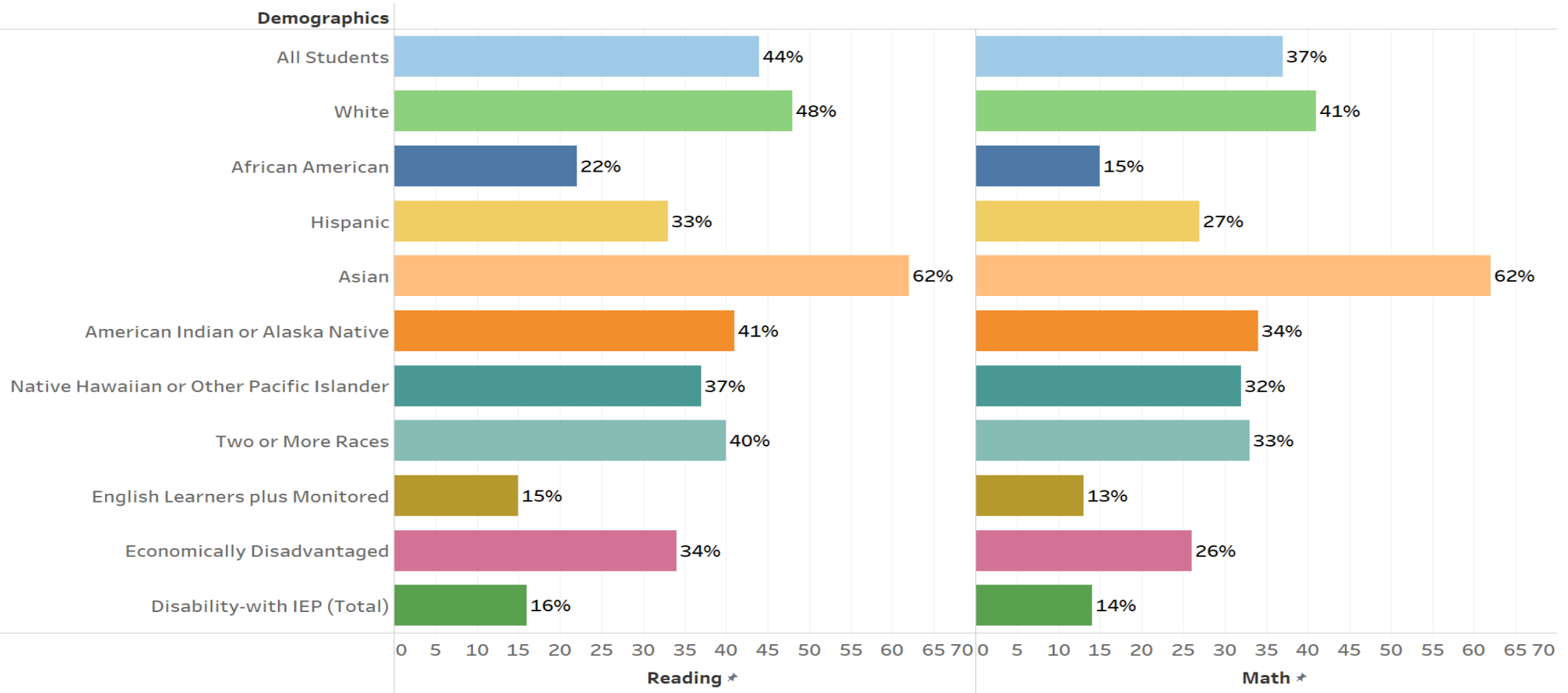
KSA, Reading and Mathematics (1 of 3)

2022 Elementary School Proficient and Distinguished Percentages in Reading and Mathematics by Student Group



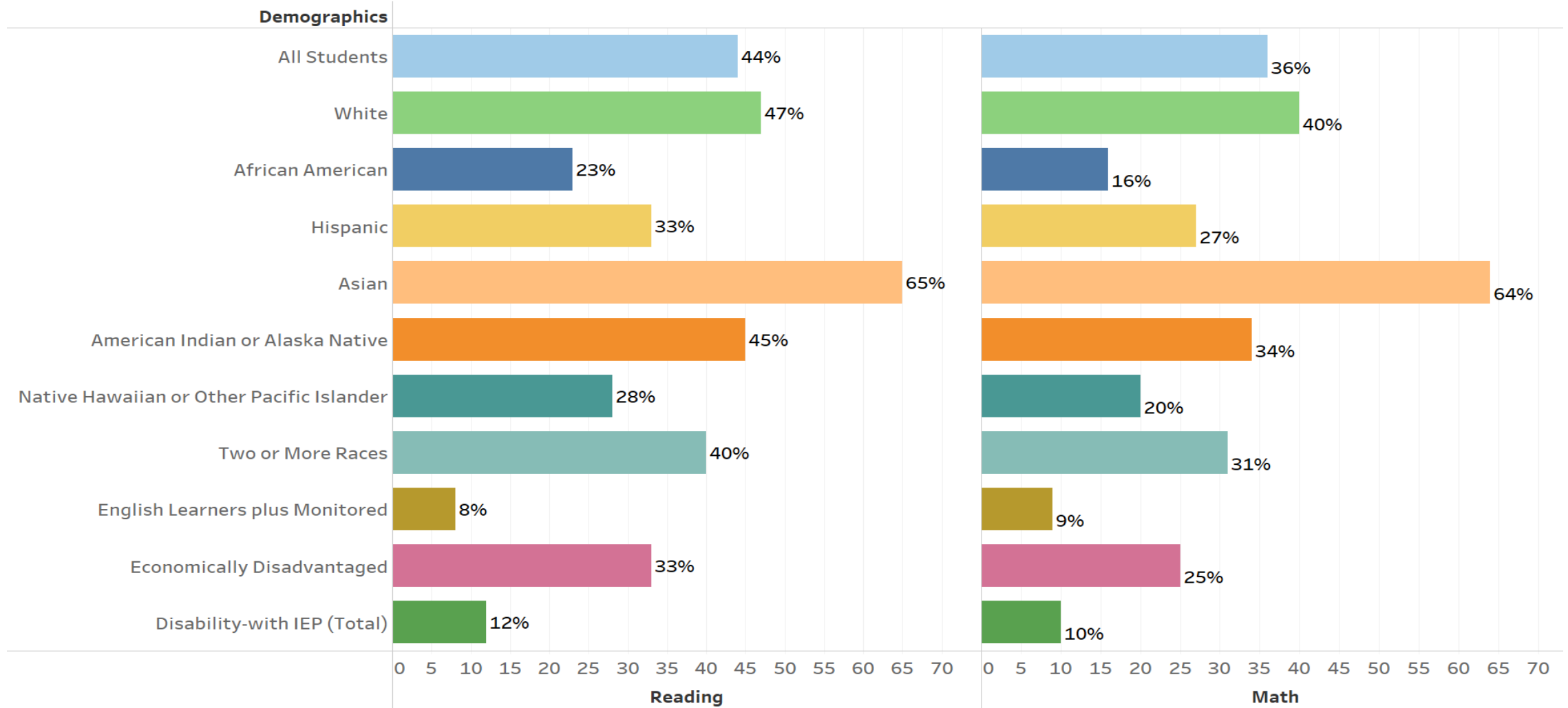
KSA, Reading and Mathematics (2 of 3)

2022 Middle School Proficient and Distinguished Percentages in Reading and Mathematics by Student Group



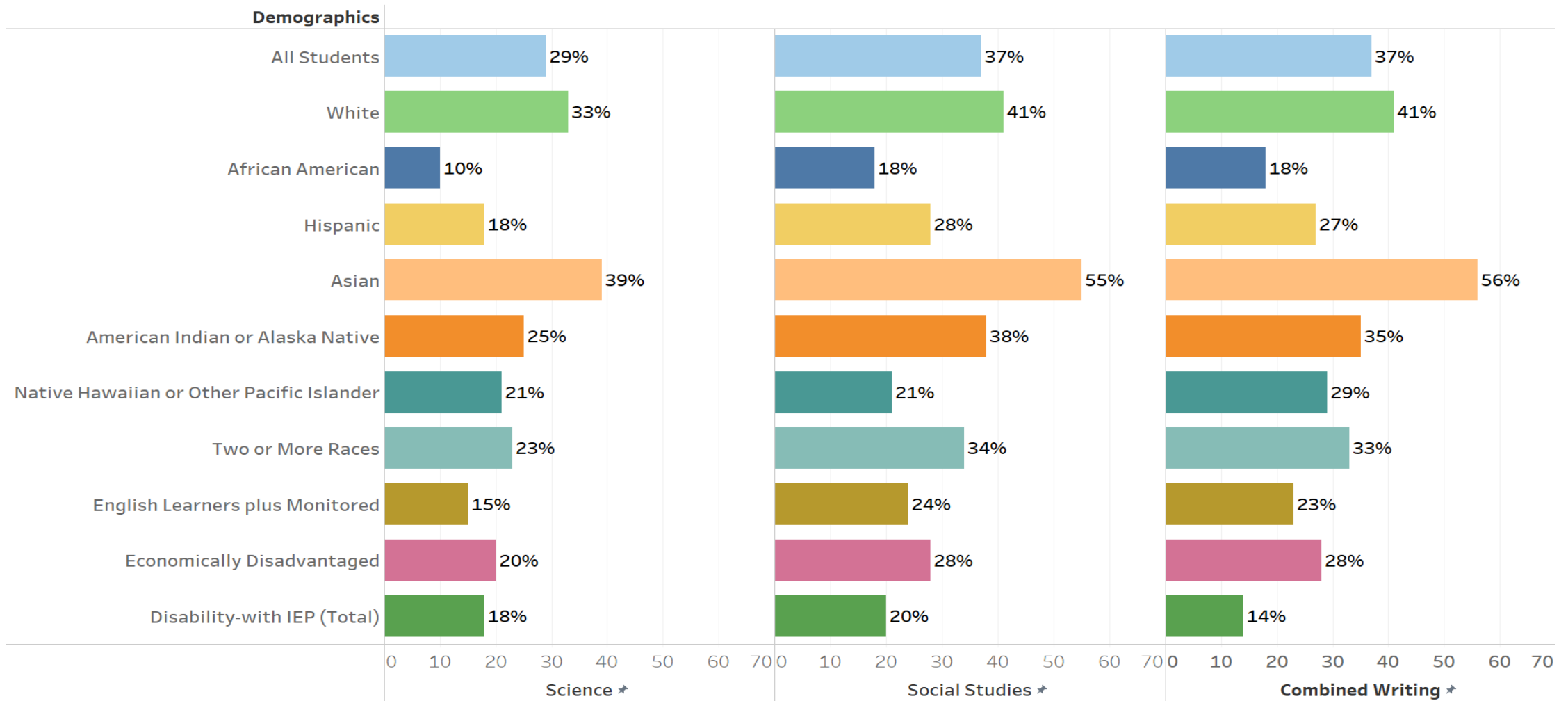
KSA, Reading and Mathematics (3 of 3)

2022 High School Proficient and Distinguished Percentages in Reading and Mathematics by Student Group



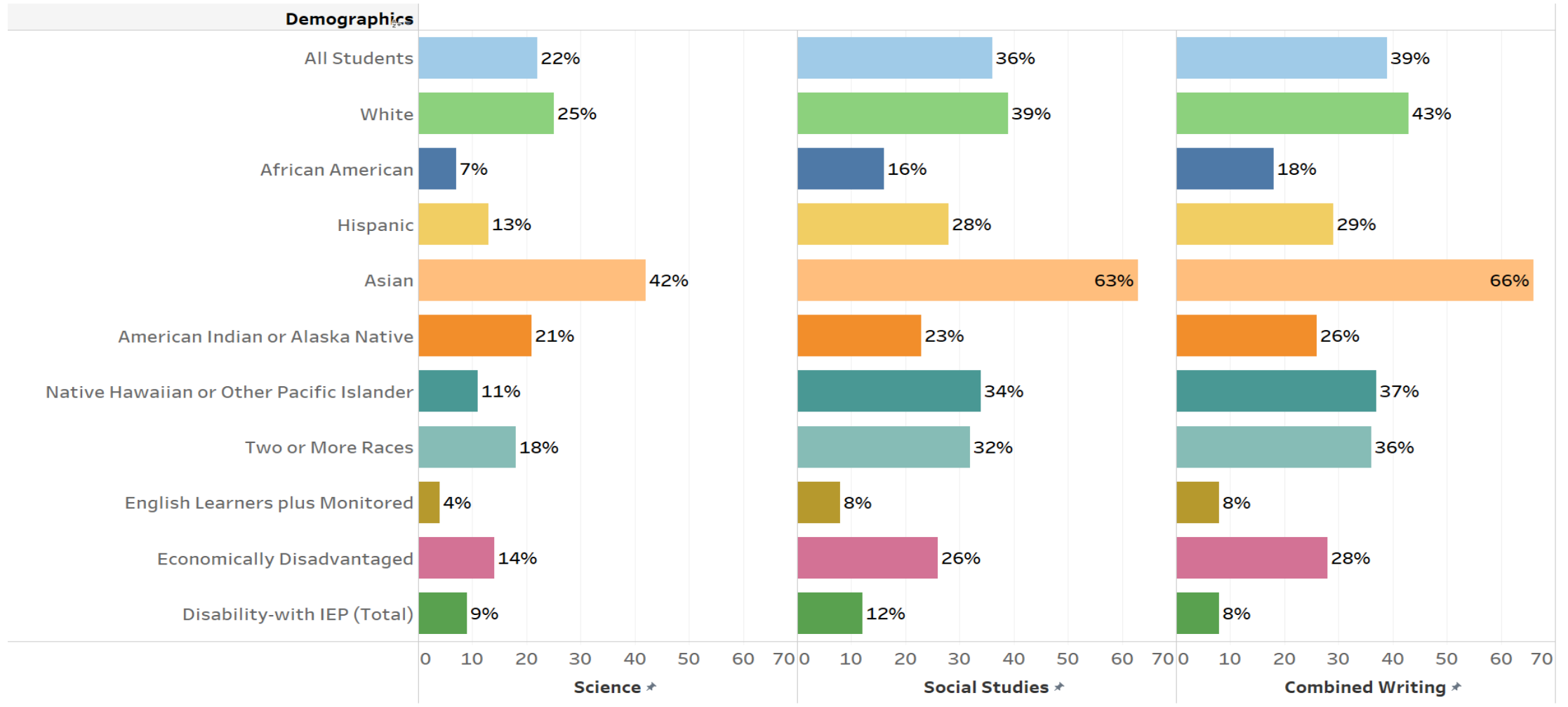
KSA Science, Social Studies and Writing (1 of 3)

2022 Elementary School Proficient and Distinguished Percentages in Science, Social Studies and Combined Writing



KSA Science, Social Studies and Writing (2 of 3)

2022 Middle School Proficient and Distinguished Percentages in Science, Social Studies and Combined Writing



KSA Science, Social Studies and Writing (3 of 3)

2022 High School Proficient and Distinguished Percentages in Science, Social Studies and Combined Writing

