

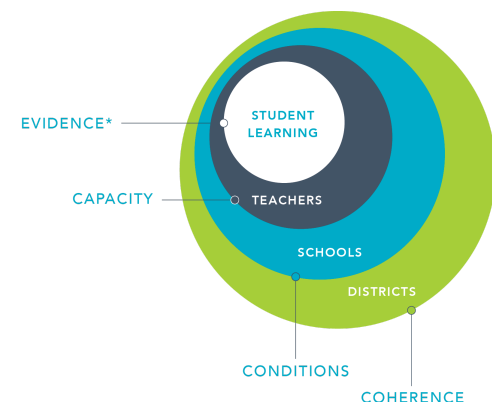
District & School Leadership Services: An Overview

PBLWorks is the industry leader in providing professional development and support services related to Project Based Learning (PBL) and creates, collects, and shares high-quality PBL tools and resources with K-12 teachers and leaders. At PBLWorks, we believe that all students—no matter where they live or their background—should have access to quality PBL instruction to deepen their learning and succeed in college, career, and life.

Our Approach

PBLWorks' approach to systemic implementation of Project Based Learning has been tested in school systems across the United States over the past decade. The ultimate goal is to ensure all students, including those furthest from opportunity, master critical content standards and skills and lifelong success skills such as critical thinking, communication, and collaboration, through high-quality Project Based Learning (PBL). PBLWorks believes PBL can prepare students for college, career, and life, advance educational equity and empower youth furthest from opportunity. Our approach builds capacity on three levels:

- Developing the **capacity** of teachers to design and facilitate high-quality PBL
- Developing the capacity of school leaders to develop the **conditions** and structures necessary to support high-quality PBL
- Developing the capacity of system leaders (district administrators, curriculum and instructional coaches) to create the **coherence** and infrastructure necessary to support and sustain schools' deep implementation of high-quality Project Based Learning that leads to the desired learning outcomes.



For any innovation, including Project Based Learning, to be sustainable, it must be designed to impact all levels of the system. Increasing the capacity of **teachers** can lead to real, positive, and equitable improvements in **student learning** outcomes. Teachers, in turn, require supportive conditions across schools from **school leaders**. **District leaders** must establish system-wide coherence, priorities, and accountability for “whole system” change.

District Leadership Services

Services			
Service	Description	Duration	Target
PBL Visioning Workshop	This highly interactive two-day workshop is designed to provide participants the opportunity to experience a project from the perspective of a learner. This experience provides a strong foundation to establish a shared district vision that communicates their “why” for PBL and how it will enable students to achieve desired outcomes. Participants leave with a strengthened sense of how PBL can lead to more equitable outcomes for students.	2 days	District Leaders, School Leaders, Key Stakeholders
PBL Implementation Lab	The Implementation Lab is a one day workshop for new district partners who are unable to attend the Partner Summit at the beginning of their implementation. Participants are introduced to the PBLWorks District Outcomes and District Conditions Inventory to assess current conditions that support PBL implementation, identify strategies to ensure successful PBL Implementation, and develop an actionable plan for the sustainable implementation of PBL.	1 day	District Leaders and other key stakeholders
District Leader Partner Summit	The District Leader Partner Summit is an annual event that provides current district partners from across the country an opportunity to come together to collaborate around efforts to support teachers and school leaders to implement PBL in their schools effectively. Facilitated by PBLWorks Directors of District & School Leadership, this event will provide the opportunity to collaborate with other district leaders, learn & commit to strategic actions aligned to PBLWorks district outcomes, and time to engage in deep reflection and planning. Participants will leave with a concrete plan to grow and strengthen PBL in their district.	3 days	District Leadership Team
District Leader Implementation Calls	District Leader Implementation Calls are a set of four 90 - minute calls (held once a quarter over a school year) facilitated by a PBLWorks Director of District & School Leadership. The calls are anchored in the PBLWorks District Leader outcomes focusing on the systemic implementation of district-wide PBL implementation plans.	90 minutes (4X per year)	District Leadership Team

District Leader Online Consultancy	This service provides a series of one-on-one consultancy sessions to district leaders during the implementation of PBL with “just in time” guidance and resources from our expert DDSLs. District Leader Online Consultancy is a package of up to forty (40) 30-minute sessions over one school year – designed to support the individual needs of district leaders during the planning and implementation of their district implementation plan. For each session, the participant chooses an available 30-minute time slot and identifies a focus question or need specific to their practice. During the session, the facilitator offers expert guidance to support the leader’s progress in their PBL practice and provides them with resources based on their specific request.	20 hours	District Leaders
--	--	----------	------------------

School Leadership Services

PBLWorks’ School Leadership Services build the capacity of school leaders to build the conditions and structures necessary for teachers to implement and sustain high-quality PBL. This cohort model approach can accommodate up to 10 schools per cohort to maximize collaboration among the schools, support for each school, and timely monitoring of each school’s progress.

Lead Series Phase 1 - designed to occur over 12-18 months

- **Leader Launch:** Identifying what students are expected to know and be able to do upon graduation and how PBL is a vehicle to achieve those outcomes.
- **Culture:** Making learning a central focus of the school through publicly sharing and celebrating learning at all levels.
- **Infrastructure (principals):** Protecting time and resources for teachers to design, implement and reflect on PBL.
- **Leadership Learning Walks (principals):** A PBL leadership learning walk is a "boots on the ground" focused study of PBL implementation and leadership practices at the school level, based on observations made by visiting colleagues.
- **Capacity Building:** Developing job-embedded professional development focused on building teachers’ capacity for PBL.
- **Leader Presentation of Learning:** Presentations of Learning (POL) are an opportunity for school leaders to showcase, share, and celebrate their PBL journey. The product will highlight the work, successes, and challenges that have been overcome and continue to exist.
- **Continuous Improvement 1:** Collecting and using evidence to track what students know and can do due to PBL.
- **Implementation Calls (5): (principals)** 60-minute sessions held throughout the series with up to 15 principals and their PBLWorks facilitator. The question driving the sessions is, “What leadership actions are we taking to create the conditions necessary to support teachers and students with implementing high-quality project based learning in our school?”

Phase 2 (designed to occur over 12-18 months)

- **Leading for HQPBL:** Identifying the qualities of HQPBL and the student experience related to deeper learning. (online)
- **Leading for Assessment in PBL:** Exploring the critical attributes of assessment in a PBL context, including performance assessments and using rubrics to guide students toward high-quality work.
- **Leadership Learning Walks (principals):** A PBL Leadership Learning Walk is a "boots on the ground" focused study of PBL implementation and leadership practices at the school level, based on observations made by visiting colleagues.
- **Making Work Visible:** Implementing structures for school-wide PBL exhibitions and teacher and student learning presentations.
- **Continuous Improvement 2:** Collecting and using evidence to track what students know and can do due to PBL.
- **Leader Presentation of Learning:** Presentations of Learning (POLs) are an opportunity for school leaders to showcase, share, and celebrate their PBL journey. The product will highlight the work, the successes, and the challenges - including those that have been overcome and continue to exist.
- **Implementation Calls (5): (principals)** 60-minute sessions held throughout the series with up to 15 principals and their PBLWorks facilitator. The question driving the sessions is, "What leadership actions are we taking to create the conditions necessary to support teachers and students with implementing high-quality project based learning in our school?"

PBLWorks develops leaders' and their leadership teams' ability to support teachers in designing and teaching Gold Standard Project Based Learning, as defined by PBLWorks in *Setting the Standard for Project Based Learning: A Proven Approach to Rigorous Classroom Instruction* (2015). The goal is for all students, especially those furthest from opportunity, to experience at least two high-quality Project Based Learning experiences per year to master content standards and skills and critical lifelong success skills through these learning experiences.

Each workshop models research-based leadership strategies based on change leadership, systems thinking, the Diffusion of Innovation Theory, implementation science, distributed leadership, data-driven decision-making, and practical approaches to effective strategic planning, communication, and community-building. The Lead Series supports leaders with the resources, tools, and examples they need to be able to strengthen the conditions for PBL to thrive in their setting. There is a strong emphasis on how to provide the support teachers need to shift their practice toward Gold Standard Project Based Learning. Implementation calls offer just-in-time support and allow PBLWorks staff to address unique issues, and challenges leaders face.

SCHOOL LEADERSHIP SERVICES			
Service	Description	Duration	Target
PBL Lead Series (Phase 1)	A series of workshops (7) ideally spaced 60-90 days apart. Includes a 2-day Leader Launch (which includes a project slice on the first day) followed by a series of 1-day workshops emphasizing Culture, Infrastructure, Capacity Building, Leader Presentation of Learning, and Continuous Improvement. A Leadership Learning Walk is held midway through the series.	8 days over 12-18 months	School Principals/ Leadership Teams
PBL Lead Series (Phase 2)	A series of workshops (5) ideally spaced 60-90 days apart designed to help leaders deepen the implementation of Project Based Learning. Topics include: Leading for HQPBL, Leading for Assessment in PBL, Making Work Visible, and Continuous Improvement. We highly recommend including Leadership Learning Walks and a Leader Presentation of Learning during Phase 2.	5 days over 12 - 18 months	School Principals/ Leadership Teams
School Leader Implementation Calls	School principals will participate in five 60 -minute sessions with other cohort principals and their PBLWorks facilitator. The calls are held strategically between workshops; anchored in the PBLWorks School Leadership Continuum Outcomes outcomes; the calls focus on implementing school-level PBL plans.	60 min (5 X during each Phase)	School Principals
School Leader Online Consultancy	<p>In 30-minute PBL leadership coaching calls, individual school leaders experience individualized and structured coaching focused on creating the conditions for high-quality Project Based Learning.</p> <p>For each session, the participant chooses an available 30-minute time slot in our scheduling system and identifies a focus question or need specific to their leadership practice. During the session, the facilitator offers expert guidance to support the leader's progress in their PBL Leadership practice and provides them with resources based on their specific request. Designed to support leaders as they steward the implementation of PBL in their school.</p>	20 hours (Forty 30 minute sessions)	School Principals

Teacher and Instructional Coach Services

TEACHER & INSTRUCTIONAL COACH SERVICES			
Service	Description	Duration	Target
PBL 101 (35 participants)	<p>The PBL 101 Workshop focuses on how to design and plan to implement a Gold Standard project. The PBL 101 Workshop is our foundational three-day workshop based on our Gold Standard frameworks.. The 101 provides participants with the knowledge and skills needed to design, assess, and manage a rigorous, standards-based project. The workshop also lifts up key elements of educational equity and models the project process.</p> <p>Facilitated by one of our expert National Faculty, the workshop is a balanced blend of direct instruction, video analysis, hands-on work, resource sharing, and peer collaboration and feedback. Participants are actively engaged in project design, with the expectation that every teacher or teaching team generate a project plan that receives formative feedback from the facilitator and participants.</p>	3 days (Full Day) or 6 X 2.5-hour sessions (Flex, Online Only)	Teachers
Online Sustained Support Visits (35 participants)	<p>Online Sustained Support Visits provide support with the Gold Standard Project Based Teaching Practices for participants who attended the PBL 101 Workshop. This service, facilitated by a member of our National Faculty, helps to ensure that all teachers who have completed the PBL 101 Workshop have the skills and materials to implement a project effectively. Schools can choose from the following topics:</p> <ul style="list-style-type: none"> • Building a PBL Culture (Available August 2022) • Formative Assessment • Implementation Studio • Literacy • Managing the Process (Available August 2022) • Planning for Sustained Inquiry • Peer Critique • Project Design Refresh (Available August 2022, Full Day Only) • Student Reflection • Taking a Project Online 	Half Day or Full Day Sessions	Teachers who have attended a PBL 101 session.

Teacher Online Consultancy (1-4 participants per call)	Teacher Online Consultancy is a package of up to forty (40) sessions over one school year –designed to support the individual needs of your teachers during the planning and implementation of their projects. Based on your school or district group’s profile (e.g. subject area, grade level), we’ll assemble a unique team of National Faculty members available for sessions with your teachers.	20 hours (40 30-minute sessions)	Teachers who have completed a PBL 101 session.
Teacher Presentation of Learning (35 participants)	Designed for teachers who have implemented at least 2 projects and ideally scheduled at the end of a semester or school year. Participants will share learning with colleagues through a structured presentation on PBL implementation, which models a process that readies teachers for their next project cycle and supports sustained implementation of PBL. Reflect on PBL implementation successes, challenges, and areas for growth.	1-day	Teachers who have attended a PBL 101 and implemented 1-2 projects.
PBL 201 Equity & Gold Standard PBL Improving the Quality of Student Work (35 participants)	<p>The PBL 201s are 3-day workshops for experienced PBL practitioners that deepen skills and knowledge of the Gold Standard Essential Design Elements, Project Based Teaching Practices, and the Equity Levers for PBL. Participants are expected to bring a project that they will refine for project implementation to improve student products and enhance learning.</p> <p>Facilitated by one of our expert National Faculty, the workshops are a balanced blend of direct instruction, video analysis, hands-on work, resource sharing, and peer collaboration and feedback. Participants are actively engaged in project design.</p>	3 days (Full Day)	Teachers
PBL Coaching Workshop (35 participants)	The PBL Coaching Workshop is based on our PBL Coaching Cycle and aligned to Gold Standard Project Based Learning. It provides instructional coaches/leaders with the knowledge and skills to support teachers in project implementation. Facilitated by one of PBLWorks' expert National Faculty, the workshop is a balanced blend of direct instruction, videos from the field, hands-on work, resource sharing, and peer collaboration and feedback. Participants are actively engaged in developing a PBL Coaching Toolkit, with the expectation that this work will be shared with all participants in the workshop. Participants in this workshop must complete the PBL 101 workshop (or equivalent) as a prerequisite and are encouraged to participate in Sustained Support Visit sessions in advance, if possible.	3 days	PBL Coaching Workshop (35 participants)