

**FIELD OBSERVATION REPORT**  
**012-Piner**  
**2022-August/September**



■ **TO:** Mr. Rob Haney  
Kenton County School District  
1055 Eaton Drive  
Ft. Wright, KY 41017

■ **DATE:** 2022.09.22

**ATTENTION:**

■ **FROM:** Ralph Cooper  
rcooper@pca-arch.com  
906 Monmouth Street  
Newport, KY 41071

■ **PROJECT:** KCSD  
Piner Elementary

**COPIES TO:** Ms. Carrie Hooten  
Mr. Kevin Pfefferman  
Mr. Mike Blau

**PROJECT NO.:** 2021-004

■ **WE TRANSMIT THE ATTACHED ITEMS VIA: EMAIL**

**PURPOSE**

- ☐ For your use
- ☐ As requested
- ☐ For review and comment
- ☐ For information
- ☒ For record
- ☐ For approval
- ☐

**DISPOSITION**

- ☐ No exceptions noted
- ☐ Exceptions noted,  
Revise as indicated.
- ☐ REJECTED:  
REVISE AND RESUBMIT
- ☐

COPIES	DATE	DESCRIPTION	PAGES
1	2022.09.22	August/September Field Observation Report	8

■ **REMARKS:**

**Division 01: General Requirements**

*01.01: 2022.08.30 – Work has resumed on the second floor. Due to disruptions from the noise workers have shifted to a second shift.*

*01.02: 2022.09.13 – Workers were on-site working in the kitchen for the anticipated turnover of 2022.09.16.*

*01.03: 2022.09.20 – A TCO has been obtained for the kitchen.*

**Division 02: Existing Conditions**

*02.01: 2022.08.30 – No items noted.*

**Division 03: Concrete**

*03.01: 2022.08.30 – No items noted.*

**Division 04: Masonry**

*04.01: 2022.08.30 – No items noted.*

**Division 05: Metals**

*05.01: 2022.08.30 – No items noted.*

**Division 06: Woods and Plastics**

*06.01: 2022.08.30 – No items noted.*

*06.02: 2022.09.06 – Rough in blocking has been installed.*

*06.03: 2022.09.20 – FRP board has been installed around the electrical panel in the kitchen.*

**Division 07: Thermal and Moisture Protection**

*07.01: 2022.08.30 – No items noted.*

**Division 08: Doors and Windows**

*08.01: 2022.09.20 – New doors have been installed on the second floor.*

**Division 09: Finishes**

*09.01: 2022.08.30 – No items noted.*

*09.02: 2022.09.13 – The flooring, ceiling and walls have been completed in the Faculty Lounge and SRO office and those spaces have been turned over to the District.*

*09.03: 2022.09.13 – Installation of the linoleum flooring continues. Completion of the installation in the first floor classrooms is projected to occur 2022.09.16.*

*09.04: 2022.09.13 – Gypsum board has been installed on the second floor classrooms and finishing is in progress. Installation of the ceiling grid is scheduled to start.*

*09.05: 2022.09.20 – Painting has started in the classrooms.*

**Division 10: Specialties**

*10.01: 2022.08.30 – No items noted.*

*10.02: 2022.09.06 – Toilet accessories have been installed in the Faculty Lounge.*

**Division 11: Equipment**

*11.01: 2022.09.20 – All kitchen equipment has been installed.*

**Division 12: Furnishings**

*12.01: 2022.08.30 – No items noted.*

**Division 20-28: MEP**

*20-28.01: 2022.08.30 – MEP rough-ins have re-started on the second floor.*

*20-28.02: 2022.09.06 - MEP rough-in continues throughout the second floor.*

*20-28.03: 2022.09.06 – MEP rough-in is nearly complete in the Faculty Lounge and SRO office.*

*20-28.04: 2022.09.13 – MEP rough-in continues throughout the second floor. Completion of the electric in the Kitchen was in progress.*

*20-28.05: 2022.09.13 – Work is in progress on refining the operation of the VUV and other MEP items.*

20-28.06: 2022.09.20 – MEP rough-in work continues throughout the second floor.

**Division 31: Earthwork**

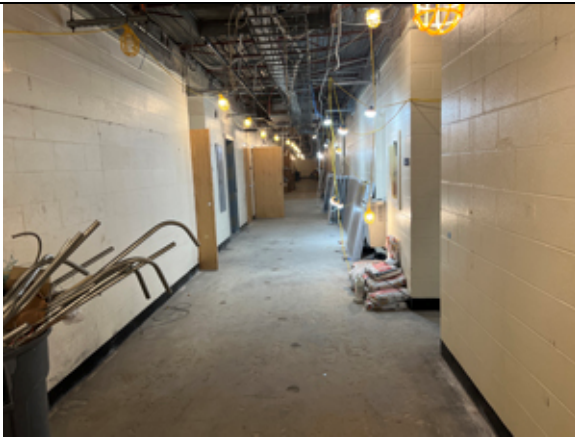
31.01: 2022.08.30 – No items noted.

**Division 32: Exterior Improvements**

32.01: 2022.08.30 – No items noted.

**Construction Photos**

**2022.08.30**



MEP rough-ins are in progress on the second floor.



MEP rough-ins are in progress on the second floor.



MEP rough-ins are in progress on the second floor.



MEP rough-ins are in progress on the second floor.



MEP rough-ins are in progress on the second floor.



MEP rough-ins are in progress on the second floor.



MEP rough-ins are in progress on the second floor.



MEP rough-ins are in progress on the second floor.

**2022.09.06**



MEP rough-ins are in progress on the second floor



MEP rough-ins are in progress on the second floor





MEP rough-ins are in progress on the second floor



Entrance into the new staff toilet room on the second floor.

**2022.09.13**



Gypsum board finishing is in progress throughout the second floor.



Gypsum board finishing is in progress throughout the second floor.



Gypsum board finishing is in progress throughout the second floor.



Gypsum board finishing is in progress throughout the second floor.



Gypsum board finishing is in progress throughout the second floor.



Gypsum board finishing is in progress throughout the second floor.



Gypsum board finishing is in progress throughout the second floor.



Gypsum board finishing is in progress throughout the second floor.

**2022.09.20**



A TCO has been obtained for the kitchen.



A view of the kitchen.





A view of the kitchen.



A view of the kitchen storage room.



A view of the serving line.



A view of a second floor classroom.



A view of a second floor classroom.



A view of a second floor classroom.



A view of a second floor classroom.



A view of the new second floor floor staff toilet room.



New doors have been installed.



A view of a second floor classroom.

- ☐ Please acknowledge receipt of transmitted items.
- ☐ Return transmitted items to PCA ARCHITECTURE <sup>PSC</sup>.

**END**