

FIELD OBSERVATION REPORT 2022-08 (Beechgrove)

■ TO:	Kenton County Board of Education 1055 Eaton Drive Ft. Wright, KY 41017	■ DATE:	2022.08.29
ATTENTION:	Mr. Rob Haney		
■ FROM:	Mark Perry mperry@pca-arch.com 906 Monmouth Street Newport, KY 41071 V: 859.431.8612 • D: 859.578.6013	■ PROJECT:	Kenton County School District Beechgrove Elementary
COPIES TO:	Mr. Chad Atchley, Ms. Carrie Hooten	PROJECT NO.:	21-002

■ WE TRANSMIT THE ATTACHED ITEMS VIA: **eComm**

PURPOSE	<input checked="" type="checkbox"/> For your use	DISPOSITION	<input type="checkbox"/> No exceptions noted
	<input type="checkbox"/> As requested		<input type="checkbox"/> Exceptions noted, Revise as indicated.
	<input type="checkbox"/> For review and comment		<input type="checkbox"/> REJECTED: REVISE AND RESUBMIT
	<input type="checkbox"/> For information		
	<input checked="" type="checkbox"/> For record		
	<input type="checkbox"/> For approval		
	<input type="checkbox"/>		

COPIES	DATE	DESCRIPTION	PAGES
1	2022-08	Field Observation Report	12

Division 03: Concrete

03.01: 2022.07.21 – Slab patching was complete in the kitchen area and had recently occurred in the preschool restroom.

03.02: 2022.08.17 – Slab patching at the first floor mechanical room off the Media Center had occurred, as had the patches at new 2nd floor tie-ins.

Division 04: Masonry

04.01: 2022.07.21 – The new kitchen office was fully enclosed. 1st floor window openings at the Media Center had been toothed in. Media Center walls were 70% complete. 2nd floor classroom walls appeared to be complete, except for final cleaning of surfaces. Exterior masonry openings at the 2nd floor were complete inside classrooms. Work was ongoing at the corridor window and at the tie-in to existing at the existing elevator.

Division 08: Doors and Windows

08.01: 2022.07.21 – Hollow metal door frames and window frames had been set.

08.02: 2022.08.17 – The door frame at the kitchen office had not been prepped for hinges. Continuous hinge was approved for use there.

08.03: 2022.08.17 – Glass had been installed in HM frames at the Media Center.

08.04: 2022.08.17 – Wood doors had been hung throughout. Several installations were questioned.

08.05: 2022.08.17- Aluminum windows had been installed at the 2nd floor.

Division 09: Finishes

09.01: 2022.07.21 – The new preschool restroom had been painted.



09.02: 2022.07.21 – Floor prep was on-going at under slab sanitary line locations. Floor tile replacement was partially complete in the corridor.

09.03: 2022.08.04 – Linoleum tile flooring had been installed in the gym lobby and P.E. office. Floor patching was complete in corridors, classrooms, and kitchen.

09.04: 2022.08.04 – Lay-in ceiling work was on-going outside of the preschool restroom. Ceiling tiles were staged in the Media Center and 2nd floor classrooms.

09.05: 2022.08.04 – The kitchen office had been painted. 1st floor corridor patching around the Media Center had been painted. 2nd floor corridor tie-ins and patching had been primed. 2nd floor classrooms had been painted.

09.06: 2022.08.04 – Soffit framing was 75% complete in the Media Center.

09.07: 2022.08.17 – Soffit framing was complete in the Media Center.

09.08: 2022.08.17 – Striping and final finish coat of the new gym floor was yet to occur.

Division 10: Specialties

10.01: 2022.07.21 – Mirrors had been installed in the public restrooms. Installation of soap dispensers was reviewed with the Owner.

10.02: 2022.08.17 – The GC was still awaiting deliver of toilet partitions.

Division 11: Equipment

11.01: 2022.08.17 – Wall pads were actively being installed in the gymnasium.

Division 20-28: MEP

20-28.01: 2022.07.21 – Ductwork was actively being installed in 2nd floor classrooms. Ductwork installation in the Media Center was 60% complete.

20-28.02: 2022.07.21 – Sprinkler main had been installed in the Media Center.

20-28.03: 2022.08.07 – Ductwork was staged for installation in Classroom #2117 & #2118.

20-28.04: 2022.08.17 – Shower pan installation in the P.E. Office was complete.

20-28.05: 2022.08.17 – Ductwork installation in 2nd floor classrooms appeared complete. Transitions for installation to units were staged for installation.

Division 31: Earthwork

31.01: 2022.08.04 – Topsoil had been distributed at the playground.

31.02: 2022.08.17 – Grass seed had germinated around the asphalt playground. The GC was advised to remove rocks and asphalt chunks that had accumulated near the swing set.

Division 32: Exterior Improvements

32.01: 2022.07.21 – Compacted gravel base was in place at the asphalt playground and appeared ready for asphalt.

32.02: 2022.07.21 – Underdrain work appeared complete at the playground.

32.03: 2022.08.04 – Asphalt had been placed at the playground. Striping had occurred.

32.04: 2022.08.17 – Fencing had been installed at the playground.



CONSTRUCTION PHOTOS



2022.07.21 – Patched slab outside of Kitchen Office



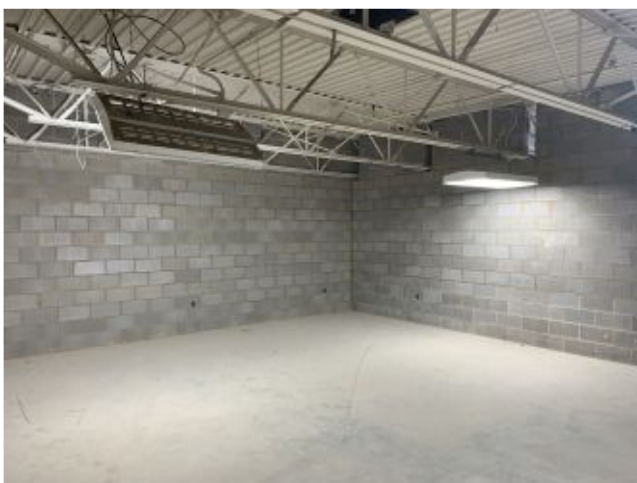
2022.07.21 – Kitchen Office



2022.07.21 Classroom #2120



2022.07.21 Classroom #2120



2022.07.21 Classroom #2117



2022.07.21 Classroom #2117



2022.07.21 Classroom #2119



2022.07.21 – South of Media Center



2022.07.21 Media Center



2022.07.21 Playground



2022.07.21 – New underdrain at playground



2022.07.21 – New underdrain at playground



2022.07.21 – Restroom #1509



2022.07.21 – New preschool restroom interior



2022.07.21 – Classroom, outside of new preschool restroom



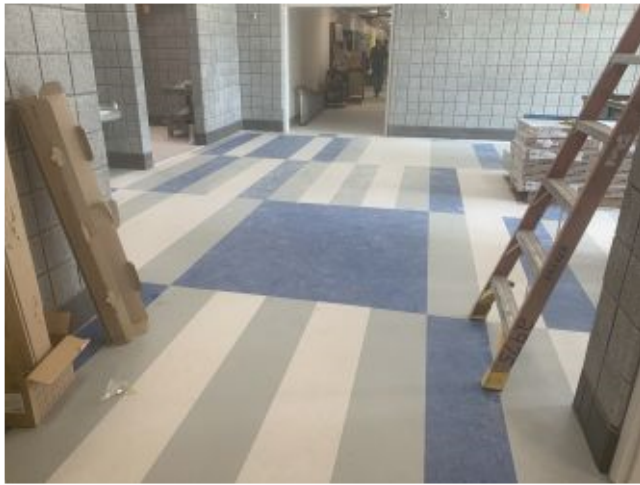
2022.08.04 - Playground



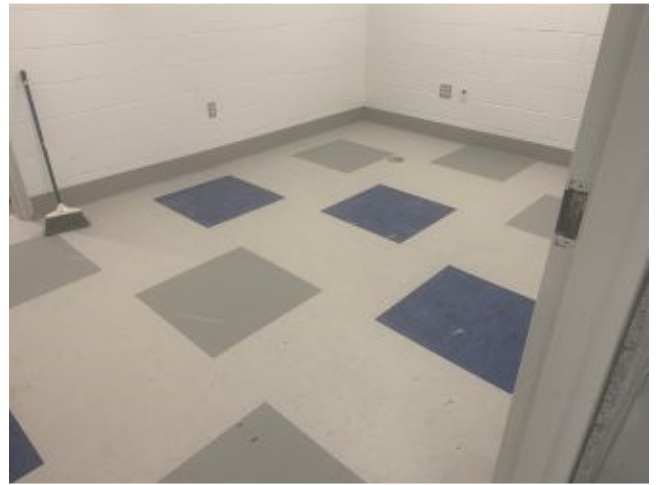
2022.08.04 - Playground



2022.08.07 - Playground



2022.08.04 – Gym Lobby



2022.08.04 – PE Office



2022.08.04 – PE Office Restroom



2022.08.04 – Existing corridor looking towards Gym Lobby



2022.08.04 – Preschool Classroom looking towards new restroom



2022.08.04 – Kitchen Office



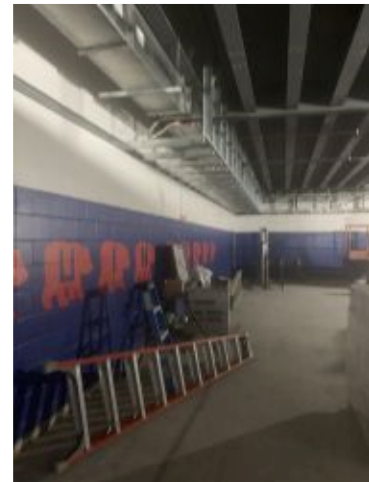
2022.08.04 – North corridor outside of Media Center



2022.08.04 – Media Center



2022.08.04 – Media Center



2022.08.04 – Media Center



2022.08.04 – South of Media Center



2022.08.04 – 2nd floor near elevator



2022.08.04 – Corridor #2121



2022.08.04 – Classroom #2119



2022.08.04 – Classroom #2120



2022.08.04 – Corridor #21113



2022.08.04 – Classroom #2117



2022.08.04 – Classroom #2118



2022.08.17 – Kitchen Office



2022.08.17 – Gym Storage



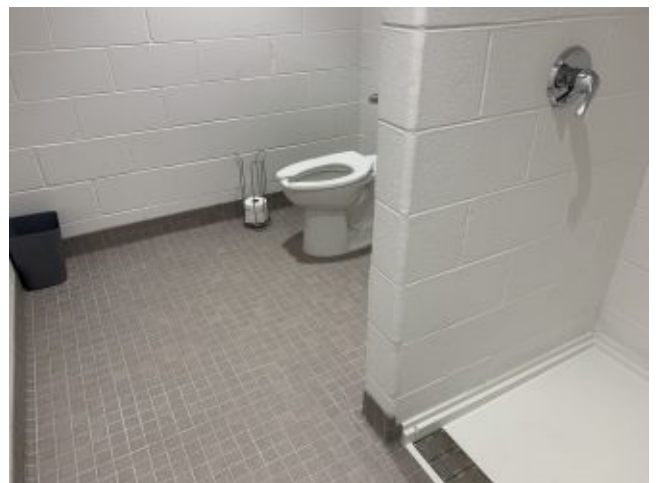
2022.08.17 – Gym



2022.08.17 – Gym



2022.08.17 – Gym Lobby



2022.08.17 – P.E. Office Restroom



2022.08.17 – Gym entrance vestibule



2022.08.17 - Playground



2022.08.17 - Playground



2022.08.17 - Playground



2022.08.17 – Corridor North of Media Center



2022.08.17 – Media Center



2022.08.17 – Media Center



2022.08.17 – Media Center



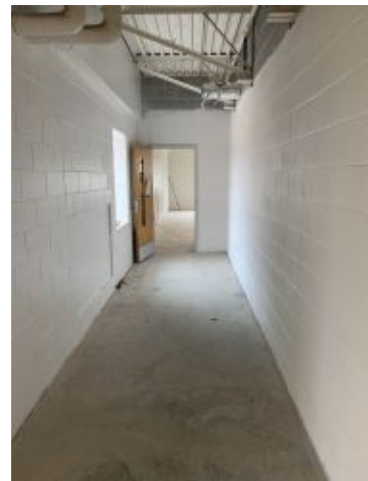
2022.08.17 – South of Media Center



2022.08.17 – 2nd floor near elevator



2022.08.17 - Corridor #2121



2022.08.17 - Corridor #2121



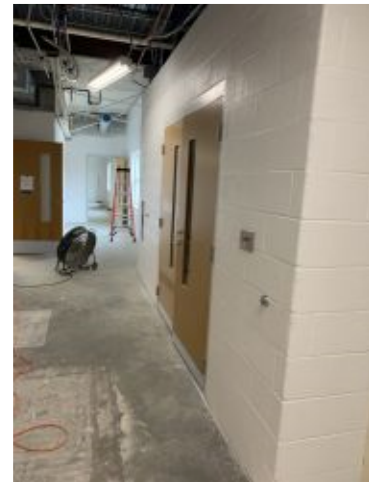
2022.08.17 – Classroom #2119



2022.08.17 – Classroom #2120



2022.08.17 – Classroom #2120



2022.08.17 – Corridor #2113

- ☐ Please acknowledge receipt of transmitted items.
- ☐ Return transmitted items to PCA ARCHITECTURE ^{PSC}.

END