

FIELD OBSERVATION REPORT 10



PCA ARCHITECTURE

■ TO: Rob Haney
Kenton County Schools
1055 Eaton Drive
Fort Wright, Ky 41017

■ DATE: 7.15.22

ATTENTION:

■ FROM: Jim Kaiser
jkaiser@pca-arch.com
1881 Dixie Highway, Suite 130
Ft. Wright, KY 41011

■ PROJECT: Addition & renovation to
White's Tower Heights
Elementary

COPIES TO: Mr. Mike Blau, Ms. Carrie Hooten

PROJECT NO.: 2021-003

■ WE TRANSMIT THE ATTACHED ITEMS VIA: **EMAIL**

- PURPOSE
- For your use
 - As requested
 - For review and comment
 - For information
 - For record
 - For approval
 -
 -

- DISPOSITION
- No exceptions noted
 - Exceptions noted,
Revise as indicated.
 - REJECTED:
REVISE AND RESUBMIT
 -

COPIES	DATE	DESCRIPTION	PAGES
1	7/15/22	Field Observation Report 10	

■ REMARKS:

Division 01: General Requirements

01.01:

Division 02: Existing Conditions-Selective Demolition

02.01: Interior demolition of existing kitchen and former principal and assistant principal offices is complete

02.02: Demolition has been completed in new Family Resource Center space.

Division 03: Concrete

03.01: Slab for new connector corridor has been poured

03.02: Preschool courtyard bike track has been poured

03.03: Concrete pads at exterior doors have been poured

Division 04: Masonry

04.01: CMU and brick veneer at connector corridor is complete

04.02: Infill of former table pockets in cafeteria wall is complete.

Division 05: Metals

05.01: Roof joists and metal decking at connector corridor has been completed

Division 06: Woods and Plastics

06.01:

Division 07: Thermal and Moisture Protection

07.01: Roofing on new additions is approximately 90% complete except at connector corridor

Division 08: Doors and Windows

08.01: Windows have been installed at cafeteria and in process at the preschool classrooms

Division 09: Finishes

09.01: Block filler and first coat of paint has been applied to all cmu walls except the cafeteria and connector corridor

09.02 Suspended ceiling grid installation has begun in the classrooms

Division 10: Specialties

10.01:

Division 11: Equipment

11.01: Walk-in cooler/freezer has been installed

Division 12: Furnishings

12.01:

Division 14: Conveying Systems

14.01:

Division 20-28: MEP

20-28:01: Above ceiling rough-in for electric and HVAC piping & ductwork is approximately 85% complete in the new classrooms and corridor of the addition

20-28:02: Sprinkler piping rough-in in new addition is complete except the cafeteria and connector corridor

20-28:03: Sprinkler installation in existing building is approximately 90% complete

20-28:04: Slabs have been sawcut/removed and below slab plumbing has started in new administration suite (former kitchen)

20-28:05: Electric rough-in has started in new Family Resource Center space.

Division 31: Earthwork

31.01: Preschool courtyard has been finished to rough grade elevations

Division 32: Exterior Improvements

32.01:

CONSTRUCTION PHOTOS

Please acknowledge receipt of transmitted items.

Return transmitted items to PCA ARCHITECTURE PSC.

END



Cafeteria/kitchen addition



New connector corridor



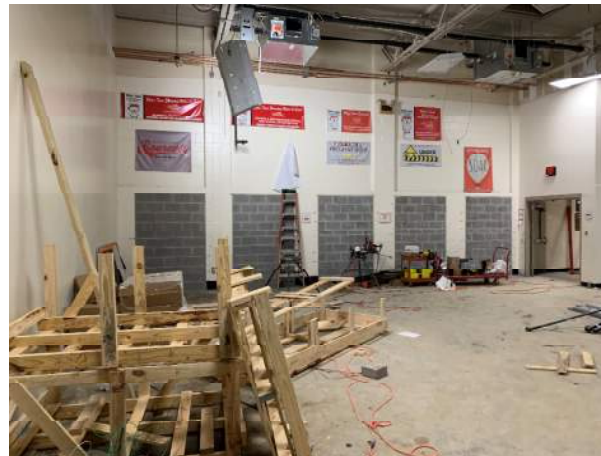
Preschool courtyard – bike track



Classroom addition – west elevation



Cafeteria addition



Existing cafeteria



New administration suite (former kitchen)



New kitchen walk-in cooler/freezer



Typical new classroom



Typical preschool classroom



New addition north-south corridor



New connector corridor