

Engineering Observation Report



Project **Woodford Co. High School**
Emergency Structural Repairs

Location **Versailles, Kentucky**

Architect **Ross Tarrant Architects**

Contractor **Haire Construction**

Project No. **2021-179**

Date Observed **June 8, 2022**

Sheet **1** of **2**

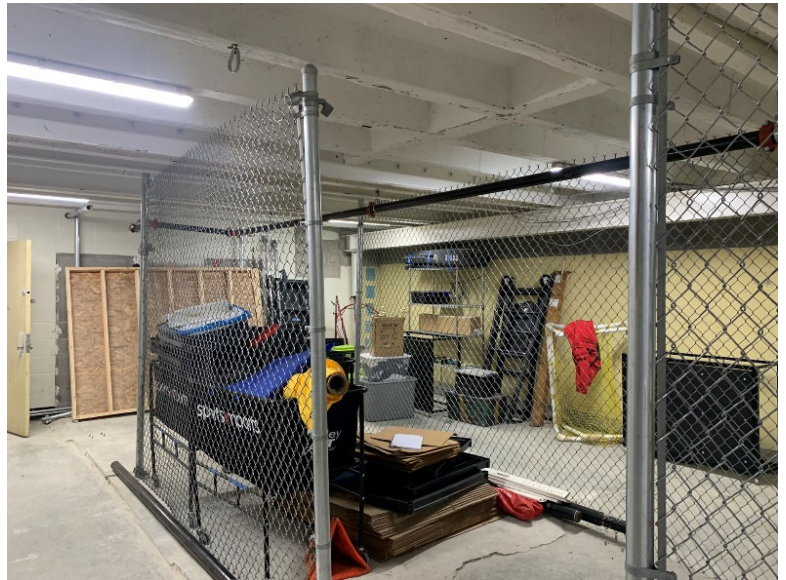
Weather **Sunny, 80s**

Observed By **Joe Connor**

ph. (615) 255-5537 fax (615) 255-1486

A general engineering observation was performed to observe structural work to date. The following items were noted:

1. Please see the photos below. The new support framing and concrete infill was complete.





2. The gap between the channels and the existing concrete joists were within an acceptable limit.



3. Refer to the photo on the left below. The channels have been welded to the supporting beam. It is not a structural concern, but the Architect should review the aesthetics of the welds.



4. See the photo on the right above. The Contractor did not install the screw anchor at mid-span where the stiffening infills were removed. It is structurally acceptable to leave one screw anchor out at each side of the concrete joist at this location.
5. In general, the project appears to be going well.

snh

c: Michael Hughes, Ross Tarrant Architects, mhughes@rosstarrant.com
Luke Haire, Haire Construction, lukehaire@championwp.com
Robert Lyons, LE Gregg Associates, rlyons@legregg.com
Charles Haynes, Joe Connor, SDG