



Summer Learning Opportunities

Jefferson County Board of Education
June 7, 2022

Vision

- To re-engage students to help them prepare for a successful school year in 2022-23
- To give students opportunities to learn about new things and discover new talents and passions
- To give students access to social-emotional skill development
- To practice and strengthen numeracy skills
- To practice and strengthen literacy skills

Components

- ThinkLaw curriculum
- Imagine Learning
 - Imagine Math and Reading
 - Robotify
- Enrichment activities
- Edmentum/Exact Path
- FEV Tutor
- The Leader in Me- social emotional development program (may not be available at all sites)
- High School Credit Recovery available at school sites

Sites

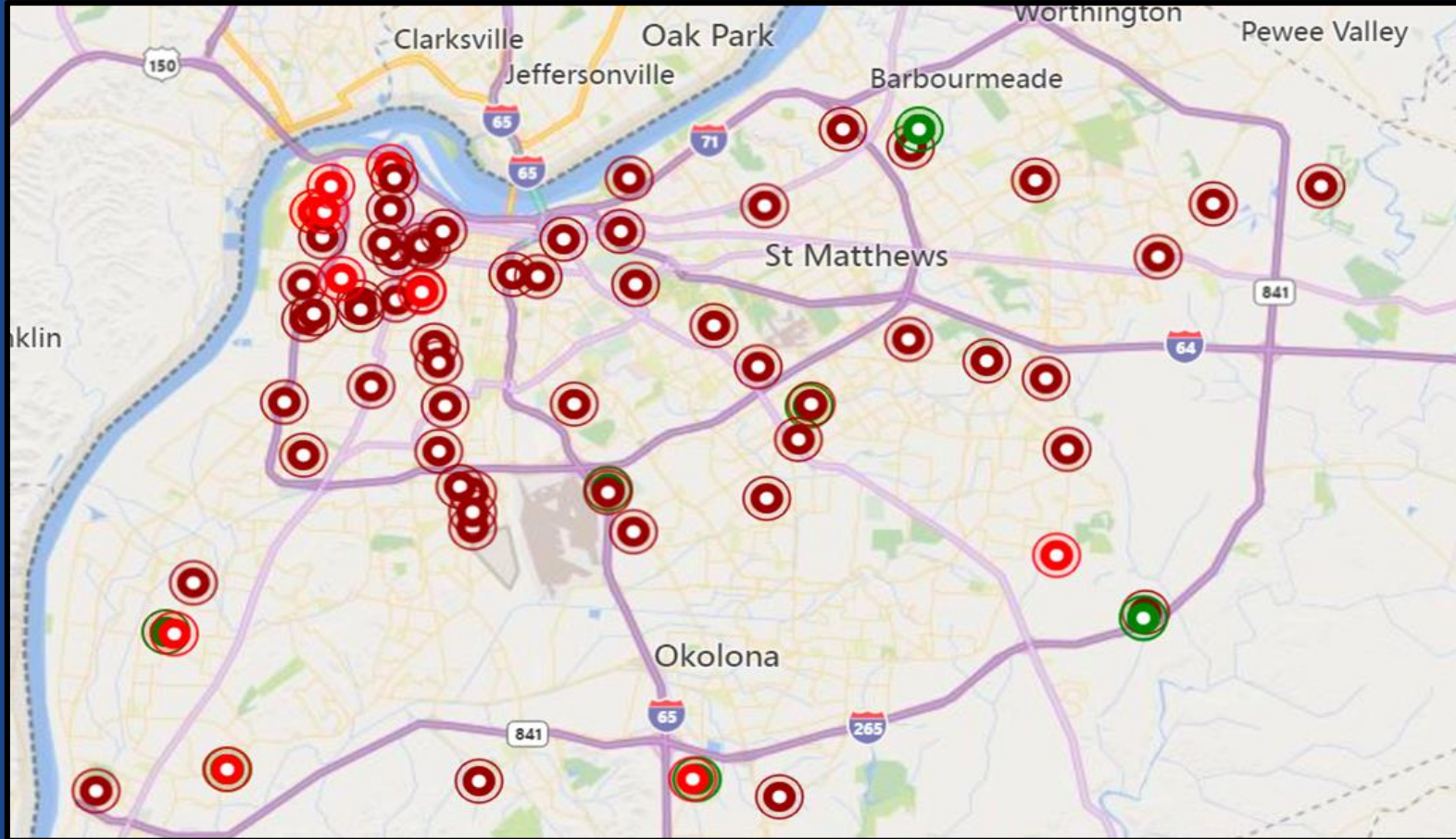
- Frost Stur
 - Sher
 - Bl
 - 57 Evolve 502 Sites
 - W
 - Wey
- Wilder & Kammerer
 - Greenwood & PRP
 - Goldsmith & Seneca

**7,296
STUDENTS
ENROLLED**

**847
EMPLOYEES**

Students are provided transportation and meals.

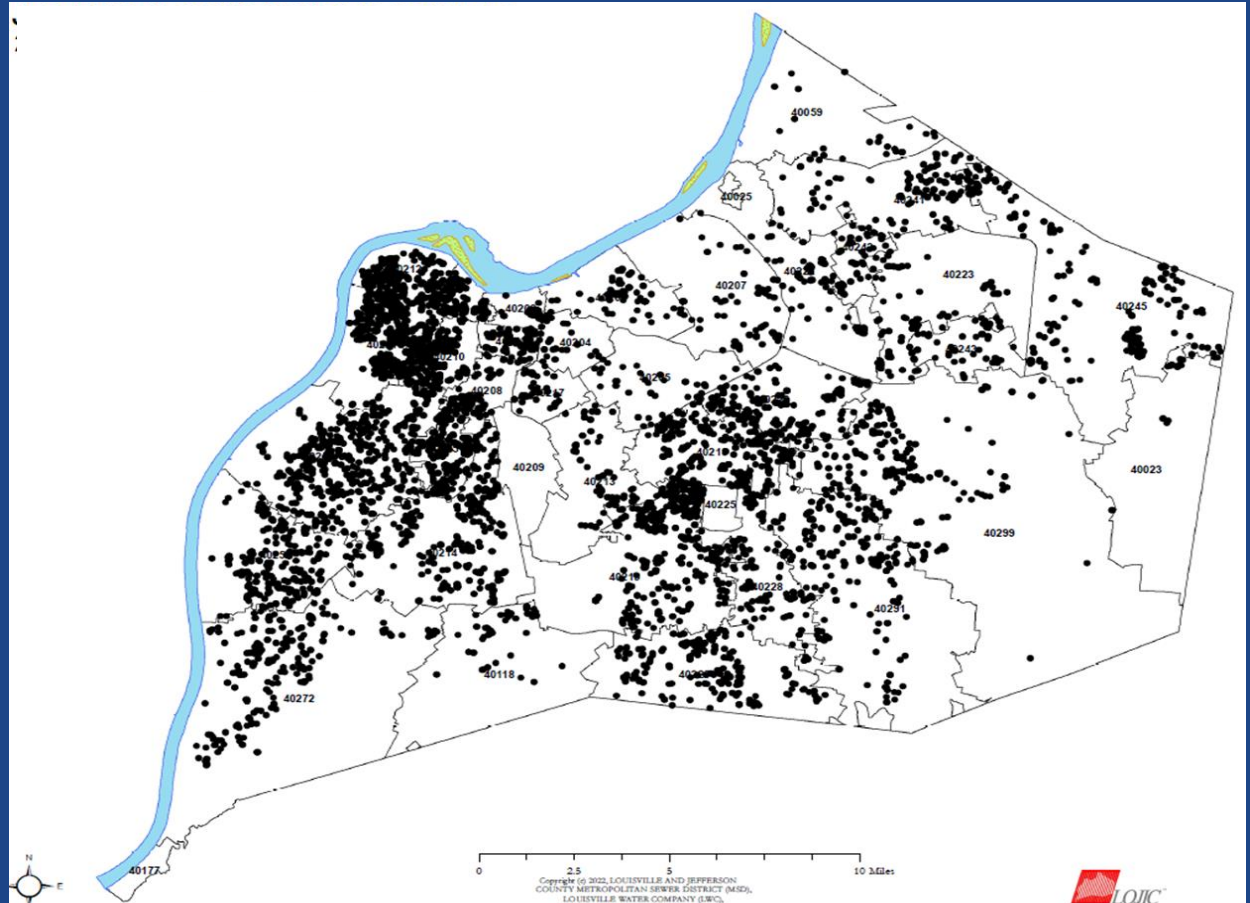
Sites and Locations–JCPS & Community



Registered Students

Student Demographics

African American	62%
White	17%
Hispanic/Latinx	9%
Other races	12%
FRL	80%
ECE	18%
ELL	13%



2022 BPL Schedule

Every student
receives
breakfast

THINK
LAW

	1st Grade	2nd Grade	3rd Grade	4th Grade	5th Grade	6th Grade	7th Grade	8th Grade	9th Grade	10th Grade	11th Grade	12th Grade
8:30-9:00	Arrival/ Breakfast	Arrival/ Breakfast	Arrival/ Breakfast	Arrival/ Breakfast	Arrival/ Breakfast	Arrival/ Breakfast	Arrival/ Breakfast	Arrival/ Breakfast	Arrival/ Breakfast	Arrival/ Breakfast	Arrival/ Breakfast	Arrival/ Breakfast
9:00-9:45	ThinkLaw	ThinkLaw	ThinkLaw	ThinkLaw	Enrichment	Robotify	ThinkLaw	ThinkLaw	Edmentum/ Study Island	CTE	Enrichment	Enrichment
9:45-10:30	ThinkLaw	ThinkLaw	ThinkLaw	ThinkLaw	ThinkLaw	Enrichment	ThinkLaw	ThinkLaw	CTE	Enrichment	Edmentum/ Study Island	Edmentum/ Study Island
10:30-11:15	Enrichment	Class Activities/ Teacher Choice	Class Activities/ Teacher Choice	Robotify	ThinkLaw	ThinkLaw	Class Activities/ Teacher Choice	Enrichment	ThinkLaw	ThinkLaw	ThinkLaw	ThinkLaw
11:15-12:00	Imagine Learning/ FEV	Enrichment	Imagine Learning/ FEV	Imagine Learning/ FEV	Class Activities/ Teacher Choice	ThinkLaw	Robotify	Imagine Learning/ Exact Path/FEV	Enrichment	Edmentum/ Study Island	CTE	CTE
12:00-12:30	Lunch 12:00-12:20	Lunch 12:00-12:20	Lunch 12:25-12:45	Lunch 12:25-12:45	Imagine Learning/ FEV 12:00-12:45	Imagine Learning/ FEV 12:00-12:45	Lunch 12:10-12:30	Lunch 12:10-12:30	Lunch 12:10-12:30	Class Activities/ Teacher Choice	FEV Tutor	FEV Tutor
12:30-1:15	Robotify	Imagine Learning/ FEV	Enrichment	Class Activities/ Teacher Choice 12:45-1:15	Lunch 12:50-1:10	Lunch 12:50-1:10	Enrichment	Robotify	Class Activities/ Teacher Choice	Lunch 12:40-1:00	Lunch 12:40-1:00	Lunch 12:40-1:00
1:15-2:00	Class Activities/ Teacher Choice	Robotify	Robotify	Enrichment	Robotify	Class Activities/ Teacher Choice	Imagine Learning/ Exact Path/FEV	Class Activities/ Teacher Choice	FEV Tutor	FEV Tutor	Class Activities/ Teacher Choice	Class Activities/ Teacher Choice

Teacher's
receive
planning period
during school
day

robotify

(N)EVER(S)TOP
LEARNING

Duty Free
Lunch

imagine
learning

ECE Summer Programs

CAMP VISION

Students will explore and discover strengths and interests in areas of the Expanded Core Curriculum (ECC) for Visually Impaired (e.g., Braille, Orientation & Mobility, Self-Determination, Career Education)

June 13- July 1; 9:00-2:00
Locations: Kammerer & CHP
Enrollment: 25

DEAF/HARD OF HEARING CAMP

Students will explore and discover strengths and interests in areas of the Expanded Core Curriculum (ECC) for Deaf/Hard of Hearing (e.g., Amplification & Environmental Amplification, Sign Language Development, Self-Determination & Advocacy)

June 15- July 15; 9:00-2:00
Location: Cochran
Enrollment: 46

CHURCHILL PARK SUMMER CAMP

CHP students will explore a modified curriculum and variety of enrichment activities to strengthen skills in the areas of Academics, Social/Emotional Development, Self-Determination & Advocacy.

June 15- July 15; 9:00-2:00
Enrollment: 51

BINET SUMMER CAMP

Binet students will explore a modified curriculum and variety of enrichment activities to strengthen skills in the areas of Academics, Social/Emotional Development, Self-Determination & Advocacy.

June 15- July 15; 7:30-11:00
Enrollment: 13

JCPS SUMMER BACKPACK LEAGUE

More than 1,200 ECE students enrolled

Lit &

"Literacy &" Programs connect standards-based literacy instruction to character-building opportunities using grade-level-appropriate books with themes connected to each program.

- June 21 - July 15, Monday - Friday
- 9:00 am - 2:00 pm
- 14 camps, Grades 3rd-5th
- 25 students per class
- Total 350
- 7 sites:
 - Shawnee, Goldsmith, Gheens, Wilder, Greenwood, Frost, Blue Lick
- Themes:
 - Swimming, robotics, soccer, tennis, DJ, photography, fitness, aquatics, drama, fencing, chess, dance, robotics, karate

Girls on the Rise

Girls on the R.I.S.E. (Revolutionizing Interpretations through Self-Expression) is an innovative literacy and art program designed to equip our young girls of color with the confidence, strength, and resilience to graduate prepared, empowered, and inspired to reach their full potential and contribute as thoughtful, responsible citizens of our diverse, shared world.

- Grades 6-8
- Camp location: Shawnee
- Number of students: 152

Homeless & Foster Camps

- June 6 – 23rd
- Americana- all summer
- Adelante- July 10- August 5

Both have an
exposition of
learning!

Grandmasters' Camp

- June 13 – 24th
- A program designed for principles and tactics on managing and maneuvering through life
- Critical conversations about race, society, feelings, and the future





110 Staff
Per
Camp

- Proven to significantly impact Kindergarten readiness
- 1,760 rising JCPS Kindergarteners
- Session A (June 13-24, 9 AM-2 PM) or Session B (July 11-22, 9 AM - 2 PM)
- Locations: Maupin, McFerran, Dawson Orman, Shacklette, Unseld, Tully, A. Kennedy, Westport
- All classes fully staffed, with a 7:1 child-adult ratio
- Superhero-themed curriculum targeting Kindergarten readiness skills with small group instruction
- Camp Ready4K Cultural Adventures Passport program in partnership with Fund for the Arts
- English language proficiency screening for potential EL students
- Take-Home Kit with mini library of 14 books, summer reading journal, learning materials, manipulatives, and choice boards
- Breakfast and lunch provided
- Transportation provided

CAMP JUMP START



- Focused on socio-emotional development which is especially critical due to the impact of the pandemic
- 120 three-year olds with special educational needs returning to JCPS Early Childhood for 2022-23
- Goal: To retain student growth made in 2021-22
- July 25-29, 9 AM-12 PM
- Locations: Dawson Orman, Unseld, Westport
- All classes fully staffed, with a 3:1 child-adult ratio
- Breakfast and lunch provided
- Transportation provided
- Take Home kits provided

55 Camp
Staff



ESL Summer Programs



KENTUCKY REFUGEE MINISTRIES (KRM) CAMP: KRM & Highland Presbyterian Church

- June 6 - July 14; 9:30 - 12:30 M/T/W & Thursday neighborhood day
- Enrollment: 63
- K-8: literacy, language and math learning
- 9-12 Teen Boost: English education, social engagement, and cultural studies
- Community activities and engagement for K-12
- Social-emotional learning
- Theme-based curriculum
- Breakfast and lunch provided

CATHOLIC CHARITIES CAMP: Presentation Academy

- June 6 - July 13; 9:00 - 2:30 M/T/W
- Enrollment: 54
- K-12: literacy, language and math learning
- Community activities and engagement for K-12
- Social-emotional learning
- Theme-based curriculum
- Breakfast and lunch provided



ESL Summer Programs



ESL High School Program: Virtual and in-person support@Newcomer Academy

- June 6 - July 14 virtual camp
- Enrollment: 57
- 9-12: ORR (Office of Refugee Resettlement) eligible students who are 18 and older and are in jeopardy of not graduating on time
- Courses include ESL 2 and/or English 3
- Tarc passes for students to access in-person support

Newcomer Academy Summer Camps: Newcomer Academy

- June 6 - June 17 & July 18 - July 29
- Enrollment: 60
- 6-12: Enrichment opportunities in literacy
- Breakfast and lunch provided

Backpack League: School and community sites

- More than 900 ESL students enrolled
- ESL support
- Breakfast and lunch provided

The logo for ELEV8 features the word "ELEV" in white, bold, sans-serif capital letters, followed by a large yellow "8" with a light blue horizontal bar at its base. The entire logo is set against an orange rectangular background.

STUDENT
LEARNING
CENTERS

- Focused on prioritizing academic success and creating strong ties among families, students, schools, and communities
- Location: 2500 West Broadway
- June 6-June 30 Monday-Friday 9:00 am-2 pm
- Up to 250 Kindergarten-Twelfth Grade students who did not meet MAP benchmark in Math and/or Reading, missed 10+ days, failed three or more core content areas (middle/high), reside in zip codes 40208, 40210, 40211, 40212,
- Transportation provided
- Breakfast and lunch provided



- Targeted Tutoring in math and literacy
- Hands on learning experiences
- Engaging instruction and enrichment
- Fund For The Arts Programming
- BrainStem Programming
- Social emotional learning
- Counseling
- College and career exploration
- 10:1 student-adult ratio



Questions and Feedback