

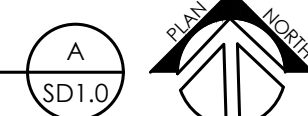
- ### GENERAL SITE NOTES
1. THE SITE PLANS WERE PREPARED BASED UPON TOPOGRAPHIC SURVEYS BY S&M 2020 LIBERTY ROAD SUITE 105 LEXINGTON KY 405105. REFER TO SITE SURVEY SHEETS.
  2. THE CONTRACTOR SHALL FIELD VERIFY ALL EXISTING SITE FEATURES AND CONDITIONS. REPORT ANY DISCREPANCIES TO THE ARCHITECT PRIOR TO THE START OF CONSTRUCTION.
  3. THE ARCHITECT AND ARCHITECT'S CONSULTANTS SHALL HAVE NO RESPONSIBILITY FOR THE DISCOVERY, PRESENCE, HANDLING, REMOVAL OR DISPOSAL OF, OR EXPOSURE OF PERSONS TO HAZARDOUS MATERIALS IN ANY FORM AT THE PROJECT SITE, INCLUDING BUT NOT LIMITED TO ASBESTOS, ASBESTOS PRODUCTS, POLYCHLORINATED BIPHENYL (PCB) OR OTHER TOXIC SUBSTANCES.
  4. THE CONTRACTOR SHALL USE EXTREME CARE IN WORKING AROUND EXISTING OVERHEAD AND UNDERGROUND UTILITIES. MEASURES SHOULD BE TAKEN TO PROTECT ALL UTILITIES FROM DAMAGE DURING CONSTRUCTION.
  5. SEE EROSION POLLUTION AND SEDIMENT CONTROL PLAN ON SD0.1 FOR RECOMMENDED BEST MANAGEMENT PRACTICES INFORMATION AND SEDIMENT CONTROLS.
  6. REFER TO CONSTRUCTION MANAGER'S PLANS AND SPECIFICATIONS FOR INFORMATION REGARDING CONSTRUCTION SCHEDULE/SEQUENCING, CONSTRUCTION FENCING/STAGING, AND LEED SPECIFIC REQUIREMENTS.

- ### SITE DEVELOPMENT TAGS
- 0 EXISTING TO REMAIN. PROTECT THROUGHOUT CONSTRUCTION.
    - (a) BUILDINGS TO REMAIN. NO UTILITIES TO THESE FACILITIES ARE TO BE REMOVED UNLESS NEW PERMANENT UTILITY IS PROVIDED PRIOR TO DEMOLITION.
    - (b) PAVEMENT TO REMAIN - PATCH/REPAIR WHERE DAMAGED BY CONSTRUCTION. SAW-CUT TO PROVIDE CLEAN EDGE. CONCRETE PAVING TO BE SAW-CUT BACK TO NEAREST UNDAUNAGED CONTROL OR ISOLATION JOINT. MATCH NEW ADJACENT PAVEMENT TO EXISTING PAVEMENT ELEVATIONS.
    - (c) TREE/VEGETATION TO REMAIN.
    - (d) FENCING TO REMAIN.
    - (e) WATER LINE, HYDRANT, VALVE, OR METER TO REMAIN.
    - (f) SANITARY LINE, MANHOLE, OR CLEAN OUT TO REMAIN.
    - (g) GAS LINE, VALVE, OR METER TO REMAIN.
    - (h) STORM LINE/STRUCTURE TO REMAIN.
    - (i) ELECTRIC LINE, POLE, OR METER TO REMAIN.
    - (j) COMMUNICATIONS LINE, POLE, OR SERVICE TO REMAIN.
    - (k) GEOTHERMAL UTILITY TO REMAIN.
    - (l) GRAVEL PAVEMENT TO REMAIN.
  - 1 ASPHALT PAVEMENT (321216)
    - (a) HEAVY DUTY ASPHALT PAVING. SEE DETAIL A/SD4.2
    - (b) ASPHALT PAVEMENT MILL & OVERLAY. SEE DETAIL A/SD4.2
  - 2 CONCRETE PAVEMENT (321313, 321373)
    - (a) 4" DEPTH CONCRETE PAVEMENT- SEE DETAIL B/SD4.2
    - (b) 4" CONCRETE PAVEMENT WITH PRECAST PAVER WITH INLAY. SEE DETAIL C/SD4.2
  - 3 CONCRETE CURB (321313, 321613, 321726)
    - (a) 6" WIDTH, 6" HEIGHT HEADER CURB. SEE DETAIL D/SD4.2
    - (b) 6" WIDTH FLUSH HEADER CURB. SEE DETAIL E/SD4.2
    - (c) CONCRETE CURB AND GUTTER. SEE DETAIL F/SD4.2
    - (d) ACCESSIBLE DROPPED CURB TYPE 'A' RAMP. SEE DETAILS G&H/SD4.2
    - (e) ACCESSIBLE DROPPED CURB TYPE 'B' RAMP. SEE DETAILS G&I/SD4.2
    - (f) ACCESSIBLE DROPPED CURB TYPE 'C' RAMP. SEE DETAILS G&J/SD4.2
  - 4 PERMEABLE CONCRETE PAVERS. (321413.19) SEE DETAIL K/SD4.2
  - 5 CONCRETE RETAINING WALL. SEE DETAIL L/SD4.2
  - 6 SEGMENTAL BLOCK RETAINING WALL. SEE DETAIL M/SD4.2
  - 7 PAINTED PAVEMENT MARKINGS. (321723.13)
    - (a) 4" PAVING STRIPING, WHITE. SEE DETAIL N/SD4.2
    - (b) ACCESSIBLE PARKING STRIPING. SEE DETAIL N/SD4.2
    - (c) 4" PAVING STRIPE, BLUE.
    - (d) PAINTED TRAFFIC STOP BAR, 12"X12", WHITE.
    - (e) 4" PAVING STRIPING, YELLOW.
    - (f) PAINTED CROSSWALK. SEE DETAIL O/SD4.2
    - (g) PAINTED TRAFFIC DIRECTIONAL ARROWS. SEE DETAIL P/SD4.2
  - 8 TRAFFIC SIGNAGE (SINGLE POST), (101453) SEE DETAIL Q/SD4.2
    - (a) STOP SIGN.
    - (b) ACCESSIBLE PARKING SIGN. SEE DETAIL R/SD4.2
    - (c) "ONE WAY DO NOT ENTER" SIGN. SEE DETAIL
    - (d) "VISITOR PARKING ONLY" SIGN. SEE DETAIL
    - (e) "STUDENT DROP OFF" WITH DIRECTIONAL ARROW.
  - 9 CONCRETE WHEEL STOP. (321713) SEE DETAIL S/SD4.2
  - 10 MASONRY SEAT WALL WITH LIMESTONE CAP. SEE DETAIL G/SD4.3
  - 11 ALT #1 - SITE FURNISHINGS AND PLAYGROUND EQUIPMENT (129363 & 116813)
    - (a) "PUP TENT" CLIMBER
    - (b) "PICNIC" BOLLIDER
    - (c) "SPOKANE" TIMBER STACK STRUCTURE
    - (d) PICNIC TABLE
  - 12 UTILITY STRUCTURE. SEE MEP DRAWINGS FOR ADDITIONAL INFORMATION.
  - 13 RECONSTRUCTED BUILDING MEMORIAL. SEE ARCHITECTURAL SHEET FOR MORE INFORMATION.
  - 14 GRANULAR RUBBER PLAYGROUND SURFACING. SEE DETAIL H/SD4.3
  - 15 ALT #2 - CONCRETE AMPHITHEATER RISERS. SEE DETAIL A & B/SD4.3
  - 16 CONCRETE STAIR SEE DETAIL E & F/SD4.3

### LEGEND

	CONCRETE PAVEMENT
	ASPHALT PAVEMENT OVERLAY
	HEAVY DUTY ASPHALT PAVEMENT
	GRANULAR RUBBER SURFACING

OVERALL SITE DEVELOPMENT AND LAYOUT PLAN  
SCALE: 1"=30'



OVERALL SITE DEVELOPMENT AND LAYOUT PLAN  
ESTILL SPRINGS ELEMENTARY ARP ESSER RENOVATION & ADDITION - PHASE 1  
FOR:  
ESTILL COUNTY BOARD OF EDUCATION  
IRVINE, KENTUCKY

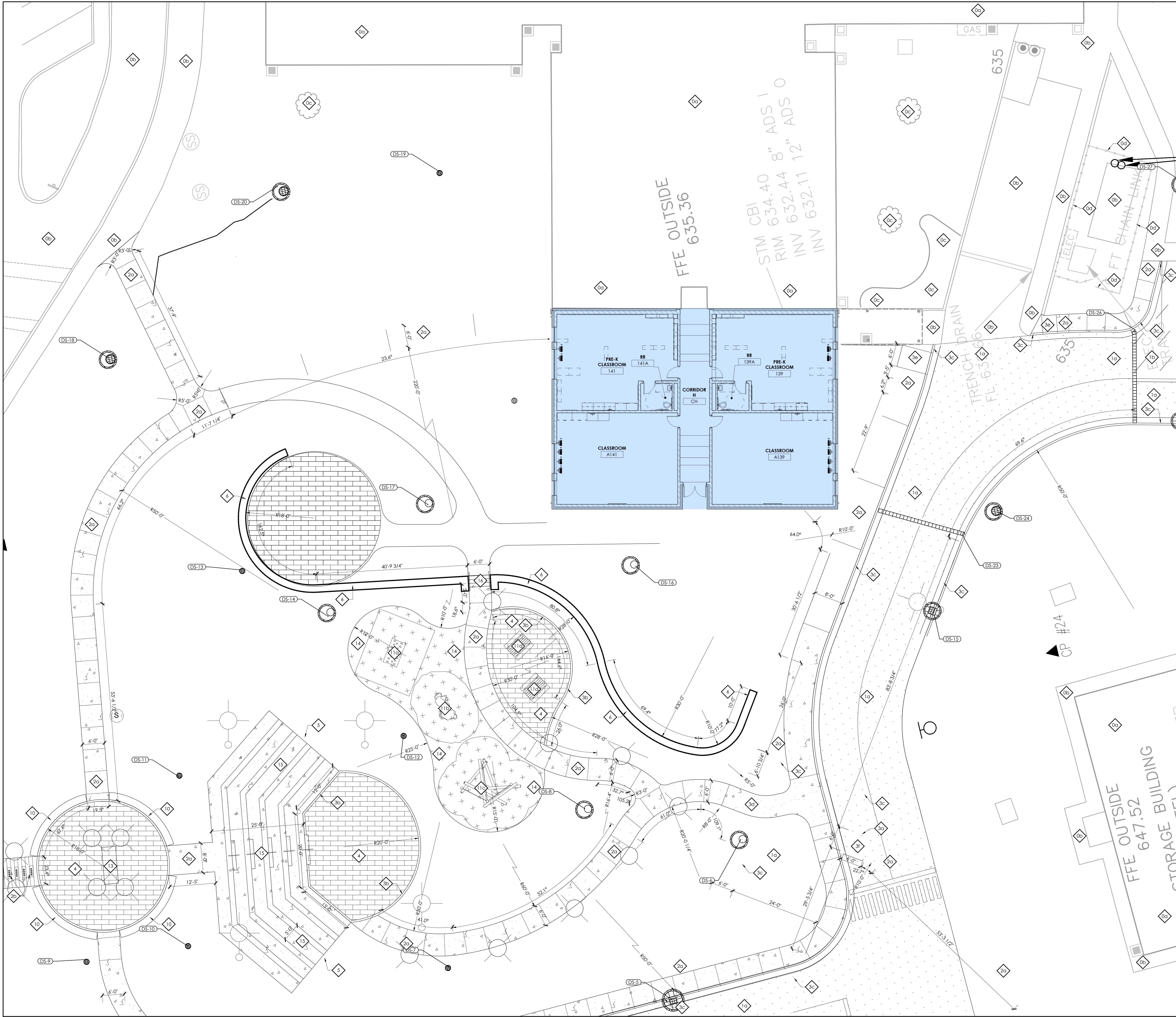
M.E. & P. Engineer:  
Staggs & Fisher  
3264 Lochness Dr.  
Lexington, KY 40517  
p 859.271.3246  
Structural Engineer:  
Structural Design Group, Inc.  
220 Great Circle Rd., Suite 106  
Nashville, TN 37228  
p 615.255.5537

BC# 22-207  
Project No: 2148  
Drawn By: JK8/ELM  
Rev'd By: MBM

SHEET RELEASE	
1	
2	
3	
4	
5	
6	
7	
8	

COPYRIGHT © 2022  
CONSTRUCTION DOCUMENTS  
SD1.0  
OVERALL SITE DEVELOPMENT AND LAYOUT PLAN  
DATE ISSUED: 03/22/2022





ENLARGED SITE DEVELOPMENT AND LAYOUT PLAN  
SCALE: 1"=10'

## GENERAL SITE NOTES

1. THE SITE PLANS WERE PREPARED BASED UPON TOPOGRAPHIC SURVEYS BY SAME 2020 LIBERTY ROAD SUITE 105 LEXINGTON KY 405105. REFER TO SITE SURVEY SHEETS.
2. THE CONTRACTOR SHALL FIELD VERIFY ALL EXISTING SITE FEATURES AND CONDITIONS. REPORT ANY DISCREPANCIES TO THE ARCHITECT PRIOR TO THE START OF CONSTRUCTION.
3. THE ARCHITECT AND ARCHITECTS CONSULTANTS SHALL HAVE NO RESPONSIBILITY FOR THE DISCOVERY, PRESENCE, HANDLING, REMOVAL OR DISPOSAL OF, OR EXPOSURE OF PERSONS TO HAZARDOUS MATERIALS IN ANY FORM AT THE PROJECT SITE, INCLUDING BUT NOT LIMITED TO ASBESTOS, ASBESTOS PRODUCTS, POLYCHLORINATED BIPHENYL (PCB) OR OTHER TOXIC SUBSTANCES.
4. THE CONTRACTOR SHALL USE EXTREME CARE IN WORKING AROUND EXISTING OVERHEAD AND UNDERGROUND UTILITIES. MEASURES SHOULD BE TAKEN TO PROTECT ALL UTILITIES FROM DAMAGE DURING CONSTRUCTION.
5. SEE EROSION POLLUTION AND SEDIMENT CONTROL PLAN ON SD0.1 FOR RECOMMENDED BEST MANAGEMENT PRACTICES INFORMATION AND SEDIMENT CONTROLS.
6. REFER TO CONSTRUCTION MANAGER'S PLANS AND SPECIFICATIONS FOR INFORMATION REGARDING CONSTRUCTION SCHEDULE SEQUENCING, CONSTRUCTION FENCING/STAGING, AND LEED SPECIFIC REQUIREMENTS.

## SITE DEVELOPMENT TAGS

- 0 EXISTING TO REMAIN. PROTECT THROUGHOUT CONSTRUCTION.
  - (a) BUILDING TO REMAIN. NO UTILITIES TO THESE FACILITIES ARE TO BE REMOVED UNLESS NEW PERMANENT UTILITY IS PROVIDED PRIOR TO DEMOLITION.
  - (b) PAVEMENT TO REMAIN - PATCH/REPAIR WHERE DAMAGED BY CONSTRUCTION. SAW-CUT TO PROVIDE CLEAN EDGE. CONCRETE PAVING TO BE SAW-CUT BACK TO NEAREST UNDAAMAGED CONTROL OR ISOLATION JOINT. MATCH NEW ADJACENT PAVEMENT TO EXISTING PAVEMENT ELEVATIONS.
  - (c) TREE/VEGETATION TO REMAIN.
  - (d) FENCING TO REMAIN.
  - (e) WATER LINE, HYDRANT, VALVE, OR METER TO REMAIN.
  - (f) SANITARY LINE, MANHOLE, OR CLEAN OUT TO REMAIN.
  - (g) GAS LINE, VALVE, OR METER TO REMAIN.
  - (h) STORM LINE/STRUCTURE TO REMAIN.
  - (i) ELECTRIC LINE, POLE, OR METER TO REMAIN.
  - (j) COMMUNICATIONS LINE, POLE, OR SERVICE TO REMAIN.
  - (k) GEOTHERMAL UTILITY TO REMAIN.
  - (l) GRAVEL PAVEMENT TO REMAIN.
- 1 ASPHALT PAVEMENT (321214)
  - (a) HEAVY DUTY ASPHALT PAVING. SEE DETAIL A/SD4.2
  - (b) ASPHALT PAVEMENT MILL & OVERLAY. SEE DETAIL A/SD4.2
- 2 CONCRETE PAVEMENT (321313, 321373)
  - (a) 4" DEPTH CONCRETE PAVEMENT-SEE DETAIL, B/SD4.2
  - (b) 4" CONCRETE PAVEMENT WITH PRECAST PAVER WITH INLAY. SEE DETAIL C/SD4.2
- 3 CONCRETE CURB (321313, 321413, 321724)
  - (a) 6" WIDTH, 6" HEIGHT HEADER CURB. SEE DETAIL D/SD4.2
  - (b) 6" WIDTH FLUSH HEADER CURB. SEE DETAIL E/SD4.2
  - (c) CONCRETE CURB AND GUTTER. SEE DETAIL F/SD4.2
  - (d) ACCESSIBLE DROPPED CURB TYPE 'A' RAMP. SEE DETAILS G&H/SD4.2
  - (e) ACCESSIBLE DROPPED CURB TYPE 'B' RAMP. SEE DETAILS G&H/SD4.2
  - (f) ACCESSIBLE DROPPED CURB TYPE 'C' RAMP. SEE DETAILS G&H/SD4.2
- 4 PERMEABLE CONCRETE PAVERS. (321413.19) SEE DETAIL K/SD4.2
- 5 CONCRETE RETAINING WALL. SEE DETAIL L/SD4.2
- 6 SEGMENTAL BLOCK RETAINING WALL. SEE DETAIL M/SD4.2
- 7 PAINTED PAVEMENT MARKINGS. (321723.13)
  - (a) 4" PAVING STRIPING, WHITE. SEE DETAIL N/SD4.2
  - (b) ACCESSIBLE PARKING STRIPING. SEE DETAIL N/SD4.2
  - (c) 4" PAVING STRIPING, BLUE. SEE DETAIL O/SD4.2
  - (d) PAINTED TRAFFIC STOP BAR, 12"x12", WHITE. SEE DETAIL P/SD4.2
  - (e) 4" PAVING STRIPING, YELLOW.
  - (f) PAINTED CROSSWALK. SEE DETAIL O/SD4.2
  - (g) PAINTED TRAFFIC DIRECTIONAL ARROWS. SEE DETAIL P/SD4.2
- 8 TRAFFIC SIGNAGE (SINGLE POST). (101453) SEE DETAIL Q/SD4.2
  - (a) STOP SIGN.
  - (b) ACCESSIBLE PARKING SIGN. SEE DETAIL R/SD4.2
  - (c) "ONE WAY DO NOT ENTER" SIGN. SEE DETAIL S/SD4.2
  - (d) "VISITOR PARKING ONLY" SIGN. SEE DETAIL T/SD4.2
  - (e) "STUDENT DROP OFF WITH DIRECTIONAL ARROW." SEE DETAIL U/SD4.2
- 9 CONCRETE WHEEL STOP. (321713) SEE DETAIL S/SD4.2
- 10 MASONRY SEAT WALL WITH LIMESTONE CAP. SEE DETAIL G/SD4.3
- 11 ALT #1 - SITE FURNISHINGS AND PLAYGROUND EQUIPMENT (129363 & 116813)
  - (a) "PUP TENT" CLIMBER
  - (b) "PICNIC" BOULDER
  - (c) "SPOKANE" TIMBER STACK STRUCTURE
  - (d) PICNIC TABLE
- 12 UTILITY STRUCTURE. SEE MEP DRAWINGS FOR ADDITIONAL INFORMATION.
- 13 RECONSTRUCTED BUILDING MEMORIAL. SEE ARCHITECTURAL SHEET FOR MORE INFORMATION.
- 14 GRANULAR RUBBER PLAYGROUND SURFACING. SEE DETAIL H/SD4.3
- 15 ALT #2 - CONCRETE AMPHITHEATER RISERS. SEE DETAIL A & B/SD4.3
- 16 CONCRETE STAIR SEE DETAIL E & F/SD4.3

## LEGEND

- CONCRETE PAVEMENT
- ASPHALT PAVEMENT OVERLAY
- HEAVY DUTY ASPHALT PAVEMENT
- GRANULAR RUBBER SURFACING

ENLARGED SITE PLANS  
ESTILL SPRINGS ELEMENTARY ARP ESSER RENOVATION & ADDITION - PHASE 1  
FOR:  
ESTILL COUNTY BOARD OF EDUCATION  
IRVINE, KENTUCKY

M.E.P. Engineer:  
Staggs & Fisher  
3244 Lochness Dr.  
Lexington, KY 40517  
p 859.271.3246  
Structural Engineer:  
Structural Design Group, Inc.  
220 Great Circle Rd., Suite 106  
Nashville, TN 37228  
p 615.295.5537

BG# 22-207  
Project No: 2148  
Drawn By: JRB/ELM  
Rev'd By: MBM

SHEET RELEASE	
1	
2	
3	
4	
5	
6	
7	
8	

COPYRIGHT © 2022  
CONSTRUCTION DOCUMENTS  
SD3.1  
ENLARGED SITE PLANS  
DATE ISSUED:  
03/22/2022

rosrarrant  
architects  
101 oldcayette avenue lexington, kentucky 40502 p 859.254.4018