

JCPS School Choice Recommendations

Moving forward with equity



“The best way to predict the future is to create it.”

Future State Vision

Foster a transparent, trustworthy system of resourced magnets serving diverse student populations

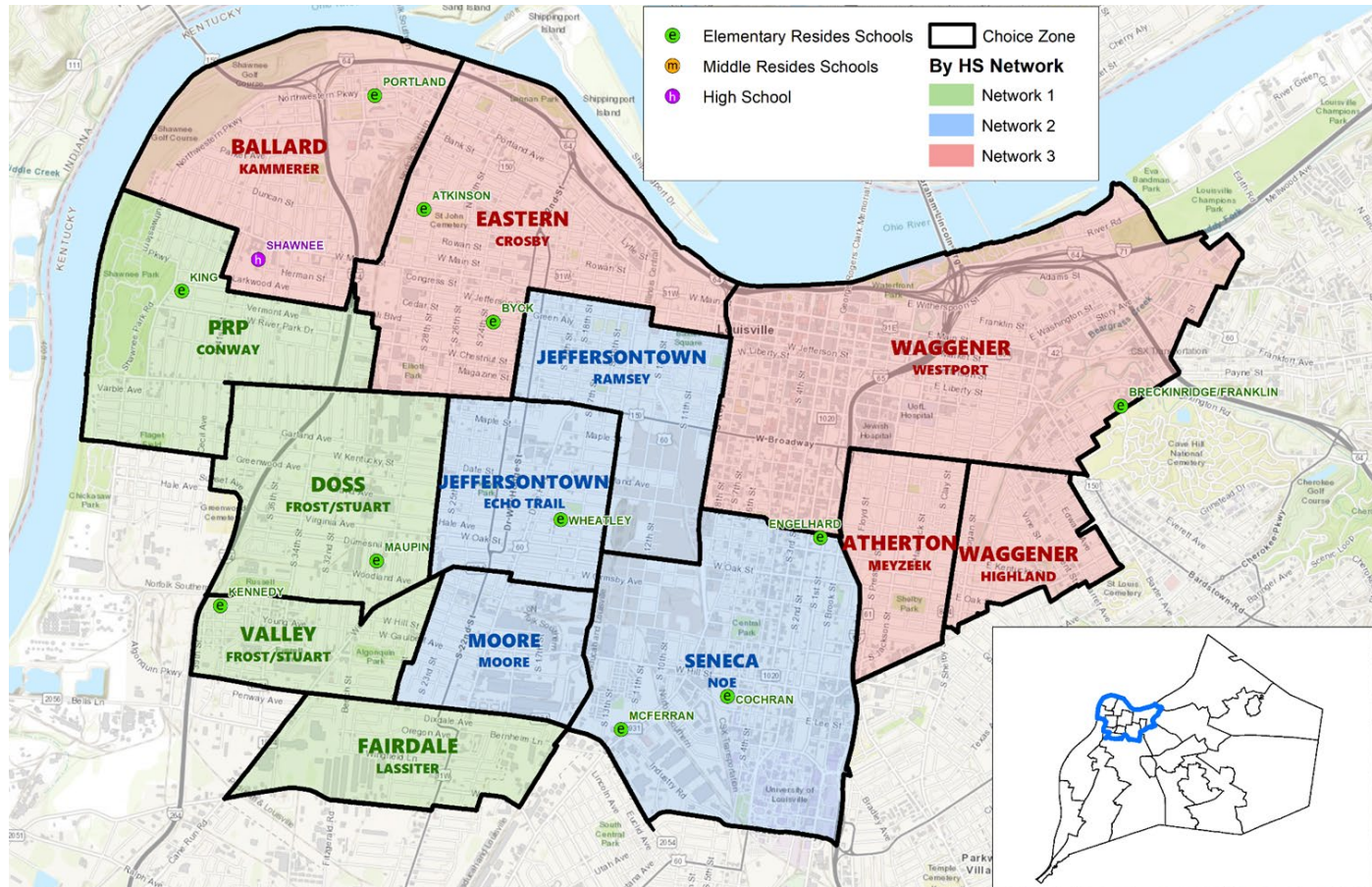
Provide Black and Brown students with a choice to attend thriving, diverse schools close to home with strong programs

Improve experience for all students and families leading with equity in mind and building stronger trust

Dual Resides and Feeder Patterns

Choice Zone Schools

EQUITY • Access • Ease of Understanding • Diversity • Choice



The Academy @ Shawnee

New West End Middle

Network 1

Maupin Elementary

Kennedy Elementary

King Elementary

Network 2

Cochran Elementary

Engelhard Elementary

McFerran Elementary

Wheatley Elementary

Network 3

Atkinson Elementary

Breckinridge/Franklin Elementary

Byck Elementary

Portland Elementary

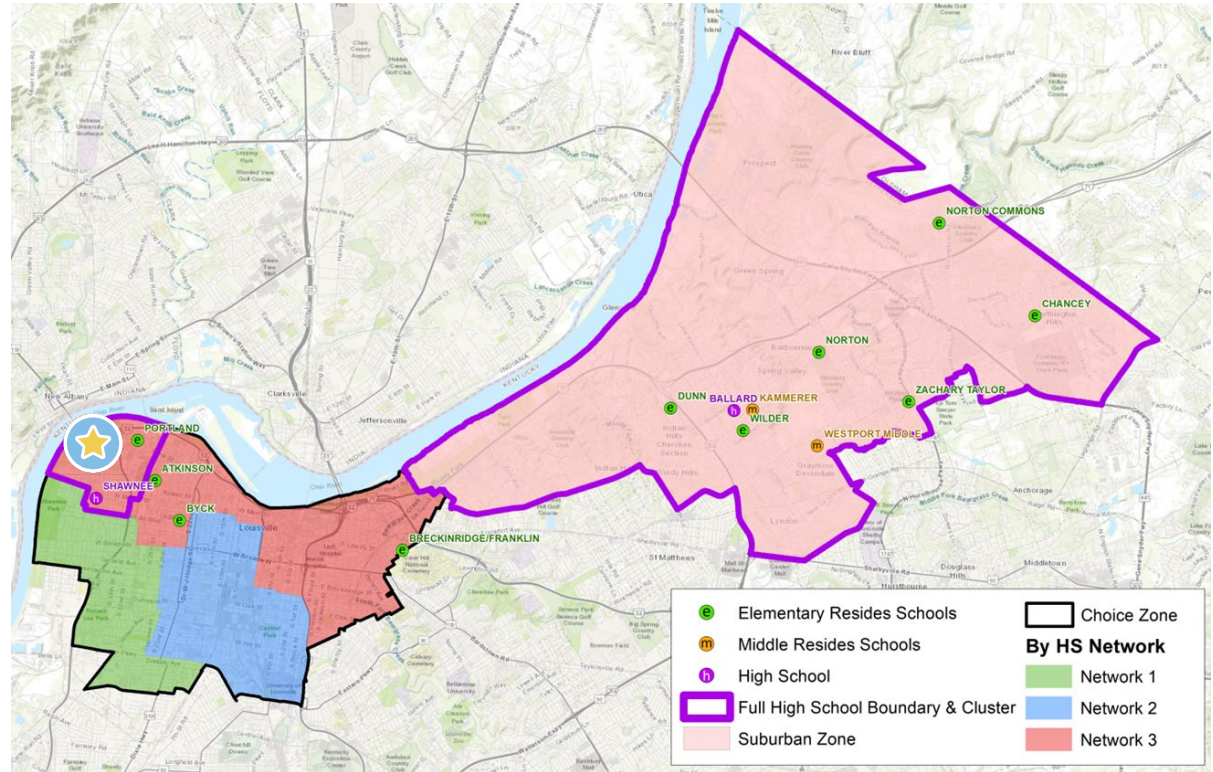
Choice Zone: Example

EQUITY • Access • Ease of Understanding • Diversity • Choice

STUDENT A



Level	Close to Home	Away from Home
Elementary**	Portland Atkinson Breck- Frank Byck	Chancey Dunn Norton Commons Norton Wilder Zachary Taylor
Middle^	New West Louisville Middle	Kammerer
High^	Academy @ Shawnee	Ballard



*Close to Home Elementary options are based on High School Network; Student A can choose any Network 3 elementary school within the choice zone (in addition to the Ballard Cluster).

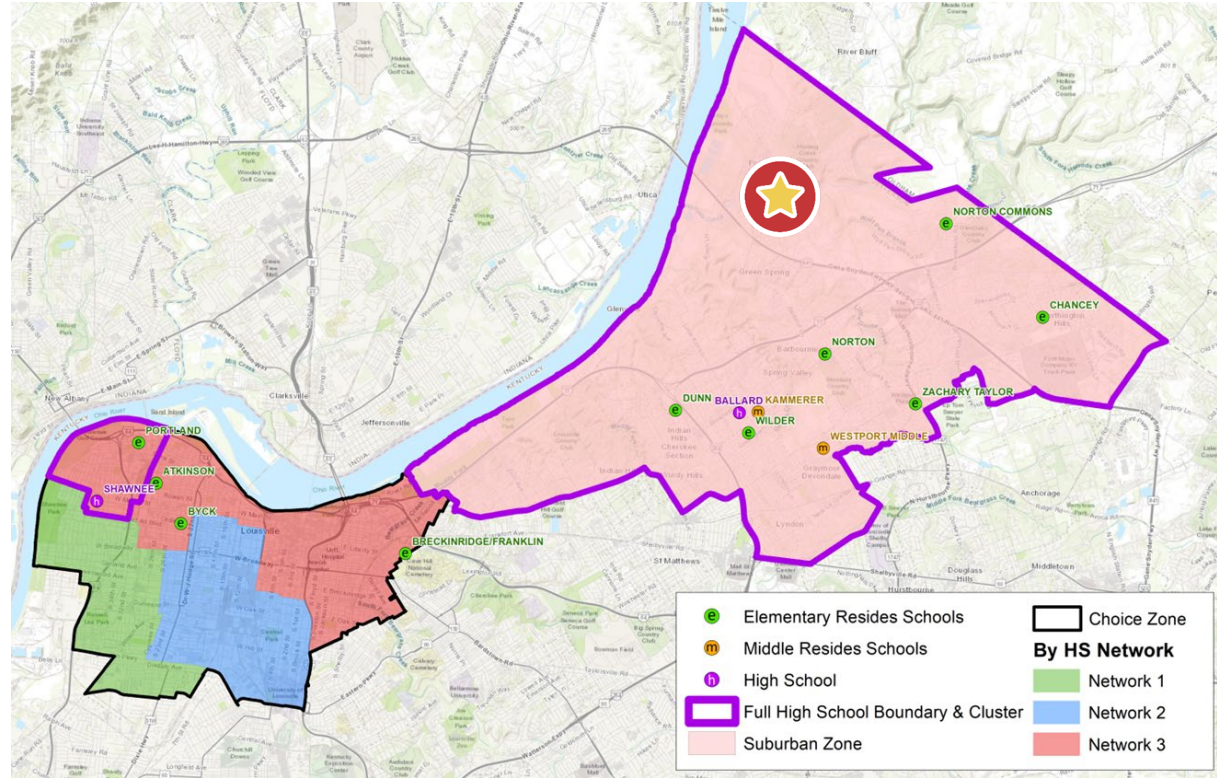
^All students may apply for magnets, transfers, and network schools

Choice Zone: Example

EQUITY • Access • Ease of Understanding • Diversity • Choice

STUDENT B

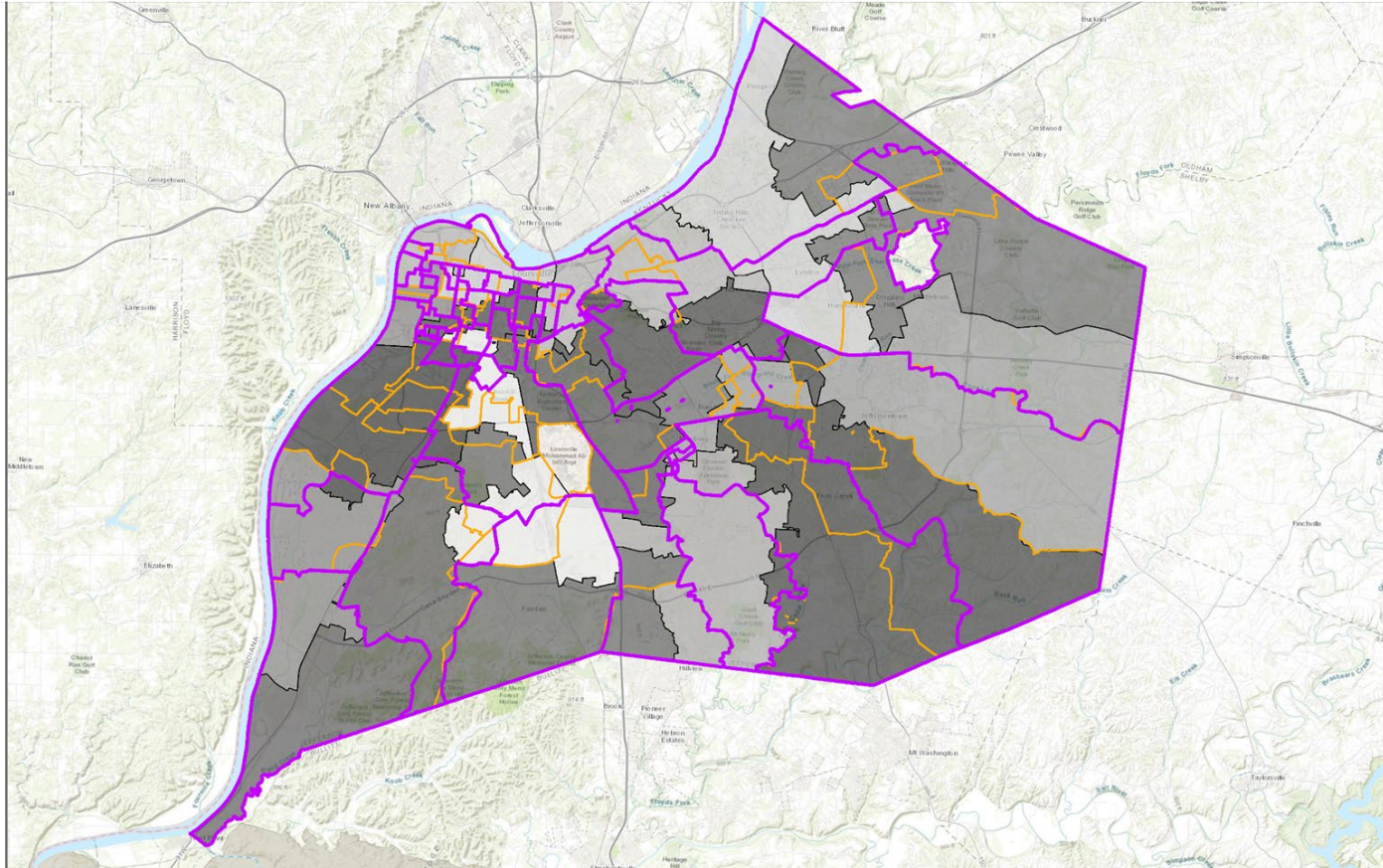
Level	Close to Home	Away from Home
Elementary	Chancey Dunn Norton Commons Norton Wilder Zachary Taylor	Portland
Middle	Kammerer	*Students may apply for magnets/transfers
High	Ballard	*Students may apply for magnets/transfers/network



Consistency

Continuity

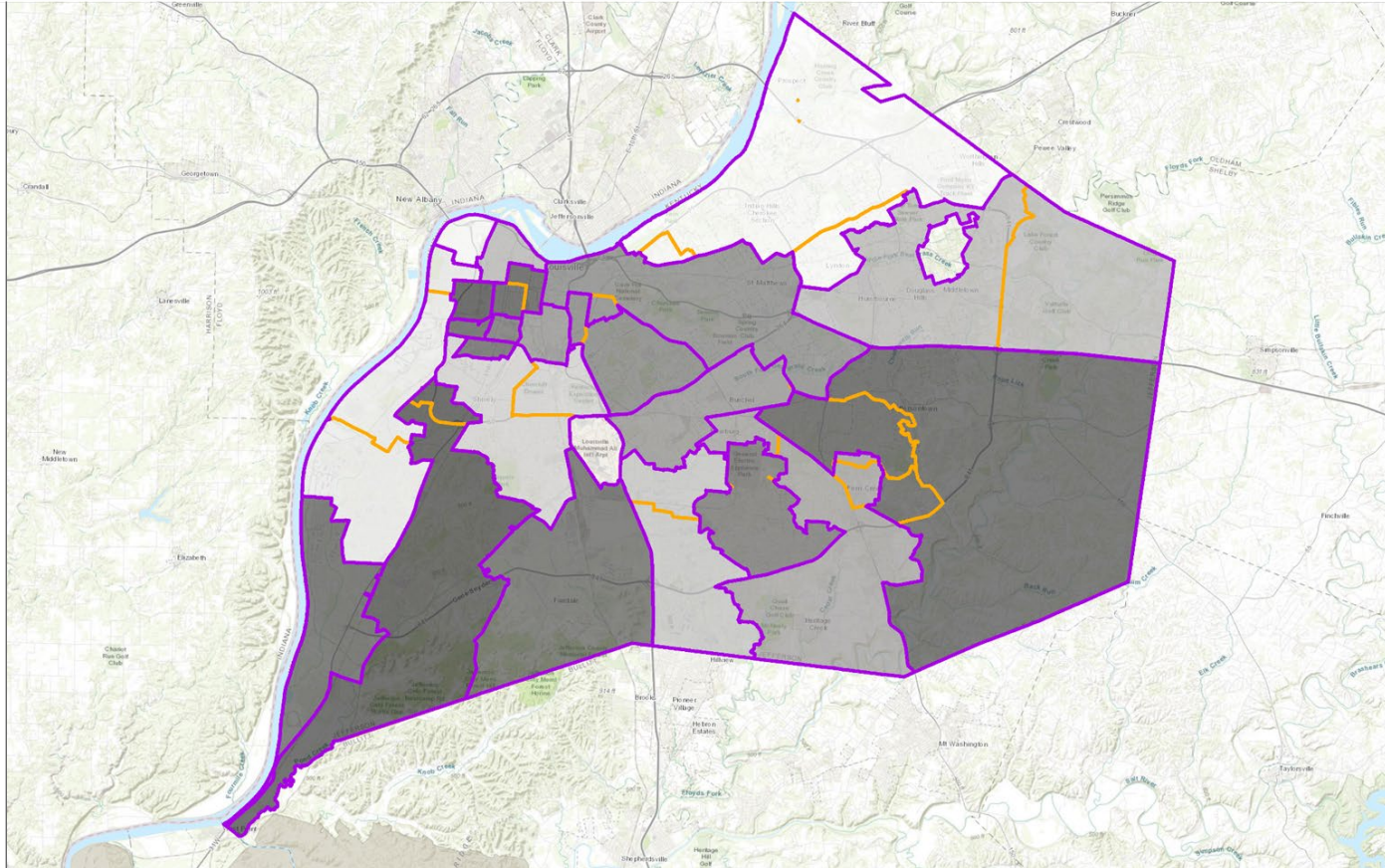
Choice



Consistency

Continuity

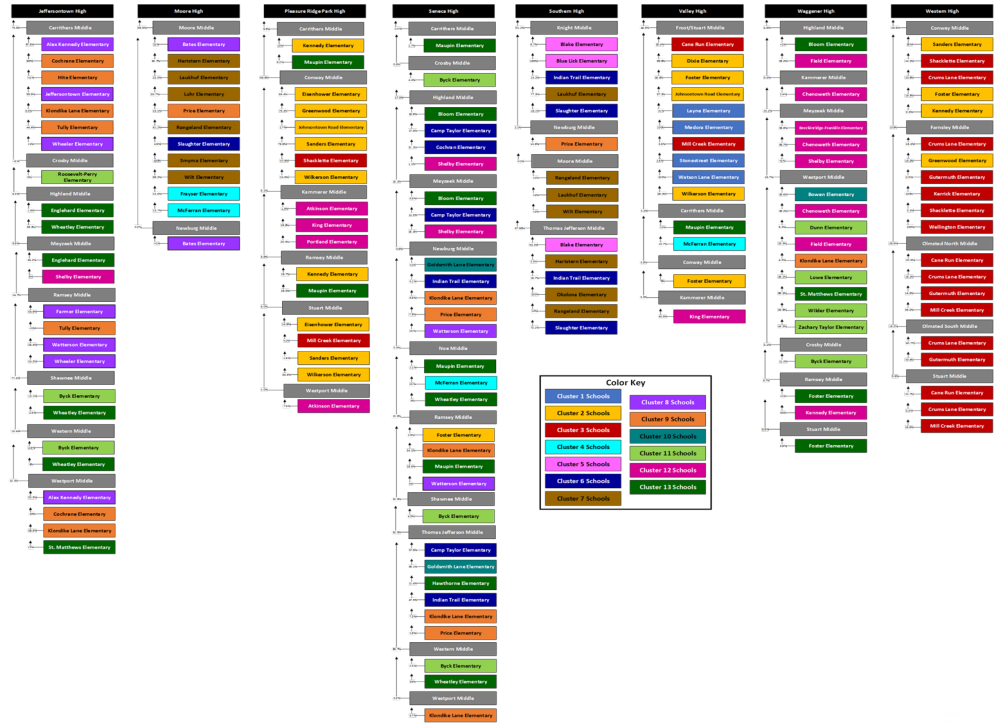
Choice



Current State:

Feeder Patterns

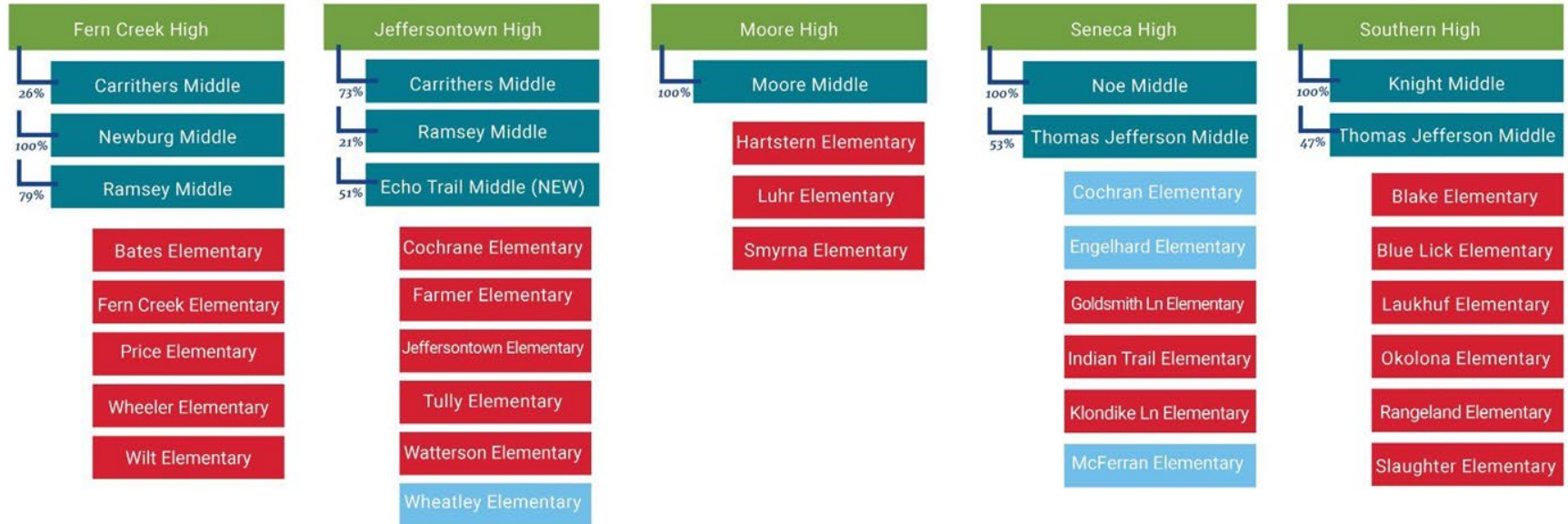
EQUITY • Access • Ease of Understanding • Diversity • Choice



Benefits: *Feeder Patterns*

EQUITY • Access • Ease of Understanding • Diversity • Choice

Network 2



Choice Zone
Elementary
Options

Cochran Elementary

Engelhard Elementary

McFerran Elementary

Wheatley Elementary

Remember our *WHY*

EQUITY • Access • *Ease of Understanding* • Diversity • Choice

Consistency

ALL students get a school choice that is **close to home**

Continuity

Improved feeder patterns & **predictability** for families

Choice

Students in Choice Zone have **additional choice**

Improved Sense of Belonging Leads to Positive Student Outcomes

Choice Zone Support

Choice Zone Support Plan

High School-2.5 Million
Middle School-2.5 Million
Elementary School-7 Million

New Investment- 12 million

Academic Supports

- Extended Learning (After School and Summer)
- Expansion of Career Pathways and Connection Pathways
- Meaningful and Relevant Curriculum
- College Courses offered at the High School
- Magnet Program enhancements and enrichment activities

Non-Academic Supports

- More Counselors and Mental Health Practitioners
- More Athletic and Extracurricular activities

Teacher & Administrative Supports

- Increased pay: Teachers, Administrators, & Instructional staff
- Project Manager
- Additional Instructional Staff
- Additional Professional Development Opportunities

Additional Investments

- Small Class Size (*based on new allocation formula*)
- 1:1 Technology Devices
- Facility construction/renovations

Choice Zone Continuous Improvement: *Monitoring & Accountability*

EQUITY • Access • Ease of Understanding • Diversity • Choice

Formative Evaluation Process

- A **project manager** serves as liaison between schools, central office, and community
- The project manager ensures that **critical timelines** are met; **eliminates barriers**; **convenes stakeholder groups** to review progress and gather feedback.
- This process allows for **reflection** of what has worked well, challenges encountered, and adjustments that need to be made to maximize student outcomes

Summative Evaluation Process

- Serves as a **formal evaluation** of the plan by both internal staff and an external entity.
- Each year, JCPS will **publicly report** to the Jefferson County Board of Education on key implementation and outcome metrics.
- Each year, JCPS will contract with an **external agency** to conduct an outside evaluation of the support plan and produce a public report.
- This process will provide **accountability** to ensure that the plan is implemented with fidelity.



Magnet Strategy

Magnetic Strategic Plan *Highlights*

EQUITY • Access • Ease of Understanding • Diversity • Choice

Systems Improvement

- Clarify magnet **purpose** for the District
- Implement JCPS Magnet Program Standards
- Review **non-magnetic** magnets
- Move identified magnet themes to **whole-school** model
- Dedicate **resources** and **support**
- Implement **new magnet redesign** process

Equity

- Create **Diversity Targets** and Goals
- Remove school initiated **exits**
- **Centralized lottery** for schools that use a lottery
- Align **mirror** themes

Access

- Replicate **popular magnets**, create new interest based magnets
- Develop new Technology Platform and **Outreach Plan**
- Review and adjust **magnet boundaries**
- Create K-12 **continuation pathways** for themes

Implementation Timeline

EQUITY • Access • Ease of Understanding • Diversity • Choice

The following will be implemented in the 2023-2024 school year

- The proposed dual resides and aligned feeder patterns
- Phase 1 of the magnet recommendations
 - Whole school magnets at Hawthorne, Coleridge-Taylor, Foster, Western MS, Academy@Shawnee MS, Western HS
- Three new elementary schools and two middle schools will open
- Dual resides starts with kindergarten, 6th and 9th graders, all other students can remain at their current school

Changes will be considered based on the findings from the annual summative evaluation process. A comprehensive review of the school choice plan will be implemented every 10 years, aligned with the new census data.



Moving the work forward





School Choice Proposal
Website



Virtual and In-Person
Informational Sessions



Online Survey & Community
Feedback Form



Board Community Forum

Improved Sense of Belonging Leads to Positive Student Outcomes

The time is NOW!

To reach our future state, we are committed to:

- Increasing choice for students in the Choice Zone who previously did not have choice
- Aligning Feeder Patterns for elementary, middle, and high school students
- Implementing a comprehensive magnet strategy that aligns with MSA and provides equitable access for Black and Brown students that leads to positive student outcomes

**Please share
your thoughts here**

Feedback