

# JCPS School Choice Proposal

Moving Forward with Equity: Dual Resides, Feeder Patterns,  
Choice Zone Support Plan

Jefferson County Board of Education  
April 12, 2022



# EQUITY

*Access*

*Ease of  
Understanding*

*Diversity*

*Choice*

## School Choice Guiding Principles

---

The current Student Assignment plan has not undergone a comprehensive review in almost **40 years**. Historically, the plan has advantaged White affluent families with greater financial and social capital.

JCPS is committed to **co-creating a plan** with our community that ensures that all students have **equitable access** to school choice options within JCPS.

# Current State:

## *Racial Equity*

EQUITY • Access • Ease of Understanding • Diversity • Choice

## Black and Brown students are...

- More likely to attend a **Title I** school
- More likely to attend an **under-enrolled** school
- More likely to attend a school **further from home** due to assignment
- More likely to attend a **non-magnet** school
- More likely to have a **lower sense of belonging**



# Sense of Belonging: *Research*

## Students with a strong sense of belonging:

- Have **fewer** behavior problems
- Are **more open** to critical feedback
- Take **greater advantage** of learning opportunities
- **Build** important relationships
- Have **more positive attitudes** about their classwork and teachers
- Are **more likely to persevere in the face of difficulty** and do better in school
- Are **more likely to graduate** from high school
- Are **more likely to develop skills and knowledge to succeed** in professional and civic lives



In sum, “When students experience a sense of belonging in a learning environment, we see both immediate and long-term positive consequences for their academic performance and well-being.”

– Healey & Stroman, 2021

# Current State: *Racial Equity*

EQUITY • Access • Ease of Understanding • Diversity • Choice

## Current System:

- No Choice
- Small disconnected zones
- 90 feeder patterns

## Choice Zone Outcomes:

- 1 in 2 high school students are chronically absent
- Proficiency rates aren't above 30% for middle or high school students
- Lower sense of belonging among African American students

*Student experience and outcomes don't support continuing with current state*

“The best way to predict the future is to create it.”

## Future State Vision

---

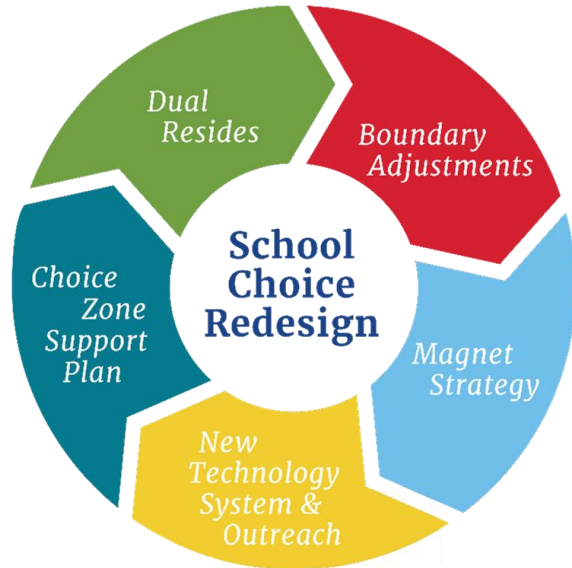
Foster a transparent, trustworthy system of resourced magnets serving diverse student populations

Provide Black and Brown students with a choice to attend thriving, diverse schools close to home with strong programs

Improve experience for all students and families leading with equity in mind and building stronger trust



# How We Get There...



## Dual Resides

- True Choice for families in the Choice Zone
- Alignment of Feeders

## Choice Zone Support Plan

- Staffing, Resources, Funding
- Supporting High Poverty Schools
- Continuous Improvement: Review Process

## New Technology System and Outreach

- SchoolMint Implementation
- Outreach Plan with Targeted Communications
- Clear, Easy to Understand Platforms

## Boundary Adjustments

- Feeder Patterns
- Predictability
- Optimizing for Building Capacity and Programming
- Maintain choice for families not in Choice Zone

## Magnet Strategy

- Magnet Strategic Plan aligned with MSA national standards
- Magnetic Magnets
- Support Structure for Strong Magnets
- Remove School Initiated Exits
- Centralized Lottery
- New, Engaging Magnets (Mirror and Interest-Based)
- Diversity Targets and Goals

# Dual Resides and Feeder Patterns

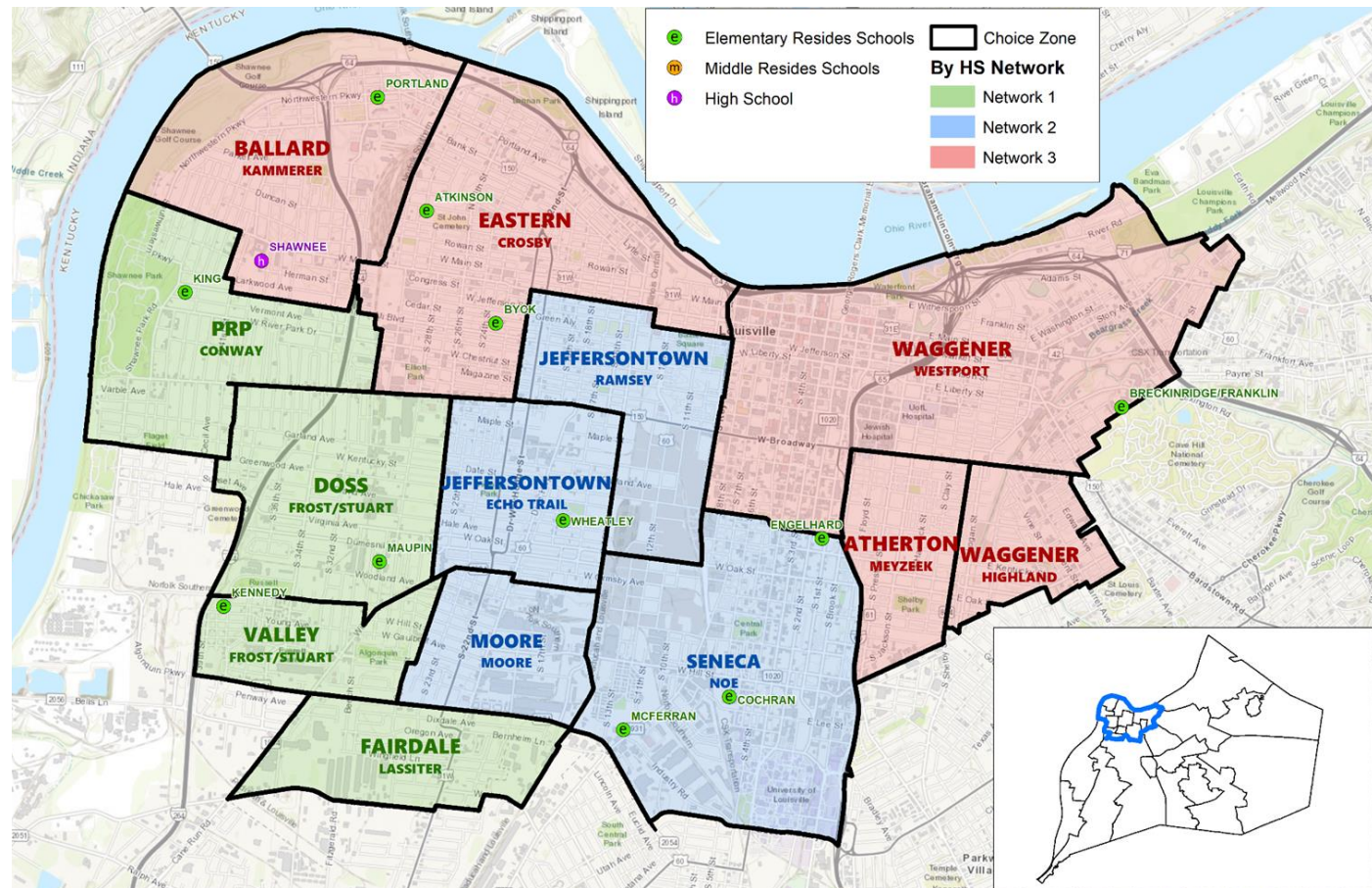
# Benefits

This proposal will lead to improved student experiences and outcomes:

- Students in the Choice Zone will have **two school options**
- Opportunities to **stay with peers** throughout school career
- Opportunities for increased **participation** in after-school activities and athletics
- Opportunities for improved **attendance and sense of belonging**
- Opportunities for increased **family engagement**
- **Ease of understanding** for families to engage in choice

# Choice Zone Schools

EQUITY • Access • Ease of Understanding • Diversity • Choice



The Academy @ Shawnee

New West End Middle

Network 1

Maupin Elementary

Kennedy Elementary

King Elementary

Network 2

Cochran Elementary

Engelhard Elementary

McFerran Elementary

Wheatley Elementary

Network 3

Atkinson Elementary

Breckinridge/Franklin Elementary

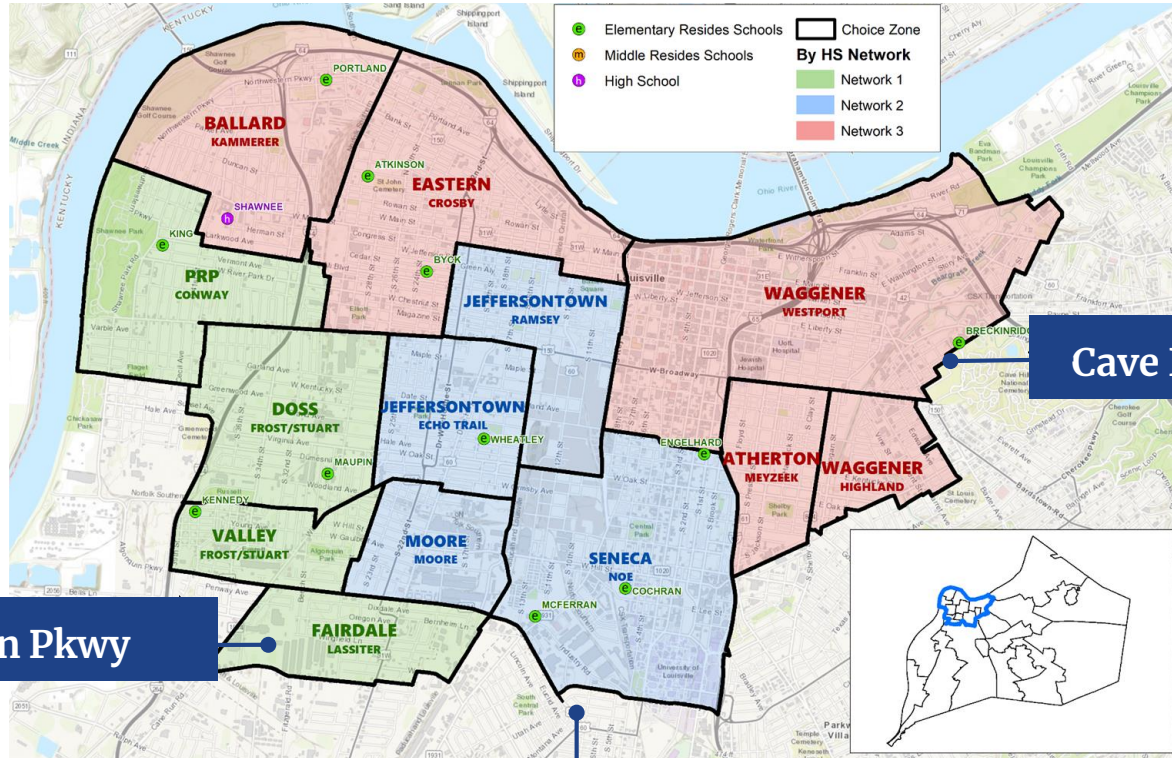
Byck Elementary

Portland Elementary



# Choice Zone

EQUITY • Access • Ease of Understanding • Diversity • Choice



Algonquin Pkwy

Cave Hill Cemetery

Eastern Pkwy



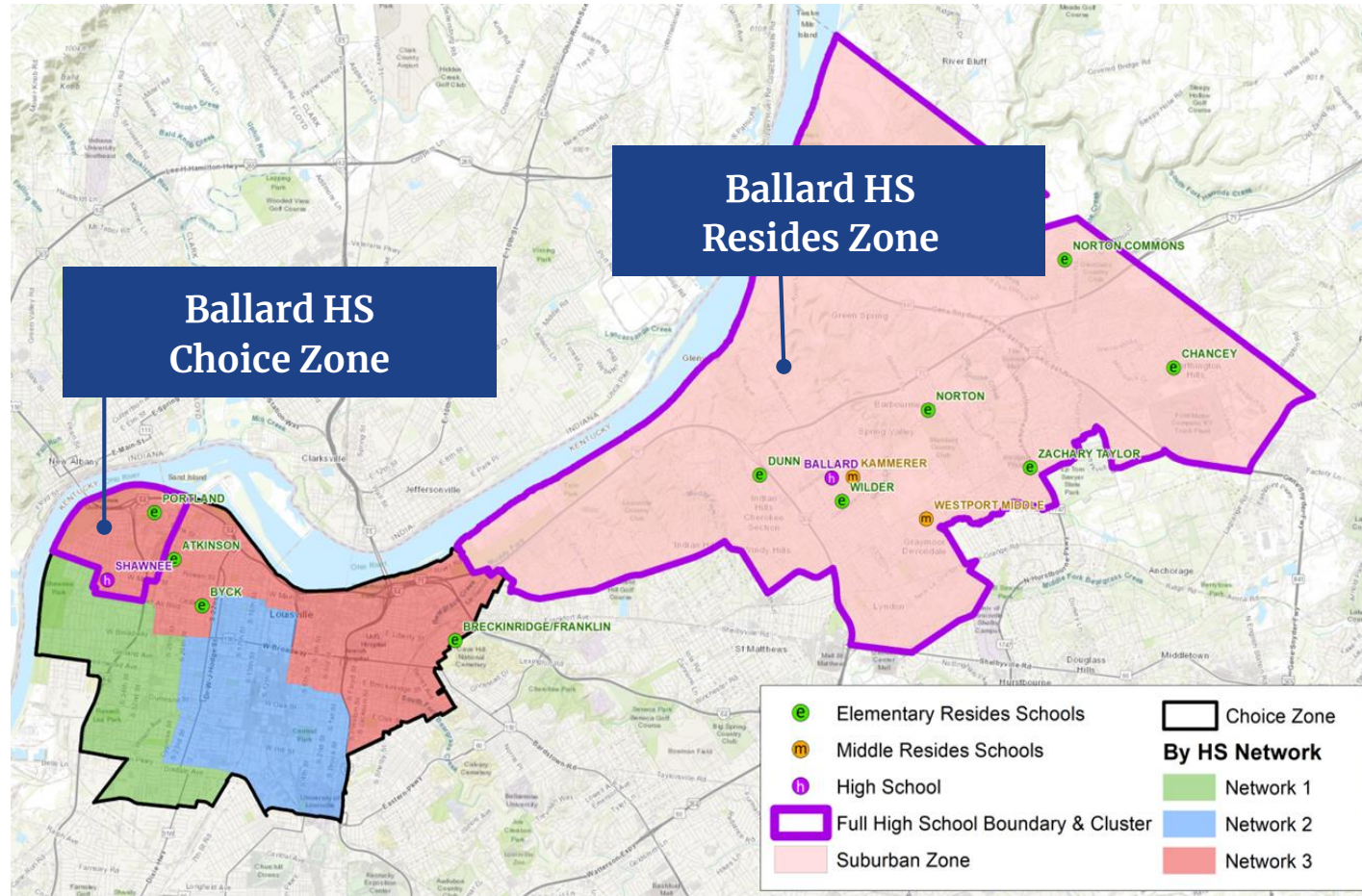
## Dual Resides:

Students living within the Choice Zone (black outline) will have the choice to attend an elementary, middle, or high school close to home

OR

A designated middle and high school and corresponding elementary cluster schools outside of the Choice Zone

Students living outside the Choice Zone will continue to be able to attend a school close to home and may apply for magnets, transfers, network schools



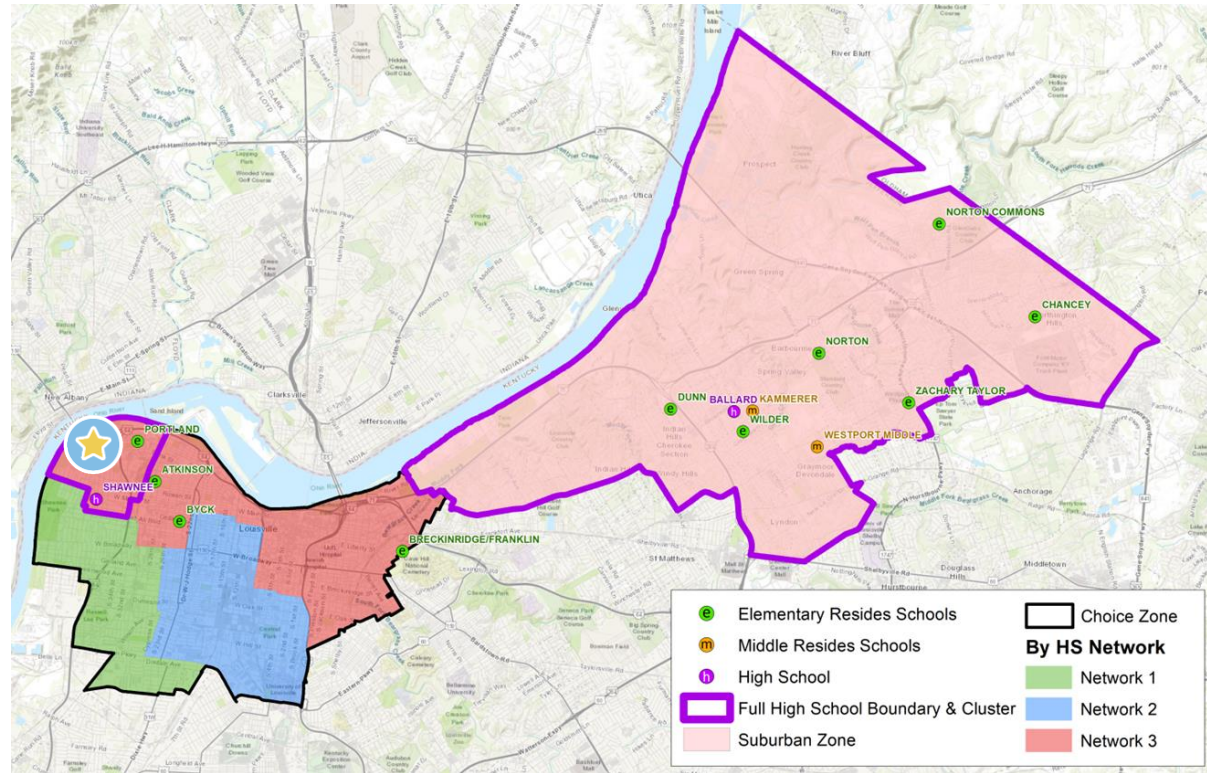
# Choice Zone: Example

EQUITY • Access • Ease of Understanding • Diversity • Choice

## STUDENT A



Level	Close to Home	Away from Home
Elementary**	<b>Portland</b> Atkinson Breck- Frank Byck	Chancey Dunn Norton Commons Norton Wilder Zachary Taylor
Middle^	New West Louisville Middle	Kammerer
High^	Academy @ Shawnee	Ballard



\*Close to Home Elementary options are based on High School Network; Student A can choose any Network 3 elementary school within the choice zone (in addition to the Ballard Cluster).

^All students may apply for magnets, transfers, and network schools

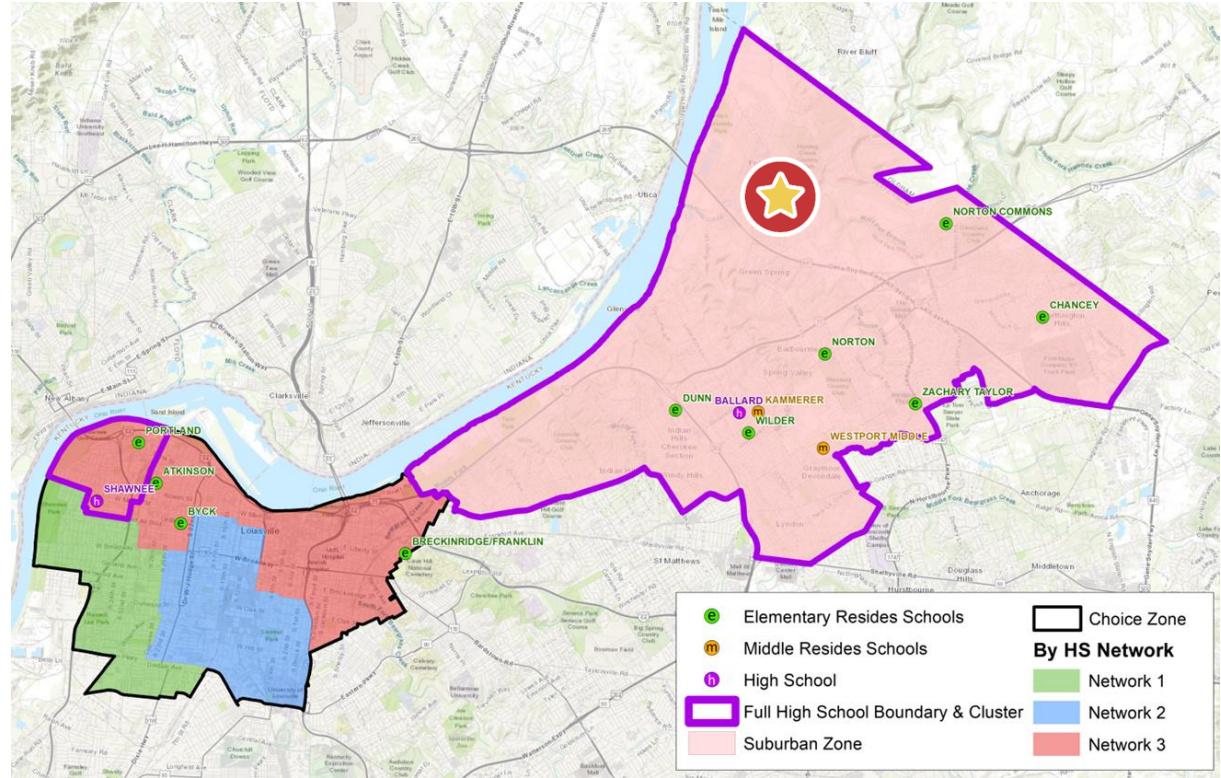


# Choice Zone: Example

EQUITY • Access • Ease of Understanding • Diversity • Choice

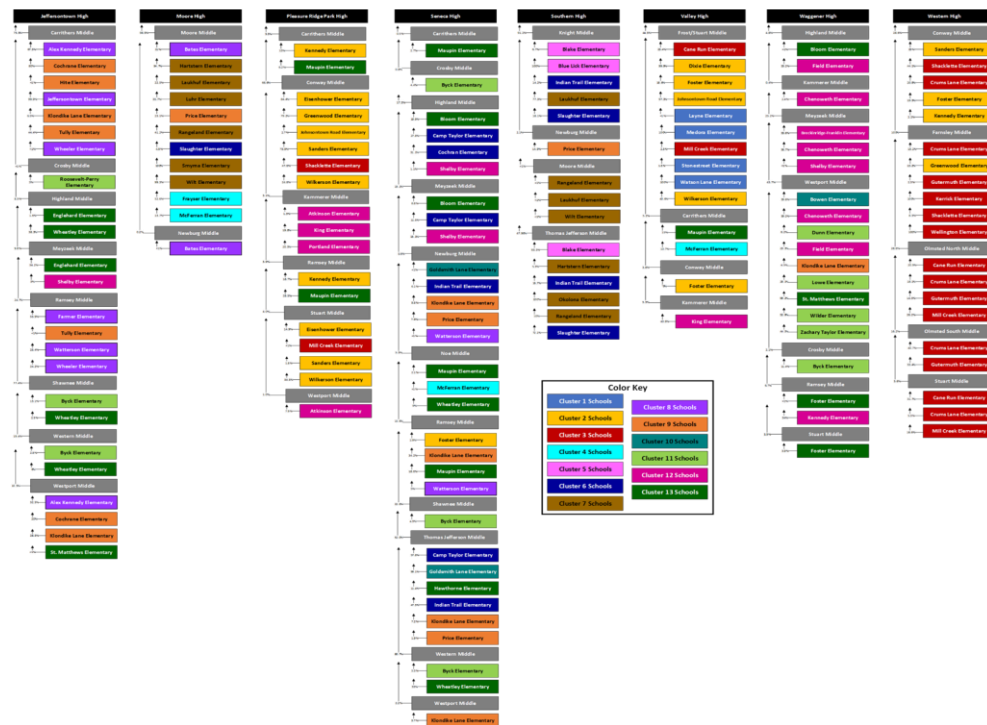
## STUDENT B

Level	Close to Home	Away from Home
Elementary	Chancey Dunn Norton Commons Norton Wilder Zachary Taylor	Portland
Middle	Kammerer	*Students may apply for magnets/transfers
High	Ballard	*Students may apply for magnets/transfers/network



# Current State:

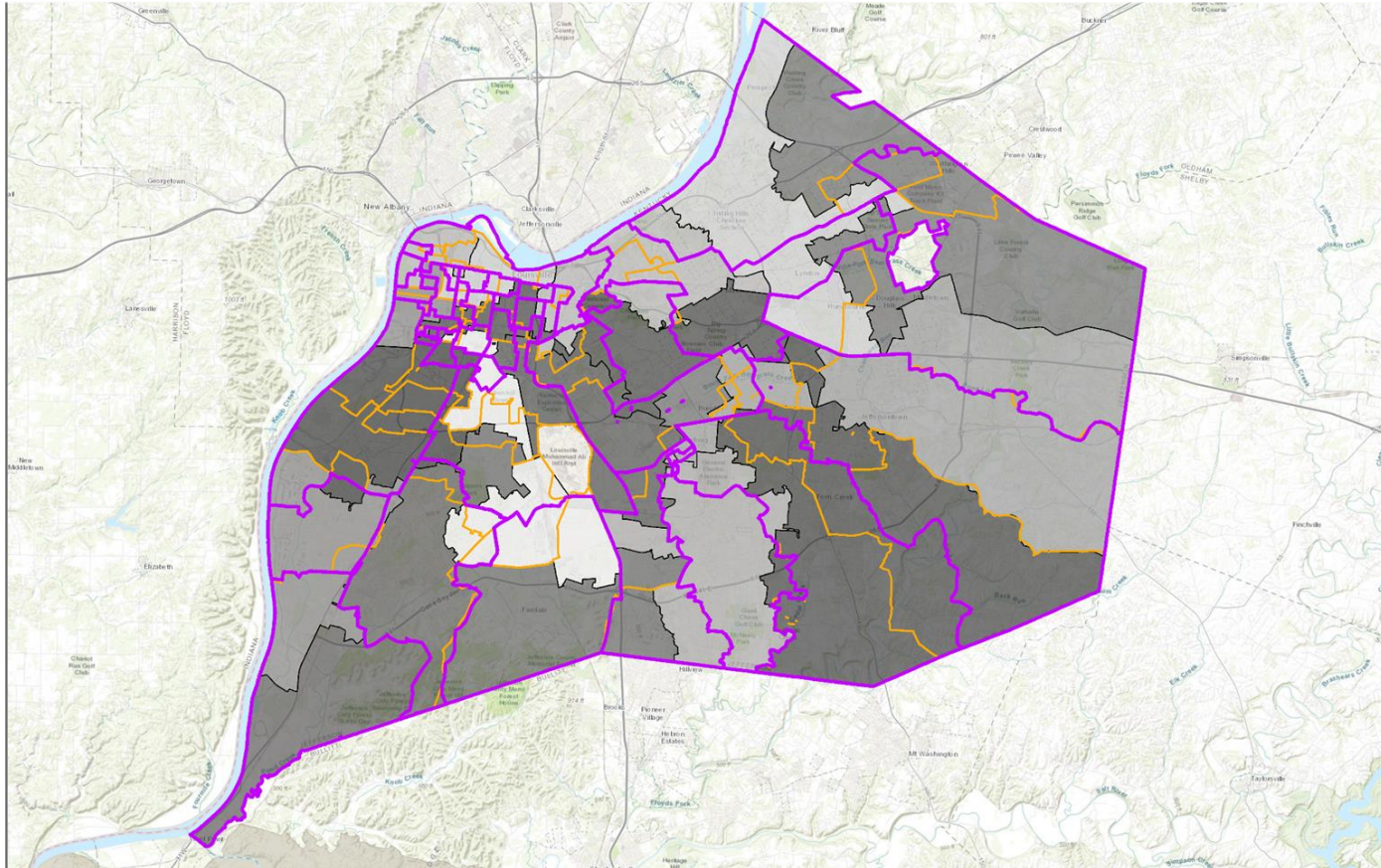
## *Feeder Patterns*



# Consistency

# Continuity

# Choice

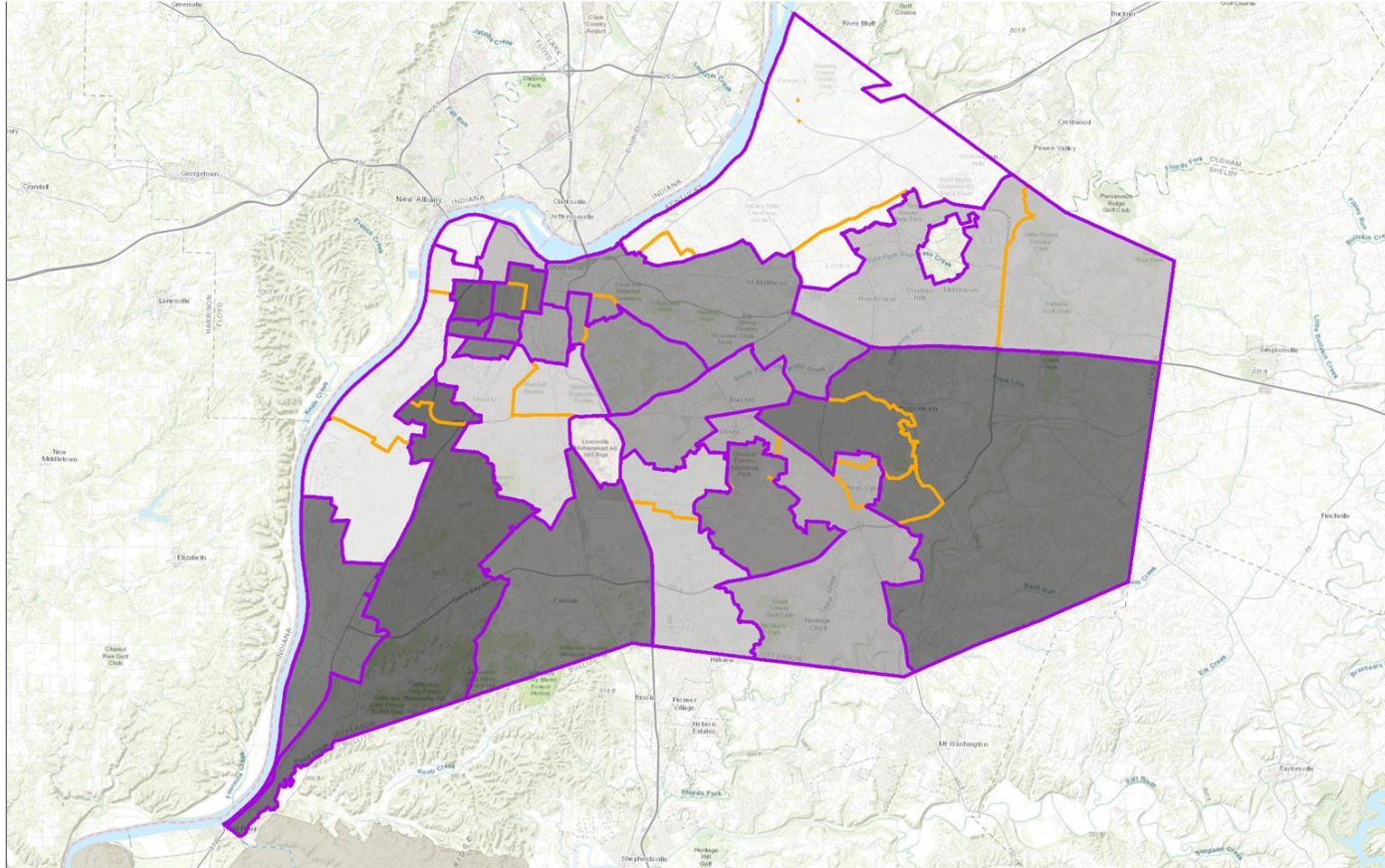




# Consistency

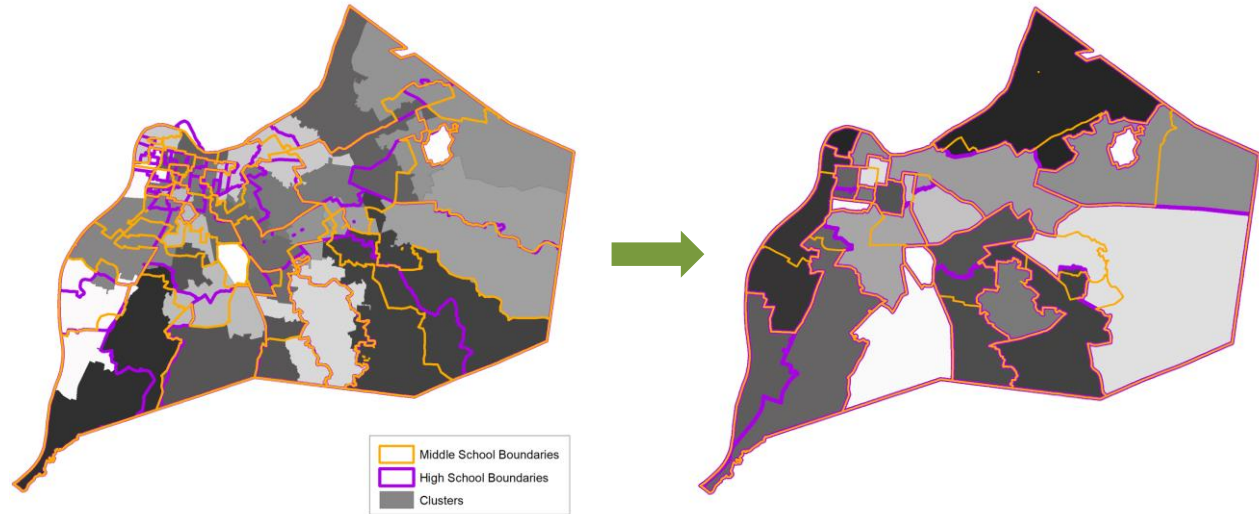
# Continuity

# Choice



## Feeder Pattern Alignment:

- Elementary Clusters are aligned **100%** with high school zones
- Most High Schools have **1-2** Middle School feeders

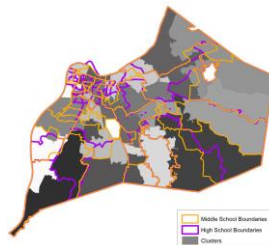


# Benefits: Feeder Patterns

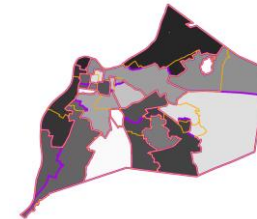
EQUITY • Access • Ease of Understanding • Diversity • Choice

Current Feeders	ATHERTON	BALLARD	DOSS	EASTERN	FAIRDALE	FERN CREEK	IROQUOIS	JEFFERSONTOWN	MOORE	PRP	SENECA	SHAWNEE	SOUTHERN	VALLEY	WAGGENER	WESTERN
CARRITHERS			5.95%		6.23%	0.12%	3.17%	75.45%		3.32%	0.54%			5.22%		
CONWAY			0.97%							66.59%				3.84%		28.60%
CROSBY		4.83%		90.01%				0.28%			0.83%	1.91%			2.14%	
FARNSELY																100.00%
HIGHLAND	51.70%	9.28%		4.08%	1.19%		3.16%	8.30%			17.49%				4.82%	
KAMMERER		57.53%	5.09%	14.33%						5.06%		12.30%		5.31%	0.39%	
KNIGHT							8.79%						91.21%			
LASSITER			10.58%		51.58%		37.84%									
MEYZEEK	28.20%			1.71%			5.19%	9.82%			15.11%	14.79%			25.18%	
MOORE							0.92%		98.94%				0.14%			
NEWBURG						92.07%			0.21%		5.61%		2.10%			
NOE					24.74%		69.94%				5.32%					28.56%
OLMSTED NORTH							71.44%									16.20%
OLMSTED SOUTH			17.00%		17.61%		49.19%									
RAMSEY			0.61%			46.56%		24.66%		5.90%	15.60%				6.67%	
SHAWNEE							77.41%			22.59%						
STUART		0.20%	35.67%		2.51%		2.34%			4.03%		1.29%		44.52%	3.87%	5.58%
THOMAS JEFFERSON											52.04%		47.96%			
WESTERN								19.35%			80.65%					
WESTPORT		4.10%		24.53%				10.54%		0.99%	2.17%	14.00%			43.67%	

Option Feeder Chart	ATHERTON	BALLARD	DOSS	EASTERN	FAIRDALE	FERN CREEK	IROQUOIS	JEFFERSONTOWN	MOORE	PRP	SENECA	SOUTHERN	VALLEY	WAGGENER
CARRITHERS						26.82%		73.18%						
CONWAY														
CROSBY				100.00%						100.00%				
FARNSELY										100.00%				
HIGHLAND	95.24%													4.76%
KAMMERER		100.00%												
KNIGHT												100.00%		
LASSITER					100.00%									
MEYZEEK	24.46%						75.54%							
MOORE								100.00%						
NEWBURG						100.00%								
NOE											100.00%			
OLMSTED NORTH/SOUTH			7.80%				92.20%							
RAMSEY						79.12%		20.88%						
STUART			64.40%										35.60%	
THOMAS JEFFERSON											52.81%	47.19%		
WESTPORT		32.67%												67.33%
ECHO TRAIL (NEW)				48.72%				51.28%						



90  
|  
27

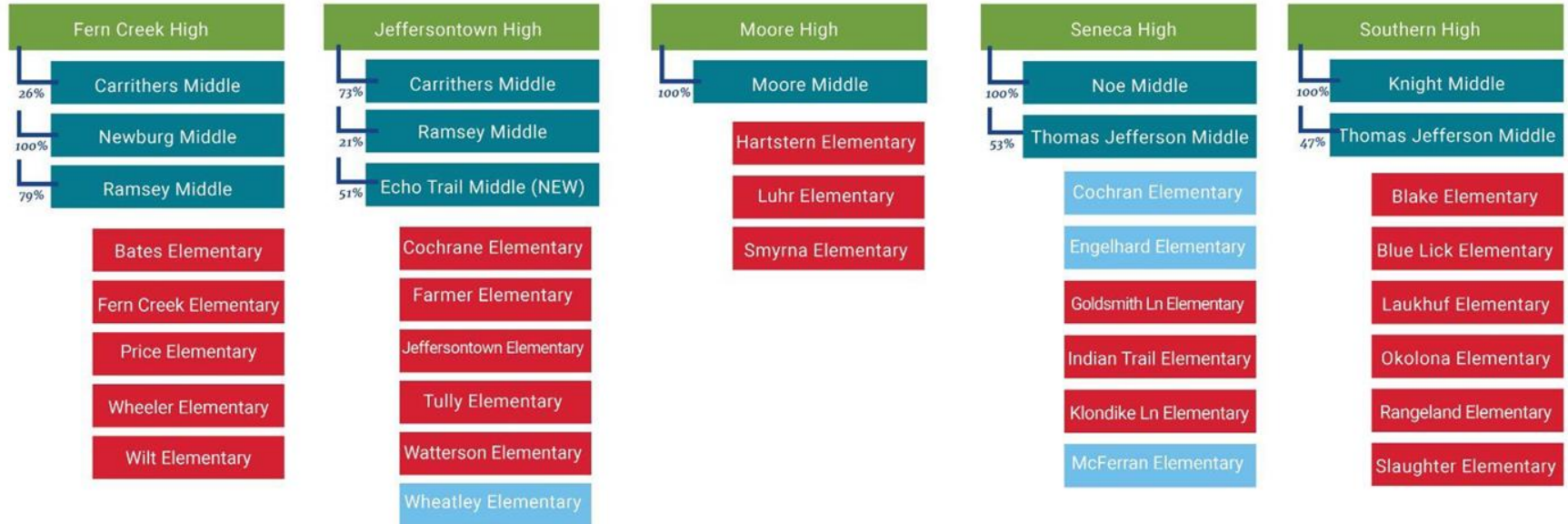




# Benefits: Feeder Patterns

EQUITY • Access • Ease of Understanding • Diversity • Choice

## Network 2



Choice Zone  
Elementary  
Options

Cochran Elementary

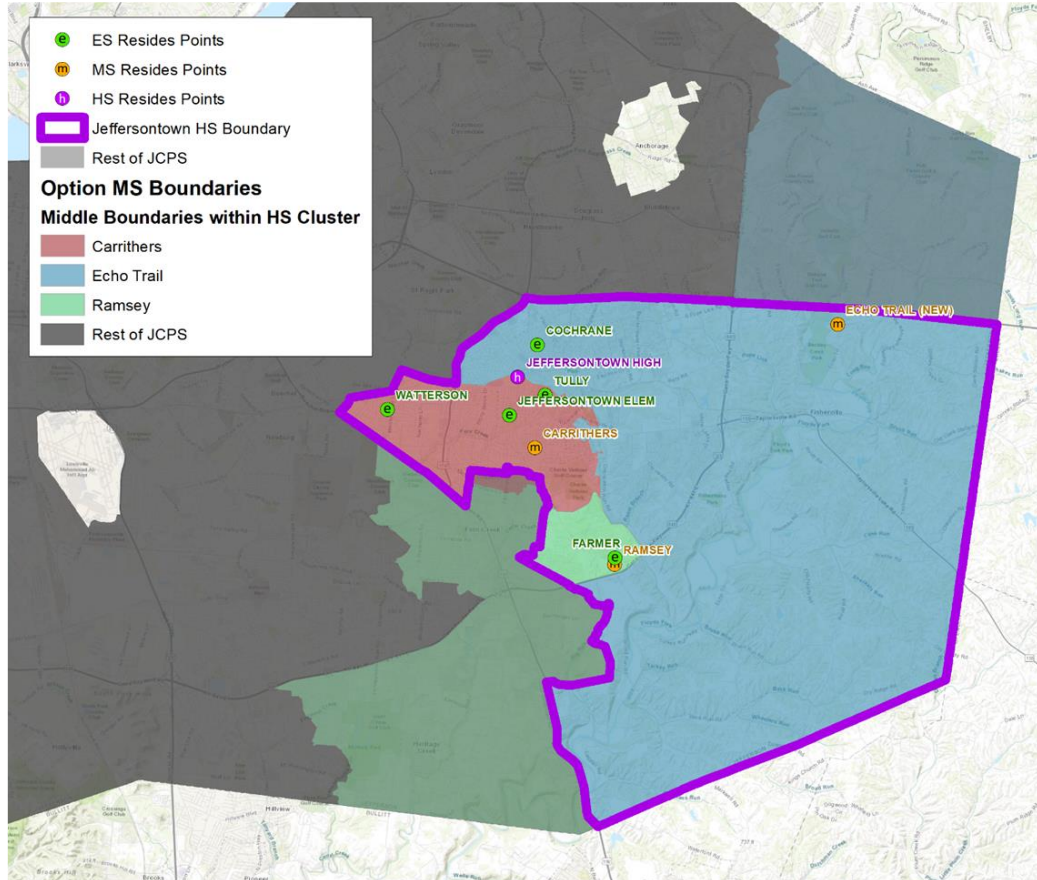
Engelhard Elementary

McFerran Elementary

Wheatley Elementary

# Benefits: *Feeder Patterns*

EQUITY • Access • Ease of Understanding • Diversity • Choice



## Jeffersontown High School Boundary & Cluster

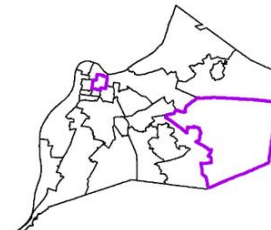
### Jeffersontown High

69%	Carrithers Middle
21%	Ramsey Middle
10%	Echo Trail Middle (NEW)

Cochrane Elementary
Farmer Elementary
Jeffersontown Elementary
Tully Elementary
Wheatley Elementary

### Close to Home Options

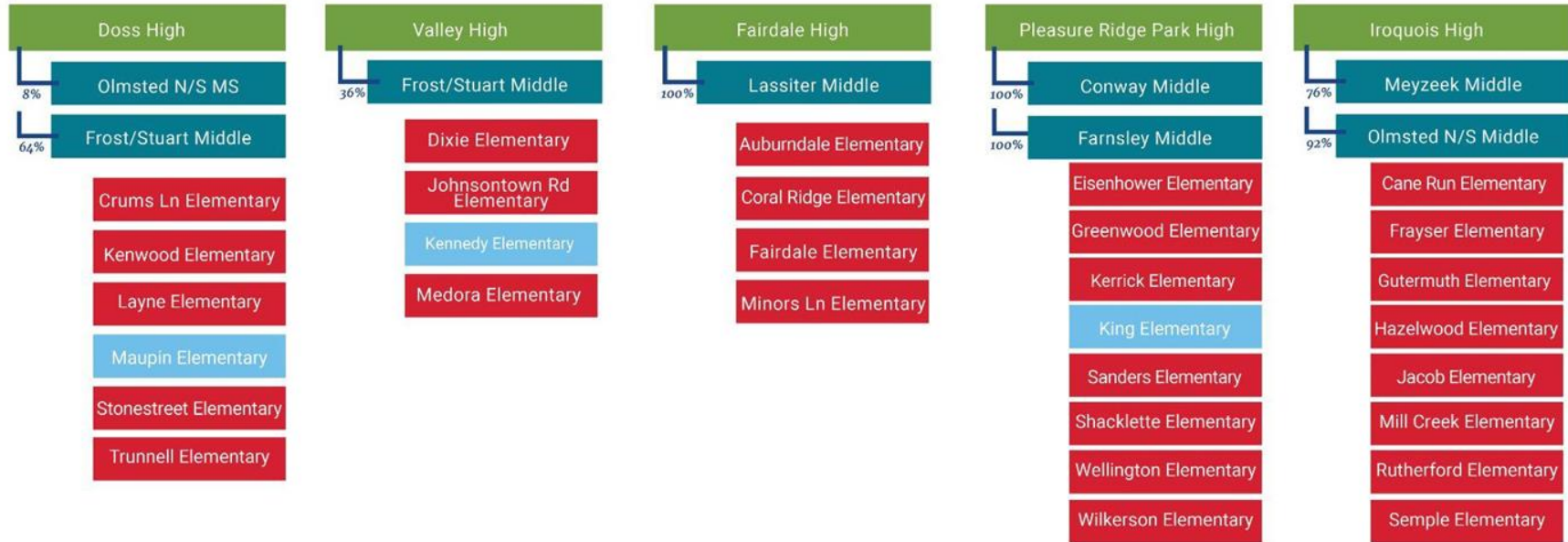
Cochran Elementary
Engelhard Elementary
McFerran Elementary



# Benefits: *Feeder Patterns*

EQUITY • Access • Ease of Understanding • Diversity • Choice

## Network 1



*Choice Zone  
Elementary  
Options*

Maupin Elementary

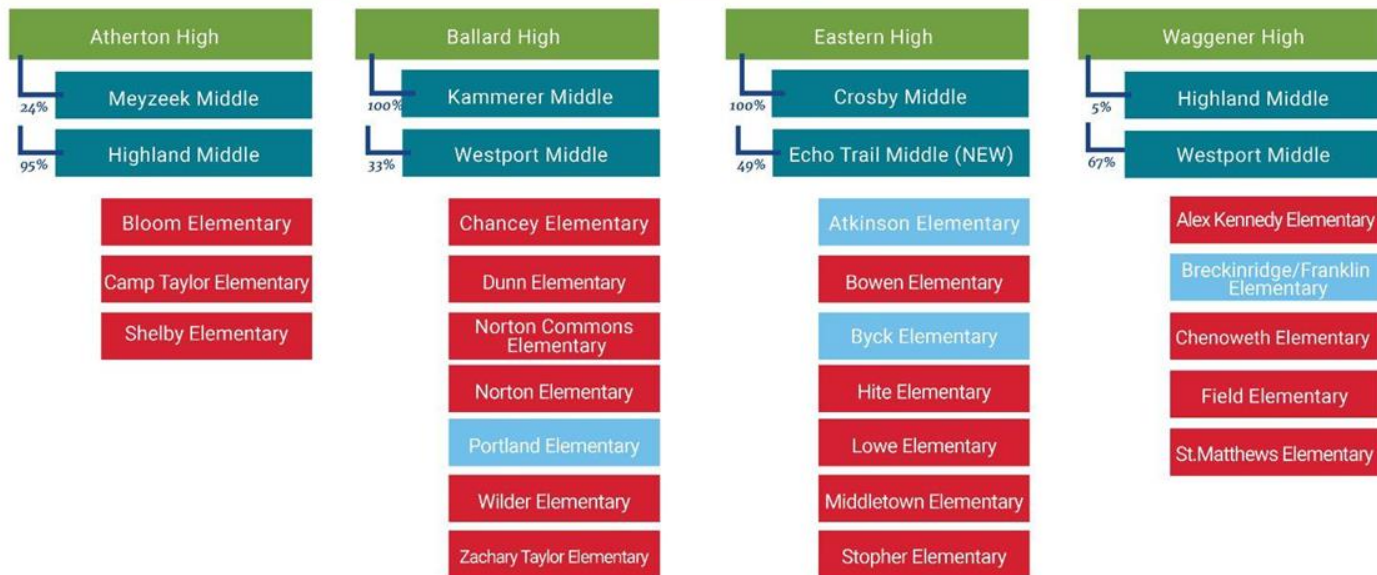
Kennedy Elementary

King Elementary

# Benefits: *Feeder Patterns*

EQUITY • Access • Ease of Understanding • Diversity • Choice

## Network 3



*Choice Zone  
Elementary  
Options*

Atkinson Elementary

Breckinridge/Franklin  
Elementary

Byck Elementary

Portland Elementary

# Remember our *WHY*

EQUITY • Access • *Ease of Understanding* • Diversity • Choice

## Consistency

**ALL** students get a school choice that is **close to home**

## Continuity

Improved feeder patterns & **predictability** for families

## Choice

Students in Choice Zone have **additional choice**

*Improved Sense of Belonging Leads to Positive Student Outcomes*

# JCPS Investment Plan

*Jefferson County Board of Education Resolution, September 2020*

Whereas, the Jefferson County Board of Education has established a bold vision for the Future State of Jefferson County Public Schools (JCPS); and

Whereas, the Future State of JCPS seeks to transform our students, our schools, and our city through strategic investment in the critical elements needed for all JCPS students to fulfill their academic, creative, and social potential...

Now, therefore, be it resolved that:

1. The Board expresses its intent that the District will budget and spend revenues from the voter-approved tax increase of approximately \$54 million in fiscal year 2021-22 according to the Future State plan:
  - a. At least \$15 million for 21st century facilities that engage students and faculty;
  - b. **At least \$15 million for resources in our highest-need schools;**
  - c. At least \$12 million for racial equity initiatives; and
  - d. At least \$12 million for additional student instructional time.







# Proposal: Choice Zone Support Plan



## Learning Environment



### Budget Formula

- Implement a funding formula that will **equitably fund** schools with high concentrations of poverty based on feedback from school and district administrators



### Staffing & Resources

- Utilize new funding formula for **increased staffing** at schools with high concentrations of poverty
- Create the role of the **Executive Principal and Project Manager**
- Offer **competitive compensation package** to attract and retain quality staff



# Proposal: Choice Zone Support Plan



## Learning Experiences



### Curriculum & Pedagogy

- Provide **extended** learning time and **flexible** calendar
- Offer on-Boarding and continued **professional development** for teachers, coaches, and leaders
- Implement curriculum that **reflects student experiences**



- Deploy **wrap-around** supports

### Social Emotional Learning Supports

- Create a **menu of options** for schools to choose from when identifying an SEL curriculum
- Develop a **school SEL team** that will organize and create processes for school-wide implementation
- **Train** teachers on SEL components and expectations for implementation





# High School Support Plan

Academy @ Shawnee

## Academic Supports

- Extended Learning (After School and Summer)
- Career Pathway Expansion
- College Courses Offered
- Meaningful and Relevant Curriculum
- Focus on Reading and Math

## Non-Academic Supports

- More Counselors and Mental Health Practitioners
- More Athletic and Extracurricular Activities

## Teacher & Administrative Supports

- Increased pay for Teachers, Administrators, Instructional Staff
- Project Manager
- Additional Instructional Staff
- Additional Professional Development Opportunities

**JCPS Investment Plan**

**\$2.5 million**

## Additional Investments

- Small Class Size (*based on new allocation formula*)
- Simulator Enhancements
- 1:1 Technology Devices
- Facilities renovations

# Middle School Support Plan

*New West Louisville  
Middle School*

## Academic Supports

- Extended Learning (After School and Summer)
- Connection to High School Pathways
- Meaningful and Relevant Curriculum
- Focus on Reading and Math

## Non-Academic Supports

- More Counselors and Mental Health Practitioners
- More Athletic and Extracurricular Activities

## Teacher & Administrative Supports

- Increased pay for Teachers, Administrators, Instructional Staff
- Project Manager
- Additional Instructional Staff
- Additional Professional Development Opportunities

**JCPS Investment Plan**

**\$2.5 million**

## Additional Investments

- Small Class Size (*based on new allocation formula*)
- 1:1 Technology Devices
- Facility construction - new building



# Elementary School Support Plan

## Network 1

Maupin Elementary  
Kennedy Elementary  
King Elementary

## Network 2

Cochran Elementary  
Engelhard Elementary  
McFerran Elementary  
Wheatley Elementary

## Network 3

Atkinson Elementary  
Breckinridge/Franklin Elementary  
Byck Elementary  
Portland Elementary

## Academic Supports

- Small Class Size
- Extended Learning (After School and Summer)
- Enrichment Activities: Field Trips/Guest Speakers
- Magnet Program Enhancements
- Meaningful and Relevant Curriculum
- Focus on Reading and Math

## Non-Academic Supports

- More Counselors and Mental Health Practitioners
- More Athletic and Extracurricular Activities

## Teacher & Administrator Supports

- Increased pay for Teachers, Administrators, Instructional Staff
- Project Manager
- Additional Instructional Staff
- Additional Professional Development Opportunities

**JCPS Investment Plan**

**\$7 million (across 11 schools)**

## Additional Investments

- 1:1 Technology Devices
- Facilities Renovations



# Choice Zone Continuous Improvement: *Monitoring & Accountability*

EQUITY • Access • Ease of Understanding • Diversity • Choice

## Formative Evaluation Process

- A **project manager** serves as liaison between schools, central office, and community
- The project manager ensures that **critical timelines** are met; **eliminates barriers**; **convenes stakeholder groups** to review progress and gather feedback.
- This process allows for **reflection** of what has worked well, challenges encountered, and adjustments that need to be made to maximize student outcomes

## Summative Evaluation Process

- Serves as a **formal evaluation** of the plan by both internal staff and an external entity.
- Each year, JCPS will **publicly report** to the Jefferson County Board of Education on key implementation and outcome metrics.
- Each year, JCPS will contract with an **external agency** to conduct an outside evaluation of the support plan and produce a public report.
- This process will provide **accountability** to ensure that the plan is implemented with fidelity.



# Moving the work forward: *Timeline*

# Road to the Future State

EQUITY • Access • Ease of Understanding • Diversity • Choice



## February - March

- Board member presentations and feedback
- District and school leader presentations and feedback



## March - April

- Community/ stakeholder feedback sessions
- Family/Student input
- Board community forum
- Revisions based on input



## May

- Board work session
- Board presentation of final school choice proposal



---

School Choice Proposal  
Website



---

Online Survey & Community  
Feedback Form



---

Virtual and In-Person  
Informational Sessions



---

Board Community Forum

# *Improved Sense of Belonging Leads to Positive Student Outcomes*

## The time is NOW!

---

To reach our future state, we are committed to:

- Increasing choice for students in the Choice Zone who previously did not have choice
- Aligning Feeder Patterns for elementary, middle, and high school students
- Implementing a comprehensive magnet strategy that aligns with MSA and provides equitable access for Black and Brown students that leads to positive student outcomes



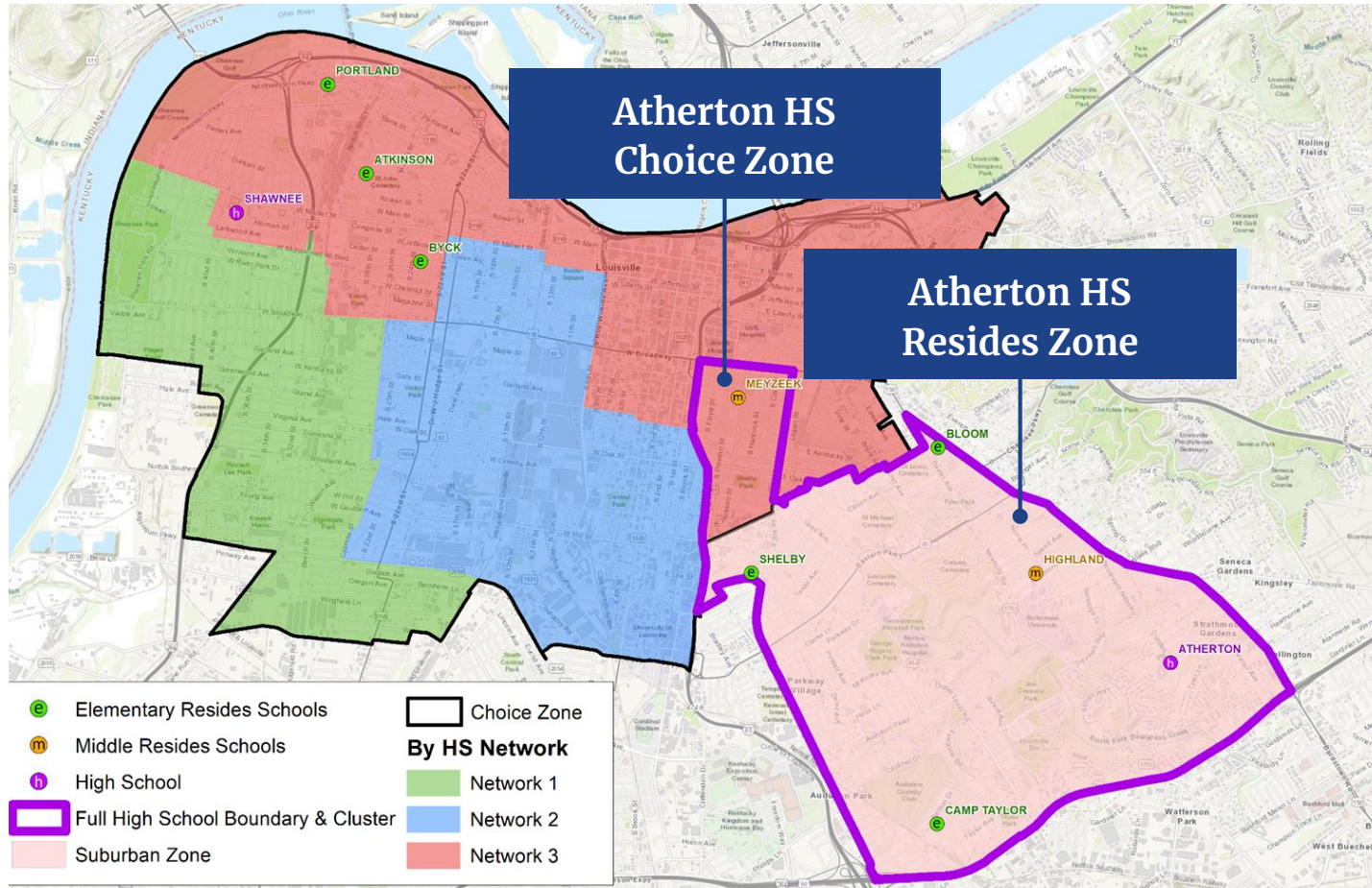
# Questions and Feedback

Consistency

Continuity

Choice

# Atherton High School

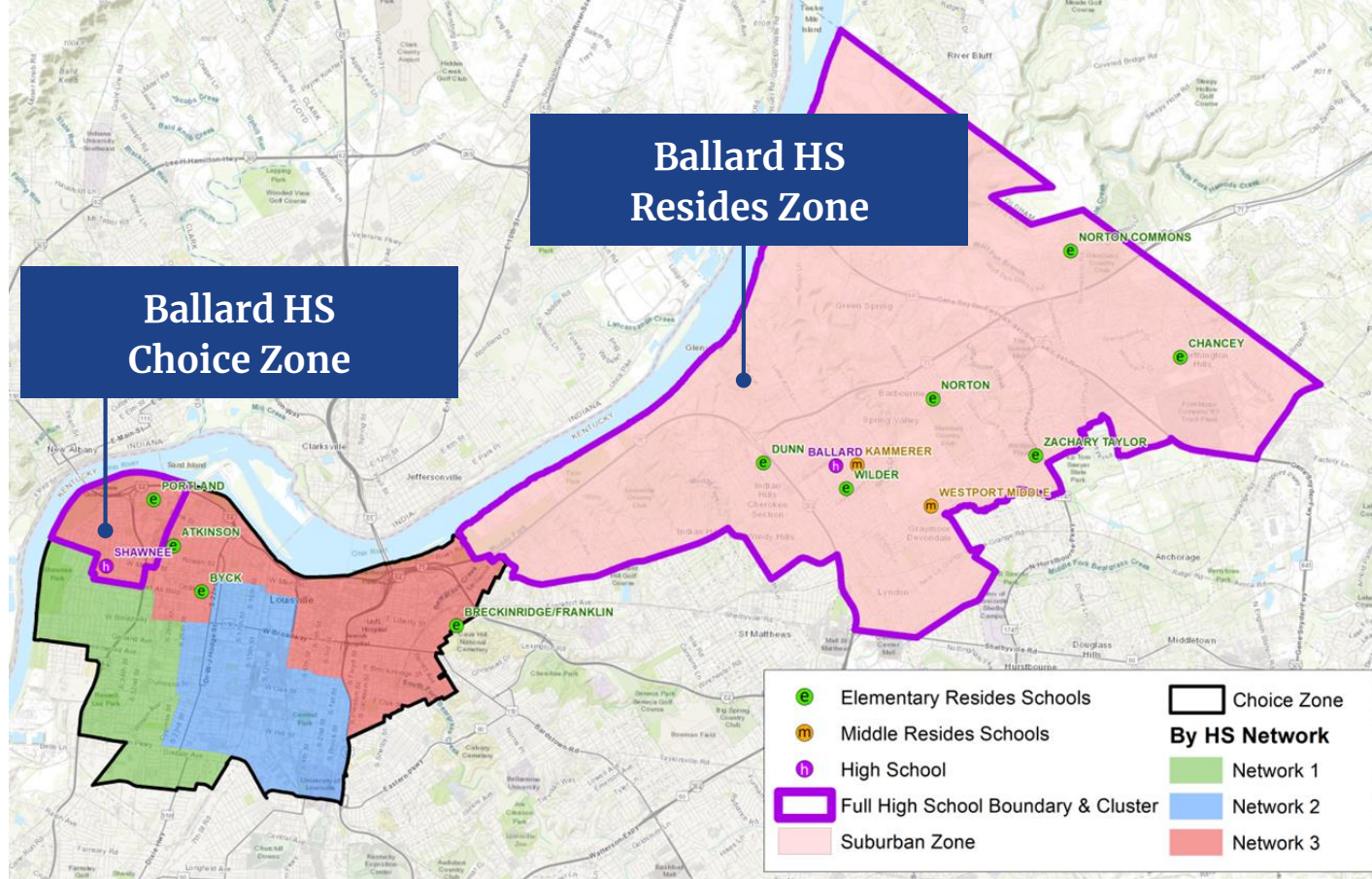


Consistency

Continuity

Choice

# Ballard High School



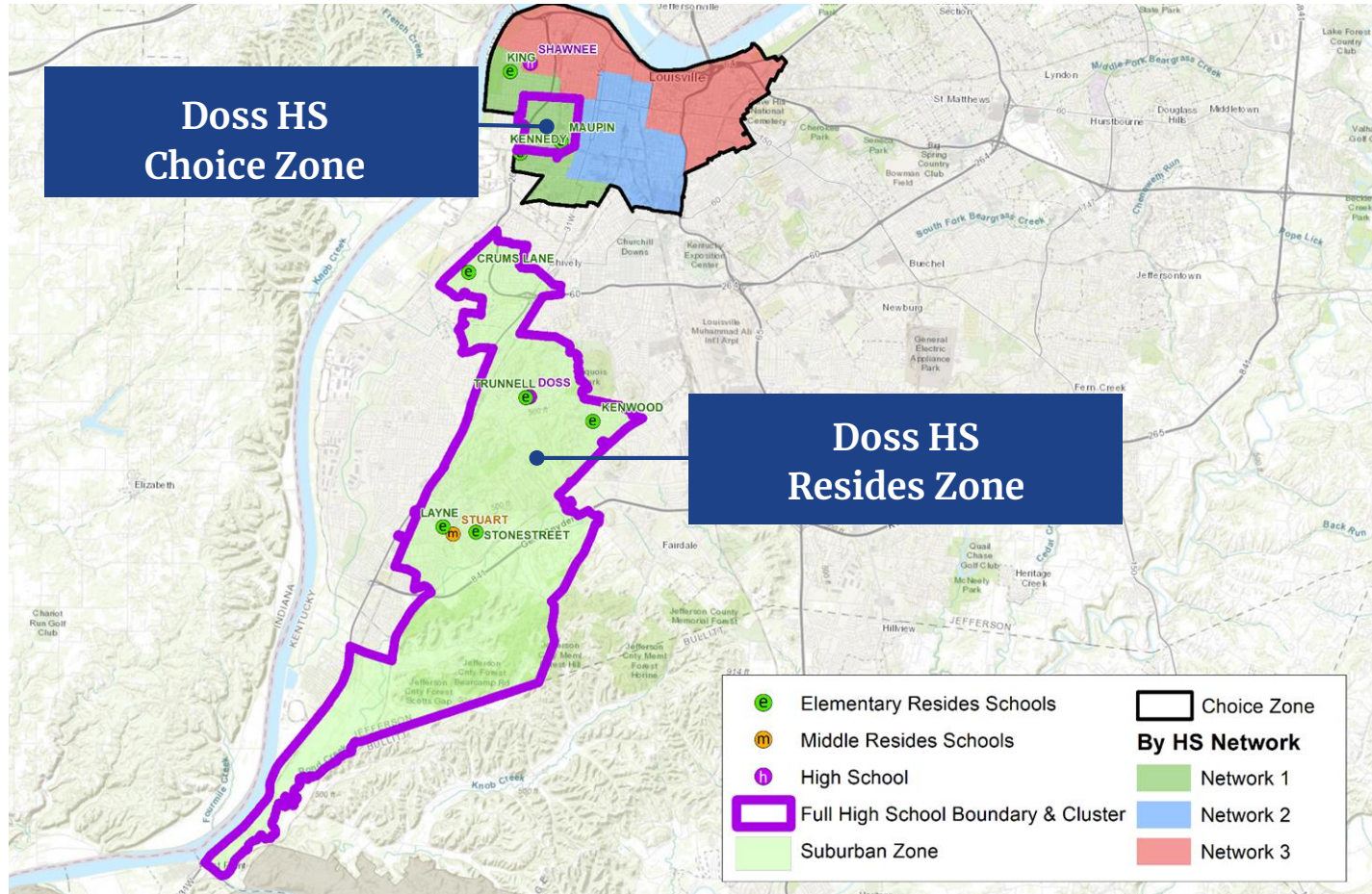


Consistency

Continuity

Choice

# Doss High School

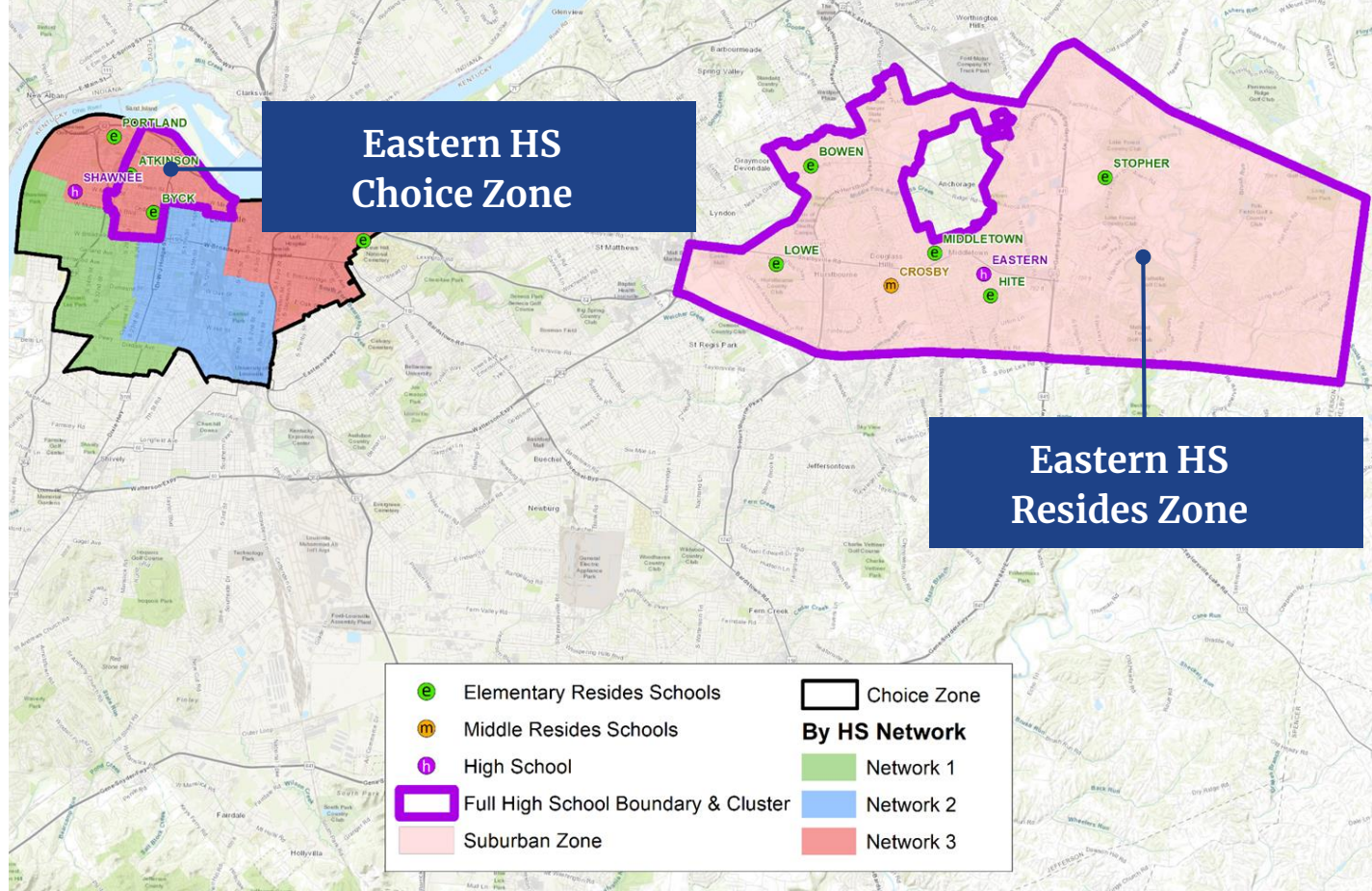


Consistency

Continuity

Choice

# Eastern High School



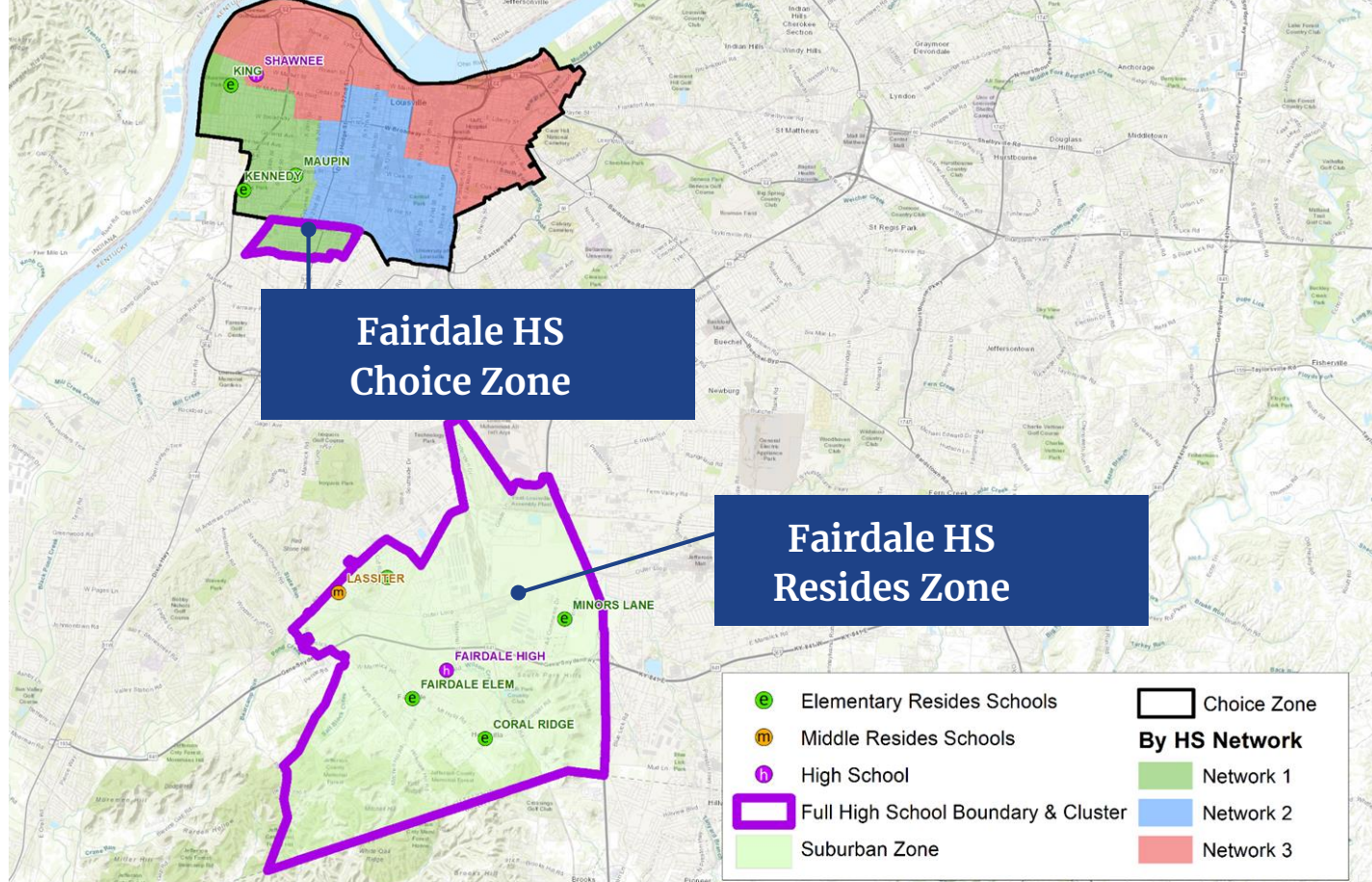


Consistency

Continuity

Choice

# Fairdale High School

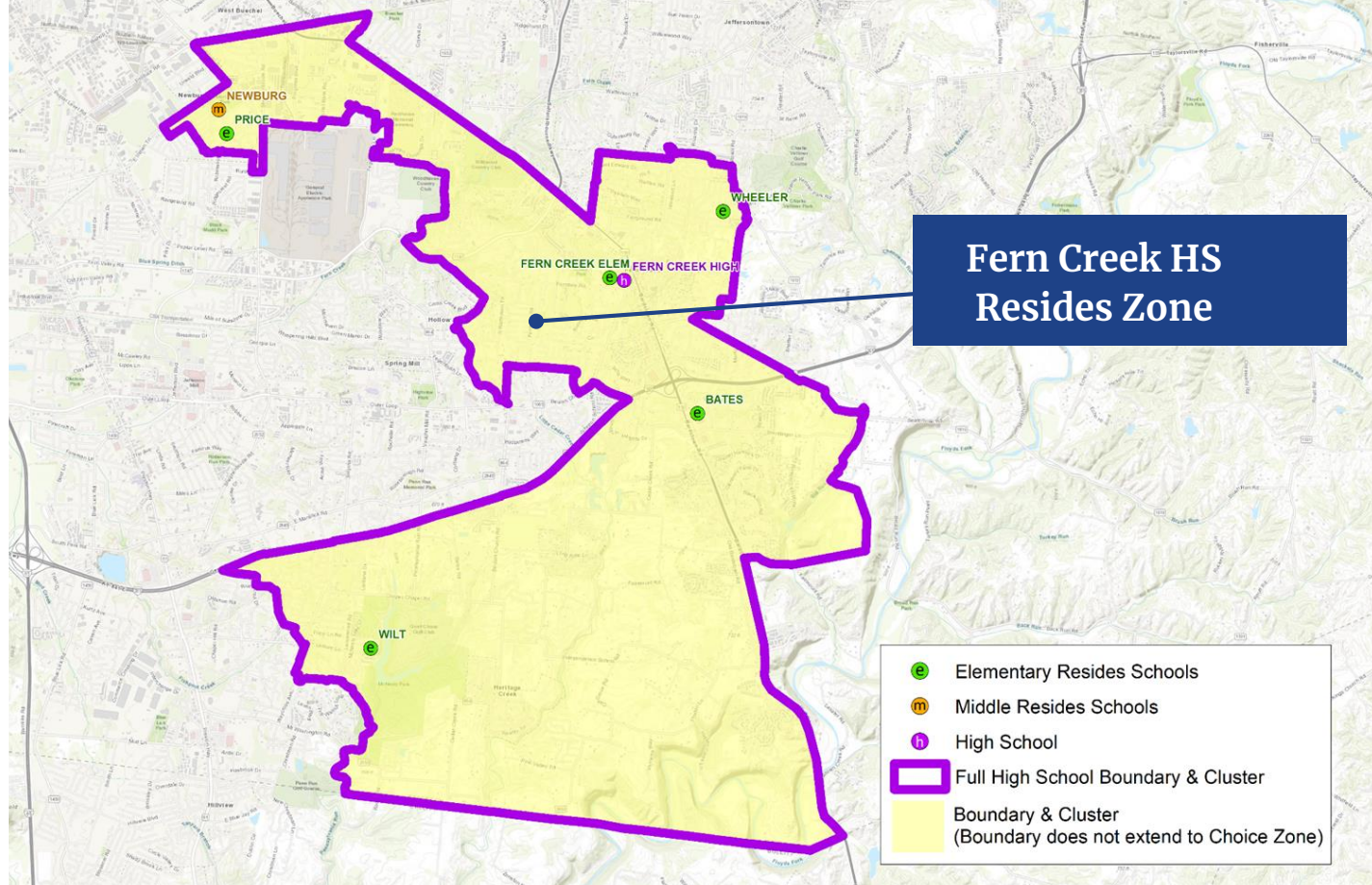


Consistency

Continuity

Choice

## Fern Creek High School



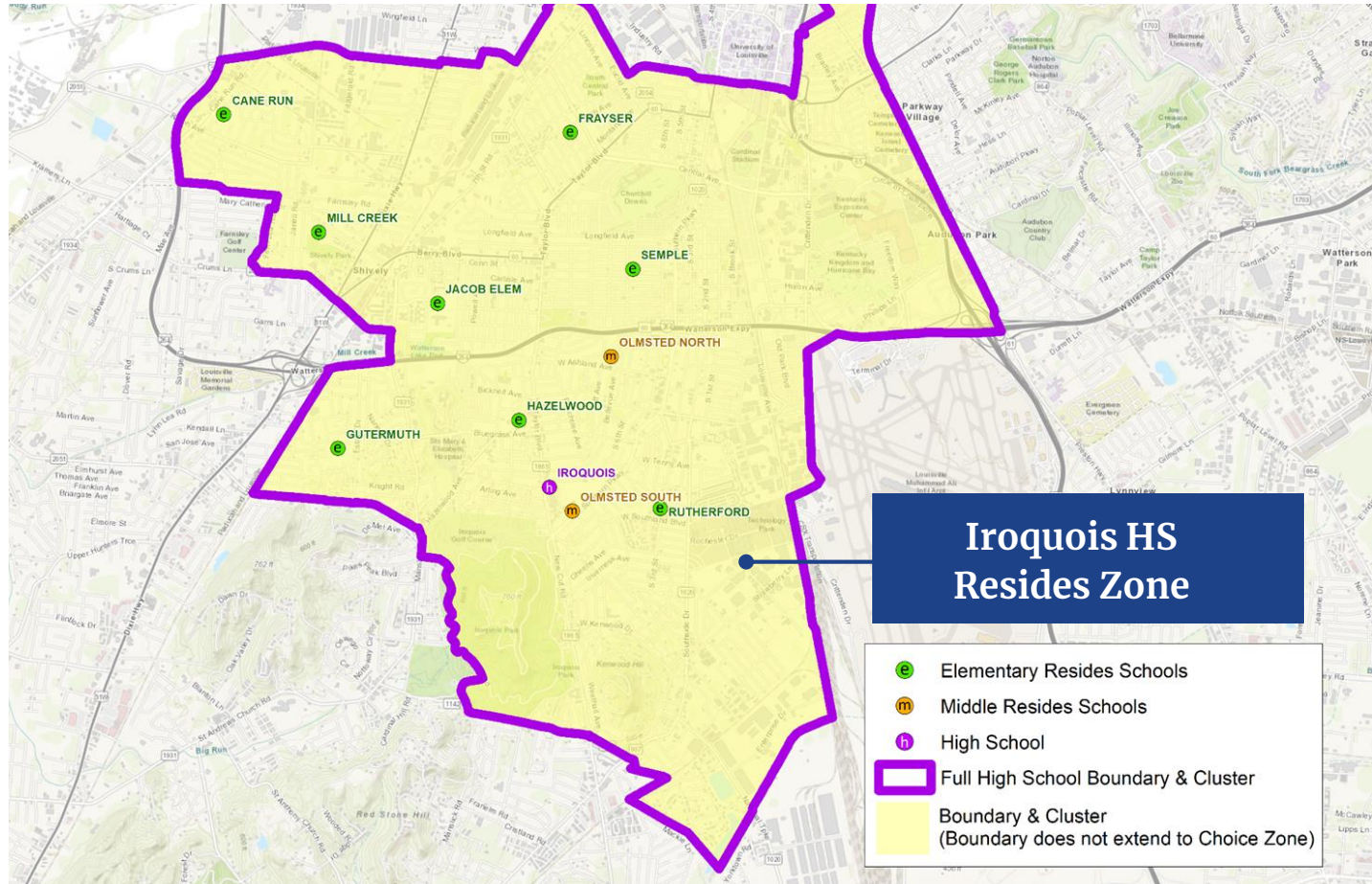


Consistency

Continuity

Choice

# Iroquois High School



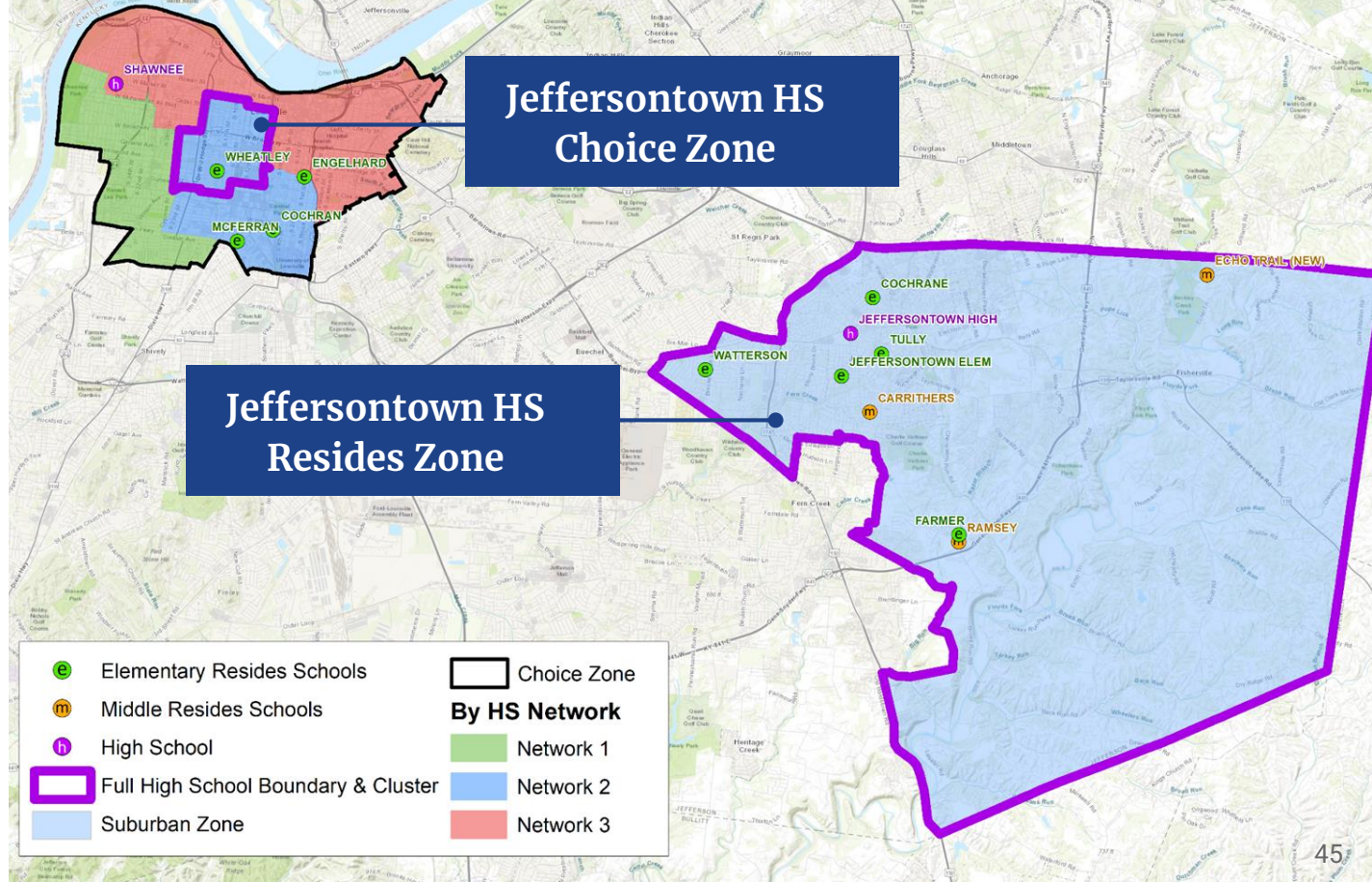


Consistency

Continuity

Choice

# Jeffersontown High School

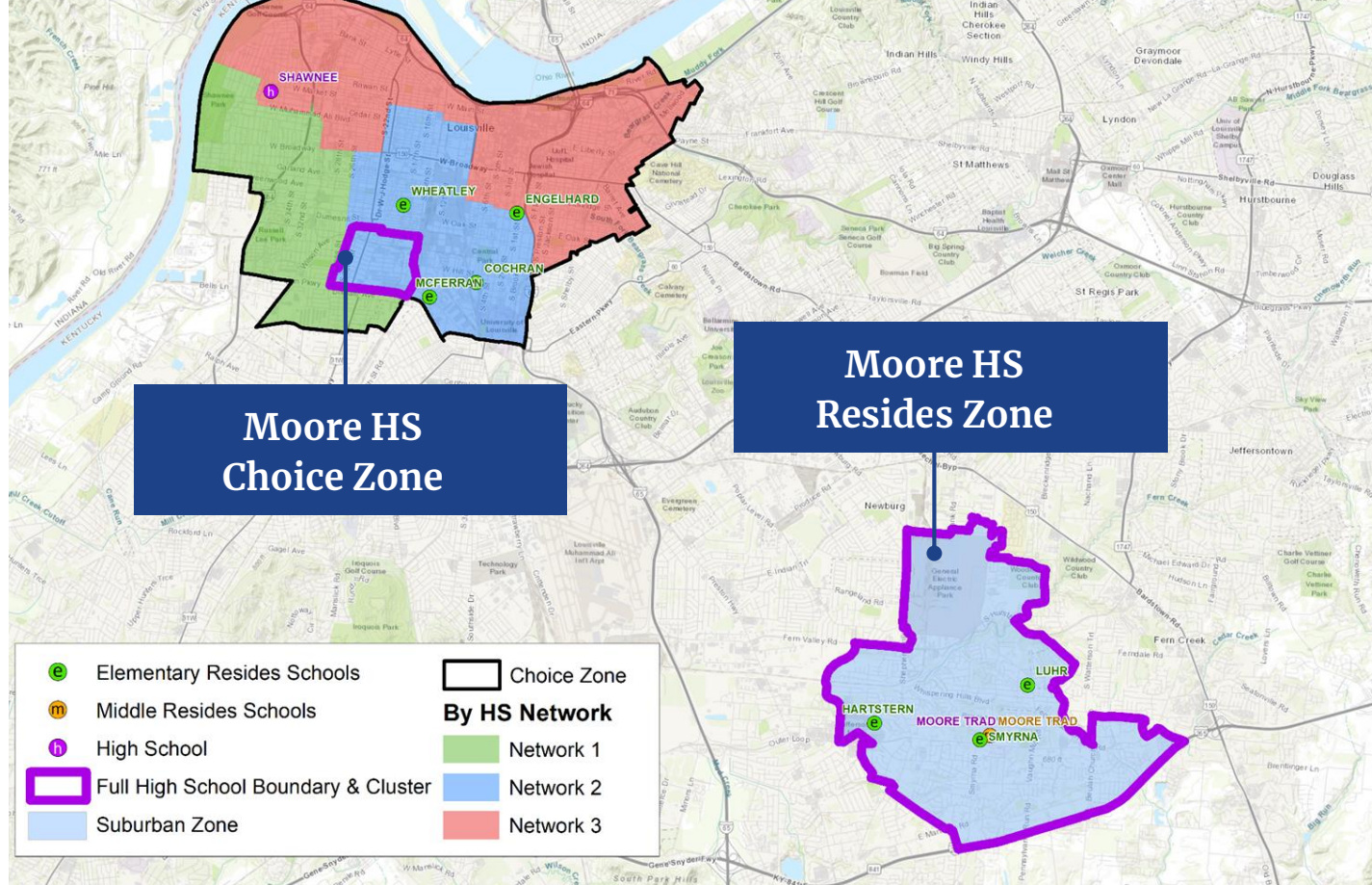


Consistency

Continuity

Choice

# Moore High School



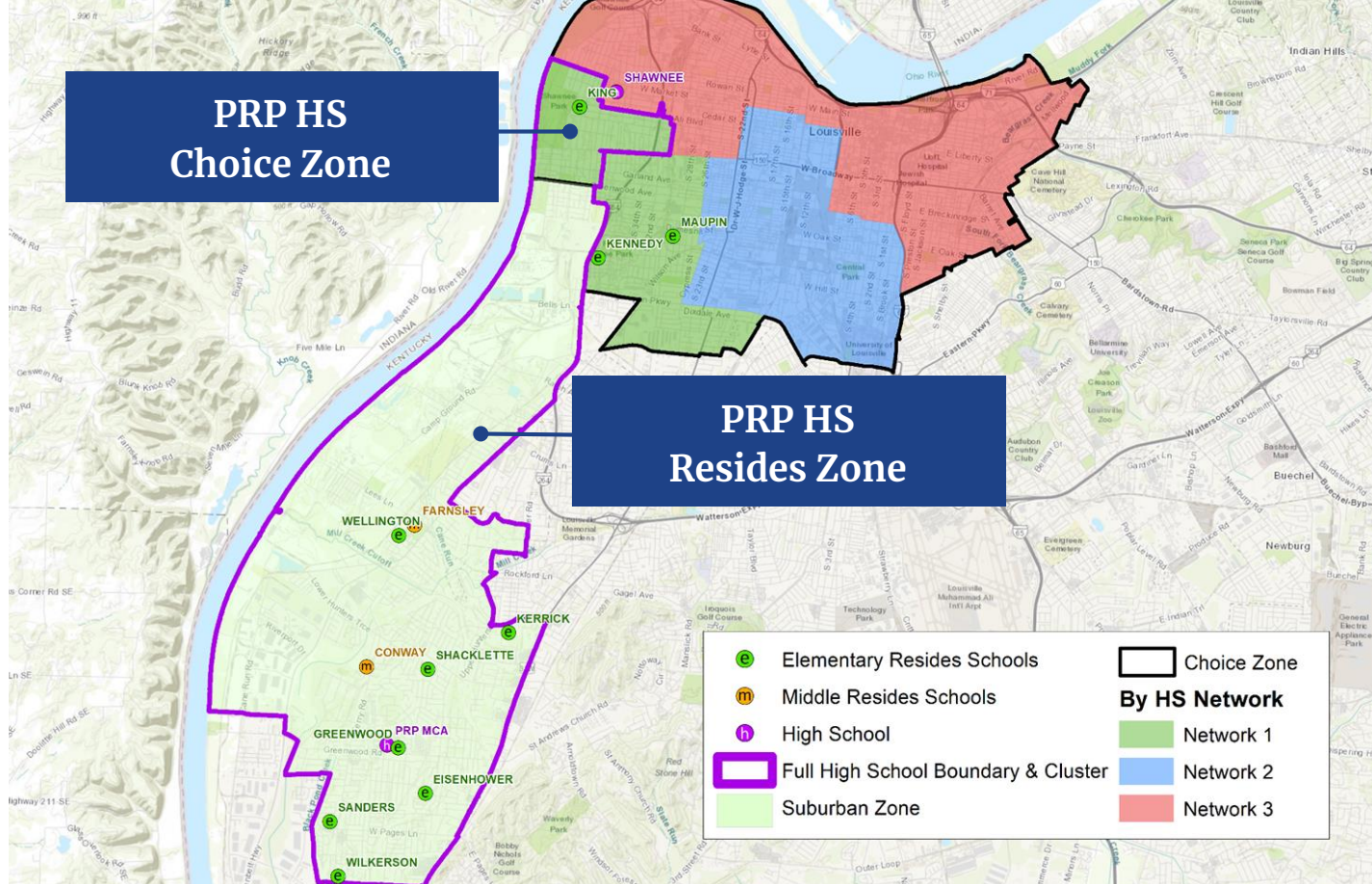


Consistency

Continuity

Choice

# PRP High School

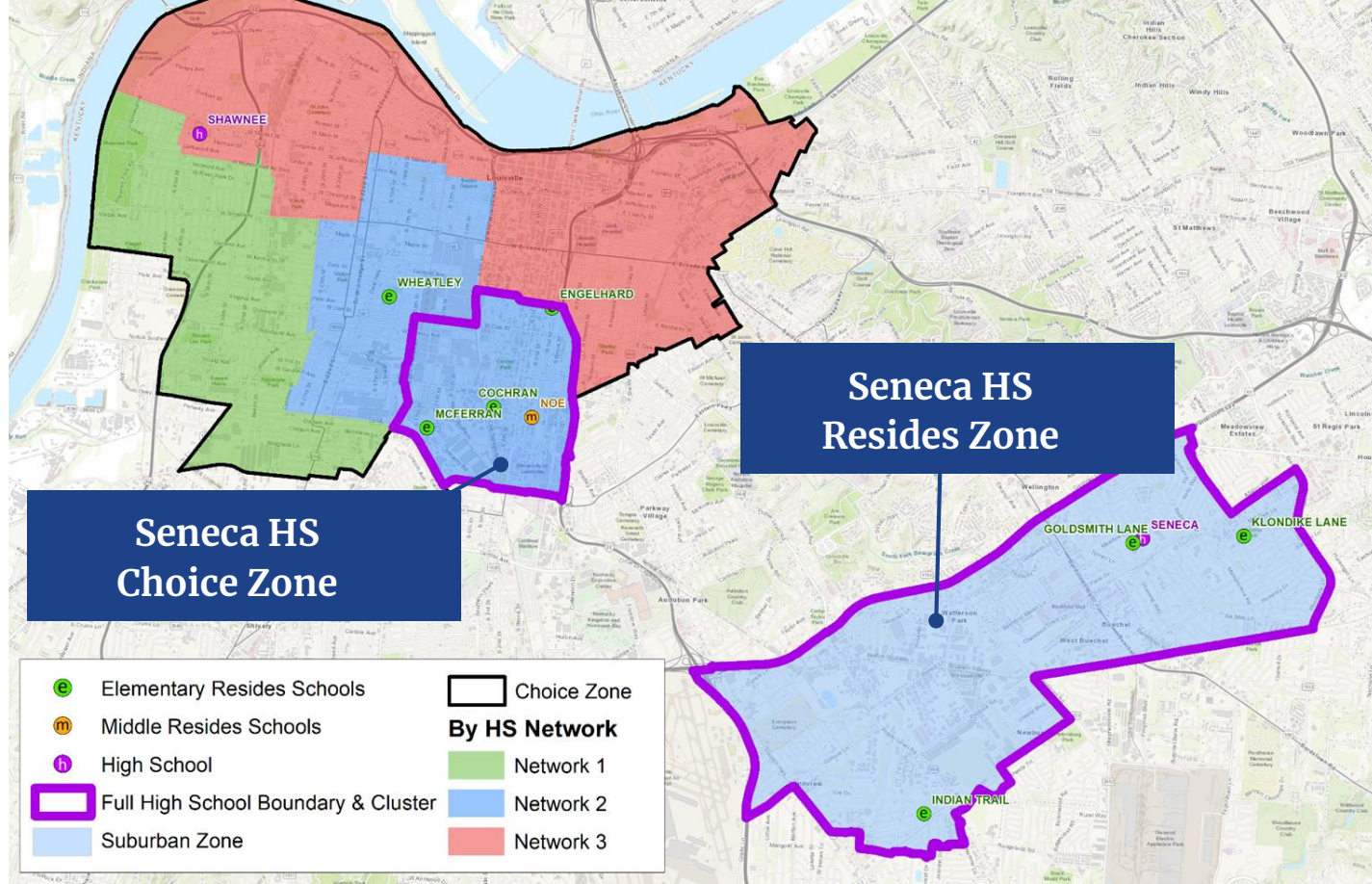


Consistency

Continuity

Choice

# Seneca High School



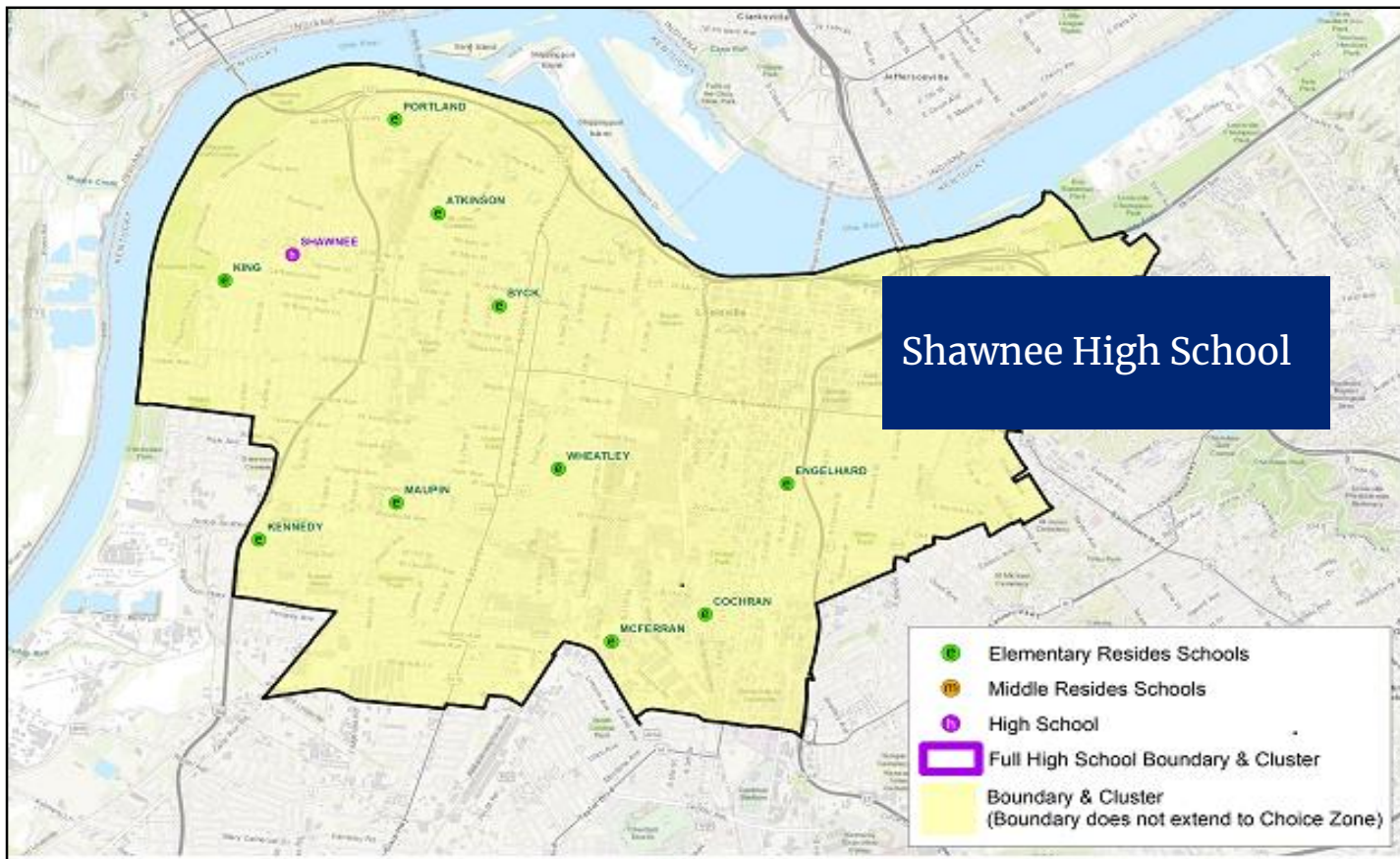


Consistency

Continuity

Choice

## Shawnee High School

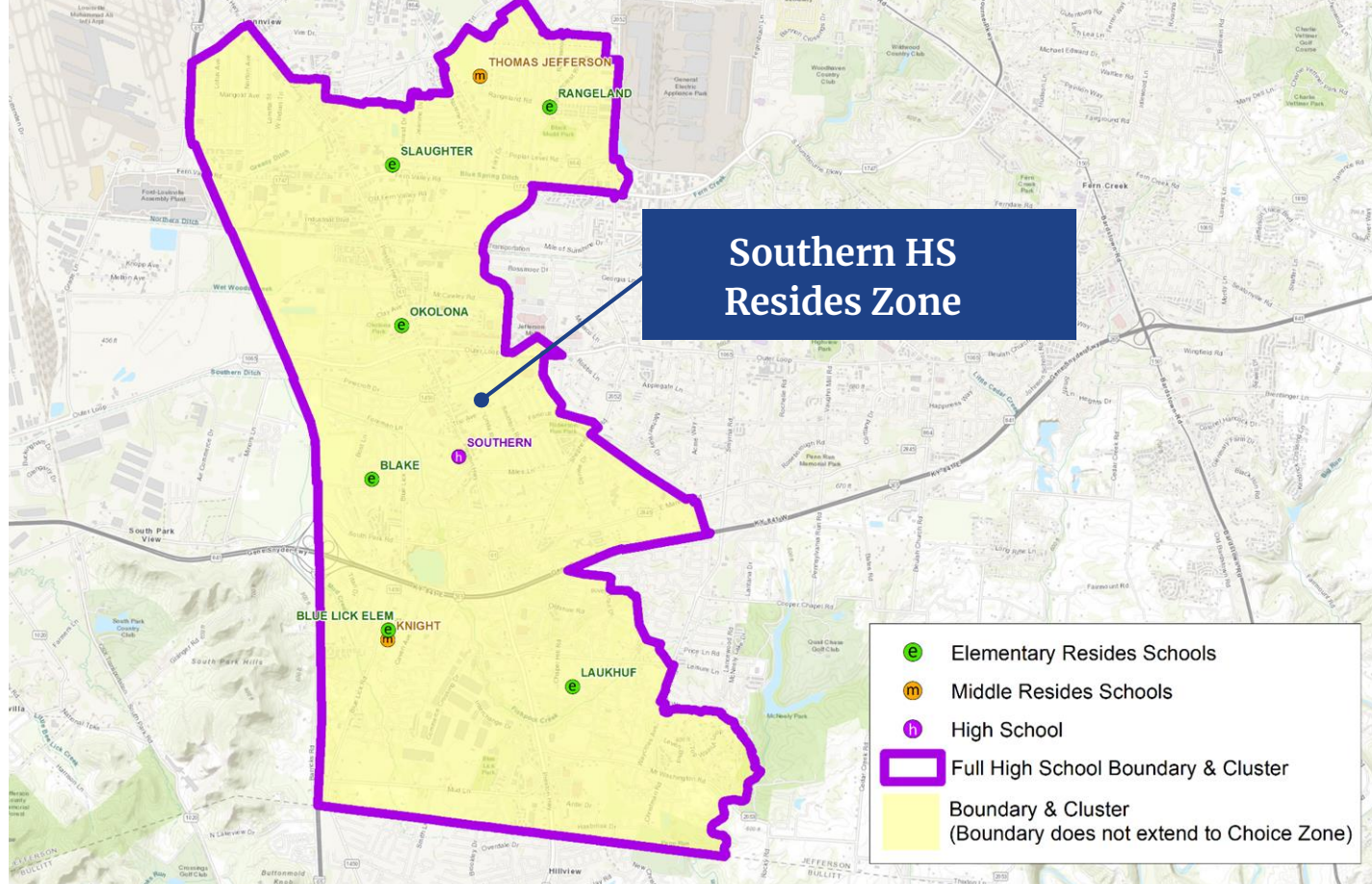


Consistency

Continuity

Choice

# Southern High School



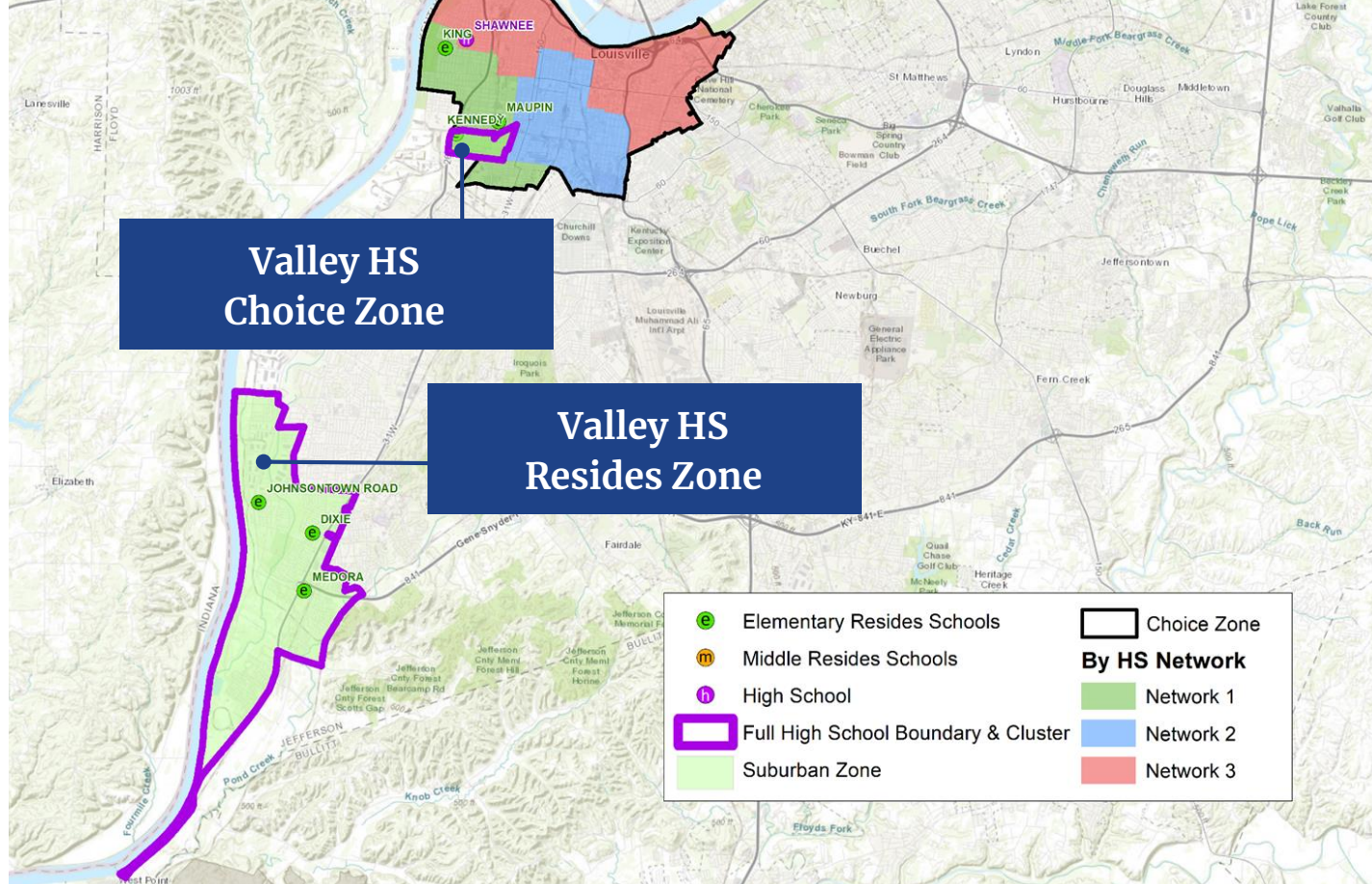


Consistency

Continuity

Choice

# Valley High School



Consistency

Continuity

Choice

# Waggener High School

