

Bullitt County Public Schools

1040 Highway 44 East
Shepherdsville, Kentucky 40165

Phone: 502-869-8000
Fax: 502-543-3608
www.bullittschools.org

TO: Dr. Jesse Bacon *JB*
FROM: Bret Highley
DATE: March 9, 2022 *BH*
RE: Change Order
New 800 Student Elementary School BG 20-142

At the May 23, 2016 Bullitt County School Board meeting, the Bullitt County School Superintendent was given the authority to approve a construction Change Order up to \$7,500.00 in cases to keep the project moving without delay. On March 4, 2022, Dr. Bacon approved Change Order #13. The total for this Change Order is \$887.70.

When layout started for the upper level restroom, the plumber found a conflict between the floor mounted toilet at the two ADA restroom stalls and the floor joist directly below. Moving the toilets is not possible without conflicting with clearances required by the ADA Building Code. BCPS Maintenance department has allowed the use of wall mounted toilet fixtures at these two areas. There is a cost increase of \$887.70. The total amount of construction contingency remaining after this CO request will be \$1,294,250.71.

If you have any questions please call me at 502-921-3659.

ATTACHMENTS:

- Redlee RFI #68 & SKA Response
- Redlee Construction Cost Breakdown
- AIA Change Order #13
- FAC PAC Change Order #13



800 Stonecreek Pkwy., Ste. 5A
Louisville, KY 40223
Phone 502-412-3777
Fax 502-412-7778

RECEIVED
02.22.2022

RETURNED
03.08.2022

Request for Information

Job No. 20-669

To: Studio Kremer Architects
1231 S. Shelby Street
Louisville, KY 40203

ATTN: Cate Noble Ward

Date: 2/22/2022
Re: RFI # 68
Job: BCPS
Old Mill Elementary

Subject: Upper Level Restrooms R101a/b Plumbing and Joist conflict

Please refer to 5/A4.1 and S1.2C. The sanitary lines for the following toilet fixtures and lavatories are in conflict with floor joists below:

1. Two ADA toilet fixtures (one in the Boys' Restroom and one in the Girls' Restroom).
2. Girls Restroom: second stall when entering the restroom.
3. All six lavatories.

The toilet fixture conflicts are based on being 18" off the wall. To clear the joists the fixture would need to shift approximately 5".

Please advise.

Thank you.

Response:

Per on site discussions with BCPS Construction and SKA held on 2-23-2022 - the toilets in the two (2) ADA stalls can be changed to a Wall Hung Type to avoid the joist conflict and need for reconfiguration of the restroom stalls. The lavatory wall at the Upper Level Restroom can shift plan west approximately 4-inches to avoid the joist below. - SKA

CC: File

SIGNED: Barry Clements
Barry Clements



February 28, 2022

Mrs. Cate Noble Ward
Studio Kremer Architects
1231 S. Shelby Street
Louisville, KY 40203

Re: Old Mill Elementary School
ADA wall hung fixtures

Cate,

Please see the following cost regarding providing (2) wall hung ADA toilet fixtures and carriers in the Boys/Girls Restrooms in Upper Level C. See quote attached.

Knights Mechanical		\$771.91
O/P		\$115.79
Total Cost		\$887.70

As always, please feel free to call with any questions you may have.

Respectfully,

Barry Clements

Barry Clements
Project Manager

Change Order

Subcontractor Name: KNIGHT'S MECHANICAL LLC.

Work Description: Change two floor mount water closets to wall hung

Project Name: Old Mill Elementary

Knight's Job # 201111

Cost Breakdown

Labor:

_____ = Man Hours @ 50 \$/Hour Labor Cost = \$0.00

Payroll Taxes & Insurance (32%) = \$0.00

Total Labor = \$0.00

Material:

Price Difference between water closets \$ 364.11 x 2 \$728.22

Material Sub Total = \$728.22

Material Tax = \$43.69

Total Material = \$771.91

Equipment:

_____ = Hours @ _____ \$/Hour Equipment Cost = \$0.00

Subcontractors:

Totals:

Labor =	<u>\$0.00</u>
Materials & Taxes =	<u>\$771.91</u>
Equipment =	<u>\$0.00</u>
Subcontractors =	<u>\$0.00</u>
Sub Total =	<u>\$771.91</u>
Total =	<u>\$771.91</u>
Change Order Price =	<u>\$771.91</u>



Afwall® Millennium™ FloWise® Elongated Flushometer Toilet

VITREOUS CHINA LESS EVERCLEAN®



Afwall® Millennium™ FloWise® Elongated Flushometer Toilet LESS EverClean®

- Wall-mounted flushometer valve toilet
- Vitreous china
- Conventional glaze
- High Efficiency, Low Consumption. Operates in the range of 1.1 gpf to 1.6 gpf (4.2 Lpf to 6.0 Lpf)
- Meets definition of HET (High Efficiency Toilet) when used with a high efficiency flush valve (1.1 gpf - 1.6 gpf or 1.28/1.1 gpf dual flush)
- Maximum Performance (MaP) score of 1,000 grams at 1.1 gpf - 1.6 gpf
- Condensation channel
- Concealed trapway design
- Elongated bowl
- Powerful direct-fed siphon jet action
- 1-1/2" inlet spud
- Fully-glazed 2-1/8" trapway
- 10" x 12" water surface area
- Tested to support static weight load of 1,000 lbs. (454 kg)

- ☐ **2257.101** Elongated bowl only, top spud
- ☐ **2633.101** Elongated bowl only, top spud with slotted rim for bedpan holding
- ☐ **2634.101** Elongated bowl only, back spud

System MaP* Score:

- 1,000 grams of miso @ 1.1 gpf to 1.6 gpf when used with an American Standard flush valve

* Maximum Performance (MaP) testing performed by IAPMO R&T Lab. MaP Report conducted by Veritec Consulting, Inc. and Koeller and Company.

Component Parts:

- ☐ **047007-0070A** Inlet Spud (furnished with bowl)

Nominal Dimensions:

660 x 356 x 381mm
(26" x 14" x 15")

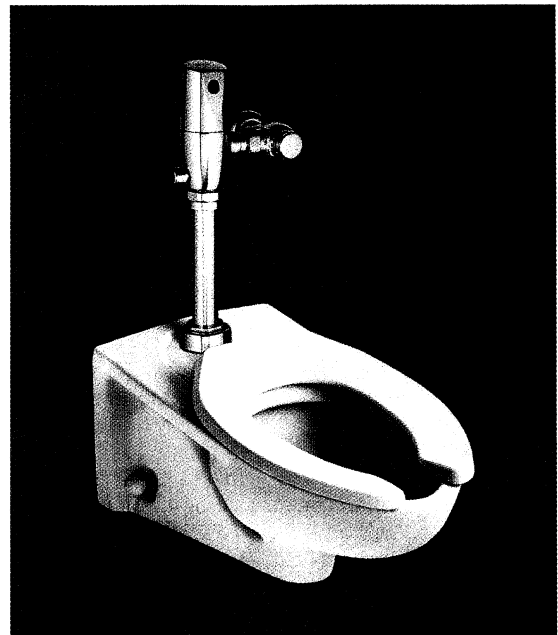
Recommended working pressure—between
25 psi at valve when flushing and 80 psi static

Fixture only, less seat, bolt caps, and
flushometer valve

Compliance Certifications -

Meets or Exceeds the Following Specifications:

- ASME A112.19.2/CSA B45.1 for Vitreous China Fixtures



SEE REVERSE FOR ROUGHING-IN DIMENSIONS

To Be Specified:

- ☐ Color: ☐ White
- ☐ Seat:
 - ☐ American Standard #5901.100 Heavy duty open front less cover
 - ☐ American Standard #5905.100 Extra heavy duty open front less cover
- ☐ Flushometer Valve:
 - ☐ 1.6 gpf:
 - ☐ Sensor-Operated: American Standard Selectronic® DC Power #6065.161.002 (Top Spud) AC Power #6067.161.002 (Top Spud)
 - ☐ Manual: American Standard #6047.161.002 (Top Spud)
 - ☐ 1.28 gpf:
 - ☐ Sensor-Operated: American Standard Selectronic® DC Power #6065.121.002 (Top Spud) AC Power #6067.121.002 (Top Spud)
 - ☐ Manual: American Standard #6047.121.002 (Top Spud)
 - ☐ 1.6 / 1.1 gpf Dual Flush:
 - ☐ Sensor-Operated: American Standard Selectronic® DC Power #6065.761.002 (Top Spud) AC Power #6067.761.002 (Top Spud)
 - ☐ 1.28 / 1.1 gpf Dual Flush:
 - ☐ Sensor-Operated: American Standard Selectronic® DC Power #6065.721.002 (Top Spud) AC Power #6067.721.002 (Top Spud)



MEETS THE AMERICANS WITH DISABILITIES ACT GUIDELINES
AND ANSI A117.1 REQUIREMENTS FOR ACCESSIBLE AND USABLE
BUILDING FACILITIES - CHECK LOCAL CODES.

- When installed so top of seat is 432 to 483mm (17" to 19") from the finished floor.



ENVIRONMENTAL
PRODUCT
DECLARATION



When used with
1.1 or 1.28 gpf
toilet flush valves

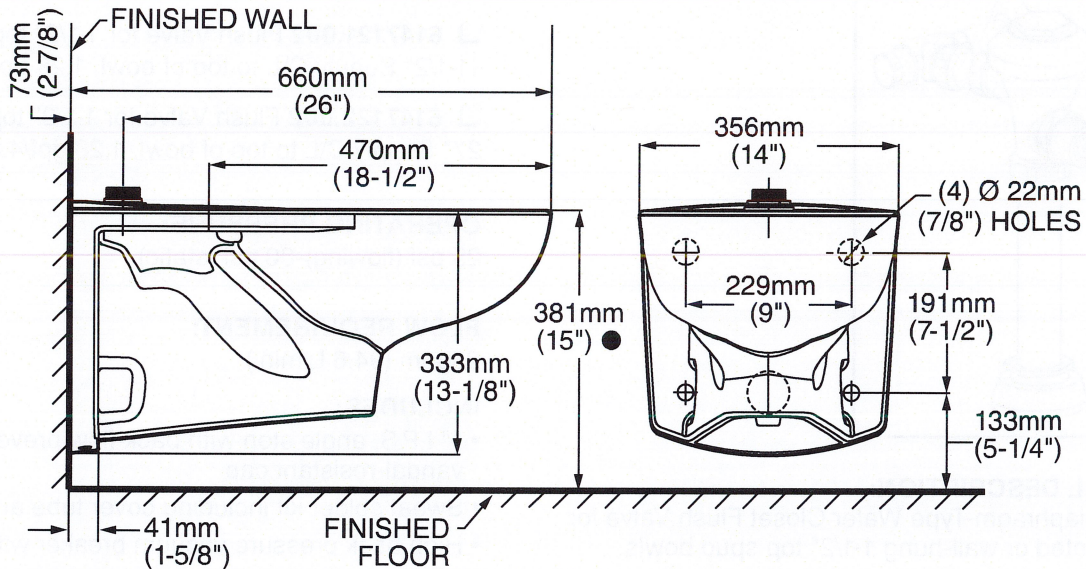


ADA
COMPLIANT

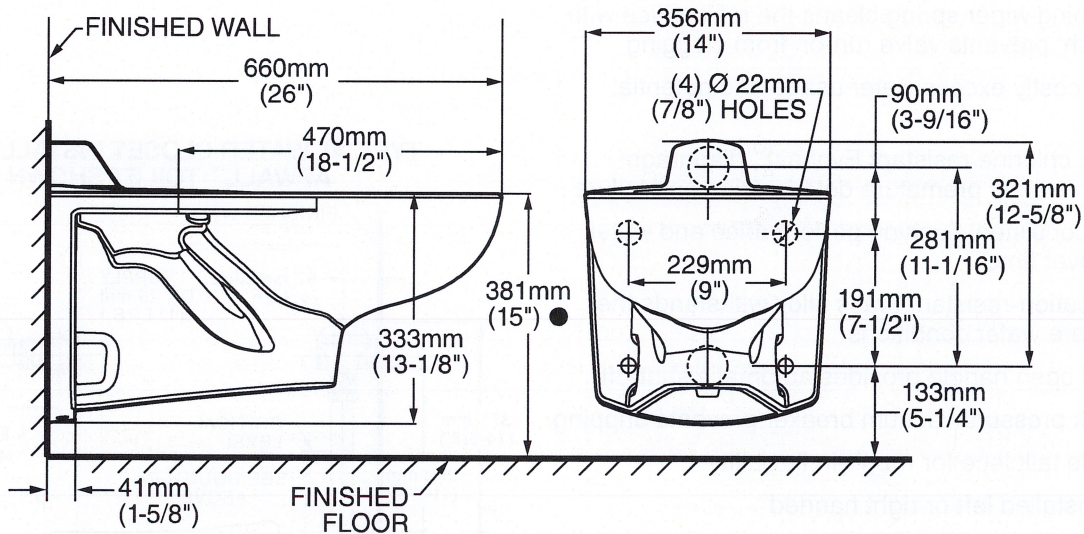


WATER
EFFICIENT

2257.101/2633.101



2634.101



NOTES:

● Toilet designed to meet ADA accessibility standards when top of seat height set at 432 to 483mm (17\" to 19\") from finished floor.

PRODUCT 2257 SHOWN, 2366 SAME EXCEPT WITH SLOTTED RIM FOR BED PAN HOLDING.

WASTE OUTLET SEAL RING MUST BE NEOPRENE OR GRAPHITE-FELT (WAX RING NOT RECOMMENDED).

SUGGESTED 2mm (1/16) CLEARANCE BETWEEN FACE OF WALL AND BACK OF BOWL.

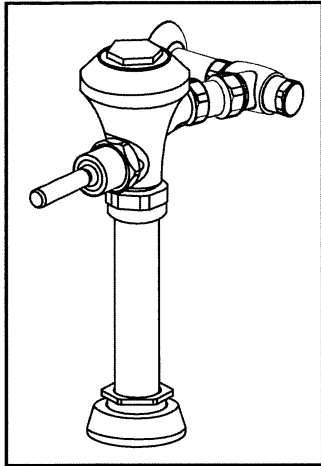
TO COMPLY WITH AREA CODE GOVERNING THE HEIGHT OF VACUUM BREAKER ON THE FLUSHOMETER VALVE, THE PLUMBER MUST VERIFY DIMENSIONS SHOWN FOR SUPPLY ROUGHING.

FLUSHOMETER VALVE NOT INCLUDED WITH FIXTURE AND MUST BE ORDERED SEPARATELY.

CARRIER FITTING AS REQUIRED TO BE FURNISHED BY OTHERS.

PROVIDE SUITABLE REINFORCEMENT FOR ALL WALL SUPPORT.

IMPORTANT: Dimensions of fixtures are nominal and may vary within the range of tolerances established by ANSI Standard A112.19.2. These measurements are subject to change or cancellation. No responsibility is assumed for use of superseded or voided pages



GENERAL DESCRIPTION:

Manual Diaphragm-Type Water Closet Flush Valve for floor-mounted or wall-hung 1-1/2" top spud bowls.

PRODUCT FEATURES:

- Patent-pending DynaClean™ wiper spring technology significantly reduces maintenance and downtime.
- Self-cleaning wiper spring cleans the refill orifice with every flush; prevents valve run-on from clogging
- Prevents costly excess water usage and potential flooding
- Premium, chlorine resistant EvoLast™ diaphragm material prevents premature deterioration and failure
- Delivers consistent flushing performance and water savings over time
- Dezincification-resistant brass alloy withstands the most severe water conditions
- Non-hold open handle provides automatic shut-off
- High back pressure vacuum breaker prevents dripping
- Adjustable tailpiece for rough-in flexibility
- Can be installed left or right handed
- No external volume adjustment
- ADA complaint

MODEL NUMBER:

- ❑ **6147121.002** Flush Valve for 1-1/2" top spud bowl, 11-1/2" Supply C\L to top of bowl, 1.28 gpf/4.8 Lpf
- ❑ **6147122.002** Flush Valve for 1-1/2" top spud bowl, 27" Supply C\L to top of bowl, 1.28 gpf/4.8 Lpf

OPERATING PRESSURE:

25 psi (flowing)-80 psi (static)

FLOW REQUIREMENT:

25gpm (94.6 L/min.)

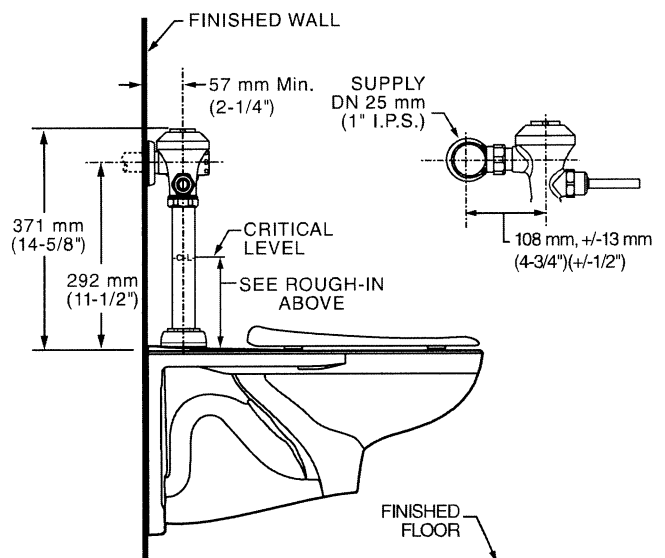
INCLUDES:

- 1" I.P.S. angle stop with back-flow prevention and vandal-resistant cap
- Sweat solder kit including cover tube and wall flange
- High back pressure vacuum breaker with down tube
- Spud coupling & flange for 1-1/2" top spud

ACCESSORIES:

- Split ring pipe supports (2-1/2" & 6" C-E)

**TYPICAL WATER CLOSET INSTALLATION:
AFWALL™ TOILET SHOWN**



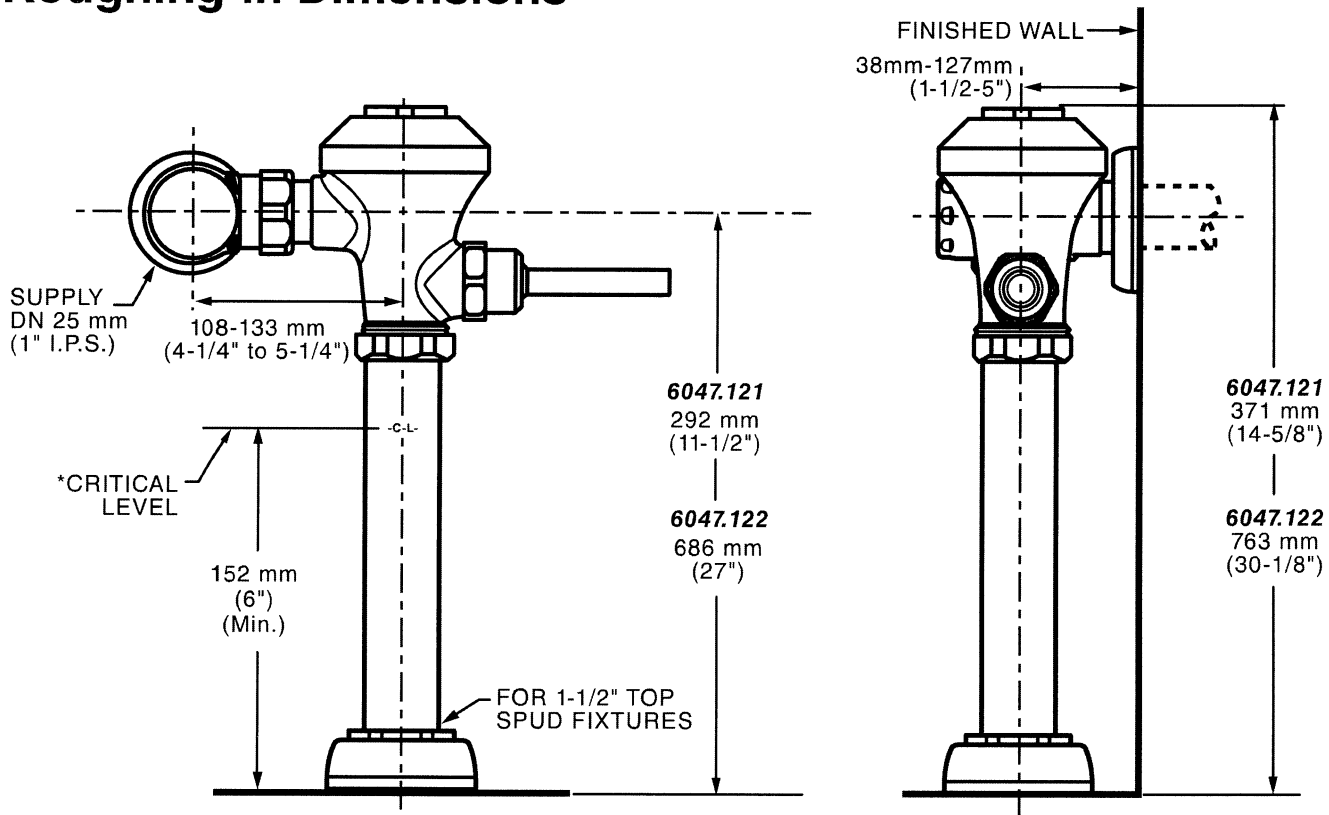
RECOMMENDED SPECIFICATION:

Manual toilet flush valve shall feature self-cleaning diaphragm valve with integral DynaClean wiper spring in bypass orifice to prevent clogging. Advanced EvoLast diaphragm provides superior chlorine-resistance. Includes dezincification-resistant cast brass valve body with chrome finish. Includes sweat solder kit with wall flange and cover tube. Angle stop with back-flow protection and vandal-resistant stop cap. High back pressure vacuum breaker included. 1.28 gpf / 4.8 Lpf Flush valve shall be American Standard Model # 6147.12 .002.

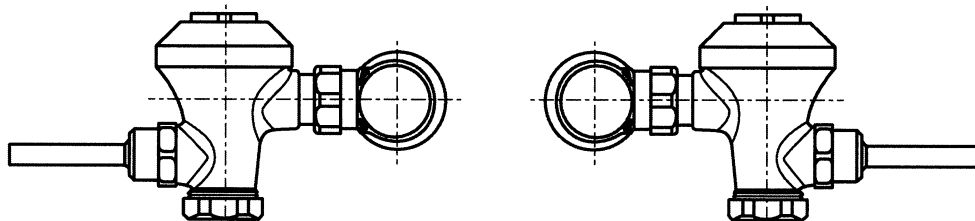
LISTINGS:

- ASSE 1037
- ANSI/ASME A112.19.2
- ADA Compliant

Roughing-in Dimensions



*Note: The Critical Line (-C-L-) on Vacuum Breaker must typically be a minimum of 6" (152 mm) above fixture. Consult Codes for details.

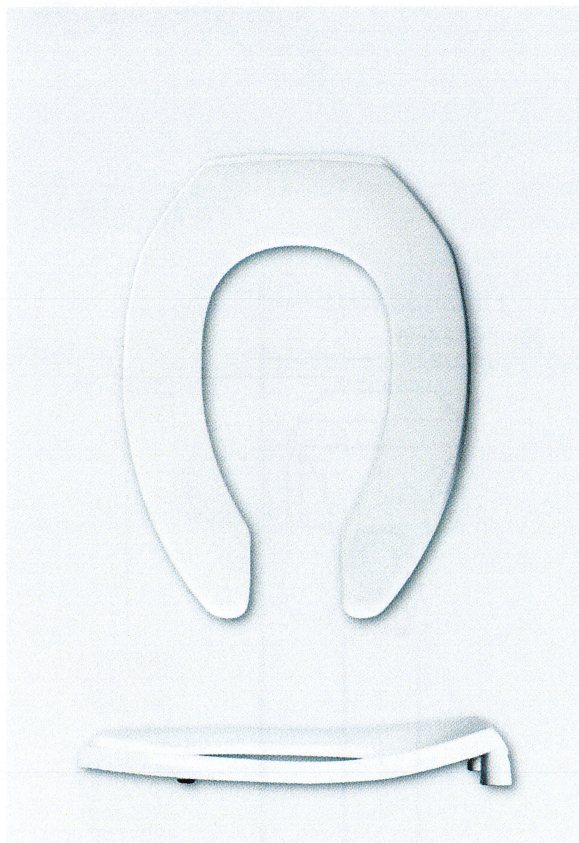


Left or Right Hand Installation



2155CT / 2155SSCT

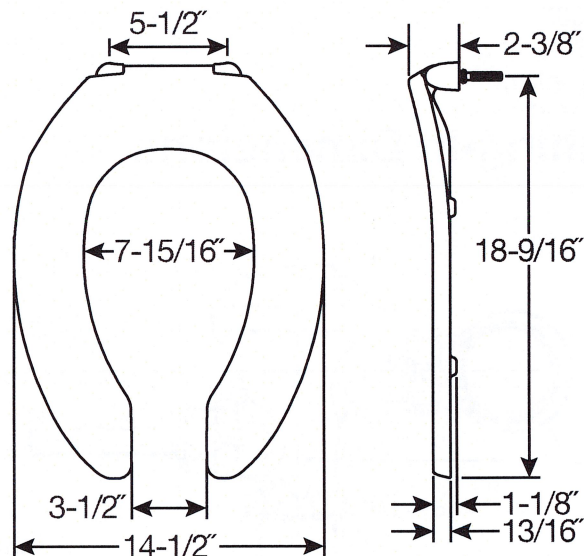
COMMERCIAL HEAVY-DUTY
PLASTIC TOILET SEAT



FEATURES:

- **STA-TITE®**
Commercial Fastening System™
Eliminates callbacks for loosened seats
- **DuraGuard® Antimicrobial ***
Built-In Seat Protection™

** DuraGuard Antimicrobial does not protect users against bacteria, viruses, or other disease organisms. Always clean and wash this product thoroughly before and after each use.*



SPECIFICATIONS:

Size: Elongated

Material: Plastic

Style: Open Front less Cover

Ring Bumpers: Four

Hinges: Plastic Non Self-Sustaining Check Hinge (2155CT) or Self-Sustaining Check Hinge (2155SSCT) with Non-Corroding 300 Series Stainless Steel Posts and Pintles

Hardware: STA-TITE® Commercial Fastening System™

Codes & Standards:



Complies with
IAPMO/ANSI Z124.5
Performance Standards
Heavy-Duty Commercial



Proudly Made in the USA

Eco-Friendly



FACPAC Contract Change Order Supplemental Information Form (Ref# 55987)

Form Status: Saved

Tier 1 Project: 800 Student Elementary School

BG Number: 20-142

District: Bullitt County (071)

Status: Active

Phase: Project Initiation (View Checklist)

Contract: Redlee Construction & Development, Inc. , 0001, General Construction

Type: General Contractor

Proposed

Change Order Number	13
Time Extension Required	No
Date Of Change Order	3/7/2022
Change Order Amount To Date	Increase

Construction Contingency

Calculations below are project wide. Remaining negative Construction Contingency may require the submission of a revised BG1.

Current Approved Amount	\$1,402,905.14
Net Approved COs	\$100,021.02
Remaining After Approved COs	\$1,302,884.12
Net All COs	\$108,654.43
Remaining After All COs	\$1,294,250.71

This Requested Change Order Amount \$887.70

+/-

Change In A/E Fee This Change Order \$46.16

+/-

Change In CM Fee This Change Order \$0.00

+/-

Remaining Construction Contingency \$1,294,250.71

Balance

Contract Change Requested By Architect/Engineer; General Contractor; BCPS
Construction

Contract Change Reason Code Conflict with building construction.

Change Order Description And Justification

When layout on the upper level public restroom, the plumber found a conflict between the floor mounted toilet at the two (2) ADA restroom stalls and the floor joists directly below. Moving the toilets was not possible without conflicting with the clearances required by the Accessibility Building Code. BCPS allowed for the use of wall mounted toilet fixtures in lieu of the floor mounted to avoid a reconfiguration of the space or losing one of the toilet/urinal stalls. There is cost increase associated with a wall hung toilet and the carrier versus a floor-set toilet. The handicap accessible stalls can remain as designed and code compliant.

Cost Benefit To Owner

Work can commence with trades already on site without the need to uninstall completed work.

Contract unit prices have been utilized No
to support the cost associated with this
change order.

Detailed Cost Breakdown

Contract unit prices have not been utilized, provide a detailed cost breakdown which separates labor, material, profit and overhead.

Detail Item	Amount	Percent of Total
Labor	\$0.00	0.00%
Materials	\$771.91	86.96%
Profit and Overhead	\$115.79	13.04%
Bond Insurance	\$0.00	0.00%
Cost Breakdown Total:	\$887.70	

Cost for this Change Order supported by an alternate bid or competitive price quote

Explain Why

Costs were provided by trades/suppliers already contracted to perform work without the need for additional overhead and profit, general conditions or schedule coordination.

Change Order Supplemental Information Form Signature
Page (Online Form Ref# 55987)


Architect

03-07-2022

Date

N/A

Construction Manager

Date

Finance Officer

Date

Local Board of Education Designee

Date



AIA® Document G701™ – 2017

Change Order

PROJECT: (Name and address) New BCPS Elementary School - 800- Student 199 Golden Wing Road	CONTRACT INFORMATION: Contract For: General Construction Date: November 09, 2020	CHANGE ORDER INFORMATION: Change Order Number: 013 Date: 3-8-2022
OWNER: (Name and address) Bullitt County Public Schools 1040 Hwy 44 East Shepherdsville, KY 40165	ARCHITECT: (Name and address) Studio Kremer Architects 1231 S. Shelby Street Louisville, KY 40203	CONTRACTOR: (Name and address) Redlee Construction & Development, Inc. 800 Stonecreek Pkwy, Suite 5A Louisville, KY 40223

THE CONTRACT IS CHANGED AS FOLLOWS:

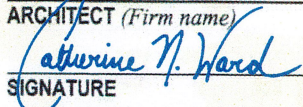
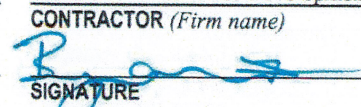
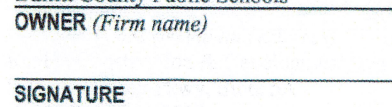
(Insert a detailed description of the change and, if applicable, attach or reference specific exhibits. Also include agreed upon adjustments attributable to executed Construction Change Directives.)

See attached Redlee Change Order Request for cost increase for two (2) wall hung ADA accessible toilet fixtures.

The original Contract Sum was	\$ 12,647,841.73
The net change by previously authorized Change Orders	\$ 56,823.33
The Contract Sum prior to this Change Order was	\$ 12,704,665.06
The Contract Sum will be increased by this Change Order in the amount of	\$ 887.70
The new Contract Sum including this Change Order will be	\$ 12,705,552.76
The Contract Time will be increased by Zero (0) days.	
The new date of Substantial Completion will be	

NOTE: This Change Order does not include adjustments to the Contract Sum or Guaranteed Maximum Price, or the Contract Time, that have been authorized by Construction Change Directive until the cost and time have been agreed upon by both the Owner and Contractor, in which case a Change Order is executed to supersede the Construction Change Directive.

NOT VALID UNTIL SIGNED BY THE ARCHITECT, CONTRACTOR AND OWNER.

Studio Kremer Architects ARCHITECT (Firm name)	Redlee Construction & Development, Inc. CONTRACTOR (Firm name)	Bullitt County Public Schools OWNER (Firm name)
 SIGNATURE	 SIGNATURE	 SIGNATURE
Catherine Noble Ward, AIA PRINTED NAME AND TITLE	Barry Clements, Project Manager PRINTED NAME AND TITLE	Dr. Jesse Bacon, Superintendent PRINTED NAME AND TITLE
03-08-2022 DATE	3.7.2022 DATE	 DATE