

CA Report

Audit #	150	Summary	
Audit Type	Comprehensive	Audit Status	Waiting for QA/QC
Assigned Group	Tate Hill Jacobs Architects, Inc	Assigned To	Margaret-Jacobs
Provider		Action Data Source	Audit 2019
Scheduled Date		Date Completed	

Huntertown Elementary School (Facility)



Address	120 Woodburn Hall Drive
School District	Woodford County
ModelType	School Facility
Size	61,543 Sq.Ft.
Construction Year	1981
Template	Elementary School

Description Original construction of approximately 53,143 GSF was completed in 1981 for use as an elementary school. The building has been in continuous use since that date as an elementary school. HVAC systems were replaced in 2008. The new HVAC system is water source heat pumps. The heat pumps are located on a continuous concrete mezzanine located above the corridor system. Web-based Automated Logic HVAC controls were also installed at this time. The original school did not have a dedicated Gymnasium. The current cafeteria was utilized for both a gym and cafeteria until 1981. In 1981 an 8,400 GSF addition was constructed. The addition includes a Gym, PE office, restroom and shower, storage areas and public lobby. The building is constructed on a single level. The surrounding site is relatively flat. The original school configuration is rectilinear with an exterior courtyard in the center. The addition was constructed as an appendage and connects to the primary corridor system on the west side of the building. The original building roofs are sloped with a 4:12 pitch with asphalt shingles and perimeter gutters. The additions are low slope roofs with single ply white, TPO membrane roofing systems. Building Construction includes brick veneer on load bearing concrete masonry exterior walls with concrete masonry unit interior load bearing and non-load bearing partition walls and concrete floor slabs on grade on the lower level and concrete floor on steel joists & metal floor deck on the upper level. Roof structure is steel bar joist and metal roof decking. The 1991 addition includes exterior metal wall panels on the exterior envelope at higher elevations.

Condition Summary

General Summary

At the time of the Audit in 2020 this Elementary School was in good, serviceable condition.

Architectural Summary

The exterior masonry and metal wall panels are in good condition. Exterior doors and windows of the original 1981 building were replaced in 2008, they are in very good condition. Asphalt shingle roofing, gutters and downspouts were replaced in 1981 when the addition was constructed, they are in good condition. Low slope roofs associated with the 2008 are white, firestone TPO; these roof areas are in good condition. Interior doors located in the 1981 portion of the building are original, hardware was updated in 2008. Doors and hardware are in good condition. Interior finishes and overall aesthetic conditions are pleasing and well maintained.

Mechanical Summary

The building is equipped with 100% code compliant fire suppression system
Plumbing systems are in good condition.
Water heaters were replaced in 2008.
HVAC systems were replaced in 2008.
The current HVAC system is water source geothermal heat pump. Hydronic piping and pumps are in good condition.

Electrical Summary

ELECTRICAL SUMMARY

Primary switchgear is Westinghouse and dates back to original construction.
Branch panels, conduit, and raceways in the original building were installed in 1981.
Most electrical wiring was updated and/or replaced during the renovation of 2008.
All lighting in the original 1981 portion of the building was replaced in 2008; most fixtures are T5 fluorescent.
LED lighting has been installed in the Gym.
All exterior pole lighting in LED.
All lighting is controlled for energy efficiency.
Voice, data, and video cabling is well maintained.
Security systems include closed caption video, card access at select exterior doors and Aiphone system in the secure entry vestibule

Facility Custom Details

Elements by Category**A10 - Foundations [1]**

Discipline	Substructure
Category	A10 - Foundations
Element Number	1
Maintenance Type	Reactive
Replacement Cost	\$700,956
Last Major Action	1981
Location/Name	Substructure
Brief Description	steel reinforced cast-in-place concrete footings and stem walls.
Overall Condition	■ Good
Commentary	

Pictures

E-15769-20200512165409.jpg

Custom Details**Actions****A10 - Foundations [1]**

Discipline	Substructure
Category	A10 - Foundations
Element Number	1
Maintenance Type	Reactive
Replacement Cost	\$110,796
Last Major Action	2008
Location/Name	Substructure
Brief Description	steel reinforced cast-in-place concrete footings and stem walls.
Overall Condition	■ Good
Commentary	

Pictures

E-15770-20200512165450.jpg

Custom Details**Actions****B10 - Superstructure [1]**

Discipline	Shell
Category	B10 - Superstructure
Element Number	1
Maintenance Type	Reactive
Replacement Cost	\$731,248
Last Major Action	1981
Location/Name	Superstructure
Brief Description	cast-in-place concrete floor slab on grade, masonry cavity walls with load bearing CMU interior walls, concrete on metal deck over steel bar joist with metal deck roof structure.
Overall Condition	■ Good
Commentary	

Pictures

E-15771-20200512125809.jpg

E-15771-20200512160024.jpg

Custom Details**Actions**

B10 - Superstructure [1]

Discipline	Shell
Category	B10 - Superstructure
Element Number	1
Maintenance Type	Reactive
Replacement Cost	\$115,584
Last Major Action	2008
Location/Name	Superstructure
Brief Description	cast-in-place concrete floor slab on grade, masonry cavity walls with load bearing CMU interior walls, concrete on metal deck over steel bar joist with metal deck roof structure.
Overall Condition	■ Good
Commentary	

Pictures

E-15772-20200512144633.jpg



E-15772-20200512161453.jpg

E-15772-20200512135158.jpg

Custom Details**Actions****B2010 - Exterior Walls [1]**

Discipline	Shell
Category	B2010 - Exterior Walls
Element Number	1
Maintenance Type	Reactive
Replacement Cost	\$1,530,518
Last Major Action	1981
Location/Name	Exterior
Brief Description	Brick veneer over rigid insulation on concrete masonry units with interior paint finish
Overall Condition	■ Good
Commentary	

Pictures



E-15773-20200512141519.jpg



E-15773-20200512170140.jpg



E-15773-20200512170311.jpg



E-15773-20200512170824.jpg

Custom Details

Actions

Action Summary:

Repair

Action Type

Repair

Life Safety / Code Related?

No

Adverse Effect on Security?

No

Risk of building shut down?

No

Accessibility Related?

No

Urgency of Action?

Low

Operation / Energy Savings?

N/A

Status

Not Specified

Funding Source

Cost

\$153,052

Year

2020

Repeat Interval

38

Action: Commentary

B2010 - Exterior Walls [1]

Discipline

Shell

Category

B2010 - Exterior Walls

Element Number

1

Maintenance Type

Reactive

Replacement Cost

\$241,920

Last Major Action

2008

Location/Name

Exterior

Brief Description

Brick veneer and metal wall panels over rigid insulation on load bearing masonry units with interior paint finish

Overall Condition

■ Good

Commentary

Pictures

E-15774-20200512142744.jpg



E-15774-20200512142654.jpg



E-15774-20200512143352.jpg



E-15774-20200512165542.jpg

Custom Details**Actions****Action Summary:**

Repair

Action Type

Repair

Life Safety / Code Related?

No

Adverse Effect on Security?

No

Risk of building shut down?

No

Accessibility Related?

No

Urgency of Action?

Low

Operation / Energy Savings?

N/A

Status

Not Specified

Funding Source**Cost**

\$24,192

Year

2046

Repeat Interval

38

Action: Commentary**B2020 - Exterior Windows [1]****Discipline**

Shell

Category

B2020 - Exterior Windows

Element Number

1

Maintenance Type

Reactive

Replacement Cost

\$338,627

Last Major Action

2008

Location/Name

Exterior

Brief Description

Aluminum framed with clear insulated glass and project out operable sash.

Overall Condition■ Good**Commentary**

Pictures

E-15775-20200512141539.jpg



E-15775-20200512162936.jpg

Custom Details**Actions****Action Summary:** Replace

Action Type	Replacement
Life Safety / Code Related?	No
Adverse Effect on Security?	No
Risk of building shut down?	No
Accessibility Related?	No
Urgency of Action?	Low
Operation / Energy Savings?	N/A
Status	Not Specified
Funding Source	
Cost	\$338,627
Year	2038
Repeat Interval	30
Action: Commentary	

B2020 - Exterior Windows [1]

Discipline	Shell
Category	B2020 - Exterior Windows
Element Number	1
Maintenance Type	Reactive
Replacement Cost	\$53,525
Last Major Action	2008
Location/Name	Exterior
Brief Description	Aluminum framed with clear insulated glass and project out operable sash
Overall Condition	■ Good
Commentary	

Pictures

E-15776-20200512142811.jpg



E-15776-20200512142819.jpg



E-15776-20200512145702.jpg

Custom Details**Actions****Action Summary:** Replace

Action Type	Replacement
Life Safety / Code Related?	No
Adverse Effect on Security?	No
Risk of building shut down?	No
Accessibility Related?	No
Urgency of Action?	Low
Operation / Energy Savings?	N/A
Status	Not Specified
Funding Source	
Cost	\$53,525
Year	2038
Repeat Interval	30
Action: Commentary	

B2030 - Exterior Doors [1]

Discipline	Shell
Category	B2030 - Exterior Doors
Element Number	1
Maintenance Type	Reactive
Replacement Cost	\$121,804
Last Major Action	2008
Location/Name	Exterior
Brief Description	Aluminum storefront and insulated hollow metal.
Overall Condition	■ Good
Commentary	

Pictures

E-15777-20200512132442.jpg



E-15777-20200512132456.jpg



E-15777-20200512154745.jpg

Custom Details**Actions****Action Summary:** Replace

Action Type	Replacement
Life Safety / Code Related?	No
Adverse Effect on Security?	No
Risk of building shut down?	No
Accessibility Related?	No
Urgency of Action?	Low
Operation / Energy Savings?	N/A
Status	Not Specified
Funding Source	
Cost	\$121,804
Year	2038
Repeat Interval	30
Action: Commentary	

B2030 - Exterior Doors [1]

Discipline	Shell
Category	B2030 - Exterior Doors
Element Number	1
Maintenance Type	Reactive
Replacement Cost	\$19,253
Last Major Action	2008
Location/Name	Exterior
Brief Description	Aluminum storefront and insulated hollow metal
Overall Condition	■ Good
Commentary	

Pictures

E-15778-20200512165603.jpg

Custom Details**Actions**

Action Summary:	Replace
Action Type	Replacement
Life Safety / Code Related?	No
Adverse Effect on Security?	No
Risk of building shut down?	No
Accessibility Related?	No
Urgency of Action?	Low
Operation / Energy Savings?	N/A
Status	Not Specified
Funding Source	
Cost	\$19,253
Year	2038
Repeat Interval	30
Action: Commentary	

B30 - Roofing [1]

Discipline	Shell
Category	B30 - Roofing
Element Number	1
Maintenance Type	Reactive
Replacement Cost	\$465,612
Last Major Action	2008
Location/Name	Roof
Brief Description	Asphalt shingles on 4:12 sloped roofs
Overall Condition	■ Good
Commentary	

Pictures

E-15781-20200512141047.jpg



E-15781-20200512140624.jpg



E-15781-20200512141042.jpg



E-15781-20200512140954.jpg

Custom Details**Actions****Action Summary:** Replace**Action Type** Replacement**Life Safety / Code Related?** No**Adverse Effect on Security?** No**Risk of building shut down?** No**Accessibility Related?** No**Urgency of Action?** Low**Operation / Energy Savings?** N/A**Status** Not Specified**Funding Source****Cost** \$465,612**Year** 2038**Repeat Interval** 20**Action: Commentary****B30 - Roofing [1]**

Discipline	Shell
Category	B30 - Roofing
Element Number	1
Maintenance Type	Reactive
Replacement Cost	\$73,597
Last Major Action	2008
Location/Name	Roof
Brief Description	Firestone TPO membrane roofing
Overall Condition	■ Good
Commentary	

Pictures**Custom Details**

Actions**Action Summary:** Replace

Action Type	Replacement
Life Safety / Code Related?	No
Adverse Effect on Security?	No
Risk of building shut down?	No
Accessibility Related?	No
Urgency of Action?	Low
Operation / Energy Savings?	N/A
Status	Not Specified
Funding Source	
Cost	\$73,597
Year	2028
Repeat Interval	20
Action: Commentary	

C1010 - Partitions [1]

Discipline	Interiors
Category	C1010 - Partitions
Element Number	1
Maintenance Type	Reactive
Replacement Cost	\$469,997
Last Major Action	1981
Location/Name	Interior
Brief Description	8" nominal concrete masonry units laid in stacked bond with paint finish
Overall Condition	■ Good
Commentary	

Pictures

E-15785-20200512155307.jpg



E-15785-20200512162123.jpg

Custom Details**Actions**

C1010 - Partitions [1]

Discipline	Interiors
Category	C1010 - Partitions
Element Number	1
Maintenance Type	Reactive
Replacement Cost	\$74,290
Last Major Action	2008
Location/Name	Interior
Brief Description	8" nominal concrete masonry units laid in stacked bond with paint finish
Overall Condition	■ Good
Commentary	

Pictures

E-15786-20200512135252.jpg



E-15786-20200512144546.jpg

Custom Details**Actions****C1020 - Fittings [1]**

Discipline	Interiors
Category	C1020 - Fittings
Element Number	1
Maintenance Type	Reactive
Replacement Cost	\$555,929
Last Major Action	2008
Location/Name	Interior
Brief Description	Media Center: wood book shelves, upholstered wood chairs, wood tables, wood study carrels, circulation desk casework. Classrooms: student cubbies, plastic laminate casework, white marker boards and cork tackboards. Restrooms: Plastic toilet partitions
Overall Condition	■ Good
Commentary	

Pictures



E-15787-20200512162045.jpg



E-15787-20200512162817.jpg



E-15787-20200512163718.jpg



E-15787-20200512162059.jpg

Custom Details

Actions

Action Summary: Replace

Action Type Replacement

Life Safety / Code Related? No

Adverse Effect on Security? No

Risk of building shut down? No

Accessibility Related? No

Urgency of Action? Low

Operation / Energy Savings? N/A

Status Not Specified

Funding Source

Cost \$555,929

Year 2038

Repeat Interval 30

Action: Commentary

C1020 - Fittings [1]

Discipline Interiors

Category C1020 - Fittings

Element Number 1

Maintenance Type Reactive

Replacement Cost \$87,872

Last Major Action 2008

Location/Name Interior

Brief Description GYM: basketball goals, telescoping bleachers.
Media Center Addition: Wood shelving, chairs and tables.

Overall Condition ■ Good

Commentary

Pictures

E-15788-20200512144604.jpg



E-15788-20200512144932.jpg



E-15788-20200512144800.jpg



E-15788-20200512162802.jpg

Custom Details**Actions****Action Summary:** Replace

Action Type	Replacement
Life Safety / Code Related?	No
Adverse Effect on Security?	No
Risk of building shut down?	No
Accessibility Related?	No
Urgency of Action?	Low
Operation / Energy Savings?	N/A
Status	Not Specified
Funding Source	
Cost	\$87,872
Year	2038
Repeat Interval	30
Action: Commentary	

C1030 - Interior Doors [1]

Discipline	Interiors
Category	C1030 - Interior Doors
Element Number	1
Maintenance Type	Reactive
Replacement Cost	\$218,099
Last Major Action	2008
Location/Name	Interior
Brief Description	Natural finish wood veneer and some painted hollow metal
Overall Condition	■ Good
Commentary	

Pictures



E-15837-20200512162004.jpg



E-15837-20200512162409.jpg



E-15837-20200512164028.jpg

Custom Details

Actions

Action Summary: Replace

Action Type	Replacement
Life Safety / Code Related?	No
Adverse Effect on Security?	No
Risk of building shut down?	No
Accessibility Related?	No
Urgency of Action?	Low
Operation / Energy Savings?	N/A
Status	Not Specified
Funding Source	
Cost	\$218,099
Year	2038
Repeat Interval	30
Action: Commentary	

C1030 - Interior Doors [1]

Discipline	Interiors
Category	C1030 - Interior Doors
Element Number	1
Maintenance Type	Reactive
Replacement Cost	\$34,474
Last Major Action	2008
Location/Name	Interior
Brief Description	Natural finish wood veneer.
Overall Condition	<div style="display: inline-block; width: 10px; height: 10px; background-color: green; margin-right: 5px;"></div> Good
Commentary	

Pictures



E-15838-20200512144526.jpg



E-15838-20200512145357.jpg



E-15838-20200512144510.jpg

Custom Details

Actions

Action Summary: Replace

Action Type	Replacement
Life Safety / Code Related?	No
Adverse Effect on Security?	No
Risk of building shut down?	No
Accessibility Related?	No
Urgency of Action?	Low
Operation / Energy Savings?	N/A
Status	Not Specified
Funding Source	
Cost	\$34,474
Year	2038
Repeat Interval	30
Action: Commentary	

C20 - Stairs [1]

Discipline	Interiors
Category	C20 - Stairs
Element Number	1
Maintenance Type	Reactive
Replacement Cost	\$154,752
Last Major Action	1981
Location/Name	Interior
Brief Description	The only stairs are the ladders associated with access to the upper level mezzanine
Overall Condition	<div style="display: flex; align-items: center;"> <div style="width: 10px; height: 10px; background-color: green; margin-right: 5px;"></div> Good </div>
Commentary	There is only a steel ship ladder - it is expected to remain in good condition for 50+ years

Pictures

E-15789-20200512161653.jpg

Custom Details**Actions**[Action Summary:](#) Repair

Action Type	Repair
Life Safety / Code Related?	No
Adverse Effect on Security?	No
Risk of building shut down?	No
Accessibility Related?	No
Urgency of Action?	Low
Operation / Energy Savings?	N/A
Status	Not Specified
Funding Source	
Cost	\$15,475
Year	2031
Repeat Interval	38
Action: Commentary	

C20 - Stairs [1]

Discipline	Interiors
Category	C20 - Stairs
Element Number	1
Maintenance Type	Reactive
Replacement Cost	\$24,461
Last Major Action	2008
Location/Name	Interior
Brief Description	The only stair in the addition is the ladder associated with access to the upper level mezzanine.
Overall Condition	■ Good
Commentary	

Pictures

E-15790-20200512135705.jpg

E-15790-20200512135228.jpg

Custom Details**Actions****Action Summary:** Repair

Action Type	Repair
Life Safety / Code Related?	No
Adverse Effect on Security?	No
Risk of building shut down?	No
Accessibility Related?	No
Urgency of Action?	Low
Operation / Energy Savings?	N/A
Status	Not Specified
Funding Source	
Cost	\$2,446
Year	2046
Repeat Interval	38
Action: Commentary	

C3010 - Wall Finishes [1]

Discipline	Interiors
Category	C3010 - Wall Finishes
Element Number	1
Maintenance Type	Reactive
Replacement Cost	\$204,601
Last Major Action	2008
Location/Name	Interior
Brief Description	Painted wall finish.
Overall Condition	■ Good
Commentary	

Pictures

E-15839-20200512132332.jpg



E-15839-20200512162204.jpg



E-15839-20200512163322.jpg

Custom Details**Actions****Action Summary:** Replace

Action Type	Replacement
Life Safety / Code Related?	No
Adverse Effect on Security?	No
Risk of building shut down?	No
Accessibility Related?	No
Urgency of Action?	Low
Operation / Energy Savings?	N/A
Status	Not Specified
Funding Source	
Cost	\$204,601
Year	2038
Repeat Interval	30
Action: Commentary	

C3010 - Wall Finishes [1]

Discipline	Interiors
Category	C3010 - Wall Finishes
Element Number	1
Maintenance Type	Reactive
Replacement Cost	\$32,340
Last Major Action	2008
Location/Name	Interior
Brief Description	Painted wall finish.
Overall Condition	■ Good
Commentary	

Pictures

E-15840-20200512135311.jpg



E-15840-20200512154700.jpg



E-15840-20200512162736.jpg

Custom Details**Actions****Action Summary:** Replace**Action Type** Replacement**Life Safety / Code Related?** No**Adverse Effect on Security?** No**Risk of building shut down?** No**Accessibility Related?** No**Urgency of Action?** Low**Operation / Energy Savings?** N/A**Status** Not Specified**Funding Source****Cost** \$32,340**Year** 2038**Repeat Interval** 30**Action: Commentary****C3020 - Floor Finishes [1]****Discipline** Interiors**Category** C3020 - Floor Finishes**Element Number** 1**Maintenance Type** Reactive**Replacement Cost** \$539,401**Last Major Action** 2008**Location/Name** Interior**Brief Description** Vinyl composition floor tile, ceramic tile in restrooms, quarry tile in Kitchen, carpet in media center and offices, sealed concrete in mechanical room.**Overall Condition** ■ Good**Commentary**

Pictures

E-15841-20200512154623.jpg



E-15841-20200512162346.jpg



E-15841-20200512163128.jpg

E-15841-20200512125853.jpg

Custom Details**Actions****Action Summary:** Replace

Action Type	Replacement
Life Safety / Code Related?	No
Adverse Effect on Security?	No
Risk of building shut down?	No
Accessibility Related?	No
Urgency of Action?	Low
Operation / Energy Savings?	N/A
Status	Not Specified
Funding Source	
Cost	\$539,401
Year	2038
Repeat Interval	30
Action: Commentary	

C3020 - Floor Finishes [1]

Discipline	Interiors
Category	C3020 - Floor Finishes
Element Number	1
Maintenance Type	Reactive
Replacement Cost	\$85,260
Last Major Action	2008
Location/Name	Interior
Brief Description	Wood gym floor, carpet in the media center
Overall Condition	■ Good
Commentary	

Pictures



E-15842-20200512144618.jpg



E-15842-20200512145631.jpg



E-15842-20200512162721.jpg

E-15842-20200512135328.jpg

Custom Details

Actions

Action Summary: Replace

Action Type	Replacement
Life Safety / Code Related?	No
Adverse Effect on Security?	No
Risk of building shut down?	No
Accessibility Related?	No
Urgency of Action?	Low
Operation / Energy Savings?	N/A
Status	Not Specified
Funding Source	
Cost	\$85,260
Year	2038
Repeat Interval	30
Action: Commentary	

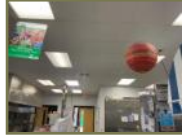
C3030 - Ceiling Finishes [1]

Discipline	Interiors
Category	C3030 - Ceiling Finishes
Element Number	1
Maintenance Type	Reactive
Replacement Cost	\$253,811
Last Major Action	2008
Location/Name	Interior
Brief Description	Suspended acoustic panel ceilings and painted gypsum wallboard
Overall Condition	<div style="display: inline-block; width: 10px; height: 10px; background-color: green; margin-right: 5px;"></div> Good
Commentary	

Pictures



E-15843-20200512153146.jpg



E-15843-20200512154636.jpg



E-15843-20200512162220.jpg



E-15843-20200512162855.jpg

Custom Details

Actions

Action Summary: Replace

Action Type	Replacement
Life Safety / Code Related?	No
Adverse Effect on Security?	No
Risk of building shut down?	No
Accessibility Related?	No
Urgency of Action?	Low
Operation / Energy Savings?	N/A
Status	Not Specified
Funding Source	
Cost	\$253,811
Year	2038
Repeat Interval	30
Action: Commentary	

C3030 - Ceiling Finishes [1]

Discipline	Interiors
Category	C3030 - Ceiling Finishes
Element Number	1
Maintenance Type	Reactive
Replacement Cost	\$40,118
Last Major Action	2008
Location/Name	Interior
Brief Description	Painted exposed steel structure in the Gym, suspended acoustic panel ceilings in the media center addition
Overall Condition	<div style="display: inline-block; width: 10px; height: 10px; background-color: green; margin-right: 5px;"></div> Good
Commentary	

Pictures



E-15844-20200512145810.jpg



E-15844-20200512145832.jpg



E-15844-20200512162747.jpg

Custom Details

Actions

Action Summary: Replace

Action Type	Replacement
Life Safety / Code Related?	No
Adverse Effect on Security?	No
Risk of building shut down?	No
Accessibility Related?	No
Urgency of Action?	Low
Operation / Energy Savings?	N/A
Status	Not Specified
Funding Source	
Cost	\$40,118
Year	2038
Repeat Interval	30
Action: Commentary	

D2010 - Plumbing Fixtures [1]

Discipline	Services - Mechanical
Category	D2010 - Plumbing Fixtures
Element Number	1
Maintenance Type	Reactive
Replacement Cost	\$236,593
Last Major Action	2008
Location/Name	Interior
Brief Description	vitreous china wall hung lavatories & water closets, flush valves, stainless steel electric water coolers, terrazzo mop basins
Overall Condition	■ Good
Commentary	

Pictures



E-15793-20200512133359.jpg



E-15793-20200512133424.jpg



E-15793-20200512152949.jpg



E-15793-20200512155433.jpg

Custom Details

Actions

Action Summary: Replace

Action Type	Replacement
Life Safety / Code Related?	No
Adverse Effect on Security?	No
Risk of building shut down?	No
Accessibility Related?	No
Urgency of Action?	Low
Operation / Energy Savings?	N/A
Status	Not Specified
Funding Source	
Cost	\$236,593
Year	2038
Repeat Interval	30
Action: Commentary	

D2010 - Plumbing Fixtures [1]

Discipline	Services - Mechanical
Category	D2010 - Plumbing Fixtures
Element Number	1
Maintenance Type	Reactive
Replacement Cost	\$37,397
Last Major Action	2008
Location/Name	Interior
Brief Description	vitreous china wall hung lavatory & water closet, flush valve and stainless steel electric water coolers.
Overall Condition	<div style="display: inline-block; width: 10px; height: 10px; background-color: green; margin-right: 5px;"></div> Good
Commentary	

Pictures



E-15794-20200512144449.jpg

E-15794-20200512134747.jpg

Custom Details

Actions

Action Summary:	Replace
Action Type	Replacement
Life Safety / Code Related?	No
Adverse Effect on Security?	No
Risk of building shut down?	No
Accessibility Related?	No
Urgency of Action?	Low
Operation / Energy Savings?	N/A
Status	Not Specified
Funding Source	
Cost	\$37,397
Year	2038
Repeat Interval	30
Action: Commentary	

D2020 - Domestic Water Distribution [1]

Discipline	Services - Mechanical
Category	D2020 - Domestic Water Distribution
Element Number	1
Maintenance Type	Reactive
Replacement Cost	\$360,841
Last Major Action	2008
Location/Name	Interior
Brief Description	Domestic water distribution system including re-circulation piping and pumps.
Overall Condition	<div style="display: inline-block; width: 10px; height: 10px; background-color: green; margin-right: 5px;"></div> Good
Commentary	

Pictures



E-15845-20200512131305.jpg



E-15845-20200512131110.jpg



E-15845-20200512131336.jpg



E-15845-20200512131359.jpg

Custom Details

Actions

Action Summary: Replace

Action Type	Replacement
Life Safety / Code Related?	No
Adverse Effect on Security?	No
Risk of building shut down?	No
Accessibility Related?	No
Urgency of Action?	Low
Operation / Energy Savings?	N/A
Status	Not Specified
Funding Source	
Cost	\$360,841
Year	2038
Repeat Interval	30
Action: Commentary	

D2020 - Domestic Water Distribution [1]

Discipline	Services - Mechanical
Category	D2020 - Domestic Water Distribution
Element Number	1
Maintenance Type	Reactive
Replacement Cost	\$57,036
Last Major Action	2008
Location/Name	Interior
Brief Description	Domestic water distribution system including re-circulation piping and pumps.
Overall Condition	<div style="display: inline-block; width: 10px; height: 10px; background-color: green; margin-right: 5px;"></div> Good
Commentary	

Pictures



E-15846-20200512165644.jpg

E-15846-20200512131050.jpg

Custom Details

Actions

Action Summary: Replace

Action Type	Replacement
Life Safety / Code Related?	No
Adverse Effect on Security?	No
Risk of building shut down?	No
Accessibility Related?	No
Urgency of Action?	Low
Operation / Energy Savings?	N/A
Status	Not Specified
Funding Source	
Cost	\$57,036
Year	2038
Repeat Interval	30
Action: Commentary	

D2030 - Sanitary Waste [1]

Discipline	Services - Mechanical
Category	D2030 - Sanitary Waste
Element Number	1
Maintenance Type	Reactive
Replacement Cost	\$308,017
Last Major Action	2008
Location/Name	Interior
Brief Description	Sanitary waste system including waste and vent piping.
Overall Condition	■ Good
Commentary	

Pictures

E-15795-20200512170548.jpg

E-15795-20200512161340.jpg

E-15795-20200512160729.jpg

Custom Details**Actions****Action Summary:** Repair

Action Type	Repair
Life Safety / Code Related?	No
Adverse Effect on Security?	No
Risk of building shut down?	No
Accessibility Related?	No
Urgency of Action?	Low
Operation / Energy Savings?	N/A
Status	Not Specified
Funding Source	
Cost	\$30,802
Year	2033
Repeat Interval	25
Action: Commentary	

D2030 - Sanitary Waste [1]

Discipline	Services - Mechanical
Category	D2030 - Sanitary Waste
Element Number	1
Maintenance Type	Reactive
Replacement Cost	\$48,686
Last Major Action	2008
Location/Name	Interior
Brief Description	Sanitary waste system including waste and vent piping.
Overall Condition	■ Good
Commentary	

Pictures

E-15796-20200512135813.jpg



E-15796-20200512135836.jpg

Custom Details**Actions****Action Summary:**

Repair

Action Type	Repair
Life Safety / Code Related?	No
Adverse Effect on Security?	No
Risk of building shut down?	No
Accessibility Related?	No
Urgency of Action?	Low
Operation / Energy Savings?	N/A
Status	Not Specified
Funding Source	
Cost	\$4,869
Year	2033
Repeat Interval	25
Action: Commentary	

D2040 - Rain Water Drainage [1]

Discipline	Services - Mechanical
Category	D2040 - Rain Water Drainage
Element Number	1
Maintenance Type	Reactive
Replacement Cost	\$90,024
Last Major Action	2008
Location/Name	Interior
Brief Description	Gutters and downspouts.
Overall Condition	■ Good
Commentary	

Pictures



E-15797-20200512133033.jpg



E-15797-20200512133008.jpg



E-15797-20200512141301.jpg



E-15797-20200512141211.jpg

Custom Details

Actions

Action Summary: Replace

Action Type	Replacement
Life Safety / Code Related?	No
Adverse Effect on Security?	No
Risk of building shut down?	No
Accessibility Related?	No
Urgency of Action?	Low
Operation / Energy Savings?	N/A
Status	Not Specified
Funding Source	
Cost	\$90,024
Year	2058
Repeat Interval	50
Action: Commentary	

D2040 - Rain Water Drainage [1]

Discipline	Services - Mechanical
Category	D2040 - Rain Water Drainage
Element Number	1
Maintenance Type	Reactive
Replacement Cost	\$14,230
Last Major Action	2008
Location/Name	Interior
Brief Description	Gutters and downspouts.
Overall Condition	<div style="display: inline-block; width: 10px; height: 10px; background-color: green; margin-right: 5px;"></div> Good
Commentary	

Pictures



E-15798-20200512141316.jpg



E-15798-20200512141357.jpg



E-15798-20200512141756.jpg



E-15798-20200512143756.jpg

Custom Details

Actions

Action Summary: Replace

Action Type	Replacement
Life Safety / Code Related?	No
Adverse Effect on Security?	No
Risk of building shut down?	No
Accessibility Related?	No
Urgency of Action?	Low
Operation / Energy Savings?	N/A
Status	Not Specified
Funding Source	
Cost	\$14,230
Year	2058
Repeat Interval	50
Action: Commentary	

D2095 - Domestic Water Heaters [1]

Discipline	Services - Mechanical
Category	D2095 - Domestic Water Heaters
Element Number	1
Maintenance Type	Reactive
Replacement Cost	\$29,707
Last Major Action	2019
Location/Name	Interior
Brief Description	Electric water heater.
Overall Condition	<div style="display: inline-block; width: 10px; height: 10px; background-color: green; margin-right: 5px;"></div> Good
Commentary	

Pictures

E-15799-20200512130710.jpg



E-15799-20200512130739.jpg



E-15799-20200512161823.jpg

Custom Details**Actions****Action Summary:** Replace

Action Type	Replacement
Life Safety / Code Related?	No
Adverse Effect on Security?	No
Risk of building shut down?	No
Accessibility Related?	No
Urgency of Action?	Low
Operation / Energy Savings?	N/A
Status	Not Specified
Funding Source	
Cost	\$29,707
Year	2034
Repeat Interval	15
Action: Commentary	

D2095 - Domestic Water Heaters [1]

Discipline	Services - Mechanical
Category	D2095 - Domestic Water Heaters
Element Number	1
Maintenance Type	Reactive
Replacement Cost	\$4,696
Last Major Action	2008
Location/Name	Interior
Brief Description	Gas / Electric water heater.
Overall Condition	■ Fair
Commentary	

Pictures

E-15800-20200512130802.jpg

Custom Details**Actions**


Action Summary:	Replace
Action Type	Replacement
Life Safety / Code Related?	No
Adverse Effect on Security?	No
Risk of building shut down?	No
Accessibility Related?	No
Urgency of Action?	Medium
Operation / Energy Savings?	N/A
Status	Not Specified
Funding Source	
Cost	\$4,696
Year	2025
Repeat Interval	15
Action: Commentary	

D3012 - Gas Supply System [1]

Discipline	Services - Mechanical
Category	D3012 - Gas Supply System
Element Number	1
Maintenance Type	Reactive
Replacement Cost	\$7,753
Last Major Action	2008
Location/Name	Interior
Brief Description	Gas supply system including piping and metering.
Overall Condition	■ Good
Commentary	

Pictures**Custom Details****Actions**


D3025 - Primary HVAC Pumps [1]

Discipline	Services - Mechanical
Category	D3025 - Primary HVAC Pumps
Element Number	1
Maintenance Type	Reactive
Replacement Cost	\$21,045
Last Major Action	2008
Location/Name	Interior
Brief Description	Pumps associated with geothermal HVAC system.
Overall Condition	 Good
Commentary	

Pictures**Custom Details****Actions**[Action Summary:](#) Replace

Action Type	Replacement
Life Safety / Code Related?	No
Adverse Effect on Security?	No
Risk of building shut down?	No
Accessibility Related?	No
Urgency of Action?	Low
Operation / Energy Savings?	N/A
Status	Not Specified
Funding Source	
Cost	\$21,045
Year	2033
Repeat Interval	25
Action: Commentary	

D3025 - Primary HVAC Pumps [1]

Discipline	Services - Mechanical
Category	D3025 - Primary HVAC Pumps
Element Number	1
Maintenance Type	Reactive
Replacement Cost	\$3,326
Last Major Action	2008
Location/Name	Interior
Brief Description	Pumps located on mezzanine above Gym storage
Overall Condition	 Good
Commentary	

Pictures

E-15808-20200512134017.jpg



E-15808-20200512134710.jpg

Custom Details**Actions****D3034 - Packaged Air Conditioning Units [1]**

Discipline	Services - Mechanical
Category	D3034 - Packaged Air Conditioning Units
Element Number	1
Maintenance Type	Reactive
Replacement Cost	\$830,806
Last Major Action	2008
Location/Name	Interior
Brief Description	Split system units serving MDF room and Dry foods storage
Overall Condition	■ Good
Commentary	

Pictures**Custom Details****Actions**

[Action Summary:](#) Replace

Action Type	Replacement
Life Safety / Code Related?	No
Adverse Effect on Security?	No
Risk of building shut down?	No
Accessibility Related?	No
Urgency of Action?	Low
Operation / Energy Savings?	N/A
Status	Not Specified
Funding Source	
Cost	\$830,806
Year	2033
Repeat Interval	25
Action: Commentary	

D3041 - Air Distribution Systems [1]

Discipline	Services - Mechanical
Category	D3041 - Air Distribution Systems
Element Number	1
Maintenance Type	Reactive
Replacement Cost	\$406,916
Last Major Action	2008
Location/Name	Interior
Brief Description	Captive Aire energy recovery units
Overall Condition	■ Good
Commentary	

Pictures

E-15809-20200512155803.jpg



E-15809-20200512155843.jpg



E-15809-20200512155827.jpg



E-15809-20200512155906.jpg

Custom Details**Actions****D3041 - Air Distribution Systems [1]**

Discipline	Services - Mechanical
Category	D3041 - Air Distribution Systems
Element Number	1
Maintenance Type	Reactive
Replacement Cost	\$64,319
Last Major Action	2008
Location/Name	Interior
Brief Description	Captive Aire energy recovery units
Overall Condition	■ Good
Commentary	

Pictures



E-15810-20200512140119.jpg



E-15810-20200512131907.jpg

E-15810-20200512131744.jpg

E-15810-20200512131836.jpg

Custom Details

Actions

D3043 - Hydronic Distribution Systems [1]

Discipline	Services - Mechanical
Category	D3043 - Hydronic Distribution Systems
Element Number	1
Maintenance Type	Reactive
Replacement Cost	\$250,782
Last Major Action	2008
Location/Name	Interior
Brief Description	Supply and Return piping serving individual heat pumps
Overall Condition	■ Good
Commentary	

Pictures



E-15811-20200512132131.jpg

E-15811-20200512160416.jpg

Custom Details

Actions

Action Summary: Replace

Action Type	Replacement
Life Safety / Code Related?	No
Adverse Effect on Security?	No
Risk of building shut down?	No
Accessibility Related?	No
Urgency of Action?	Low
Operation / Energy Savings?	N/A
Status	Not Specified
Funding Source	
Cost	\$250,782
Year	2053
Repeat Interval	45
Action: Commentary	

D3043 - Hydronic Distribution Systems [1]

Discipline	Services - Mechanical
Category	D3043 - Hydronic Distribution Systems
Element Number	1
Maintenance Type	Reactive
Replacement Cost	\$39,640
Last Major Action	2008
Location/Name	Interior
Brief Description	Supply and return piping serving heat pumps
Overall Condition	■ Good
Commentary	

Pictures

E-15812-20200512135119.jpg



E-15812-20200512134247.jpg



E-15812-20200512134226.jpg



E-15811-20200512134417.jpg

Custom Details**Actions**

[Action Summary:](#) Replace

Action Type	Replacement
Life Safety / Code Related?	No
Adverse Effect on Security?	No
Risk of building shut down?	No
Accessibility Related?	No
Urgency of Action?	Low
Operation / Energy Savings?	N/A
Status	Not Specified
Funding Source	
Cost	\$39,640
Year	2053
Repeat Interval	45
Action: Commentary	

D3045 - Exhaust Ventilation Systems [1]

Discipline	Services - Mechanical
Category	D3045 - Exhaust Ventilation Systems
Element Number	1
Maintenance Type	Reactive
Replacement Cost	\$62,549
Last Major Action	2008
Location/Name	Interior
Brief Description	Ducted air exhaust to roof mounted fans
Overall Condition	■ Good
Commentary	

Pictures

E-15813-20200512141852.jpg



E-15813-20200512141924.jpg




E-15813-20200512161104.jpg

Custom Details**Actions**

[Action Summary:](#) Replace

Action Type	Replacement
Life Safety / Code Related?	No
Adverse Effect on Security?	No
Risk of building shut down?	No
Accessibility Related?	No
Urgency of Action?	Low
Operation / Energy Savings?	N/A
Status	Not Specified
Funding Source	
Cost	\$62,549
Year	2041
Repeat Interval	30
Action: Commentary	


D3045 - Exhaust Ventilation Systems [1]

Discipline	Services - Mechanical
Category	D3045 - Exhaust Ventilation Systems
Element Number	1
Maintenance Type	Reactive
Replacement Cost	\$9,887
Last Major Action	2008
Location/Name	Interior
Brief Description	Exhaust fans
Overall Condition	 Good
Commentary	

Pictures**Custom Details****Actions**[Action Summary:](#) Replace

Action Type	Replacement
Life Safety / Code Related?	No
Adverse Effect on Security?	No
Risk of building shut down?	No
Accessibility Related?	No
Urgency of Action?	Low
Operation / Energy Savings?	N/A
Status	Not Specified
Funding Source	
Cost	\$9,887
Year	2038
Repeat Interval	30
Action: Commentary	

D3057 - Radiant Heater Units [1]

Discipline	Services - Mechanical
Category	D3057 - Radiant Heater Units
Element Number	1
Maintenance Type	Reactive
Replacement Cost	\$117,702
Last Major Action	2008
Location/Name	Interior
Brief Description	Electric heating units utilized in mechanical room & other select areas
Overall Condition	 Good
Commentary	

Pictures



E-15813-20200512153019.jpg

E-15851-20200512133132.jpg

Custom Details

Actions

Action Summary: Replace

Action Type	Replacement
Life Safety / Code Related?	No
Adverse Effect on Security?	No
Risk of building shut down?	No
Accessibility Related?	No
Urgency of Action?	Low
Operation / Energy Savings?	N/A
Status	Not Specified
Funding Source	
Cost	\$117,702
Year	2053
Repeat Interval	45
Action: Commentary	

D3060 - Controls And Instrumentation [1]

Discipline	Services - Mechanical
Category	D3060 - Controls And Instrumentation
Element Number	1
Maintenance Type	Reactive
Replacement Cost	\$138,384
Last Major Action	2018
Location/Name	Interior
Brief Description	DDC Automated Logic thermostat & controls
Overall Condition	<div style="display: flex; align-items: center;"> <div style="width: 10px; height: 10px; background-color: green; margin-right: 5px;"></div> Good </div>
Commentary	Main Controller was replaced in 2018 as a result of storm damage

Pictures

E-15815-20200512160854.jpg

E-15815-20200512161749.jpg

E-15815-20200512163821.jpg

E-15815-20200512155221.jpg

Custom Details**Actions****Action Summary:** Replace

Action Type	Replacement
Life Safety / Code Related?	No
Adverse Effect on Security?	No
Risk of building shut down?	No
Accessibility Related?	No
Urgency of Action?	Low
Operation / Energy Savings?	N/A
Status	Not Specified
Funding Source	
Cost	\$138,384
Year	2042
Repeat Interval	24
Action: Commentary	

D3060 - Controls And Instrumentation [1]

Discipline	Services - Mechanical
Category	D3060 - Controls And Instrumentation
Element Number	1
Maintenance Type	Reactive
Replacement Cost	\$21,874
Last Major Action	2008
Location/Name	Interior
Brief Description	DDC Automated Logic thermostat & controls
Overall Condition	■ Good
Commentary	

Pictures

E-15816-20200512134138.jpg



E-15816-20200512134057.jpg

Custom Details**Actions****Action Summary:** Replace

Action Type	Replacement
Life Safety / Code Related?	No
Adverse Effect on Security?	No
Risk of building shut down?	No
Accessibility Related?	No
Urgency of Action?	Low
Operation / Energy Savings?	N/A
Status	Not Specified
Funding Source	
Cost	\$21,874
Year	2032
Repeat Interval	24
Action: Commentary	

D4010 - Sprinklers [1]

Discipline	Services - Mechanical
Category	D4010 - Sprinklers
Element Number	1
Maintenance Type	Reactive
Replacement Cost	\$312,481
Last Major Action	1981
Location/Name	Interior
Brief Description	100% NFPA compliant fire suppression system
Overall Condition	■ Good
Commentary	

Pictures

E-15817-20200512131513.jpg

E-15817-20200512131004.jpg

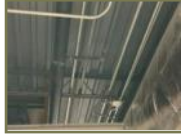
Custom Details**Actions****Action Summary:** Replace

Action Type	Replacement
Life Safety / Code Related?	No
Adverse Effect on Security?	No
Risk of building shut down?	No
Accessibility Related?	No
Urgency of Action?	Low
Operation / Energy Savings?	N/A
Status	Not Specified
Funding Source	
Cost	\$312,481
Year	2028
Repeat Interval	47
Action: Commentary	

D4010 - Sprinklers [1]

Discipline	Services - Mechanical
Category	D4010 - Sprinklers
Element Number	1
Maintenance Type	Reactive
Replacement Cost	\$49,392
Last Major Action	2008
Location/Name	Interior
Brief Description	100% NFPA compliant fire suppression system
Overall Condition	■ Good
Commentary	

Pictures



E-15818-20200512135505.jpg

E-15818-20200512145510.jpg

E-15818-20200512135356.jpg

Custom Details

Actions

Action Summary: Replace

Action Type	Replacement
Life Safety / Code Related?	No
Adverse Effect on Security?	No
Risk of building shut down?	No
Accessibility Related?	No
Urgency of Action?	Low
Operation / Energy Savings?	N/A
Status	Not Specified
Funding Source	
Cost	\$49,392
Year	2055
Repeat Interval	47
Action: Commentary	

D5010 - Electrical Service And Distribution [1]

Discipline	Services - Electrical
Category	D5010 - Electrical Service And Distribution
Element Number	1
Maintenance Type	Reactive
Replacement Cost	\$361,319
Last Major Action	1981
Location/Name	Interior
Brief Description	Electrical service distribution. -Includes circuit panel and all electrical equipment.
Overall Condition	■ Good
Commentary	The electric switchgear is expected to remain serviceable for approximately 50 years

Pictures



E-15821-20200512125221.jpg

E-15821-20200512125332.jpg

E-15821-20200512125126.jpg

E-15821-20200512125139.jpg

Custom Details

Actions

Action Summary: Replace

Action Type	Replacement
Life Safety / Code Related?	No
Adverse Effect on Security?	No
Risk of building shut down?	No
Accessibility Related?	No
Urgency of Action?	Low
Operation / Energy Savings?	N/A
Status	Not Specified
Funding Source	
Cost	\$361,319
Year	2031
Repeat Interval	30
Action: Commentary	

D5010 - Electrical Service And Distribution [1]

Discipline	Services - Electrical
Category	D5010 - Electrical Service And Distribution
Element Number	1
Maintenance Type	Reactive
Replacement Cost	\$57,112
Last Major Action	2008
Location/Name	Interior
Brief Description	Electrical service distribution. -Includes circuit panel and all electrical equipment.
Overall Condition	■ Good
Commentary	

Pictures

E-15822-20200512151639.jpg

E-15822-20200512125459.jpg

E-15822-20200512134818.jpg

Custom Details**Actions****Action Summary:** Replace**Action Type** Replacement**Life Safety / Code Related?** No**Adverse Effect on Security?** No**Risk of building shut down?** No**Accessibility Related?** No**Urgency of Action?** Low**Operation / Energy Savings?** N/A**Status** Not Specified**Funding Source****Cost** \$57,112**Year** 2038**Repeat Interval** 30**Action: Commentary****D5021 - Branch Wiring [1]****Discipline** Services - Electrical**Category** D5021 - Branch Wiring**Element Number** 1**Maintenance Type** Reactive**Replacement Cost** \$631,658**Last Major Action** 2008**Location/Name** Interior**Brief Description** Branch wiring devices and components.

-Include wiring, conduit, equipment connections, receptacles and switches.

Overall Condition ■ Good**Commentary**

Pictures

E-15823-20200512125206.jpg

E-15823-20200512132656.jpg

E-15823-20200512133213.jpg

E-15823-20200512154822.jpg

Custom Details**Actions****Action Summary:** Repair

Action Type	Repair
Life Safety / Code Related?	No
Adverse Effect on Security?	No
Risk of building shut down?	No
Accessibility Related?	No
Urgency of Action?	Low
Operation / Energy Savings?	N/A
Status	Not Specified
Funding Source	
Cost	\$63,166
Year	2026
Repeat Interval	15
Action: Commentary	

D5021 - Branch Wiring [1]

Discipline	Services - Electrical
Category	D5021 - Branch Wiring
Element Number	1
Maintenance Type	Reactive
Replacement Cost	\$99,842
Last Major Action	2008
Location/Name	Interior
Brief Description	Branch wiring devices and components. -Include wiring, conduit, equipment connections, receptacles and switches.
Overall Condition	■ Good
Commentary	

Pictures



E-15824-20200512125656.jpg



E-15824-20200512125720.jpg



E-15823-20200512132656.jpg



E-15824-20200512135929.jpg

Custom Details

Actions

Action Summary: Repair

Action Type	Repair
Life Safety / Code Related?	No
Adverse Effect on Security?	No
Risk of building shut down?	No
Accessibility Related?	No
Urgency of Action?	Low
Operation / Energy Savings?	N/A
Status	Not Specified
Funding Source	
Cost	\$9,984
Year	2023
Repeat Interval	15
Action: Commentary	

D5022 - Lighting Equipment [1]

Discipline	Services - Electrical
Category	D5022 - Lighting Equipment
Element Number	1
Maintenance Type	Reactive
Replacement Cost	\$669,442
Last Major Action	2008
Location/Name	Interior
Brief Description	Lighting systems are generally T5 lamps and are equipped with IECC compliant controls
Overall Condition	<div style="display: inline-block; width: 10px; height: 10px; background-color: green; margin-right: 5px;"></div> Good
Commentary	

Pictures

E-15847-20200512132614.jpg



E-15847-20200512132629.jpg



E-15847-20200512153035.jpg



E-15847-20200512153043.jpg

Custom Details**Actions****Action Summary:** Replace

Action Type	Replacement
Life Safety / Code Related?	No
Adverse Effect on Security?	No
Risk of building shut down?	No
Accessibility Related?	No
Urgency of Action?	Low
Operation / Energy Savings?	N/A
Status	Not Specified
Funding Source	
Cost	\$669,442
Year	2033
Repeat Interval	25
Action: Commentary	

D5022 - Lighting Equipment [1]

Discipline	Services - Electrical
Category	D5022 - Lighting Equipment
Element Number	1
Maintenance Type	Reactive
Replacement Cost	\$105,815
Last Major Action	2008
Location/Name	Interior
Brief Description	LED lighting in the GYM
Overall Condition	■ Good
Commentary	

Pictures



E-15848-20200512131935.jpg



E-15848-20200512135951.jpg



E-15848-20200512140225.jpg



E-15848-20200512144717.jpg

Custom Details

Actions

Action Summary: Replace

Action Type	Replacement
Life Safety / Code Related?	No
Adverse Effect on Security?	No
Risk of building shut down?	No
Accessibility Related?	No
Urgency of Action?	Low
Operation / Energy Savings?	N/A
Status	Not Specified
Funding Source	
Cost	\$105,815
Year	2033
Repeat Interval	25
Action: Commentary	

D5032 - Intercommunications And Paging [1]

Discipline	Services - Electrical
Category	D5032 - Intercommunications And Paging
Element Number	1
Maintenance Type	Reactive
Replacement Cost	\$146,675
Last Major Action	2008
Location/Name	Interior
Brief Description	Dukane central intercom system with speakers in all rooms
Overall Condition	<div style="display: inline-block; width: 10px; height: 10px; background-color: green; margin-right: 5px;"></div> Good
Commentary	

Pictures

E-15825-20200512153101.jpg



E-15825-20200512160938.jpg



E-15825-20200512164755.jpg

Custom Details**Actions****Action Summary:** Replace

Action Type	Replacement
Life Safety / Code Related?	No
Adverse Effect on Security?	No
Risk of building shut down?	No
Accessibility Related?	No
Urgency of Action?	Low
Operation / Energy Savings?	N/A
Status	Not Specified
Funding Source	
Cost	\$146,675
Year	2033
Repeat Interval	25
Action: Commentary	

D5032 - Intercommunications And Paging [1]

Discipline	Services - Electrical
Category	D5032 - Intercommunications And Paging
Element Number	1
Maintenance Type	Reactive
Replacement Cost	\$23,184
Last Major Action	2008
Location/Name	Interior
Brief Description	Extension of primary system
Overall Condition	■ Good
Commentary	

Pictures



E-15826-20200512144738.jpg



E-15826-20200512151730.jpg



E-15826-20200512144838.jpg

Custom Details

Actions

Action Summary:

Replace

Action Type	Replacement
Life Safety / Code Related?	No
Adverse Effect on Security?	No
Risk of building shut down?	No
Accessibility Related?	No
Urgency of Action?	Low
Operation / Energy Savings?	N/A
Status	Not Specified
Funding Source	
Cost	\$23,184
Year	2033
Repeat Interval	25
Action: Commentary	

D5033 - Telephone Systems [1]

Discipline	Services - Electrical
Category	D5033 - Telephone Systems
Element Number	1
Maintenance Type	Reactive
Replacement Cost	\$68,236
Last Major Action	2000
Location/Name	Interior
Brief Description	Voice over internet protocol - all classrooms have phones
Overall Condition	<div style="display: inline-block; width: 10px; height: 10px; background-color: green; margin-right: 5px;"></div> Good
Commentary	

Pictures

E-15827-20200512164811.jpg

E-15827-20200512164928.jpg

Custom Details**Actions****D5033 - Telephone Systems [1]**

Discipline	Services - Electrical
Category	D5033 - Telephone Systems
Element Number	1
Maintenance Type	Reactive
Replacement Cost	\$10,786
Last Major Action	2008
Location/Name	Interior
Brief Description	extension of primary system
Overall Condition	■ Good
Commentary	

Pictures**Custom Details****Actions****D5036 - Clock & Program System [1]**

Discipline	Services - Electrical
Category	D5036 - Clock & Program System
Element Number	1
Maintenance Type	Reactive
Replacement Cost	\$0
Last Major Action	2008
Location/Name	
Brief Description	Synchronized GPS system - Primex
Overall Condition	■ Good
Commentary	

Pictures

E-16382-20200512164728.jpg

E-16382-20200512154931.jpg

Custom Details**Actions****D5036 - Clock & Program System [1]**

Discipline	Services - Electrical
Category	D5036 - Clock & Program System
Element Number	1
Maintenance Type	Reactive
Replacement Cost	\$0
Last Major Action	2008
Location/Name	
Brief Description	Synchronized GPS systems - Primex
Overall Condition	■ Good
Commentary	

Pictures

E-16383-20200512145918.jpg

Custom Details**Actions****D5037 - Fire Alarm System [1]**

Discipline	Services - Electrical
Category	D5037 - Fire Alarm System
Element Number	1
Maintenance Type	Reactive
Replacement Cost	\$179,623
Last Major Action	2008
Location/Name	Interior
Brief Description	Fire-Lite Addressable Fire Alarm System (Honeywell) maintained by Koorsen
Overall Condition	■ Good
Commentary	

Pictures

E-15829-20200512124904.jpg



E-15829-20200512132227.jpg



E-15829-20200512155028.jpg

Custom Details**Actions****Action Summary:** Replace

Action Type	Replacement
Life Safety / Code Related?	No
Adverse Effect on Security?	No
Risk of building shut down?	No
Accessibility Related?	No
Urgency of Action?	Low
Operation / Energy Savings?	N/A
Status	Not Specified
Funding Source	
Cost	\$179,623
Year	2033
Repeat Interval	25
Action: Commentary	

D5037 - Fire Alarm System [1]

Discipline	Services - Electrical
Category	D5037 - Fire Alarm System
Element Number	1
Maintenance Type	Reactive
Replacement Cost	\$28,392
Last Major Action	2008
Location/Name	Interior
Brief Description	Fire-Lite Addressable fire alarm system (Honeywell) maintained by Koorsen
Overall Condition	■ Good
Commentary	

Pictures



E-15830-20200512145429.jpg



E-15830-20200512151542.jpg

Custom Details

Actions

Action Summary:	Replace
Action Type	Replacement
Life Safety / Code Related?	No
Adverse Effect on Security?	No
Risk of building shut down?	No
Accessibility Related?	No
Urgency of Action?	Low
Operation / Energy Savings?	N/A
Status	Not Specified
Funding Source	
Cost	\$28,392
Year	2033
Repeat Interval	25
Action: Commentary	

D5038 - Security Systems [1]

Discipline	Services - Electrical
Category	D5038 - Security Systems
Element Number	1
Maintenance Type	Reactive
Replacement Cost	\$325,395
Last Major Action	2008
Location/Name	Interior
Brief Description	Card Entry Access Control System at Main Entry & other select exterior doors. Aiphone intercom at secure entry vestibule. Bullet resistant glass and wall panels assemblies in secure vestibule installed in 2019. Building intrusion system.
Overall Condition	<div style="display: inline-block; width: 10px; height: 10px; background-color: green; margin-right: 5px;"></div> Good
Commentary	

Pictures



E-15831-20200512124839.jpg



E-15831-20200512131451.jpg



E-15831-20200512155058.jpg



E-15831-20200512162237.jpg

Custom Details

Actions

Action Summary: Replace

Action Type	Replacement
Life Safety / Code Related?	No
Adverse Effect on Security?	No
Risk of building shut down?	No
Accessibility Related?	No
Urgency of Action?	Low
Operation / Energy Savings?	N/A
Status	Not Specified
Funding Source	
Cost	\$325,395
Year	2033
Repeat Interval	25
Action: Commentary	

D5038 - Security Systems [1]

Discipline	Services - Electrical
Category	D5038 - Security Systems
Element Number	1
Maintenance Type	Reactive
Replacement Cost	\$51,433
Last Major Action	2008
Location/Name	Interior
Brief Description	Extension of primary systems
Overall Condition	<div style="display: inline-block; width: 10px; height: 10px; background-color: green; margin-right: 5px;"></div> Good
Commentary	

Pictures



E-15832-20200512143541.jpg



E-15832-20200512143701.jpg

Custom Details

Actions

Action Summary:

Replace

Action Type	Replacement
Life Safety / Code Related?	No
Adverse Effect on Security?	No
Risk of building shut down?	No
Accessibility Related?	No
Urgency of Action?	Low
Operation / Energy Savings?	N/A
Status	Not Specified
Funding Source	
Cost	\$51,433
Year	2033
Repeat Interval	25
Action: Commentary	

D5091 - Exit & Emergency Light Systems [1]

Discipline	Services - Electrical
Category	D5091 - Exit & Emergency Light Systems
Element Number	1
Maintenance Type	Reactive
Replacement Cost	\$6,352
Last Major Action	2008
Location/Name	Interior
Brief Description	Exit signs and emergency lighting.
Overall Condition	■ Good
Commentary	

Pictures

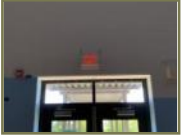
E-15833-20200512132526.jpg

Custom Details**Actions**

Action Summary:	Replace
Action Type	Replacement
Life Safety / Code Related?	No
Adverse Effect on Security?	No
Risk of building shut down?	No
Accessibility Related?	No
Urgency of Action?	Low
Operation / Energy Savings?	N/A
Status	Not Specified
Funding Source	
Cost	\$6,352
Year	2033
Repeat Interval	25
Action: Commentary	

D5091 - Exit & Emergency Light Systems [1]

Discipline	Services - Electrical
Category	D5091 - Exit & Emergency Light Systems
Element Number	1
Maintenance Type	Reactive
Replacement Cost	\$1,004
Last Major Action	2008
Location/Name	Interior
Brief Description	Exit signs and emergency lighting.
Overall Condition	■ Good
Commentary	

Pictures

E-15834-20200512145537.jpg

Custom Details**Actions****Action Summary:**

Replace

Action Type	Replacement
Life Safety / Code Related?	No
Adverse Effect on Security?	No
Risk of building shut down?	No
Accessibility Related?	No
Urgency of Action?	Low
Operation / Energy Savings?	N/A
Status	Not Specified
Funding Source	
Cost	\$1,004
Year	2033
Repeat Interval	25
Action: Commentary	

E1010 - Kitchen Equipment [1]

Discipline	Equipment and Furnishings
Category	E1010 - Kitchen Equipment
Element Number	1
Maintenance Type	Reactive
Replacement Cost	\$530,580
Last Major Action	2000
Location/Name	Interior
Brief Description	Walk-In cooler, freezer, combi ovens, steamer, convection ovens, commercial mixer, slicer, kettle, warming/holding cabinets, milk coolers, serving lines.
Overall Condition	■ Good
Commentary	

Pictures

E-15853-20200512154556.jpg



E-15853-20200512154423.jpg



E-15853-20200512154728.jpg



E-15853-20200512154714.jpg

Custom Details**Actions**[Action Summary:](#) Replace

Action Type	Replacement
Life Safety / Code Related?	No
Adverse Effect on Security?	No
Risk of building shut down?	No
Accessibility Related?	No
Urgency of Action?	Low
Operation / Energy Savings?	N/A
Status	Not Specified
Funding Source	
Cost	\$530,580
Year	2030
Repeat Interval	30
Action: Commentary	

G2010 - Roadways [1]

Discipline	Building Sitework
Category	G2010 - Roadways
Element Number	1
Maintenance Type	Reactive
Replacement Cost	\$356,377
Last Major Action	2008
Location/Name	Site
Brief Description	Asphalt roadway surfacing.
Overall Condition	■ Good
Commentary	

Pictures

E-15855-20200512143429.jpg



E-15855-20200512142333.jpg



E-15855-20200512143847.jpg

Custom Details**Actions****Action Summary:** Replace

Action Type	Replacement
Life Safety / Code Related?	No
Adverse Effect on Security?	No
Risk of building shut down?	No
Accessibility Related?	No
Urgency of Action?	Low
Operation / Energy Savings?	N/A
Status	Not Specified
Funding Source	
Cost	\$356,377
Year	2038
Repeat Interval	30
Action: Commentary	

G2020 - Parking Lots [1]

Discipline	Building Sitework
Category	G2020 - Parking Lots
Element Number	1
Maintenance Type	Reactive
Replacement Cost	\$119,040
Last Major Action	2008
Location/Name	Site
Brief Description	Asphalt parking lot surfacing.
Overall Condition	■ Good
Commentary	

Pictures

E-15856-20200512142104.jpg



E-15856-20200512142411.jpg

Custom Details**Actions****Action Summary:**

Replace

Action Type

Replacement

Life Safety / Code Related?

No

Adverse Effect on Security?

No

Risk of building shut down?

No

Accessibility Related?

No

Urgency of Action?

Low

Operation / Energy Savings?

N/A

Status

Not Specified

Funding Source**Cost**

\$119,040

Year

2038

Repeat Interval

30

Action: Commentary**G2030 - Pedestrian Paving [1]****Discipline**

Building Sitework

Category

G2030 - Pedestrian Paving

Element Number

1

Maintenance Type

Reactive

Replacement Cost

\$168,995

Last Major Action

2008

Location/Name

Site

Brief Description

Concrete pedestrian walkways.

Overall Condition■ Good**Commentary**

Pictures

E-15857-20200512142036.jpg



E-15857-20200512141629.jpg



E-15857-20200512141600.jpg

Custom Details**Actions****Action Summary:** Replace

Action Type	Replacement
Life Safety / Code Related?	No
Adverse Effect on Security?	No
Risk of building shut down?	No
Accessibility Related?	No
Urgency of Action?	Low
Operation / Energy Savings?	N/A
Status	Not Specified
Funding Source	
Cost	\$168,995
Year	2038
Repeat Interval	30
Action: Commentary	

G2040 - Site Development [1]

Discipline	Building Sitework
Category	G2040 - Site Development
Element Number	1
Maintenance Type	Reactive
Replacement Cost	\$784,391
Last Major Action	2008
Location/Name	Site
Brief Description	Playground equipment, flag pole, marquis, landscaping, covered bus and parent pick-up and drop-off, covered main entrance.
Overall Condition	■ Good
Commentary	

Pictures

E-15858-20200512141659.jpg



E-15858-20200512141719.jpg



E-15858-20200512142300.jpg



E-15858-20200512142546.jpg

Custom Details**Actions****Action Summary:**

Replace

Action Type

Replacement

Life Safety / Code Related?

No

Adverse Effect on Security?

No

Risk of building shut down?

No

Accessibility Related?

No

Urgency of Action?

Low

Operation / Energy Savings?

N/A

Status

Not Specified

Funding Source**Cost**

\$784,391

Year

2038

Repeat Interval

30

Action: Commentary**G2049-A - Garbage Area & Structure [1]****Discipline**

Building Sitework

Category

G2049-A - Garbage Area & Structure

Element Number

1

Maintenance Type

Reactive

Replacement Cost

\$3,246

Last Major Action

2008

Location/Name

Site

Brief Description

There is a paved area for garbage and recyclables. There is no enclosure

Overall Condition■ Good**Commentary**

Pictures

E-15859-20200512142442.jpg

Custom Details**Actions**

<u>Action Summary:</u>	Replace
Action Type	Replacement
Life Safety / Code Related?	No
Adverse Effect on Security?	No
Risk of building shut down?	No
Accessibility Related?	No
Urgency of Action?	Low
Operation / Energy Savings?	N/A
Status	Not Specified
Funding Source	
Cost	\$3,246
Year	2038
Repeat Interval	30
Action: Commentary	

G3010 - Water Supply [1]

Discipline	Building Sitework
Category	G3010 - Water Supply
Element Number	1
Maintenance Type	Reactive
Replacement Cost	\$33,321
Last Major Action	2008
Location/Name	Site
Brief Description	Water supply distribution for the site.
Overall Condition	■ Good
Commentary	

Pictures

E-15860-20200512165758.jpg



E-15860-20200512165732.jpg



E-15860-20200512170652.jpg

Custom Details**Actions****Action Summary:**

Replace

Action Type

Replacement

Life Safety / Code Related?

No

Adverse Effect on Security?

No

Risk of building shut down?

No

Accessibility Related?

No

Urgency of Action?

Low

Operation / Energy Savings?

N/A

Status

Not Specified

Funding Source**Cost**

\$33,321

Year

2038

Repeat Interval

30

Action: Commentary**G3020 - Sanitary Sewer [1]****Discipline**

Building Sitework

Category

G3020 - Sanitary Sewer

Element Number

1

Maintenance Type

Reactive

Replacement Cost

\$108,810

Last Major Action

1981

Location/Name

Site

Brief Description

Sanitary disposal system for the site.

Overall Condition■ Good**Commentary**

Pictures

E-15862-20200512170729.jpg

Custom Details**Actions**

Action Summary:	Replace
Action Type	Replacement
Life Safety / Code Related?	No
Adverse Effect on Security?	No
Risk of building shut down?	No
Accessibility Related?	No
Urgency of Action?	Low
Operation / Energy Savings?	N/A
Status	Not Specified
Funding Source	
Cost	\$108,810
Year	2031
Repeat Interval	50
Action: Commentary	

G3030 - Storm Sewer [1]

Discipline	Building Sitework
Category	G3030 - Storm Sewer
Element Number	1
Maintenance Type	Reactive
Replacement Cost	\$92,070
Last Major Action	1981
Location/Name	Site
Brief Description	Storm water collection including manholes and water collection.
Overall Condition	■ Good
Commentary	

Pictures



E-15861-20200512142851.jpg



E-15861-20200512142945.jpg



E-15861-20200512143315.jpg



E-15861-20200512165904.jpg

Custom Details

Actions

Action Summary: Replace

Action Type	Replacement
Life Safety / Code Related?	No
Adverse Effect on Security?	No
Risk of building shut down?	No
Accessibility Related?	No
Urgency of Action?	Low
Operation / Energy Savings?	N/A
Status	Not Specified
Funding Source	
Cost	\$92,070
Year	2031
Repeat Interval	50
Action: Commentary	

G4020 - Site Lighting [1]

Discipline	Building Sitework
Category	G4020 - Site Lighting
Element Number	1
Maintenance Type	Reactive
Replacement Cost	\$10,563
Last Major Action	2008
Location/Name	Site
Brief Description	Pole mounted LED site lighting.
Overall Condition	<div style="display: inline-block; width: 10px; height: 10px; background-color: green; margin-right: 5px;"></div> Good
Commentary	

Pictures

E-15863-20200512141433.jpg



E-15863-20200512142425.jpg



E-15863-20200512142116.jpg

Custom Details**Actions****Action Summary:**

Replace

Action Type

Replacement

Life Safety / Code Related?

No

Adverse Effect on Security?

No

Risk of building shut down?

No

Accessibility Related?

No

Urgency of Action?

Low

Operation / Energy Savings?

N/A

Status

Not Specified

Funding Source**Cost**

\$10,563

Year

2041

Repeat Interval

30

Action: Commentary**G4020 - Site Lighting [2]****Discipline**

Building Sitework

Category

G4020 - Site Lighting

Element Number

2

Maintenance Type

Reactive

Replacement Cost

\$10,563

Last Major Action

2008

Location/Name

Exterior

Brief Description

Exterior building mounted lighting.

Overall Condition■ Good**Commentary**

Pictures

E-15864-20200512141448.jpg



E-15864-20200512142129.jpg

Custom Details**Actions**

Action Summary: Replace

Action Type	Replacement
Life Safety / Code Related?	No
Adverse Effect on Security?	No
Risk of building shut down?	No
Accessibility Related?	No
Urgency of Action?	Low
Operation / Energy Savings?	N/A
Status	Not Specified
Funding Source	
Cost	\$10,563
Year	2038
Repeat Interval	30
Action: Commentary	