



February 2, 2022

John Gilbert, AIA  
Facilities Branch – Division of District Support  
Kentucky Department of Education  
Office of Finance and Operations  
300 Sower Blvd, 4<sup>th</sup> Floor  
Frankfort, KY 40601

**Re: Waiver Request to Allow for 8 Instructional Areas to have no Natural Light  
Christian Co. - New Consolidated High School  
Schematic Design Review - Response  
BG 22-104**

Dear John:

We are writing on behalf of the Christian County School District to petition a waiver in accordance with 702 KAR 4:170, Part b, waivers:

Windows

The Christian County Board of Education has approved Schematic and Design Development plans for the above referenced project, based on a program that was achieved through multiple meetings with school district personnel. The plan of the building includes having multiple academy wings, with each having a set program, and a connective space that includes general purpose classroom that are shared between academies. In the course of planning the building in an efficient manner, there exists 8 instructional areas that do not have access to exterior walls and will not be able to be lit through borrowed light from large curtainwalls or storefront systems in close proximity to the classrooms. Through the course of developing construction documents, we will place Tubular Daylighting Devices in these instructional areas if possible, however this option may not be feasible.

Therefore, we are requesting a waiver to allow for no natural light in the following instructional areas if Tubular Daylighting Devices are not feasible: Classrooms A105, A106, A107 & K112; ROTC Classrooms C103 & C104, FSC Classroom D102 & Mac Lab E118. With the combination of General Ed Classrooms, Resource Rooms, CTE Classrooms and Labs, Science Labs and other instructional spaces, these 8 rooms represent approximately 5% of instructional spaces.

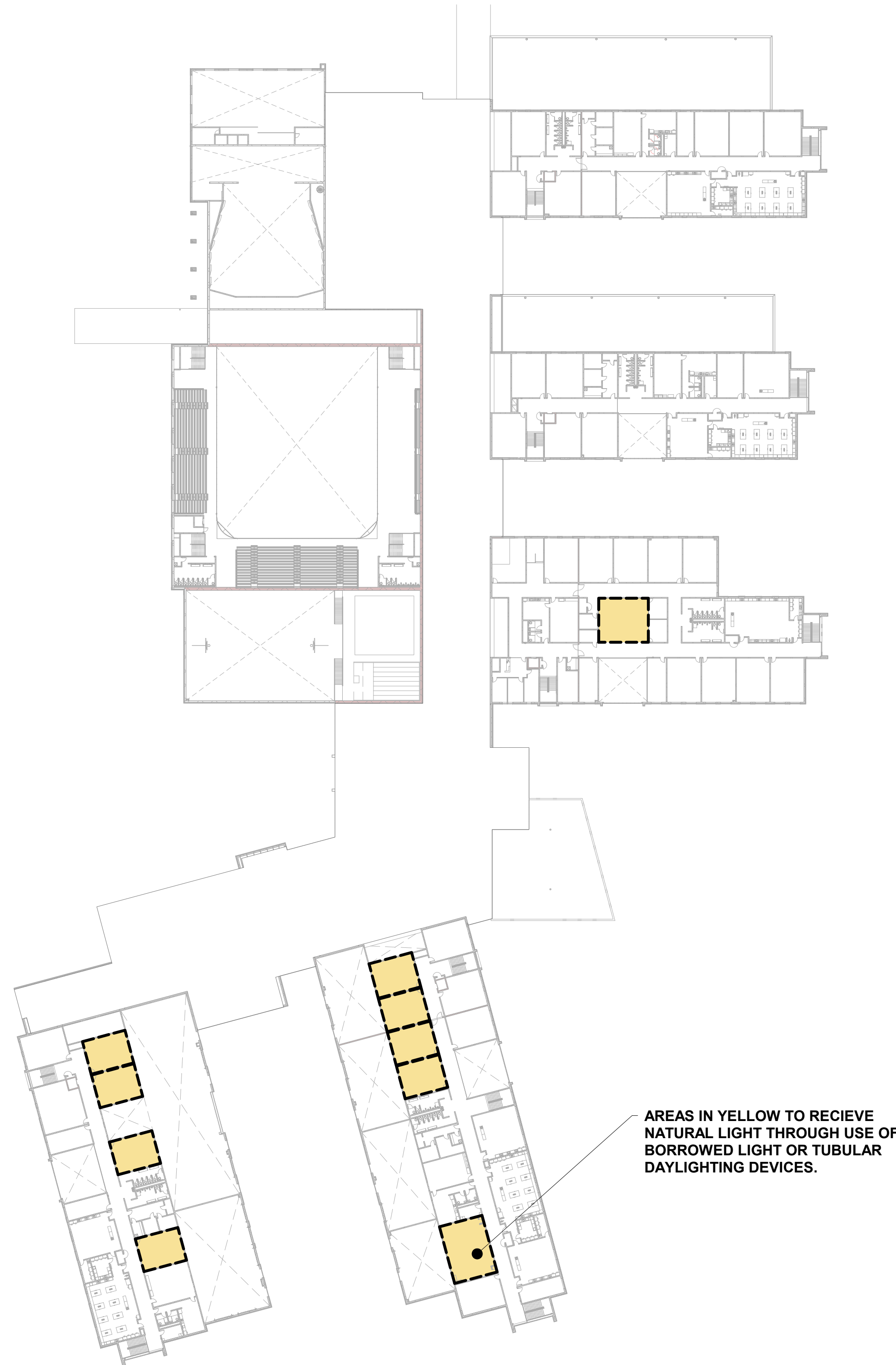
Thank you,

A handwritten signature in black ink, appearing to read "ERANG".

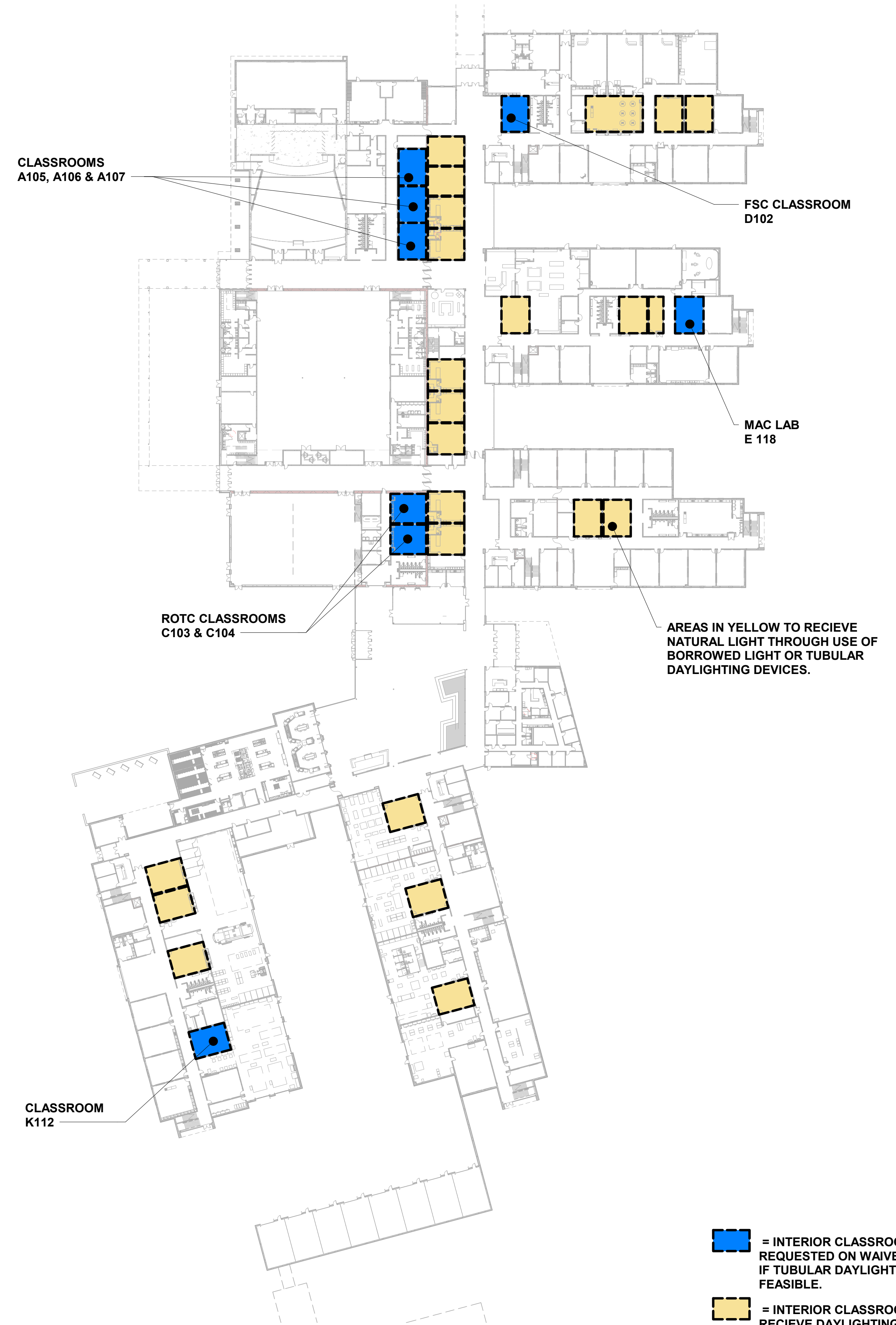
Eric Rang, AIA  
HAFER

CC: Christopher Bentzel, Christian County Public Schools  
Josh Hunt, Christian County Public Schools  
Jack Faber, Hafer

Attachment: Plan showing location of instructional areas with no access to Natural Light to be included in waiver.



**SECOND FLOOR PLAN**  
1" = 60'-0"



**FIRST FLOOR PLAN**  
1" = 60'-0"

- = INTERIOR CLASSROOMS THAT ARE REQUESTED ON WAIVER FOR EXCEPTION IF TUBULAR DAYLIGHT DEVICES ARE NOT FEASIBLE.
- = INTERIOR CLASSROOMS THAT WILL RECIEVE DAYLIGHTING THOUGH THE USE OF BORROWED LIGHT OR TUBULAR DAYLIGHTING DEVICES