



Dare to Dream



VISION

OUR VISION IS TO GRADUATE ENGAGED, RESILIENT CITIZENS WHO PURSUE THEIR PASSIONS, MAXIMIZE THEIR STRENGTHS, CONTRIBUTE TO THEIR COMMUNITY, AND ACHIEVE MEANINGFUL PURPOSE IN LIFE.

MISSION

OUR MISSION IS TO NURTURE, INSPIRE, AND EMPOWER THE NEXT GENERATION TO BE SUCCESSFUL CONTRIBUTORS IN AN EVER-CHANGING WORLD AND TO CREATE A BETTER FUTURE FOR ALL BY PROVIDING JOYFUL, AUTHENTIC, MEANINGFUL LEARNING EXPERIENCES AND INSTILLING HOPE.

CORE VALUES



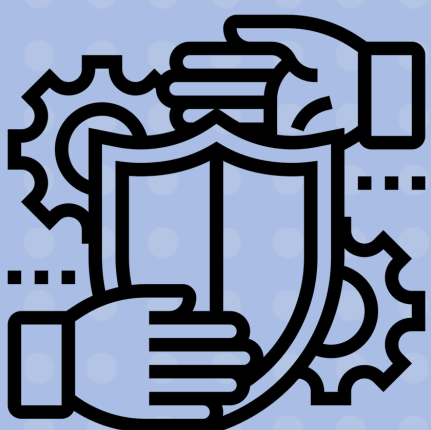
We value the pursuit of **excellence**, always striving to exceed expectations through goal setting, productive struggle, reflecting, and improving.



We value **dignity** and believe that it is our responsibility to honor the humanity in each unique individual, their strengths, their interests and to create a sense of self-worth for all.



We value a **community** that embraces building relationships by collaborating in a healthy culture that demonstrates generosity, celebrates diversity, honors inclusivity, and creates a sense of belonging for each individual.



We value **integrity** through acting responsibly, being transparent, and always choosing to do the right thing in an effort to build trust in ourselves and others.



We value meaningful **risk-taking** that drives innovation and creativity, in order to develop courageous individuals who take initiative and imagine new possibilities to positively impact their world.

PROFILE OF A *Patriot*



Resilient Learner

- Demonstrates mastery of academic skills
- Perseveres through difficulties
- Assumes risks as a natural part of learning
- Demonstrates initiative by setting goals for individual learning
- Invites and receives feedback in order to grow
- Demonstrates a growth mindset



Effective Communicator

- Speaks and writes intentionally and clearly with well-supported ideas
- Utilizes active listening techniques, summarizes, and asks clarifying questions
- Demonstrates awareness of audience and atmosphere and demonstrates the ability to adapt to the situation
- Utilizes multimedia or digital tools as appropriate
- Creates a purposeful and respectful response to the audience that demonstrates an understanding of proper ethics



Creative Problem Solver

- Recognizes a problem as simple or complex
- Deconstructs the problem into manageable parts and creates a plan
- Generates questions and ideas to explore
- Utilizes various innovative strategies to explore solutions
- Evaluates multiple perspectives
- Determines and analyzes the solution



Engaged Global Citizen

- Demonstrates respect and empathy for differences
- Recognizes how contributions and choices impact self and others
- Identifies and advocates for issues important to self and community
- Impacts community and the world in a positive way
- Implements safe, legal, and ethical decision-making



Accountable Collaborator

- Values individual contributions
- Seeks diverse perspectives and listens with empathy
- Gives, receives, and implements constructive feedback
- Contributes in such a way to support common goals and holds self and others accountable
- Works effectively in a team, challenging and encouraging team members

INSTRUCTIONAL MODEL

