

West Irvine Pavement Improvements

Irvine, Kentucky

for the

Estill County Board of Education

253 Main Street Irvine, Kentucky 40336
p 606.723.2181

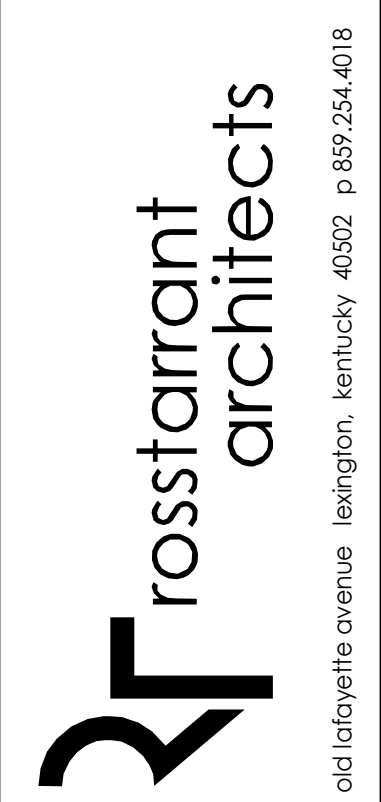
BG # 22-178
RTA # 2143



101 old lafayette avenue
lexington, kentucky 40502
p 859.254.4018
www.rosstarrant.com

enhancing education through great design

| INDEX OF DRAWINGS | |
|-------------------|----------------------------------|
| G1.0 | CODE REVIEW |
| SS1.0 | SURVEY |
| SD0.1 | EPSC PLAN |
| SD0.2 | SITE DEMOLITION PLAN |
| SD1.1 | SITE DEVELOPMENT AND LAYOUT PLAN |
| SD2.1 | SITE GRADING AND DRAINAGE PLAN |
| SD3.1 | SITE DETAILS |



COVER SHEET
WEST IRVINE PAVEMENT IMPROVEMENTS
FOR:
ESTILL COUNTY BOARD OF EDUCATION
IRVINE, KENTUCKY

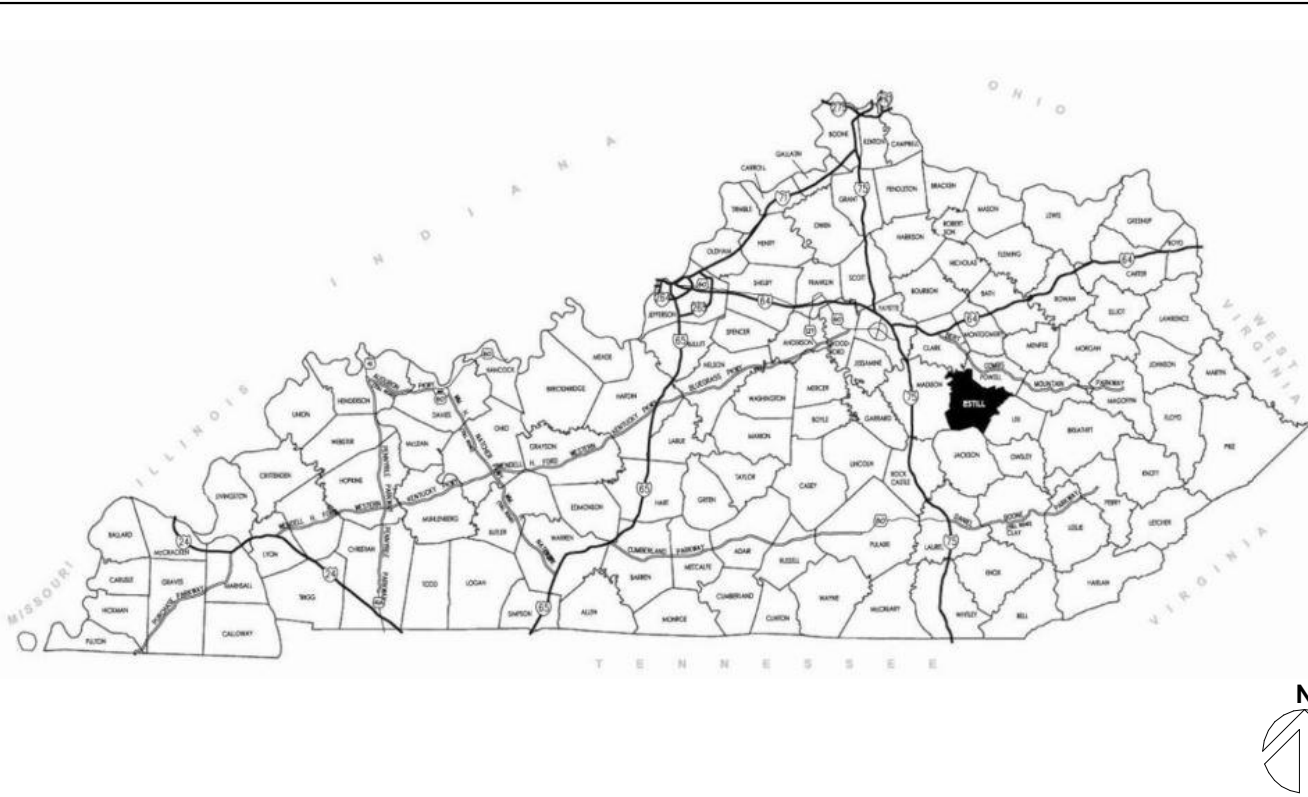
PROJECT SITE ADDRESS:

155 Riverview Rd,
Irvine, Kentucky 40336

VICINITY MAP



PROJECT VICINITY MAP



BG# 22-178

Project No: 2143
Drawn By: KJA
Rev'd By: JR/PF

| SHEET RELEASE | |
|---------------|--|
| 1 | |
| 2 | |
| 3 | |
| 4 | |
| 5 | |
| 6 | |
| 7 | |
| 8 | |

COPYRIGHT © 2021

CONSTRUCTION DOCUMENTS

G0.0

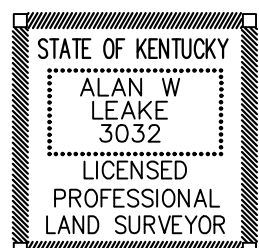
COVER SHEET
DATE ISSUED:
JANUARY 13, 2022

| SURVEY CONTROL POINTS | | | | |
|-----------------------|------------|------------|-----------|---------------|
| CP # | Northing | Easting | Elevation | Description |
| 1 | 3783685.55 | 5431237.41 | 659.47 | MAG NAIL SW |
| 2 | 3783509.80 | 5431024.27 | 663.14 | MAG NAIL CURB |
| 3 | 3783350.98 | 5431267.67 | 648.12 | IRON PIN SET |



2020 LIBERTY ROAD, SUITE 105
LEXINGTON, KY 40505
(859) 295-5518

CLIENT:
ESTILL COUNTY SCHOOL BOARD
253 MAIN ST.
IRVINE, KY 40336



SURVEY NOTES

THE PURPOSE OF THIS SURVEY IS TO PROVIDE SITE IMPROVEMENT & TOPOGRAPHIC INFORMATION ONLY. THIS DOCUMENT DOES NOT REPRESENT A BOUNDARY SURVEY, IS NOT INTENDED FOR RECORDING OR LAND TRANSFER AND IS NOT INTENDED TO COMPLY WITH 201 KAR 18:150.

THE NORTH MERIDIAN & VERTICAL DATUM SHOWN HEREON ARE BASED ON GPS OBSERVATIONS MADE USING A TRIMBLE R8 NETWORK RECEIVER USING C.O.R.S. STATION "VRS". THE HORIZONTAL DATUM IS KENTUCKY STATE PLANE. COORDINATE SYSTEM SINGLE ZONE (NAD 83) GRID NORTH. THE VERTICAL DATUM IS NAVD 88 (GEOID12B). THIS SURVEY CONTROL WAS ESTABLISHED ON NOVEMBER 1, 2021.

THIS SURVEY WAS CONDUCTED BY THE METHOD OF RANDOM TRAVERSE WITH SIDESHOTS. THE PRECISION RATIO OF THE TRAVERSE WAS 1:111,982 AND WAS NOT ADJUSTED.

THIS PROPERTY IS SUBJECT TO ALL EASEMENTS AND RIGHTS OF WAY BOTH RECORDED AND UNRECORDED.

DATE OF SURVEY: NOVEMBER 2, 2021

DISCLAIMERS

THIS SURVEY WAS CONDUCTED WITHOUT THE BENEFIT OF A TITLE ABSTRACT. NO LIABILITY IS ASSUMED BY THE SURVEYOR FOR ANY LOSS THAT MAY BE DISCOVERED BY AN ABSTRACT OR TITLE SEARCH.

THE SUBSURFACE UTILITY LOCATIONS AND DESCRIPTIONS SHOWN HEREON WERE DETERMINED TO THE EXTENT POSSIBLE BY SURFACE OBSERVATIONS. LOCATION MARKINGS PROVIDED BY THE UNDERGROUND DETECTIVE (TUD) AND LOCATION MARKINGS PLACED BY KY 811 LOCATION SERVICE (TICKET NUMBER 2110271445, DATE 10/27/2021). LINES SHOWN MAY VARY FROM THE LOCATIONS OUTLINED AND ADDITIONAL UTILITIES AND OR EASEMENTS MAY EXIST. NO LIABILITY IS ASSUMED BY THE SURVEYOR FOR ANY LOSS OR DAMAGE THAT MAY OCCUR DURING DESIGN OR CONSTRUCTION.

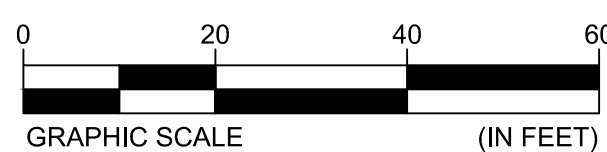
LAND SURVEYORS CERTIFICATION
I DO HEREBY CERTIFY THAT THIS EXHIBIT WAS PREPARED UNDER MY DIRECTION AND THAT, TO THE BEST OF MY KNOWLEDGE AND BELIEF, THE INFORMATION SHOWN HEREON IS TRUE AND ACCURATE.

ALAN W. LEAKE, P.L.S. #3032 12/01/2021
DATE

LEGEND

- PL PL APPROXIMATE RIGHT OF WAY LINE (FROM PREVIOUS SURVEY)
- 640- MAJOR CONTOUR
- 641- MINOR CONTOUR
- == == STORM SEWER (FROM SURFACE OBSERVATION)
- SAN - SAN - SANITARY LINE (FROM SURFACE OBSERVATION)
- UGE - UGE - UNDERGROUND ELECTRIC LINE (FROM TUD)
- W - W - WATERLINE (FROM PREVIOUS SURVEY)
- G - G - GAS LINE (FROM KY 811)
- AU - AU - AERIAL UTILITY (FROM SURFACE OBSERVATIONS ONLY)
- X - X - FENCE LINE
- - - GRAVEL EDGE
- - - BUILDING OVER-HANG
- ~ ~ ~ TREE LINE

- ⊙ STORM SEWER DROP INLET
- ⋈ GUY WIRE
- ▲ CP # CONTROL POINT
- ⊙ SANITARY MANHOLE
- ⊙ LIGHT POLE
- ⊙ UTILITY POLE
- ⊙ CLEANOUT (STORM OR SANITARY)
- ⊙ TREE (NOT TO SCALE)
- ⊙ SIGN
- ⊙ FLAG POLE
- ⊙ DOWNSPOUT TO STORM DRAIN
- ⊙ DESCRIPTION FROM PREVIOUS SURVEY



TOPOGRAPHIC SURVEY

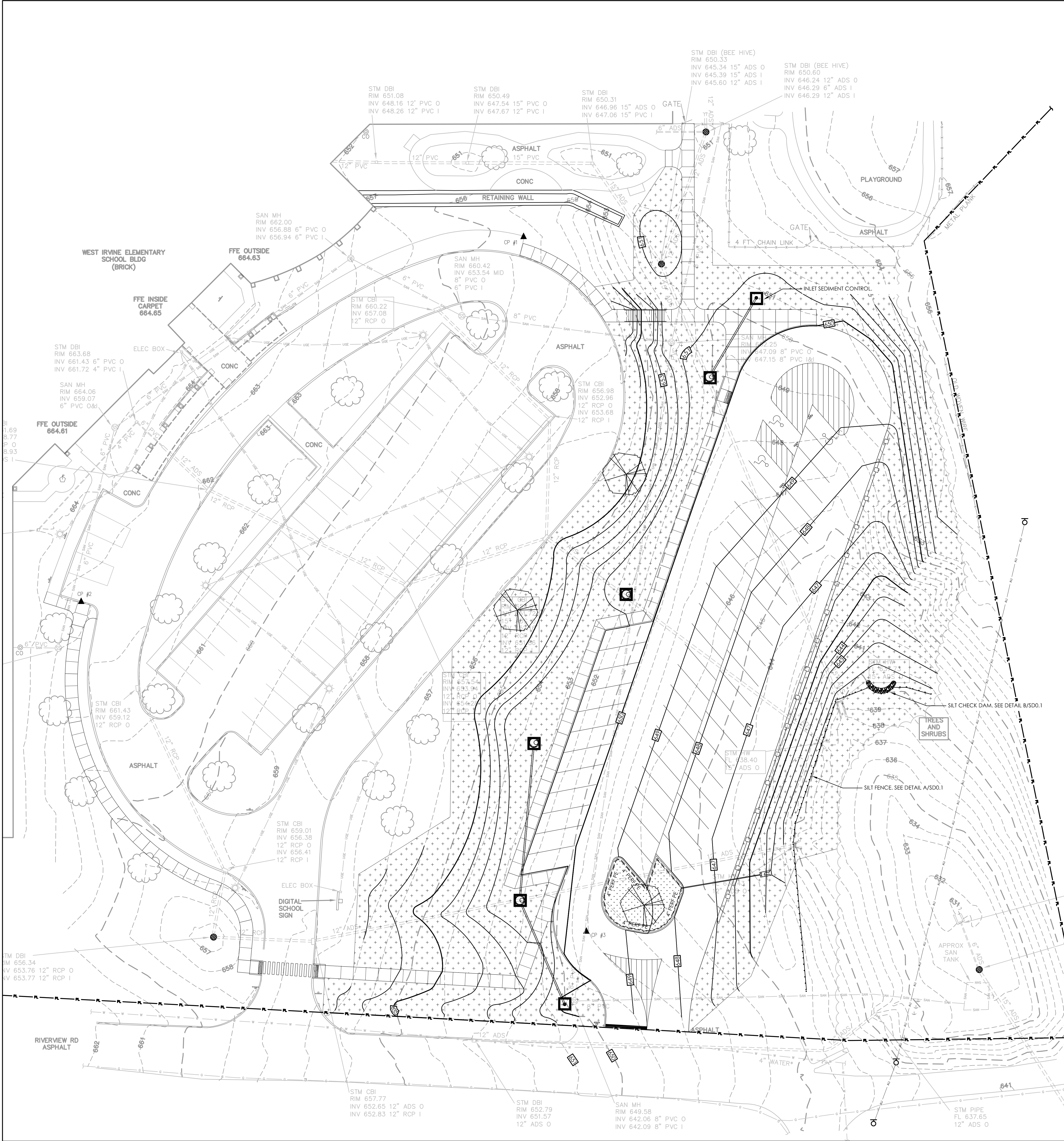
WEST IRVINE ELEMENTARY SCHOOL
155 RIVER ROAD
IRVINE, KENTUCKY 40336

PROJECT NUMBER

218097

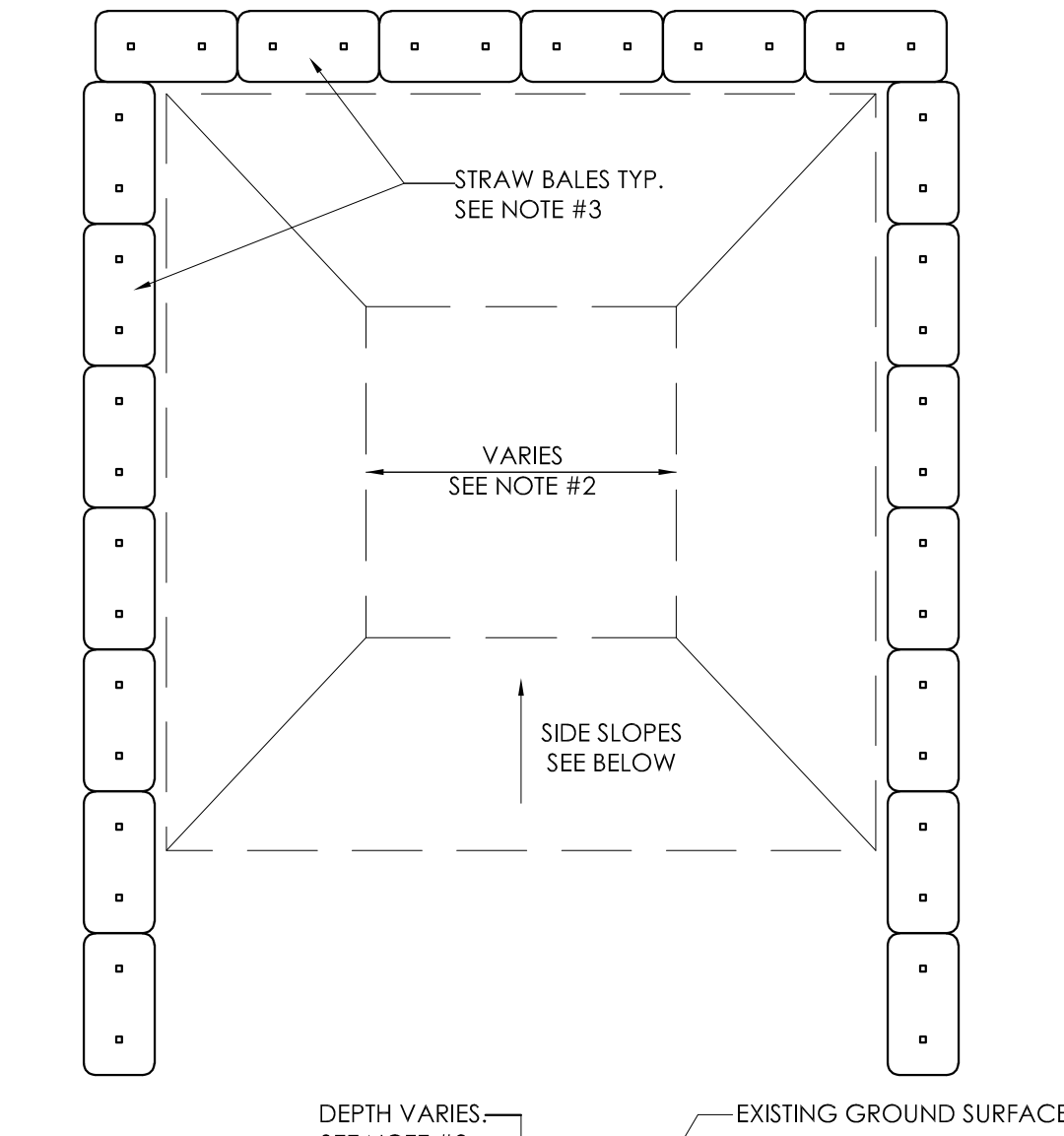
SHEET NUMBER

1

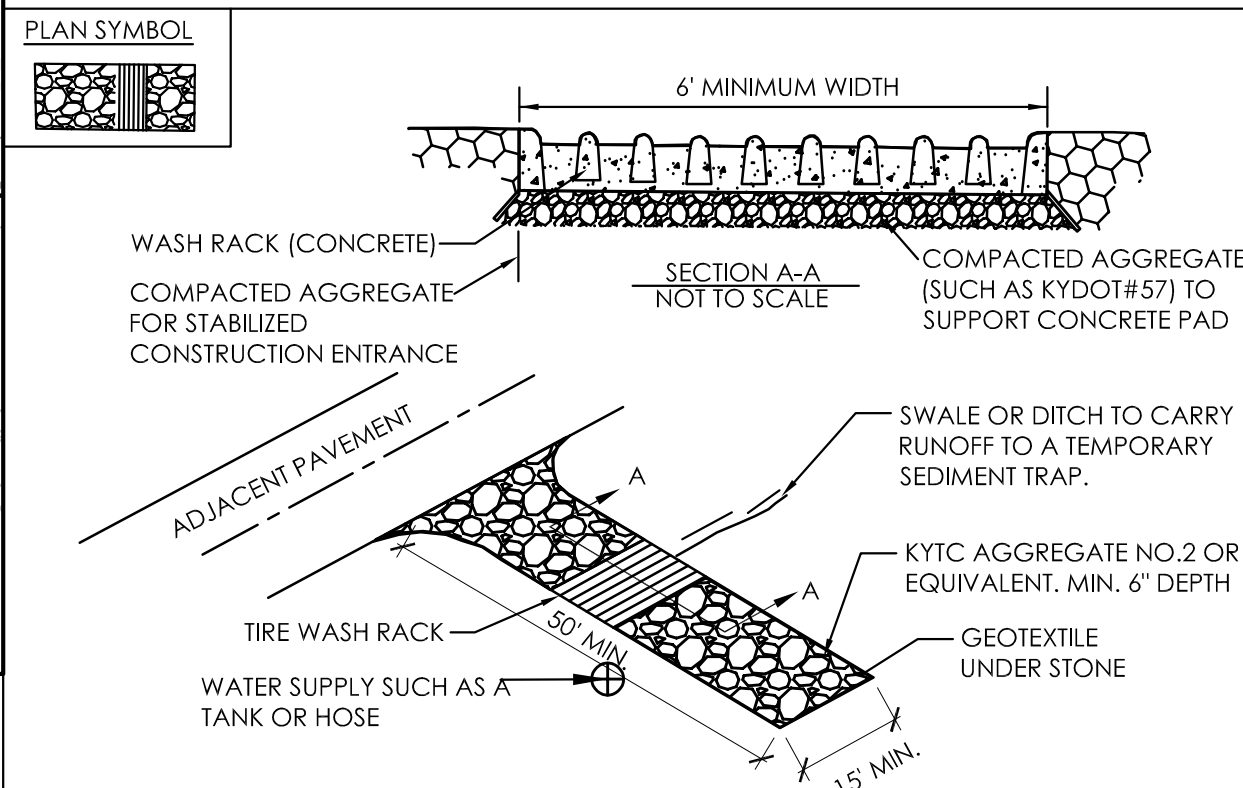


EROSION POLLUTION AND SEDIMENT CONTROL PLAN
SCALE: 1"=20'

- CONCRETE WASHOUT AREA(S) SHALL BE INSTALLED PRIOR TO ANY CONCRETE PLACEMENT ON SITE. THE CONCRETE WASHOUT AREA SHALL BE ENTIRELY SELF CONTAINED. LOCATION TO BE COORDINATED WITH THE CONSTRUCTION MANAGER AND THE OWNER.
- THE CONTRACTOR SHALL SUBMIT THE DESIGN, LOCATION AND SIZING OF THE CONCRETE WASHOUT AREAS TO THE ARCHITECT FOR APPROVAL PRIOR TO ANY CONCRETE PLACEMENT. COORDINATE LOCATION WITH THE EROSION POLLUTION AND SEDIMENT CONTROL PLAN.
LOCATION: WASHOUT AREA(S) ARE TO BE LOCATED AT LEAST 50-FEET FROM AND STREAM, WETLAND, STORM DRAINS OR OTHER SENSITIVE RESOURCE. THE FLOOD CONTINGENCY PLAN MUST ADDRESS THE CONCRETE WASHOUT IF THE WASHOUT IS TO BE LOCATED WITHIN THE FLOOD PLANE.
SIZE: THE WASHOUT MUST HAVE SUFFICIENT VOLUME TO CONTAIN ALL LIQUID AND CONCRETE WASTE GENERATED BY WASHOUT OPERATIONS INCLUDING, BUT NOT LIMITED TO OPERATIONS ASSOCIATED WITH GROUT AND MORTAR.
- SURFACE DISCHARGE IS UNACCEPTABLE. THEREFORE, STRAW BALES OR OTHER CONTROL MEASURES, AS APPROVED BY THE ARCHITECT, SHOULD BE USED AROUND THE PERIMETER OF THE CONCRETE WASHOUT AREA FOR CONTAINMENT.
- SIGNS SHOULD BE PLACED AT THE CONSTRUCTION ENTRANCE, AT THE CONCRETE AREA(S) AND ELSEWHERE AS NECESSARY TO CLEARLY INDICATE THE LOCATION OF THE CONCRETE WASHOUT TO OPERATORS OF CONCRETE TRUCKS AND PUMP RIGS. WASHOUT AREA(S) SHOULD BE FLAGGED WITH SAFETY FENCING.
- WASHOUT AREA(S) ARE TO BE INSPECTED, CLEANED AND REPAIRED AFTER EACH RAIN EVENT OF 0.5-INCHES OR MORE, BUT NO LESS THAN ONCE A WEEK FOR STRUCTURAL INTEGRITY, ADEQUATE HOLDING CAPACITY AND CHECKED FOR LEAKS, TEARS OR OVERFLOWS.
- HARDENED CONCRETE WASTE SHOULD BE REMOVED AND DISPOSED OF IN A MANNER CONSISTENT WITH ALL APPLICABLE LAWS, REGULATIONS AND GUIDELINES WHEN THE WASTE HAS ACCUMULATED TO HALF OF THE CONCRETE WASHOUTS HEIGHT.



CONCRETE WASHOUT AREA
SCALE: 1"=10'



CONSTRUCTION ENTRANCE
SCALE: 1"=10'

GENERAL SITE NOTES

- THE SITE PLANS WERE PREPARED BASED UPON TOPOGRAPHIC SURVEYS BY S&ME, 2020 LIBERTY ROAD, SUITE 105, LEXINGTON, KY 40505. REFER TO SITE SURVEY SHEETS.
- THE CONTRACTOR SHALL FIELD VERIFY ALL EXISTING SITE FEATURES AND CONDITIONS. REPORT ANY DISCREPANCIES TO THE ARCHITECT PRIOR TO THE START OF CONSTRUCTION.
- THE ARCHITECT AND ARCHITECT'S CONSULTANTS SHALL HAVE NO RESPONSIBILITY FOR THE DISCOVERY, PRESENCE, HANDLING, REMOVAL OR DISPOSAL OF, OR EXPOSURE OF PERSONS TO HAZARDOUS MATERIALS IN ANY FORM AT THE PROJECT SITE, INCLUDING BUT NOT LIMITED TO ASBESTOS, ASBESTOS PRODUCTS, POLYCHLORINATED BIPHENYL (PCB) OR OTHER TOXIC SUBSTANCES.
- THE CONTRACTOR SHALL USE EXTREME CARE IN WORKING AROUND EXISTING OVERHEAD AND UNDERGROUND UTILITIES. MEASURES SHOULD BE TAKEN TO PROTECT ALL UTILITIES FROM DAMAGE DURING CONSTRUCTION.
- SEE EROSION POLLUTION AND SEDIMENT CONTROL PLAN ON SD0.1 FOR RECOMMENDED BEST MANAGEMENT PRACTICES INFORMATION AND SEDIMENT CONTROLS.
- REFER TO CONSTRUCTION MANAGER'S PLANS AND SPECIFICATIONS FOR INFORMATION REGARDING CONSTRUCTION SCHEDULE/SEQUENCING, CONSTRUCTION FENCING/STAGING, AND LEED SPECIFIC REQUIREMENTS.

SITE BMP NOTES

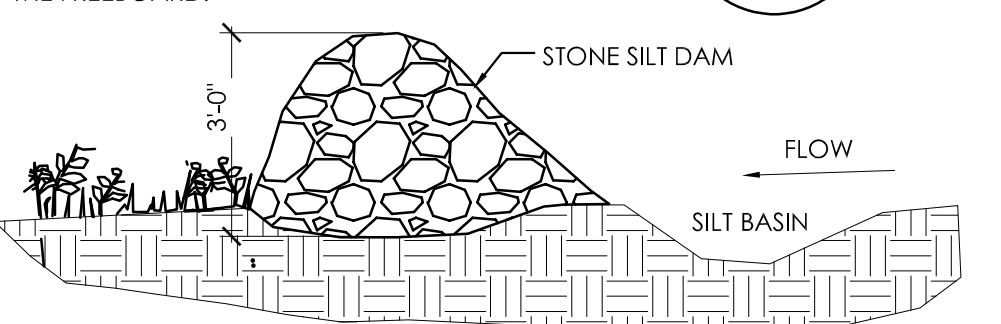
- CONTRACTOR IS TO PROVIDE ALL KPDES PERMITS, NOTICES OF INTENT (NOIS) AND NOTICES OF TERMINATION INCLUDING EROSION AND SEDIMENT CONTROL PLANS FOR ALL PHASES OF CONSTRUCTION. ALL KPDES AND RELATED DIVISION OF WATER REQUIREMENTS SHALL BE THE RESPONSIBILITY OF THE CONTRACTOR UNTIL THE PROJECT IS CLOSED OUT AND THE NOTICE OF TERMINATION APPROVED.
- SEDIMENT CONTROL FENCING SHOWN AND REFERENCES TO SEDIMENT CONTROLS AT STORM WATER STRUCTURES AND ELSEWHERE ON THE DOCUMENTS ARE NOT TO BE USED FOR DIVISION OF WATER REQUIREMENTS. THESE REFERENCES ARE ONLY REQUIRED BY THE DESIGNER FOR PROPER MAINTENANCE OF THE STORM WATER SYSTEM AND TO MINIMIZE CLEANING OF THE SYSTEM AND PAVEMENTS.
- EXISTING VEGETATION IS TO BE LEFT INTACT UNTIL CONSTRUCTION IN THAT PARTICULAR LOCATION IS REQUIRED. SOIL STABILIZATION PRACTICES (SEEDING, MULCHING, ETC.) ARE TO BEGIN WITHIN 14 DAYS OF PERMANENT COMPLETION OR TEMPORARY SILT (21 DAYS OR MORE) OF WORK IN ANY PARTICULAR AREA.
- PERIMETER SEDIMENT AND EROSION CONTROLS ARE TO BE INSTALLED PRIOR TO THE START OF SITE CLEARING AND GRUBBING. EROSION CONTROLS SHALL BE IN ACCORDANCE WITH KENTUCKY DEPARTMENT OF HIGHWAY STANDARDS. CONTROL SHALL BE ACCOMPLISHED BY USE OF INTERCEPTOR DITCHES, DITCH SILT CHECKS, TEMPORARY SEEDING AND OTHER MEASURES AS MAY BE EFFECTIVE IN ACHIEVING THE DESIRED EFFECT. SILT FENCE SHALL BE INSTALLED TO PREVENT EROSION AND WASH-OFF ONTO WALKS, PAVEMENTS AND ALL ADJOINING PROPERTIES.
- INSTALL SEDIMENT CONTROL FENCE OR SEDIMENT TRAPS AROUND ALL STORM WATER INLETS AND MAINTAIN UNTIL VEGETATION IS ESTABLISHED OR AREA PAVED AS APPROVED BY THE ARCHITECT. STORM WATER INLET PROTECTION IS TO BE INSTALLED IMMEDIATELY AFTER INSTALLATION OF THE STRUCTURES. REMOVE PROTECTIONS AT THE COMPLETION OF THE PROJECT WHEN CONDITIONS NO LONGER WARRANT THEIR USE. SEE THIS SHEET FOR DETAILS.
- TYPICAL SILT FENCE AND SEDIMENT TRAP INSTALLATION DETAILS ARE SHOWN ON THIS SHEET. SEE KDOH STANDARDS FOR INFORMATION CONCERNING THE STONE SILT CHECKS.
- SEDIMENT CONTROLS ARE TO BE INSPECTED, CLEANED AND REPAIRED AFTER EACH RAIN EVENT OF 0.5 INCHES OR MORE, BUT NO LESS THAN ONCE PER WEEK. A LOG OF INSPECTIONS AND CLEANING IS TO BE KEPT ON SITE.
- THE LOCATIONS OF SEDIMENT CONTROLS SHOWN ARE FOR GENERAL PROTECTION PRACTICES AND NOT AS PART OF A BMP PLAN. IF CONSTRUCTION ACTIVITIES PRODUCE CONDITIONS THAT REQUIRE ADDITIONAL CONTROLS, IT IS THE CONTRACTORS RESPONSIBILITY TO PROVIDE, INSTALL AND MAINTAIN THE CONTROLS UNTIL CONDITIONS NO LONGER WARRANT THEIR USE.
- ALL STORM DRAINAGE CATCH BASINS, CURB INLETS, AND JUNCTIONS BOXES ARE TO RECEIVE PROTECTION FROM SEDIMENTATION. AT A MINIMUM A PERIMETER SILT FENCE SHOULD BE INSTALLED AROUND THE DRAINAGE STRUCTURE AND INSTALLED UNDER THE GRATE.

PLAN SYMBOL



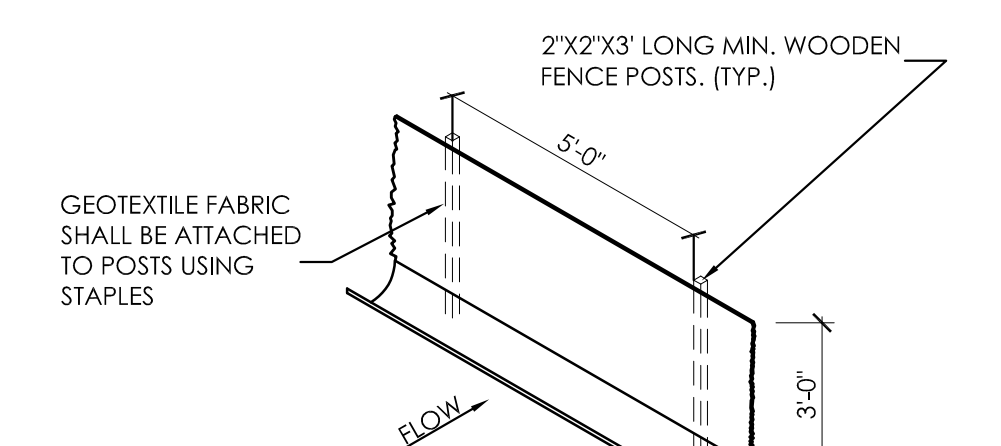
NOTES:

- 1.) STONE IS TO BE #3 OR LARGER.
- 2.) IF THE TRAP IS PLACED AROUND AN DROP INLET STRUCTURE, A SILT BASIN IS NOT REQUIRED.
- 3.) ADDITIONAL STONE IS TO BE ADDED AS IT BECOMES SILTED AND LESS THAN 18" OF STONE FREEBOARD IS PRESENT. IF A SILT BASIN IS PRESENT, IT CAN BE CLEANED INSTEAD OF ADDING STONE TO MAINTAIN THE FREEBOARD.



SILT CHECK DAM
SCALE: 1"=10'

SCALE: 1"=10'



NOTES:

- 1.) THE BOTTOM 12 INCHES OF THE FABRIC SHALL BE BURIED IN A 6" TRENCH CUT INTO THE GROUND COVERED BY 6" OF FILL MATERIAL TO PREVENT SEDIMENT FROM ESCAPING UNDER THE FENCE. ALL EARTHWORK SHALL BE ON THE UPSTREAM SIDE OF THE FENCE.

SILT FENCE DETAIL

SCALE: 1"=10'

BMP LEGEND

- SEDIMENT CONTROL FENCE, ADDITIONAL FENCE MAY BE REQUIRED AT OTHER AREAS DURING CONSTRUCTION. SEE DETAIL A/SD0.1
- SILT CHECK DAM - SEE DETAIL B/SD0.1
- CONSTRUCTION ENTRANCE - SEE DETAIL C/SD0.1
- INLET SEDIMENT CONTROL

NOT FOR
CONSTRUCTION

EROSION POLLUTION AND SEDIMENT CONTROL PLAN
WEST IRVINE INTERMEDIATE SCHOOL PAVEMENT IMPROVEMENTS
FOR:
ESTILL COUNTY BOARD OF EDUCATION
397 ENGINEER DR., IRVINE, KY 40336

BG# 22-178

Project No: 2143

Drawn By:

Rev'd By:

SHEET RELEASE

1

2

3

4

5

6

7

8

COPYRIGHT © 2021

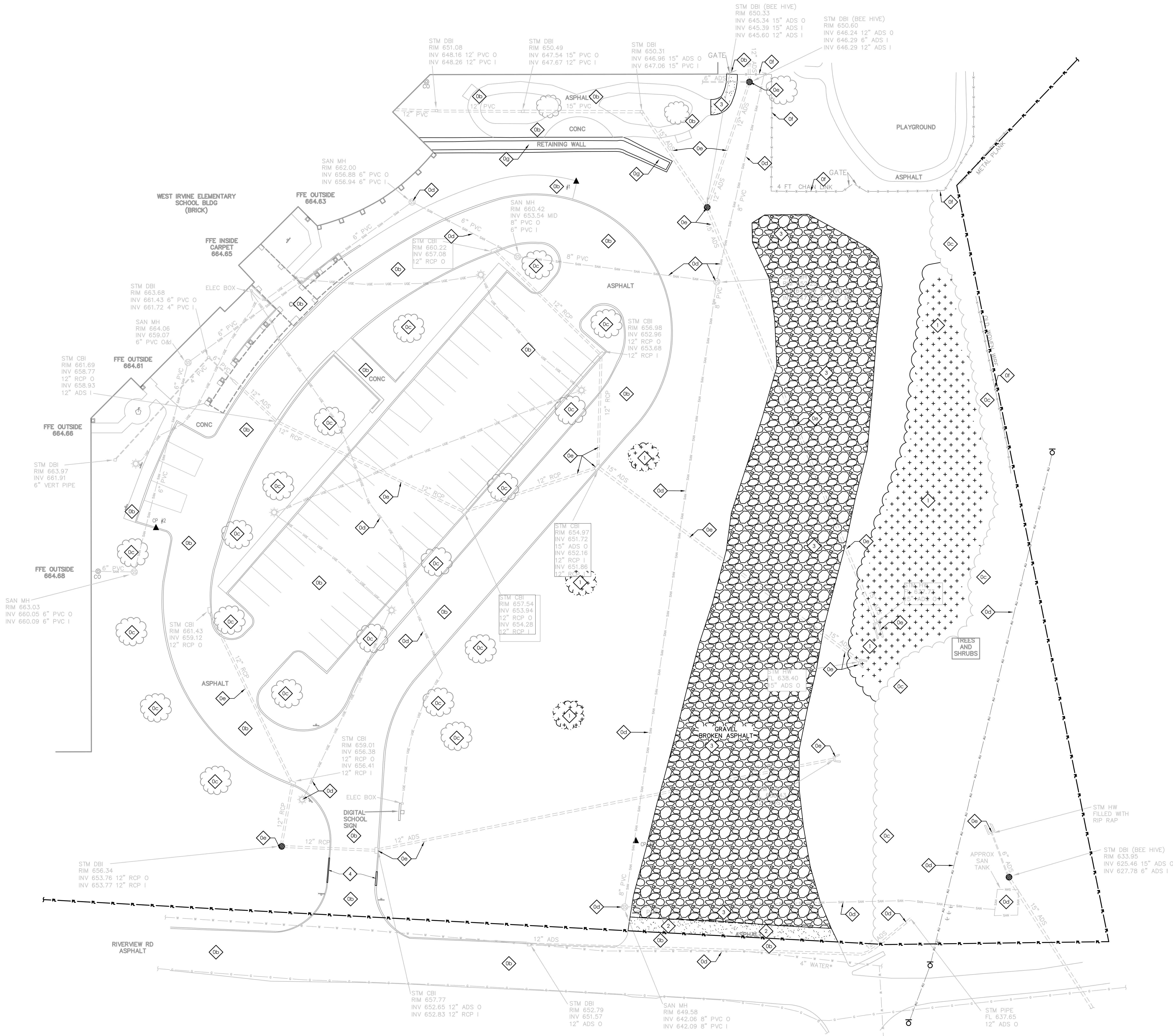
CONSTRUCTION DOCUMENTS

DATE ISSUED:
JANUARY 13, 2022

SD0.1

rosrarrant
architects

101 old louisville avenue | lexington, kentucky 40502 | p 502.254.4018



SITE DEMOLITION PLAN

SCALE: 1"=20'

A

SD0.1



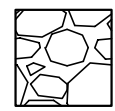
GENERAL SITE NOTES

1. THE SITE PLANS WERE PREPARED BASED UPON TOPOGRAPHIC SURVEYS BY S&ME, 2020 LIBERTY DRIVE, SUITE 105, LEXINGTON, KY 40505. REFER TO SITE SURVEY SHEETS.
2. THE CONTRACTOR SHALL FIELD VERIFY ALL EXISTING SITE FEATURES AND CONDITIONS. REPORT ANY DISCREPANCIES TO THE ARCHITECT PRIOR TO THE START OF CONSTRUCTION.
3. THE ARCHITECT AND ARCHITECT'S CONSULTANTS SHALL HAVE NO RESPONSIBILITY FOR THE DISCOVERY, PRESENCE, HANDLING, REMOVAL OR DISPOSAL OF, OR EXPOSURE OF PERSONS TO HAZARDOUS MATERIALS IN ANY FORM AT THE PROJECT SITE, INCLUDING BUT NOT LIMITED TO ASBESTOS, ASBESTOS PRODUCTS, POLYCHLORINATED BIPHENYL (PCB) OR OTHER TOXIC SUBSTANCES.
4. THE CONTRACTOR SHALL USE EXTREME CARE IN WORKING AROUND EXISTING OVERHEAD AND UNDERGROUND UTILITIES. MEASURES SHOULD BE TAKEN TO PROTECT ALL UTILITIES FROM DAMAGE DURING CONSTRUCTION.
5. SEE EROSION POLLUTION AND SEDIMENT CONTROL PLAN FOR RECOMMENDED BEST MANAGEMENT PRACTICES INFORMATION AND SEDIMENT CONTROLS.

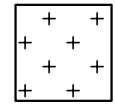
SITE DEMOLITION TAGS

- 0 EXISTING TO REMAIN. PROTECT THROUGHOUT CONSTRUCTION.
- [a] BUILDING TO REMAIN UNLESS OTHERWISE NOTED ON ARCHITECTURAL PLANS. NO UTILITIES TO THESE FACILITIES ARE TO BE REMOVED UNLESS NEW PERMANENT UTILITY IS PROVIDED PRIOR TO DEMOLITION.
- [b] PAVEMENT TO REMAIN - PATCH/REPAIR WHERE DAMAGED BY CONSTRUCTION. SAW-CUT TO PROVIDE CLEAN EDGE. CONCRETE PAVING TO BE SAW-CUT BACK TO NEAREST UNDAUNAGED CONTROL OR ISOLATION JOINT. MATCH NEW ADJACENT PAVEMENT TO EXISTING PAVEMENT ELEVATIONS.
- [c] TREE/VEGETATION TO REMAIN.
- [d] UTILITY TO REMAIN.
- [e] STORM LINE/STRUCTURE TO REMAIN.
- [f] FENCING TO REMAIN.
- [g] RETAINING WALL TO REMAIN.
- 1 DEMOLISH AND REMOVE EXISTING TREES/BRUSH. COMPLETELY REMOVE ALL STUMPS.
- 2 DEMOLISH AND REMOVE EXISTING ASPHALT PAVEMENT AND AGGREGATE BASE.
- 3 DEMOLISH AND REMOVE EXISTING AGGREGATE PAVEMENT.
- 4 DEMOLISH AND REMOVE EXISTING CONCRETE CURB. SAWCUT TO NEAREST CONTROL JOINT.

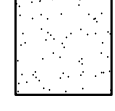
DEMOLITION LEGEND



GRAVEL PAVEMENT DEMOLITION



TREE/BRUSH DEMOLITION



ASPHALT PAVEMENT DEMOLITION

NOT FOR
CONSTRUCTION

SITE DEMOLITION PLAN
WEST IRVINE INTERMEDIATE SCHOOL PAVEMENT IMPROVEMENTS
FOR:
ESTILL COUNTY BOARD OF EDUCATION
397 ENGINEER DR., IRVINE, KY 40336

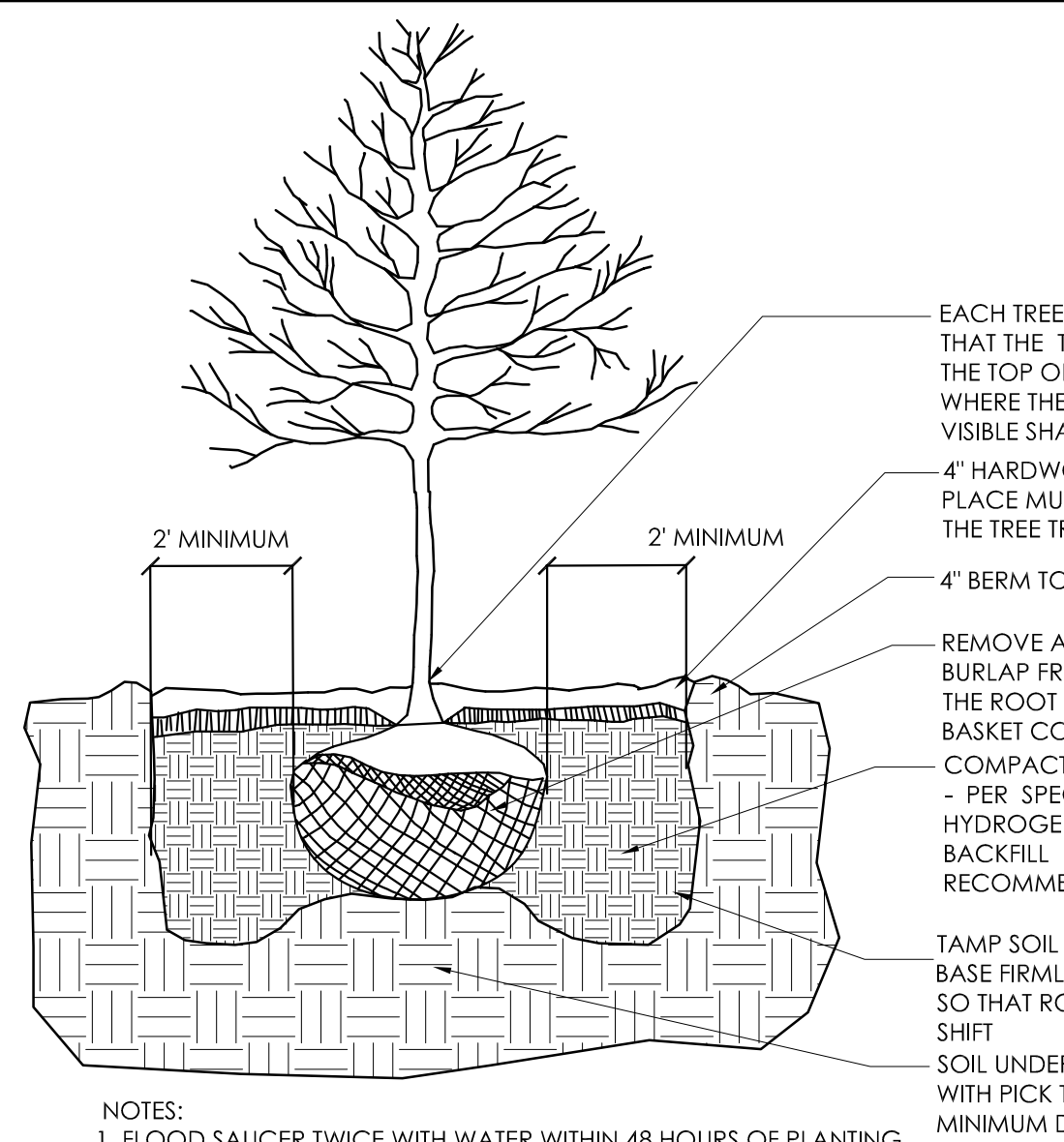
BG# 22-178
Project No: 2143
Drawn By:
Rev'd By:

| SHEET RELEASE | |
|---------------|--|
| 1 | |
| 2 | |
| 3 | |
| 4 | |
| 5 | |
| 6 | |
| 7 | |
| 8 | |

COPYRIGHT: © 2021
CONSTRUCTION DOCUMENTS

SD0.2

DATE ISSUED:
JANUARY 13, 2022



- NOTES:
1. FLOOD SAUCER TWICE WITH WATER WITHIN 48 HOURS OF PLANTING.
 2. DO NOT HEAVILY PRUNE THE TREE AT PLANTING. PRUNE ONLY CROSSOVER LIMBS, CO-DOMINANT LEADERS, AND BROKEN OR DEAD BRANCHES. DO NOT REMOVE THE TERMINAL BUDS OF BRANCHES THAT EXTEND TO THE EDGE OF THE CROWN.
 3. DO NOT USE TREE WRAP.

TREE PLANTING DETAIL

SCALE: 1"=8'

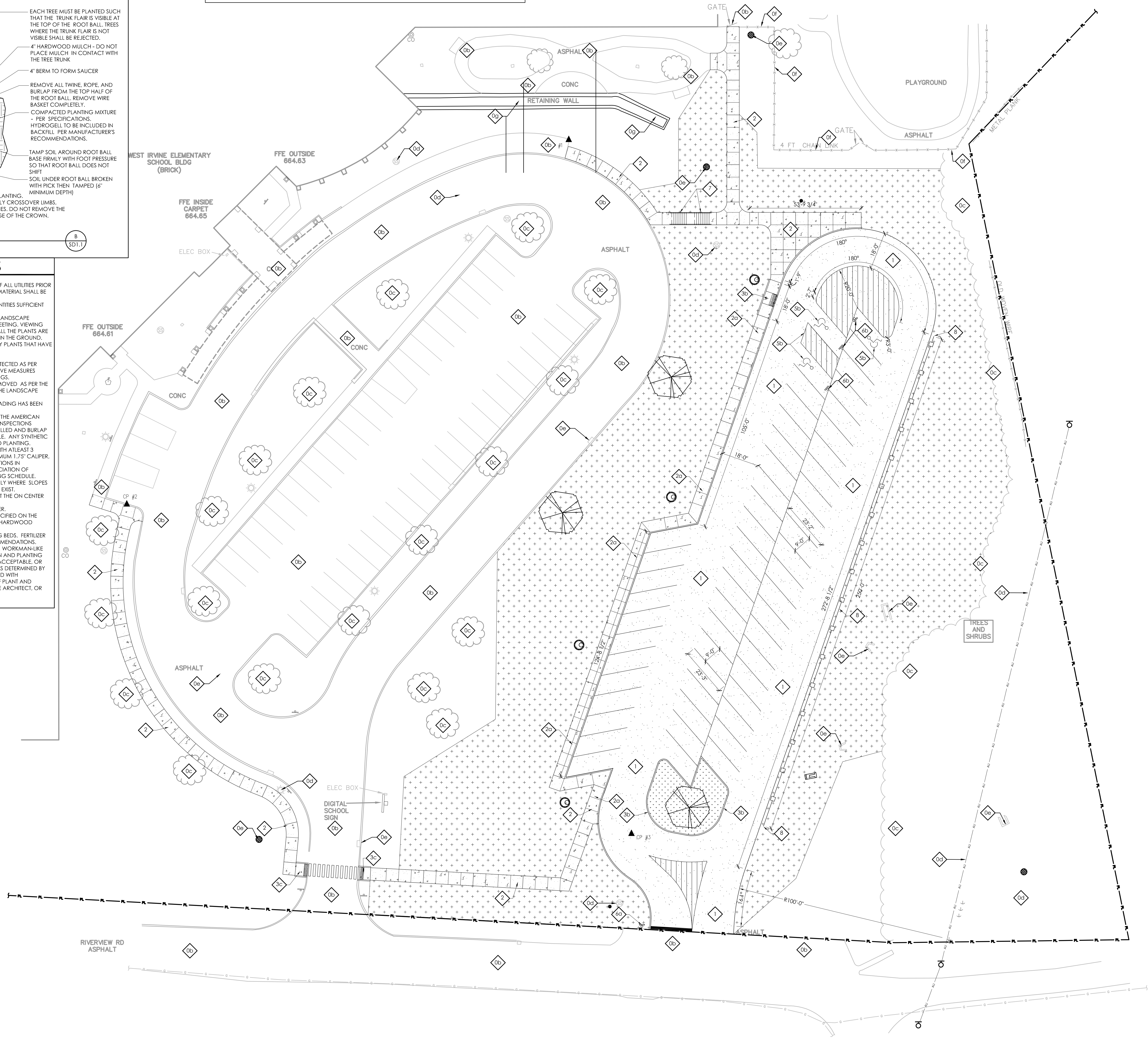
LANDSCAPE NOTES

1. THE CONTRACTOR SHALL LOCATE AND VERIFY THE EXISTENCE OF ALL UTILITIES PRIOR TO STARTING WORK. ANY CONFLICTS IN LOCATION OF PLANT MATERIAL SHALL BE REPORTED TO THE LANDSCAPE ARCHITECT IMMEDIATELY.
2. THE CONTRACTOR SHALL SUPPLY ALL PLANT MATERIALS IN QUANTITIES SUFFICIENT TO COMPLETE THE PLANTING SHOWN ON ALL DRAWINGS.
3. SCHEDULE A REVIEW OF THE PLANTS TO BE INSTALLED WITH THE LANDSCAPE ARCHITECT. PROVIDE AT LEAST 7 DAYS ADVANCE NOTICE OF MEETING. VIEWING CAN EITHER BE CONDUCTED AT THE STORAGE NURSERY ONCE ALL THE PLANTS ARE PURCHASED, OR ON-SITE PRIOR TO ANY PLANTS BEING PLACED IN THE GROUND. THE LANDSCAPE ARCHITECT RESERVES THE RIGHT TO REJECT ANY PLANTS THAT HAVE NOT BEEN VIEWED PRIOR TO BEING PLACED IN THE GROUND.
4. PRESERVATION AND REMOVAL OF EXISTING TREES:
 - A) EXISTING TREES DESIGNATED TO BE PRESERVED SHALL BE PROTECTED AS PER DETAILS AND THE CONTRACT SPECIFICATIONS. ALL PROTECTIVE MEASURES SHALL BE CARRIED AS PER THE SPECIFICATIONS AND DRAWINGS.
 - B) ALL EXISTING TREES DESIGNATED FOR REMOVAL SHALL BE REMOVED AS PER THE CONTRACT SPECIFICATIONS AND ONLY BY PERMISSION OF THE LANDSCAPE ARCHITECT.
5. NO PLANT SHALL BE PUT INTO THE GROUND BEFORE ROUGH GRADING HAS BEEN FINISHED AND APPROVED BY THE LANDSCAPE ARCHITECT.
6. ALL PLANT MATERIALS SHALL CONFORM TO THE STANDARDS OF THE AMERICAN ASSOCIATION OF NURSERMEN AND SHALL HAVE PASSED ANY INSPECTIONS REQUIRED UNDER STATE REGULATIONS. ALL PLANTS SHALL BE BALLED AND BURLAP WRAPPED UNLESS OTHERWISE NOTED IN THE PLANTING SCHEDULE. ANY SYNTHETIC WRAPPING AND ALL CONTAINERS SHALL BE REMOVED PRIOR TO PLANTING.
7. ALL SHRUBS AND HEDGES SHALL BE AT LEAST 2 FEET IN HEIGHT WITH AT LEAST 3 CANES OR LARGER. ALL SINGLE STEM TREES SHALL HAVE A MINIMUM 1.75" CALIPER, UNLESS OTHERWISE NOTED. PLANTS SHOULD MEET THESE CONDITIONS IN ACCORDANCE WITH THE STANDARDS OF THE AMERICAN ASSOCIATION OF NURSERMEN, AND THE SPECIFICATIONS NOTED ON THE PLANTING SCHEDULE.
8. ANY STAKING, WIRING, AND/OR WRAPPING SHALL BE DONE ONLY WHERE SLOPES ARE GREATER THAN 20% OR WHERE OTHER STABILITY PROBLEMS EXIST.
9. ALL SHRUBS AND GROUND COVER PLANTS SHALL BE PLANTED AT THE ON CENTER DISTANCES NOTED ON THE PLANTING SCHEDULE.
10. ALL OPEN LANDSCAPE AREAS SHALL BE SOED OR GROUND COVER.
11. ALL PLANTING BEDS SHALL BE MULCHED WITH MATERIALS AS SPECIFIED ON THE PLANTING PLAN. WITH A SAUCER SURROUNDING EACH PLANT. HARDWOOD MULCH SHALL BE EVENLY SPREAD, 3" DEEP.
12. A PRE-EMERGENT HERBICIDE SHALL BE APPLIED TO ALL PLANTING BEDS. FERTILIZER SHALL BE APPLIED IN ACCORDANCE WITH THE SOIL TEST RECOMMENDATIONS.
13. ALL LANDSCAPING MATERIALS SHALL BE INSTALLED IN A SOUND, WORKMAN-LIKE MANNER, AND ACCORDING TO BEST PRACTICE CONSTRUCTION AND PLANTING PROCEDURES. ANY LANDSCAPE MATERIAL THAT IS DEEMED UNACCEPTABLE, OR INSTALLED IN A MANNER THAT RENDERS THEM UNACCEPTABLE AS DETERMINED BY THE LANDSCAPE ARCHITECT, SHALL BE REMOVED AND REPLACED WITH ACCEPTABLE MATERIALS. ALL CHANGES AND SUBSTITUTIONS OF PLANT AND LANDSCAPE MATERIALS MUST BE APPROVED BY THE LANDSCAPE ARCHITECT, OR EQUAL.

PLANT SCHEDULE

| SYM. | BOTANICAL NAME | COMMON NAME | CAL. | HEIGHT | ROOT | REMARKS |
|------------------------|----------------|----------------------------|------------------------|---------|-------|------------------|
| TREES - DETAIL B/SD1.1 | | | | | | |
| 3 | AR | ACER RUBRUM 'AUTUMN BLAZE' | AUTUMN BLAZE RED MAPLE | 3" CAL. | 8.8.8 | SPECIMEN QUALITY |

NOTE: ALL AREAS DISTURBED BY CONSTRUCTION ARE TO BE HYDROSEEDED UNLESS OTHERWISE SHOWN TO RECEIVE SOD.



GENERAL SITE NOTES

1. THE SITE PLANS WERE PREPARED BASED UPON TOPOGRAPHIC SURVEYS BY S&ME, 2020 LIBERTY DRIVE, SUITE 105, LEXINGTON, KY 40505. REFER TO SITE SURVEY SHEETS.
2. THE CONTRACTOR SHALL FIELD VERIFY ALL EXISTING SITE FEATURES AND CONDITIONS. REPORT ANY DISCREPANCIES TO THE ARCHITECT PRIOR TO THE START OF CONSTRUCTION.
3. THE ARCHITECT AND ARCHITECT'S CONSULTANTS SHALL HAVE NO RESPONSIBILITY FOR THE DISCOVERY, PRESENCE, HANDLING, REMOVAL OR DISPOSAL OF, OR EXPOSURE OF PERSONS TO HAZARDOUS MATERIALS IN ANY FORM AT THE PROJECT SITE, INCLUDING BUT NOT LIMITED TO ASBESTOS, ASBESTOS PRODUCTS, POLYCHLORINATED BIPHENYL (PCB) OR OTHER TOXIC SUBSTANCES.
4. THE CONTRACTOR SHALL USE EXTREME CARE IN WORKING AROUND EXISTING OVERHEAD AND UNDERGROUND UTILITIES. MEASURES SHOULD BE TAKEN TO PROTECT ALL UTILITIES FROM DAMAGE DURING CONSTRUCTION.
5. SEE EROSION POLLUTION AND SEDIMENT CONTROL PLAN FOR RECOMMENDED BEST MANAGEMENT PRACTICES INFORMATION AND SEDIMENT CONTROLS.

SITE DEVELOPMENT TAGS

- EXISTING TO REMAIN - PROTECT THROUGHOUT CONSTRUCTION.
 - BUILDING TO REMAIN UNLESS OTHERWISE NOTED ON ARCHITECTURAL PLANS. NO UTILITIES TO THESE FACILITIES ARE TO BE REMOVED UNLESS NEW PERMANENT UTILITY IS PROVIDED PRIOR TO DEMOLITION.
 - PAVEMENT TO REMAIN - PATCH/REPAIR WHERE DAMAGED BY CONSTRUCTION. SAW-CUT TO PROVIDE CLEAN EDGE. CONCRETE PAVING TO BE SAW-CUT BACK TO NEAREST UNDAUNAGED CONTROL OR ISOLATION JOINT. MATCH NEW ADJACENT PAVEMENT TO EXISTING PAVEMENT ELEVATIONS.
 - TREE/VEGETATION TO REMAIN.
 - UTILITY TO REMAIN.
 - STORM LINE/STRUCTURE TO REMAIN.
 - FENCING TO REMAIN.
 - RETAINING WALL TO REMAIN.
- ASPHALT PAVEMENT (321216) SEE DETAIL E/SD3.1
 - CONCRETE SIDEWALK. SEE DETAIL F/SD3.1
 - CONCRETE CURBS (321413)
 - a) 6" CONCRETE HEADER CURB. SEE DETAIL G/SD3.1
 - b) TYPE A ACCESSIBLE DROPPED CURB. SEE DETAIL I/J/SD3.1
 - c) TYPE B ACCESSIBLE DROPPED CURB. SEE DETAIL I/K/SD3.1
 - CONCRETE WHEEL STOP. SEE DETAIL L/SD3.1
 - PAINTED PAVEMENT MARKINGS. (321723.13)
 - a) 4" PAVING STRIPING, WHITE.
 - b) ACCESSIBLE PARKING STRIPING. SEE DETAIL M/SD3.1
 - c) PAINTED TRAFFIC STOP BAR, 12"x12", WHITE.
 - d) 4" STRIPE PAINTED ISLAND, WHITE.
 - e) STRIPE PAINTED CROSSWALK. SEE DETAIL P/SD3.1
 - f) PAINTED TRAFFIC ARROW. SEE DETAIL Q/SD3.1
 - TRAFFIC SIGNAGE (SINGLE POST). (101453)
 - a) STOP SIGN. SEE DETAIL V/SD3.1
 - b) ACCESSIBLE PARKING SIGN. SEE DETAIL O/SD3.1
 - CONCRETE STAIR. SEE DETAIL R/S/SD3.1
 - VEHICULAR GUARDRAIL.

NOT FOR
CONSTRUCTION

SITE DEVELOPMENT, LAYOUT & PLANTING PLAN
WEST IRVINE INTERMEDIATE SCHOOL PAVEMENT IMPROVEMENTS
FOR:
ESTILL COUNTY BOARD OF EDUCATION
397 ENGINEER DR., IRVINE, KY 40336

LEGEND

- CONCRETE PAVEMENT
- ASPHALT PAVEMENT
- SEDIMENT CONTROL FENCE. ADDITIONAL FENCE MAY BE REQUIRED AT OTHER AREAS DURING CONSTRUCTION. SEE DETAIL B/SD0.1
- TREE PROTECTION FENCE. INSTALLED PER SPECIFICATIONS

PLANTING LEGEND

- SOD. (329223)
- HYDROSEED. ALL AREAS DISTURBED BY CONSTRUCTION ARE TO BE HYDROSEEDED UNLESS SODDED. (329223)
- NEW TREE. SEE DETAIL B/SD1.1 (329300)

BG# 22-178
Project No: 2143
Drawn By:
Rev'd By:

SHEET RELEASE

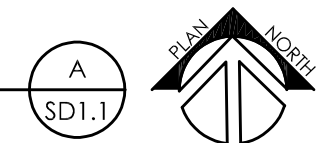
1
2
3
4
5
6
7
8
COPYRIGHT © 2021
CONSTRUCTION DOCUMENTS

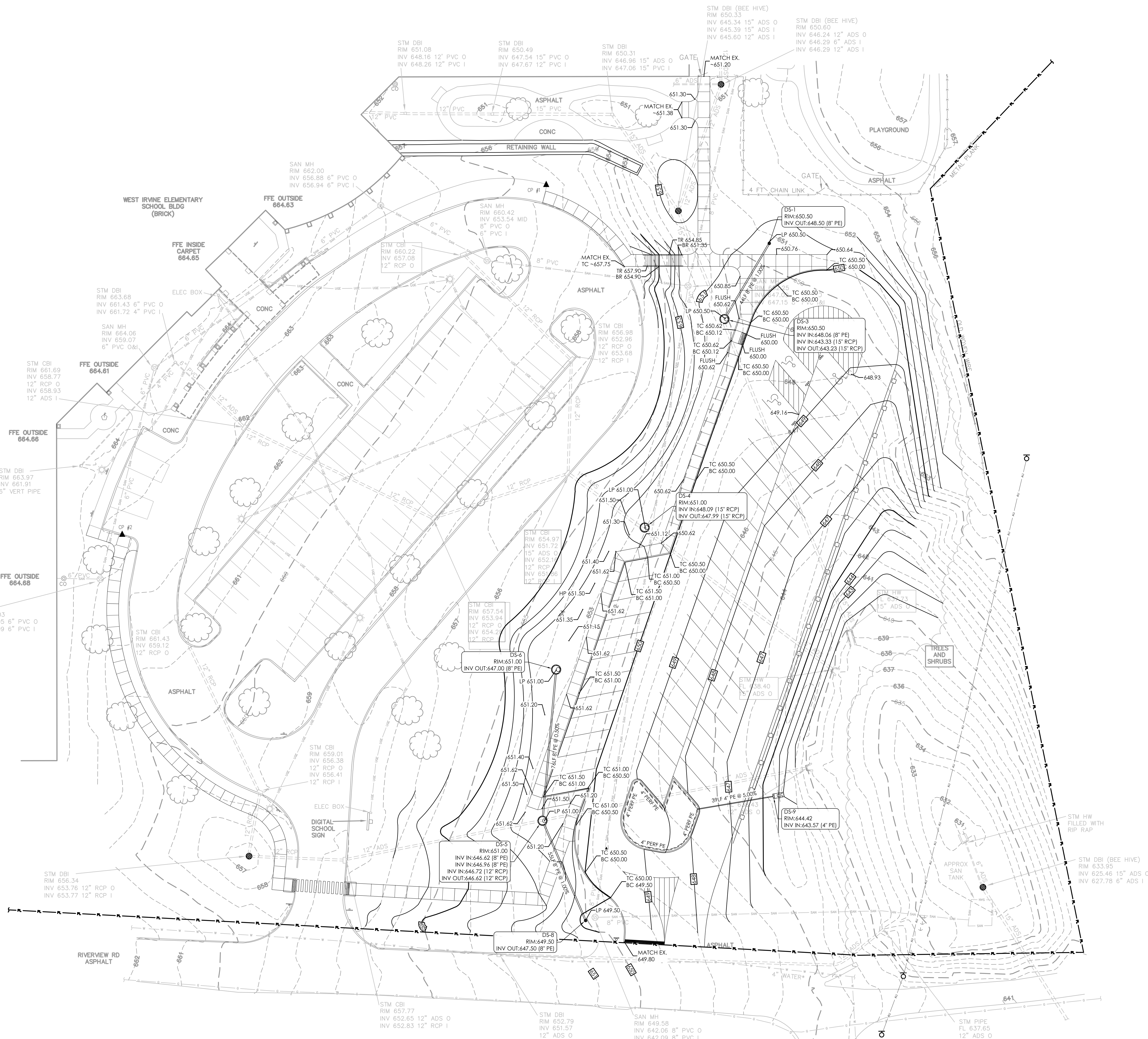
SD1.1

DATE ISSUED:
JANUARY 13, 2022

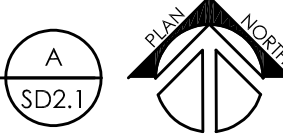
SITE LAYOUT AND DEVELOPMENT PLAN

SCALE: 1"=20'





SITE GRADING AND DRAINAGE PLAN
SCALE: 1"=20'



GENERAL SITE NOTES

1. THE SITE PLANS WERE PREPARED BASED UPON TOPOGRAPHIC SURVEYS BY S&ME, 2020 LIBERTY DRIVE, SUITE 105, LEXINGTON, KY 40505. REFER TO SITE SURVEY SHEETS.
2. THE CONTRACTOR SHALL FIELD VERIFY ALL EXISTING SITE FEATURES AND CONDITIONS. REPORT ANY DISCREPANCIES TO THE ARCHITECT PRIOR TO THE START OF CONSTRUCTION.
3. THE ARCHITECT AND ARCHITECTS CONSULTANTS SHALL HAVE NO RESPONSIBILITY FOR THE DISCOVERY, PRESENCE, HANDLING, REMOVAL OR DISPOSAL OF, OR EXPOSURE OF PERSONS TO HAZARDOUS MATERIALS IN ANY FORM AT THE PROJECT SITE, INCLUDING BUT NOT LIMITED TO ASBESTOS, ASBESTOS PRODUCTS, POLYCHLORINATED BIPHENYL (PCB) OR OTHER TOXIC SUBSTANCES.
4. THE CONTRACTOR SHALL USE EXTREME CARE IN WORKING AROUND EXISTING OVERHEAD AND UNDERGROUND UTILITIES. MEASURES SHOULD BE TAKEN TO PROTECT ALL UTILITIES FROM DAMAGE DURING CONSTRUCTION.
5. SEE EROSION POLLUTION AND SEDIMENT CONTROL PLAN FOR RECOMMENDED BEST MANAGEMENT PRACTICES INFORMATION AND SEDIMENT CONTROLS.

SITE GRADING NOTES

1. THE CONTRACTOR SHALL VERIFY LOCATIONS AND ACTUAL DEPTHS OF ALL EXISTING STORM DRAINS, GAS MAINS, WATER MAINS, AND PIPES TO ALL NEW CONNECTIONS AND CROSSINGS. CONTRACTOR SHALL PAY PARTICULAR ATTENTION TO AREAS WHERE CONSTRUCTION OR GRADING MAY INTERFERE WITH SUCH LINES.
2. ANY DISCREPANCIES BETWEEN THIS GRADING PLAN AND ACTUAL FIELD CONDITIONS SHALL BE BROUGHT TO THE ATTENTION OF THE ARCHITECT IN WRITING PRIOR TO EXCAVATION, GRADING, TRENCHING, OR OTHER CONSTRUCTION OF ANY SORT. FAILURE TO NOTIFY THE ARCHITECT IN WRITING PRIOR TO COMMENCEMENT OF EXCAVATION, GRADING, TRENCHING, OR OTHER CONSTRUCTION SHALL IMPLY THE CONTRACTORS VERIFICATION OF AND ACCEPTANCE OF EXISTING SITE CONDITIONS. SAID FAILURE TO NOTIFY THE ARCHITECT IN WRITING SHALL IDENTIFY AND HOLD HARMLESS THE OWNER FROM ANY ADDITIONAL COSTS INCURRED BY THE CONTRACTOR DUE TO DISCREPANCIES NOT REPORTED WHICH COULD HAVE BEEN DETECTED BY PRUDENT AND REASONABLE OBSERVATION AND VERIFICATION BY THE CONTRACTOR.
3. ALL IMPERVIOUS SURFACES SHALL BE GRADED AND INSTALLED WITH A MINIMUM SLOPE OF ONE PERCENT (1%) AND A MAXIMUM SLOPE OF SEVEN PERCENT (7%).
4. ALL PERVIOUS SURFACES SHALL BE GRADED AND INSTALLED WITH A MINIMUM SLOPE OF TWO PERCENT (2%) AND A MAXIMUM SLOPE OF THIRTY-THREE PERCENT (33%) EXCEPT WHERE SHOWN.
5. SLOPE PERVIOUS SURFACES MIN. 5% AND IMPERVIOUS SURFACES MIN. 1% AWAY FROM BUILDING FOUNDATIONS.
6. MAINTAIN GRADING TO PROMOTE POSITIVE DRAINAGE AT ALL TIMES. DO NOT ALLOW WATER TO POND IN CONSTRUCTION AREAS.
7. RELOCATE ALL BURIED UTILITIES THAT ARE IMPACTED BY ANY EARTHWORK. RELOCATED UTILITY LOCATIONS ARE TO BE APPROVED BY THE ARCHITECT PRIOR TO STARTING WORK.
8. PROTECT AREAS TO BE SEEDDED AS FOLLOWS:
A) DITCHES AND DRAINAGE SWALES ARE TO RECEIVE HIGH-VELOCITY EROSION-CONTROL BLANKETS.
B) SLOPES 4:1 (H:V) OR GREATER ARE TO RECEIVE LONG-TERM EROSION-CONTROL BLANKETS.
C) SLOPES BETWEEN 4:1 AND 6:1 (H:V) ARE TO RECEIVE SHORT-TERM EROSION CONTROL BLANKETS.
D) SLOPES BELOW 6:1 (H:V) ARE TO RECEIVE STRAW MULCH PER THE SPECIFICATIONS. DO NOT USE HAY.
9. ANY AREAS DISTURBED DURING CONSTRUCTION ARE TO BE RECONDITIONED, SEEDED AND MULCHED PER THE SPECIFICATIONS.
10. COMPACT SOIL TO NOT LESS THAN THE FOLLOWING PERCENTAGES OF THEIR STANDARD PROCTOR MAXIMUM DRY DENSITY AT PLUS OR MINUS TWO (2) PERCENT OF OPTIMUM MOISTURE CONTENT:
A) UNDER FLOOR SLABS AND FOUNDATIONS ON FILL - 97%
B) FILLS ON EXISTING SOILS, ROCK CUTS OR SHOT-ROCK FILL - 97%
C) PAVED AREAS AND WALKS - 95%
D) LANDSCAPE AREAS OUTSIDE MASS FILL AREAS - 85%
11. ALL TREES THAT ARE IDENTIFIED BY THE ARCHITECT TO REMAIN, EITHER ON THE DRAWING OR IN THE FIELD, ARE TO BE PROTECTED IN ACCORDANCE WITH THE SPECIFICATIONS. ALL TREES LOCATED OUTSIDE OF AREAS IDENTIFIED TO BE RE-GRADED ARE TO BE PROTECTED IN ACCORDANCE WITH THE SPECIFICATIONS.
12. THE CONTRACTOR SHALL ENSURE THAT CONSTRUCTION DEBRIS AND SEDIMENT ARE REMOVED DAILY FROM SITE DRIVEWAYS, PARKING AREAS, WALKWAYS AND SURROUNDING ROADWAYS AND WALKWAYS.
13. EXCESS SATISFACTORY SOILS ARE TO BE DISPOSED OF ON-SITE IN A LOCATION IDENTIFIED BY THE OWNER. THESE SOILS ARE TO BE SPREAD AND COMPACTED IN ACCORDANCE WITH THE SPECIFICATIONS.
14. THE NEW PARKING, ROADS AND ROAD BASE ARE NOT DESIGNED TO ACCOMMODATE CONSTRUCTION TRAFFIC AND SHOULD NOT BE USED FOR SUCH UNLESS STABILIZED USING #2 CRUSHED STONE AND/OR GEO-GRID IN ADDITION TO THE PAVEMENT DESIGN SECTION SHOWN. IF THE CONTRACTOR WISHES TO USE THE NEW ROAD ALIGNMENTS DURING CONSTRUCTION, IT IS THE CONTRACTORS RESPONSIBILITY TO STABILIZE THE ROAD ALIGNMENT SUBGRADES AND PREVENT THEM FROM BEING DAMAGED DURING CONSTRUCTION.
15. THE CONTRACTOR SHALL INSTALL AND MAINTAIN A CRUSHED STONE ENTRY AND DRIVE TO REDUCE SOIL TRACKING.

SITE DRAINAGE NOTES

1. DRAINAGE PIPE THAT CROSSES UNDER ROADS OR PARKING AREAS SHALL BE REINFORCED CONCRETE. ALL PE PIPE SHALL BE DUAL WALL POLYETHYLENE PIPE WITH SMOOTH INTERIOR WALL, OR EQUIVALENT AS APPROVED IN THE SPECIFICATIONS. ALL STORM PIPING SHALL BE INSTALLED AT A CONSTANT, POSITIVE SLOPE FROM INLET CONNECTION TO DISCHARGED CONNECTION. PIPE SLOPE IS TO BE 0.5% MINIMUM.
2. SEDIMENT PROTECTION DEVICES, SUCH AS SILT FENCING SHALL BE INSTALLED IN AND/OR AROUND ALL STORM STRUCTURES.
3. EROSION CONTROL BLANKETS ARE TO BE INSTALLED AS INDICATED IN THE SPECIFICATIONS.
4. ALL STORM STRUCTURES ARE TO BE DESIGNED FOR H-20 LOADING.
5. ALL GRATES AND MANHOLE COVERS ARE TO BE HEAVY DUTY CAST IRON DESIGNED FOR H-20 LOADING.
6. MAINTAIN GRADING TO PROMOTE POSITIVE DRAINAGE AT ALL TIMES.
7. ALL ROOF DRAINS AND DOWNSPOUTS, INCLUDING CANOPY DOWNSPOUTS, ARE TO BE PIPED UNDERGROUND AND CONNECTED TO STORM WATER STRUCTURES. DOWNSPOUT BOOT AND DOWNSPOUT SIZES ARE TO BE COORDINATED WITH THE MANUFACTURERS AND INSTALLERS OF EACH ITEM. CLEANOUTS ARE TO BE LOCATED AT EACH CHANGE IN DIRECTION OF THE PIPING. ENSURE CLEANOUTS ARE DESIGNED FOR AUTOMOBILE TRAFFIC, AND ARE FLUSH WITH THE SURROUNDING SURFACES.
8. THE LOCATIONS SHOWN FOR THE NEW STORM SEWER PIPING AND STRUCTURES ARE APPROXIMATE. ACTUAL LOCATIONS CAN BE ADJUSTED WITH ARCHITECTS WRITTEN APPROVAL IN ORDER TO AVOID UNFORESEEN CONDITIONS OR OTHER CONSTRUCTION CONFLICTS. CONTRACTOR IS TO COORDINATE STORM SEWER INSTALLATION WITH ALL OTHER TRADES AND WORK.

SPOT ELEVATION LEGEND

TC - TOP OF CURB
BC - BOTTOM OF CURB
FFE - FINISHED FLOOR ELEVATION

DRAINAGE LEGEND

DS-P DRAINAGE STRUCTURE. REFER TO STORM DRAINAGE STRUCTURE SCHEDULE.

NOT FOR
CONSTRUCTION

SITE GRADING AND DRAINAGE PLAN
WEST IRVINE INTERMEDIATE SCHOOL PAVEMENT IMPROVEMENTS
FOR:
ESTILL COUNTY BOARD OF EDUCATION
397 ENGINEER DR., IRVINE, KY 40336

BG# 22-178

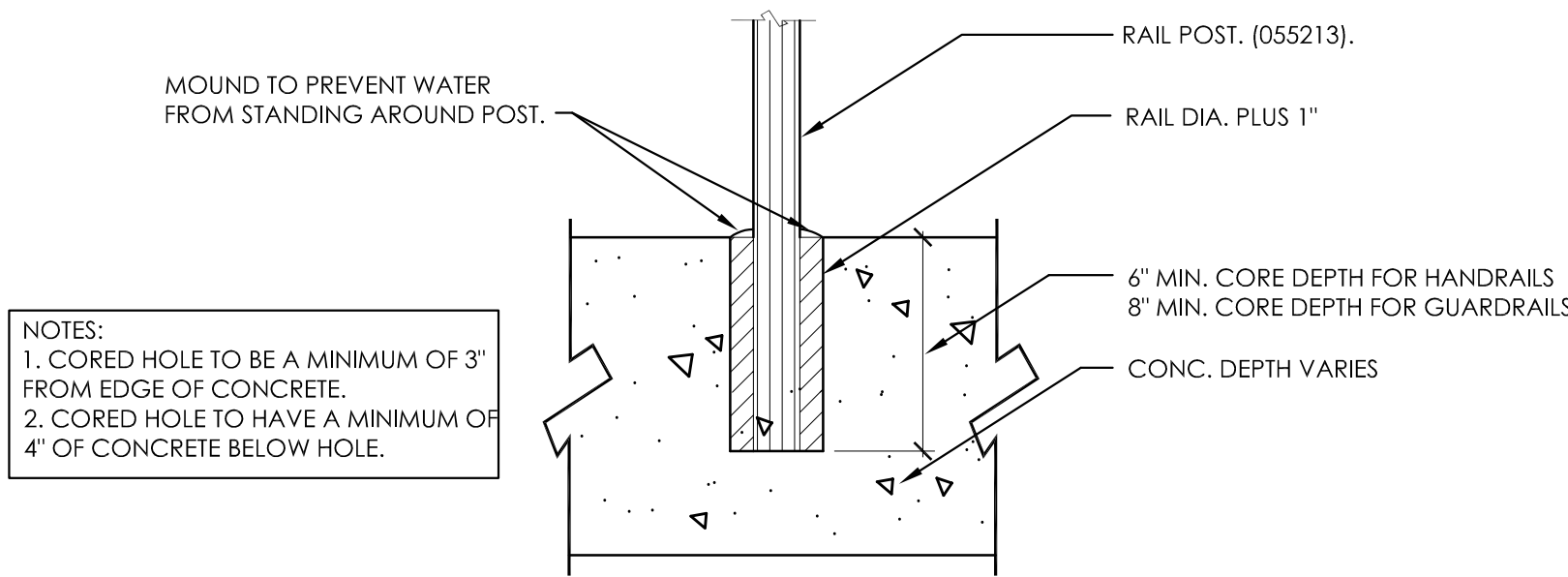
Project No: 2143
Drawn By:
Rev'd By:

| SHEET RELEASE | |
|---------------|--|
| 1 | |
| 2 | |
| 3 | |
| 4 | |
| 5 | |
| 6 | |
| 7 | |
| 8 | |

COPYRIGHT © 2021
CONSTRUCTION DOCUMENTS

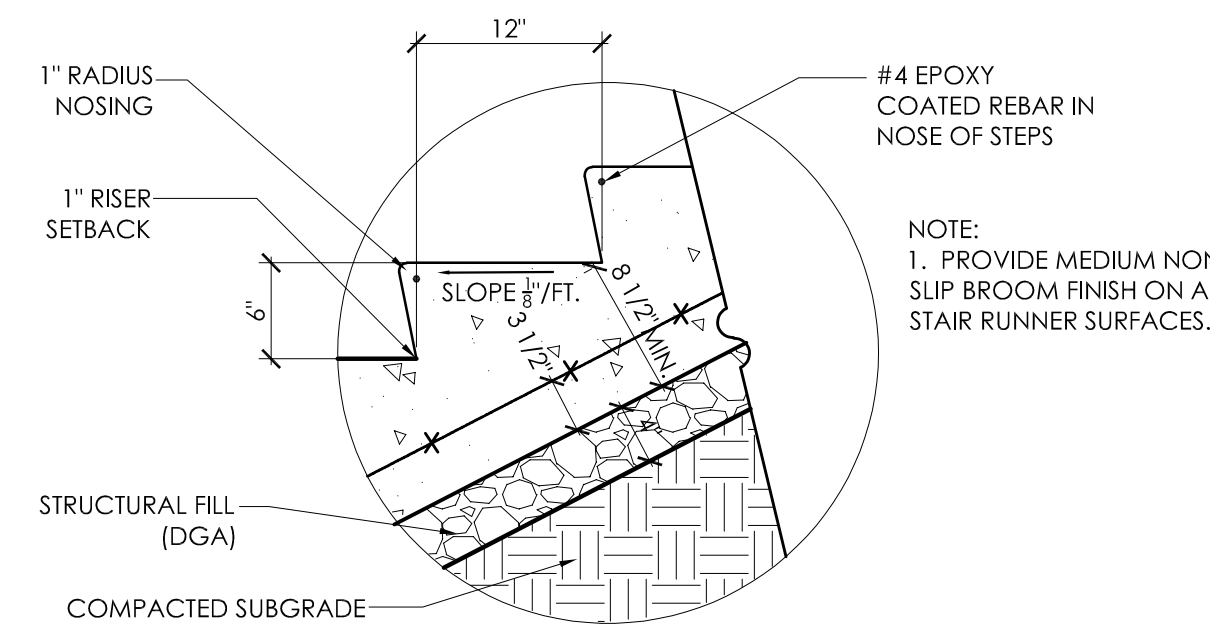
SD2.1

DATE ISSUED:
JANUARY 13, 2022



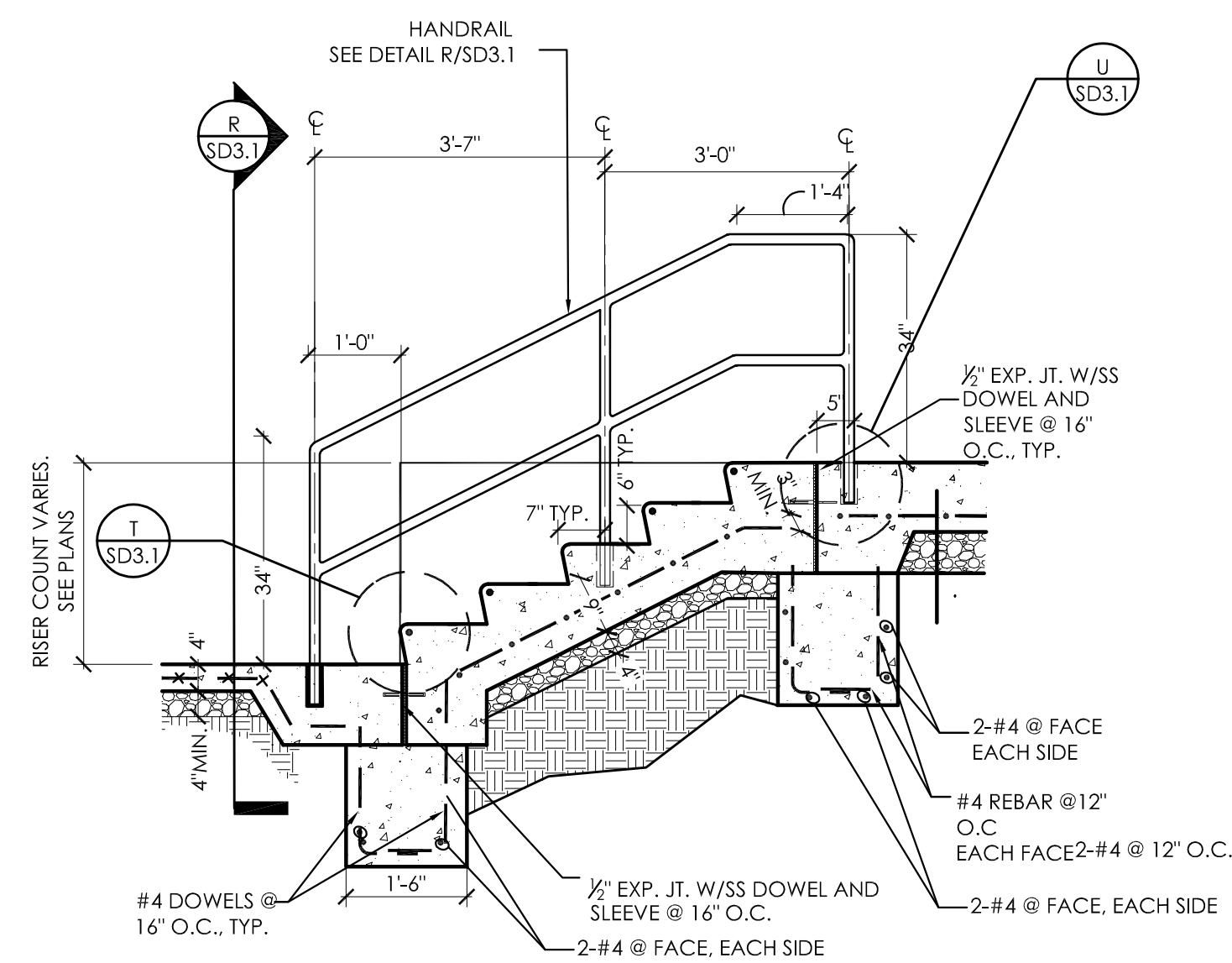
HANDRAIL/GUARDRAIL POST DETAIL
SCALE : N.T.S.

U
SD3.1



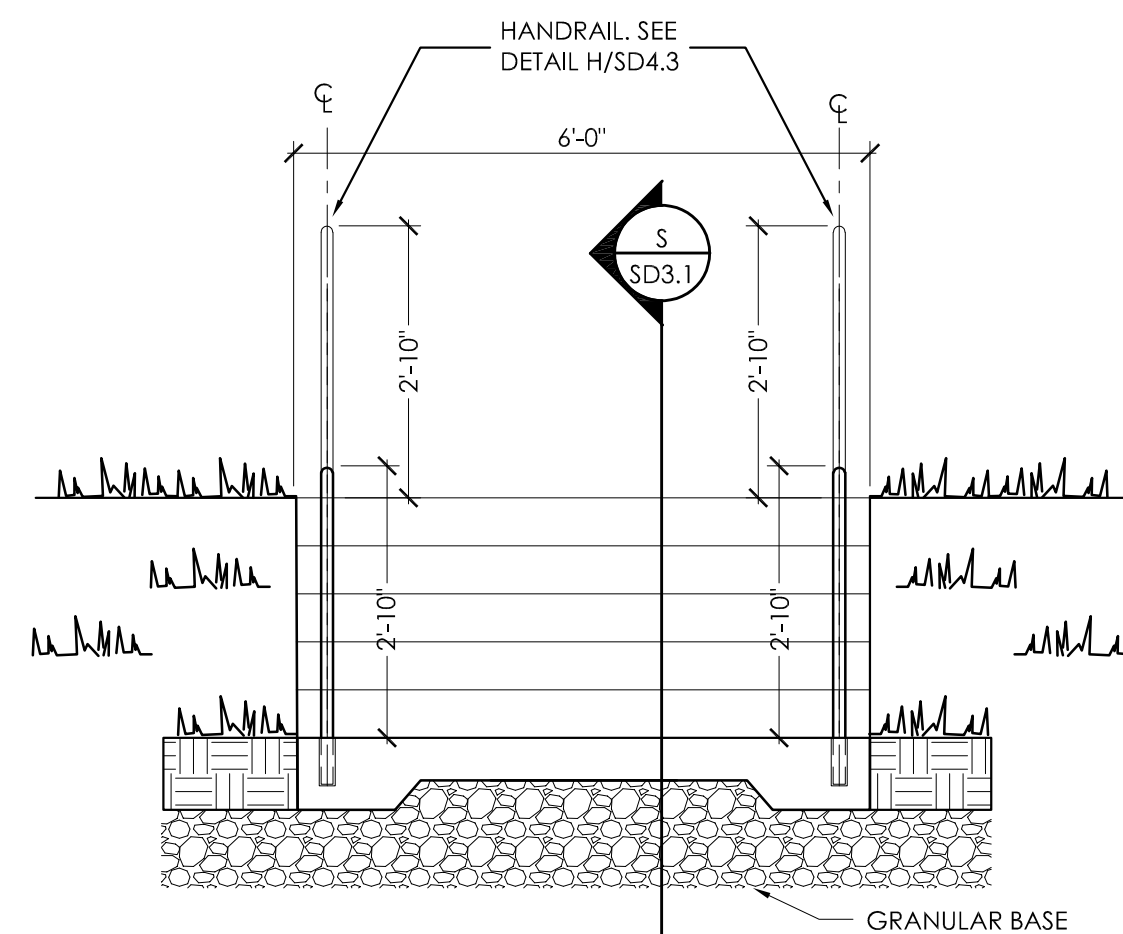
TYPICAL STAIR TREAD AND NOSING DETAIL
SCALE : 1" = 1'-0"

T
SD3.1



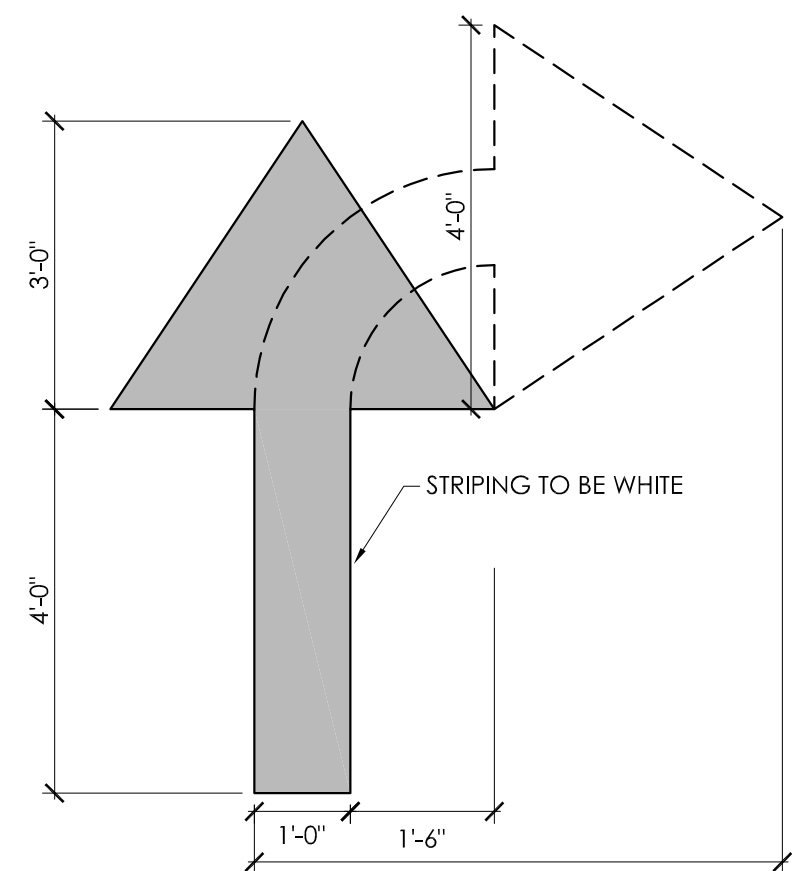
CONCRETE STAIR A - SECTION
SCALE : N.T.S.

S
SD3.1



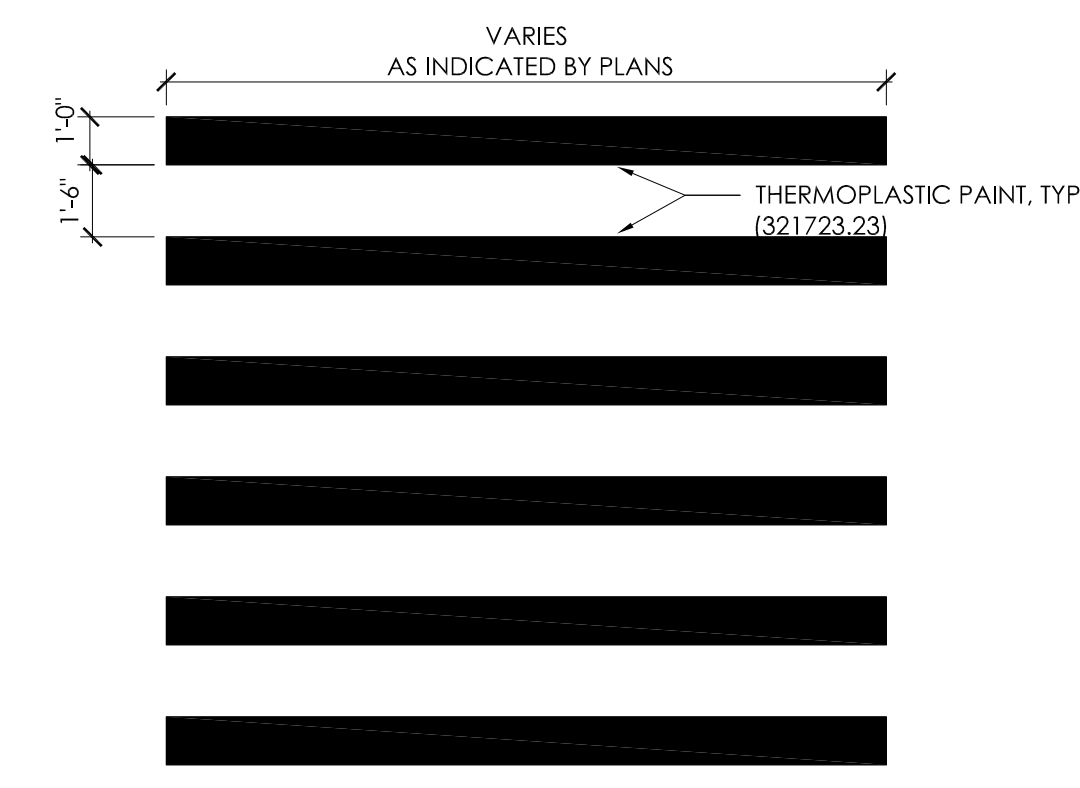
CONCRETE STAIR A - ELEVATION
SCALE : N.T.S.

R
SD3.1



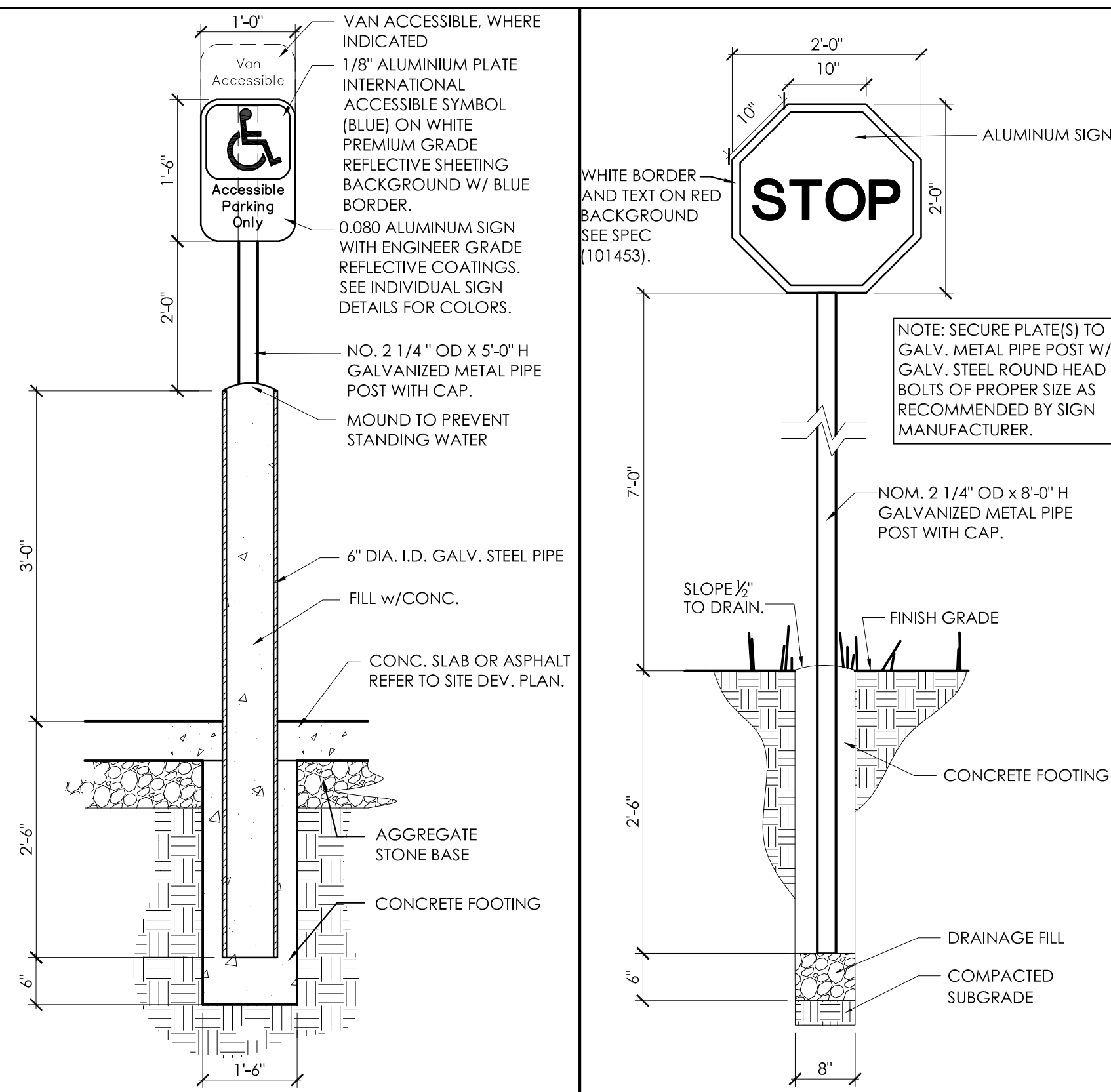
TRAFFIC ARROW
SCALE : 1/2" = 1'-0"

Q
SD3.1



PAINTED CROSS WALK (321723.23)
SCALE : 1/4" = 1'-0"

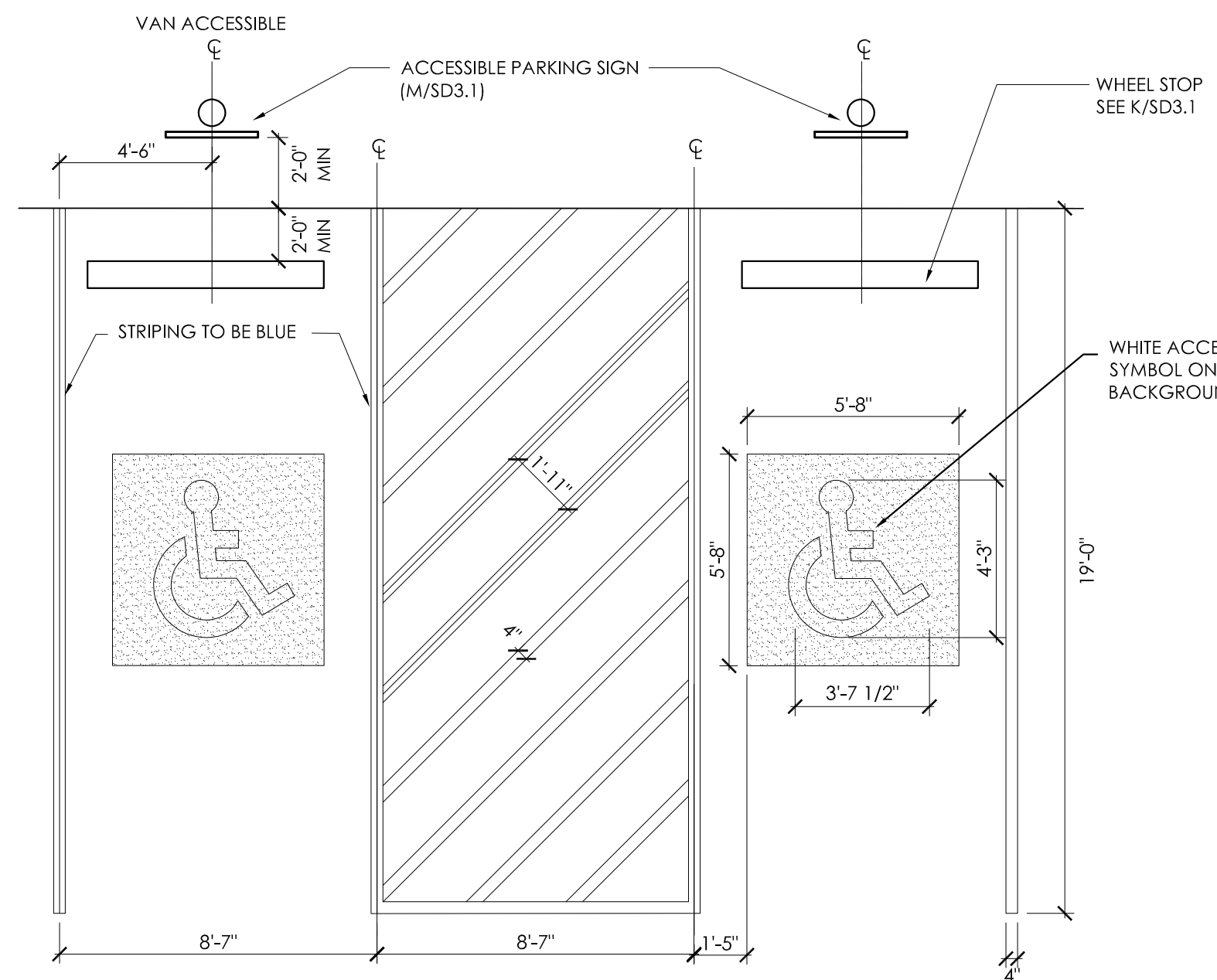
P
SD3.1



ACCESSIBLE PARKING SIGN
SCALE : 3/4" = 1'-0"

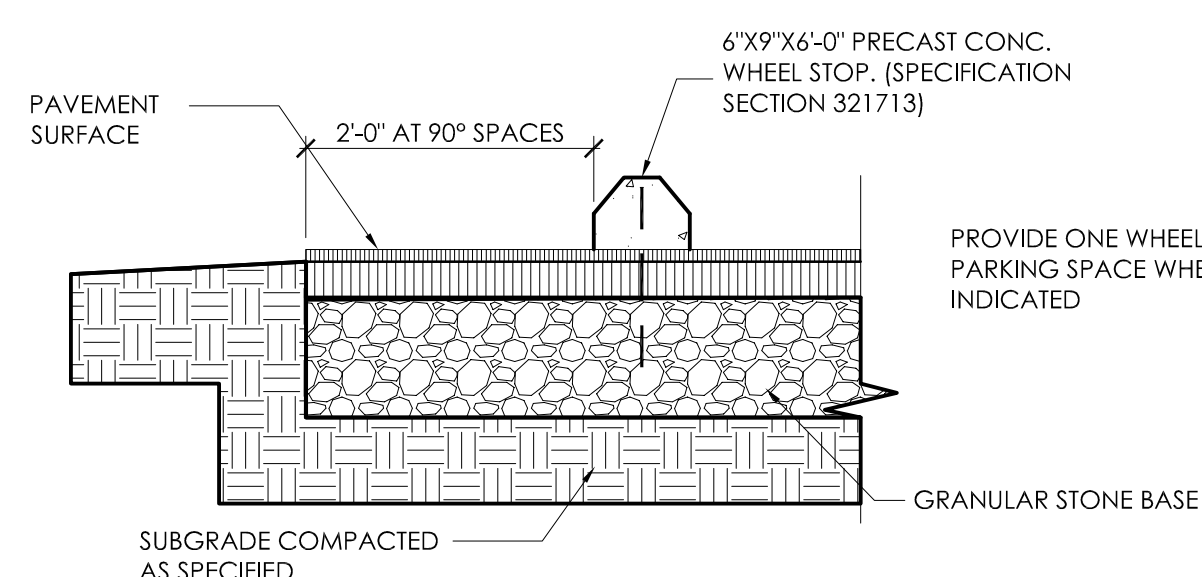
TRAFFIC SIGNAGE (101424)
SCALE : 3/4" = 1'-0"

N
SD3.1



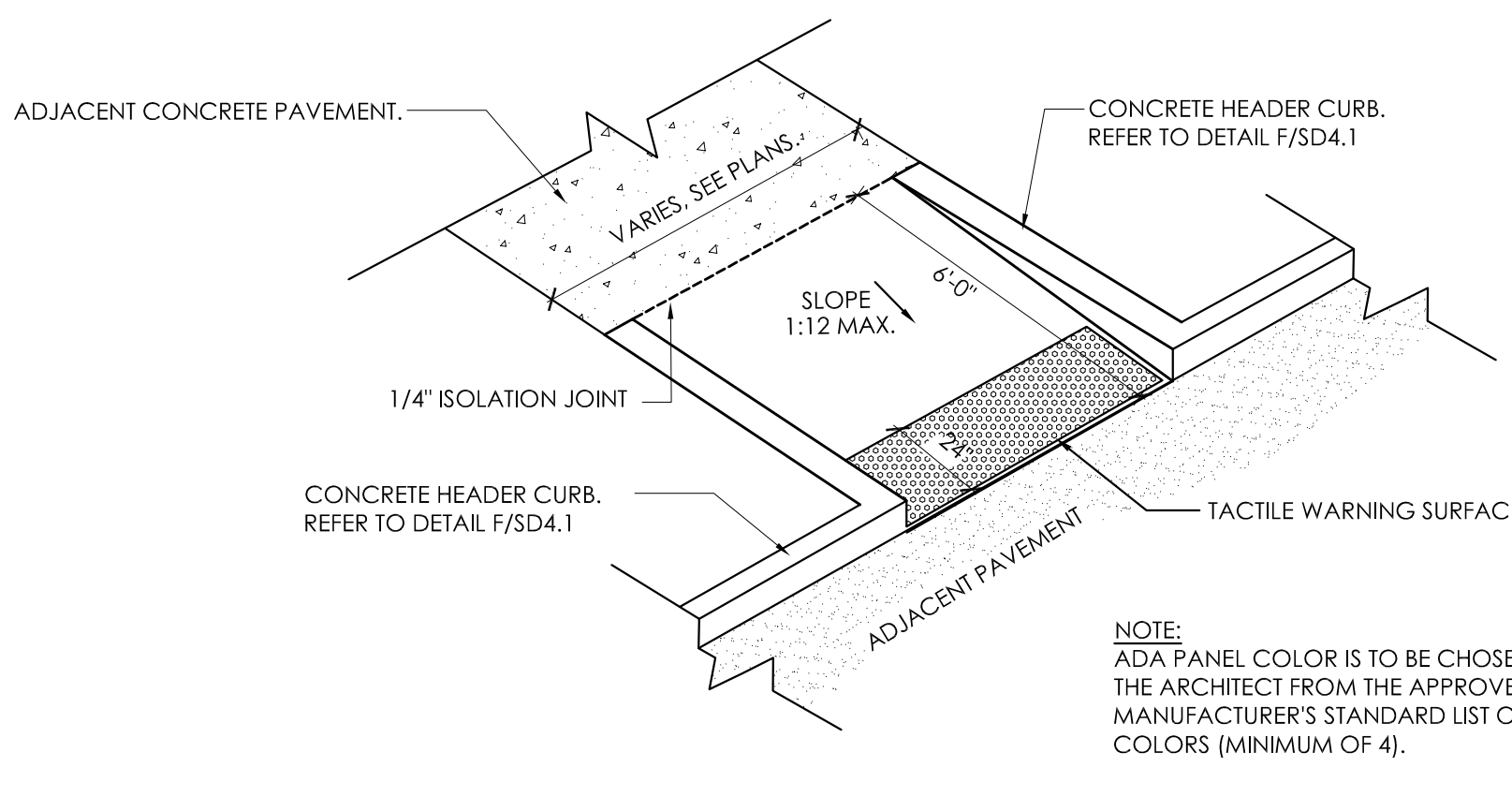
ACCESSIBLE PAVEMENT MARKING
SCALE : 1/4" = 1'-0"

M
SD3.1



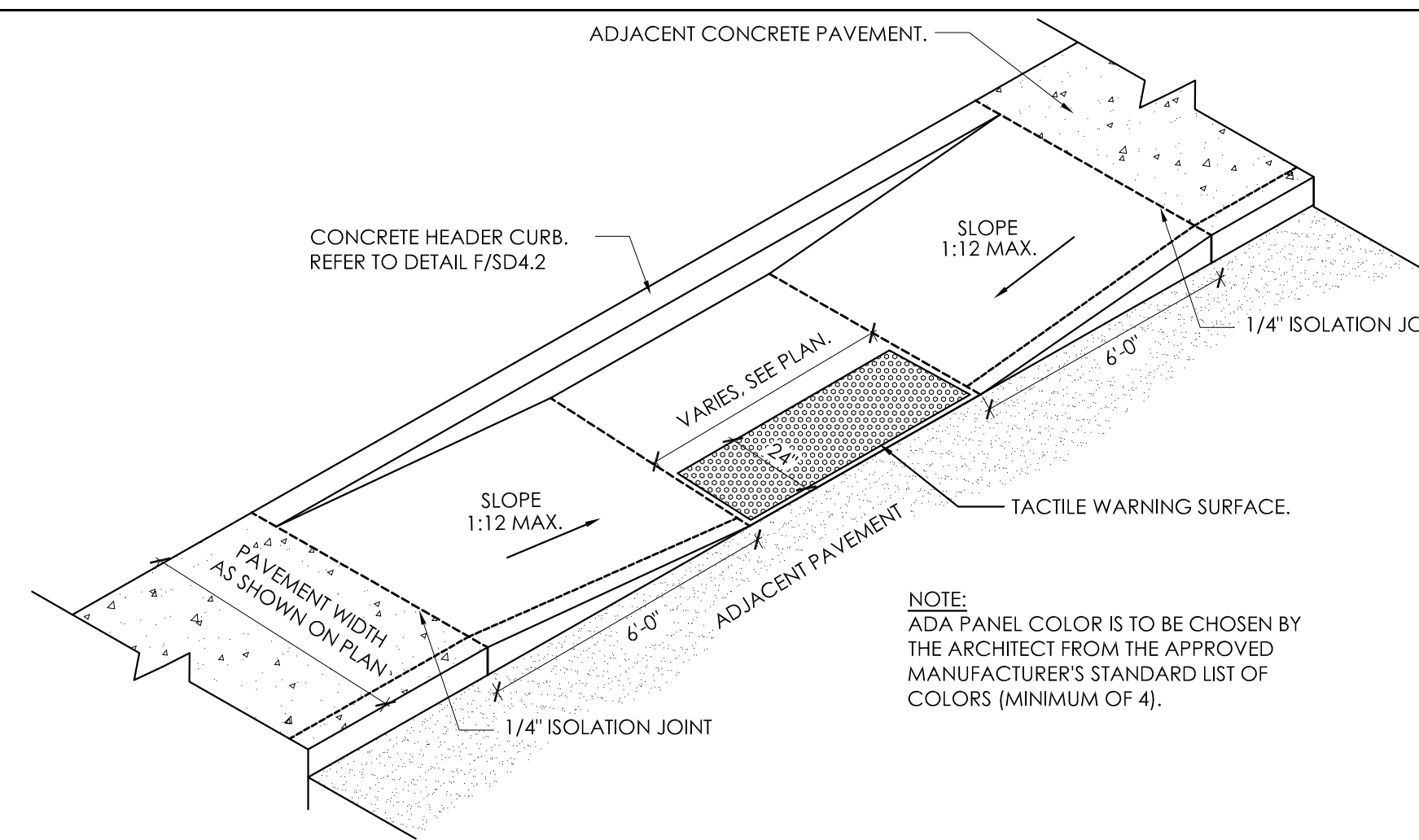
CONCRETE WHEEL STOP (321713)
SCALE : 1-1/2" = 1'-0"

L
SD3.1



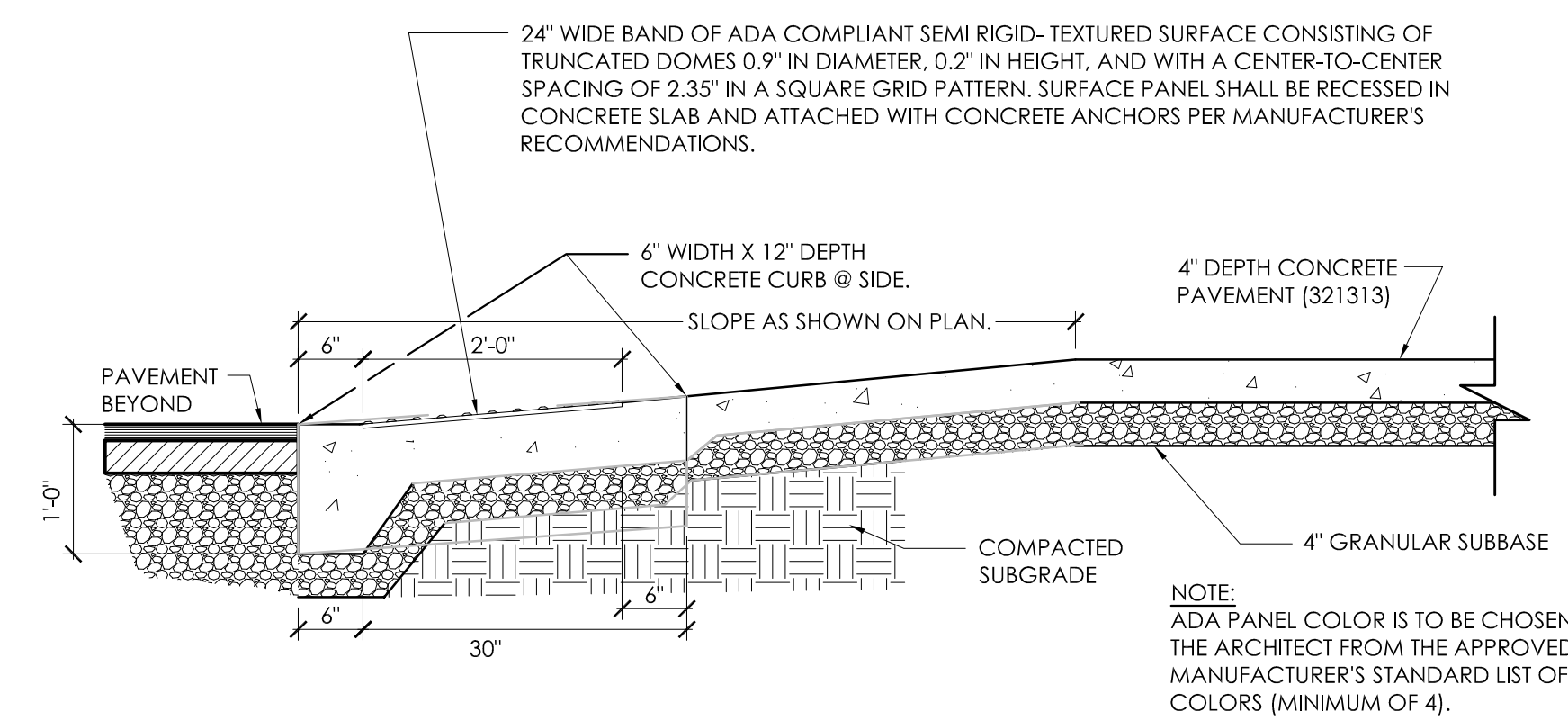
ACCESSIBLE DROPPED CURB - TYPE C
SCALE : N.T.S.

K
SD3.1



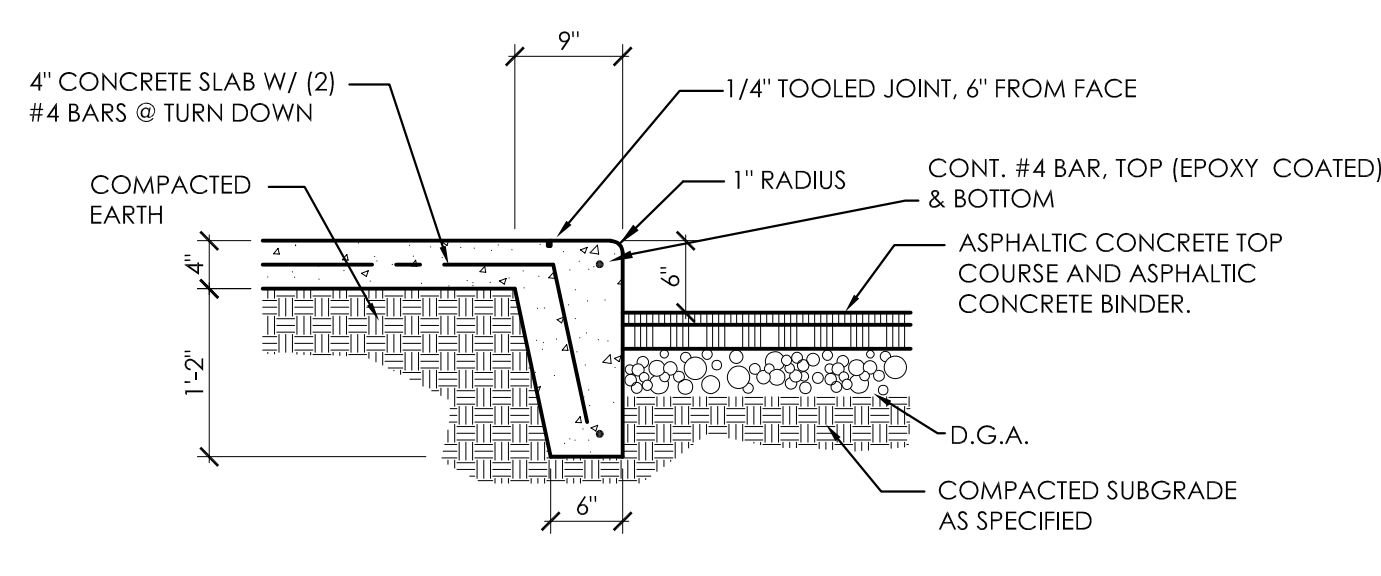
ACCESSIBLE DROPPED CURB - TYPE B
SCALE : N.T.S.

J
SD3.1



CONCRETE RAMP W/ DETECTABLE WARNING PANEL
SCALE : 3/4" = 1'-0"

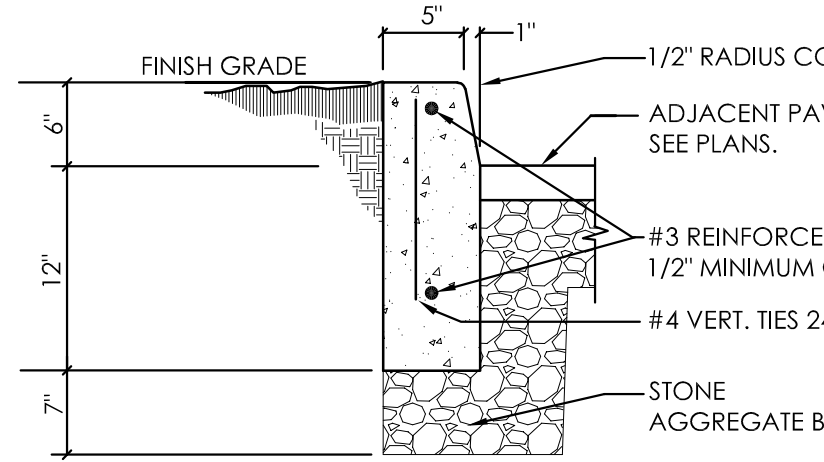
I
SD3.1



4\"/>

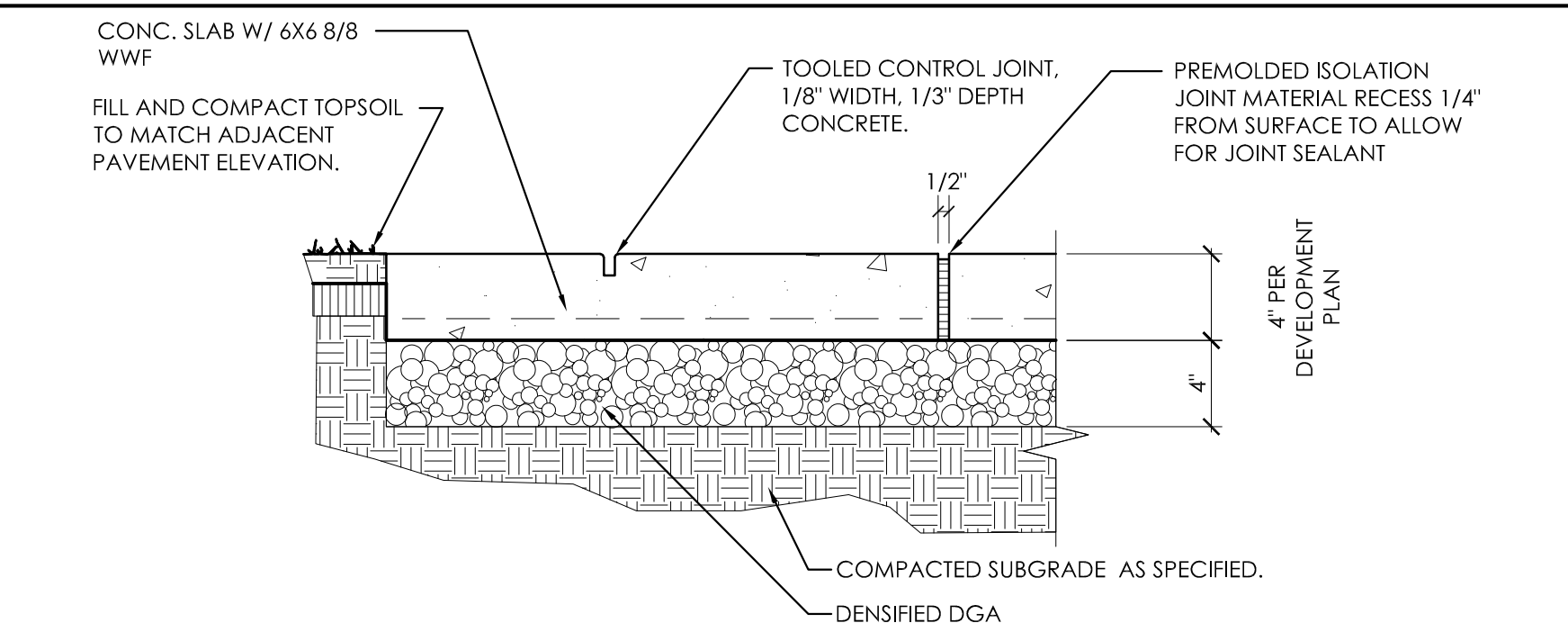
H
SD3.1

- NOTES:
1. PROVIDE EXPANSION JOINTS & CONTRACTION JOINTS AS REQUIRED-SEE DETAIL THIS SHEET. REFER TO SPEC. SECTION FOR ADDITIONAL REQUIREMENTS. (321613)
 2. BACKFILL AT BACK FACE OF CURB TO BE LEVEL WITH THE FINISH ELEVATION OF THE CURB. COMPACT PER THE SPECS.



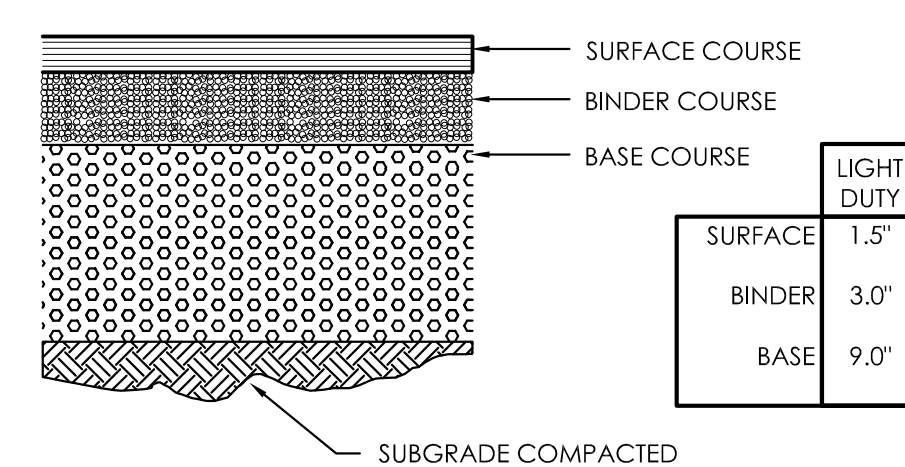
CONCRETE HEADER CURB (321613)
SCALE : 1" = 1'-0"

G
SD3.1



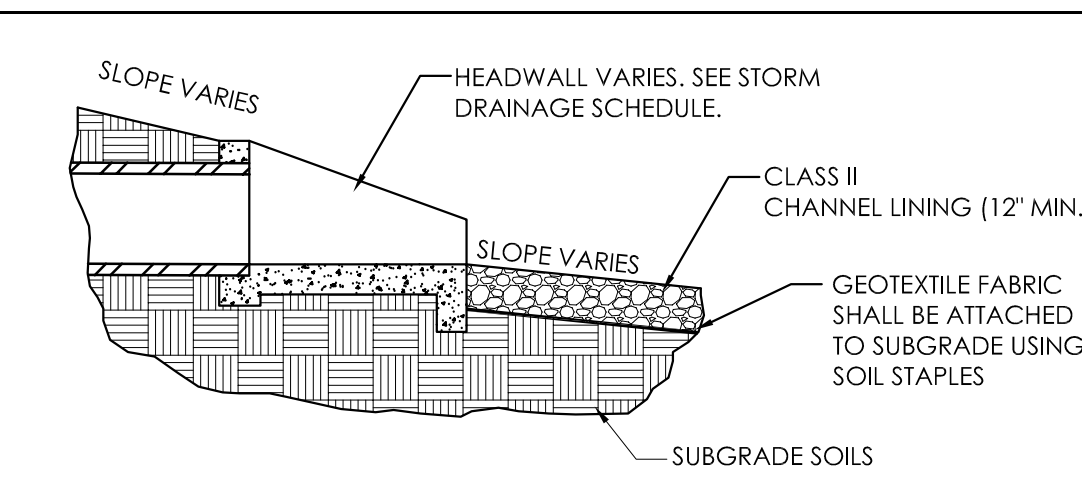
CONCRETE PAVEMENT 4\"/>

F
SD3.1



ASPHALT PAVEMENT (321216)
SCALE : 1-1/2" = 1'-0"

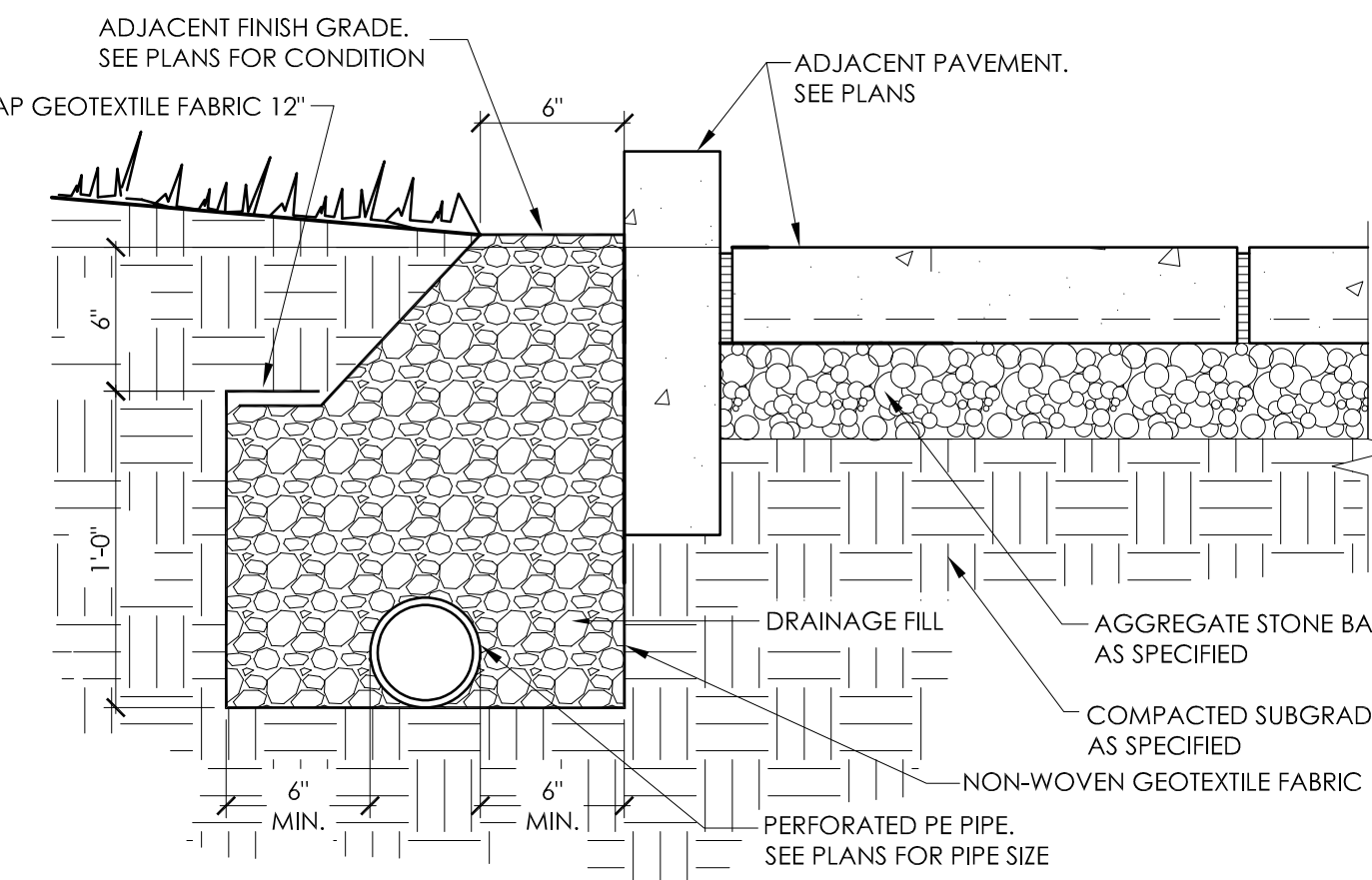
E
SD3.1



- NOTES:
- 1.) CHANNEL LINING SHALL BE PLACED IN A MANNER THAT WILL NOT TEAR OR DAMAGE THE FILTER FABRIC.
 - 2.) GEOTEXTILE FABRIC SHALL BE NON-WOVEN DRAINAGE FABRIC SUCH AS AMOCO 4545.
 - 3.) GRADING AROUND THE HEADWALL SHOULD BE SUFFICIENT TO PREVENT THE HEADWALL FROM MOVING AND TO PREVENT EROSION AROUND THE HEADWALL. SLOPED HEADWALLS ARE TO BE GRADED FLUSH SO THAT THEY CAN BE MOWED OVER.
 - 4.) RIP-RAP EROSION PROTECTION IS TO EXTEND A MINIMUM OF 25-FEET DOWNSTREAM OF THE HEADWALL AND IS TO EXTEND TO THE TOP OF THE DITCH OR A MINIMUM OF 15-FEET WIDE.

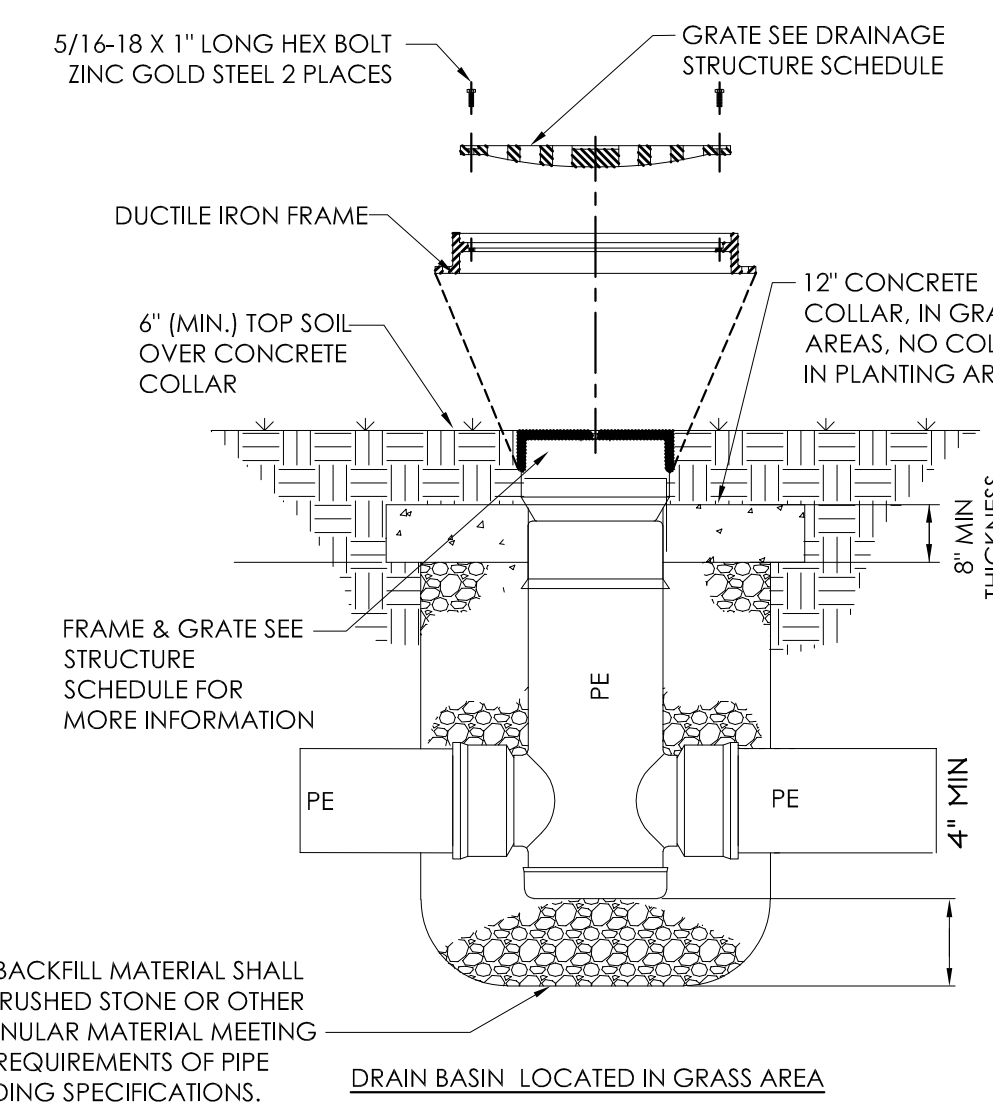
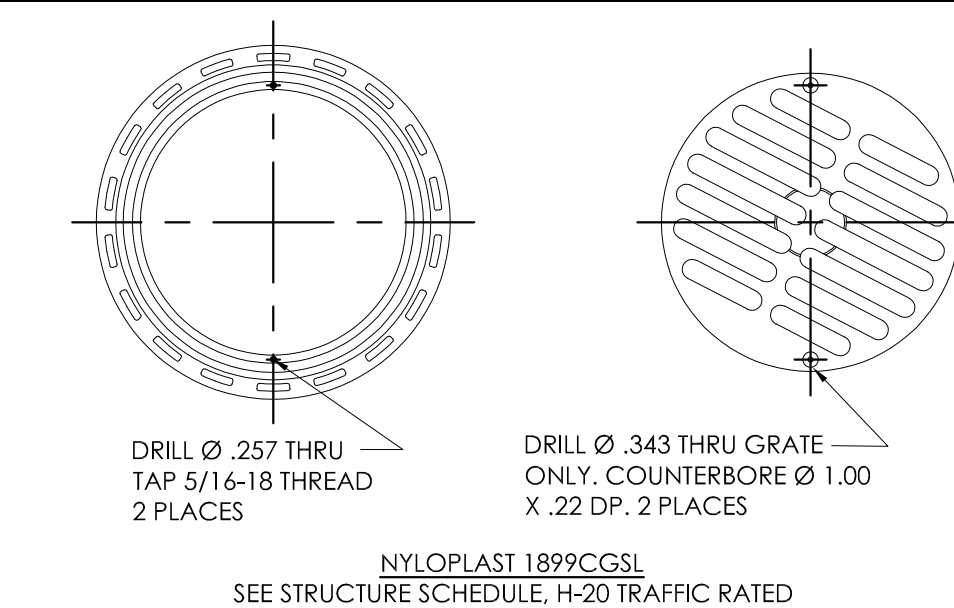
HEADWALL DETAIL
SCALE : N.T.S.

D
SD3.1



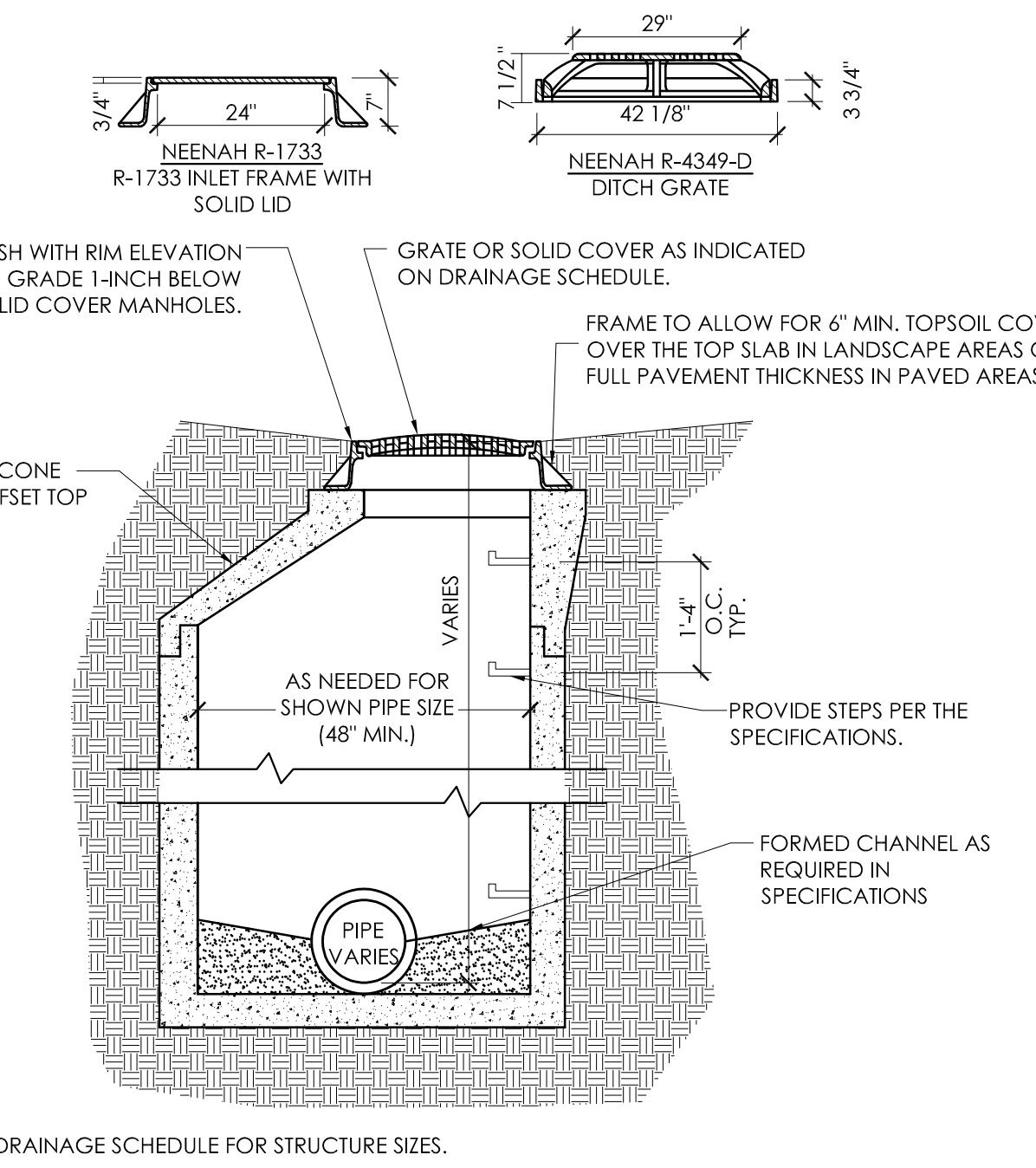
FRENCH DRAIN
SCALE : 1-1/2" = 1'-0"

C
SD3.1



DRAIN BASIN DETAIL
SCALE : N.T.S.

B
SD3.1



- NOTE:
1. REFER TO DRAINAGE SCHEDULE FOR STRUCTURE SIZES.
 2. PIPE ORIENTATION SHOWN IS FOR TYPICAL CONSTRUCTION ONLY. ACTUAL PIPE LOCATIONS, SIZES AND ORIENTATIONS MAY DIFFER. REFER TO PROJECT DRAWINGS FOR PIPE INFORMATION.

MANHOLE/SURFACE INLET (TYP)
SCALE : 1/2" = 1'-0"

A
SD3.1