

**WOODFORD COUNTY BOARD OF EDUCATION  
AGENDA ITEM**

**ITEM #: VIII C DATE:** November 2, 2021

**TOPIC/TITLE:** Travel Requests

**PRESENTER:** Danny Adkins

**ORIGIN:**

- ☐ TOPIC PRESENTED FOR INFORMATION ONLY (No board action required.)
- ☐ ACTION REQUESTED AT THIS MEETING
- ☒ ITEM IS ON THE CONSENT AGENDA FOR APPROVAL
- ☐ ACTION REQUESTED AT FUTURE MEETING: (DATE)
- ☐ BOARD REVIEW REQUIRED BY

- ☐ STATE OR FEDERAL LAW OR REGULATION
- ☒ BOARD OF EDUCATION POLICY
- ☐ OTHER:

**PREVIOUS REVIEW, DISCUSSION OR ACTION:**

- ☐ NO PREVIOUS BOARD REVIEW, DISCUSSION OR ACTION
- ☐ PREVIOUS REVIEW OR ACTION

- ☐ DATE:
- ☐ ACTION:

**BACKGROUND INFORMATION:**

As per Board policy the attached travel requests must be approved by the Board.


**SUMMARY OF MAJOR ELEMENTS:**

Attached: WCHS Agriculture/FFA (Ireland, July 2023 (exact dates to be determined)).

**IMPACT ON RESOURCES:** Please see attached documentation.

**TIMETABLE FOR FURTHER REVIEW OR ACTION:**

**SUPERINTENDENT'S RECOMMENDATION:** ☒ Recommended ☐ Not Recommended

  
\_\_\_\_\_

**WOODFORD COUNTY SCHOOLS  
OUT OF STATE OR OVERNIGHT  
TRAVEL REQUEST**

|  |   |
|--|---|
| <b>INDIVIDUAL/STAFF REQUESTING TRIP:</b>   | WC Agriculture/FFA  |
| <b>DATES OF TRIP:</b>  | July 2023   |
| <b>TRIP TO:</b>  | Ireland   |
| <b>METHOD OF TRANSPORTATION:</b>   | Plane/bus   |
| <b>ACCOMMODATIONS:</b>   | See attached list   |
| <b>EDUCATIONAL OBJECTIVE/<br/>CURRICULUM CONNECTIONS:</b>  | Students will be able to travel internationally to see the global impact of agriculture. The tour has been planned by EF tours for several years and will allow students opportunities to be more culturally diverse. |
| <b>CONFERENCE AGENDA:<br/>SEE ATTACHMENT</b>   | See attached  |
| <b>NUMBER OF PARTICIPANTS/SCHOOLS:<br/>(If more than one school, attach list of participants and their schools.)</b> | There are currently 23 spots available.   |
| <b>TOTAL ESTIMATED COST:</b>   | \$4165 for students under 20 years of age, \$4665 for anyone over 20 or any parents/community members that wish to attend.  |
| <b>COST INCLUDES:</b>  | Transportation, lodging, tours and some food.   |
| <b>FUNDING SOURCE:</b>   | Students will make payments through EF  |
| <b>FUND MANAGER RECOMMENDATION:</b>  | <input checked="" type="checkbox"/> Recommended <i>Sharon</i><br><input type="checkbox"/> Not Recommended   |
| <b>PRINCIPAL/SUPERVISOR RECOMMENDATION:</b>  | <input checked="" type="checkbox"/> Recommended <i>Sharon</i><br><input type="checkbox"/> Not Recommended   |
| <b>SUPERINTENDENT RECOMMENDATION:</b>  | <input checked="" type="checkbox"/> Recommended <i>Day Day</i><br><input type="checkbox"/> Not Recommended  |





EDUCATIONAL  
TOURS

# International Travel Program Proposal

Woodford Co High School / Tracy Probst



Agriculture in Ireland - Summer 2023

[eftours.com/AGI](http://eftours.com/AGI)



# Your partner in travel-based learning

EF Education First is the world leader in international education. For over 55 years, we've partnered with educators around the world to help more than 15 million students gain new perspectives and build skills for the future through experiential learning.

Our mission is to empower educators to do their best work. At EF Educational Tours, we're working to define the modern educational tour experience. Our itineraries are more than places to go and things to see. We build programs that challenge assumptions, spark connections, and inspire curiosity in young students. Students will expand their knowledge of the world around them, discover more about themselves, grow more confident and independent, and understand new people, places, and cultures.

We take care of every last detail of the tour experience—transportation and lodging, meal reservations and menus, museum tickets and local tour guides, and much more. That also includes behind-the-scenes elements, like safety checks at hotels and background checks on adult travelers. With all that taken care of, educators and students can focus on the bigger picture.

You'll find all the details and more on the next few pages.

## What's contained in this document

|       |                                 |
|-------|---------------------------------|
| Pg. 2 | <b>Safety</b>                   |
| Pg. 4 | <b>Liability protection</b>     |
| Pg. 6 | <b>Affordability</b>            |
| Pg. 7 | <b>Educational value</b>        |
| Pg. 8 | <b>Itinerary specifics</b>      |
| Pg. 8 | <b>Cost and payment options</b> |
| Pg. 9 | <b>Sample hotels</b>            |

This proposal is property of EF Education First and the educator/school for which it was intended. Distributing, copying, and/or sharing it are prohibited. The proposal, including pricing, is valid for the educator, tour, and date(s) specifically mentioned herein. For additions, subtractions, or modifications, please contact your EF Tour Consultant.

© 2021 EF Education First. For full terms and Booking Conditions visit [eftours.com/bc](https://www.ef-tours.com/bc)



# Safety

**Your students' safety is our number one priority. We would never send a traveler to a location we believe to be unsafe—and with our extensive global presence, our best-in-the-industry experience, and our close working relationships with U.S. and international authorities, that's a statement we can back up with real insight. Whether it's a worldwide pandemic or a sprained ankle, a missed flight or confusing medical paperwork, we make sure every situation is taken care of.**

**\*For specific information on EF's response to COVID-19, visit [eftours.com/covid](https://www.efcours.com/covid)**

## Worldwide presence

EF's global presence is truly unmatched. We have staff on the ground 365 days a year in over 50 countries. And we don't just work in those countries—we call them home. EF team members live in nearly every one of our tour destinations, meaning we have the local knowledge to help keep our groups safe. That presence allows us to be there to support you on the ground wherever and whenever you need us.

## 24/7 emergency support

In the event that anything on tour goes wrong, EF staff is always available to help. Your Tour Director is your group's constant companion and first point of contact in an emergency. Additionally, our fully trained support teams are on hand 24/7 to walk teachers through any issues and provide the resources necessary to get things back on track. Our Safety and Incident Response Team—comprised of industry experts, healthcare experts, and even former FBI personnel—is ready to spring into action 24 hours a day, 365 days a year. And when they aren't directly helping EF travelers, they're actively innovating on and shaping the new worldwide standards for cleanliness and safety.



## Your team

This group is fully committed to your school's trip and the safety of every traveler.

### *Operations Safety & Incident Response*

**Team** – This team is strategically based in our Boston, Panama, Tokyo, and Zurich offices to accommodate for all time zones. Available 24 hours a day, every day of the year, they are trained to react quickly if travelers need help. The team uses a combination of extensive training, simulations, incident response planning, and previous experience to manage emergencies. As needed, they can facilitate additional support for groups on tour, solve operational issues, arrange assistance from outside specialists, and liaise with local and international authorities.

### *Emergency Services & Support Team*

Our support team is available 24/7 to help resolve any issue, from a missed flight to a lost passport to more serious on-tour incidents. They also facilitate communication between travelers and families in the event of an emergency at home. The team is made up of highly trained and dedicated EF staff in our Boston and Denver offices who are equipped to solve problems and answer questions that may come up, even outside of regular business hours.

**Tour Director** – Assigned exclusively to your tour for the length of the stay at your destination, your Tour Director meets your group at the airport and travels with you until your departure. All Tour Directors undergo a background check as permissible by local law every two years and are required to participate in ongoing EF safety trainings. They're the first point of contact in an emergency and also communicate information to help travelers stay safe in a foreign destination. Tour Directors assist Group Leaders with hotel check-ins, coordinate meals, facilitate excursions with local guides, and much more. They're also culturally connected and expertly trained to support impactful learning experiences.

**Tour Consultant** – This itinerary expert is devoted to the growth of your students. They are your school's partner, working with you on everything from finding the perfect tour and enrolling students to offering fundraising advice and creating long-term travel programs for your school community. They work directly alongside the Group Leader (a.k.a. local teacher), right up until the moment of departure to make sure everything goes smoothly.

**Traveler Support** – Our team of support specialists are readily available to walk families through insurance inquiries, payment plans, food allergy issues, and any other topics that arise.

**Chaperones** – For every six travelers who enroll on your school's tour, your group is eligible to bring along a chaperone for free (the first spot goes to the Group Leader). This allows for a 6:1 ratio of students to chaperones, who assist Group Leaders with supervision of students to help keep them safe.



# Protection for travelers, schools, and districts

We understand that unpredictable things can happen, either on tour or before departure. We offer a variety of protections, programs, and policies to make sure that, no matter what happens, travelers, schools, and districts are covered. We're doing everything we can to make planning for the future as flexible as possible.

## General liability insurance

All Group Leaders, schools, and districts who travel with EF are automatically added as additional insureds under our **\$50 million General Liability Policy**, regardless of whether or not the tour is affiliated with the school. EF's liability coverage is primary and non-contributory for covered third-party claims. The policy helps safeguard Group Leaders and their schools for covered third-party claims related to bodily injury or property damage, which includes providing a legal defense and covering legal costs for such claims. In addition, all travelers are required to sign EF's Release and Agreement, which includes a release of liability of their Group Leader, school, and school board.

## Flexibility to change tours

The world is always changing. And while our belief in the positive impact of travel is unwavering, it can feel hard to predict what life, here in the U.S. and abroad, will look like several months, a year, or even two years from now. When you decide to travel with EF, we want you to feel secure in that decision. That's why these benefits are built into every EF program.

### *Peace of Mind*

#### *Provided to all groups*

We understand that plans can change due to unforeseen circumstances. EF provides this exclusive program to account for such situations. It provides groups with flexibility to change the dates and destination of their tours in uncertain times. This program accounts for such circumstances and can be enacted up to 45 days prior to departure at the group level for any reason, including terrorism or other world events.

### *COVID Peace of Mind*

#### *Provided to all groups*

In addition to our standard Peace of Mind Program, EF provides an exclusive COVID-19 Peace of Mind Program to account for situations related to the COVID-19 pandemic. This program is automatically included for all travelers and can be enacted up to 45 days prior to departure at the group level, while specific options can be implemented at the individual level.



### ***COVID Care Promise***

#### ***Provided to all groups***

If your child is diagnosed with COVID-19 while on tour, we will coordinate and facilitate support services and logistics including translation services, connections with local health care providers, communication with family, and flights home at no additional cost.

### **Protection for individual travelers**

Travelers can help protect their investment and themselves from certain unexpected events and expenses while on tour with the Global Travel Protection Plan and Global Travel Protection Plan Plus.

#### ***Global Travel Protection Plan***

##### ***Available to all travelers***

Designed specifically with EF travelers in mind, this plan provides both pre-departure and post-departure benefits, including medical expense coverage that may apply on tour and tour cancellation for specified reasons.

#### ***Global Travel Protection Plan Plus***

##### ***Available to all travelers***

To further protect your investment from the unexpected, this plan provides all of the benefits included in the Global Travel Protection Plan as well as expanded cancellation protection.

### **Background checks for adult travelers**

EF requires all adults (18 years and older) to pass a criminal background check before traveling on our student tours. This provides a safer tour experience for all travelers and aligns with the process and expectations of many school districts for adults who volunteer in schools or chaperone school activities. The secure process, provided by a leading professional provider, only identifies those individuals who could present a risk to student travelers while on tour.



# Affordability

**We believe every student should have the opportunity to travel. That's why we're dedicated to providing the lowest prices possible and giving travelers multiple resources for managing payments.**

**Tour Consultants work closely with teachers to build a tour that's exactly right for your students. Through discussions with your teacher, they take into account learning objectives, cost, timing considerations, and any other factors to craft a tour that's accessible to as many students as possible.**

## Resources for managing cost and payments

***Automatic Payment Plan*** – Our recommended payment plan offers the ability to break the tour fee into smaller installments. With most tours planned well in advance, travelers can enroll for only \$95, then pay over a long period of time—often up to 18 months or two years—with final payment due 30 days before departure. Families make payments directly to EF, with no payments going through the school.

***Donation pages*** – Each student has access to their own unique and customizable donation page. The easy-to-share page makes it simple for friends and family to contribute a little something that is automatically applied to the balance of the tour, with no fees whatsoever.

***Global Citizen Scholarship Fund*** – EF Educational Tours provides \$100,000 worth of scholarships to students across the country every year. Any student is able to apply for the Global Citizen Scholarship, which is awarded on both a merit and need basis.



# Educational value

**Our tours help prepare students for the future by teaching them more about the world, themselves, and the impact they can have on the world. Combining the power of experiential learning with the thrill of global travel, our tours help students:**

- **Expand their knowledge of the world around them**
- **Grow more confident and independent**
- **Understand new people, places, and cultures**
- **Discover more about themselves**

## EF is an accredited institution

We echo your commitment to education. Our travel-based learning approach is designed to blend classroom and experiential learning. This allows us to meet the same rigorous standards as schools like yours, ensuring students gain valuable experiences that transform the way they look at the world.



## Earning credit for new experiences

EF makes it easy for students to turn their tour experience into college credit, or to get a head start on their college essays—all while making their travel experience even more engaging.

- Students in grades 9—12 can earn 3.0 undergraduate credits, along with the confidence that comes with taking a college course, by completing a series of assignments and a final research project with our partner, Southern New Hampshire University—all for just \$215.
- Educators traveling on student tours may earn up to 45 free hours toward relicensure OR 3 or 6 graduate level credits (\$285/\$450) through Southern New Hampshire University.



# Itinerary specifics

For more robust details, the complete itinerary is attached to this document. It includes specific locations, each day's activities, travel plans, and more.

## Price of the proposed tour

The tour program price covers a wide range of services that ensure students have an incredible experience. It includes all the planning and preparation that leads up to departure, travel and accommodations, plus logistical support and details once the group reaches their destination.

## Price details

### *Agriculture in Ireland*

|                             |         |
|-----------------------------|---------|
| Program Price* <sup>1</sup> | \$4,000 |
|-----------------------------|---------|

Includes:

- Round-trip airfare and on tour transportation
- Hotels with private bathrooms
- Breakfast and dinner (see your itinerary for meal details)
- Full-time Tour Director
- Daily activities, tours and entrances to attractions

|                          |       |
|--------------------------|-------|
| Global Travel Protection | \$165 |
|--------------------------|-------|

|                              |      |
|------------------------------|------|
| EF's Peace of Mind Program * | Free |
|------------------------------|------|

|                                      |                |
|--------------------------------------|----------------|
| <b>Total for Students (under 20)</b> | <b>\$4,165</b> |
|--------------------------------------|----------------|

|                     |          |
|---------------------|----------|
| 20 monthly payments | \$204/mo |
|---------------------|----------|

|                               |       |
|-------------------------------|-------|
| Adult Supplement <sup>2</sup> | \$500 |
|-------------------------------|-------|

|                         |                |
|-------------------------|----------------|
| <b>Total for Adults</b> | <b>\$4,665</b> |
|-------------------------|----------------|

|                     |          |
|---------------------|----------|
| 20 monthly payments | \$229/mo |
|---------------------|----------|



# Sample hotels

**Every hotel we work with must meet our high standards for safety, quality, and cleanliness. Hotels are vetted by our team to make sure they meet our requirements and are subsequently inspected regularly to ensure they continue to satisfy those parameters. Please note that hotels abroad may have different amenities than travelers are accustomed to in the United States.**

Here are some examples of hotels students might stay in on tour:

## **Aspect Hotel Park West | Dublin**

[www.aspecthotelparkwest.com](http://www.aspecthotelparkwest.com)

Aspect Hotel Dublin Park West is located within the award-winning Park West Business Campus, close to the city and all the major road networks. Access to and from the hotel is easy and convenient; it is situated just four miles West of Dublin City Centre. Guests can visit the many popular attractions including Dublin Castle and The Guinness Brewery.



**"I am now more confident than ever in the safety and experiences of my students after working with EF on this trip. As a leader, I am committed to ensuring a global mindset throughout my district and student/teacher travel."**

**Angela M., Administrator, Brunswick, ME**

**"I advocate for travel because the world is vast and diverse. If we want to truly understand our neighbors in other states or countries, we must reach out and meet them where they live. Travel provides a glimpse into another world that our students may have Googled or watched on a device, but living it with the smells, food, smiles, and various challenges teaches flexibility, tolerance, understanding, and empathy."**

**- Chuck C., Group Leader, Central, SC**

#### **From a single tour to a whole program**

A single tour can open up endless possibilities for a small group of students. Our goal at EF is to bring that experience to as many students as possible, including the broadest collection of students at your school. By progressing from a single tour to a consistent travel program, you'll not only build a culture of exploration, but you'll provide the opportunity of travel to even more students. We can work directly with you and your staff to establish a framework for your travel program that's tailored specifically to your school's needs and goals.





/ EDUCATIONAL  
TOURS



EF STEM

## Agriculture in Ireland

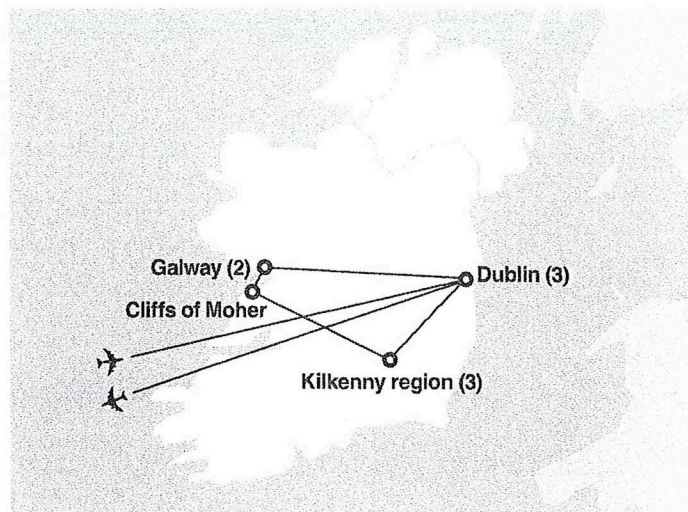
10 days | Dublin, Kilkenny region, Galway

Get your hands dirty (literally) as you experience the farm-to-table journey—an important part of life in Ireland—by visiting a variety of local farms around the country. Learn about organic and sustainable farming practices, the impact of climate change on traditional food production, and how each agricultural product requires specialized care. Get to know Irish farmers and fishermen, learn about the business of farming, and engage in hands-on projects at dairy, potato, shellfish, or sheep farms. Balance your time on the Emerald Isle by exploring the vibrant, culture-packed, and welcoming streets of Dublin, Kilkenny, and Galway, and admire the Atlantic Ocean from atop the Cliffs of Moher.



# Explore a world built on STEM

Science, Technology, Engineering, and Math shape communities across the globe. Our STEM-focused tours showcase the value of diverse ways of thinking and building, while also highlighting the powerful universality of STEM subjects. At EF, we've spent over 55 years witnessing the power of educational travel, and we know how it can transform STEM learners. Each STEM tour challenges travelers to think critically, and helps students develop innovative solutions to global problems.



## What to expect on a STEM tour

### EXPERIENTIAL LEARNING

Apply STEM principles by participating in project-based learning that goes well beyond theory.

### INNOVATIVE LOCATIONS

Tour exciting international destinations that host some of the world's most advanced laboratories, universities, and companies, or are simply perfect global "classrooms" to study analytical issues of the day in real life.

### INDUSTRY EXPERTS

Collaborate and learn with scientists, engineers, researchers, and other STEM practitioners in the field.

### YOUR EXPERIENCE INCLUDES

Full-time Tour Director; sightseeing tours; walking tours; farmer's market or urban farm visit; EPIC museum; potato farm tour; cattle or dairy farm visit and activities; Cliffs of Moher Interpretive Center; shellfish farm visit and activity; sheep farm visit and demonstration (*seasonal*); round-trip flights; 8 overnight stays in hotels; European breakfast and dinner included daily



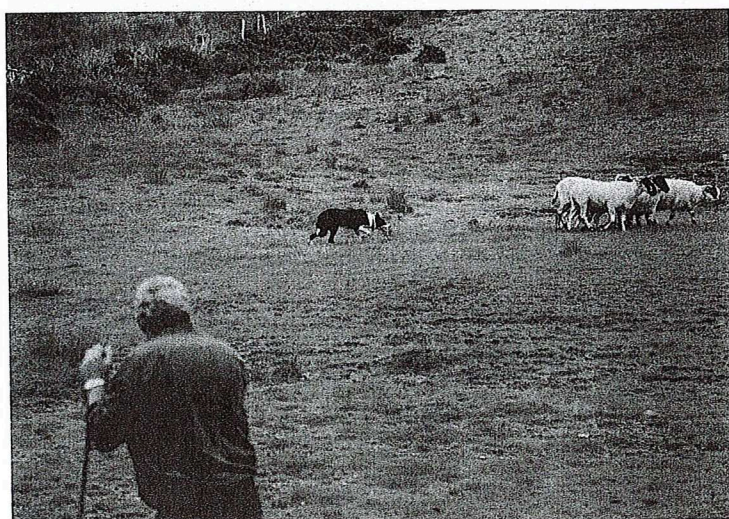
< Learn about the importance of potatoes in Irish history and culture.





“This was an awesome tour for our group. They got to experience a different part of the world while learning about culture, science, and the real business of agriculture all around them.”

Johana T., Agriscience Teacher and FFA Advisor



Learn about organic and sustainable farming while helping care for livestock.



#### Day 1: Fly overnight to Ireland

#### Day 2: Dublin

Meet your Tour Director at the airport in Dublin, your starting point to exploring Ireland's colorful cities, rolling hills, and rich agricultural industry. Take a walking tour of Dublin's winding streets and see iconic areas like Grafton Street and Temple Bar district. Then get your first look at what Irish farms produce at a local farmer's market or an urban farm.

#### Day 3: Dublin

Take a guided tour of Dublin with your expert local guide, where you will see Georgian squares, O'Connell Street, St. Stephen's Green, and Phoenix Park. Visit St. Patrick's Cathedral and EPIC, the interactive museum of Irish emigration, before partaking in an Irish folklore evening.

#### Day 4: Dublin | Kilkenny region

Tour a potato farm and learn about the importance of this crop in Irish history and culture before traveling southwest to Kilkenny. Known as the "Marble City," wander its medieval streets on your walking tour and visit places like Kilkenny Castle and St. Mary's Cathedral.

#### Days 5–6: Kilkenny region

Spend these days engaging in hands-on learning activities on several local cattle, produce, and dairy farms. While projects will vary by season and type of farm, you'll interact with local farmers and could assist them in harvesting, planting, or maintaining crops, processing milk, or feeding livestock. Then, explore a local farm or livestock market to learn about sustainable farming and modern challenges facing the traditional business of agriculture. Top off your visit to Kilkenny with a locally sourced dinner.

#### Day 7: Kilkenny region | Galway

On your way to Galway, the cultural and artistic capital of Ireland's west coast, visit the Cliffs of Moher to walk the cliffside paths and learn about its history at the Cliffs of Moher Interpretive Center. When you arrive in Galway, take a walking tour with your Tour Director, where you might see Eyre Square, famous for its merchant town houses, or Lynch's Castle, built in the 15th century.

#### Day 8: Galway

Spend the morning learning about the sustainability of oyster, mussel, or seaweed farming in the region and their environmentally restorative practices. Partake in a hands-on activity, which includes a meet-and-greet with local fishermen and a walk-through of the shellfish farm's production and processing facilities. Weather and tide permitting, you might have an opportunity to collect shellfish along the shore or in the harbor. Then visit a sheep farm to see a sheepdog demonstration (*seasonal*).

#### Day 9: Galway | Dublin

Spend your last day venturing back to Dublin, passing through the lush, rolling hills of the Irish countryside. Take time to explore more of this lively city, and end your trip with a delicious farewell dinner.

#### Day 10: Depart for home



# The world leader in international education

For over 55 years, EF has been working toward one global mission: *Opening the World Through Education*. Your teacher has partnered with EF because of our unmatched worldwide presence, our focus on affordability, and our commitment to providing experiences that teach critical thinking, problem solving, collaboration, and global competence.

## **AFFORDABILITY**

Every student should have the opportunity to travel, which is why we're dedicated to providing the lowest prices.

## **INSIGHT**

We believe in experiential learning at the most important sites. Your Tour Director is with you at every step, providing their own perspective and local tips.

## **SAFETY**

We're committed to your safety. With 600+ schools and offices in over 50 countries, EF staff can react quickly and in person wherever you travel.

## **THE EASIEST WAYS TO ENROLL TODAY**

**Enroll online**  
[eftours.com/enroll](https://eftours.com/enroll)

**Enroll by phone**  
800-665-5364

**Mail your enrollment form**  
EF Educational Tours  
Two Education Circle  
Cambridge, MA 02141





## Who we are

For over 50 years, Education First has proudly partnered with schools and educators to transform the way students look at the world—and themselves. That passion has grown our family-owned company into the world leader in international education with more than 1 million students experiencing our programs every year.

## Why schools partner with EF

**Safety and experience** - Our rigorous safety and risk management policies, plus our 54 years of experience, means you're in good hands.

**Liability and travel coverage** - Teachers and districts are covered by our \$50 million liability policy, and students are covered by our custom-designed Global Travel Protection.

**Global presence** - Having 600+ schools and offices in more than 50 countries around the world means we're accessible wherever and whenever you need us.

**Accreditation** - Students can earn both high school and college credit on our tours, ensuring an educational focus on all itineraries.

**Dedicated support team** - Support at all levels of planning (pre, during and post-tour) helps teachers seamlessly fit this into their busy schedules.

**Training and mentorship** - Experienced teacher mentors and on-tour training helps to ensure teachers feel prepared and confident to travel with their students.

**Best value** - Our unmatched global presence and longstanding relationships with airlines and hotels ensure that you will always give your students the best experience at the lowest price, guaranteed.

## What we offer

As an education company, we provide a wide range of immersive, experiential educational opportunities under the same umbrella. We help schools build diverse travel programs that appeal to a wide variety of needs and interests, to ensure as many students as possible can experience the world.

Specifically, we offer educational tours, STEM tours, service learning tours, language and culture tours, global leadership summits, and even tours for middle school students.

## What we offer

We help teachers and schools provide international experiences that complement school curricula with experiential learning, helping students to gain new perspectives and build skills for the future. We partner with educators to create global education programs that blend classroom, digital, and experiential learning for students, in order to:

- Broaden their students' horizons and bring their classrooms to life
- Push students out of their comfort zones and have them think critically
- Develop social-emotional learning skills like problem solving, empathy, and global awareness
- Provide fun and unique Professional Development opportunities to educators

