

**FLOYD COUNTY BOARD OF EDUCATION**  
**Anna Whitaker Shepherd, Superintendent**

**442 KY RT 550**  
**Eastern, KY 41622**

**Telephone (606) 886-2354 Fax (606) 886-4550**  
**www.floyd.kyschools.us**

**Linda C. Gearheart, Board Chair - District 1**  
**William Newsome, Jr., Vice-Chair - District 3**  
**Dr. Chandra Varia, Member- District 2**  
**Keith Smallwood, Member - District 4**  
**Steve Slone, Member - District 5**

**Date:** 11/9/2021

**Consent Agenda Item (Action Item):** Consider the purchase of OTUS single teaching and learning platform for use by all K-12 stakeholders to teach, test, analyze, and plan.

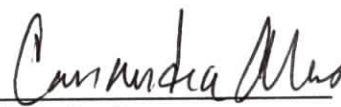
**Applicable State or Regulations:** Board Policy 01.11 General Powers and Duties of the Board.

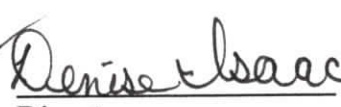
**Fiscal/Budgetary Impact:** OTUS pricing proposal is 67 month subscription for Staff and Students and Navigate Item test bank beginning December 1, 2021 at a cost of \$186, 328  
\*Proposal and Quote Attached and will be paid from ESSER 2 funding.

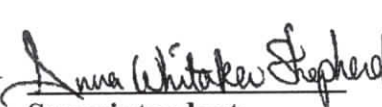
**History/Background:** Traditionally in Floyd County, teachers, administrators and central office personnel spend a lot of time reviewing, compiling and analyzing data. OTUS will allow all data to be represented in one place (i.e.: KPREP data, MAP data, CERT data, Behavior data, Attendance data) Teachers and Administrators will be able to utilize the OTUS platform to quickly see reports of their choosing, whether it is District wide reports, School level reports, Teacher level reports, Classroom level reports, or individual student reports. The ability to see all data we have on one student in one place will free up the teachers and administrators to better plan support and instruction for their students. OTUS will also provide the Navigate Item Test Bank that houses KY State test-like questions based on all standards at all levels in all subjects. This will allow the district to build their own assessments and push them out to all students as needed to support instruction. Parents also will have access to see all data on their individual student as we reach out to partner with parents to provide the best education we can to students. OTUS is a solution built, single-source product that supports districts in creating integrated classroom tools for students and teachers. These tools create powerful transparency for families and school leaders and most often support the following: personalized learning, common assessments, benchmark and formative assessments, differentiation, data-informed instruction, leveraging Google in 1:1 classrooms, blended learning, communication and collaboration and culture, support for at-risk learners and addressing learning loss. Our goal is daily, data driven instruction resulting in effective teaching and learning, without going through stacks and stacks of data.

**Recommended Action:** Approve the purchase of the an OTUS 67 month subscription for Staff and Students and Navigate Item test bank beginning December 1, 2021 at a cost of \$186, 328

**Contact Person(s):** Cassandra Akers, Data/Assessment Consultant & Denise Isaac Chief Informational Technology Coordinator

  
**Principal**

  
**Director**

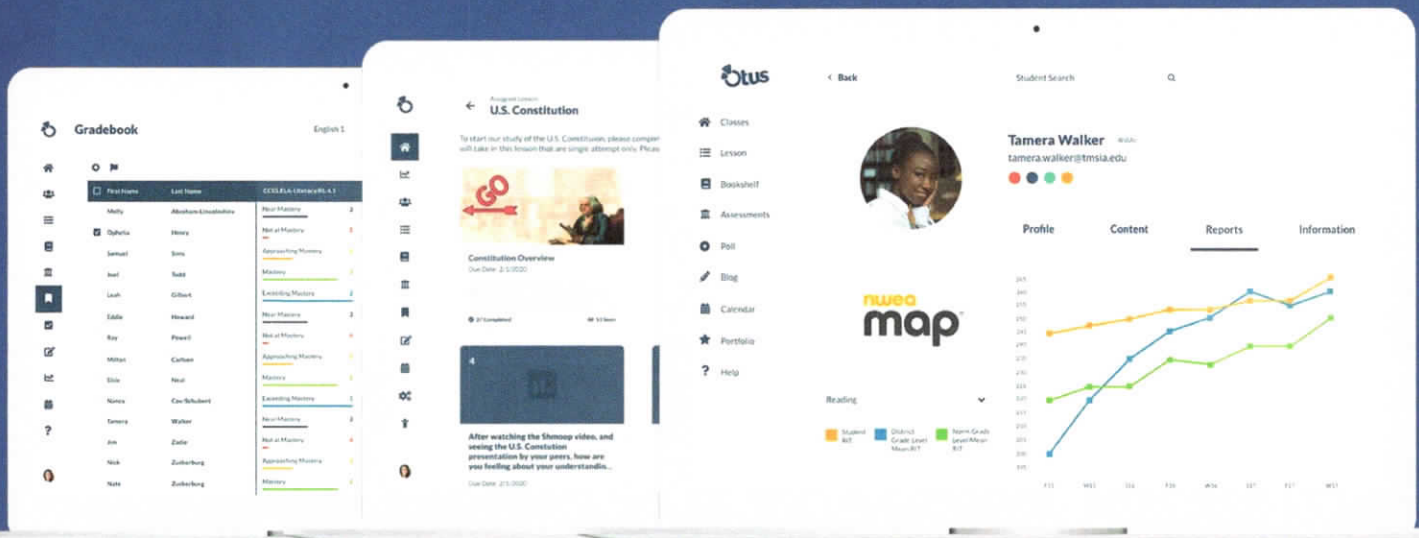
  
**Superintendent**

**Date:** 11/9/2021

The Floyd County Board of Education does not discriminate on the basis of race, color, national origin, age, religion, marital status, sex, or disability in employment, educational programs, or activities as set forth in Title IX & VI, and in Section 504.



## Proposal



## Floyd County Schools

Prepared for:

Denise Isaac  
denise.isaac@floyd.kyschools.us  
Floyd County Schools

Created by:

Cedric Harrison  
cedric@otus.com  
Otus



Nov 04, 2021

Denise Isaac  
Director of Information Technology  
Floyd County Schools  
106 N FRONT AVE  
PRESTONSBURG, KY41653-7832

Dear Denise Isaac,

It is with pleasure that I provide you an official proposal for Otus. We believe this proposal reflects a deep understanding of your needs while also providing you with the information needed to begin your journey with us.

Should you have any questions about Otus, this proposal, or anything else, please do not hesitate to contact me directly.

Sincerely,

*Cedric Harrison*

Cedric Harrison  
Director of Strategic Sales  
cedric@otus.com  
8032188588  
900 N. Michigan Ave  
Suite 1600  
Chicago, IL 60611



# Table of Contents

## What is Otus?

Our Mission and Beliefs

Our Values

Our Leadership Team

## Implementation

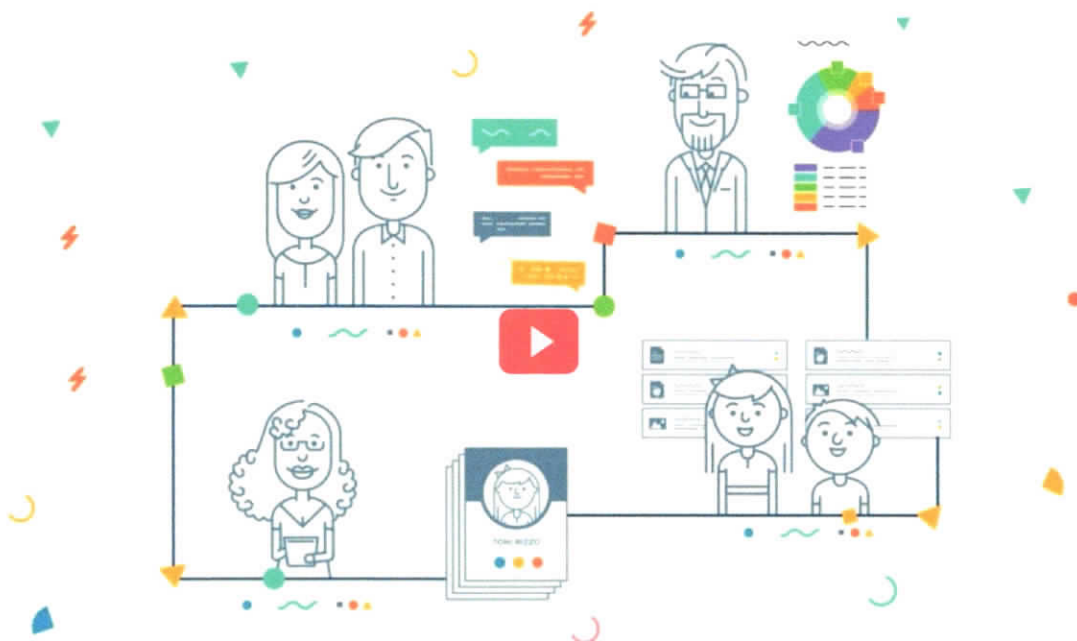
## Client Services

Data-driven client success

A few words from our clients

## Pricing Proposal for [Account.Name]

# What Is Otus?







## What is Otus?

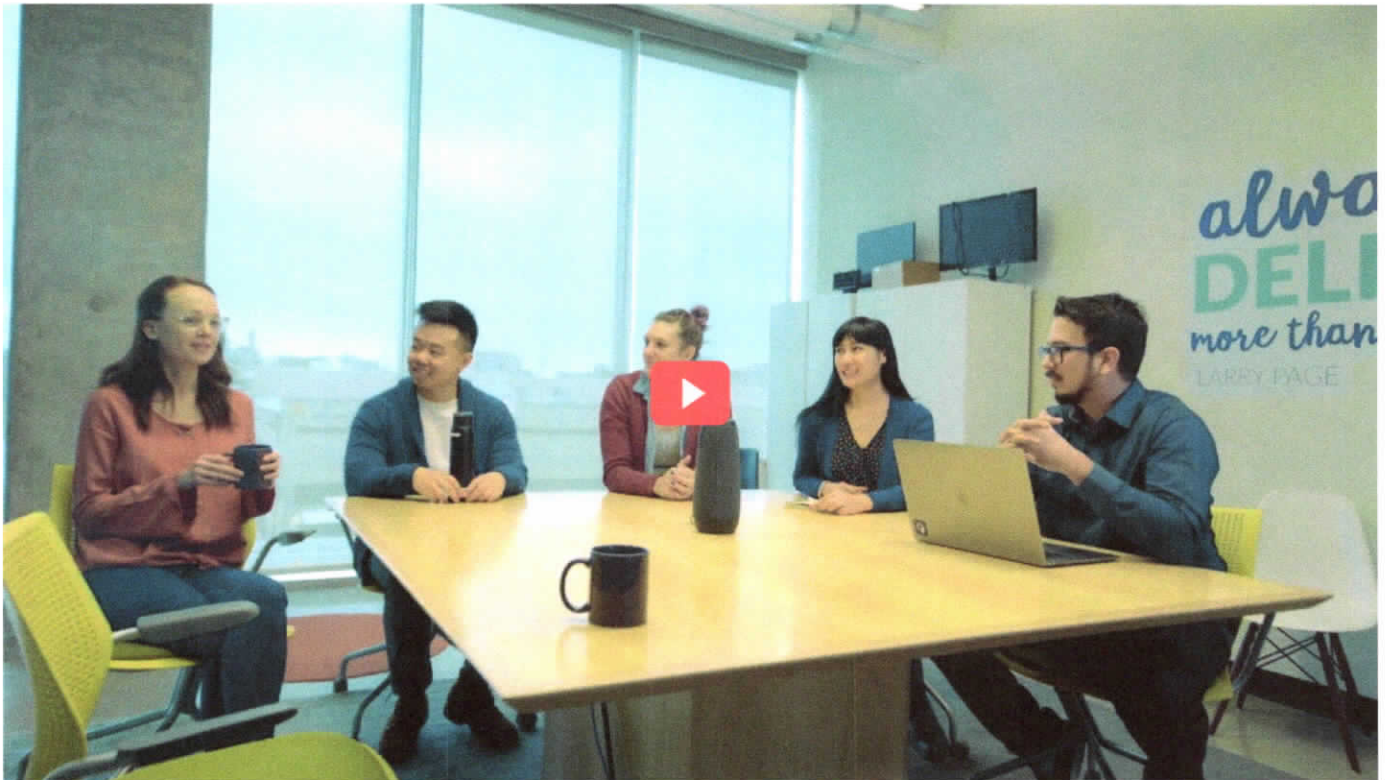
Otus is a single teaching and learning platform that is used by K-12 stakeholders to teach, grade, analyze, and plan.

## What initiatives can be supported through the use of Otus?

Otus is a solution built to support the organization initiatives by creating integrated classroom tools for students and teachers. These tools create powerful transparency for families and school leaders and most often support the following initiatives.

- Standards-Based Grading & Reporting
- Personalized Learning
- Common Assessments
- Benchmark and Formative Assessments
- Differentiation
- Data-Informed Instruction
- Leveraging Google in 1:1 Classrooms
- Blended Learning & 1:1
- Communication, Collaboration & Culture
- Social-Emotional Learning
- Support for At-Risk Learners
- Addressing Learning Loss

## Why Does Otus Exist?





## Our Mission And Beliefs

Our mission is to give students, teachers, school leaders, and families the tools and insight necessary to create a culture of success while maximizing learning.

- **Students** should be empowered by access to technology, not burdened by it.
- **Teachers** do their best work when they can focus on supporting the learning, not managing technology.
- **School leaders** need visibility of collected performance data.
- **Families** should feel connected and able to support learning at home.

## Our Values

**Authenticity:** Otus was created and built for teachers, by teachers. This unique characteristic is the foundation for the future development and implementation of the platform.

**Transparency:** The voice of educators is invaluable to the constant evolution of the Otus platform. We will continually strive to keep our users informed about new features, updates to existing ones, and the exciting future of Otus.

**Empathy:** The challenges that students and teachers face in the classroom are what motivates our team to create new solutions within Otus. We work to organize the chaos; shine light on the great experiences that are already happening and provide an opportunity to implement meaningful improvements.

**Courage:** We believe in challenging the status quo when necessary. We work to serve all students and teachers, especially the traditionally underserved or those at risk of falling through the cracks.





## Our Leadership Team

### **Andy Bluhm, Chief Executive Officer, Co-Founder**

Otus is fully owned and operated by Andy Bluhm, a Chicago-based investor and philanthropist. While Andy's investments are diverse, educational technology is of particular importance to him. Andy and our co-founders started with the belief that Otus is here to give students, teachers, school leaders, and families both the tools and the insight necessary to create a culture of success while maximizing learning.

### **Christopher Hull, Chief Product Officer, Veteran K-12 Educator**

Until mid 2017, Chris was a social studies teacher in the Chicago suburbs and Andy Bluhm collaborated on the creation of Otus beginning in 2012 when Chris and his co-teacher at Elm Place Middle school received a grant to bring 1:1 computing iPads to their students. They quickly recognized the potential these classroom management tools offer but were disappointed with the effectiveness of the current apps on the market.

### **Keith Westman, Ed.D., Chief Operating Officer, Veteran K-12 Educator**

Keith brings significant experience to Otus having worked with thousands of school systems to implement educational technology in those organizations during his tenure at AppliTrack / Aspex Solutions (now Frontline Education). Prior to his work in edtech, Keith was a middle school principal, district technology director, and classroom teacher. Keith also serves as an adjunct professor at DePaul University in Chicago.

### **Phil Collins, Ed.D., Chief Learning Officer, Veteran K-12 Educator**

Phil brings over 30 years of education experience to this project. He has worked as a Superintendent of Schools, Assistant Superintendent of Curriculum and Instruction, a building principal, and classroom teacher. Phil is a regular presenter for NWEA at their local, regional, and national conferences. Phil serves as an adjunct professor at Governors State University in Chicago.





# Implementation

As longtime educators, the Otus team completely understands the need to get your district up and running with our platform as quickly as possible. The process of implementing Otus is the first step in creating a meaningful relationship with, what we believe to be, the most useful tool at the tip of your fingers. With a personal technology coach and an in-app chat support feature, the whole Otus team is on board to guide you towards success!

You will quickly see that our priority with implementation is to make certain your district reaches its goals. You will be assigned a personal technology coach, who will help you determine the specific needs of your district. Once these requirements have been determined, you and your coach will come up with a plan of action to accomplish these goals, together. With our on-site and remote implementation plan, our team at Otus will be with you every step of the way!

## 4 STEPS OF IMPLEMENTATION AND ONBOARDING

Our dedicated team of Otus Technology Coaches are the best of both worlds: many years of experience as K-12 educators and expertise with the rollout of Otus to K-12 school systems like yours.

### Step 1: Meet Your Otus Technology Coach

Work with a dedicated Otus expert throughout your entire implementation of Otus to ensure that each step of the process is easy and manageable.

### Step 2: Roster Otus with Your Data

With your Otus Technology Coach, you will be guided through the process of connecting your SIS to Otus.

### Step 3: Data Upload

Along with our help and support, you will share your 3rd-Party student assessment data with us through a secure data transfer process so that it can be visualized within Otus.

### Step 4: Schedule Training

Determine the goals of your training, choose a date and format, and let us design a great day of learning for you and your staff.





# Client Services

Ensuring clients have the best user experience is incredibly important to Otus. After you are onboarded by your Technology Coach, our caring Client Success team takes over to support you throughout the year while a dedicated Account Manager stays connected to you throughout our partnership.

## Data-Driven Client Success

93%

of all support request  
rated Great or Amazing  
during 2020-21

3m 23s

is our median response time to teacher,  
admin, or parent support chats during  
2020-21

1,478

educator hours saved  
using our AI-powered  
support features during  
2020-21

## A Few Words From Our Clients

8:33 AM



Yes thank you.  
By the way... I have been  
working tirelessly with your  
team during this school year,  
and have had several teachers  
say they have been using your  
chat feature, collectively we  
have experienced wonderful  
customer service. Thank you  
for being prompt and diligent.



Thank you so much this chat  
feature is by far the best help  
via a virtual platform

thank you for being  
understanding and  
knowledgeable

1m · 🗨

You should hear our  
parents raving about  
how awesome it is this  
year with remote  
learning

We were all google docs  
in k-5 and now with otus  
they love it

My k-5 teachers are  
ASKING me to put our  
envision tests in there  
too!

Win win



I have received amazing feedback from parents about how much they like  
Otus. They love that all their child's work and links are within the same  
program and students are going to multiple places. So kudos to you. :)

I appreciate your help. Have a wonderful afternoon.



1m · 🗨



## Pricing Proposal For Floyd County Schools

Nov 04, 2021

Annual SaaS Subscription	Rate	Subtotal
Otus Staff & Students <ul style="list-style-type: none"><li>Subscription includes Otus for Staff &amp; Students and Navigate Item bank for 67 month term beginning Dec 1st 2021.</li></ul>	\$182,203.00	\$182,203.00

**Total** **\$182,203.00**

Initial One-Time Cost	Quantity	Rate	Subtotal
Setup & Implementation <ul style="list-style-type: none"><li>Dedicated Implementation contact to support getting student data rostered, 3rd party data uploaded, and your success</li></ul>	1	\$4,125.00	\$4,125.00
Remote Training (Included in Setup Cost) <ul style="list-style-type: none"><li># of days will be determined during Kickoff meeting with Coach</li></ul>	0	\$0.00	\$0.00

**Total** **\$4,125.00**

This proposal has been accepted by:

Name

Title

Please enter PO Number in box below. If you do not have PO number, type 0000 and send a copy to [cedric@otus.com](mailto:cedric@otus.com) when available.



Date of Acceptance:

67 Month Subscription to be invoiced and paid upfront in full December 2021

This proposal is valid for 30 days from the date of receipt.

### Terms

To view our Terms of Service, [click here](#).

To view our Privacy Policy, [click here](#).



900 North Michigan Avenue | Suite 1600 | Chicago, IL | 60611

January 1, 2021

Re: Otus Sole Source Letter effective until 6/30/2023

To Whom it May Concern,

This is a single source letter to let you know that the product Otus is an exclusive product to Otus, LLC. Otus is the creator, developer, and seller of this product and we will answer any questions you have about this product and support the application of this product if necessary.

Please feel free to contact me directly if you have any questions about Otus.

Sincerely,

Keith Westman, Ed.D.  
Chief Operating Officer  
773.789.5444 x102  
keith@otus.com