



FIELD OBSERVATION REPORT

2019-03 (Scott HS)

■ TO:	Kenton County Board of Education 1055 Eaton Drive Ft. Wright, KY 41017	■ DATE:	2019.03.19
ATTENTION:	Mr. Rob Haney		
■ FROM:	Mark Perry mperry@pca-arch.com 1881 Dixie Highway, Suite 130 Fort Wright, KY 41011 V: 859.431.8612 • F: 859.431.8611	■ PROJECT:	Kenton County School District Scott High School – Phase IV
COPIES TO:	Mr. David Lloyd, Mr. Danny Mann, Ms. Carrie Hooten	PROJECT NO.:	2016-124

■ WE TRANSMIT THE ATTACHED ITEMS VIA: **EMAIL**

PURPOSE	<input type="checkbox"/> For your use	DISPOSITION	<input type="checkbox"/> No exceptions noted
	<input type="checkbox"/> As requested		<input type="checkbox"/> Exceptions noted, Revise as indicated.
	<input type="checkbox"/> For review and comment		<input type="checkbox"/> REJECTED: REVISE AND RESUBMIT
	<input type="checkbox"/> For information		
	<input checked="" type="checkbox"/> For record		
	<input type="checkbox"/> For approval		
	<input type="checkbox"/>		

COPIES	DATE	DESCRIPTION	PAGES
1	2019-03	Field Observation Report	6

Division 05: Metals

05.01: 2019.02.26 – Steel supports at locker islands had been installed in Corridor 2200 (south end) and 2200B. Wall locker supports were underway, but no steel plate tops were in place. It appeared all required locker steel was on site and staged for installation.

05.02: 2019.03.12 – A crew was actively installing the last of the steel at lockers.

Division 07: Thermal and Moisture Protection

07.01: 2019.02.26 – A sheet metal crew was actively working at the temporary metal siding/window opening outside of Classroom 2230B.

07.02: 2019.03.12 – Composite metal panel installation had started in the courtyard. Seven panels had been installed.

Division 08: Doors and Windows

08.01: 2019.02.26 – Windows had been installed with the exception of Classroom 2230B and the band room. Frosted glass panes for the exterior windows had yet to be delivered. The contractor had installed plywood and/or insulation board in the frosted glass openings.

Division 09: Finishes

09.01: 2019.02.26 – Terrazzo had been poured at both the upper and lower level corridors. A rough grind had been completed only at half of the lower level.

09.02: 2019.02.26 – Ceiling grid had been hung in upper level corridors.

09.03: 2019.03.12 – Ceiling grid had been hung down the balance of Corridor 1200B.



09.04: 2019.03.12 – All terrazzo had received a rough grind. The upper level corridor may have received a second grind as well.

09.05: 2019.03.12 – Additional gypsum board finishing had occurred at operable partition bulkheads.

Division 20-28: MEP

20-28.01: 2019.02.26 – The electrician was actively installing light fixtures in Corridor 2200.

20-28.02: 2019.02.26 – Toilet fixtures were being staged for installation in upper level restrooms.

20-28.03: 2019.03.12 – Light fixtures had been energized in the multi-purpose room.

20-28.04: 2019.03.12 – Plumbing fixtures had been hung in the special needs restroom and in upper level restrooms.

CONSTRUCTION PHOTOS



2019.02.26 – South wall, upper level



2019.02.26 – Classroom 2256B



2019.02.26 – Corridor 2200B



2019.02.26 – Classroom 2252



2019.02.26 – Classrooms 2240A/B



2019.02.26 – Misc. locker steel staged



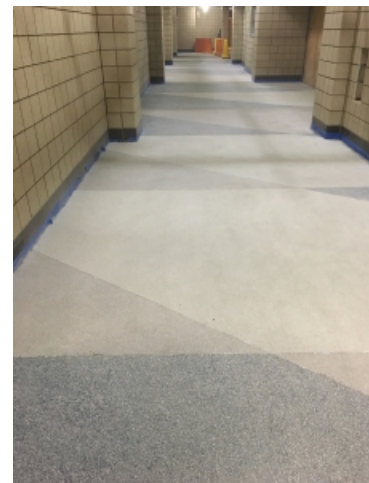
2019.02.26 – Classrooms 2260A/B/C



2019.02.26 – Plumbing fixtures staged for installation



2019.02.26 – Corridor 2100A



2019.02.26 – Corridor 1100A



2019.02.26 – Corridor 1200A



2019.02.26 – Corridor 1200B



2019.03.12 – East elevation



2019.03.12 – Corridor 1230A



2019.03.12 – Mechanical 1230B



2019.03.12 – Corridor 1200A



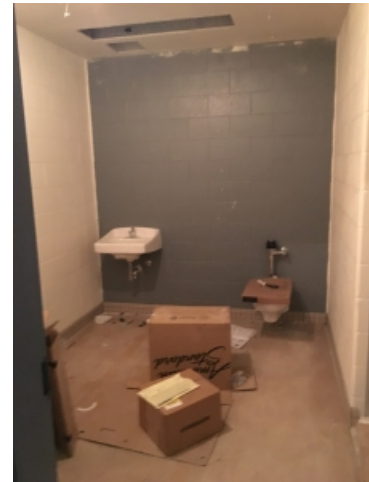
2019.03.12 – Multi-purpose room



2019.03.12 – Multi-purpose room



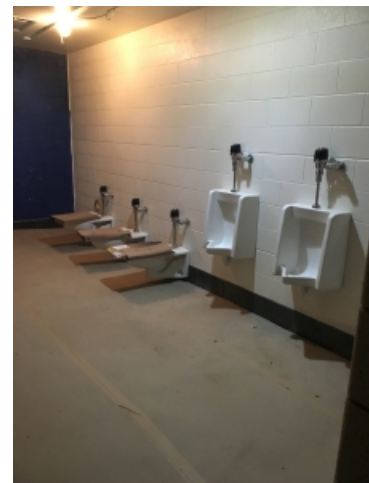
2019.03.12 - Courtyard



2019.03.12 – Special needs restroom



2019.03.12 – Restroom 2202



2019.03.12 – Restroom 2201



2019.03.12 – Corridor 2100A



2019.03.12 – Corridor 2100A



2019.03.12 – Classroom 2230A



2019.03.12 – Corridor 2200

- ☐ Please acknowledge receipt of transmitted items.
- ☐ Return transmitted items to PCA ARCHITECTURE ^{PSC}.

END