



FIELD OBSERVATION REPORT

2019.01

■ TO:	Kenton County Board of Education 1055 Eaton Drive Ft. Wright, KY 41017	■ DATE:	2019.01.16
ATTENTION:	Mr. Rob Haney		
■ FROM:	Ralph Cooper rcooper@pca-arch.com 1881 Dixie Highway, Suite 130 Fort Wright, KY 41011 V: 859.431.8612 • F: 859.431.8611	■ PROJECT:	Kenton County School District Hinsdale Elementary
COPIES TO:	Mr. Danny Mann	PROJECT NO.:	2017-074

■ WE TRANSMIT THE ATTACHED ITEMS VIA: EMAIL

PURPOSE	<input type="checkbox"/> For your use	DISPOSITION	<input type="checkbox"/> No exceptions noted
	<input type="checkbox"/> As requested		<input type="checkbox"/> Exceptions noted, Revise as indicated.
	<input type="checkbox"/> For review and comment		<input type="checkbox"/> REJECTED: REVISE AND RESUBMIT
	<input type="checkbox"/> For information		
	<input checked="" type="checkbox"/> For record		
	<input type="checkbox"/> For approval		
	<input type="checkbox"/>		

COPIES	DATE	DESCRIPTION	PAGES
1	2019.01	Field Observation Report	12

Division 02: Site Work and Demolition

02.01: 2018.12.17 – The site around the building has been finish graded. The area still needs to be seeded and strawed.

02.02: 2018.12.17 – The landscaping has been installed.

Division 03: Concrete

03.01: 2018.12.10 – The defective exterior entry stairs have been removed.

03.02: 2019.01.07 – The exterior entry stairs have been repoured.

Division 04: Masonry

04.01: No items noted.

Division 05: Metals

05.01: 2018.12.10 – Work continues on the stainless steel handrails.

05.02: 2019.01.07 - Work continues on the stainless steel handrails.

Division 06: Carpentry

06.01: 2018.12.10 – Casework installation in nearly completion. Some remedial repairs will be needed.

06.02: 2018.12.17 – Casework installation is complete except for installation of the drawers.

06.03: 2019.01.07 – The glass shelving and glass doors have been installed in the display case.



06.04: 2019.01.07 – The correct drawers have been installed in the casework.

Division 07: Thermal and Moisture Protection

07.01: 2018.12.10 – The roof coping has been installed. The Contractor was notified of two areas that needed corrections.

07.02: 2019.01.07 – Installation of the exterior soffit material has started. The installer ran out of material and had to order additional material.

Division 08: Doors and Windows

08.01: 2018.12.10 – Repair work continues on the storefront system.

08.02: 2019.01.07 – The glazing subcontractor has stated he has completed repair work on the storefront system.

08.03: 2019.01.07 – Installation of the access control system is in progress.

Division 09: Finishes

09.01: 2018.12.10 – Installation of carpet tile is in progress.

09.02: 2018.12.10 – The wall tile has been installed in the toilet rooms.

09.03: 2018.12.17 – The corner guards have been installed.

09.04: 2019.01.07 – The linoleum flooring has arrived. Installation is supposed to start in a couple days.

Division 10: Specialties

10.01: 2019.01.07 – The room signage has been installed.

10.02: 2019.01.07 – The fire extinguisher cabinets have been installed.

10.03: 2019.01.07 – The tack boards have been installed.

10.03: 2019.01.07 – The toilet accessories have been installed.

10.04: 2019.01.07 – The exterior window roller shades have been installed.

Division 15: Plumbing and HVAC

15.01: 2018.12.10 – The lavatory has been installed in the Nurse's Office.

15.02: 2018.12.10 – Installation of the toilet room lavatories is in progress.

15.03: 2018.12.17 – Installation of the plumbing fixtures has been completed.

15.04: 2018.12.17 – Installation of the janitor sink has been completed.

Division 16: Electric

16.01: 2018.12.10 – The light fixture has been installed in the display case.

16.02: 2018.12.10 – Light fixtures have been installed in the Lobby.

16.03: 2018.12.10 – Exit signs have been installed.

16.04: 2018.12.10 – The light fixtures have been installed in the toilet rooms.



CONSTRUCTION PHOTOS



2018.12.10 – The roof coping has been installed.



2018.12.10 – The roof coping has been installed.



2018.12.10 – Repair work continues on the entry storefront.



2018.12.10 – Lighting has been installed in the display case.



2018.12.10 – Light fixtures have been installed in the Lobby.



2018.12.10 – Light fixtures have been installed in the Lobby.



2018.12.10 – The reception desk has been installed.



2018.12.10 – Misc. repairs need to be made on the repair desk.



2018.12.10 – Installation of the carpet tile has started.



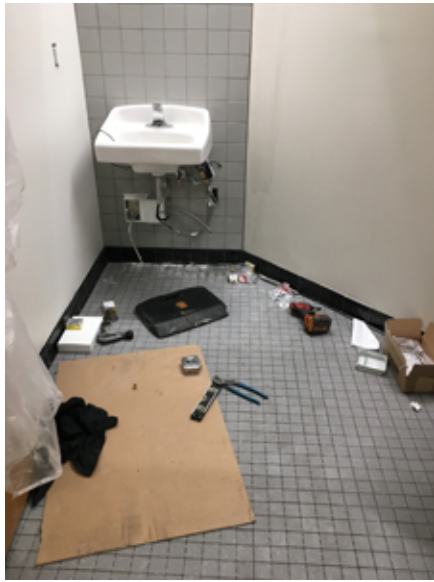
2018.12.10 – The lavatory has been installed in the Nurses Office.



2018.12.10 – Installation of the carpet tile has started.



2018.12.10 – Installation of the carpet tile has started.



2018.12.10 – Installation of the toilet fixtures is in progress.



2018.12.10 – Light fixtures have been installed in the toilet rooms.



2018.12.10 – View in the vestibule.



2018.12.10 – The defective exterior concrete stairs have been installed.



2018.12.10 – Repair work continues on the stainless steel handrails.



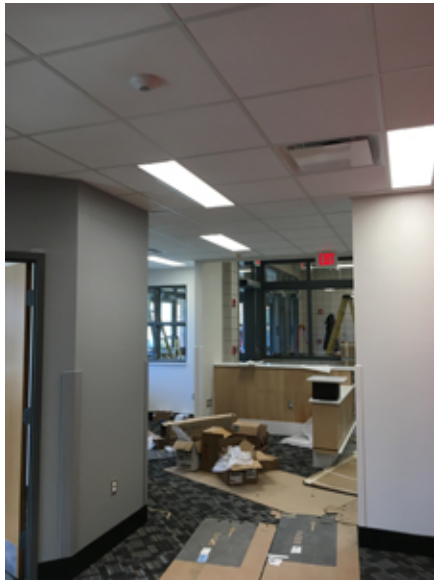
2018.12.17 – Final grading has been completed.



2018.12.17 – The landscaping has been installed.



2018.12.17 – Installation of the toilet fixtures has been completed.



2018.12.17 – View in the office area.



2018.12.17 – The janitor sink has been installed.



2018.12.17 – View in the lobby.



2019.01.07 – The exterior concrete stairs have been repoured.



2019.01.07 – The glazing subcontractor has stated the repair work on the storefront system has been completed.



2019.01.07 – Installation of the exterior metal soffit has started.



2019.01.07 – Installation of the access control system is in progress.



2019.01.07 – Installation of the glass shelving and doors has been completed at the display case



2019.01.07 – View in the office area.



2019.01.07 – View in the lobby.



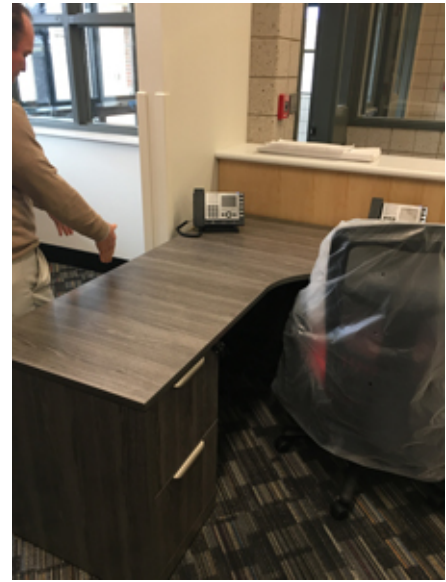
2019.01.07 – The tack boards have been installed in the vestibule



2019.01.07 – Exit signages has been installed.



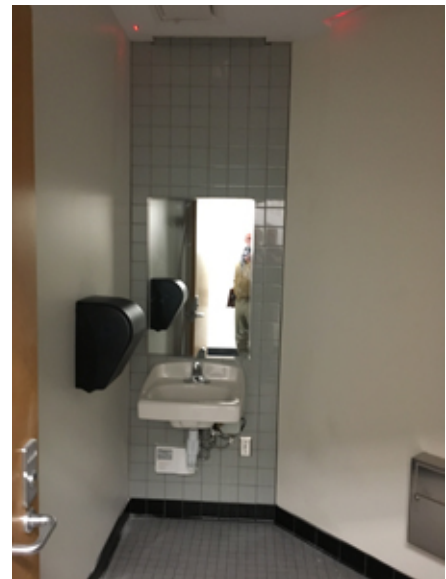
2019.01.07 – The toilet accessories have been installed.



2019.01.07 – The office furniture has been installed.



2019.01.07 – View into vestibule.



2019.01.07 – The toilet accessories have been installed.



2019.01.07 – View into the mechanical room.



2019.10.07 – View of the landscaping.

- ☐ Please acknowledge receipt of transmitted items.
- ☐ Return transmitted items to PCA ARCHITECTURE ^{PSC}.

END