

ELECTRICAL LEGEND

LIGHTING	
SYMBOL	DESCRIPTION
	SURFACE MOUNTED LUMINAIRE (NORMAL & EMERGENCY)
	RECESSED LUMINAIRE (NORMAL & EMERGENCY)
	WALL MOUNTED LUMINAIRE (NORMAL AND EMERGENCY)
	SURFACE MOUNTED LUMINAIRE (NORMAL AND EMERGENCY)
	INDUSTRIAL STRIP LUMINAIRE (NORMAL AND EMERGENCY)
	TWO-HEAD EMERGENCY LIGHTING UNIT
	EMERGENCY REMOTE HEAD (SINGLE OR DOUBLE)
	EMERGENCY EXIT SIGN - SINGLE FACE WITH ARROWS AS INDICATED
	WALL AND CEILING MOUNTED
	EMERGENCY EXIT SIGN - DOUBLE FACE
	OCCUPANCY SENSOR
	LIGHT SWITCH

POWER	
SYMBOL	DESCRIPTION
	DUPLEX RECEPTACLE
	JUNCTION BOX
	EXISTING SURFACE MOUNTED PANELBOARD/DISTRIBUTION
	EXISTING FLUSH MOUNTED PANELBOARD; X - INDICATES IDENTIFICATION
	BRANCH CIRCUIT HOMERUN TO PANELBOARD. THE NUMBER OF TICK MARKS INDICATES THE NUMBER OF CONDUCTORS. LONG TICK MARKS REPRESENT UNGROUNDED CONDUCTORS. SHORT TICK MARKS REPRESENT GROUNDED CONDUCTORS (NEUTRAL). A GROUNDING CONDUCTOR (GROUND) SHALL BE INSTALLED WITH ALL CIRCUITS. TICK MARKS AND CONDUCTOR SIZES ARE ONLY SHOWN ON THE HOMERUN. INSTALL THE REQUIRED QUANTITY AND SIZE CONDUCTORS TO EACH DEVICE ON THE SAME CIRCUIT AS INDICATED ON THE DRAWINGS. MINIMUM CONDUCTOR SIZE = #12 MINIMUM CONDUIT SIZE = 3/4 INCH SUBSCRIPT EXAMPLE: 4#8 = (3) UNGROUNDED AND (1) NEUTRAL CONDUCTORS SIZE IF OTHER THAN #12 1#10 = GROUNDING CONDUCTOR SIZE IF OTHER THAN #12 1"C = CONDUIT SIZE A-1 = PANEL NAME - POLE POSITION IN PANEL

FIRE ALARM	
SYMBOL	DESCRIPTION
	FIRE ALARM MANUAL PULL STATION
	FIRE ALARM INITIATION DEVICE - SUBSCRIPT INDICATES THE FOLLOWING : S - SMOKE, H - HEAT
	FIRE ALARM CONTROL PANEL. PANEL IS RECESSED TYPE WHEN SHOWN WITHIN WALLS ON DRAWING.

SYSTEMS	
SYMBOL	DESCRIPTION
	EXISTING COMMUNICATIONS OUTLET
	INTERCOM SPEAKER (CEILING; RECESSED WALL-MOUNTED; HORN-TYPE WALL MOUNTED)
	CEILING MOUNTED SECURITY SYSTEM CAMERA
	WALL MOUNTED SECURITY SYSTEM CAMERA

DEMOLITION vs EXISTING LINE WEIGHTS	
DEMO	EXISTING

ABBREVIATIONS	
±10'	+10' INDICATES THE MOUNTING HEIGHT OF THE DEVICE TO BOTTOM.
1Ø	1-PHASE
3Ø	3-PHASE
ATS	AUTOMATIC TRANSFER SWITCH
BTM	BOTTOM
C	DEVICE TO BE INSTALLED 4 INCHES ABOVE COUNTER BACKSPLASH.
W	DEVICE TO BE WALL MOUNTED 48 INCHES ABOVE FLOOR.
WG	PROVIDE DEVICE WITH MANUFACTURER'S WIREGUARD.
WP	PROVIDE DEVICE WITH WEATHERPROOF COVER. RECEPTACLES TO BE WEATHER-RESISTANT TYPE AND PROVIDED WITH A CAST ALUMINUM, EXTRA DUTY, WHILE-IN-USE COVER.

GENERAL NOTES:

GENERAL REQUIREMENTS

- A. ALL DRAWINGS AND GENERAL PROVISIONS OF THE CONTRACT, INCLUDING THE GENERAL AND SUPPLEMENTARY CONDITIONS AND DIVISION 01 SPECIFICATIONS, APPLY TO ALL ELECTRICAL SPECIFICATIONS.
- B. ALL WORK PERFORMED SHALL COMPLY WITH ALL RELEVANT CODES ADOPTED BY THE STATE AND LOCALITY IN WHICH THE PROJECT IS LOCATED .
- C. THE CONTRACTOR IS RESPONSIBLE FOR OBTAINING AND PAYING FOR ALL BUILDING PERMITS, FEES, LICENSES, AND INSPECTIONS REQUIRED BY GOVERNING AGENCIES.
- D. ALL MATERIALS, LABOR, EQUIPMENT, OR SERVICES NOT SPECIFICALLY MENTIONED WHICH MAY BE NECESSARY TO COMPLETE ANY PART OF THE ELECTRICAL SYSTEMS DESCRIBED SHALL BE INCLUDED AS PART OF THE CONTRACT.
- E. CONTRACTOR SHALL COORDINATE EQUIPMENT CONNECTION LOCATIONS PRIOR TO INSTALLATION.
- F. ENGINEER HAS USED THE SPECIFIC CHARACTERISTICS OF THE BASIS-OF-DESIGN PRODUCT(S) IN COORDINATION WITH OTHER TRADES. THESE CHARACTERISTICS INCLUDE, BUT ARE NOT LIMITED TO: DIMENSIONS, WEIGHT, WORKING CLEARANCES AND INTERCONNECTIONS WITH OTHER TRADES. IF THE CONTRACTOR ELECTS TO PROVIDE AN ALTERNATIVE PRODUCT(S) TO THE BASIS-OF-DESIGN WILL ARISES CHARACTERISTICS AFFECTING OTHER TRADES, IT IS THE CONTRACTOR'S RESPONSIBILITY TO COORDINATE ALL DIFFERENCES AND FINANCIALLY COMPENSATE OTHER TRADES. REQUESTED INCREASES TO THE CONTRACTED COSTS WILL NOT BE ACCEPTED.
- G. ALL ELECTRICAL COMPONENTS, DEVICES, AND ACCESSORIES SHALL BE LISTED AND LABELED AS DEFINED IN NFPA 70, ARTICLE 100, BY A TESTING AGENCY ACCEPTABLE TO AUTHORITIES HAVING JURISDICTION AND MARKED FOR INTENDED USE.
- H. AT A MINIMUM THE CONTRACTOR SHALL WARRANTY ALL DEFECTS IN MATERIAL AND LABOR FOR ONE YEAR STARTING FROM THE DATE OF SUBSTANTIAL COMPLETION.
- I. CONTRACTOR SHALL MAINTAIN A SET OF MARKED-UP PAPER DRAWINGS FOR RECORD DRAWINGS. MARKS SHALL BE MADE USING A COLORED INSTRUMENT. RECORD DRAWINGS ARE TO INCORPORATE ANY DEVIATIONS FROM THE CONTRACT DOCUMENTS.
- J. CONTRACTOR SHALL NOTIFY THE ENGINEER A MINIMUM OF ONE WEEK PRIOR FOR THE PERFORMANCE OF A PUNCH LIST.

PENETRATION FIRE STOPPING

- A. PROVIDE FIRE AND/OR SMOKE STOPPING AROUND ANY COMPONENTS WHICH PENETRATE RATED ASSEMBLIES AS REQUIRED TO MAINTAIN THE RATING OF THAT ASSEMBLY.

GROUNDING

- A. PROVIDE GROUNDING OF ALL ELECTRICAL INSTALLATIONS, INCLUDING BUT NOT LIMITED TO METAL RACEWAYS, METAL ENCLOSURES, AND CIRCUIT CONDUCTORS. PROVIDE GROUNDING CONDUCTOR FOR ALL BRANCH CIRCUITS AND FEEDERS..

RACEWAYS, BOXES, & POWER CONDUCTORS

- A. ALL CONDUCTORS TO BE COPPER, THHN/THWN/THWN-2, 90C, AND 600V RATED. MINIMUM CONDUCTOR SIZE TO BE #12 AWG.
- B. SOLID CONDUCTORS FOR #10 AWG AND SMALLER; STRANDED CONDUCTOR FOR #8 AWG AND LARGER.
- C. ALL RACEWAYS SHALL BE EMT AND A MINIMUM OF 3/4 INCH WITH STEEL COMPRESSION TYPE FITTINGS UNLESS NOTED OTHERWISE.
- D. ALL JUNCTION BOXES TO BE STEEL.
- E. ALL CONDUIT, RACEWAYS, BOXES, ETC SHALL BE INSTALLED CONCEALED UNLESS INSTALLED IN MECHANICAL ROOMS, AREAS WITH EXPOSED CEILINGS, OR ON EXISTING WALLS.
- F. LABEL ALL JUNCTION BOXES WITH BLACK PERMANENT MARKER, IDENTIFYING THE CIRCUIT NUMBERS CONTAINED WITHIN.
- G. PROVIDE A TYPED DIRECTORY INDICATING CIRCUIT LOADS FOR ANY PANEL WITH NEW OR MODIFIED CIRCUITS.

COMMUNICATIONS CABLING

- A. COMMUNICATION CABLING SHALL BE CATEGORY 6 UTP AND PLENUM RATED.
- B. PROVIDE CONDUIT SLEEVES THROUGH WALLS AT EACH WALL INTERSECTION. SEAL PENETRATIONS AROUND CONDUIT SLEEVE.
- C. CABLING SHALL BE INSTALLED IN CONDUIT WHEN LOCATED IN AREAS WITH EXPOSED CEILINGS OR STRUCTURES, ABOVE INACCESSIBLE CEILINGS AND WHERE LOCATED WITHIN WALLS. CABLING INSTALLED ABOVE ACCESSIBLE, CONCEALED CEILINGS SHALL BE INSTALLED IN CONDUIT OR SHALL BE SUPPORTED BY J-HOOKS OR CABLE TRAY.
- D. SUSPEND CABLE NOT IN WIREWAY OR PATHWAY A MINIMUM OF 8 INCHES ABOVE CEILINGS BY J-HOOKS NOT MORE THAN 60 INCHES APART. CABLE SHALL NOT BE RUN THROUGH STRUCTURAL MEMBERS OR IN CONTACT WITH PIPES OR DUCT.
- E. AFTER INSTALLATION, CONTRACTOR SHALL TEST ALL CABLES TO ENSURE PROPER CONNECTION TO THE NETWORK. TEST REPORT SHALL BE SUBMITTED TO ENGINEER AND OWNER.

DEMOLITION

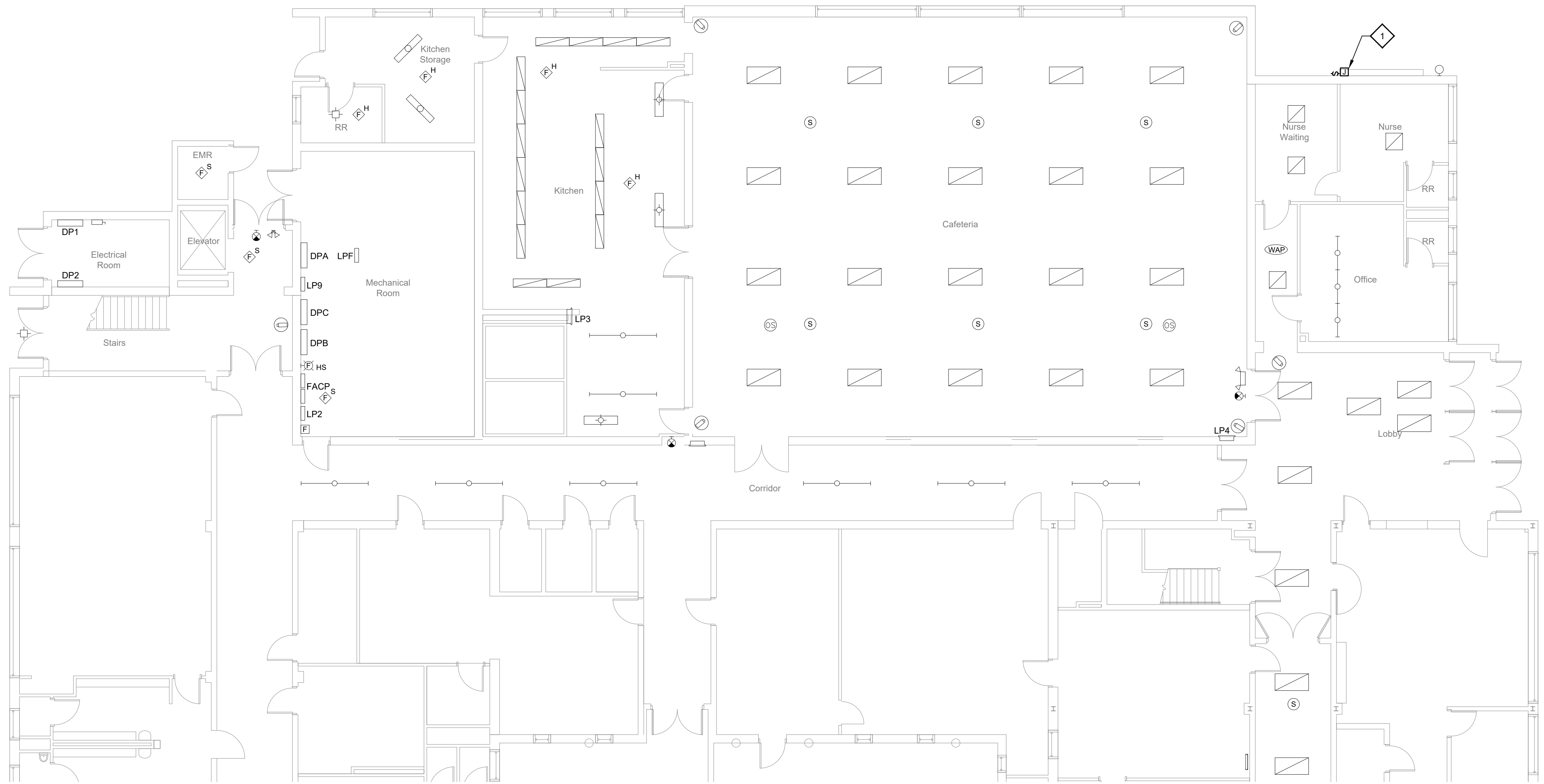
- A. ALL ELECTRICAL ITEMS SHOWN AS LIGHTER WEIGHT ARE EXISTING TO REMAIN UNLESS OTHERWISE NOTED.
- B. ALL ELECTRICAL ITEMS SHOWN IN HEAVIER WEIGHT SHALL BE REMOVED UNLESS OTHERWISE NOTED.
- C. THE CONDUIT, CONDUCTORS, HANGERS, SUPPORTS, CONCRETE BASES, HOUSEKEEPING PADS, AND ANY OTHER ITEMS ASSOCIATED WITH EQUIPMENT SHOWN TO BE REMOVED SHALL ALSO BE REMOVED UNLESS OTHERWISE NOTED. ALL CONDUCTORS SHALL BE REMOVED BACK TO THE SOURCE. ALL ACCESSIBLE CONDUITS SHALL BE REMOVED. EXISTING UNDERGROUND CONDUITS MAY BE ABANDONED IN PLACE AFTER THEIR ENDS HAVE BEEN REMOVED TO A MINIMUM OF 30 INCHES BELOW GRADE AND CAPPED.
- D. WHERE ANY EXISTING ELECTRICAL ITEMS ARE SHOWN TO BE REMOVED, THE ELECTRICAL CONTRACTOR SHALL RECONNECT WIRING AS REQUIRED TO ENSURE ALL DOWNSTREAM DEVICES REMAIN OPERATIONAL.
- E. REMOVE ALL EXISTING AND ACCESSIBLE ABANDONED LOW VOLTAGE CABLING. ACCESSIBLE AREAS INCLUDE, BUT NOT LIMITED TO, ABOVE LAY-IN CEILINGS, BELOW RAISED FLOORS AND EXPOSED LOCATIONS.
- F. THE ELECTRICAL CONTRACTOR IS RESPONSIBLE FOR PATCHING AND REPAIRING ALL AREAS WHERE WALLS, SLABS AND MATERIALS HAVE BEEN CUT, REMOVED OR MODIFIED AS A RESULT OF DEMOLITION. PATCHING AND REPAIRS SHALL MATCH THE ADJACENT EXISTING MATERIALS, RATINGS AND FINISHES.
- G. ALL EXISTING ITEMS SHOWN HAVE BEEN COMPILED FROM SITE SURVEYS, RECORD DRAWINGS AND VISUAL SITE INSPECTIONS. ALL ITEMS TO BE REMOVED MAY NOT BE SHOWN ON THIS DRAWING. THE CONTRACTOR SHALL VISIT THE SITE PRIOR TO BID TO BECOME FAMILIAR WITH THE EXTENT OF THE DEMOLITION WORK REQUIRED.
- H. THE ELECTRICAL CONTRACTOR IS RESPONSIBLE FOR KEEPING ALL EXISTING SYSTEMS ACTIVE UNTIL THEY ARE DEMOLISHED IN THEIR RESPECTIVE PHASES. PROVIDE ALL TEMPORARY CONNECTIONS AS REQUIRED. COORDINATE ALL DEMOLITION WORK WITH THE TIMING/SEQUENCE OF NEW WORK.
- I. WHERE THE CONTRACT DOCUMENTS INCLUDE THE REMOVAL OF THE EXISTING CEILINGS, EXISTING CEILING MOUNTED DEVICES NOT SHOWN TO BE REMOVED SHALL BE PROTECTED, SUPPORTED IN-PLACE AND REINSTALLED IN THE NEW CEILING.

INTERRUPTIONS OF SERVICE

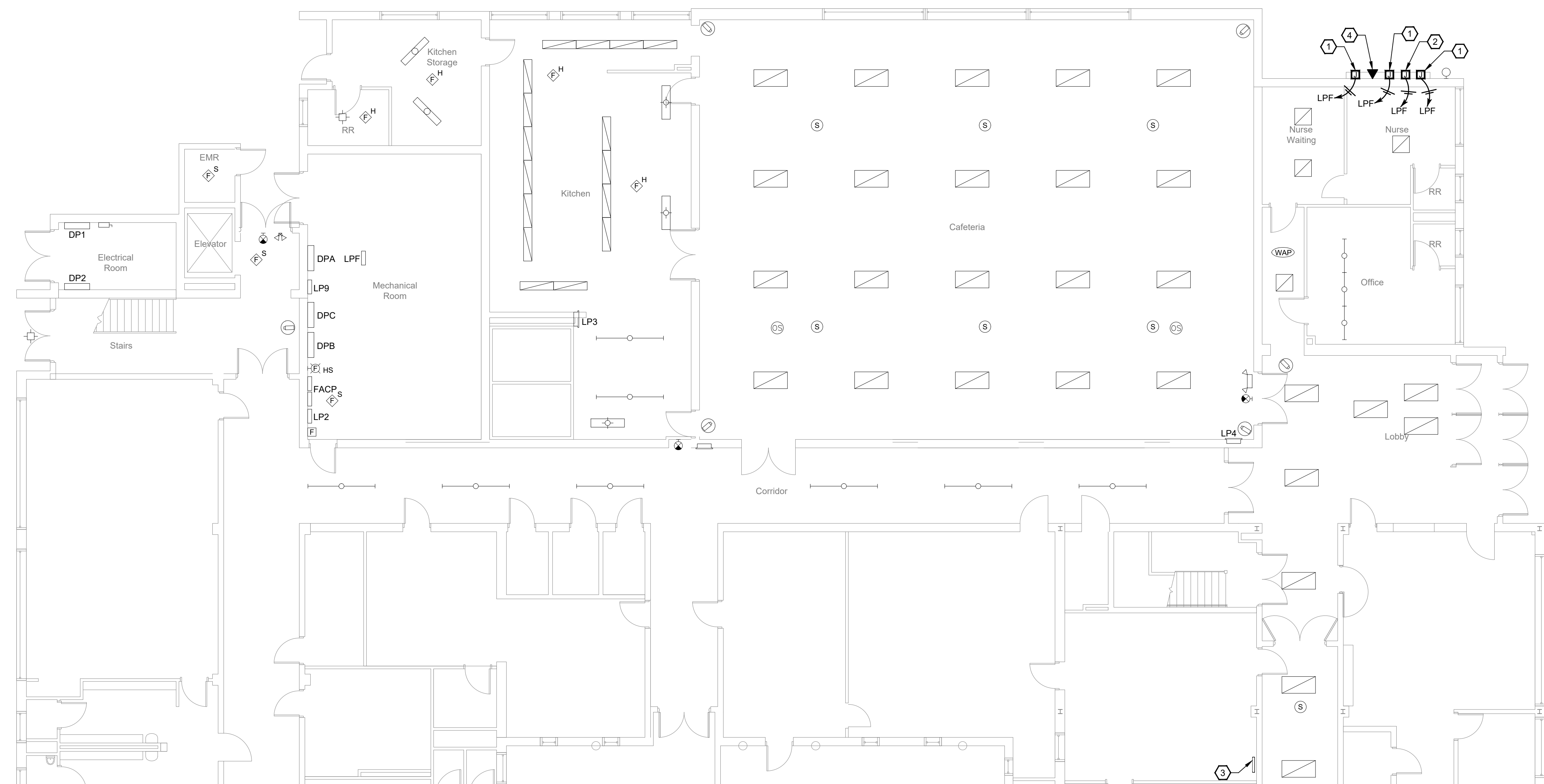
- A. THE BUILDING SERVICES AND SYSTEMS SHALL REMAIN OPERATIONAL THROUGHOUT THE DURATION OF THE PROJECT. IF INTERRUPTIONS TO ANY SERVICE OR SYSTEM ARE NECESSARY TO FACILITATE COMPLETING THE PROJECT, THE CONTRACTOR SHALL:
- A.A. APPRISE THE OWNER OF ANTICIPATED INTERRUPTIONS IN ADVANCE AND SCHEDULE FOR TIMES THAT ARE CONVENIENT TO THE OWNER AND ALL OTHER AFFECTED PARTIES.
- A.B. COORDINATE AN ACCEPTABLE DURATION AND WORK AS NECESSARY TO MEET THE AGREED UPON SCHEDULE.
- A.C. NO INTERRUPTIONS SHALL OCCUR PRIOR TO RECEIVING WRITTEN APPROVAL FROM THE OWNER AND ALL OTHER AFFECTED PARTIES.
- B. FOR UNPLANNED INTERRUPTIONS, THE CONTRACTOR SHALL WORK CONTINUOUSLY TO RESTORE THE AFFECTED SERVICE(S) AND SYSTEM(S).

SURFACE RACEWAY

- A. ALL SURFACE RACEWAYS SHALL BE WIREMOLD 700, AND 2400 SERIES OR APPROVED EQUAL UNLESS NOTED OTHERWISE.
- B. 700 SERIES SHALL BE USED FOR RECEPTACLES, SWITCHES AND FIRE ALARM DEVICES. 2400 SERIES SHALL BE INSTALLED FOR VOICE AND DATA CABLING.
- C. ALL SURFACE RACEWAY IS TO BE MOUNTED ON EXISTING WALLS ONLY. USE SUPPORTING CLIPS AND NOT MOUNTING STRAPS. THE CONTRACTOR HAS THE OPTION TO FISH FLEXIBLE CONDUIT DOWN EXISTING WALLS IN LIEU OF USING SURFACE RACEWAY.
- D. COORDINATE THE ROUTING OF ALL RACEWAY WITH WALL MOUNTED FURNISHINGS (I.E. TACKBOARDS, MARKERBOARDS, INTERACTIVE WHITEBOARDS, ETC.).
- E. EXPOSED RACEWAYS IN FINISHED AREAS ARE TO BE PRE-FINISHED WITH COLOR TO BE SELECTED BY ARCHITECT.



1 NEWPORT PRIMARY SCHOOL
ENLARGED FLOOR PLAN - ELECTRICAL DEMOLITION
SCALE: 1/8"=1'-0"



2 NEWPORT PRIMARY SCHOOL
ENLARGED FLOOR PLAN - ELECTRICAL
SCALE: 1/8"=1'-0"

GENERAL NOTES:

A. REFER TO SHEET E0.1 FOR GENERAL NOTES.

B. ALL PANELS ARE EXISTING TO REMAIN.

DEMOLITION KEYNOTES:

1. DEMOLISH ELECTRICAL CONNECTION TO EXISTING SIGN.

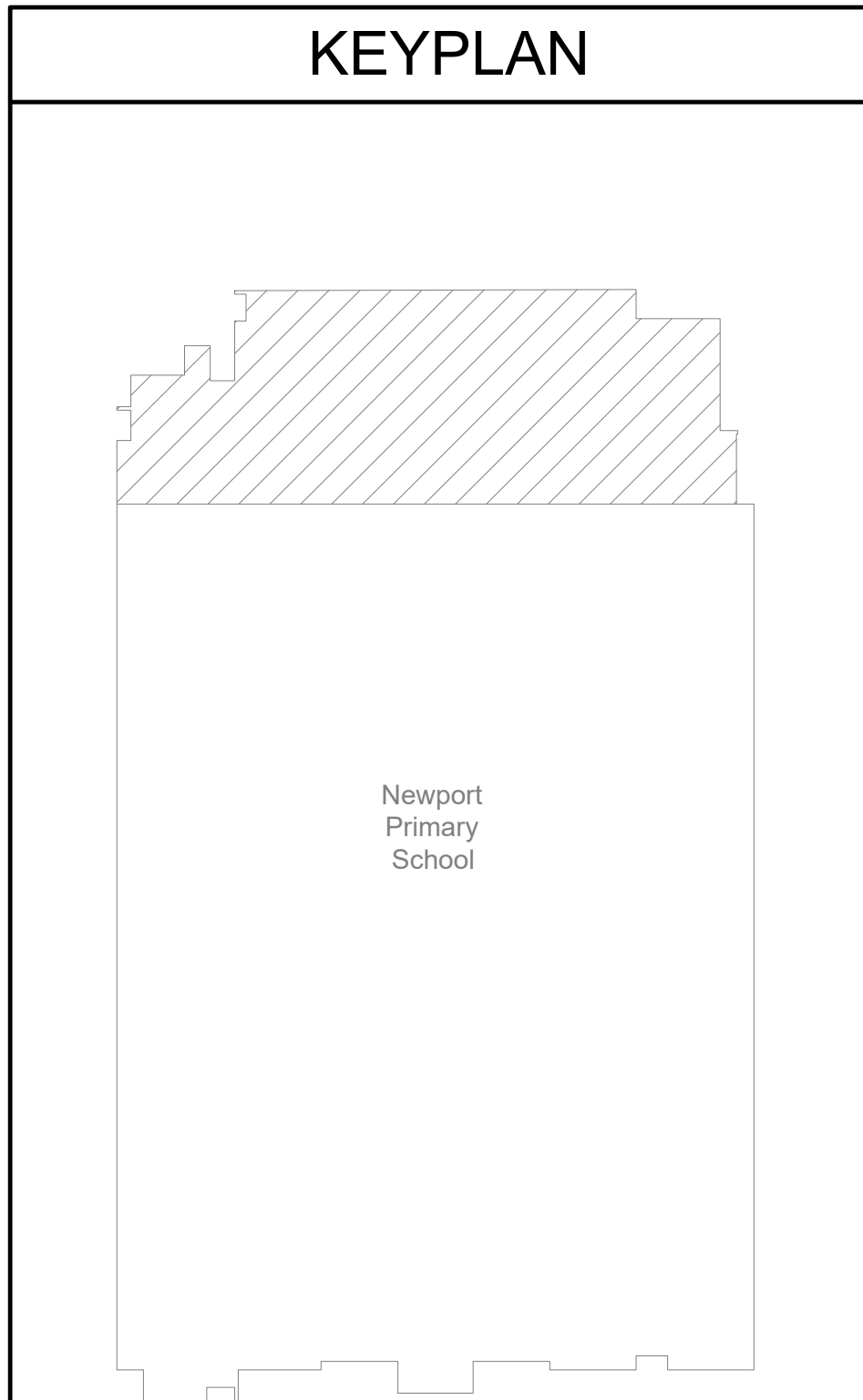
NEW KEYNOTES:

1. PROVIDE 20A/1P CIRCUIT BREAKER IN INDICATED PANEL FOR CONNECTION TO NEW MARQUEE. COORDINATE EXACT LOCATION WITH EQUIPMENT INSTALLER.

2. AS PART OF ALTERNATE, PROVIDE 20A/1P CIRCUIT BREAKER IN INDICATED PANEL AND PHOTOCELL FOR CONNECTION TO BACKLIT LETTERS. COORDINATE EXACT LOCATION AND NUMBER OF POWER SUPPLY CONNECTIONS WITH EQUIPMENT INSTALLER.

3. EXISTING DATA RACK TO REMAIN.

4. PROVIDE DATA CABLE FROM EXISTING DATA RACK TO NEW MARQUEE. ROUTE ABOVE EXISTING CEILING.



**SHROUT
TATE
WILSON**

REGISTERED PROFESSIONAL ELECTRICAL ENGINEERS
Lexington - Louisville
639 North Road Lexington, KY 40505
t: 858.777.8177 www.stweng.com

10/26/21

Newport Primary and Intermediate Schools - Marquees

1102 York Street
Newport, Kentucky 41071

Newport Independent Schools Board of Education

Mr. Tony Watts - Superintendent

SHEET TITLE

**ELECTRICAL
PLANS**

BG #

22-105

REH #

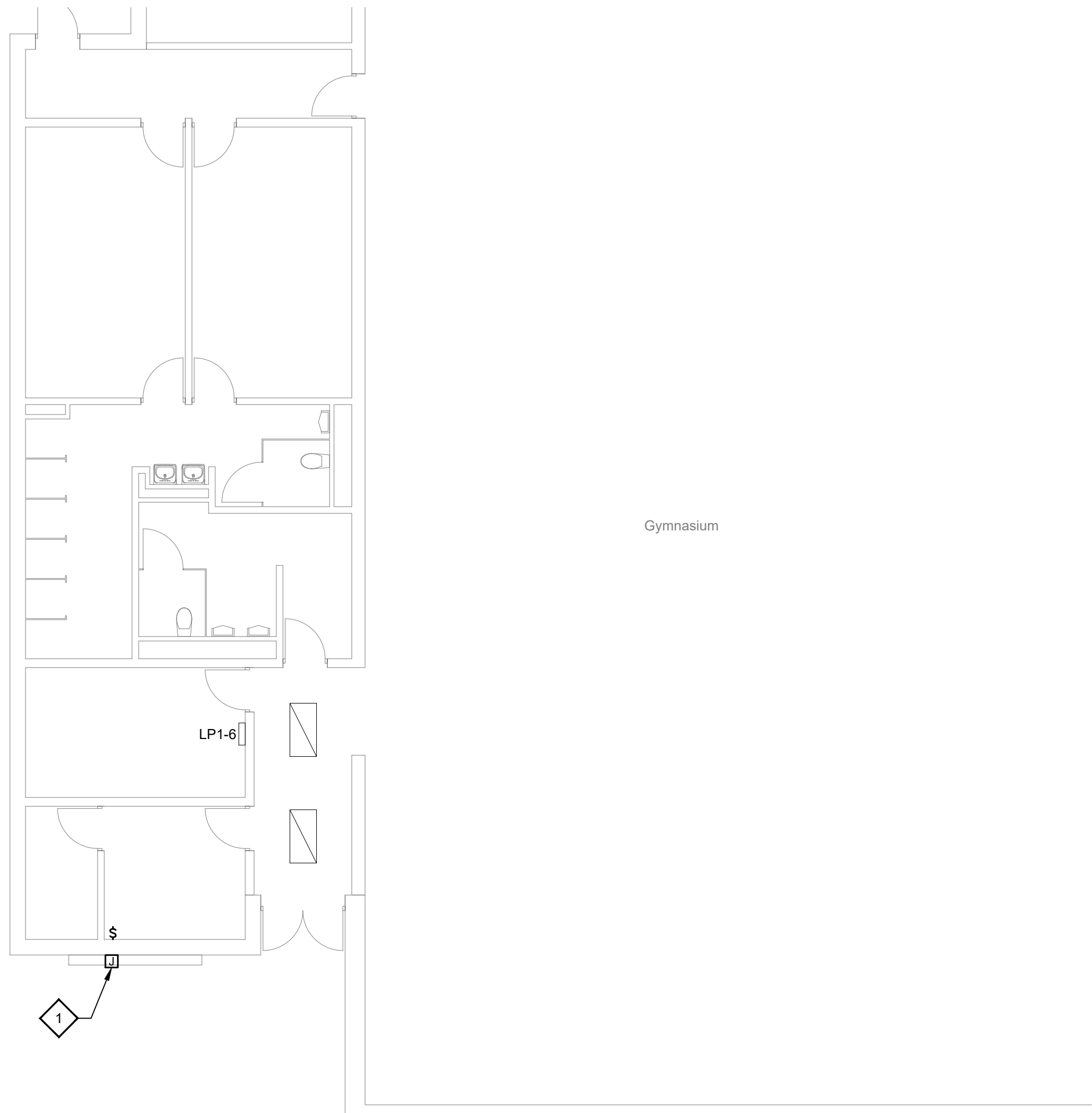
149-821

DATE

10/27/2021

Sheet

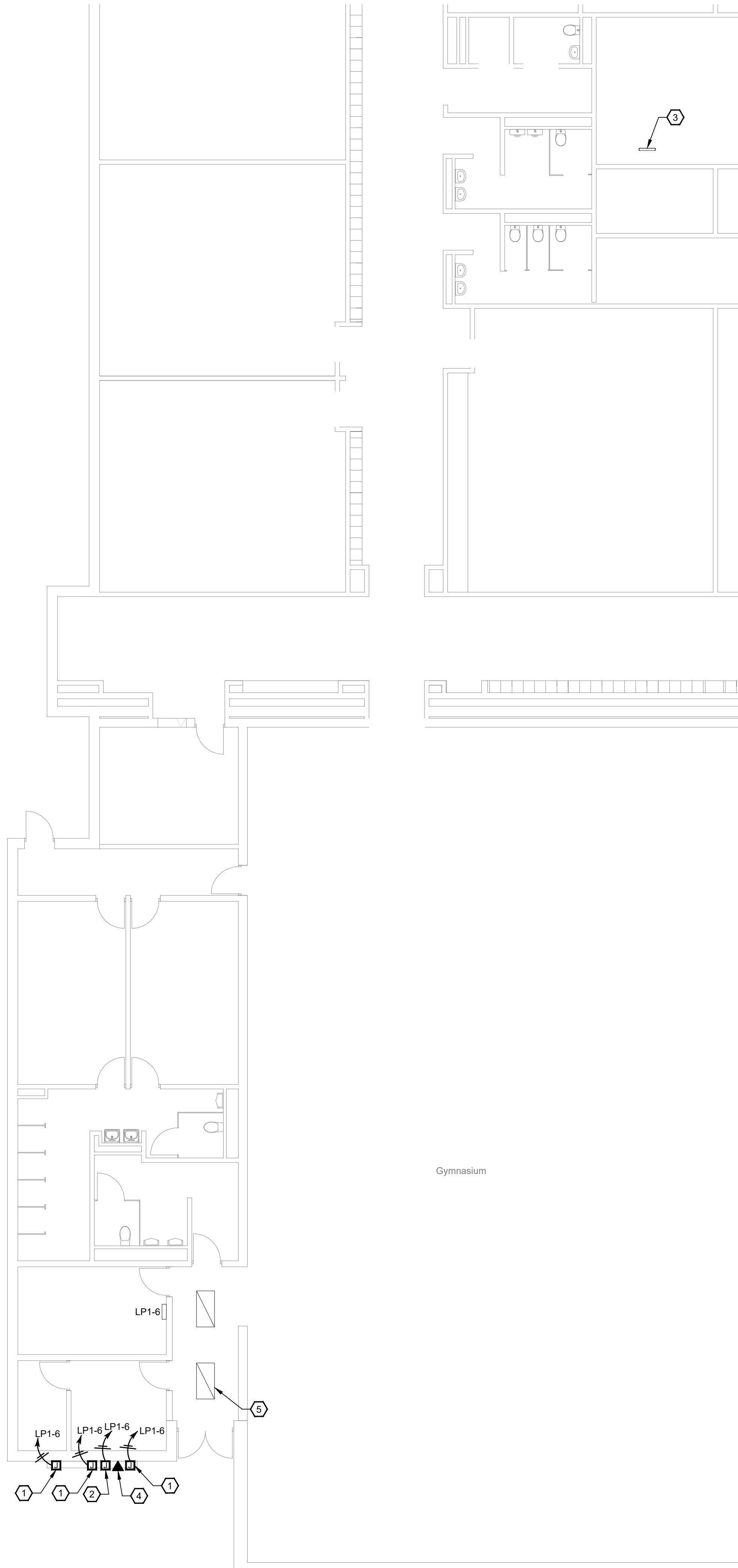
E1.1



1 NEWPORT INTERMEDIATE SCHOOL
ENLARGED FLOOR PLAN - ELECTRICAL DEMOLITION

SCALE: 1/8"=1'-0"

PLAN NORTH



2 NEWPORT INTERMEDIATE SCHOOL
ENLARGED FLOOR PLAN - ELECTRICAL

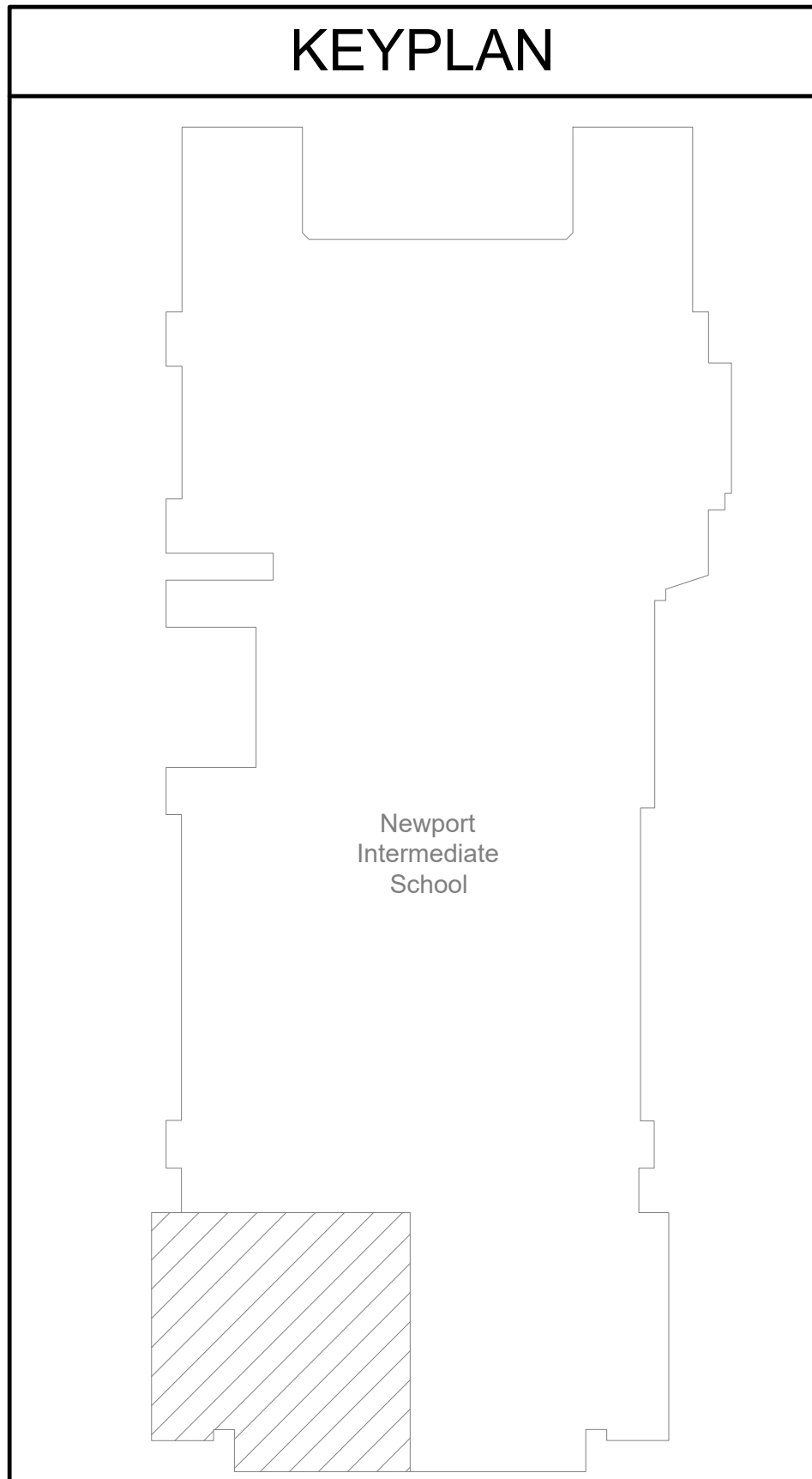
SCALE: 1/8"=1'-0"

PLAN NORTH

- GENERAL NOTES:**
- A. REFER TO SHEET E0.1 FOR GENERAL NOTES.
 - B. ALL PANELS ARE EXISTING TO REMAIN.

- DEMOLITION KEYNOTES:**
- 1. DEMOLISH ELECTRICAL CONNECTION TO EXISTING SIGN.

- NEW KEYNOTES:**
- 1. PROVIDE 20A/1P CIRCUIT BREAKER IN INDICATED PANEL FOR CONNECTION TO NEW MARQUEE. COORDINATE EXACT LOCATION WITH EQUIPMENT INSTALLER.
 - 2. AS PART OF ALTERNATE, PROVIDE 20A/1P CIRCUIT BREAKER IN INDICATED PANEL FOR CONNECTION TO BACKLIT LETTERS. COORDINATE EXACT LOCATION AND NUMBER OF POWER SUPPLY CONNECTIONS WITH EQUIPMENT INSTALLER.
 - 3. EXISTING DATA RACK TO REMAIN.
 - 4. PROVIDE DATA CABLE FROM EXISTING DATA RACK TO NEW MARQUEE. ROUTE ABOVE EXISTING ACCESSIBLE CEILINGS IN CORRIDOR AND IN CONDUIT IN GYMNASIUM.
 - 5. REMOVE EXISTING LIGHT FIXTURE IN GYPSUM BOARD CEILING TO ACCESS AREA ABOVE. INSTALL FLEXIBLE CONDUIT FOR DATA CABLE PATHWAY ABOVE EXISTING GYPSUM CEILING. RECONNECT LIGHT FIXTURE TO OPERATE AS BEFORE.



SHROUT TATE ELECTRICAL ENGINEERS WILSON

Lexington - Louisville
639 West Main Street, Lexington, KY 40505
t: 858.777.8177 www.stew.com

10/26/21

Newport Primary and Intermediate Schools - Marquees

1102 York Street
Newport, Kentucky 41071

Newport Independent Schools Board of Education

Mr. Tony Watts - Superintendent

SHEET TITLE

ELECTRICAL PLANS

BG #

22-105

REH #

149-821

DATE

10/27/2021

Sheet

E1.2