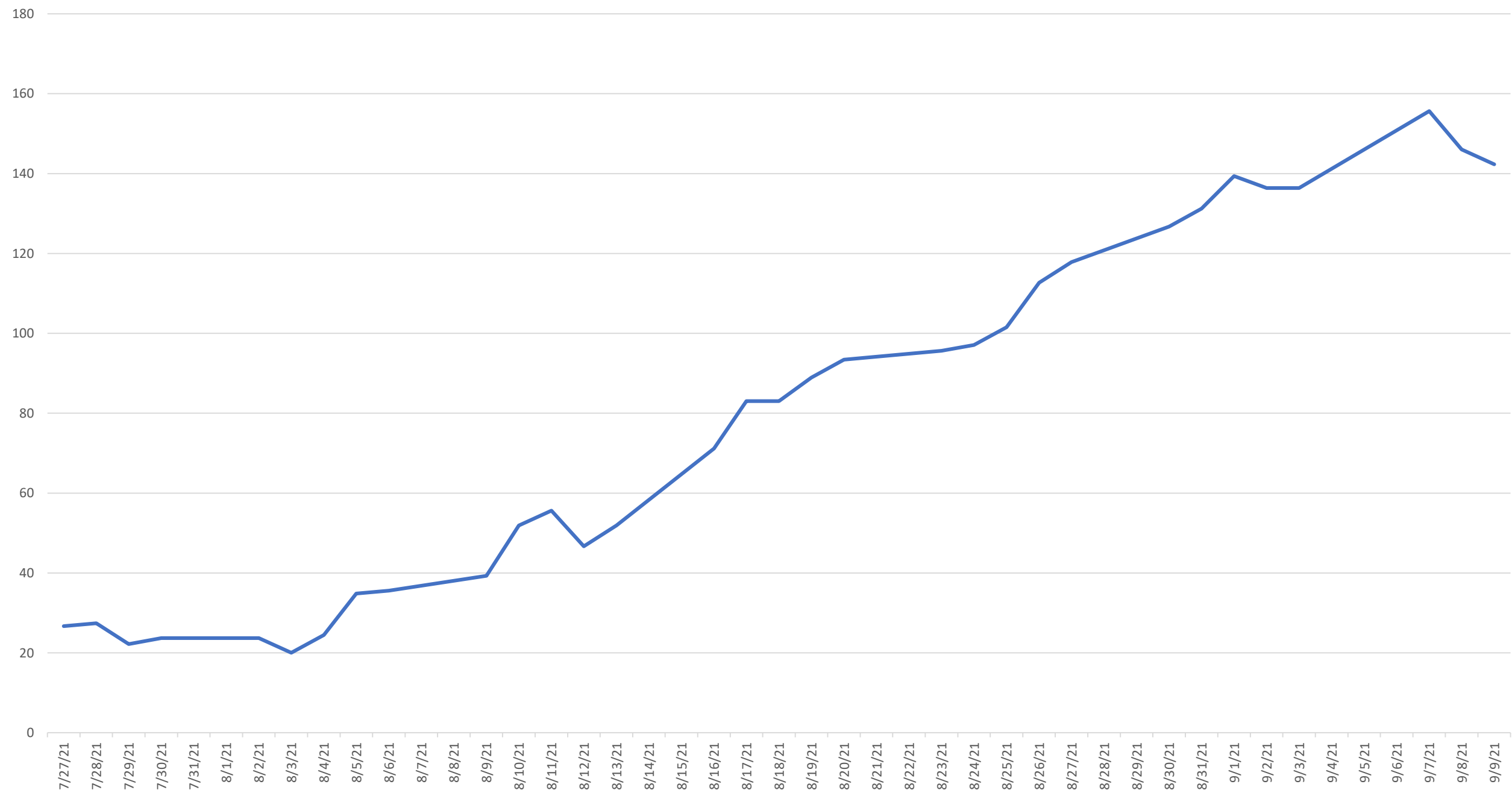


Marion County Incidence Rate 2021-2022



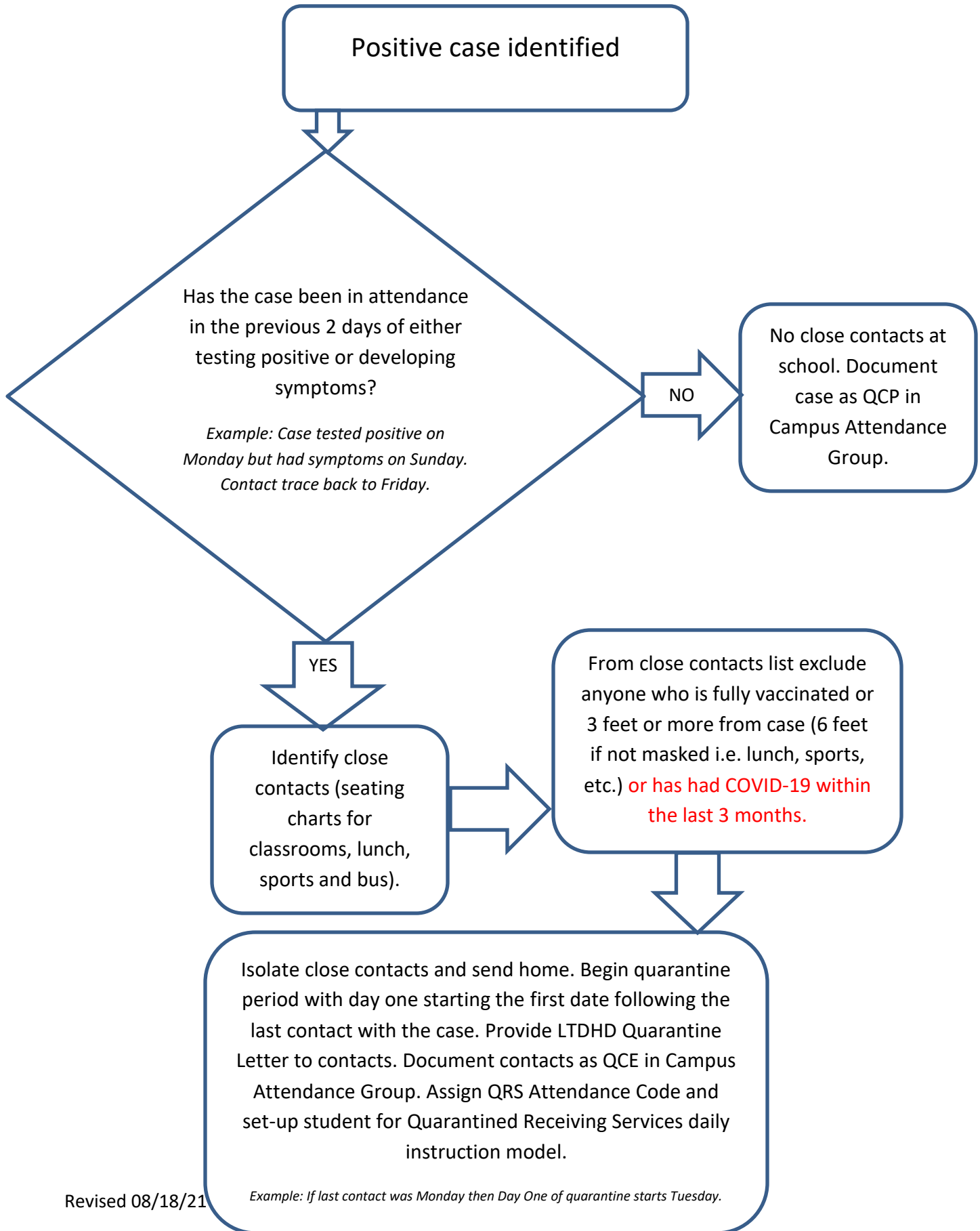
| School Name | Total Enrollment | Current COVID Positive Count | Current COVID Exposure Count | Total Current COVID Impacted | Total Current COVID % Impacted | Report Date |
|-------------------------------|-------------------------|-------------------------------------|-------------------------------------|-------------------------------------|---------------------------------------|--------------------|
| Calvary Elementary School | 233 | 3 | 20 | 23 | 9.87 % | 9/9/2021 |
| Hugh C. Spalding Academy | 146 | 0 | 0 | 0 | 0.00 % | 9/9/2021 |
| Glasscock Elementary School | 470 | 3 | 5 | 8 | 1.70 % | 9/9/2021 |
| Marion County Knight Academy | 498 | 7 | 16 | 23 | 4.62 % | 9/9/2021 |
| Marion County Middle School | 496 | 14 | 36 | 50 | 10.08 % | 9/9/2021 |
| West Marion Elementary School | 432 | 0 | 17 | 17 | 3.94 % | 9/9/2021 |
| Lebanon Elementary School | 339 | 5 | 10 | 15 | 4.42 % | 9/9/2021 |
| Marion County High School | 653 | 18 | 30 | 48 | 7.35 % | 9/9/2021 |
| | 3,267 | 50 | 134 | 184 | 5.63 % | 9/9/2021 |

COVID Number YTD

Quarantine

| Quarantine Postive Cases Reported | Exposed Reported | Duplicate Exposed | Vaccine Eligible |
|--|-----------------------------|------------------------------|-----------------------------|
| 185 | 1089 | 101 | 1600 |

COVID-19 Case Decision Tree



| | |
|--|--|
| Test to Stay --- this is the NEW process so students/staff can stay in school/work | Regular Quarantine --- this is what we have been doing since day 1 of school |
| Day 0 - {LAST DAY OF EXPOSURE TO POSITIVE CASE} No testing --- Allowed to stay at school -- | Day 0- LAST DAY OF EXPOSURE TO POSITIVE CASE |
| Day 1- test- Go to school only if negative | Day 1- home |
| Day 2- test-Go to school only if negative | Day 2 - home |
| Day 3- test-Go to school only if negative | Day 3 - home |
| Day 4- test-Go to school only if negative | Day 4 - home |
| Day 5- test - Go to school only if negative ** (Special Note—If Day 5 falls on the weekend or day that school is not in session, then individual will be tested the next day that school is in session) | Day 5- possible test day (quarantine only requires a test on day 5, 6, or 7)- stay home |
| Day 6-NO TEST- SCHOOL ONLY- not fully released, though, for other activities | Day 6- possible test day (quarantine only requires a test on day 5, 6, or 7)- stay home |
| Day 7 NO TEST- SCHOOL ONLY- not fully released, though, for other activities | Day 7- possible test day (quarantine only requires a test on day 5, 6, or 7)- stay home |
| Day 8- Return to School AND all other HCS activities | Day 8- Return to School AND all other HCS activities |