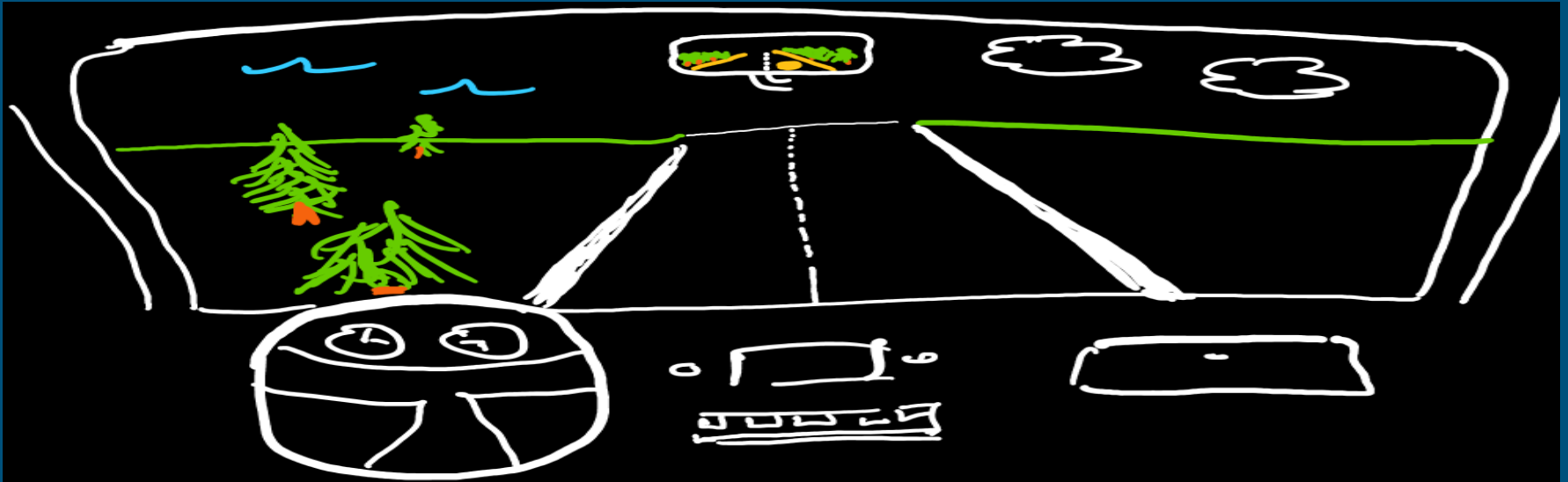




# Community Based Accountability System

KCSD ACTION PLAN 21-  
22

## KCSD Action Plan 21-22



The Rearview & the Windshield  
are two separate systems

# Our Process

---



- We strongly believe the action steps identified, carried out with the spirit of our mission and core beliefs, are what is best for students and staff and will lead us to continued growth and success, meeting our goals, and World Class.
- We hold ourselves responsible for ongoing effective communication, implementation, support, and oversight of this action plan.
- Data and anecdotal information allows us to celebrate growth and success and identify areas to adjust.

# KCSD Webpage

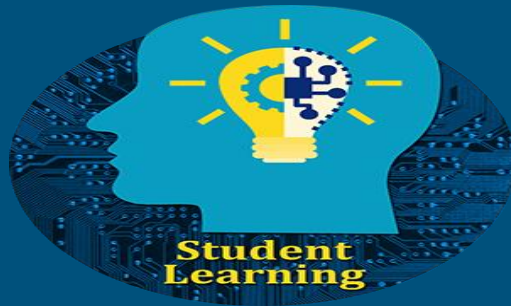
Information about our action plan can be found on our district web page by going to Common Clicks and then Community Based Accountability System (CBAS).



# Pillar 1: Student Learning & Progress

---

**Student Learning and Progress: Ensure academic success for all students so that every student reaches their maximum learning potential.**



## Pillar 2: Student Readiness

---

**Student Readiness: Ensure all students are prepared with the knowledge, skills and dispositions to be transition ready.**



## Pillar 3: Engaged, Well Rounded Students

---

**Engaged, Well-Rounded Students:** Engage students in a way that contributes to their overall development and future well-being.



## — Pillar 4: Community Engagement & Partnerships

**Community Engagement & Partnerships: Ensure all stakeholders in the community have the opportunity to meaningfully engage and support all schools in the KCSD.**





## — Pillar 5: Professional Learning Quality Staff

**Professional Learning/Quality Staff: Ensure that every student has quality teachers and adults that promote the learning and well-being of all students.**





## Pillar 6: Fiscal and Operational Systems

**Fiscal and Operational Systems: Ensure the district is financially responsible/efficient and using its resources to further the district mission.**



## Pillar 7: Safety and Well-Being

**Safety & Well-Being:** Ensure students are educated in an optimal environment that is safe, secure, and conducive to learning. This includes both physical safety as well as the social emotional needs of each student.

