

DATE:
5/15/2021

AGENDA ITEM (ACTION ITEM):

Consider/Approve The KCSD Career Pathway Booklet for the 2021-22 School Year.

APPLICABLE BOARD POLICY:

01.51 – Administrative Procedures

HISTORY/BACKGROUND:

KCSD continues to expand educational opportunities for our scholars PreK-12. One of our primary goals is to ensure each scholar graduates Transition Ready. The Career Education Booklet is a great source for parents, scholars, and the community to understand multiple areas such as; KCSD Portrait of a Graduate, XELLO - Individual Learning Plan (ILP), Science, Technology, Engineering, Arts, and Mathematics (STEAM) Curriculums, Career Pathways, Dual credit, and earning Industry Certifications. KCSD Graduates will have the skills necessary to decide their fields of interest for a successful career and fill the talent pipeline needed in the Northern Kentucky Region..

FISCAL/BUDGETARY IMPACT:

No cost to KCSD

RECOMMENDATION:

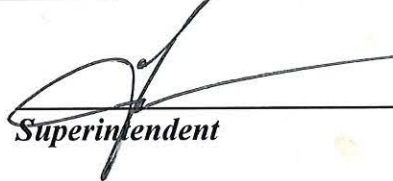
Approval to accept The KCSD Career Pathway Booklet for the 2021-22 School Year.

CONTACT PERSON:

Francis O'Hara, Director of Districtwide Programs and Transition Education


Principal/Administrator


District Administrator


Superintendent

Use this form to submit your request to the Superintendent for items to be added to the Board Meeting Agenda.
Principal –complete, print, sign and send to your Director. Director –if approved, sign and put in the Superintendent's mailbox.



CAREER PATHWAY HANDBOOK

2021-22

KCSD Career Pathway - Table of Contents

Portrait of a Graduate	Page 4
Career Education – Elementary School	Page 5
Career Education – Preparing for Middle School & High School – Individual learning Plan (ILP)	Page 6 - 9
Ignite Institute	Page 8
Course Framework	Page 9
Biomedical Science Pathway	Page 10 - 11
Computer Science Pathway	Page 12 – 13
Design Pathway	Page 14
Education Pathway	Page 15
Engineering Pathway	Page 16
Allied Health Pathway	Page 17 - 18
Aviation Logistics	Page 19
Gateway Community and Technical College	Page 20
Automotive – Diesel Pathway	Page 21
Building Technology Pathway	Page 22
Dixie Heights High School	Page 23
Cincinnati State College – Aviation Mechanics, Avionics, and Drone Pathway	Page 24
State Nursing Testing Assistant Certification	Page 25
Administrative Support Pathway	Page 26
E-Commerce Pathway	Page 27
Management and Entrepreneurship Pathway	Page 28
Animal Science Systems Pathway	Page 29
Horticulture and Plant Science Systems Pathway	Page 30
Pre-Law Studies Pathway	Page 31
Scott High School	Page 32
Cincinnati State College – Aviation Mechanics, Avionics, and Drone Pathway	Page 33
State Nursing Testing Assistant Certification	Page 34 - 35
Crop and Plant Production Pathway	Page 36
Emergency First Responders Pathway	Page 37
Homeland Security Pathway	Page 38
JROTC Pathway (Open to Simon Kenton, Dixie Heights, & Scott H.S.)	Page 39
Law and Criminal Justice Pathway	Page 40
Law Enforcement Pathway	Page 41
Pharmacy Technician Pathway	Page 42
Teacher Education Career Exploration Track	Page 43
Veterinarian Assistant Pathway	Page 44
Simon Kenton High School	Page 45
Cincinnati State College – Aviation Mechanics, Avionics, and Drone Pathway	Page 46
State Nursing Testing Assistant Certification	Page 47
Accounting Pathway	Page 48
Administrative Support Pathway	Page 49
Animal Science Systems Pathway	Page 50
Horticulture and Plant Science Systems Pathway	Page 51
Marketing Pathway	Page 52
Biotechnology Technician Pathway	Page 53

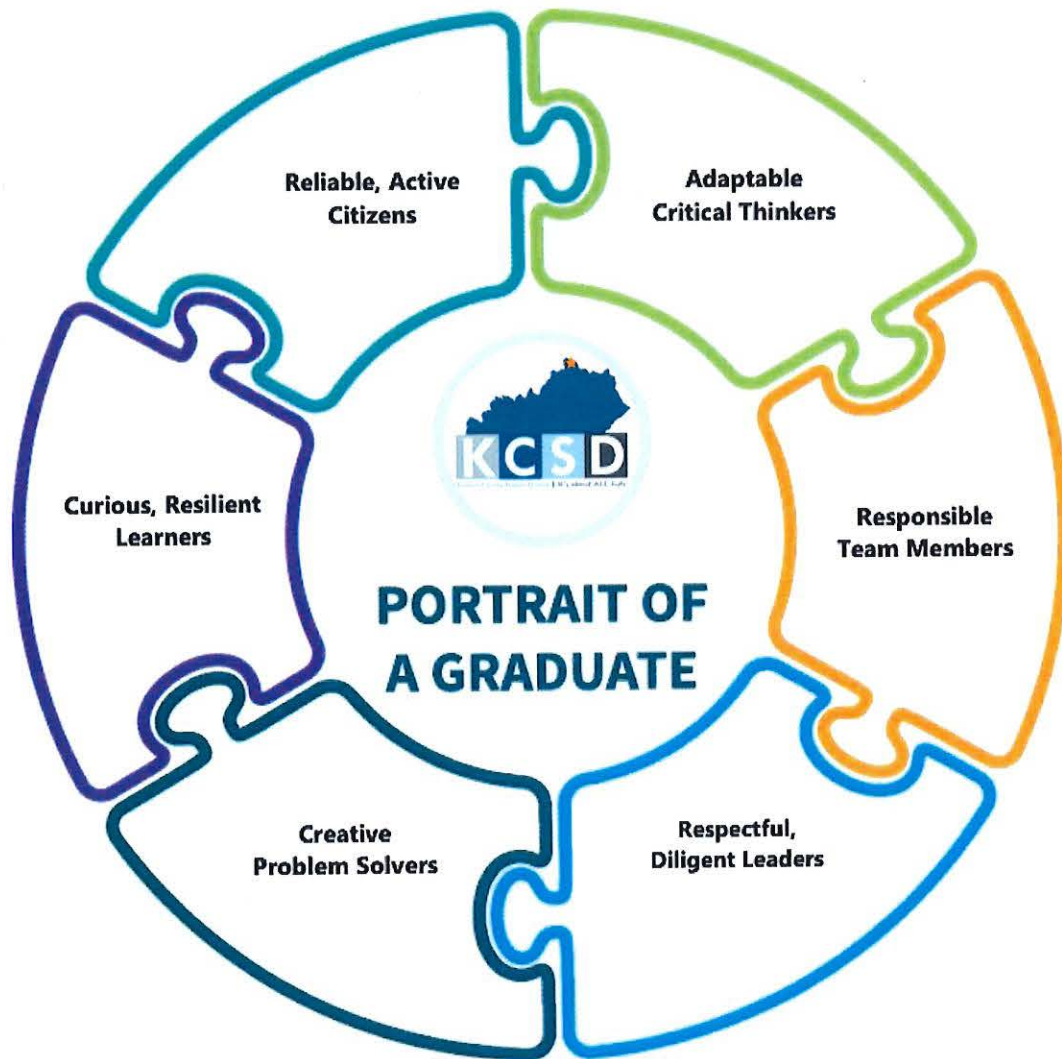
KCSD Career Pathway - Table of Contents

Middle Schools – Career Education	Page 54
Summit View Academy	Page 55
Turkeyfoot	Page 56
Twenhofel	Page 57
Woodland	Page 58
Elementary Schools – Career Education	Page 59
Beechgrove	Page 60
Ft. Wright	Page 61
J.A. Caywood	Page 62
Kenton	Page 63
Piner	Page 64
R.C. Hinsdale	Page 65
River Ridge	Page 66
Ryland Heights	Page 67
Summit View Academy	Page 68 - 69
Taylor Mill	Page 70
Whites Tower	Page 71
Career Information Websites and Links	Page 72

PORTRAIT OF A KCSD GRADUATE

All KCSD scholars in grades K-12 will focus on learning and demonstrating the 6 traits described in the Portrait of a Graduate. KCSD career pathways align to the key elements of the Portrait of a Graduate and offer scholars opportunities inside and beyond the classroom to enhance their development in the 6 traits essential for post-secondary success. More information on KCSD Portrait of a Graduate can be found at:

<https://www.kenton.k12.ky.us/Administration/17>



CAREER EDUCATION ELEMENTARY SCHOOL

As scholars enter into elementary school, they will have exposure to many career education opportunities. All KCSD elementary schools have Project Lead The Way (PLTW) Teachers who teach classes in Science, Technology, Engineering, Arts, and Mathematics (STEAM). The elementary school PLTW Program is called "Launch". These classes also introduce the 5 High Demand Career Sectors:

**Advanced Manufacturing
Business & IT
Construction
Healthcare
Transportation & Logistics**

The elementary school scholars will have experiences that will allow them to learn about careers through:

**Field Trips
Guest Speakers
Career Days
Project Based Learning
STEAM Camps**

As each elementary scholar goes into middle school, they will have the opportunity to continue learning about Career Education through PLTW Middle School STEAM. The Middle School PLTW Program is called "Gateway". All KCSD Middle Schools have PLTW Gateway Teachers.

Once scholars go into high school career education becomes more focused. Scholars may continue PLTW STEAM courses at the Ignite Institute. The High School PLTW STEAM Program is called "Pathways".

Courses at all three KCSD High Schools and the Ignite Institute have Career Education Pathways that provide professional certifications, internships, college dual credit, and also the NKU KCSD Young Scholars Academy where scholars can earn 60 college credits during high school.

Information on career pathways, STEAM, career salaries, and dual credit can be found in the middle and high school section of this booklet.

CAREER EDUCATION

PREPARING FOR MIDDLE SCHOOL AND HIGH SCHOOL

After scholars complete Elementary School, it is the intent of the Kenton County School District to give the scholars greater exposure to the types of careers that exist in the region and state.

The top 5 career sectors for Kentucky are:

Advanced Manufacturing
Business & IT
Construction
Healthcare
Transportation & Logistics

These career fields are the most accessible places for scholars to earn a livable wage

Detailed information about each of the career fields can be found at this website:

[Kentucky Education and Workforce Development Cabinet](#)

KET Education has additional resources relating to each of these career sectors:

[KET Education](#)

Scholars will have the opportunity to learn about these specific career fields as they complete grades 6-12. The importance of exposure will show Kenton County scholars that wide variety of careers that are available to them in the Northern Kentucky Region. It is the intent of this exposure to prepare scholars for careers that will be available and continue to grow in Kentucky. Scholars will complete a general exploration process during middle school that broadens their understanding of regional career fields. As scholars' progress into high school they will pick from a variety of programs and courses that will help them narrow in on their desired postsecondary focus.

EDUCATIONAL EXPERIENCES TO EXPLORE CAREER EDUCATION

Educational experiences inside and outside of the classroom will guide scholars as they develop an understanding-career opportunities available to them which will help scholars narrow their focus to explore careers of interest.

These best practice experiences connected to the 5 high demand job sectors include, but are not limited to:

Field Trips
Guest Speakers
Career Fairs
Career Interest Exploration
Research

CAREER EDUCATION

PREPARING FOR MIDDLE SCHOOL AND HIGH SCHOOL

KCSD wants every scholar to graduate ready for college and work ready. As scholars' transition from elementary school to middle school they will create an **Individual learning Plan (ILP)**. The ILP will allow scholars to build self-knowledge, personalized plans, and critical life skills. The ILP will continue through high school allowing each scholar to be prepared to make decisions for a successful future after graduation. While in middle school scholars will work with teachers and counselors to work on their ILP. Once in high school, the scholars will continue to work with teachers and counselors, in addition, each high school has a College Career Coordinator who will provide assistance with the ILP.

KCSD provides each 6-12 grader a platform to develop their ILP called **XELLO WORLD**. <https://xello.world/en/>

XELLO WORLD – YOUR “INDIVIDUAL LEARNING PLAN”

Straightforward - Understand how scholars are performing in seconds. Xello's easy-to-read dashboards and reports make it ridiculously easy to track a scholar's progress and measure results.

Insightful - Better understand the scholars' motivations. View individual scholar profiles to gain valuable insight into who your scholars are and what they care about for more meaningful conversations.

Actionable - Support scholars when they need it most. With critical alerts, integrated two-way messaging, and the ability to communicate with scholars, Xello helps you ensure every scholar is on-track.

Efficiently Support Every Scholar - Take one thing off of your already very full plate. With Xello you'll deliver personalized learning at scale, save time on administrative tasks, and keep scholar plans organized in a centralized spot.

Meet College and Career Readiness Requirements - Meet your local and federal requirements for college and career readiness with an engaging program that accurately tracks scholar progress and completion rates.

Teach Future-Ready Skills & Knowledge - Help scholars build the 21st century skills to thrive. Xello equips all scholars with the knowledge, real-world skills, and planning capabilities to navigate their future.

Paying for College - Xello's College Planning tools now include a new local scholarships database for you and your scholars, and a college knowledge hub where scholars can find answers to some of the most common questions around paying for college – including FAFSA, Scholarships and more.

Expand Career Options with the Skills Lab - Skills Lab is a new assessment now available for scholars in grades 9 to 12. With the addition of a skills assessment, scholars now have a new lens through which to evaluate career fit, based on the skills they're interested in using most often in their future career. And as your scholars complete the assessment, you'll gain valuable insights into the skills they are most interested in developing and using in the future.



Ignite Institute Colleges

Biomedical Sciences
Computer Science
Design
Education
Engineering
Allied Health
Logistics

Extremely Important Notice:

- Please note that the pathways below are **examples** of what scholars **may** take their freshman-senior year at Ignite. Courses may change based on availability and scholar demand.
- Scholars take courses at Ignite in cohorts. Pathways are designed to meet the needs of all scholars in the cohort.
- Some dual credit courses listed below will be online only depending on staff availability.

Ignite Course Framework

The cohort nature of Ignite programs means most courses are predetermined for scholars.

All Dual-Credit classes listed below are provided through an Ignite college partner and must be paid for by the scholar.

Freshman Year

- English 1
- Social Studies - Government
- Science
 - Integrated Science (Comp. Sci., Design, Education, & Engineering)
 - Biology (Biomedical & Pre-Nursing)
- Career Class 1
- Math
 - Algebra 1, Geometry, or Algebra 2
- Elective (required)
 - Spanish 1 or Spanish 2 (non-Design only)
 - Art 1 (Design only)

Sophomore Year

- English 2
- Social Studies - World Civilization or HIS 101 & 102
- Science
 - Biology (Computer Science, Design, Education, & Engineering)
 - Chemistry (Biomedical & Pre-Nursing)
- Career Class 2
- Math
 - Geometry, Algebra 2, or Precalculus
- Elective (required)
 - Spanish 2 or SPA 101 & 102 (non-Design only)
 - Art 2 (Design only)

Junior Year

- English 3 or ENG 101 & 102
- Social Studies - US History or HIS 108 & 109
- Science
 - Chemistry (Comp. Sci., Design, Education, & Engineering)
 - Integrated Science A + CHE 130 & 135 (Pre-Nursing)
 - Integrated Science A + CHE 170 & 175 (Biomedical Sciences)
- Career Class 3
- Math
 - Algebra 2, Precalculus, or Dual Credit math
- Elective (required)
 - SPA 101 & 102
 - Art 3 (Design only)

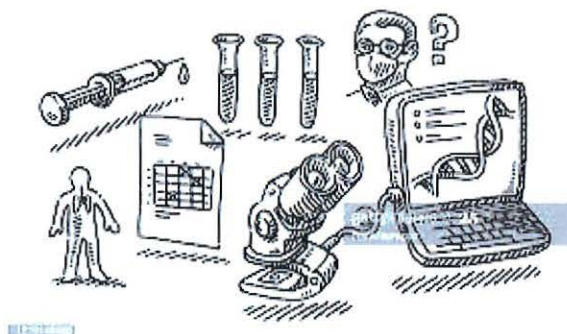
Required Online Courses (offered only through Edgenuity and must be complete before Senior year)

- Health and Physical Education
 - Recommended Freshman Year
- Visual and Performing Arts (Non-design scholars)
 - Recommended Sophomore Year

Senior Year

- Senior Academic Seminar (course designed to prepare seniors for life after high school)
- Academic Internship aligned with their career pathway
- College courses to work towards General Education Certificate or Associate's Degree
- Complete any high school graduation requirements

Biomedical Sciences Pathway



The courses are designed to give scholars the requisite skills to pursue a career in the field of Biomedical Sciences. Scholar work involves the study of human medicine, research processes, and an introduction to bioinformatics. Scholars investigate the human body systems and various health conditions including: heart disease, diabetes, sickle-cell disease, hypercholesterolemia, and infectious diseases. Scholars design innovative solutions for the health challenges of the 21st century.

Biomedical Sciences Career Courses

- 9th - Principles of Biomedical Sciences
- 10th - Human Body Systems
- 11th - Medical Interventions
- 12th - Biomedical Innovations

Career Dual Credit Options (Offered through Gateway):

Medicaid Nurse Aide

Industry Certifications Offered:

- NOCTI Biotechnology
- Medicaid Nurse Aide (Dual Credit course and certification)

Ignite Institute - Biomedical Sciences (High-Demand Sector - Healthcare)

Diploma + Certification

- a. NOCTI Biotechnology – Builds scholar resume to obtain entry-level medical positions. Median salary \$20,000
- b. Medicaid Nurse Aide – Median salary \$28,205
- c. Emergency Medical Technician – Median salary \$34,343
- d. Phlebotomist Certificate – Median salary \$30,828

Associate's in Science Degree

- a. Industry Certification jobs same as above
- b. Gateway has programs/pathways established to transfer to 10 local colleges
 - i. Scholars can choose the degree they want to pursue post-Associate's
 - ii. Scholars can transfer courses to more than just those 10 colleges
- c. Scholars with Associate's in Science can pursue a bachelor's degree and beyond in their choice of major at a university

Future careers and salary depend on choice of certification, undergraduate, and graduate studies

Ex. Medicaid Nurse Aide, EMT, Phlebotomist, Lab Tech, Radiologist, Nurse, Nurse Practitioner, Physician, Surgeon, Anesthesiologist, Physical Therapist, Occupational Therapist, Medical Assistant, Dietitian, Dentist, Dental Assistant, Respiratory Therapist, Sonographer, Paramedic, Athletic Trainer, Nutritionist, Biomedical Scientist, Biomedical Engineer

Career Area College Courses*

NAA 100 – Nursing Assistant Skills I. Provides knowledge and skills for nurse aides to assume the role and responsibility required in a long-term care setting. The focus is communication, infection control, safety, resident/patient rights, and basic nursing skills.

EMS 105 - Emergency Medical Technician. Provides the first level of training in the career structure of Emergency Medical Services. Integrates didactic course material and the lab component necessary for the delivery of entry-level emergency medical care to individuals who are experiencing a disruption in normal body functions due to illness and/or injury and require intervention to prevent morbidity and mortality. Prepares the scholar to sit for the National Registry EMT examination that is required for Kentucky certification as an EMT. Focuses on basic anatomy and physiology, scene and patient assessment, airway and ventilation, cardiovascular and body systems support, motion limiting devices, wound and fracture management, administration of basic patient medications, extrication, transportation, and patient monitoring as well as medico-legal aspects and ambulance operations. Includes a minimum twenty-four (24) hour clinical observation in the emergency department and/or on a state licensed ambulance service.

PHB 100 - Phlebotomy. Prepares the scholar as an integral member of the health-care team to collect blood from patients/donors in hospitals, blood banks or clinics for analysis or other medical purposes. Includes standard precautions, record keeping, and therapeutic communication skills.

PHB 155 – Phlebotomy Clinical. This course is designed to build on the knowledge acquired in phlebotomy lecture and lab. In this course, the scholar will use external institutions for clinical experience to become more proficient in the performance of routine venipuncture and dermal collections. The scholar will gain the experience needed to handle routine venipuncture complications and the skills necessary to adequately perform the duties of a phlebotomist.

Anatomy & Physiology 137 - The interrelationship of structure and function of each body system will be presented in two semesters. The first semester will include basic chemistry, cell structure, cell physiology, metabolism, tissues, and integumentary, skeletal, muscular, and nervous systems.

Medical Microbiology 225 - The characteristics of microorganisms and their relation to health and disease are studied.

*See "General Education College Courses" list for description of all other dual credit.

Computer Science Pathway



These courses will empower students to develop computational thinking skills while building confidence in their technological capabilities. Scholars use Python® as a primary tool, while they explore and become inspired by career paths that utilize computing, discover tools that foster creativity and collaboration, and use what they've learned to tackle challenges like app development and simulation. Scholars collaborate to create original solutions to problems of their own choosing by designing and implementing user interfaces and Web-based databases, as well as creating a game for their friends or an app to serve a real need in their community.

Computer Science Career Courses:

- 9th - Computer Science Essentials
- 10th - Computer Science Principles
- 11th - Computer Science Applications/Cyber Security
- 12th - Computer Science Capstone

Career Dual Credit Options (Offered through Thomas More):

- CIS 113 Computer Applications and Hardware
- CIS 114 Introduction to Programming I with Lab
- CIS 115 Introduction to Programming II with Lab
- CIS 231 Foundations of Networking
- CIS 267 Database 1

Industry Certifications Offered:

- Certiport Digital Literacy IC3
- Microsoft Technology Associate

Ignite Institute - Computer Science (High-Demand Sector – Business and IT)

Diploma + Certification

- a. Certiport Digital Literacy IC3 – Median salary \$31,000
- b. Microsoft Technology Associate – Median salary \$45,000
- c. A+ Prep – Median salary \$50,000
- d. Net+ – Median salary \$55,000
- e. Security+ Prep – Median salary \$55,000

Associate's in Arts Degree

- a. Industry Certification jobs same as above
- b. Gateway has programs/pathways established to transfer to 10 local colleges
 - i. Scholars can choose the degree they want to pursue post-Associate's
 - ii. Scholars can transfer courses to more than just those 10 colleges
- c. Scholars with Associate's in Arts can pursue a bachelor's degree and beyond in their choice of major at a university

Future careers and salary depend on choice of certification, undergraduate, and graduate studies

Ex. Software Developer, Software Test Engineer (STE), Senior Software Engineer, Software Development Manager, Software Architect, Programmer Analyst, Systems Developer, Web Developer, Application Support Analyst, Computer Systems Analyst, Database Administrator, Systems Administrator, Systems Engineer, Network Administrator, Network Engineer, Business Analyst, Program Manager, Information Technology Specialist

Career Area College Courses*

INF 120 – Elementary Programming. An elementary introduction to programming for those with no previous programming experience. Emphasis on understanding how to read and write basic procedural programs, and on understanding the concepts of algorithm and execution.

INF 260 – Object Oriented Programming. Elementary object-oriented programming concepts and practice: types, decisions, loops, methods, arrays, classes; design and problem-solving. An intensive introduction intended for scholars with programming experience.

INF 286 – Introduction to Web Development. An introduction to web design and development for majors in the informatics fields. Web page creation and HTML; site organization and best practices; e-business planning, models and strategies; overview of SML and CSS; introduction to client-side and server-side programming.

CIT 111 – Computer Hardware and Software. Presents a practical view of computer hardware and client operating systems. Covers computer hardware components; troubleshooting, repair, and maintenance; operating system interfaces and management tools; networking components; computer security; and operational procedures

CIT 160 – Intro to Networking Concepts. Introduces technical level concepts of non-vendor specific networking including technologies, media, topologies, devices, management tools, and security. Provides the basics of how to manage, maintain, troubleshoot, install, operate, and configure basic network infrastructure.

CIT 180 – Security Fundamentals. Introduces basic computer and network security concepts and methodologies. Covers principles of security; compliance and operational security; threats and vulnerabilities; network security; application, data, and host security; access control and identity management; and cryptography. Helps to prepare scholars for the COMPTIA Security+ examination.

*See "General Education College Courses" list for description of all other dual credit.

Design Pathway



The College of Design is an industry certification program that consists of six different courses—Introduction to Visual Communications, Introduction to Media Arts, 2-D Design, Moving Image Animation, Interactive Design, Advanced Production. Courses expose scholars to the multimedia materials, processes, professional habits, and technical skills required for employment in the Design industry. Scholars will explore design software, art media, professional relationships, studio operations, cross-curricular connections, and more! They will create a portfolio of work which demonstrates inquiry through art and design, as well as the development of materials, processes, and ideas over the course of a year. Portfolios include design projects, process documentation, and written information about the work presented.

Design Career Courses:

- 9th - Introduction to Media Arts
- 10th - Moving Image Animation
- 11th - Interactive Design
- 12th - Virtual Design

Industry Certifications Offered:

Adobe Certified Associate: Photoshop, Flash, & Illustrator

Ignite Institute - Design (High-Demand Sector – Business and IT)

Diploma + Certification

- a. Adobe Certified Associate: Photoshop, Flash, Illustrator – Median salary \$38,000
- b. Autodesk 3ds Max – Median salary \$50,000
- c. Autodesk Maya – Median salary \$45,000

Associate's in Arts Degree

- a. Industry Certification jobs same as above
- b. Gateway has programs/pathways established to transfer to 10 local colleges
 - i. Scholars can choose the degree they want to pursue post-Associate's
 - ii. Scholars can transfer courses to more than just those 10 colleges
- c. Scholars could take ACA training and become Adobe Certified Expert with a median salary of \$70,000
- d. Scholars with Associate's in Arts can pursue a bachelor's degree and beyond in their choice of major at a university

Future careers and salary depend on choice of certification, undergraduate, and graduate studies

Ex. Multimedia Specialist, Graphic Designer, Graphic Artist, Editor, Motion Graphic Designer, Design Specialist, Marketing Coordinator, Content Specialist, Web Specialist, Video Specialist, Technical Communications Specialist, Application Specialist, Social Media Manager, Art Director

See "General Education College Courses" list for description of all other dual credit.

Education Pathway



The Education Pathway is designed to immerse scholars in the field of education by exploring careers in counseling, teaching, administration, and other support roles in the school system. Scholars will engage in activities designed to uncover their abilities and interests in becoming an educational professional. The courses help scholars understand how today's scholars learn. Topics include, but are not limited to: child psychology, lifespan and developmental psychology, multiple intelligences, and Bloom's Taxonomy. The courses also explore teaching techniques and strategies as they apply to 21st century inquiry-based learning.

Education Career Courses

- 9th - Education Basics
- 10th - Students Today
- 11th - The Art of Teaching
- 12th - Collaborative Clinical Experience

Dual Credit Options (Offered Through NKU College of Education):

- EDU 104 Orientation to Education
- EDU 294 Special Topics in Education
- EDU 300 Human Growth and Development
- EDU 305 Introduction to Education
- EDU 316 Racism and Sexism in Education

Industry Certifications Offered: Praxis CORE

Ignite Institute - Education

Diploma + Certification

- a. Kentucky Paraeducator Assessment – Median salary \$20,000
- b. Educator's Rising Microcredentials – Builds scholar resume to obtain entry-level education positions. Median salary \$20,000
- c. PRAXIS Core – Entrance into College of Education

Associate's in Arts Degree

- a. Industry Certification jobs same as above
- b. Gateway has programs/pathways established to transfer to 10 local colleges
 - i. Scholars can choose the degree they want to pursue post-Associate's
 - ii. Scholars can transfer courses to more than just those 10 colleges
- c. Scholars with Associate's in Arts can pursue a bachelor's degree and beyond in their choice of major at a university

Future careers and salary depend on choice of certification, undergraduate, and graduate studies

Ex. Paraeducator, Teacher, Counselor, Principal, Superintendent, Curriculum Developer, Instructional Coach, Human Resources, Coach

Career Area College Courses*

EDU 104 – Education Profession Orientation. Designed to explore the education profession and programs of the Teacher Education Department; Teacher Education Handbook; KY New Teacher Standards; various teacher areas; and includes a field experience component.

EDU 305 – Introduction to Education. Examination of teaching as a profession and of schooling as it currently functions in the U.S.; inquiry into contemporary educational theory and practice to assist scholars in making realistic career decisions.

EDU 300 – Human Growth & Development. Life-span human development; physical, cognitive, social, and personal development especially as these relate to children in school and to the adults who influence them; individual study focusing on scholar development at specific levels of instruction.

EDU 316 – Racism & Sexism in Educational Institutions. Introduction to the role of educational institutions in perpetuating racism and sexism in the U.S.; theories of prejudice, assimilation, feminism, and cultural reproduction explain patterns of social, cultural, political, psychological, and economic exclusion.

*See "General Education College Courses" list for description of all other dual credit.

Engineering Pathway



The courses teach problem-solving skills by engaging scholars in the engineering process. Models of product solutions are created, analyzed, and communicated in a variety of ways including the use of solid modeling computer design software. In addition, scholars use 3D design software to design and document solutions for major course projects. Exploring various technology systems and manufacturing processes help scholars learn how engineers and technicians use an engineering problem solving process to benefit society.

Engineering Career Courses

- 9th - Introduction to Engineering Design
- 10th - Principles of Engineering
- 11th - Computer Integrated Manufacturing
- 12th - Engineering Design and Development

Industry Certifications Offered:

Autodesk Inventor Certified User

Ignite Institute - Engineering (High-Demand Sector – Advanced Manufacturing, Construction)

Diploma + Certification

- a. Autodesk Inventor Certified User – Median salary \$40,000
- b. Autodesk AutoCAD Certified User – Median salary \$44,000
- c. Fundamentals of Mechatronics Certificate – Median salary \$48,000

Associate's Degree in Science

- a. Industry Certification jobs same as above
- b. Gateway has programs/pathways established to transfer to 10 local colleges
 - i. Scholars can choose the degree they want to pursue post-Associate's
 - ii. Scholars can transfer courses to more than just those 10 colleges
- c. Scholars could take further AutoDesk training and become Autodesk Professionals with a median salary of \$55,000
- d. Scholars with Associate's in Science can pursue a Bachelor's degree and beyond in their choice of major at a university

Future careers and salary depend on choice of certification, undergraduate, and graduate studies

Ex. Aerospace Engineer, Agricultural Engineer, Automotive Engineer, Biomedical Engineer, Chemical Engineer, Civil Engineer, Computer Engineer, Electrical Engineer, Environmental Engineer, Geological Engineer, Marine Engineer, Mechanical Engineer, Software Engineer

Career Area College Courses*

Physics 231/241 – General Physics I w/ Lab. Focuses on the mechanics of matter as governed by Newton's Laws and by the conservation laws of energy, linear momentum, and angular momentum using calculus and trigonometry.

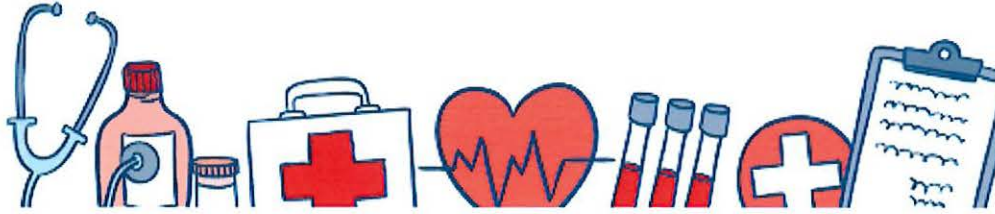
Physics 232/242 – General Physics II w/ Lab. Focuses on electromagnetic phenomena, circuits, and optics using vector calculus.

ELT 110 – Circuits I. Introduces application of basic DC and AC circuits, including circuit analysis techniques with discussion of introductory magnetism and transformer principles. Emphasizes design, construction, and troubleshooting of simple DC and AC circuits in laboratory exercises.

MFG 135 – Fundamentals of Mechatronics. Introduces the scholar to the basics of Mechatronic systems and the operation of electrical, mechanical, pneumatic/hydraulic, and Programmable Logic Control components in an advanced manufacturing system. Combines basic operational and analytical skills with critical thinking and applied troubleshooting. Teaches the scholars to troubleshoot a multitude of problems involved in typical electrical, mechanical, and hydraulic/ pneumatic systems.

*See "General Education College Courses" list for description of all other dual credit.

Allied Health Pathway



This pathway prepares individuals for admission to a professional program in nursing. This pathway focuses on caring for residents in a long-term care facility. It is designed to promote an understanding of standard precautions necessary for personal and professional health maintenance and infection control. By relating terms to body systems, students identify proper use of words in a medical environment. Knowledge of medical terminology enhances the student's ability to successfully secure employment or pursue advanced education in health care.

Allied Health Career Courses

- 9th - Principles of Health Science
- 10th - Emergency Procedures & Medical Terminology
- 11th - Medicaid Nurse Aide (Dual Credit)
- 12th - Allied Health Internship

Industry Certifications offered:

Medicaid Nurse Aide (MNA)

Ignite Institute - Pre-Nursing (High-Demand Sector - Healthcare)

Diploma + Certification

- a. NOCTI Biotechnology – Builds scholar resume to obtain entry-level medical positions. Median salary \$20,000
- b. Medicaid Nurse Aide – Median salary \$28,205
- c. Emergency Medical Technician – Median salary \$34,343
- d. Phlebotomist Certificate – Median salary \$30,828

Associate's Degree in Science

- a. Industry Certification jobs same as above
- b. Gateway has programs/pathways established to transfer to 10 local colleges
 - i. Scholars can choose the degree they want to pursue post-Associate's
 - ii. Scholars can transfer courses to more than just those 10 colleges
- c. Scholars with Associate's in Science can pursue a Bachelor's degree and beyond in their choice of major at a university

Future careers and salary depend on choice of certification, undergraduate, and graduate studies

Ex. Medicaid Nurse Aide, EMT, Phlebotomist, Lab Tech, Radiologist, Nurse, Nurse Practitioner, Physician, Surgeon, Anesthesiologist, Physical Therapist, Occupational Therapist, Medical Assistant, Dietitian, Dentist, Dental Assistant, Respiratory Therapist, Sonographer, Paramedic, Athletic Trainer, Nutritionist, Biomedical Scientist, Biomedical Engineer

Career Area College Courses*

NAA 100 – Nursing Assistant Skills I. Provides knowledge and skills for nurse aides to assume the role and responsibility required in a long-term care setting. The focus is communication, infection control, safety, resident/patient rights, and basic nursing skills.

EMS 105 - Emergency Medical Technician. Provides the first level of training in the career structure of Emergency Medical Services. Integrates didactic course material and the lab component necessary for the delivery of entry-level emergency medical care to individuals who are experiencing a disruption in normal body functions due to illness and/or injury and require intervention to prevent morbidity and mortality. Prepares the scholar to sit for the National Registry EMT examination that is required for Kentucky certification as an EMT. Focuses on basic anatomy and physiology, scene and patient assessment, airway and ventilation, cardiovascular and body systems support, motion limiting devices, wound and fracture management, administration of basic patient medications, extrication, transportation, and patient monitoring as well as medico-legal aspects and ambulance operations. Includes a minimum twenty-four (24) hour clinical observation in the emergency department and/or on a state licensed ambulance service.

PHB 100 - Phlebotomy. Prepares the scholar as an integral member of the health-care team to collect blood from patients/donors in hospitals, blood banks or clinics for analysis or other medical purposes. Includes standard precautions, record keeping, and therapeutic communication skills.

PHB 155 – Phlebotomy Clinical. This course is designed to build on the knowledge acquired in phlebotomy lecture and lab. In this course the scholar will use external institutions for clinical experience to become more proficient in the performance of routine venipuncture and dermal collections. The scholar will gain the experience needed to handle routine venipuncture complications and the skills necessary to adequately perform the duties of a phlebotomist.

Anatomy & Physiology 137/139 - The interrelationship of structure and function of each body system will be presented in two semesters. The first semester will include basic chemistry, cell structure, cell physiology, metabolism, tissues, and integumentary, skeletal, muscular, and nervous systems.

Medical Microbiology 225 - The characteristics of microorganisms and their relation to health and disease are studied.

*See "General Education College Courses" list for description of all other dual credit.

Aviation Logistics Pathway (Juniors/Seniors only)



The Ignite Institute is offering a half-day Aviation Logistics program for scholars who are interested in a career at our own Northern Kentucky/Cincinnati Airport. Scholars attending this program will take Math, English, and Logistics courses at the Ignite Institute their **junior and senior** year in high school, ending with an internship at the airport the second semester of their senior year.

Scholars in the Aviation Logistics program at Ignite will remain at their home high school half a day and will be transported to Ignite for the second half. Logistics scholars will complete the following 4 courses during their junior and senior years:

Introduction to Logistics (First Semester, Junior Year)

This course is designed to introduce scholars to the field of logistics and air transport. Scholars will learn about flight operations, system operations, aircraft maintenance, as well as the history of major CVG airport employers such as Atlas Air, DHL, Southern Air, Polar, and many more.

Concepts in Logistics (Second Semester, Junior Year)

This course teaches scholars the principles of business management, global geography, and cultural aspects of working in a field that operates with the rest of the world.

Advanced Logistics (First Semester, Senior Year)

This course allows scholars to really dive deep into high paying careers at CVG. In addition, scholars in this course will learn the basics of airport logistics such as airport codes, parts of our airport, and how the airport impacts the economics, politics, and social happenings in our region. Scholars choose their internship at the end of this course based on their interest areas.

Logistics Capstone (Second Semester, Senior Year)

This course is on-the-job training. Scholars map out their career at the airport and begin building their future career. Logistics Capstone scholars will also complete airport training required to advance in the field.

*Scholars who wish to join the program their senior year will begin with Advanced Logistics.



CAREER PATHWAYS
GATEWAY COMMUNITY & TECHNICAL COLLEGE

Automotive – Diesel
Building Technology

Automotive – Diesel – Collision Repair Technology at Gateway Community and Technical College For Simon Kenton High School, Scott High School, and Dixie Heights High School

This pathway prepares individuals to apply technical knowledge and skills in Automotive, Diesel, and Collision Repair leading to Automotive Service Excellence (ASE) Certifications.

Projected Freshman-Junior Schedule Denotes Dual-Credit Course OR AP Course

Grade	Track	Career Pathway Elective	English	Math	Science	Social Studies	Other Classes
9th	Traditional		English 1	Algebra 1	Integrated Science	Integrated Social Studies	PE/Health
	Accelerated		Accelerated English 1 or Honors English 1	Accelerated Geometry or Accelerated Algebra 2	Accelerated Integrated Science	AP Government	PE/Health
10th	Traditional		English 2	Geometry	Biology	World Civilizations	Humanities or Art Elective
	Accelerated		Accelerated English 2 or Honors English 2	Accelerated Algebra 2 or Accelerated Pre-Calculus	Accelerated Biology	AP European History	Humanities or Art Elective
11th	Traditional	Fall: ADX 120/121 Basic Automotive Electricity with Lab Spring: ADX 260/261 Electrical Systems with Lab	English 3	Algebra 2	Concepts of Science		
	Accelerated	Fall: ADX 120/121 Basic Automotive Electricity with Lab Spring: ADX 260/261 Electrical Systems with Lab	Accelerated English 3 or AP LANG & Comp	Accelerated Pre-Calculus	Chemistry		
12th	Traditional	Fall: ADX 150/151 Engine Repair with Lab Spring: ADX 170/171 Climate Control with Lab	English 4 or ENG 100 & 120	CCR Math		US History	
	Accelerated	Fall: ADX 150/151 Engine Repair with Lab Spring: ADX 170/171 Climate Control with Lab	Accelerated English 4 or AP Lit & Lang or ENG 100 & 120	AP Calculus AB or Dual Credit Math		AP US History	

Industry Certifications offered: Automotive – Diesel – Collision Repair Technology complete the Automotive Service Excellence (ASE) Scholar Certification "Automotive Maintenance and Light Repair (MLR)

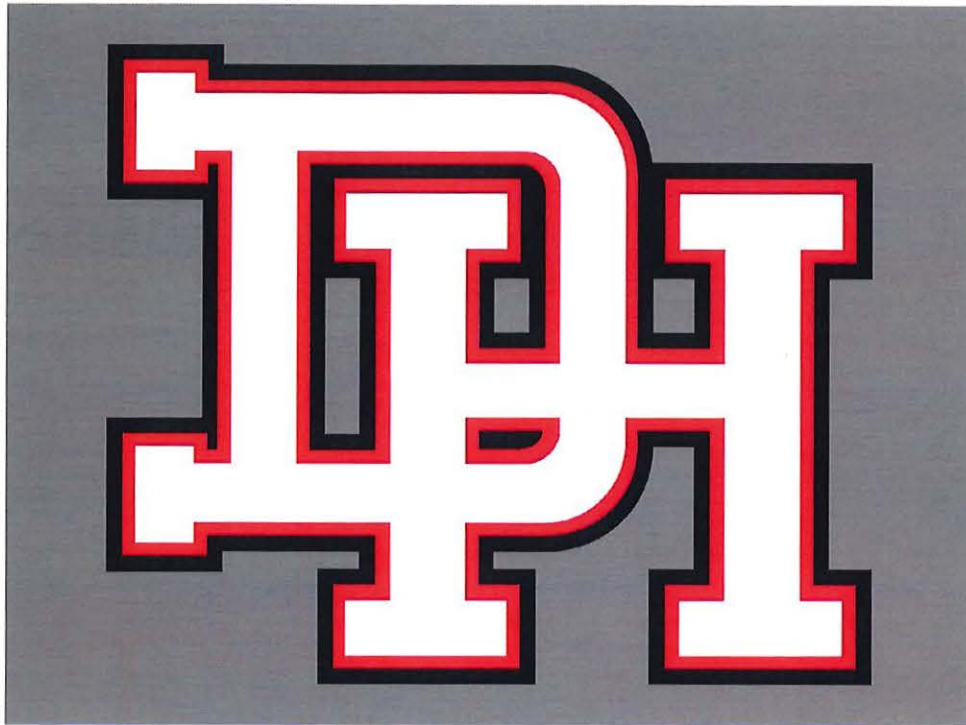
Building Technology at Gateway Community and Technical College
For Simon Kenton High School, Scott High School, and Dixie Heights High School

This pathway prepares individuals to apply technical knowledge and skills in residential and structural building. Including instruction in technical mathematics, blueprint reading, construction techniques, air conditioning, heating, plumbing, electrical, and applicable standards.

Projected Freshman-Junior Schedule
 Denotes Dual-Credit Course OR AP Course

Grade	Track	Career Pathway Elective	English	Math	Science	Social Studies	Other Classes
9th	Traditional		English 1	Algebra 1	Integrated Science	Integrated Social Studies	PE/Health
	Accelerated		Accelerated English 1 or Honors English 1	Accelerated Geometry or Accelerated Algebra 2	Accelerated Integrated Science	AP Government	PE/Health
10th	Traditional		English 2	Geometry	Biology	World Civilizations	Humanities or Art Elective
	Accelerated		Accelerated English 2 or Honors English 2	Accelerated Algebra 2 or Accelerated Pre-Calculus	Accelerated Biology	AP European History	Humanities or Art Elective
11th	Traditional	Fall: GCTC ISX 1001 & GCTC EET 154/155 Spring: GCTC CIT 105 & GCTC ACR 100/101	English 3	Algebra 2	Concepts of Science		
	Accelerated	Fall: GCTC ISX 1001 & GCTC EET 154/155 Spring: GCTC CIT 105 & GCTC ACR 100/101	Accelerated English 3 or AP LANG & Comp	Accelerated Pre-Calculus	Chemistry		
12th	Traditional	Fall: GCTC PLB 100 & GCTC DUAL CREDIT Spring: GCTC CAR 126/127	English 4 or ENG 100 & 120	CCR Math		US History	
	Accelerated	Fall: GCTC PLB 100 & GCTC DUAL CREDIT Spring: GCTC CAR 126/127	Accelerated English 4 or AP Lit & Lang or ENG 100 & 120	AP Calculus AB or Dual Credit Math		AP US History	

Industry Certifications offered: Building Technology has Three Exams Required: OSHA 10, National Center for Construction Education Research (NCCER) – Core Curriculum and one of the following NCCER Level 1: Construction Carpentry, Electrical Technician, HVAC, and/or Plumbing



CAREER PATHWAYS

**AVIATION MECHANICS
& DRONE CERTIFICATION**



**NEW STARTING
2021-22
SCHOOL YEAR!**

STATE TESTING NURSING ASSISTANT
ADMINISTRATIVE SUPPORT
E-COMMERCE
MANAGEMENT AND ENTREPRENEURSHIP
ANIMAL SCIENCE
HORTICULTURE AND PLANT SCIENCE SYSTEMS
PRE-LAW STUDIES

Cincinnati State College in a Partnership with Kenton County Schools

Aircraft Mechanic, Avionics & Drone Pathway (Juniors and Seniors)



Fall 2021	Unmanned Aerial Systems Aircraft Orientation	AMT250 AMT105
Spring 2022	Aviation Standard Practices	AMT100
Fall 2022	Avionics 1 Aircraft Weight and Balance	AMT271 AMT115
Spring 2023	Avionics 2 Aviation Math	AMT272 MAT122
Spring 2023	OPTION (If student already has CCP Math Credit) Aircraft Welding Processes AMT130 Aircraft Non-Metal Structures AMT120	

Three Certifications: UAS Certificate and eligibility to test for FAA Remote Pilot Certificate for Drone
Avionics Certificate and eligibility to test for NCATT Aircraft Electrician Certificate (AET).
AMT General Certificate of Completion for FAA General Airmen Knowledge Test (written test only)

NKY thrives

FEAM Aero sets up new hangar at CVG expected to generate 100 aircraft mechanic jobs

SOAPBOX STAFF | THURSDAY, JANUARY 23, 2020 |

FEAM Aero, which began operations at CVG in July 2015, employs approximately 200 technicians who provide services for DHL, Amazon, and passenger aircraft.

Their latest hangar: \$19 million facility spread out over 103,000 feet is expected to generate **100 aircraft mechanic jobs** and will focus on maintenance, repair, and overhaul work for **747 aircraft**.

According to FEAM managing director Cam Murphy, "As aviation and aircraft maintenance services continue to be in high demand, we're grateful to CVG Airport for understanding the need for our services, and for allowing this hangar to be part of the economic and innovative growth of the airport and state."

Aircraft Mechanic Salary

The average Aircraft Mechanic salary in the United States is **\$73,436** as of February 26, 2020. The range for our most popular Aircraft Mechanic positions typically falls between \$34,759 and \$112,112. Keep in mind that salary ranges can vary widely depending on many important factors; including position, education, certifications, additional skills, and the number of years you have spent in your profession.

STATE TESTED NURSING ASSISTANT (STNA) CERTIFICATION COURSE

What Is the Job Description of a State Tested Nursing Assistant (STNA)?

STNAs are certified nursing assistants. The job of a state tested nursing assistant (STNA) is to assist patients, monitor their health, serve meals, transport them as needed, and otherwise support a physician. People in this job frequently provide a wide range of services, including assisted living care, rehabilitation therapy, home health care, and emotional support. An STNA may be asked to bathe, shave, feed, or dress patients, on top of helping them with the toilet, skin and nail care, and any other day-to-day things they need.

An STNA is a great way to explore and experience the allied health field!
Starting pay for an STNA IS \$12- \$19 an hour.

CLASS OFFERING: (You Must be 16 Years Old)

The STNA Course is one trimester at Dixie Heights high school. The class will meet Monday through Friday based on the following schedule:

Dixie Heights High School

1:20 - 2:30 (5th Period)

Offered 1st, 2nd, or 3rd Trimesters

Four Friday classes will be held at Gateway Community and Technical College (GCTC) to learn the hands-on skills portion of the curriculum. Transportation will be provided for the Friday Skills sessions.

One weekend – Saturday and Sunday – is required to complete 16 hours of clinical experience. Scholars will need to provide their own transportation to the clinical location. Dates of clinical to be provided at first class.

The STNA Certification Test cost of \$115.00 will be paid by the Kenton County School District.

Cost to the Scholar:

Items	Required	Total Cost for Scholars
Scrubs – Galaxy Blue	YES	\$24.80
Background Check	YES	\$34.20
TB Test (May be covered by Insurance)	YES	\$20.00
TOTAL		\$78.00

See your high school counselor to apply!



Dixie Heights - Administrative Support

This pathway is designed to provide scholars an advanced level experience that will propel them into the 21st century business world as they serve in positions such as college interns, administrative assistants, graduate assistants, and office managers. Instruction includes areas of fundamental business procedures, human resource management, time management software, workstation management, travel planning, financial reporting, payroll, mail procedures, effective communication skills, and ethical decision-making skills.

Projected Freshman-Junior Schedule

Denotes Dual-Credit Course OR AP Course

Grade	Track	Career Pathway Elective	English	Math	Science	Social Studies	Other Classes
9th	Traditional	Business & Marketing Essentials A&B	English 1A, 1B, & 1C	Algebra 1A & 1B	Integrated Science A & B	Integrated Social Studies A & B	Health/PE Optional: Spanish 1A & 1B or German 1A & 1B
	Accelerated	Business & Marketing Essentials A&B	Accelerated English 1A & 1B	Accelerated Geometry 1A & 1B	Accelerated Biology A & B	AP Government	
10th	Traditional	Digital Literacy A&B	English 2A, 2B, & 2C	Geometry 1A & 1B	Biology A & B	World Civilizations A & B	Optional: Spanish 2A & 2B or German 2A & 2B
	Accelerated	Digital Literacy A&B	Accelerated English 2A & 2B	Accelerated Algebra 2A & 2B	Chemistry A & B	AP European History	
11th	Traditional	Accounting A&B EOP Required	English 3A, 3B, & 3C	Algebra 2A, 2B, & 2C	Chemistry A & B	US History A & B	Optional: Continued Spanish/German or NKU Dual credit
	Accelerated	Optional: Accounting A&B EOP Required Intro to Bus TMU BUA 105 Intro Leadership TMU ELS 215	Accelerated English 3A & 3B	Optional: Pre-calculus A & B Intro to Calculus Honors	Optional: AP or Dual Credit Biology, Chemistry Dual Credit: Physics	AP US History	
12th	Traditional	Business Communications A&B Optional: Business Internship	English 4A & 4B	Probability & Statistics	Robotics	Optional: Psychology, Sociology, Dictators & Tyrants or Political Science	Optional: Continued Spanish/German or NKU Dual credit
	Accelerated	Optional: Business Communications A&B Business Internship Intro to Bus TMU BUA 105 Intro Leadership TMU ELS 215	Optional: AP Literature TMU: ENG 255 NKU ENG 101, 102 or 200	Optional: AP Statistics NKU 205: Statistics NKU 114: Finite Math	Optional: AP or Dual Credit Biology, Chemistry Dual Credit: Physics	Optional: AP Comparative Politics Dual Credit Psychology	

Industry Certifications offered: Administrative Support Services (KDE End of Course (EOP) Required), A.S.K. (Assessment of Skills and Knowledge of Business); Fundamental Business Concepts with 3 Microsoft Office Specialist (MOS) certifications: Word, Excel, PowerPoint, Access, or Outlook

Administrative Support future careers and median salary in the State of Kentucky: Administrative Assistant - \$33,359 • Office Manager - \$49,593 • Customer Service Assistant - \$29,300 • Data Entry Specialist - \$28,140 • Receptionist - \$25,840 • Stenographer - \$28,760 • Dispatcher - \$36,397 • Shipping & Receiving Assistant - \$30,330 • Medical Transcriptionist - \$32,750 • Legal Secretary - \$32,810 • Paralegal - \$43,810 • Billing and Account Collector - \$32,860 • Accountant - \$59,250 • Bookkeeper - \$35,810 • Auditor - \$59,250

Dixie Heights - E-Commerce

This pathway focuses on the creation, execution, transmission, and evaluation of commercial messages in various media intended to promote and sell products, services, and brands; and that prepares individuals to function as advertising assistants, technicians, and managers. Includes instruction in advertising theory; marketing strategy; advertising design and production methods; campaign methods and techniques; media management; related principles of business management; and applicable technical and equipment skills.

Projected Freshman-Junior Schedule

Denotes Dual-Credit Course OR AP Course

Grade	Track	Career Pathway Elective	English	Math	Science	Social Studies	Other Classes
9th	Traditional	Business & Marketing Essentials A&B	English 1A, 1B, & 1C	Algebra 1A & 1B	Integrated Science A & B	Integrated Social Studies A & B	Health/PE
	Accelerated	Business & Marketing Essentials A&B	Accelerated English 1A & 1B	Accelerated Geometry 1A & 1B	Accelerated Biology A & B	AP Government	Optional: Spanish 1A & 1B or German 1A & 1B
10th	Traditional	Digital Literacy A&B	English 2A, 2B, & 2C	Geometry 1A & 1B	Biology A & B	World Civilizations A & B	Optional: Spanish 2A & 2B or German 2A & 2B
	Accelerated	Digital Literacy A&B	Accelerated English 2A & 2B	Accelerated Algebra 2A & 2B	Chemistry A & B	AP European History	
11th	Traditional	Marketing Principles A&B EOP Required	English 3A, 3B, & 3C	Algebra 2A, 2B, & 2BC	Chemistry A & B	US History A & B	Optional: Continued Spanish/German or NKU Dual credit
	Accelerated	Optional: Marketing Principles A&B EOP Required Intro to Bus TMU BUA 105 Intro Leadership TMU ELS 215	Accelerated English 3A & 3B	Optional: Pre-calculus A & B Intro to Calculus Honors	Optional: AP or Dual Credit Biology Chemistry Dual Credit: Physics	AP US History	
12th	Traditional	Fund of Social Media A & Advertising/Promotions A Optional: Yearbook Bus. Internship	English 4A & 4B	Probability & Statistics	Robotics	Psychology	Optional: Continued Spanish/German or NKU Dual credit
	Accelerated	Optional: Fund of Social Media A & Advertising/Promotions A Yearbook Bus. Internship Intro to Bus TMU BUA 105 Intro Leadership TMU ELS 215	Optional: AP Literature TMU: ENG 255 NKU ENG 101, 102 or 200	Optional: AP Statistics NKU 205: Statistics NKU 114: Finite Math	Optional: AP or Dual Credit Biology Chemistry Dual Credit: Physics	Optional: Dual Credit in Psychology or Economics	

Industry Certifications offered: Marketing (KDE End of Course (EOP) Required), A.S.K. (Assessment of Skills and Knowledge of Business): Fundamental Marketing Concepts OR Fundamental Business Concepts with 3 Microsoft Office Specialist (MOS) certifications: Word, Excel, PowerPoint, Access, or Outlook

E-Commerce future careers and median salary in the State of Kentucky: Sales Representative - \$53,060 • E-Business Consultant - \$68,770 • Advertising Account Executive - \$75,540 • Advertising Copywriter - \$48,620 • Market Research Analyst - \$52,440 • Economist - \$62,850 • Logistics Specialist - \$68,230 • Sports Marketer - \$94,180 • Economic Development Officer - \$35,000 • Graphic Designer - \$38,330

Dixie Heights - Management and Entrepreneurship

This pathway generally prepares individuals to plan, organize, direct, and control the functions and processes of a firm or organization. Includes instruction in management theory, human resources management and behavior, accounting and other quantitative methods, purchasing and logistics, organization and production, marketing, and business decision making.

Projected Freshman-Junior Schedule

Denotes Dual-Credit Course OR AP Course

Grade	Track	Career Pathway Elective	English	Math	Science	Social Studies	Other Classes
9th	Traditional	Business & Marketing Essentials A&B	English 1A, 1B, & 1C	Algebra 1A & 1B	Integrated Science A & B	Integrated Social Studies A & B	Health/PE Optional: Spanish 1A & 1B or German 1A & 1B
	Accelerated	Business & Marketing Essentials A&B	Accelerated English 1A & 1B	Accelerated Geometry 1A & 1B	Accelerated Biology A & B	AP Government	
10th	Traditional	Digital Literacy A&B	English 2A, 2B, & 2C	Geometry 1A & 1B	Biology A & B	World Civilizations A & B	Optional: Spanish 2A & 2B or German 2A & 2B
	Accelerated	Digital Literacy A&B	Accelerated English 2A & 2B	Accelerated Algebra 2A & 2C	Chemistry A & B	AP European History	
11th	Traditional	Intro to Management A&B EOP Required	English 3A, 3B, & 3C	Algebra 2A, 2B, & 2B	Chemistry A & B	US History A & B	Optional: Continued Spanish/German or NKU Dual credit
	Accelerated	Optional: Intro to Management A&B EOP Required Intro to Bus TMU BUA 105 Intro Leadership TMU ELS 215	Accelerated English 3A & 3B	Optional: Pre-calculus A & B Intro to Calculus Honors	Optional: AP or Dual Credit Biology, Chemistry Dual Credit: Physics	AP US History	
12th	Traditional	Entrepreneurship A & B Optional: Bus. Internship	English 4A & 4B	Probability & Statistics	Robotics	Optional: Psychology, Sociology, Dictators & Tyrants or Political Science	Optional: Continued Spanish/German or NKU Dual credit
	Accelerated	Optional: Entrepreneurship A & B Bus. Internship Intro to Bus TMU BUA 105 Intro Leadership TMU ELS 215	Optional: AP Literature TMU: ENG 255 NKU ENG 101, 102 or 200	Optional: AP Statistics NKU 205: Statistics NKU 114: Finite Math	Optional: AP or Dual Credit Biology, Chemistry Dual Credit: Physics	Optional: Dual Credit in Psychology or Economics	

Industry Certifications offered: Management & Entrepreneurship (KDE End of Course (EOP) Required) and A.S.K. (Assessment of Skills and Knowledge of Business); Fundamental Business Concepts or Concepts of Entrepreneurship/Management

Management/Entrepreneurship future careers and median salary in the State of Kentucky: Financial Bank Managers - \$99,980 • Account Manager - \$36,180 • Money Manager - \$51,980 • Venture Capitalist - \$100,000 • Corporate Trainer - \$51,750 • Entrepreneur - \$35,000 • Restaurant Manager - \$31,509 • Association Manager - \$57,980 • Hotel Manager - \$54,550 • Management Consultant - \$71,030 • Recruiter - \$52,980

Dixie Heights - Animal Science

This pathway focuses on the scientific principles that underline the breeding, care, and management of agricultural animals and the production, processing, and distribution of agricultural animal products. This includes developing better, more efficient ways of producing and processing meat, poultry, eggs and dairy products, as well as studying genetics, nutrition, reproduction, growth and development of animals.

Projected Freshman-Junior Schedule

Denotes Dual-Credit Course OR AP Course

Grade	Track	Career Pathway Elective	English	Math	Science	Social Studies	Other Classes
9th	Traditional	Agriscience A&B	English 1A, 1B, & 1C	Algebra 1A & 1B	Integrated Science A & B	Integrated Social Studies A & B	Health/PE
	Accelerated	Agriscience A&B	Accelerated English 1A & 1B	Accelerated Geometry 1A & 1B	Accelerated Biology A & B	AP Government	Optional: Spanish 1A & 1B or German 1A & 1B
10th	Traditional	Principles of Agriculture Science & Technology A&B	English 2A, 2B, & 2C	Geometry 1A & 1B	Biology A & B	World Civilizations A & B	Optional: Spanish 2A & 2B or German 2A & 2B
	Accelerated	Principles of Agriculture Science & Technology A&B	Accelerated English 2A & 2B	Accelerated Algebra 2A & 2B	Chemistry A & B	AP European History	
11th	Traditional	Animal Science A&B EOP Required	English 3A, 3B, & 3C	Algebra 2A, 2B, & 2C	Chemistry A & B	US History A & B	Optional: Continued Spanish/German or NKU Dual credit
	Accelerated	Animal Science A&B EOP Required	Accelerated English 3A & 3B	Optional: Pre-calculus A & B Intro to Calculus Honors	Anatomy & Physiology A&B	AP US History	
12th	Traditional	Veterinary Science A&B Optional: Animal Science Internship	English 4A & 4B	Probability & Statistics	Anatomy & Physiology A&B	Psychology	Optional: Continued Spanish/German or NKU Dual credit
	Accelerated	Veterinary Science A&B Optional: Animal Science Internship	Optional: AP Literature TMU: ENG 255 NKU ENG 101, 102 or 200	Optional: AP or Dual Credit Calculus NKU MAT 129	Optional: NKU BIO 120 NKU BIO 150 NKU CHE 120	Dual Credit Psychology	

Industry Certifications offered: Animal Science Systems (KDE End of Course (EOP) Required) and iCEV Elanco Fundamentals of Animal Science OR iCEV Elanco Veterinary Medical Applications

Animal Science future careers and median salary in the State of Kentucky: Veterinarian- \$79,250 • Veterinarian Technician - \$26,779 • Animal Trainer - \$24,750 • Zookeeper - \$22,430 • Zoologist - \$55,600 • Wildlife Technician - \$42,690 • Animal Services Worker - \$27,030 • Pet Groomer - \$22,430 • Biologist - \$72,360 • Butcher - \$28,610

Dixie Heights - Horticulture and Plant Science Systems

This pathway focuses on the scientific principles that underlie the breeding, cultivation, and production of agricultural plants, and the production, processing, and distribution of agricultural plant products. Includes instruction in the plant sciences, crop cultivation and production, and agricultural and food products processing.

Projected Freshman-Junior Schedule

Denotes Dual-Credit Course OR AP Course

Grade	Track	Career Pathway Elective	English	Math	Science	Social Studies	Other Classes
9th	Traditional	Agriscience A&B	English 1A, 1B, & 1C	Algebra 1A & 1B	Integrated Science A & B	Integrated Social Studies A & B	Health/PE
	Accelerated	Agriscience A&B	Accelerated English 1A & 1B	Accelerated Geometry 1A & 1B	Accelerated Biology A & B	AP Government	Optional: Spanish 1A & 1B or German 1A & 1B
10th	Traditional	Principles of Agriculture Science & Technology A&B	English 2A, 2B, & 2C	Geometry 1A & 1B	Biology A & B	World Civilizations A & B	Optional: Spanish 2A & 2B or German 2A & 2B
	Accelerated	Principles of Agriculture Science & Technology A&B	Accelerated English 2A & 2B	Accelerated Algebra 2A & 2B	Chemistry A & B	AP European History	
11th	Traditional	Agri-Biology A&B EOP Required	English 3A, 3B, & 3C	Algebra 2A, 2B, & 2C	Chemistry A & B	US History A & B	Optional: Continued Spanish/German or NKU Dual credit
	Accelerated	Agri-Biology A&B EOP Required	Accelerated English 3A & 3B	Optional: Pre-calculus A & B Intro to Calculus Honors	Environmental Science	AP US History	
12th	Traditional	Intro to Greenhouse & Crop Production A&B Optional: Horticulture Internship	English 4A & 4B	Probability & Statistics	Environmental Science	Elective	Optional: Continued Spanish/German or NKU Dual credit
	Accelerated	Intro to Greenhouse & Crop Production A&B Optional: Horticulture Internship	Optional: AP Literature TMU: ENG 255 NKU ENG 101, 102 or 200	Optional: AP Statistics NKU STA 205	Optional: NKU BIO 150 NKU ENV 110	Elective	

Industry Certifications offered: Horticulture and Plant Science Systems (KDE End of Course (EOP) Required) and ICEV Bayer Crop and Plant Science

Horticulture and Plant Science careers and median salary in the State of Kentucky: Horticulturist - \$23,960 • Landscape Architect - \$61,320 • Botanist - \$60,430 • Landscaper - \$27,521 • Florist - \$23,380 • Farmer - \$87,080 • Nursery/Greenhouse Grower - \$23,960 • Agricultural Technician - \$39,830 • Biotechnologist - \$42,690 • Agronomist - \$60,430 • Forest Conservation Officer - \$46,990 • Agricultural Educator - \$55,964 • Arborist - \$32,270 • Aquaculturist - \$87,080 • Food Scientist - \$60,530 • Agricultural Engineer - \$68,200

Dixie Heights - Pre-Law Studies

Scholars will obtain skills in preparation for legal careers in law firms, courtrooms, government, and businesses. Instruction will cover legal vocabulary and ethics, the philosophy and history of criminal justice, effective and persuasive communications (oral and written), and the state and federal court systems.

Projected Freshman-Junior Schedule Denotes Dual-Credit Course OR AP Course

Grade	Track	Career Pathway Elective	English	Math	Science	Social Studies	Other Classes
9th	Traditional	Business & Marketing Essentials A & Business Law	English 1A, 1B, & 1C	Algebra 1A & 1B	Integrated Science A & B	Integrated Social Studies A & B	Health/PE Optional: Spanish 1A & 1B or German 1A & 1B
	Accelerated	Business & Marketing Essentials A & Business Law	Accelerated English 1A & 1B	Accelerated Geometry 1A & 1B	Accelerated Biology A & B	AP Government	
10th	Traditional	Intro to Law TMU PLS 105	English 2A, 2B, & 2C	Geometry 1A & 1B	Biology A & B	World Civilizations A & B	Optional: Spanish 2A & 2B or German 2A & 2B
	Accelerated	Intro to Law TMU PLS 105	Accelerated English 2A & 2B	Accelerated Algebra 2A & 2B	Chemistry A & B	AP European History	
11th	Traditional	Intro to Criminal Justice EKU CRJ 101	English 3A, 3B, & 3C	Algebra 2A, 2B, & 2C	Chemistry A & B	US History A & B	Optional: Continued Spanish/German or NKU Dual credit
	Accelerated	Intro to Criminal Justice EKU CRJ 101	Accelerated English 3A & 3B	Optional: Pre-calculus A & B Intro to Calculus Honors	Forensics Optional: AP or Dual Credit Science Elective	AP US History	
12th	Traditional	Civil & Criminal Procedure TMU LAW 320	English 4A & 4B	Probability & Statistics	Forensics	Optional: Psychology, Sociology, Dictators & Tyrants or Political Science	Optional: Continued Spanish/German or NKU Dual credit
	Accelerated	Civil & Criminal Procedure TMU LAW 320	Optional: AP Literature TMU: ENG 255 NKU ENG 101, 102 or 200	Optional: AP or Dual Credit Calculus NKU MAT 129	Optional: AP or Dual Credit Science Elective	AP International Politics	

Industry Certifications offered: NOCTI Criminal Justice – Advanced

Pre-Law Studies future careers and median salary in the State of Kentucky: Judge - \$135,080 • Lawyers - \$75,700 (Types: Corporate/Commercial • Criminal Lawyer • Civil Litigator) • Entry Level: Law Clerk (\$35,000-\$65,000) • Mid-Level: Associate Lawyer (\$60,000-\$180,000) • Experienced: General Counsel or Partner (\$150,000-\$500,000)



CAREER PATHWAYS

**AVIATION MECHANICS
& DRONE CERTIFICATION**

**NEW STARTING
2021-22
SCHOOL YEAR!**

STATE TESTING NURSING ASSISTANT

CROP AND PLANT PRODUCTION

EMERGENCY FIRST RESPONDERS

HOMELAND SECURITY

JROTC*

LAW AND CRIMINAL JUSTICE

LAW ENFORCEMENT

PHARMACY TECHNICIAN

TEACHER EDUCATION CAREER EXPLORATION TRACK

VETERINARIAN ASSISTANT

*Open to Scholars from Dixie Heights, Scott, and Simon Kenton High Schools

Cincinnati State College in a Partnership with Kenton County Schools

Aircraft Mechanic, Avionics & Drone Pathway (Juniors and Seniors)



Fall 2021	Unmanned Aerial Systems	AMT250
	Aircraft Orientation	AMT105
Spring 2022	Aviation Standard Practices	AMT100
Fall 2022	Avionics 1	AMT271
	Aircraft Weight and Balance	AMT115
Spring 2023	Avionics 2	AMT272
	Aviation Math	MAT122
Spring 2023	OPTION (If student already has CCP Math Credit)	
	Aircraft Welding Processes	AMT130
	Aircraft Non-Metal Structures	AMT120

Three Certifications: UAS Certificate and eligibility to test for FAA Remote Pilot Certificate for Drone
Avionics Certificate and eligibility to test for NCATT Aircraft Electrician Certificate (AET).
AMT General Certificate of Completion for FAA General Airmen Knowledge Test (written test only)

NKY thrives

FEAM Aero sets up new hangar at CVG expected to generate 100 aircraft mechanic jobs

SOAPBOX STAFF | THURSDAY, JANUARY 23, 2020 |

FEAM Aero, which began operations at CVG in July 2015, employs approximately 200 technicians who provide services for DHL, Amazon, and passenger aircraft.

Their latest hangar: \$19 million facility spread out over 103,000 feet is expected to generate **100 aircraft mechanic jobs** and will focus on maintenance, repair, and overhaul work for **747 aircraft**.

According to FEAM managing director Cam Murphy, "As aviation and aircraft maintenance services continue to be in high demand, we're grateful to CVG Airport for understanding the need for our services, and for allowing this hangar to be part of the economic and innovative growth of the airport and state."

Aircraft Mechanic Salary

The average Aircraft Mechanic salary in the United States is **\$73,436** as of February 26, 2020. The range for our most popular Aircraft Mechanic positions typically falls between \$34,759 and \$112,112. Keep in mind that salary ranges can vary widely depending on many important factors; including position, education, certifications, additional skills, and the number of years you have spent in your profession.

STATE TESTED NURSING ASSISTANT (STNA) CERTIFICATION COURSE

What Is the Job Description of a State Tested Nursing Assistant (STNA)?

STNAs are certified nursing assistants. The job of a state tested nursing assistant (STNA) is to assist patients, monitor their health, serve meals, transport them as needed, and otherwise support a physician. People in this job frequently provide a wide range of services, including assisted living care, rehabilitation therapy, home health care, and emotional support. An STNA may be asked to bathe, shave, feed, or dress patients, on top of helping them with the toilet, skin and nail care, and any other day-to-day things they need.

An STNA is a great way to explore and experience the allied health field!

Starting pay for an STNA IS \$12- \$19 an hour.

CLASS OFFERING: (You Must be 16 Years Old)

The STNA Course is one trimester at Scott high school. The class will meet Monday through Friday based on the following schedule:

Scott High School

7:50 – 8:50am (1st Period)

Offered 1st, 2nd, or 3rd Trimesters

Four Friday classes will be held at Gateway Community and Technical College (GCTC) to learn the hands-on skills portion of the curriculum. Transportation will be provided for the Friday Skills sessions.

One weekend – Saturday and Sunday – is required to complete 16 hours of clinical experience. Scholars will need to provide their own transportation to the clinical location. Dates of clinical to be provided at first class.

The STNA Certification Test cost of \$115.00 will be paid by the Kenton County School District.

Cost to the Scholar:

Items	Required	Total Cost for Scholars
Scrubs – Galaxy Blue	YES	\$24.80
Background Check	YES	\$34.20
TB Test (May be covered by Insurance)	YES	\$20.00
TOTAL		\$78.00

See your high school counselor to apply!



Scott – STNA – State Tested Nursing Assistant

The courses are designed to give scholars the requisite skills to pursue a career in the field of Nursing and Medical Services. Scholars work involves the study Nursing Assistant Care. Scholars will be provided the skills to practice the same patient care techniques used by medical professionals, in the care of a nurse. Scholars will become certified nurse assistants in this course.

Projected Freshman-Junior Schedule

Denotes Dual-Credit Course OR AP Course

Grade	Track	Career Pathway Elective	English	Math	Science	Social Studies	Other Classes
9th	Traditional		English 1A, 1B, & 1C	Algebra 1A & 1B	Intro to Science A & B	Intro to Social Studies A & B	Health/PE
	Accelerated		Accelerated English 1A & 1B	Accelerated Geometry 1A & 1B	Biology A & B	AP Government	Optional: Spanish 1A & 1B or German 1A & 1B
10th	Traditional		English 2A, 2B, & 2C	Geometry 1A & 1B	Biology A & B	World Civilizations 1500 & 1812	Optional: Spanish 2A & 2B or German 2A & 2B
	Accelerated		Accelerated English 2A & 2B	Accelerated Algebra 2A & 2B	Chemistry 1A & 1B	AP European History	
11th	Traditional	STNA	English 3A, 3B, & 3C	Algebra 2A, 2B, & 2C	Applied Chemistry	US History 1865 & 1925	Optional
	Accelerated	STNA	Accelerated English 3A & 3B	Pre-calculus A, B & C	Chemistry 1A & 1B	History 102 & 103	
12th	Traditional	STNA	Speech & Communication/ Literacy for the Workplace	Applied Math or Personal Global Finance or College Algebra	Science Elective	Social Studies Elective	Optional
	Accelerated	STNA	ENG 101 & 102	AP Calculus or Dual Credit Stats	Anatomy or AP Biology or AP Chemistry or AP Physics	US History 108 & 109	

Industry Certifications Offered: State Tested Nursing Assistant Certification

Emergency First Responders and median salary in the State of Kentucky: STNA hourly rate \$13.20/hr • Annual Salary \$25,500 • Lead to Medical Positions with further certification

Scott – Crop & Plant Production

Scholars will focus on biology specific to plants, their ecology, and crop sciences. Curriculum will follow the iCEV course review for certification, including taxonomy and biochemistry of plants, cellular and physiological makeup of plants, basic plant identification, photosynthesis and mitosis, plant genetics, and plant ecology. Additionally, curriculum will also cover plant pests, crop production, and water management. This course follows iCEV guidelines for the Bayer Crop and Plant Science certification and is the first course in a two-course sequence that provides an opportunity to obtain national certification. Scholars will be in charge of a variety of plants in our greenhouse and on the green rooftop areas. Duties will include monitoring growth, water and temperature, deciding on new plants to introduce, pest management, and plant propagation. At the completion of this course, scholars will be prepared for the Bayer Crop and Plant Science certification.

Projected Freshman-Junior Schedule Denotes Dual-Credit Course OR AP Course

Grade	Track	Career Pathway Elective	English	Math	Science	Social Studies	Other Classes
9th	Traditional		English 1A, 1B, & 1C	Algebra 1A & 1B	Intro to Science A & B	Intro to Social Studies A & B	Health/PE
	Accelerated		Accelerated English 1A & 1B	Accelerated Geometry 1A & 1B	Biology A & B	AP Government	Optional: Spanish 1A & 1B or German 1A & 1B
10th	Traditional		English 2A, 2B, & 2C	Geometry 1A & 1B	Biology A & B	World Civilizations 1500 & 1812	Optional: Spanish 2A & 2B or German 2A & 2B
	Accelerated	Ecology & Plant Science	Accelerated English 2A & 2B	Accelerated Algebra 2A & 2B	Chemistry 1A & 1B	AP European History	
11th	Traditional	Ecology & Plant Science	English 3A, 3B, & 3C	Algebra 2A, 2B, & 2C	Applied Chemistry	US History 1865 & 1925	Optional
	Accelerated	Greenhouse Management	Accelerated English 3A & 3B	Pre-calculus A, B & C	Chemistry 1A & 1B	History 102 & 103	
12th	Traditional	Greenhouse Management	Speech & Communication/ Literacy for the Workplace	Applied Math or Personal Global Finance or College Algebra	Science Elective	Social Studies Elective	Optional
	Accelerated	Crop & Plant Internship	ENG 101 & 102	AP Calculus or Dual Credit Stats	Anatomy or AP Biology or AP Chemistry or AP Physics	US History 108 & 109	

Industry Certifications offered: Bayer Crop and Plant Science certification at the completion of Greenhouse Management

Crop and Plant Production careers and median salary in the State of Kentucky: Agricultural and Food Science Technicians - \$40,860 • Biochemists and Biophysicists - \$93,280 • Biological Technicians - \$44,500 • Chemical Technicians - \$48,160 • Conservation Scientists and Foresters - \$61,340 • Environmental Scientists and Specialists - \$71,130 • Farmers, Ranchers, and Other Agricultural Managers - \$61,950 • Microbiologists - \$71,650 • Veterinarians - \$93,830 • Zoologists and Wildlife Biologists - \$63,420

Scott – Emergency First Responders

The courses are designed to give scholars the requisite skills to pursue a career in the field of in Emergency services. Scholars work involves the study the Emergency First Response course. Scholars will be provided the skills to practice the same patient care techniques used by medical professionals. Scholars will be become certified in CPR and First Aid program, providing the skills they need to potentially save a life. The course builds the confidence and skills needed to provide basic emergency care.

Projected Freshman-Junior Schedule

Denotes Dual-Credit Course OR AP Course

Grade	Track	Career Pathway Elective	English	Math	Science	Social Studies	Other Classes
9th	Traditional		English 1A, 1B, & 1C	Algebra 1A & 1B	Intro to Science A & B	Intro to Social Studies A & B	Health/PE
	Accelerated		Accelerated English 1A & 1B	Accelerated Geometry 1A & 1B	Biology A & B	AP Government	Optional: Spanish 1A & 1B or German 1A & 1B
10th	Traditional		English 2A, 2B, & 2C	Geometry 1A & 1B	Biology A & B	World Civilizations 1500 & 1812	Optional: Spanish 2A & 2B or German 2A & 2B
	Accelerated		Accelerated English 2A & 2B	Accelerated Algebra 2A & 2B	Chemistry 1A & 1B	AP European History	
11th	Traditional		English 3A, 3B, & 3C	Algebra 2A, 2B, & 2C	Applied Chemistry	US History 1865 & 1925	Optional
	Accelerated		Accelerated English 3A & 3B	Pre-calculus A, B & C	Chemistry 1A & 1B	History 102 & 103	
12th	Traditional	Emergency First Responders	Speech & Communication/ Literacy for the Workplace	Applied Math or Personal Global Finance or College Algebra	Science Elective	Social Studies Elective	Optional
	Accelerated	Emergency First Responders	ENG 101 & 102	AP Calculus or Dual Credit Stats	Anatomy or AP Biology or AP Chemistry or AP Physics	US History 108 & 109	

Industry Certifications Offered: Emergency First Responders, CPR, AED

Emergency First Responders and median salary in the State of Kentucky: EMT and paramedics - \$34,320 • Projected Job Growth 7% for all EMTs and paramedics•

Scott - Homeland Security

The courses are designed to give scholars the requisite skills to pursue a career in the field of in Homeland Security. Scholars work involves the study of National Incidents & Command Systems, Initial Actions in Emergency Incidents, Responding to National Emergencies, and Terrorism and Counterterrorism Operations & Internships. Scholars can complete this program during 9th and 10th or 11th and 12th grade.

Projected Freshman-Junior Schedule

Denotes Dual-Credit Course OR AP Course

Grade	Track	Career Pathway Elective	English	Math	Science	Social Studies	Other Classes
9th	Traditional	National Incidents & Command Systems	English 1A, 1B, & 1C	Algebra 1A & 1B	Intro to Science A & B	Intro to Social Studies A & B	Health/PE Optional: Spanish 1A & 1B or German 1A & 1B
	Accelerated	National Incidents & Command Systems	Accelerated English 1A & 1B	Accelerated Geometry 1A & 1B	Biology A & B	AP Government	
10th	Traditional	Responding to National Emergencies	English 2A, 2B, & 2C	Geometry 1A & 1B	Biology A & B	World Civilizations 1500 & 1812	Optional: Spanish 2A & 2B or German 2A & 2B
	Accelerated	Responding to National Emergencies	Accelerated English 2A & 2B	Accelerated Algebra 2A & 2B	Chemistry 1A & 1B	AP European History	
11th	Traditional	National Incidents & Command Systems	English 3A, 3B, & 3C	Algebra 2A, 2B, & 2C	Applied Chemistry	US History 1865 & 1925	Optional
	Accelerated	National Incidents & Command Systems	Accelerated English 3A & 3B	Pre-calculus A, B & C	Chemistry 1A & 1B	History 102 & 103	
12th	Traditional	Responding to National Emergencies	Speech & Communication/ Literacy for the Workplace	Applied Math or Personal Global Finance or College Algebra	Science Elective	Social Studies Elective	Optional
	Accelerated	Responding to National Emergencies	ENG 101 & 102	AP Calculus or Dual Credit Stats	Anatomy or AP Biology or AP Chemistry or AP Physics	US History 108 & 109	

Industry Certifications Offered: (A) National Incidents & Command Systems (B) Initial Actions in Emergency Incidents (C) Responding to National Emergencies (D) Terrorism and Counterterrorism Operations & Internships (E) First Responder

Homeland Security careers and median salary in the State of Kentucky: Law Enforcement Careers - \$65,400 • Immigration and Travel Security Careers - \$50,430 • Prevention and Response Careers - \$70,338 • Mission Support Careers - \$51,581

Scott – JROTC

Open to Scholars from Dixie Heights, Scott, & Simon Kenton High Schools

The courses are designed to give scholars the requisite skills to pursue a career in the field of in Homeland Security. Scholars work involves the study of National Incidents & Command Systems, Initial Actions in Emergency Incidents, Responding to National Emergencies, and Terrorism and Counterterrorism Operations & Internships.

Projected Freshman-Junior Schedule

Denotes Dual-Credit Course OR AP Course

Grade	Track	Career Pathway Elective	English	Math	Science	Social Studies	Other Classes
9th	Traditional	Leadership Education & Training I	English 1A, 1B, & 1C	Algebra 1A & 1B	Intro to Science A & B	Intro to Social Studies A & B	Health/PE
	Accelerated	Leadership Education & Training I	Accelerated English 1A & 1B	Accelerated Geometry 1A & 1B	Biology A & B	AP Government	Optional: Spanish 1A & 1B or German 1A & 1B
10th	Traditional	Leadership Education & Training II	English 2A, 2B, & 2C	Geometry 1A & 1B	Biology A & B	World Civilizations 1500 & 1812	Optional: Spanish 2A & 2B or German 2A & 2B
	Accelerated	Leadership Education & Training II	Accelerated English 2A & 2B	Accelerated Algebra 2A & 2B	Chemistry 1A & 1B	AP European History	
11th	Traditional	Leadership Education & Training III	English 3A, 3B, & 3C	Algebra 2A, 2B, & 2C	Applied Chemistry	US History 1865 & 1925	Optional
	Accelerated	Leadership Education & Training III	Accelerated English 3A & 3B	Pre-calculus A, B & C	Chemistry 1A & 1B	History 102 & 103	
12th	Traditional	Leadership Education & Training IV	Speech & Communication/ Literacy for the Workplace	Applied Math or Personal Global Finance or College Algebra	Science Elective	Social Studies Elective	Optional
	Accelerated	Leadership Education & Training IV	ENG 101 & 102	AP Calculus or Dual Credit Stats	Anatomy or AP Biology or AP Chemistry or AP Physics	US History 108 & 109	

Industry Certifications Offered: Three Years in JROTC

Military careers and median salary in the State of Kentucky: Military - \$65,147 • Law Enforcement Careers - \$65,400 • Immigration and Travel Security Careers - \$50,430 • Prevention and Response Careers - \$70,338 • Mission Support Careers - \$51,581

Scott – Law & Criminal Justice

The courses are designed to give scholars the requisite skills to pursue a career in the field of Law and Criminal Justice. Scholars work involves the study the comprehensive examination of the criminal justice and pre-law career path. Topics include law and courtroom procedure, as well as ethical situations regarding the criminal justice system.

Projected Freshman-Junior Schedule

Denotes Dual-Credit Course OR AP Course

Grade	Track	Career Pathway Elective	English	Math	Science	Social Studies	Other Classes
9th	Traditional		English 1A, 1B, & 1C	Algebra 1A & 1B	Intro to Science A & B	Intro to Social Studies A & B	Health/PE
	Accelerated		Accelerated English 1A & 1B	Accelerated Geometry 1A & 1B	Biology A & B	AP Government	Optional: Spanish 1A & 1B or German 1A & 1B
10th	Traditional		English 2A, 2B, & 2C	Geometry 1A & 1B	Biology A & B	World Civilizations 1500 & 1812	Optional: Spanish 2A & 2B or German 2A & 2B
	Accelerated		Accelerated English 2A & 2B	Accelerated Algebra 2A & 2B	Chemistry 1A & 1B	AP European History	
11th	Traditional		English 3A, 3B, & 3C	Algebra 2A, 2B, & 2C	Applied Chemistry	US History 1865 & 1925	Optional
	Accelerated		Accelerated English 3A & 3B	Pre-calculus A, B & C	Chemistry 1A & 1B	History 102 & 103	
12th	Traditional	Law & Criminal Justice	Speech & Communication/ Literacy for the Workplace	Applied Math or Personal Global Finance or College Algebra	Science Elective	Social Studies Elective	Optional
	Accelerated	Law & Criminal Justice	ENG 101 & 102	AP Calculus or Dual Credit Stats	Anatomy or AP Biology or AP Chemistry or AP Physics	US History 108 & 109	

Industry Certifications Offered: Advanced Criminal Justice

Law & Criminal Justice median salary in the State of Kentucky: Legal Secretary \$49,500 • Paralegal \$49,500 • Law Office Manager \$90,050 • Mediator \$59,770 • Court Reporter \$51, 320 • Legal Nurse Consultant \$68,450

Scott – Law Enforcement

The courses are designed to give scholars the requisite skills to pursue a career in the field of Law Enforcement. Scholars work involves the study the comprehensive examination of the Law Enforcement. The class will primarily consist of Police Concepts and Procedures. The history of policing will also be addressed as well as the evolution of Law Enforcement. The class will touch on key court cases that have established current law enforcement procedures. The first semester will be a learning experience for pacing and relevant content.

Projected Freshman-Junior Schedule

Denotes Dual-Credit Course OR AP Course

Grade	Track	Career Pathway Elective	English	Math	Science	Social Studies	Other Classes
9th	Traditional		English 1A, 1B, & 1C	Algebra 1A & 1B	Intro to Science A & B	Intro to Social Studies A & B	Health/PE
	Accelerated		Accelerated English 1A & 1B	Accelerated Geometry 1A & 1B	Biology A & B	AP Government	Optional: Spanish 1A & 1B or German 1A & 1B
10th	Traditional		English 2A, 2B, & 2C	Geometry 1A & 1B	Biology A & B	World Civilizations 1500 & 1812	Optional: Spanish 2A & 2B or German 2A & 2B
	Accelerated		Accelerated English 2A & 2B	Accelerated Algebra 2A & 2B	Chemistry 1A & 1B	AP European History	
11th	Traditional		English 3A, 3B, & 3C	Algebra 2A, 2B, & 2C	Applied Chemistry	US History 1865 & 1925	Optional
	Accelerated		Accelerated English 3A & 3B	Pre-calculus A, B & C	Chemistry 1A & 1B	History 102 & 103	
12th	Traditional	Law Enforcement	Speech & Communication/ Literacy for the Workplace	Applied Math or Personal Global Finance or College Algebra	Science Elective	Social Studies Elective	Optional
	Accelerated	Law Enforcement	ENG 101 & 102	AP Calculus or Dual Credit Stats	Anatomy or AP Biology or AP Chemistry or AP Physics	US History 108 & 109	

Industry Certifications Offered: Advanced Criminal Justice, Policing

Law & Criminal Justice median salary in the State of Kentucky: Police Officer \$61,600 • Federal Law Enforcement Agent \$61,600 • Transit and Railroad Police \$61,600 • Private Investigator \$48,190 • Security Guard \$25,770 • Criminologist \$56,750

Scott - Pharmacy Technician

This course is designed for juniors or seniors to provide the knowledge and basic training to prepare scholars for entry-level pharmacy work as well as support to ultimately obtain a Pharmacy Technician certificate. Course content will include medication review, aseptic techniques, calculations, and pharmacy operations.

Scholars pursuing a Pharmacy Technician certificate will enroll in the online Edgenuity Pharmacy Technician A and B courses and this face-to-face course will serve as a lab practical to augment the online course. Upon successful completion of this course and an internship at a local pharmacy, scholars may be eligible to take the Pharmacy Technician Certification.

Projected Freshman-Junior Schedule Denotes Dual-Credit Course OR AP Course

Grade	Track	Career Pathway Elective	English	Math	Science	Social Studies	Other Classes
9th	Traditional		English 1A, 1B, & 1C	Algebra 1A & 1B	Intro to Science A & B	Intro to Social Studies A & B	Health/PE
	Accelerated		Accelerated English 1A & 1B	Accelerated Geometry 1A & 1B	Biology A & B	AP Government	Optional: Spanish 1A & 1B or German 1A & 1B
10th	Traditional	Office Assistant	English 2A, 2B, & 2C	Geometry 1A & 1B	Biology A & B	World Civilizations 1500 & 1812	Optional: Spanish 2A & 2B or German 2A & 2B
	Accelerated		Accelerated English 2A & 2B	Accelerated Algebra 2A & 2B	Chemistry 1A & 1B	AP European History	
11th	Traditional	Pharmacy Tech	English 3A, 3B, & 3C	Algebra 2A, 2B, & 2C	Applied Chemistry	US History 1865 & 1925	Optional
	Accelerated	Pharmacy Tech	Accelerated English 3A & 3B	Pre-calculus A, B & C	Chemistry 1A & 1B	History 102 & 103	
12th	Traditional	Pharmacy Tech Internship	Speech & Communication/ Literacy for the Workplace	Applied Math or Personal Global Finance or College Algebra	Science Elective	Social Studies Elective	Optional
	Accelerated	Pharmacy Tech Internship	ENG 101 & 102	AP Calculus or Dual Credit Stats	Anatomy or AP Biology or AP Chemistry or AP Physics	US History 108 & 109	

Industry Certifications Offered: Pharmacy Technician

Pharmacy Technician careers and median salary in the State of Kentucky: Certified Pharmacist Technician - \$33,104 • Customer Service Representative - \$31,720 • Pharmacist - \$121,500 • Pharmaceutical Sales Associate - \$101,000

Scott – Teacher Education Scholars Career Exploration Track

The courses are designed to give scholars the requisite skills to pursue a career in the field of in Education. The Teacher Education Scholars (TES) program empowers scholars at participating high schools to become educators in a variety of disciplines.

Projected Freshman-Junior Schedule

Denotes Dual-Credit Course OR AP Course

Grade	Track	Career Pathway Elective	English	Math	Science	Social Studies	Other Classes
9th	Traditional		English 1A, 1B, & 1C	Algebra 1A & 1B	Intro to Science A & B	Intro to Social Studies A & B	Health/PE
	Accelerated		Accelerated English 1A & 1B	Accelerated Geometry 1A & 1B	Biology A & B	AP Government	Optional: Spanish 1A & 1B or German 1A & 1B
10th	Traditional		English 2A, 2B, & 2C	Geometry 1A & 1B	Biology A & B	World Civilizations 1500 & 1812	Optional: Spanish 2A & 2B or German 2A & 2B
	Accelerated		Accelerated English 2A & 2B	Accelerated Algebra 2A & 2B	Chemistry 1A & 1B	AP European History	
11th	Traditional	NKU EDU 104 NKU EDU 305	English 3A, 3B, & 3C	Algebra 2A, 2B, & 2C	Applied Chemistry	US History 1865 & 1925	Optional
	Accelerated	NKU EDU 104 NKU EDU 305	Accelerated English 3A & 3B	Pre-calculus A, B & C	Chemistry 1A & 1B	History 102 & 103	
12th	Traditional	NKU EDU 300 NKU EDU 316	Speech & Communication/ Literacy for the Workplace	Applied Math or Personal Global Finance or College Algebra	Science Elective	Social Studies Elective	Optional
	Accelerated	NKU EDU 300 NKU EDU 316	ENG 101 & 102	AP Calculus or Dual Credit Stats	Anatomy or AP Biology or AP Chemistry or AP Physics	US History 108 & 109	

Industry Certifications Offered: Teacher, Education Professional

Emergency First Responders and median salary in the State of Kentucky: Teacher Starting Salary \$36,494 •

Scott - Veterinarian Assistant

Veterinarian Assistant Program offers scholars the opportunity to explore the Human-Animal Bond, Veterinary Terminology, Basic Canine and Feline Anatomy, Dog/Cat/Livestock Breeds, Animal Nutrition, Zoonotic Diseases, and Animal Behavior. These courses will follow National Association of Veterinary Technicians in America (NAVTA) guidelines, and provides an opportunity to obtain national certification as an Approved Veterinary Assistant.

Projected Freshman-Junior Schedule

Denotes Dual-Credit Course OR AP Course

Grade	Track	Career Pathway Elective	English	Math	Science	Social Studies	Other Classes
9th	Traditional		English 1A, 1B, & 1C	Algebra 1A & 1B	Intro to Science A & B	Intro to Social Studies A & B	Health/PE
	Accelerated		Accelerated English 1A & 1B	Accelerated Geometry 1A & 1B	Biology A & B	AP Government	Optional: Spanish 1A & 1B or German 1A & 1B
10th	Traditional	Office Assistant	English 2A, 2B, & 2C	Geometry 1A & 1B	Biology A & B	World Civilizations 1500 & 1812	Optional: Spanish 2A & 2B or German 2A & 2B
	Accelerated	Principles of Veterinary Assistance	Accelerated English 2A & 2B	Accelerated Algebra 2A & 2B	Chemistry 1A & 1B	AP European History	
11th	Traditional	Principles of Veterinary Assistance	English 3A, 3B, & 3C	Algebra 2A, 2B, & 2C	Applied Chemistry	US History 1865 & 1925	Optional
	Accelerated	Advanced Veterinarian Assistance	Accelerated English 3A & 3B	Pre-calculus A, B & C	Chemistry 1A & 1B	History 102 & 103	
12th	Traditional	Advanced Veterinarian Assistance & Internship	Speech & Communication/ Literacy for the Workplace	Applied Math or Personal Global Finance or College Algebra	Science Elective	Social Studies Elective	Optional
	Accelerated	Veterinarian Internship	ENG 101 & 102	AP Calculus or Dual Credit Stats	Anatomy or AP Biology or AP Chemistry or AP Physics	US History 108 & 109	

Industry Certifications Offered: Veterinary Assistant

Veterinarian Assistant careers and median salary in the State of Kentucky: Veterinary Assistant - \$27,540 • Animal Care and Service Workers - \$23,950 • Medical and Clinical Laboratory Technologists and Technicians - \$52,330 • Phlebotomists - \$34,480 • Radiologic and MRI Technologists - \$61,240 • Surgical Technologists - \$47,300 • Veterinarians - \$93,830



CAREER PATHWAYS

**AVIATION MECHANICS
& DRONE CERTIFICATION**



**NEW STARTING
2021-22
SCHOOL YEAR!**

STATE TESTING NURSING ASSISTANT

ACCOUNTING

ADMINISTRATIVE SUPPORT

ANIMAL SCIENCE

HORTICULTURE

MARKETING

BIOTECHNOLOGY TECHNICIAN

Cincinnati State College in a Partnership with Kenton County Schools

Aircraft Mechanic, Avionics & Drone Pathway (Juniors and Seniors)



Fall 2021	Unmanned Aerial Systems	AMT250
	Aircraft Orientation	AMT105
Spring 2022	Aviation Standard Practices	AMT100
Fall 2022	Avionics 1	AMT271
	Aircraft Weight and Balance	AMT115
Spring 2023	Avionics 2	AMT272
	Aviation Math	MAT122
Spring 2023	OPTION (If student already has CCP Math Credit)	
	Aircraft Welding Processes	AMT130
	Aircraft Non-Metal Structures	AMT120

Three Certifications: UAS Certificate and eligibility to test for FAA Remote Pilot Certificate for Drone
Avionics Certificate and eligibility to test for NCATT Aircraft Electrician Certificate (AET).
AMT General Certificate of Completion for FAA General Airmen Knowledge Test (written test only)

NKY thrives

FEAM Aero sets up new hangar at CVG expected to generate 100 aircraft mechanic jobs

SOAPBOX STAFF | THURSDAY, JANUARY 23, 2020 |

FEAM Aero, which began operations at CVG in July 2015, employs approximately 200 technicians who provide services for DHL, Amazon, and passenger aircraft.

Their latest hangar: \$19 million facility spread out over 103,000 feet is expected to generate **100 aircraft mechanic jobs** and will focus on maintenance, repair, and overhaul work for **747 aircraft**.

According to FEAM managing director Cam Murphy, "As aviation and aircraft maintenance services continue to be in high demand, we're grateful to CVG Airport for understanding the need for our services, and for allowing this hangar to be part of the economic and innovative growth of the airport and state."

Aircraft Mechanic Salary

The average Aircraft Mechanic salary in the United States is **\$73,436** as of February 26, 2020. The range for our most popular Aircraft Mechanic positions typically falls between \$34,759 and \$112,112. Keep in mind that salary ranges can vary widely depending on many important factors; including position, education, certifications, additional skills, and the number of years you have spent in your profession.

STATE TESTED NURSING ASSISTANT (STNA) CERTIFICATION COURSE

What Is the Job Description of a State Tested Nursing Assistant (STNA)?

STNAs are certified nursing assistants. The job of a state tested nursing assistant (STNA) is to assist patients, monitor their health, serve meals, transport them as needed, and otherwise support a physician. People in this job frequently provide a wide range of services, including assisted living care, rehabilitation therapy, home health care, and emotional support. An STNA may be asked to bathe, shave, feed, or dress patients, on top of helping them with the toilet, skin and nail care, and any other day-to-day things they need.

An STNA is a great way to explore and experience the allied health field!
Starting pay for an STNA IS \$12- \$19 an hour.

CLASS OFFERING: (You Must be 16 Years Old)

The STNA Course is one semester at Simon Kenton high school. The class will meet Monday through Friday based on the following schedule:

Simon Kenton High School	9:36 - 10:29 (2nd Period)	Offered 1st or 2nd Semesters
Simon Kenton High School	11:03 - 12:34 (4th Period)	Offered 1st or 2nd Semesters

Four Friday classes will be held at Gateway Community and Technical College (GCTC) to learn the hands-on skills portion of the curriculum. Transportation will be provided for the Friday Skills sessions.

One weekend – Saturday and Sunday – is required to complete 16 hours of clinical experience. Scholars will need to provide their own transportation to the clinical location. Dates of clinical to be provided at first class.

The STNA Certification Test cost of \$115.00 will be paid by the Kenton County School District.

Cost to the Scholar:

Items	Required	Total Cost for Scholars
Scrubs – Galaxy Blue	YES	\$24.80
Background Check	YES	\$34.20
TB Test (May be covered by Insurance)	YES	\$20.00
TOTAL		\$78.00

See your high school counselor to apply!



Simon Kenton - Accounting

The pathway generally prepares individuals to practice the profession of accounting and to perform related business functions. Includes instruction in accounting principles and theory, financial accounting, managerial accounting, cost accounting, budget control, tax accounting, legal aspects of accounting, auditing, reporting procedures, statement analysis, planning & consulting, business information systems, accounting research methods, professional standards and ethics, and applications to specific for-profit, public, and non-profit organizations.

Projected Freshman-Junior Schedule

Denotes Dual-Credit Course OR AP Course

Grade	Track	Career Pathway Elective	English	Math	Science	Social Studies	Other Classes
9th	Traditional	Principles of Marketing	English 1	Algebra 1	Environmental Science	Integrated Social Studies	PE/Health
	Accelerated	Principles of Marketing	Accelerated English 1 or Honors English 1	Accelerated Geometry or Accelerated Algebra 2	Accelerated Environmental Science	AP Government	PE/Health
10th	Traditional	Digital Literacy	English 2	Geometry	Biology	World Civilizations	Spanish 1 or French 1
	Accelerated	Digital Literacy	Accelerated English 2 or Honors English 2	Accelerated Algebra 2 or Accelerated Pre-Calculus	Accelerated Biology	AP European History	Accelerated Spanish 1 or French 1
11th	Traditional	Financial Accounting EOP Required	English 3	Algebra 2 or (Class of 2023+ Personal Finance Business Math)	Concepts of Science	US History	Spanish 2 or French 2
	Accelerated	Financial Accounting EOP Required	Accelerated English 3 or AP LANG & Comp	Accelerated Pre-Calculus OR AP Calculus AB	Accelerated Chemistry	Accelerated US History or AP US History	Accelerated Spanish 2 or French 2
12th	Traditional	Advanced Computers	English 4 or ENG 100 & 120	CCR Math or AP Accounting	Optional Elective	Optional Elective	Humanities or Art Elective
	Accelerated	Advanced Computers	Accelerated English 4 or AP Lit & Lang or ENG 100 & 120	AP Accounting	Optional Elective	Optional Elective	Humanities or Art Elective

Industry Certifications offered: Accounting (KDE End of Course (EOP) Required), A.S.K. (Assessment of Skills and Knowledge of Business): Concepts of Finance with 3 Microsoft Office Specialist (MOS) certifications: Word, Excel, PowerPoint, Access, or Outlook

Accounting future careers and median salary in the State of Kentucky: Administrative Assistant - \$33,359 • Office Manager - \$49,593 • Customer Service Assistant - \$29,300 • Data Entry Specialist - \$28,140 • Receptionist - \$25,840 • Stenographer - \$28,760 • Dispatcher - \$36,397 • Shipping & Receiving Assistant - \$30,330 • Medical Transcriptionist - \$32,750 • Legal Secretary - \$32,810 • Paralegal - \$43,810 • Billing and Account Collector - \$32,860 • Accountant - \$59,250 • Bookkeeper - \$35,810 • Auditor - \$59,250

Simon Kenton - Administrative Support

This pathway is designed to provide scholars an advanced level experience that will propel them into the 21st century business world as they serve in positions such as college interns, administrative assistants, graduate assistants, and office managers. Instruction includes areas of fundamental business procedures, human resource management, time management software, workstation management, travel planning, financial reporting, payroll, mail procedures, effective communication skills, and ethical decision-making skills.

Projected Freshman-Junior Schedule

Denotes Dual-Credit Course OR AP Course

Grade	Track	Career Pathway Elective	English	Math	Science	Social Studies	Other Classes
9th	Traditional	Principles of Marketing	English 1	Algebra 1	Environmental Science	Integrated Social Studies	PE/Health
	Accelerated	Principles of Marketing	Accelerated English 1 or Honors English 1	Accelerated Geometry or Accelerated Algebra 2	Accelerated Environmental Science	AP Government	PE/Health
10th	Traditional	Digital Literacy	English 2	Geometry	Biology	World Civilizations	Spanish 1 or French 1
	Accelerated	Digital Literacy	Accelerated English 2 or Honors English 2	Accelerated Algebra 2 or Accelerated Pre-Calculus	Accelerated Biology	AP European History	Accelerated Spanish 1 or French 1
11th	Traditional	Financial Accounting or Workplace Readiness EOP Required	English 3	Algebra 2 or (Class of 2023+ Personal Finance Business Math)	Concepts of Science	US History	Spanish 2 or French 2
	Accelerated	Financial Accounting or Workplace Readiness EOP Required	Accelerated English 3 or AP LANG & Comp	Accelerated Pre-Calculus or AP Calculus AB	Accelerated Chemistry	Accelerated US History or AP US History	Accelerated Spanish 2 or French 2
12th	Traditional	Advanced Computers	English 4 or ENG 100 & 120	CCR Math or AP Accounting	Optional Elective	Optional Elective	Humanities or Art Elective
	Accelerated	Advanced Computers	Accelerated English 4 or AP Lit & Lang or ENG 100 & 120	AP Accounting	Optional Elective	Optional Elective	Humanities or Art Elective

Industry Certifications offered: Administrative Support Services (KDE End of Course (EOP) Required), A.S.K. (Assessment of Skills and Knowledge of Business); Fundamental Business Concepts with 3 Microsoft Office Specialist (MOS) certifications: Word, Excel, PowerPoint, Access, or Outlook

Administrative Support future careers and median salary in the State of Kentucky: Administrative Assistant - \$33,359 • Office Manager - \$49,593 • Customer Service Assistant - \$29,300 • Data Entry Specialist - \$28,140 • Receptionist - \$25,840 • Stenographer - \$28,760 • Dispatcher - \$36,397 • Shipping & Receiving Assistant - \$30,330 • Medical Transcriptionist - \$32,750 • Legal Secretary - \$32,810 • Paralegal - \$43,810 • Billing and Account Collector - \$32,860 • Accountant - \$59,250 • Bookkeeper - \$35,810 • Auditor - \$59,250

Simon Kenton - Animal Science

This pathway focuses on the scientific principles that underlie the breeding, care and management of agricultural animals, and the production, processing, and distribution of agricultural animal products. This includes developing better, more efficient ways of producing and processing meat, poultry, eggs and dairy products, as well as studying genetics, nutrition, reproduction, growth and development of animals.

Projected Freshman-Junior Schedule

Denotes Dual-Credit Course OR AP Course

Grade	Track	Career Pathway Elective	English	Math	Science	Social Studies	Other Classes
9th	Traditional	Principles of Agricultural Science & Technology	English 1	Algebra 1	Environmental Science	Integrated Social Studies	PE/Health
	Accelerated	Principles of Agricultural Science & Technology	Accelerated English 1 or Honors English 1	Accelerated Geometry or Accelerated Algebra 2	Accelerated Environmental Science	AP Government	PE/Health
10th	Traditional	Agriscience	English 2	Geometry	Biology	World Civilizations	Spanish 1 or French 1
	Accelerated	Agriscience	Accelerated English 2 or Honors English 2	Accelerated Algebra 2 or Accelerated Pre-Calculus	Accelerated Biology	World Civilizations Accelerated or AP European History	Accelerated Spanish 1 or French 1
11th	Traditional	Agribusiness or Animal Science (Classes rotate yearly) EOP Required	English 3	Algebra 2 or (Class of 2023+ Agriculture Math)	Concepts of Science	US History	Spanish 2 or French 2
	Accelerated	Agribusiness or Animal Science (Classes rotate yearly) EOP Required	Accelerated English 3 or AP LANG & Comp	Accelerated Pre-Calculus	Accelerated Chemistry	US History or AP US History	Accelerated Spanish 2 or French 2
12th	Traditional	Agribusiness or Animal Science (Classes rotate yearly)*	English 4 or ENG 100 & 120	CCR Math	Science Elective	Psychology or PSY 100	Humanities or Art Elective
	Accelerated	Agribusiness or Animal Science (Classes rotate yearly)*	Accelerated English 4 or AP Lit & Lang or ENG 100 & 120	AP Calculus AB or Dual Credit math	Science Elective	Psychology or PSY 100	Humanities or Art Elective

Industry Certifications offered: Animal Science Systems (KDE End of Course (EOP) Required) and iCEV Elanco Fundamentals of Animal Science OR iCEV Elanco Veterinary Medical Applications

Animal Science future careers and median salary in the State of Kentucky: Veterinarian- \$79,250 • Veterinarian Technician - \$26,779 • Animal Trainer - \$24,750 • Zookeeper - \$22,430 • Zoologist - \$55,600 • Wildlife Technician - \$42,690 • Animal Services Worker - \$27,030 • Pet Groomer - \$22,430 • Biologist - \$72,360 • Butcher - \$28,610

Simon Kenton - Horticulture & Plant Science

This pathway focuses on the scientific principles that underlie the breeding, cultivation, and production of agricultural plants, and the production, processing, and distribution of agricultural plant products. Includes instruction in the plant sciences, crop cultivation/production, & food products.

Projected Freshman-Junior Schedule

Denotes Dual-Credit Course OR AP Course

Grade	Track	Career Pathway Elective	English	Math	Science	Social Studies	Other Classes
9th	Traditional	Principles of Agricultural Science & Technology	English 1	Algebra 1	Environmental Science	Integrated Social Studies	PE/Health
	Accelerated	Principles of Agricultural Science & Technology	Accelerated English 1 or Honors English 1	Accelerated Geometry or Accelerated Algebra 2	Accelerated Environmental Science	AP Government	PE/Health
10th	Traditional	Agriscience	English 2	Geometry	Biology	World Civilizations	Spanish 1 or French 1
	Accelerated	Agriscience	Accelerated English 2 or Honors English 2	Accelerated Algebra 2 or Accelerated Pre-Calculus	Accelerated Biology	Accelerated World Civilizations or AP European History	Accelerated Spanish 1 or French 1
11th	Traditional	Floral Design or Greenhouse Technology (Classes rotate yearly) EOP Required	English 3	Algebra 2 or (Class of 2023+ Agriculture Math)	Concepts of Science	US History	Spanish 2 or French 2
	Accelerated	Floral Design or Greenhouse Technology (Classes rotate yearly) EOP Required	Accelerated English 3 or AP LANG & Comp	Accelerated Pre-Calculus	Accelerated Chemistry	Accelerated US History or AP US History	Accelerated Spanish 2 or French 2
12th	Traditional	Floral Design or Greenhouse Technology (Classes rotate yearly)	English 4 or ENG 100 & 120	CCR Math	Science Elective	Psychology or PSY 100	Humanities or Art Elective
	Accelerated	Floral Design or Greenhouse Technology (Classes rotate yearly)	Accelerated English 4 or AP Lit & Lang or ENG 100 & 120	AP Calculus AB or Dual Credit Math	Science Elective	Psychology or PSY 100	Humanities or Art Elective

Industry Certifications offered: Horticulture and Plant Science Systems (KDE End of Course (EOP) Required) and iCEV Bayer Crop and Plant Science

Horticulture and Plant Science careers and median salary in the State of Kentucky: Horticulturist - \$23,960 • Landscape Architect - \$61,320 • Botanist - \$60,430 • Landscaper - \$27,521 • Florist - \$23,380 • Farmer - \$87,080 • Nursery/Greenhouse Grower - \$23,960 • Agricultural Technician - \$39,830 • Biotechnologist - \$42,690 • Agronomist - \$60,430 • Forest Conservation Officer - \$46,990 • Agricultural Educator - \$55,964 • Arborist - \$32,270 • Aquaculturist - \$87,080 • Food Scientist - \$60,530 • Agricultural Engineer - \$68,200

Simon Kenton - Marketing

This pathway generally prepares individuals to undertake and manage the process of developing consumer audiences and moving products from producers to consumers. Includes instruction in buyer behavior dynamics, principle of marketing research, demand analysis, cost-volume and profit relationships, pricing theory, marketing campaign and strategic planning, market segments, advertising methods, sales operations and management, consumer relations, retailing, and applications to specific products and markets.

Projected Freshman-Junior Schedule

Denotes Dual-Credit Course OR AP Course

Grade	Track	Career Pathway Elective	English	Math	Science	Social Studies	Other Classes
9th	Traditional	Principles of Marketing	English 1	Algebra 1	Environmental Science	Integrated Social Studies	PE/Health
	Accelerated	Principles of Marketing	Accelerated English 1 or Honors English 1	Accelerated Geometry or Accelerated Algebra 2	Accelerated Environmental Science	AP Government	PE/Health
10th	Traditional	Digital Literacy	English 2	Geometry	Biology	World Civilizations	Spanish 1 or French 1
	Accelerated	Digital Literacy	Accelerated English 2 or Honors English 2	Accelerated Algebra 2 or Accelerated Pre-Calculus	Accelerated Biology	Accelerated World Civilizations or AP European History	Accelerated Spanish 1 or French 1
11th	Traditional	Financial Accounting EOP Required	English 3	Algebra 2 or (Class of 2023+ Personal Finance Business Math)	Concepts of Science	US History	Spanish 2 or French 2
	Accelerated	Financial Accounting EOP Required	Accelerated English 3 or AP LANG & Comp	Accelerated Pre-Calculus OR AP Calculus AB	Accelerated Chemistry	Accelerated US History or AP US History	Accelerated Spanish 2 or French 2
12th	Traditional	Advanced Marketing or Pioneer Pride Shop	English 4 or ENG 100 & 120	CCR Math or AP Accounting	Optional Elective	Optional Elective	Humanities or Art Elective
	Accelerated	Advanced Marketing or Pioneer Pride Shop	Accelerated English 4 or AP Lit & Lang or ENG 100 & 120	AP Accounting	Optional Elective	Optional Elective	Humanities or Art Elective

Additional Career Pathway Electives: Sports & Entertainment Marketing - Travel & Tourism Marketing

Industry Certifications offered: Marketing (KDE End of Course (EOP) Required), A.S.K. (Assessment of Skills and Knowledge of Business): Fundamental Marketing Concepts

Simon Kenton - Biotechnology Technician

This course is designed to provide the knowledge and basic training to prepare scholars for entry-level biotechnical work as well as support to obtain a Biotechnician Certificate and get a basic knowledge of concepts to prepare for further education in the field should they choose to do so. Course content will include medication review, aseptic techniques, calculations, and pharmacy operations. Upon successful completion of this course and an internship at a local pharmacy, scholars may be eligible to take the Pharmacy Technician Certification.

Projected Freshman-Junior Schedule

Denotes Dual-Credit Course OR AP Course

Grade	Track	Career Pathway Elective	English	Math	Science	Social Studies	Other Classes
9th	Traditional		English 1	Algebra 1	Environmental Science	Integrated Social Studies	PE/Health Spanish 1 or French 1
	Accelerated		Accelerated English 1 or Honors English 1	Accelerated Geometry or Accelerated Algebra 2	Accelerated Environmental Science	AP Government	PE/Health Spanish 1 or French 1
10th	Traditional		English 2	Geometry	Biology	World Civilizations	Spanish 2 or French 2
	Accelerated		Accelerated English 2 or Honors English 2	Accelerated Algebra 2 or Accelerated Pre-Calculus	Accelerated Biology	AP European History	Accelerated Spanish 2 or French 2
11th	Traditional	Digital Literacy	English 3	Algebra 2	Concepts of Science	US History	Spanish 3 or French 3
	Accelerated	Digital Literacy	Accelerated English 3 or AP LANG & Comp	Accelerated Pre-Calculus OR AP Calculus AB	Accelerated Chemistry	Accelerated US History AP US History	Accelerated Spanish 3 or French 3
12th	Traditional	Human Genetics & Biotechnology*	English 4 or ENG 100 & 120	CCR Math or MAT 115	Infectious Diseases & Microbiology	Optional Elective	AP Spanish 4 or AP French 4
	Accelerated	Human Genetics & Biotechnology*	Accelerated English 4 or AP Lit & Lang or ENG 100 & 120	AP Calculus AB or BC or AP Statistics or Dual Credit Math	AP Biology/ AP Chemistry/ Dual Credit Science	AP Psychology or PSY 100	AP Spanish 4 or AP French 4

Industry Certifications Offered: * Biotechnology Technician (NOCTI)

Biotechnical Careers in the State of Kentucky: Basic Biotechnician - \$34,000 • Biotechnology Lab Assistant - \$40,000
• Environmental Biotechnician - \$40,000 - \$60,000



MIDDLE SCHOOLS

CAREER EDUCATION

SUMMIT VIEW ACADEMY
TURKEYFOOT
TWHENHOFEL
WOODLAND

SUMMIT VIEW ACADEMY (MIDDLE)

Course/Class Name (PLTW, STEAM, etc.)	Grade	Course Description	High Demand Area (Logistics, Business/IT, Manufacturing, Construction, Health Science)
STEAM Lab	6-8	Scholar interest in areas of STEAM careers have a variety of platforms to choose from and experience. The Lab consists of nine stations of Engineering, Digital Design, and Innovation. Scholars also receive training in 3D design and printing.	All Areas
Project Lead the Way Engineering	6-8	6th Grade-Magic of Electrons 7th Grade-Design & Modeling 8th Grade-Automation & Robotics	All Areas
Project Lead the Way Computer Science	6-8	6th Grade-CodeHS 7th Grade-Innovation & Makers 8th Grade-App Creators	Business/IT Logistics
Project Lead the Way Biomedical Sciences	6-8	Medical Detective	Health Science



TURKEYFOOT MIDDLE



Course/Class Name (PLTW, STEAM, etc.)	Grade	Course Description	High Demand Area (Logistics, Business/IT, Manufacturing, Construction, Health Science)
Project Lead The Way	6	Introduction to design and modeling with an emphasis on Health Sciences and Engineering through interactive software and collaborative learning.	Healthcare Construction
Project Lead The Way	7	This class highlights innovation, construction, and app creation with an emphasis in engineering and information technology.	Business/IT Construction
Project Lead The Way	8	This class will focus on automation and robotics with additional emphasis in engineering and information technology.	Business/IT Construction Manufacturing
Study Skills	6	A portion of this class focuses on career exploration with future emphasis on each of the high demand areas.	All Areas
Study Skills	7	A portion of this class focuses on career interest inventory and career clusters with future emphasis on each of the high demand areas.	All Areas
Study Skills	8	This class is dedicated to preparing scholars for their future transitions. Aspects of this class focus on career interest inventory and exploration, college/technical school exploration and the factors that contribute to choosing the best choice for each scholar. Other college and career aspects of this class involve ACT Practice and the ASVAB exam.	All Areas
Global Issues	6	A portion of this class is dedicated to college and career research which include verbal and visual scholar presentations and gallery walk.	All Areas
Practical Living	7	A portion of this class focuses on career inventory, career research and the employment process including filling out an application, creating a resume, applying, and interviewing for potential positions.	All Areas
Practical Living	8	A portion of this class focuses on career clusters and exploration with additional focus on employability skills and educational requirements for careers.	All Areas

TWENHOFEL MIDDLE



Course/Class Name (PLTW, STEAM, etc.)	Grade	Course Description	High Demand Area (Logistics, Business/IT, Manufacturing, Construction, Health Science)
Career Skills Class	6-8	Career paths, public relations, job applications and interviews are covered. Class will include research-based projects, collaborative activities, and guest speakers. They will gain an understanding of what they need to do now, in high school, and in their post-secondary lives in order to be qualified candidates for their desired careers.	All Areas
Project Lead the Way	6-8	PLTW is a hands-on, project-based course that incorporates science & math into technology to introduce scholars to the STEM (Science, Technology, Engineering & Math) School of Study. Scholars will study different aspects of design and modeling in modern engineering. They begin learning about and practicing 3-dimensional design.	All Areas
Practical Living	6-8	Scholars explore all areas of everyday living. They investigate decision making and the consequences that come with the decisions that we make. Problem solving and conflict resolution along with mediation skills are practiced.	All Areas
Health Class	6-8	Scholars will learn about general body health as well as living healthy. They will focus on nutrition and what their body needs to function on a daily basis. They will also focus on a drug awareness program to help scholars understand the effects of drugs and alcohol use to the body. Our hope is to improve the lifestyles our scholars have in the future and to instill them with the knowledge they need to make lifelong healthier choices.	Health Science
Intro to Engineering	6-8	This class introduces scholars to the basic principles of engineering. Scholars will be exposed to a variety of STEM topics that they will explore in both instruction and research-based projects.	Manufacturing Construction Logistics
STEM	6-8	This class introduces scholars to career skills and careers in Science, Technology, Engineering, and Math.	Manufacturing Construction Logistics

WOODLAND MIDDLE



Course/Class Name (PLTW, STEAM, etc.)	Grade	Course Description	High Demand Area (Logistics, Business/IT, Manufacturing, Construction, Health Science)
STEM and Intro to Engineering	6-7	These are introductions to career skills and careers in Science, Technology Engineering and Math.	Manufacturing Construction Logistics
Project Lead The Way	6-7	Design & Modeling - This is an introduction to design and modeling with an emphasis on Health Sciences and Engineering through interactive software and collaborative learning.	Construction Health Science
Project Lead The Way	6-7	Computer Science for Innovators and Makers - This class is an introduction to computer science with an emphasis on physical computing through the design of hardware and software.	Business/IT Construction
Project Lead The Way	7-8	Automation & Robotics - This class will focus on automation and robotics with additional emphasis in engineering and information technology.	Business/IT Construction Manufacturing
Project Lead The Way	7-8	App Creators - This class focuses on computer science as it interacts with users and to solve problems and handle data.	Business/IT
Project Lead The Way	7-8	Medical Detectives - This class introduces skills and careers associated with healthcare and bioengineering.	Health Science
Project Lead The Way	7-8	Magic of Electrons - This class focuses on electricity and it's uses including basic wiring and electronic circuitry.	Business/IT Construction
Study Skills	6	A portion of this class focuses on career exploration with future emphasis on each of the high demand areas.	All Areas
Study Skills	7	A portion of this class focuses on career interest inventory and career clusters with future emphasis on each of the high demand areas.	All Areas
Study Skills	8	This class is dedicated to preparing scholars for their future transitions. Aspects of this class focus on career interest inventory and exploration, college/technical school exploration and the factors that contribute to choosing the best choice for each scholar. Other college and career aspects of this class involve ACT Practice and the ASVAB exam.	All Areas



ELEMENTARY SCHOOLS

CAREER EDUCATION

BEECHGROVE
FT. WRIGHT
J.A. CAYWOOD
KENTON
PINER
R.C. HINSDALE
RIVER RIDGE
RYLAND HEIGHTS
SUMMIT VIEW ACADEMY
TAYLOR MILL
WHITES TOWER

BEECHGROVE ELEMENTARY

Course/Class Name (PLTW, STEAM, etc.)	Grade	Course Description and Activities	High Demand Area (Logistics, Business/IT, Manufacturing, Construction, Health Science)
Project Lead the Way	Pre-K	PreK: Healthy Habits -	Healthy Care & Logistics
Project Lead the Way	K	K: Spatial Sense and Coding K: Healthy Habits Activities: Kodable.com	Business/IT Manufacturing Health Care Logistics
Project Lead the Way	1	1: Spatial Sense and Coding 1: Healthy Habits Activities: Kodable.com and Daisy Dinosaur	Business/IT Manufacturing Health Care Logistics
Project Lead the Way	2	2: Grids & Games 2: Living Things: Diversity of Life Activities: Code.org and Course C-F	Business/IT Manufacturing Logistics
Project Lead the Way	3	3: Grids and Games 3: Living Things: Diversity of Life Activities: Code.org and Course C-F	Business/IT Manufacturing Logistics
Project Lead the Way	4	4: Infection: Detection 4: Organisms: Structure & Function Activities: Code.org and Course C-F	Health Science Business/IT Manufacturing Logistics
Project Lead the Way	5	5: Infection - Detection 5: Infection - Modeling & Simulation Activities: Code.org and Course C-F 5: Robotics and Automation	Health Science Construction Business/IT Manufacturing



FT. WRIGHT ELEMENTARY

Course/Class Name (PLTW, STEAM, etc.)	Grade	Course Description	High Demand Area (Logistics, Business/IT, Manufacturing, Construction, Health Science)
Project Lead the Way	K	K: Pushes & Pulls	Logistics Business/IT Manufacturing
Project Lead the Way	1	1: Light – Observing the Sun, Moon, & Stars	Health Science
Project Lead the Way	2	2: Materials Science – Form & Function	Health Science Business/IT Manufacturing
Project Lead the Way	3	3: Stability in Motion – Forces & Interactions	Logistics Construction Business/IT Manufacturing
Project Lead the Way	4	4: Energy – Conversion	Business/IT Manufacturing
Project Lead the Way	5	5: Robotics & Automation – Challenge	Construction Business/IT Manufacturing



J.A. CAYWOOD ELEMENTARY



Course/Class Name (PLTW, STEAM, etc.)	Grade	Course Description	High Demand Area (Logistics, Business/IT, Manufacturing, Construction, Health Science)
Project Lead the Way	K	<p>K.3 Structure and Function: Human Body: Scholars learn about the different jobs that help take care of our bodies. Doctors, nurses, medical techs.</p> <p>K.1 Exploring Design: Scholars Build 3 different houses with 3 different materials and test to see which withstands the wind. Discuss architects and builders.</p>	<p>Health Science</p> <p>Construction</p>
Project Lead the Way	1	1.4 Light observing Sun, Stars, and Moon: Scholars design a playground with shaded areas to protect us from the harmful UV rays. They learned about how Engineers design blueprints of their ideas. Then we learned how construction workers build the designs with certain criteria and constraints.	Manufacturing Construction
Project Lead the Way	2	2.4 Grids and Games: Scholars Learn about different computer science jobs and explore all jobs that use technology. We then go into depth about computer programmers as they turn into one when they create their own game.	Business/IT
Project Lead the Way	3	3.1 Science of Flight: Scholars learn extension all the different jobs at the CVG airport. Safety and security, ground transportation, airlines, Terminal operations, and concessions. In teams they select one job category of jobs. They solved one problem that that career faces.	Logistics Business/IT
Project Lead the Way	4	<p>4.1 Collision: Scholars design a safety restraint for a vehicle to keep passengers safe. They build background knowledge on how the first cars were built by engineers. Then they looked at the development of safety restraints and systems designed in cars overtime.</p> <p>4.3 Input/output Computer systems: Scholars learn about how doctors test for concussions. That leads them into learning about how computer scientists develop computerized tests that doctors can use to test the patient's reaction time.</p>	<p>Manufacturing</p> <p>Health science Business/IT</p>
Project Lead the Way	5	<p>5.1 Infection Detection: Scholars navigate through how diseases are spread and how medical scientists find patient zero in a "like real" simulation. They learn about different career paths in the medical field; disease management professionals, medical researchers, and medical scientists.</p> <p>5.3 Robotics and automations</p>	<p>Health science</p> <p>Manufacturing</p>
STEAM	5	3D printing solving real world problems	Manufacturing

KENTON ELEMENTARY



Course/Class Name (PLTW, STEAM, etc.)	Grade	Course Description	High Demand Area (Logistics, Business/IT, Manufacturing, Construction, Health Science)
Project Lead the Way	K	Pushes and Pulls Animals and Algorithms (Coding)	Business/IT Health Science
Project Lead the Way	1	Pushes and Pulls Animals and Algorithms (Coding)	Business/IT Health Science
Project Lead the Way	2	The Changing Earth Matter	Health Science
Project Lead the Way	3	The Changing Earth Matter	Health Science
Project Lead the Way	4	Energy: Collisions Energy: Conversion	Business/IT Manufacturing
Project Lead the Way	5	Energy: Collisions Energy: Conversion	Business/IT Manufacturing

PINER ELEMENTARY



Course/Class Name (PLTW, STEAM, etc.)	Grade	Course Description	High Demand Area (Logistics, Business/IT, Manufacturing, Construction, Health Science)
Project Lead the Way	K	<p>Spatial Sense and Coding: Scholars explore directional words and begin coding knowledge</p> <p>Engineering: Scholars use principles of engineering design in creation of tools, application and evaluation.</p>	<p>Business/IT Logistics</p> <p>Construction</p>
Project Lead the Way	1	Animals and Algorithms: scholar develop design for simple algorithms, learn basic animal habitat	Business/IT Health Science
Project Lead the Way	2	Animated Storytelling: Scholars create digital animated stories on a device	Business/IT
Project Lead the Way	3	Grids and Games: Scholars build knowledge and skill to develop a digital game	Business/IT
Project Lead the Way	4	Programming Patterns: Scholars create digital interactive stories using various outlets	Business/IT Manufacturing
Project Lead the Way	5	<p>Robotics and Automation: Explore Robotics history and types of Robots, build a basic robot.</p> <p>3D Printing: Scholars learn Tinkercad, coding, and CAD 3D engineering software to create original designs which are manufactured in the lab.</p> <p>Engineering: Scholars use principles of physics and principles of engineering design to create 3D structures.</p>	<p>All Areas</p> <p>Business/IT Manufacturing</p> <p>Construction</p>
PLTW	K-5	Adding Kits and lessons to our library of PLTW to enhance Career Exploration.	All Areas
STEAM	K-5	Challenge Cards to Design/Develop/Modify based on stories presented: Stories are based on current events and relevant issues for scholars. Also, 3-D Print options	All Areas

R.C. HINSDALE ELEMENTARY



Course/Class Name (PLTW, STEAM, etc.)	Grade	Course Description	High Demand Area (Logistics, Business/IT, Manufacturing, Construction, Health Science)
Project Lead the Way	K	K: Structure and Function - Human Body Scholars learned about body systems and learned about how doctors figure out what a patient needs help with. K: Animals & Algorithms Scholars learned about the needs of living things, and then designed and illustrated needs of animals using Scratch, Jr.	Health Science Business/IT
Project Lead the Way	1	1: Animated Storytelling - Scholars learned about programming in Scratch Jr, and then created a story using that program. 1: Light - Observing the Sun, Moon, & Stars. learning about heavenly bodies in the sky.	Business/IT
Project Lead the Way	2	2: Grids & Games - Scholars learned about programming in Scratch Jr, and then created a video game using that program. 2: Materials Science - Properties of Matter Scholars learned about the different states of matter, and different qualities of matter.	Business/IT
Project Lead the Way	3	3: Programming Patterns - Scholars learned about programming concepts and programming animation in Scratch. 3: Stability in Motion - Forces & Interactions Scholars learned about the Design Process, and both Simple and Complex Machines. Scholars design and create a complex machine to solve a problem of a misplaced zoo animal.	Business/IT Construction
Project Lead the Way	4	3: Programming Patterns - Scholars learned about programming concepts and programming animation in Scratch. 3: Stability in Motion - Forces & Interactions Scholars learned about the Design Process, and both Simple and Complex Machines. Scholars had to design and create a complex machine to solve a problem with a misplaced zoo animal.	Business/IT Construction
Project Lead the Way	5	3: Programming Patterns - Scholars learned about programming concepts and programming animation in Scratch. Scholars used Scratch to design and create a story with multiple endings. 3: Stability in Motion - Forces & Interactions Scholars learned about the Design Process, and both Simple and Complex Machines.	Business/IT Construction
Project Lead the Way	3-5	Scholars use the design process to create animations and build machines	Business/IT Construction

RIVER RIDGE ELEMENTARY



Course/Class Name (PLTW, STEAM, etc.)	Grade	Course Description	High Demand Area (Logistics, Business/IT, Manufacturing, Construction, Health Science)
Project Lead the Way	K	K: Structure and Function - Human Body K: Animals & Algorithms K: Structure & Function – Exploring Design K: Pushes & Pulls	Health Science Business/IT Manufacturing
Project Lead the Way	1	1: Animal Adaptations 1: Animated Storytelling 1: Light & Sound 1: Light – Observing the Sun, Moon, & Stars	Health Science Business/IT Manufacturing
Project Lead the Way	2	2: Grids & Games 2: Materials Science – Properties of Matter 2: Materials Science – Form & Function	Business/IT Manufacturing
Project Lead the Way	3	3: Programming Patterns 3: Stability in Motion – Science of Flight 3: Stability in Motion – Forces & Interactions	Business/IT Manufacturing
Project Lead the Way	4	4: Input/Output – Computer Systems 4: Energy – Collisions 4: Energy – Conversion	Business/IT Manufacturing
Project Lead the Way	5	5: Infection – Detection 5: Infection - Modeling & Simulation 5: Robotics & Automation 5: Robotics & Automation – Challenge	Health Science Business/IT Manufacturing
Project Lead the Way	3-5	Manufacturing simulations Scholars learn about advanced manufacturing through various simulation activities	Manufacturing Business/IT

RYLAND HEIGHTS ELEMENTARY



Course/Class Name (PLTW, STEAM, etc.)	Grade	Course Description	High Demand Area (Logistics, Business/IT, Manufacturing, Construction, Health Science)
Project Lead the Way	K	K: Animals & Algorithms K: Pushes & Pulls	Logistics Business/IT Construction
Project Lead the Way	1	K: Pushes and Pulls 1: Animated Storytelling 1: Light & Sound	Construction Logistics Business/IT
Project Lead the Way	2	2: Grids & Games 2: Materials Science – Properties of Matter	Business/IT Construction Manufacturing
Project Lead the Way	3	3: Programming Patterns 3: Stability in Motion – Science of Flight	Business/IT Logistics
Project Lead the Way 4th grade science	4	3: Programming Pattern 3: Stability in Motion – Forces & Interactions 4: Input/Output – Human Brain	All Areas
Project Lead the Way	5	5: Infection – Detection 5: Robotics & Automation	Health Science Manufacturing

SUMMIT VIEW ACADEMY (ELEMENTARY)



Course/Class Name (PLTW, STEAM, etc.)	Grade	Course Description	High Demand Area (Logistics, Business/IT, Manufacturing, Construction, Health Science)
Project Lead the Way	K	<p>K.3 Structure and Function: Human Body: Scholars learn about the different jobs that help take care of our bodies. Doctors, nurses, medical techs.</p> <p>K.4 Animals and Algorithms: Develop the ability to design simple algorithms and implement them digitally on a device. Scholars explore the sequential nature of computer programs through hands-on activities, both with and without a computer. Applying skills and knowledge learned from activities in this module, scholars work in small groups to design and program a simple digital animation about an animal in its habitat.</p>	<p>Health Science</p> <p>Business/IT</p>
Project Lead the Way STEAM	1	<p>1.4 Animated Storytelling: develop the ability to create digital animated stories on a tablet.</p> <p>Scholars will explore the sequential nature of computer programs through hands-on activities both with and without a computer. Applying skills and knowledge learned from activities in this module, scholars will work in pairs to design and program a simple digital animated story that interacts with the reader.</p> <p>Build a wall using different materials and test to see if Humpty Dumpty can sit on it safely without falling off. Discuss architects and builders.</p>	<p>Business/IT</p> <p>Construction</p>
STEAM STEAM Project Lead the Way	2	<p>Scholars will design a new Summit View logo for a new school t-shirt. Scholars will design a new logo on a budget (money, purchase). Scholars will design a mobile product (balloon Lego car, catapult) to deliver their shirt designs to Mrs. Smith in a fast and safe way. Standard: ISTE 4A.</p> <p>Build 3 different houses with 3 different materials and test to see which withstands the wind. Discuss architects and builders.</p> <p>2.4 Grids and Games: Learn about different computer science jobs and explore all jobs that use technology. We then go into depth about computer programmers as they turn into one when they create their own game.</p>	<p>Business/IT Construction</p> <p>Construction</p> <p>Business/IT</p>

SUMMIT VIEW ACADEMY (ELEMENTARY)



Course/Class Name (PLTW, STEAM, etc.)	Grade	Course Description	High Demand Area (Logistics, Business/IT, Manufacturing, Construction, Health Science)
Project Lead the Way	3	3.2 Stability and Motion: Forces and Interactions: Scholars will explore simple machines, compound machines, and a variety of forces Scholars will apply their knowledge of machines and forces to construct a device to rescue zoo animals.	Construction
Project Lead the Way	3	3.4 Programming Patterns: Create digital interactive stories using events, loops, and conditional statements. Through hands-on activities both with and without a computer, scholars explore the sequential nature of computer programs. Applying skills and knowledge learned from the activities and project, scholars work together to design and program a digital interactive story with multiple plot lines.	Business/IT
STEAM	4	Scholars will design a solution for a local Real Estate business. Scholars will use the design process to create a solution, Scholars will produce a business plan to present their solution to the owner of the Real Estate business.	Business/IT
Project Lead the Way		4.3 Input/output Computer systems: Scholars learn about how doctors test for concussions. That leads us into learning about how computer scientists develop computerized tests that doctors can use to test the patient's reaction time.	Business/IT
Project Lead the Way	5	5.1 Infection Detection: Scholars navigate through how diseases are spread and how medical scientists find patient zero in a "like real" simulation. They learn about different career paths in the medical field; like disease management professionals, medical researchers, and medical scientists.	Health Science
		5.3 Robotics and automations	Construction Manufacturing Business/IT
		4.3 Input/output Computer systems: Scholars learn about how doctors test for concussions. That leads us into learning about how computer scientists develop computerized tests that doctors can use to test the patient's reaction time.	

TAYLOR MILL ELEMENTARY



Course/Class Name (PLTW, STEAM, etc.)	Grade	Course Description	High Demand Area (Logistics, Business/IT, Manufacturing, Construction, Health Science)
Project Lead the Way	K	K: Animals & Algorithms K: Pushes & Pulls	Logistics, Business/IT Construction
Project Lead the Way	1	K: Pushes and Pulls 1: Animated Storytelling 1: Light & Sound	Construction Logistics Business/IT
Project Lead the Way	2	2: Grids & Games 2: Materials Science – Properties of Matter	Business/IT Construction Manufacturing
Project Lead the Way	3	3: Programming Patterns 3: Stability in Motion – Science of Flight	Business/IT Logistics
Project Lead the Way 4th grade science	4	3: Programming Pattern 3: Stability in Motion – Forces & Interactions 4: Input/Output – Human Brain	Business/IT Manufacturing Construction Health Science Logistics
Project Lead the Way	5	5: Infection – Detection 5: Robotics & Automation	Health Science Manufacturing
Innovations	K-5	Coding Activities	Logistics Business/IT Manufacturing
Genius Hub	K-5	Maker Space Activities	Logistics Business/IT Manufacturing

WHITES TOWER ELEMENTARY



Course/Class Name (PLTW, STEAM, etc)	Grade	Course Description	High Demand Area (Logistics, Business/IT, Manufacturing, Construction, Health Science)
Project Lead the Way	K	K: Animals & Algorithms K: Pushes & Pulls	Logistics Business/IT Construction
Project Lead the Way	1	K: Pushes and Pulls 1: Animated Storytelling 1: Light & Sound	Construction Logistics Business/IT
Project Lead the Way	2	2: Grids & Games 2: Materials Science – Properties of Matter	Business/IT Construction Manufacturing
Project Lead the Way	3	3: Programming Patterns 3: Stability in Motion – Science of Flight Scholars complete activities about CVG	Business/IT Logistics
Project Lead the Way 4th grade science	4	3: Programming Pattern 3: Stability in Motion – Forces & Interactions 4: Input/Output – Human Brain	Business/IT Manufacturing Construction Health Science Logistics
Project Lead the Way	5	5: Infection – Detection 5: Robotics & Automation	Health Science Manufacturing

Career Information Websites and Links:

1. **Five High Demand Workforce Sectors:** There are numerous career pathways within Kentucky's five high-demand industry sectors. Learn more about the education and experience needed to get jobs in these sectors, the average pay and the projected number of job openings over a five-year period.
<https://educationcabinet.ky.gov/Cabinet-Goals-and-Objectives/Pages/Career-Pathways.aspx>
 1. **Advanced Manufacturing**
 2. **Business and Information Technology**
 3. **Construction**
 4. **Healthcare**
 5. **Transportation & Logistics**
2. In Demand Videos [KET.org/InDemand](https://ket.org/InDemand)
 Kentucky's workforce is ever changing. By the year 2020, it is projected that 63 percent of Kentucky jobs will require some postsecondary education or advanced training to meet workforce demands. Currently, Kentucky is facing a shortage of highly skilled workers to fill the approximately 115,000 open jobs available in the Commonwealth. In Demand is a collection of videos with an accompanying website that provide an overview of careers available in Kentucky's five high-demand sectors: advanced manufacturing, business & IT, construction, healthcare, and transportation & logistics.
3. Salary Information <https://www.salary.com/>
4. CTE, Accountability and Transition Readiness – Industry Certifications, Program of Studies, Dual Credit, Exceptional Work Experience, End of Program Assessments <https://education.ky.gov/CTE/Pages/CTE-St-Acc.aspx>
5. Career and Technical Education Program Areas (Secondary and Postsecondary alignment)
<https://education.ky.gov/CTE/ctepa/Pages/default.aspx>
6. Pathway Standards Documents <https://education.ky.gov/CTE/endofprog/Pages/CTEOPStandardsDocs.aspx>
7. Work-Based Learning <https://education.ky.gov/CTE/cter/Pages/WBL.aspx>
8. Perkins Accountability <https://education.ky.gov/CTE/Pages/Perkins.aspx>
9. Technical Education Database System (TEDS) <https://education.ky.gov/CTE/teds/Pages/default.aspx>
10. Workforce Resources https://www.thinkkentucky.com/Workforce/Workforce_Resources.aspx
11. Careers in Demand <https://www.ket.org/education/careers-in-demand/>
12. Workforce Development in Kentucky Should Encourage High-Road Jobs
<https://kvpolicy.org/workforce-development-kentucky-encourage-high-road-jobs/>
13. The 12 Best Jobs for the Future <https://www.roberthalf.com/blog/job-market/the-12-best-jobs-for-the-future>
14. 10 Great Career Fields for the Future <https://www.moneycrashers.com/5-great-career-fields-for-the-future/>
15. Careers of the Future: 42 Professions of Tomorrow
<https://medium.com/swlh/careers-of-the-future-42-new-professions-of-tomorrow-5d3905f8513>
16. Top 40 Most In-Demand Jobs of the Future <https://shiftpixy.com/2019/06/03/top-40-most-in-demand-jobs-future/>
17. Tomorrow's Workforce: What Scholars Need
https://www.educationworld.com/a_admin/tomorrows-workforce-what-scholars-need.shtml
18. Age-Appropriate Career Education and the Expanded Core Curriculum
<https://www.familyconnect.org/parentsites.aspx?FolderID=13&SectionID=143&TopicID=382&SubTopicID=397&DocumentID=6100&rewrite=0>