



Elev8

Student Learning Centers

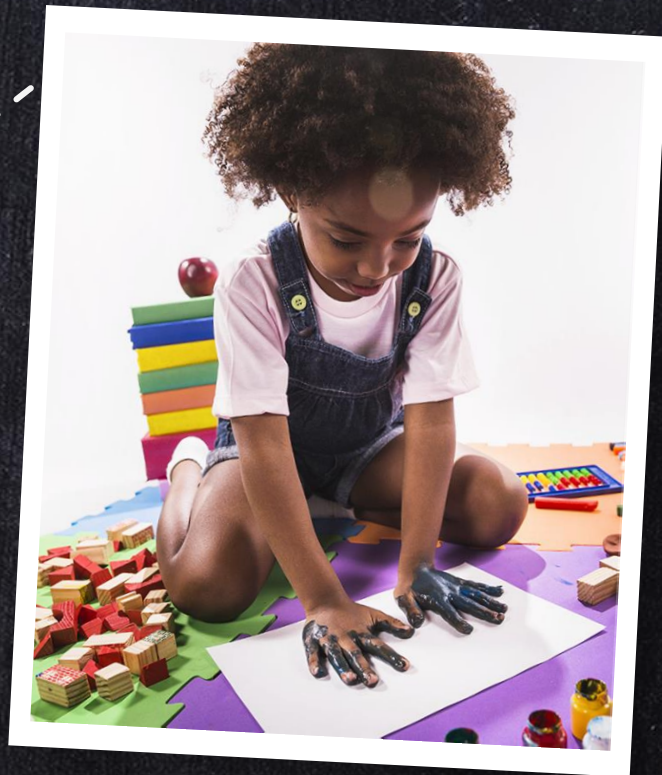


Elev8 Your Mind, Possibilities and Potential



Mission Statement

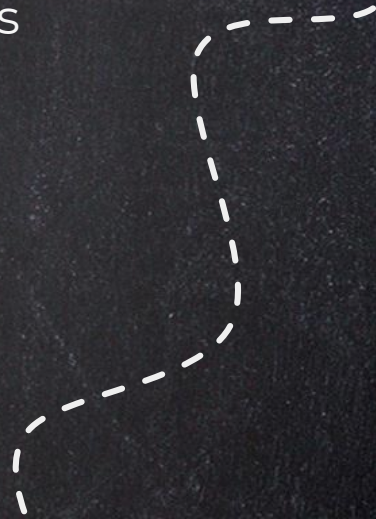
Elev8 Student Learning Centers
prioritize academic success and
create strong ties among families,
students, schools, and
communities.



Elev8 Student Learning Centers



Elev8 Student Learning Centers are an equity strategy: All children and families benefit from access to resources and opportunities that support advanced learning and healthy development. Student Learning Centers address systemic barriers that limit opportunities for students, often based on race and class, ensuring fair access to supports that will prepare them for future success.



Locations



West Louisville

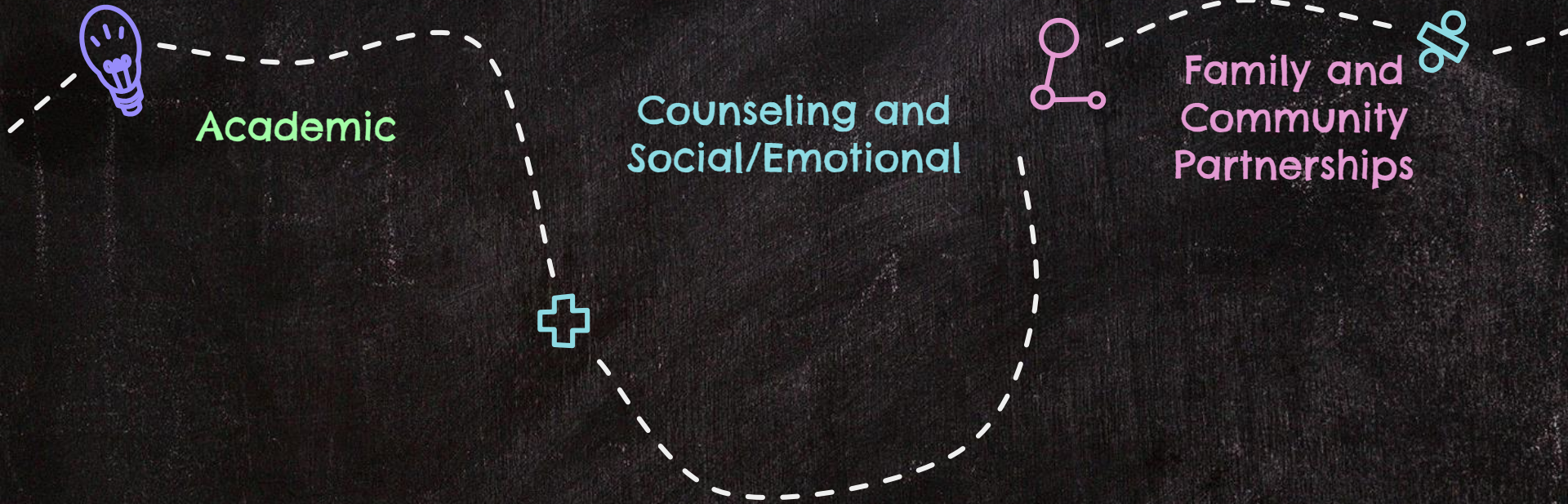


Newburg



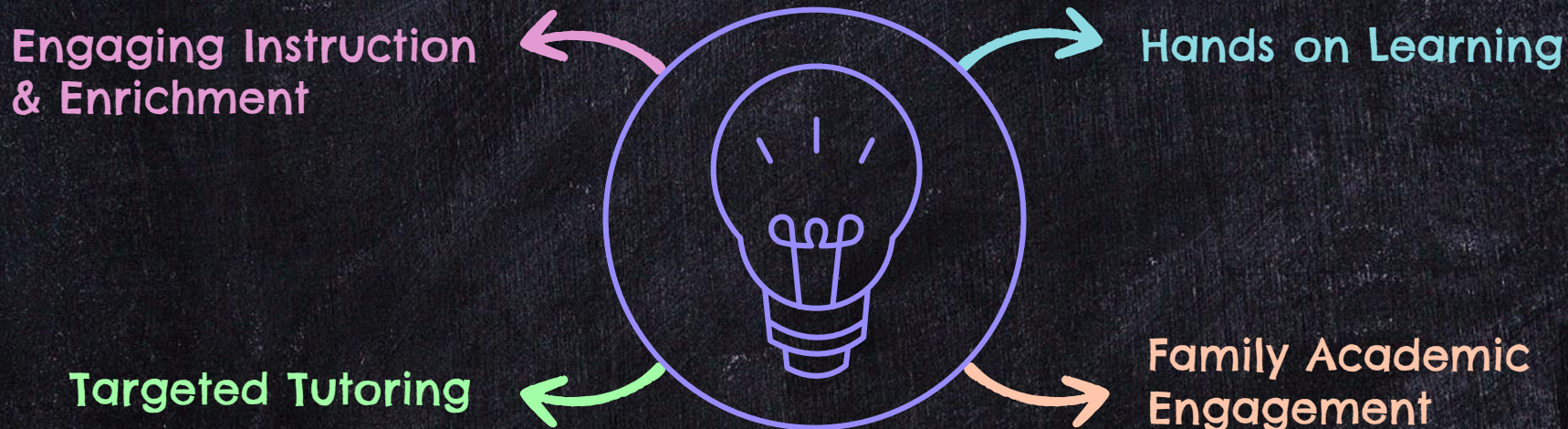
Smoketown

Priority Focus Areas



Targeted Academic Services

Active Instruction



Targeted Academic Services

Engaging Instruction and Enrichment

Examples:

- ★ STEAM Program
- ★ Makerspace
- ★ Critical Thinking Skills
- ★ Focus on Literacy and Math Enrichment



Hands on Learning

Examples:

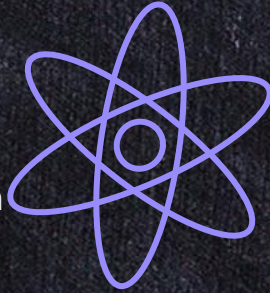
- ★ Opportunities for Student Led Projects
- ★ Experiential Learning
- ★ Small Group Projects
- ★ Coding
- ★ Debates and Academic Competitions

Targeted Academic Services

Targeted Tutoring

Examples:

- ★ Individual or Small Group Intensive Academic Intervention
- ★ Student Progress Plan for Each Student Reviewed Regularly
- ★ Consistent Communication Between Center and School Staff



Family Academic Engagement

Examples:

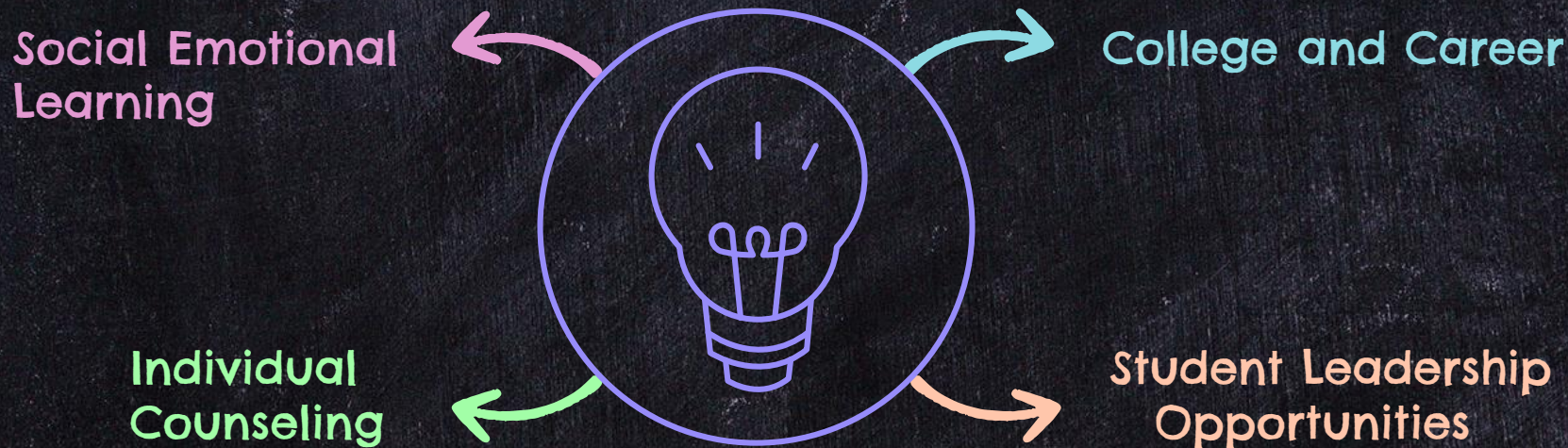
- ★ Family Teacher Home Visits (FTHV) to Focus on Trust, Relationships and Foster Positive Family/Teacher Interactions
- ★ Training for Staff on Family Engagement and FTHV
- ★ Enrichment Services that Reinforce and Complement the Academic Program

Examples of Enrichment Opportunities

- ★ Chess Club
- ★ Urban Gardening
- ★ Cooking Classes
- ★ Music
- ★ Art
- ★ Poetry
- ★ Social Justice
- ★ Sources of Strength
- ★ Technology
- ★ Movement/Dance
- ★ Theater
- ★ Martial Arts



Counseling and Social Emotional



Counseling and Social Emotional

Social Emotional Learning

Examples:

- ★ Social and Emotional Lessons
- ★ Conflict Resolution
- ★ Social Circles



Individual Counseling

Examples:

- ★ Individual Counseling
- ★ Grief and Crisis Counseling
- ★ Family Support with Basic Needs

Counseling and Social Emotional

College and Career

Examples:

- ★ Resume Writing
- ★ Career Exploration
- ★ College Advising/Counseling
- ★ ACT Prep



Student Leadership Opportunities

Examples:

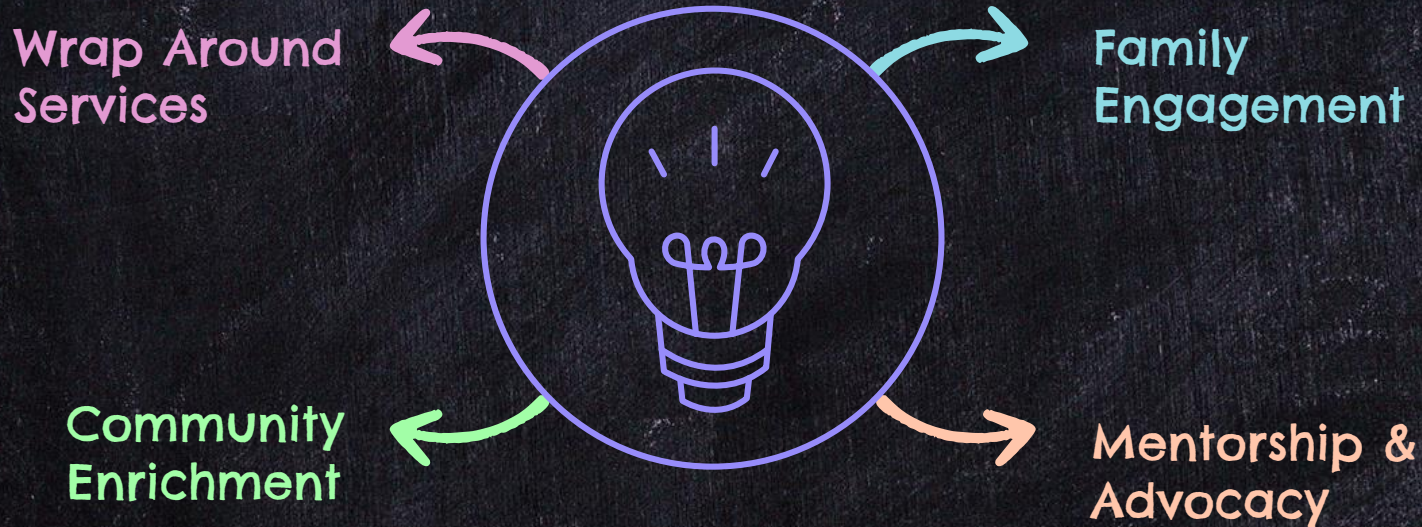
- ★ Leadership Development
- ★ Advocacy and Social Change
- ★ Student Led Conferences
- ★ Volunteer Opportunities

Examples of Student Leadership and Empowerment

- ★ Leadership Development
- ★ Student Advisory Council
- ★ Peer Mentorship Opportunities
- ★ Advocacy Skill Development
- ★ Student Led Community Forums and Informational Fairs
- ★ Instruction on Goal Setting and Planning



Family and Community Partnerships



Family and Community Partnerships

Wrap Around Services

Examples:

- ★ Social Services
- ★ Basic Needs
- ★ Special Family Events
- ★ Medical Screenings



Community Enrichment

Examples:

- ★ Informational Classes and Events
- ★ Panels and Discussions
- ★ Community/Family Advisory Board

Family and Community Partnerships

Family Engagement

Examples:

- ★ Family Teacher Home Visits
- ★ Family/Community Projects
- ★ Family Engagement Events



Mentorship and Advocacy

Examples:

- ★ Community Mentorship Opportunities
- ★ Advocacy Skill Development
- ★ Community Pride Events

Examples of Mentorship and Advocacy

- ★ Reverse Mentoring
- ★ Women of Worth
- ★ Men of Quality
- ★ Social Justice Engagement
- ★ Possible Community
- Mentoring Partnerships
 - Local Universities
 - Businesses
 - Fraternity and Sororities



Elev8 Operational Information and Branding



ELEV8 STUDENT
LEARNING
CENTERS

Standard Operational Hours



Centers will follow the JCPS school calendar

Center Hours: 12:30-8:00 p.m.

Administrative Hours: 12:00-8:00 p.m.

For Middle/High Students: 2:30-7:30 p.m.

For Elementary Students: 4:00-7:30 p.m.

ELEV8

STUDENT
LEARNING
CENTERS

Elev8 Referral and Registration Process: Option 1

Priority registration will focus on students who have significant academic growth areas and/or chronic absenteeism who reside in Elev8 boundaries. District data reporting on attendance and academic performance will identify students that qualify for Elev8 services.

Attendance

Students who have missed 10 or more instructional days.



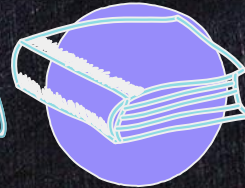
Content Courses

Students that are failing 3 or more core content courses.



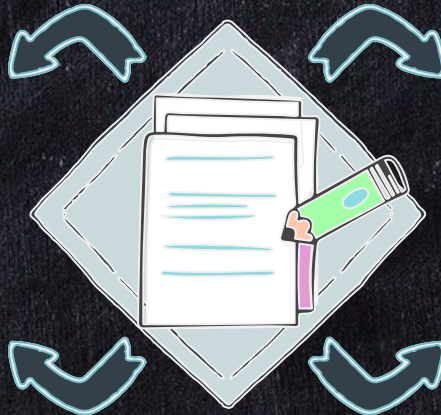
Academic Indicators

Students that are not meeting MAP benchmarks.



Family Outreach

Schools will partner with center staff to connect families with registration information and services that are available through Elev8.



Elev8 Referral and Registration Process: Option 2

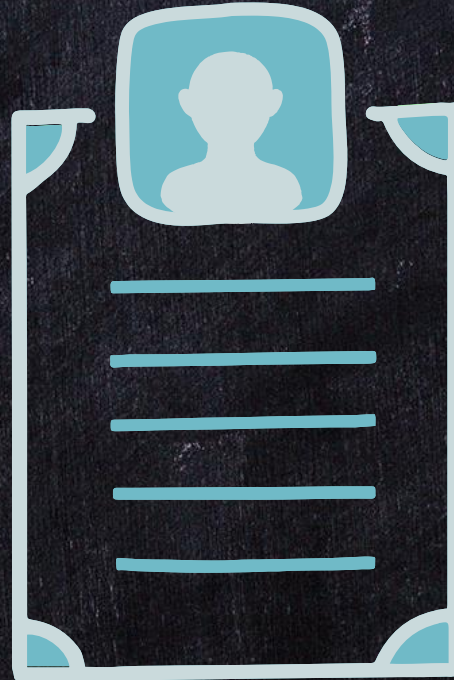
Option 2 will be based on teacher, school, family and community partner referrals for students that need assistance with specific standards if they live in Elev8 boundaries. This option would be beneficial for students that may be on track academically but may need additional support with a specific standard.

Outreach

Teacher or School Staff will share information on Elev8 Tutoring services with students and families.

Registration

Teacher/School will communicate with students and families on tutoring services and registration information.



Targeted Tutoring

Students will be scheduled into targeted tutoring in 1-2 hour blocks.

Interactive Calendar

Families will sign up for tutoring sessions using an interactive calendar that shows availability. This will give our families flexibility with intensive tutoring that accounts for the students individual schedule.

Elev8 Registration Process



Digital Registration

Registration will be offered digitally. School staff will support families with this process.



Elev8 Boundaries

Only students that live in Elev8 boundaries will be able to register for services.



School & Center Outreach

Schools will communicate with families about services and center staff will assist with registration.



Interactive Calendar for Option 2

Families will be able to click on an interactive calendar to schedule content specific tutoring.

Sample Elementary Student Schedule

(M/W/F)

4:00-4:30	Arrival, Snack, Social Circle
4:30-5:00	Makerspace, STEAM Activity
5:00-5:30	Targeted Tutoring/Classroom Extension
5:30-6:00	Get Up, Get Out and Move with Enrichment/Choice Group
6:00-6:30	Targeted Math Tutoring
6:30-7:00	Targeted Literacy Tutoring
7:00-7:30	Light Dinner and Dismissal



(T/TH)

4:00-4:30	Arrival, Snack, Social Circle
4:30-5:00	Social/Emotional Learning
5:00-5:30	Targeted Tutoring/Classroom Extension
5:30-6:00	Get Up, Get Out and Move with Enrichment/Choice Group
6:00-6:30	Targeted Math Tutoring
6:30-7:00	Targeted Literacy Tutoring
7:00-7:30	Light Dinner and Dismissal



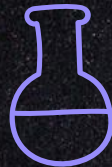
*Each center will offer consistent time for content, however there is flexibility in when the content is delivered.

Sample Middle/High Student Schedule

Monday/Wednesday/Friday

2:45-3:15	Arrival, Snack, Social Circle
3:15-3:55	Makerspace, STEAM Activity
3:55-4:35	Targeted Tutoring/Classroom Extension
4:35-5:15	Enrichment/Choice group
5:15-5:55	Targeted Literacy Tutoring
5:55-6:25	Get Up, Get Out and Move
6:25-7:05	Targeted Math Tutoring
7:05-7:30	Light Dinner and Dismissal

*Each center will offer consistent time for content, however there is flexibility in when the content is delivered.



Sample Middle/High Student Schedule

Tuesday/Thursday

2:45-3:15	Arrival, Snack, Social Circle
3:15-3:55	College/Career Exploration and Counseling
3:55-4:35	Targeted Tutoring/Classroom Extension
4:35-5:15	Enrichment/Choice group
5:15-5:55	Targeted Literacy Tutoring
5:55-6:25	Leadership and Social Emotional Learning
6:25-7:05	Targeted Math Tutoring
7:05-7:30	Light Dinner and Dismissal

*Each center will offer consistent time for content, however there is flexibility in when the content is delivered.



Elev8 Staffing Proposal

- ★ Director*
- ★ Principal* (*Lead Principal*)
- ★ Associate Principal (*Deputy Principal*)
- ★ Elementary School Counselor
- ★ Secondary School Counselor
- ★ Mental Health Practitioner
- ★ Family Outreach Coordinator
- ★ Nurse
- ★ Partnership Coordinator*
- ★ Secretary
- ★ Clerk

- ★ Regular Education Teachers
- ★ ECE Teachers
- ★ ESL Teachers
- ★ Instructional Assistants
- ★ Bilingual Associate Instructors
- ★ Technology Resource Teacher*
- ★ Academic Instructional Coach*
- ★ Custodial Staff
- ★ Assistant Nutrition Services
- ★ Security Monitor In School

* = 1 position serves all 3 Centers

Examples of Proposed Operational Resources

- ★ Buildings
- ★ Security Features (ID scanners, Surveillance Cameras, PA and Phone System, etc.)
- ★ Transportation & Activity Bus
- ★ Meals: Snack and Dinner
- ★ Infrastructural Needs
- ★ Classroom and Office Furniture
- ★ Computer Center
- ★ Classroom Technology for Students and Staff
- ★ Interactive Display Panels
- ★ Office and Classroom Supplies
- ★ Cleaning Supplies
- ★ PPE
- ★ SEL Curriculum
- ★ Diverse Mini-Libraries
- ★ ACT Test Prep Materials
- ★ STEAM Lab
- ★ Art Supplies
- ★ Refrigerator
- ★ Washer/Dryer
- ★ Microwave
- ★ Water Bottle Fill Stations

Ongoing Work

- ★ Identify and Secure Buildings
- ★ Approval of Staffing
- ★ Approval of Operational Expenses
- ★ Hire Student Learning Center Staff
- ★ Finalize Virtual Registration
- ★ Build Digital Infrastructure
- ★ Secure Furniture and Identified Resources
- ★ Training and Professional Development for Center Staff
- ★ Communication Blitz on Center Services and Registration Process
- ★ Continued Collaboration with Internal District Departments
- ★ Continued Collaboration with Community Partners
- ★ Information Sessions with School Staff
- ★ Incentive for Student Participation
- ★ Develop Community Enrichment Opportunities



Elev8 Your Mind,
Possibilities and
Potential

ELEV8

STUDENT
LEARNING
CENTERS