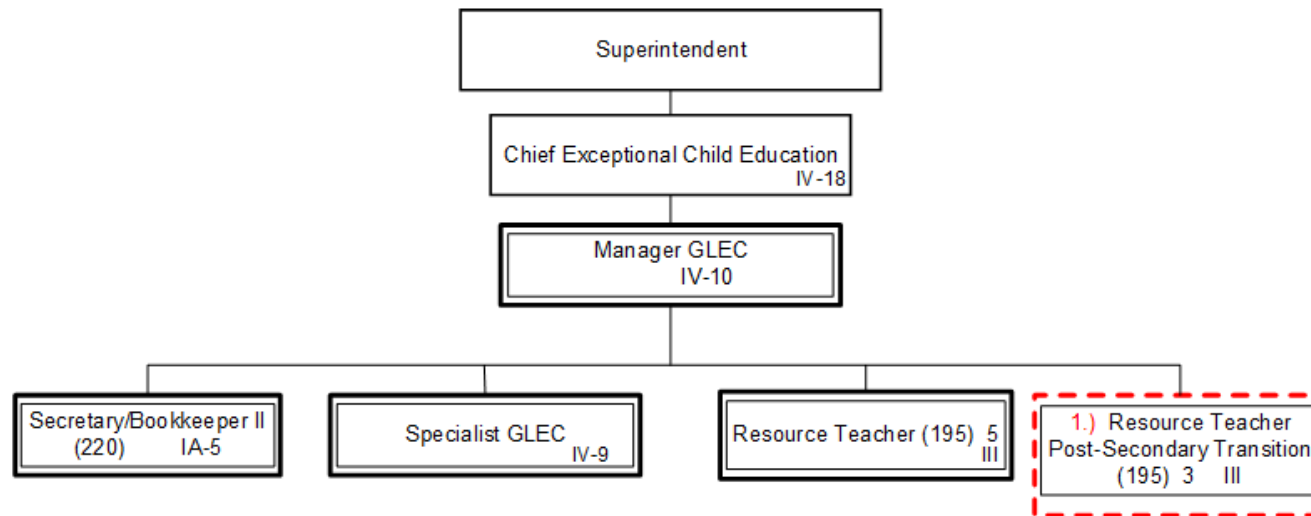


Munis Unit No. GL1
 Greater Louisville Educational Cooperative
 2021-2022



1.) Change funding source

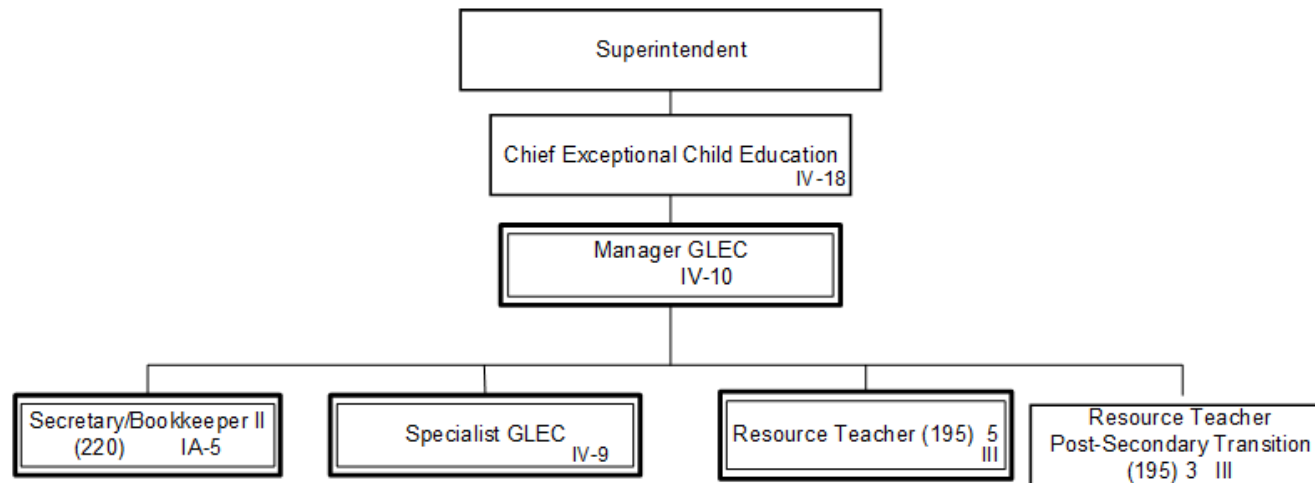
Summary:

General Fund Positions: ~~0~~ 3
 Categorical Fund Positions: ~~44~~ 8

M-2

Submitted ~~4/24/2020~~ 8/17/2021
 Effective ~~7/1/2020~~ 8/18/2021

Munis Unit No. GL1
Greater Louisville Educational Cooperative
2021-2022



Summary:

General Fund Positions: 3
Categorical Fund Positions: 8

M-2

Submitted 8/17/2021
Effective 8/18/2021