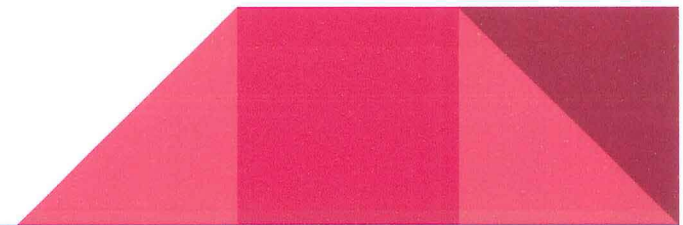


Progress with Full Day Kindergarten

Courtney Pitts, Academic Program Consultant

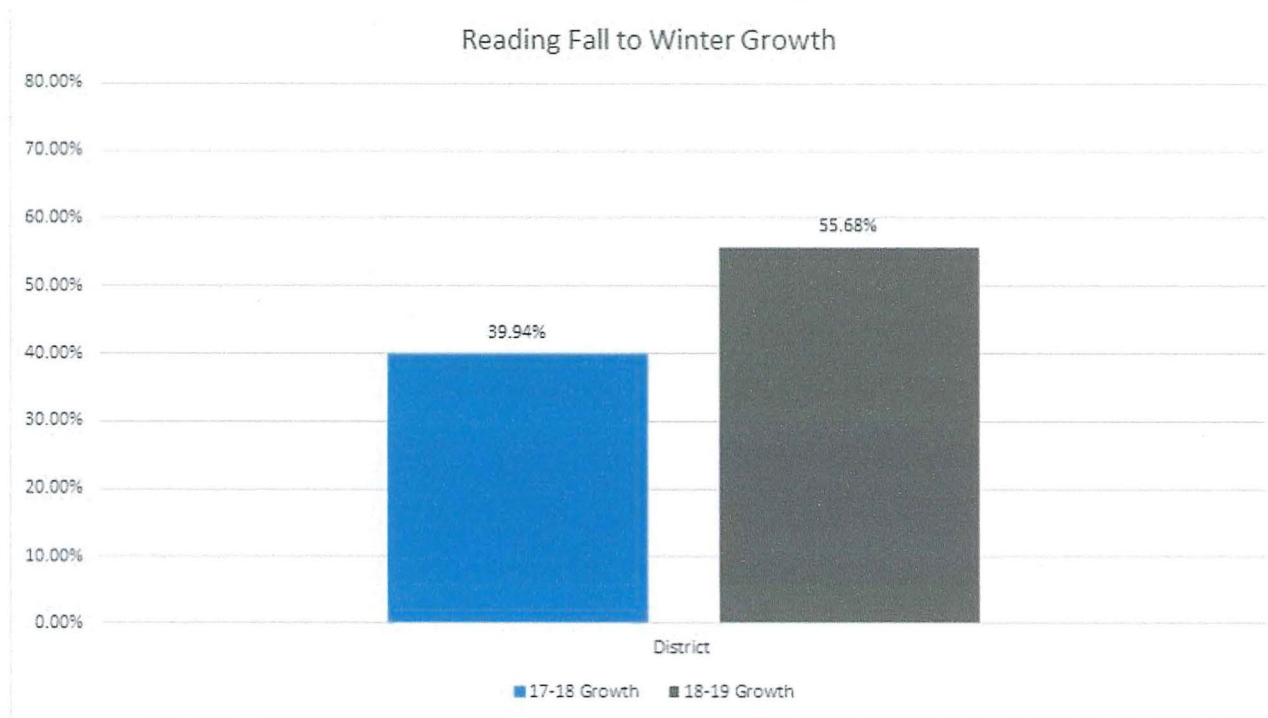
Melody Childers, Kindergarten teacher, Piner Elementary



Full Day Kindergarten

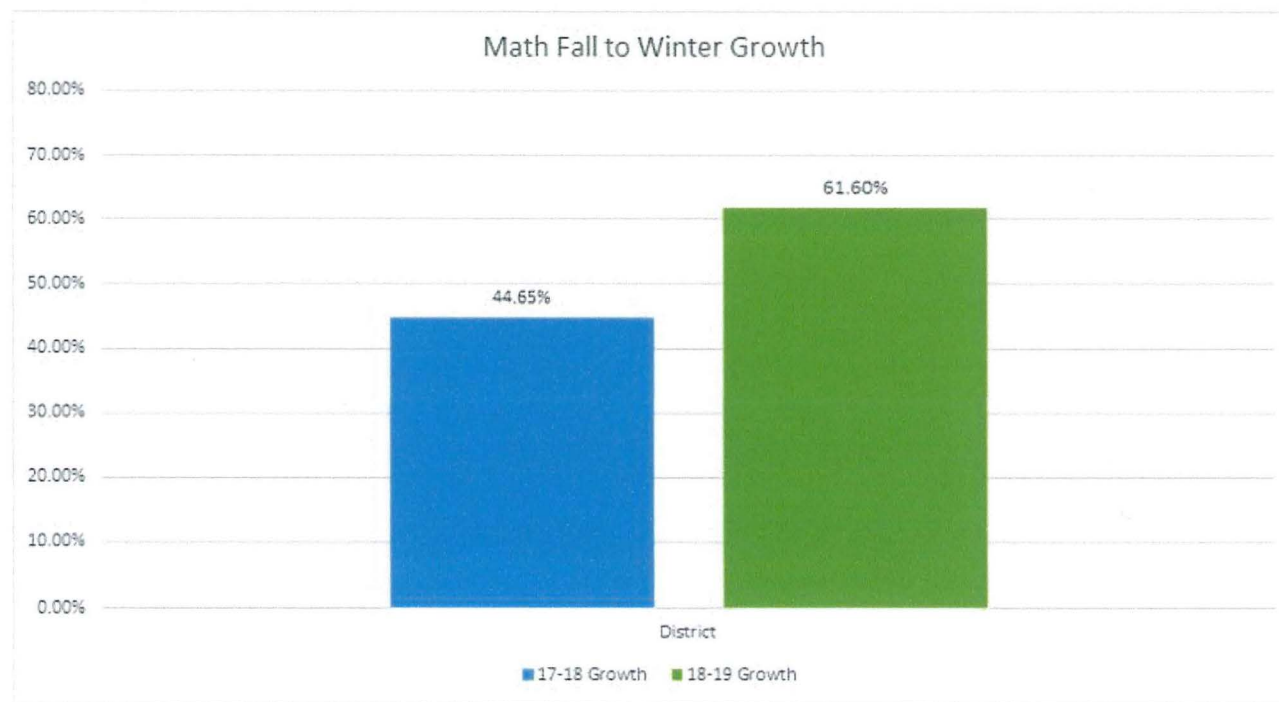
- Summer Planning Professional Development with 24 teachers in attendance
 - Critical Skills list for exiting Kindergarten
 - Sample Schedules
 - Literacy and Math Models aligned to KCSD Quality Instruction Cycle
 - Revised ELA curriculum guide and timeline to reflect full day with a focus on reading foundational skills
 - Discussion of new report card
- Kindergarten Committee
 - Finalized Critical Skills list for exiting Kindergarten for reading & math based on standards
 - Drafted new report card
- Kindergarten Quality Instruction Walks
 - All 48 classrooms visited at least twice by consultants with feedback provided (September-November)
 - Visits will resume February

Percentage of Kindergarten Students Making Growth on MAP from Fall to Winter 2017-18 and 2018-19 Comparisons



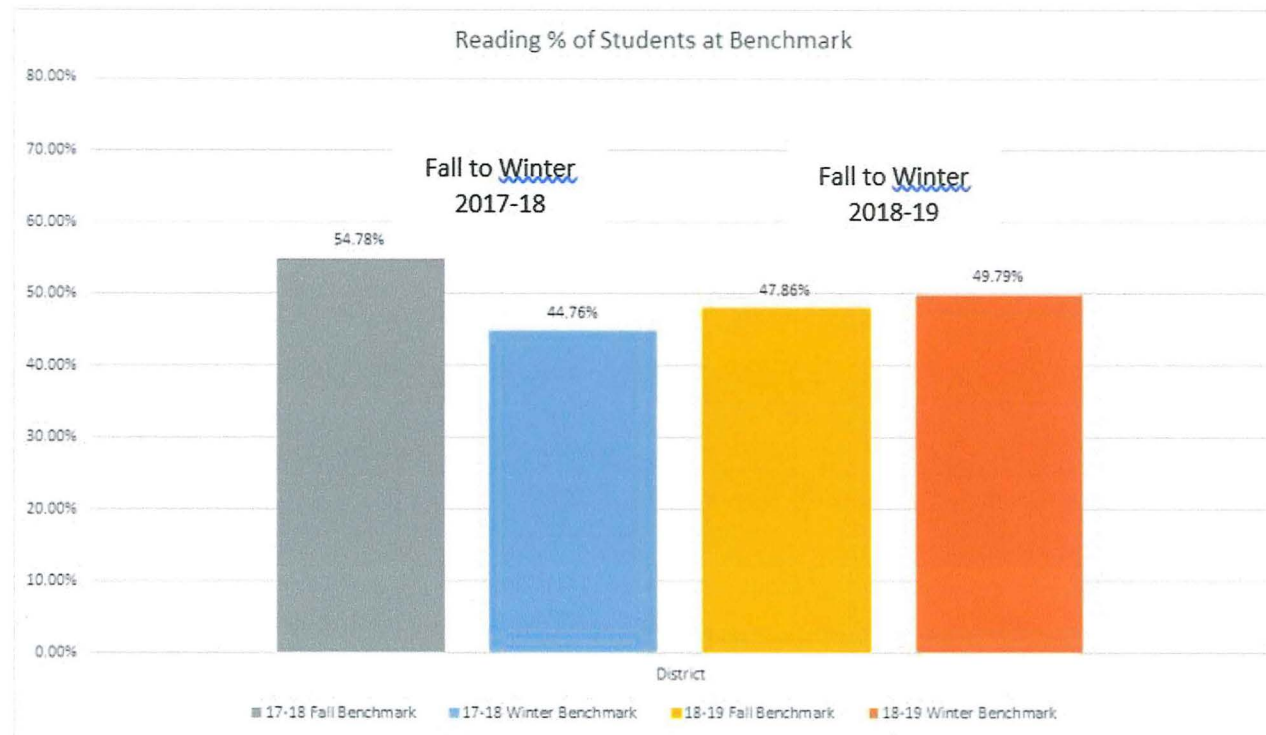
- From 17-18 to 18-19 there was a 15.74% increase of students showing MAP growth from fall to winter.
- 8/10 schools saw an increase of 10% or higher
- 6/10 schools saw an increase of 20% or higher

Percentage of Kindergarten Students Making Growth on MAP from Fall to Winter 2017-18 and 2018-19 Comparisons



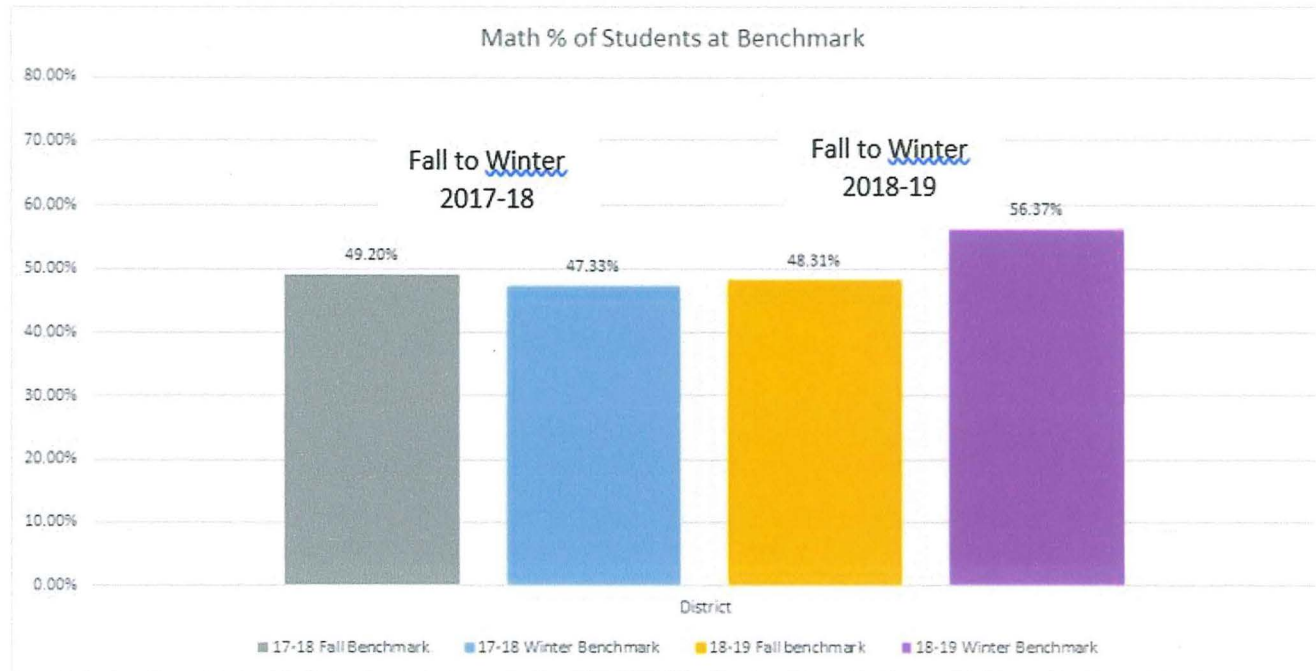
- From 17-18 to 18-19 there was a 17% increase of students showing MAP growth from fall to winter.
- 6/10 schools saw an increase of 10% or higher
- 4 schools saw an increase of nearly 30% or higher

Percentage of Kindergarten Students at Benchmark From Fall to Winter 2017-18 and 2018-19 Comparisons



- From Fall to Winter in 17-18 the number of students at benchmark decreased by 10%
- From Fall to Winter in 18-19 the number of students at benchmark increased by 2%

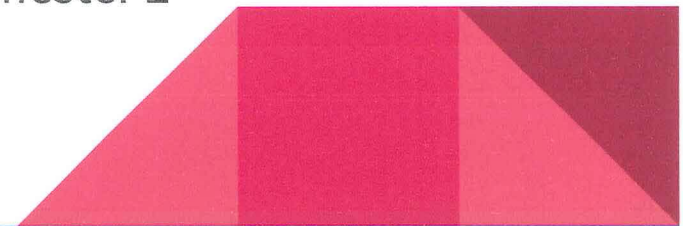
Percentage of Kindergarten Students at Benchmark From Fall to Winter 2017-18 and 2018-19 Comparisons



- From Fall to Winter in 17-18 the number of students at benchmark decreased by 2%
- From Fall to Winter in 18-19 the number of students at benchmark increased by 8%

New Report Card

- K teachers requested a new report card to match new expectations
- Current grade reporting system was evaluated by consultants & directors who determined there was a need for a new report card
- New Report card was drafted with Kindergarten committee and shared with principals
- New Report Card is standards based, includes an assessment with specific scores for Critical Skills and will show progression throughout the year (# of sight words, letter sounds identified, oral rote counting, number writing, etc.)
- 8 schools adopted the new report card (approved in SBDM) for use in fall 2018 for Trimester 1, all schools will use new report card for Trimester 2



Classroom Impact - Melody Childers

- Improved Relationships
- Preparation for 1st grade
- Increased academic success in both math & reading
- New Report card- feedback from parent surveys

“

Mrs Childers,

I absolutely LOVE your new report card format! It is very organized, easy to read, and very explanatory friendly. I also LOVE the two categories of ON/BEYOND GRADE LEVEL. That allows me to know if _____ is where she needs to be. This report card format should definitely be used in the future. I hope everyone else liked it as much as I do because it is fantastic. It relieves so many questions already answered because it is very clearly laid out.

You did a great job!

Thanks.

