

# Kentucky's Secondary Career & Technical Education (CTE) System

*David Horseman*  
*Associate Commissioner*

*Leslie Slaughter*  
*Executive Advisor*

*Kentucky Department of Education*  
*Office of Career & Technical Education*

# The Old “Vocational” Education...



*Only for Certain  
Student Populations*

*Limited Program Offerings*

*High School Focused*

*Students Trained with  
Specific Occupational  
Skill Set*



# Today's Career & Technical Education...



*For ALL Students*

*16 National Career Clusters  
and almost 150 Kentucky  
Career Pathways*

*Integrated with Core  
Academics through Rigorous &  
Relevant Curriculum*

*High School, Postsecondary &  
Employer Partnerships*

*Emphasis on Foundational  
Academic, Employability, AND  
Occupational Skills*



## 12 Elements of a High-Quality CTE Program of Study



Standards-aligned and  
Integrated Curriculum



Sequencing and Articulation



Student Assessment



Prepared and Effective  
Program Staff



Engaging Instruction



Access and Equity



Facilities, Equipment,  
Technology and Materials



Business and Community  
Partnerships



Student Career  
Development



Career and Technical  
Student Organizations

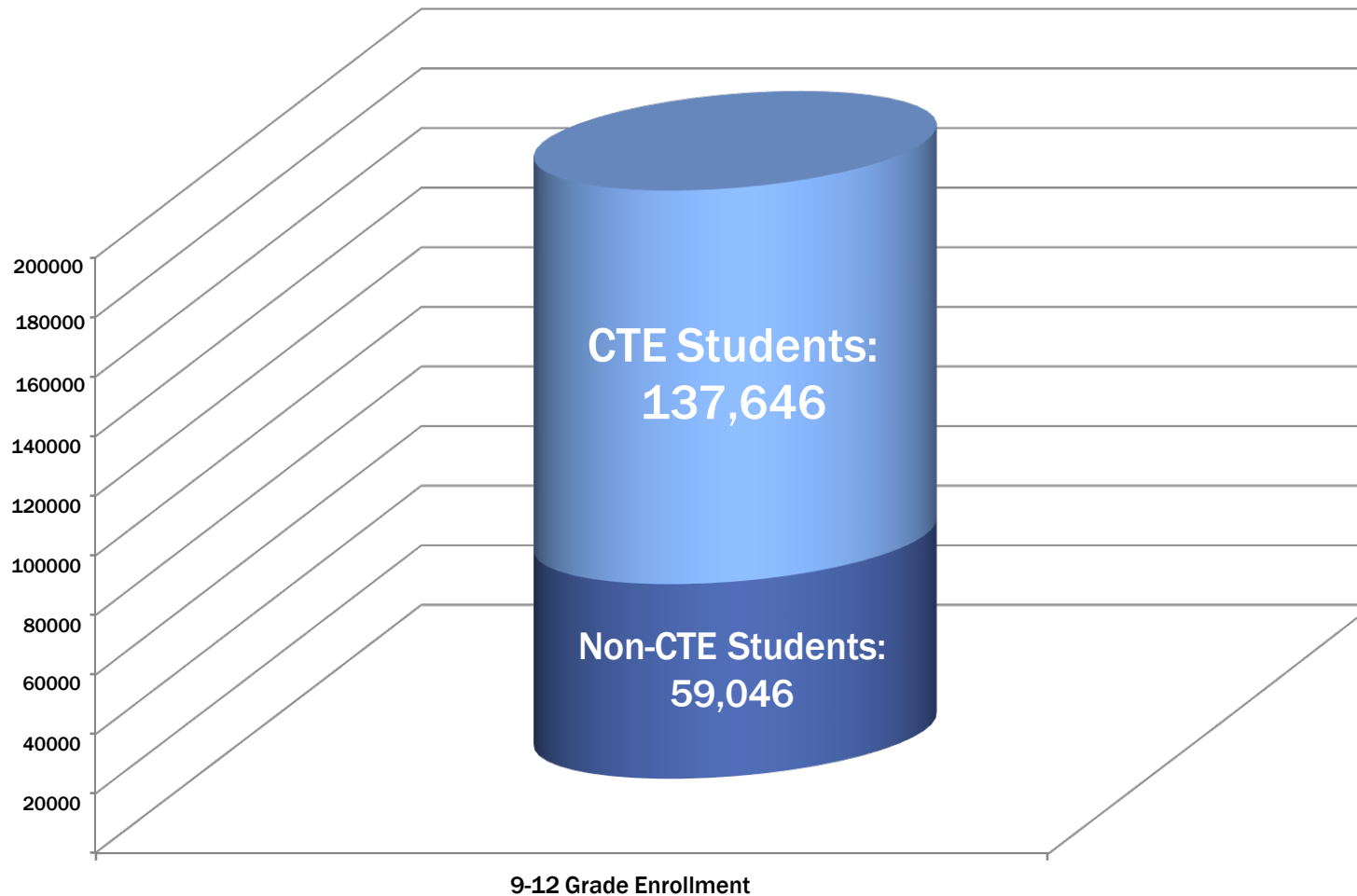


Work-based Learning



Data and Program Improvement

70% of Kentucky's high school students in 2019-2020 were enrolled in CTE career pathways.





CTE Program Area	2019-2020 Enrollments
Agriculture and Natural Resources	30,693
Architecture and Construction	8,262
Arts, A/V Technology and Communications	8,350
Business and Administration	35,643
Education and Training	1,441
Health Science	26,210
Hospitality and Tourism	3,264
Human Services	40,672
Information Technology	17,022
Law and Public Safety	10,384
Manufacturing	10,159
Retail/Wholesale Sales and Service	22,848
Science Technology Engineering and Mathematics (STEM)	21,306
Transportation, Distribution and Logistics	5,285
<u>Secondary Career Pathways</u> <ul style="list-style-type: none"> <li>✓ 85% Connected to the Top Occupations within the State's Top 5 Industry Sectors</li> <li>✓ 15% Connected to the Top Support Occupations</li> </ul>	

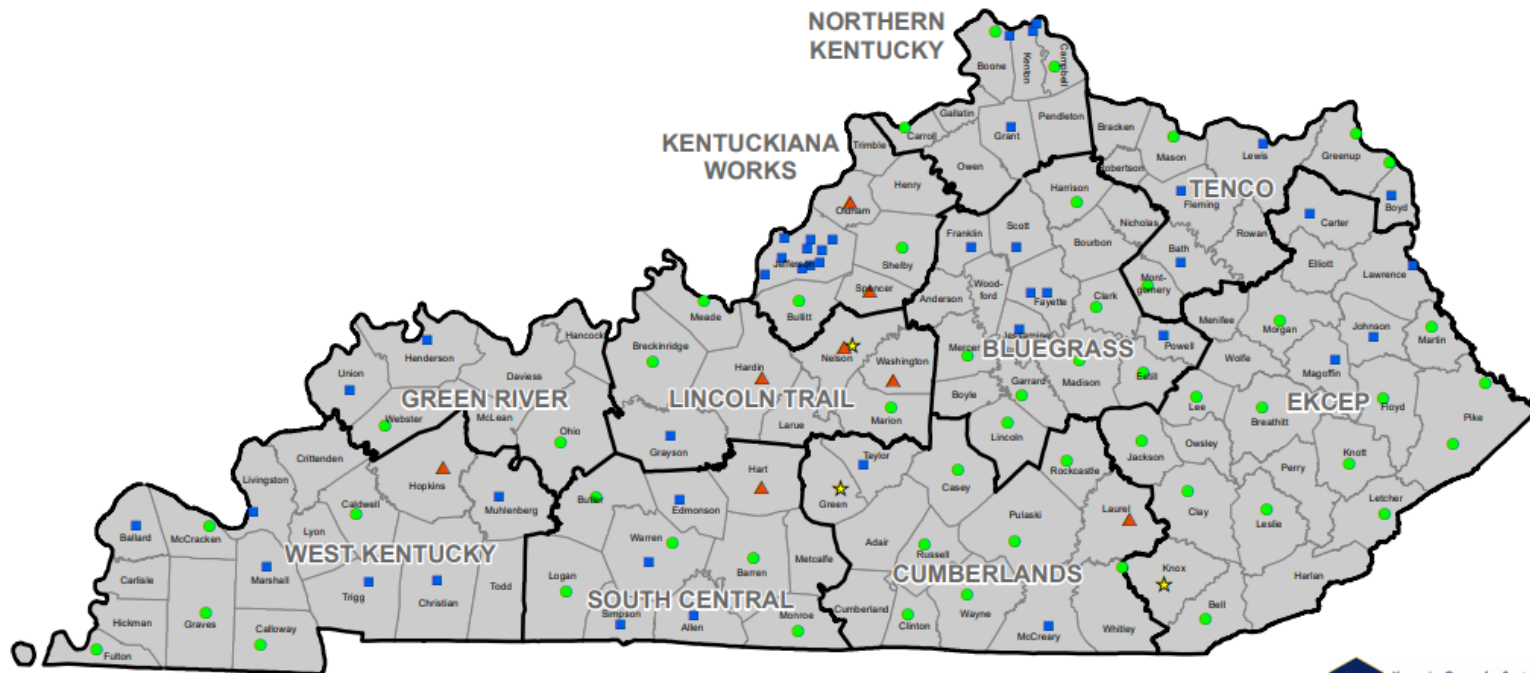
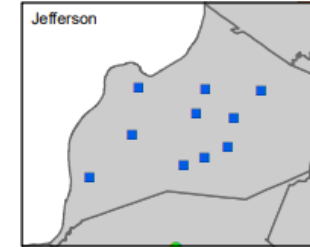
# Kentucky's Secondary CTE Delivery System

State-Operated Area Technology Centers	Locally-Operated LAVEC Schools	All Other CTE Program Locations
53	42 Funded	204
Unique 9 <sup>th</sup> -12 <sup>th</sup> Grade Students (2019-2020)		
22,111	33,410	95,029

# ATC and CTC Locations

## Funding Classification

- Area Technology Center (ATC)
- ★ Local Area Technology Center (ATC)\*
- Local Area Vocational Education Center (LAVEC)
- ▲ Local Area Vocational Education Center (LAVEC) Wait List



\*Pursuant to KRS.157.069

July 8, 2021



# Kentucky's New Skills for Youth (NSFY) Grant

A regionalized governance and delivery of CTE through accelerated career academies that:

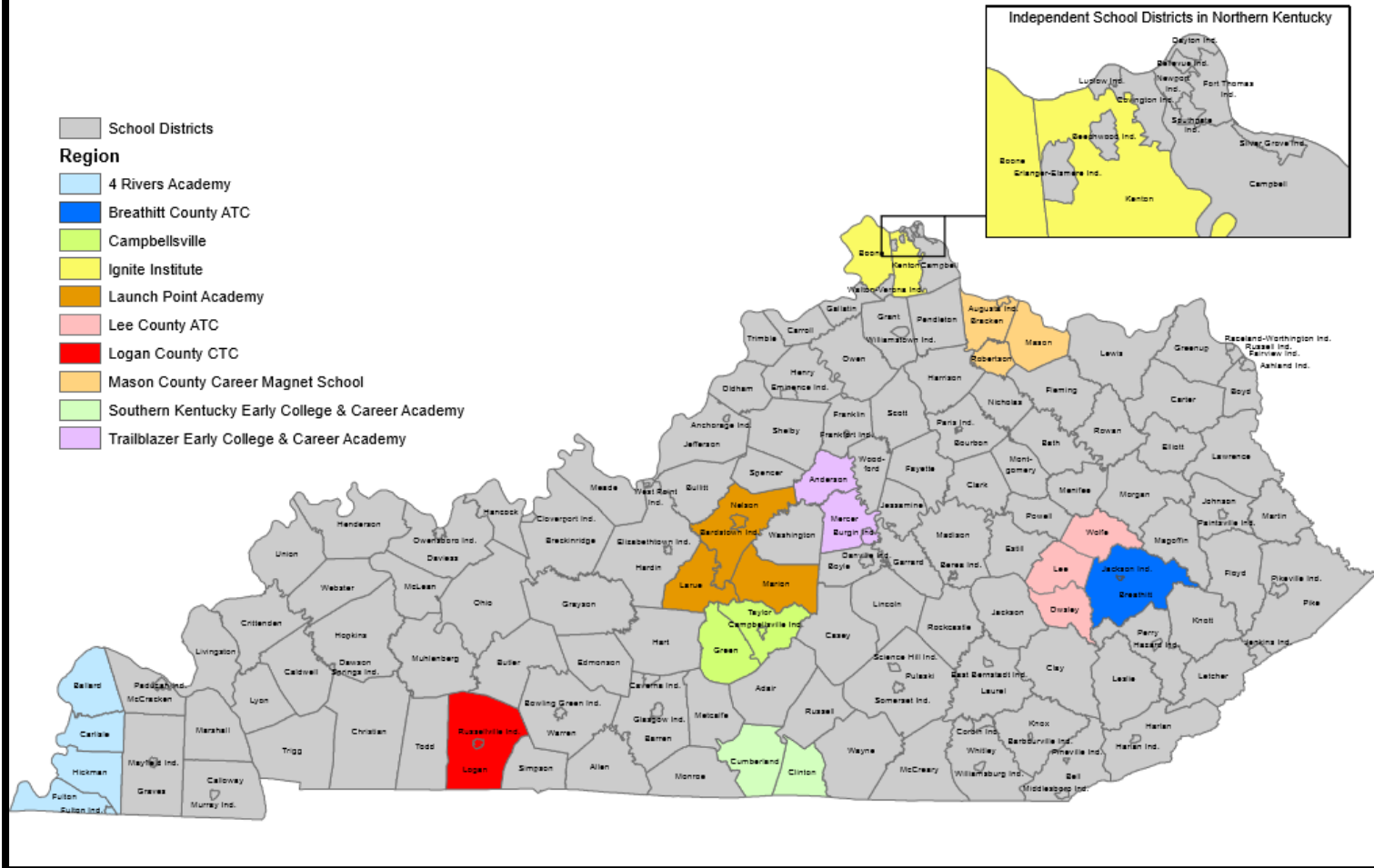
- ☐ *are employer-led through regional workforce areas and ensures cross-institutional involvement;*
- ☐ *encompass career pathways that have seamless transitions from secondary to postsecondary education and are aligned to the state and region's most in-demand careers;*
- ☐ *involve shared resources and funding among all partners; and*
- ☐ *provide valuable industry certifications and credentials that are recognized by business and industry.*

# Kentucky's Premise for NSFY...



# NEW SKILLS FOR YOUTH

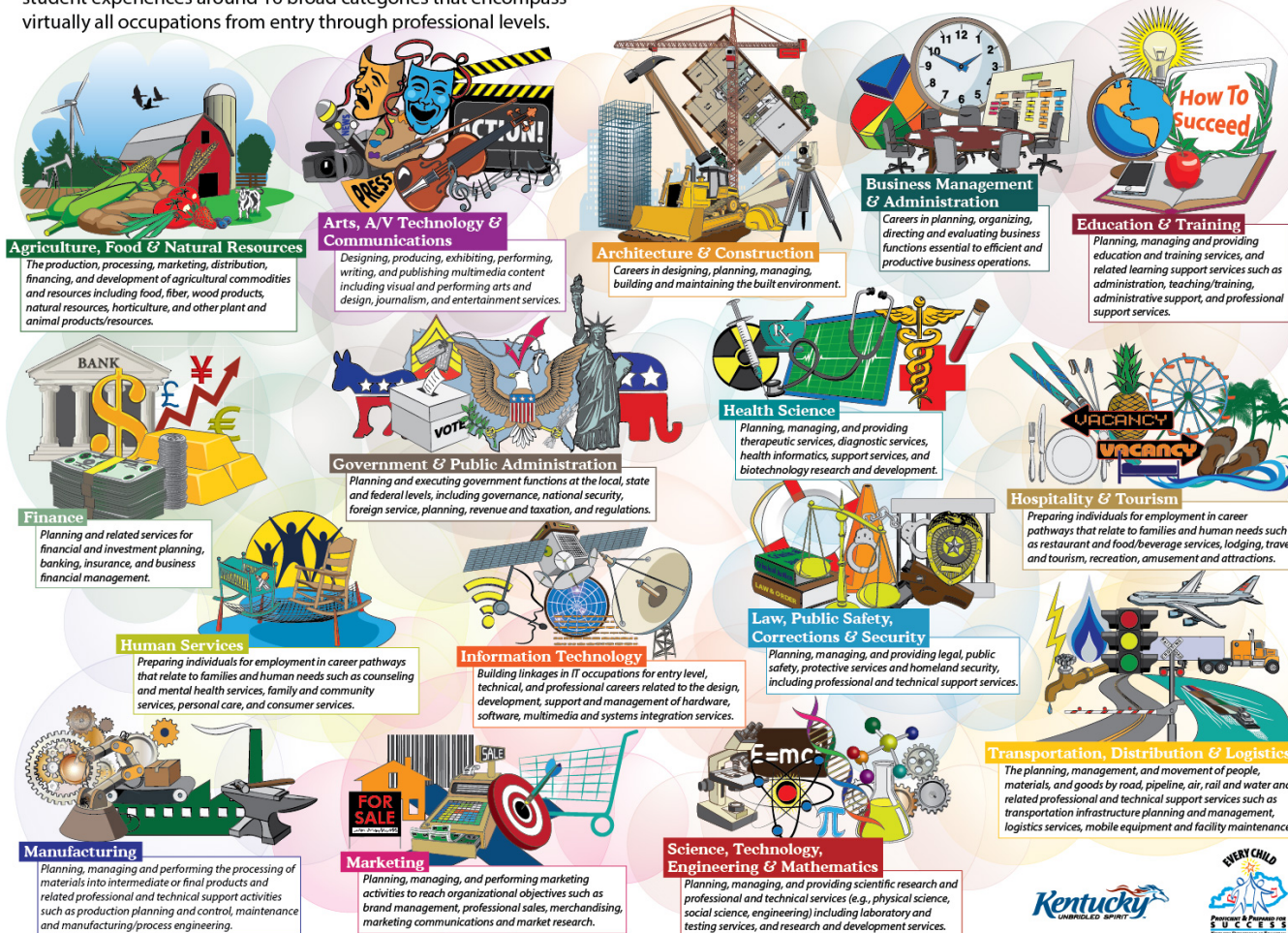
## Kentucky NSFY Regional Career Academies





# Kentucky Career Clusters

Career Clusters provide a way for schools to organize instruction and student experiences around 16 broad categories that encompass virtually all occupations from entry through professional levels.

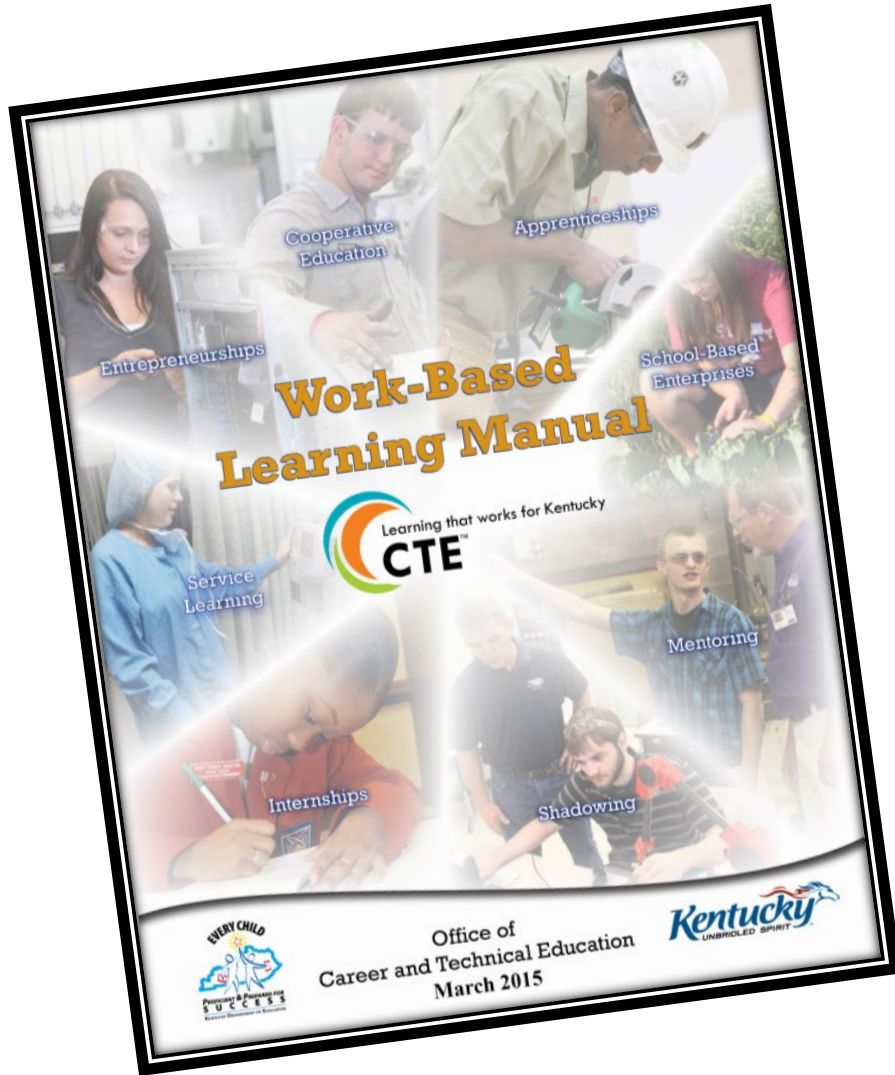


Kentucky's secondary CTE Program of Study offers approximately 150 career pathway options.



# Seamless Pathways: Grades 9-16

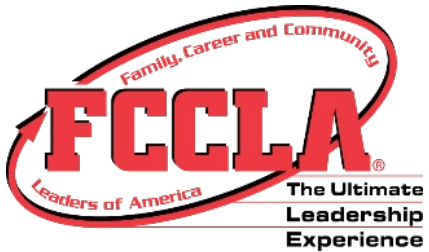
- Technical Core Classes
- Aligned General Ed Classes
- Embedded Acceleration Opportunities / Early Postsecondary Opportunities
  - Work-Based Learning
  - Industry Certification
  - End-of-Program (EOP) Assessments
  - Dual Credit



## Work-Based Learning Experiences

- ✓ *Service Learning*
- ✓ *Mentoring*
- ✓ *Job Shadowing*
- ✓ *School-Based Enterprises*
- ✓ *Internships*
- ✓ *Entrepreneurship*
- ✓ *Cooperative Learning*
- ✓ *Youth/Pre-Apprenticeship*

# Kentucky's Eight (8) Career and Technical Student Organizations (CTSOs)



42,338  
Student Members  
(2019-20)



# CTE Data: What are the stories?



Did you know that  
approximately  
**98%**  
of Kentucky's concentrating  
CTE seniors  
graduate from high school  
each year?



Source: Carl D. Perkins Federal Accountability Data

# College-Going Rate CTE Completer (Kentucky)

## Postsecondary Outcomes

\*\*The absence of data indicates that data are unavailable or redacted.

Academic Years

CTE Status

College Going Metric

2013-2014

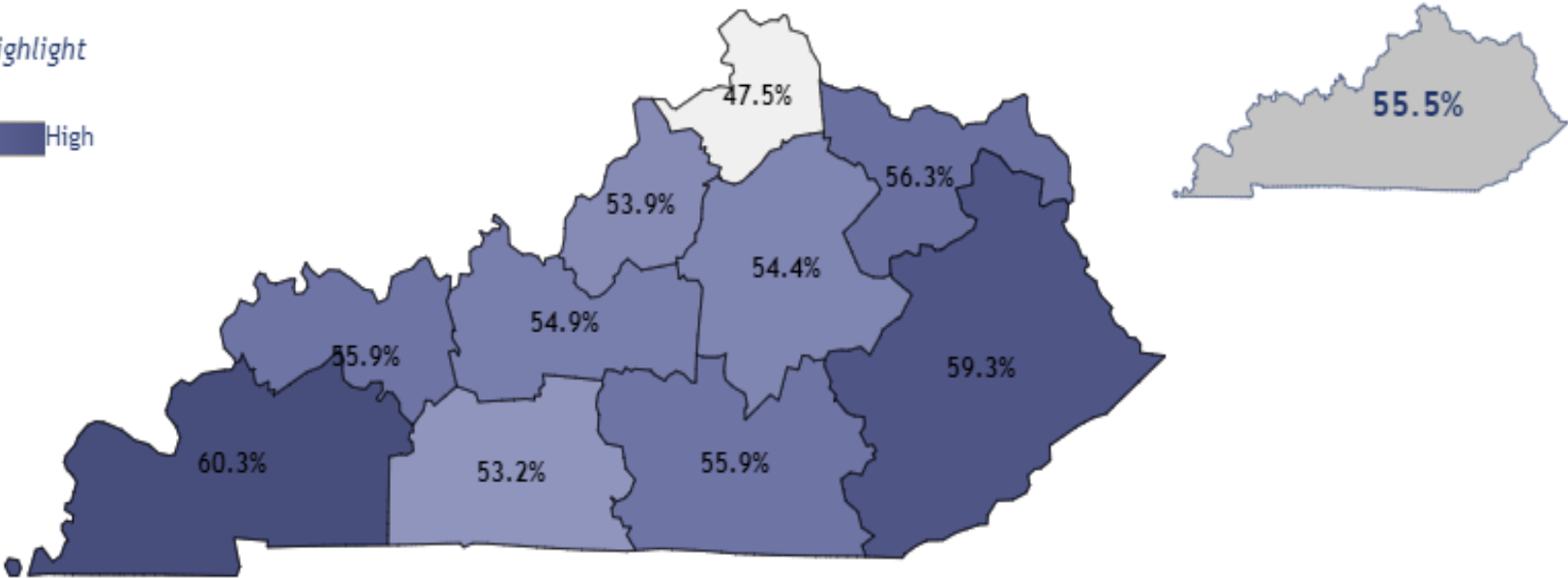
Completer, All

College Going Rate

### Local Workforce Area (LWA) Map for Program Completers

Click an area on the map to highlight all measures for that LWA.

Low High



# College-Going Rate Non-Preparatory (Kentucky)

## Postsecondary Outcomes

\*\*The absence of data indicates that data are unavailable or redacted.

Academic Years  
2013-2014

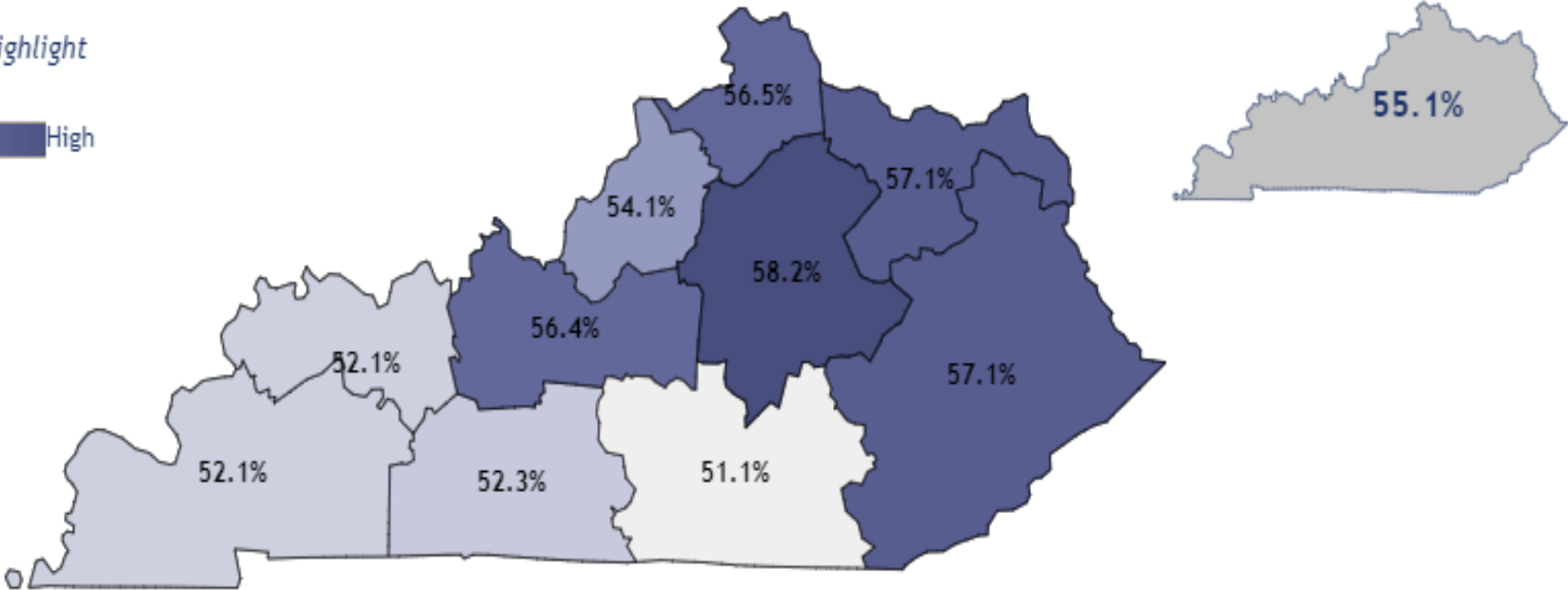
CTE Status  
Non-Preparatory, All

College Going Metric  
College Going Rate

### Local Workforce Area (LWA) Map for Program Completers

Click an area on the map to highlight all measures for that LWA.

Low High



# Workforce Outcomes (Lincoln Trail)

## Workforce Outcomes

Select a View

Employment Rates

Employment Years Out

Five Years Out

*Employment Rates for Completer, All*



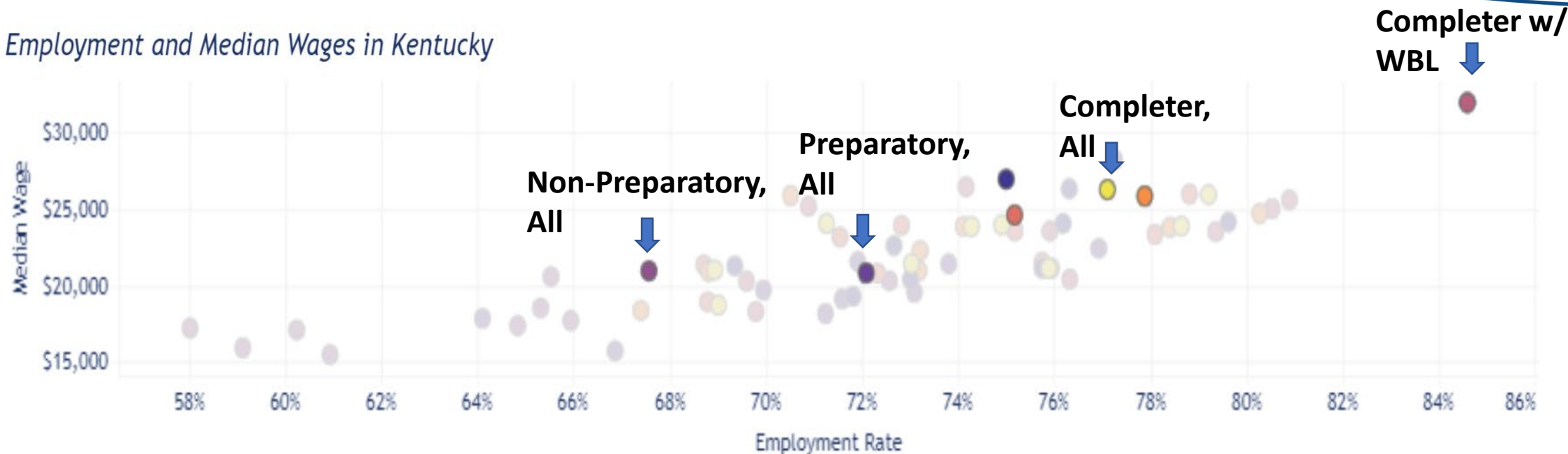
*Employment Rates for 2013-2014 Completer, All*

	One Year Out	Three Years Out	Five Years Out
Bluegrass	76.0%	79.9%	78.6%
Cumberlands	73.7%	77.0%	75.9%
EKCEP	59.5%	66.7%	69.0%
Green River	72.1%	72.5%	71.3%
Kentuckiana Works	80.5%	80.1%	79.2%
Lincoln Trail	76.7%	77.1%	77.1%
Northern Kentucky	78.9%	76.8%	74.3%
South Central	77.1%	78.0%	74.9%
TENCO	68.3%	70.5%	68.9%
West Kentucky	73.2%	72.6%	73.0%



# Workforce Outcomes (Lincoln Trail)

Employment and Median Wages in Kentucky



## CTE Status

Completer, All

Completer, with industry certificate

Completer, with no industry certificate

Completer, with no Work Based Learning

Completer, with Work Based Learning

Non-Preparatory, All

Preparatory, All

# Continued Priorities & Next Steps

# Continued Legislative Priorities

## Funding for Secondary CTE

- Increase Adequacy of Funding
  - Inequities between state and local CTE centers
  - Currently no state funding allocated for comprehensive high school and middle school CTE programs
- Reform for Funding Distribution
  - Unified formula that funds ALL programs equitably
  - Incentives and recognizes implementation of [high-quality CTE programs of study](#)

# NEW Kentucky CTE Branding Initiative:

The KDE has contracted with a marketing firm to complete two (2) phases of work:

1. Logo and Tagline Development
2. Brand Messaging
  - Radio and Television Ads
  - Print Materials

KDE communications team will assist with:

1. Social Media Campaign
2. Webpage Redesign
3. Success Stories and Videos



# NEW National CTE Vision

Our vision:

**CTE**  
without  
limits

**ADVANCE** > CTE  
*State Leaders Connecting Learning to Work*



**Principle 1:** Each learner engages in a cohesive, flexible and responsive career preparation ecosystem



**Principle 2:** Each learner feels welcome in, is supported by and has the means to succeed in the career preparation ecosystem



**Principle 3:** Each learner skillfully navigates their own career journey



**Principle 4:** Each learner's skills are counted, valued and portable



**Principle 5:** Each learner can access CTE without borders

